



Imarda NZ Ltd
Level 2, 135 Broadway,
Newmarket, Auckland 1023
New Zealand

Phone +64 9 373 7250
Fax +64 9 522 2157
www.imarda.com

16th July, 2015

To whom it may concern,

I am confirming the physical and electrical variances between the V301-336-IW-030 and V301-336-XWP-030 Telematics devices are as follows:

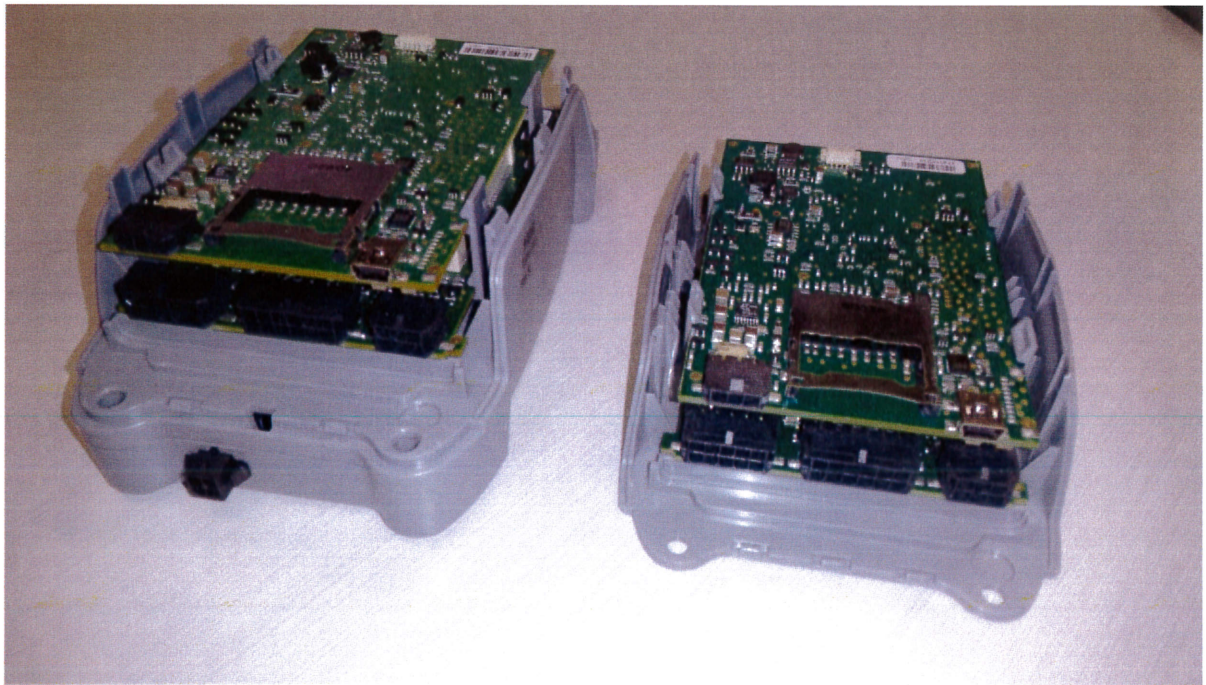
Internally, the 2 models contain identical CPU and FMX PCB assemblies, within the IW variant the cellular modem is clipped onto the FMX board via a connector and retained with screws, the XWP variant has the cellular modem module removed and features an additional PCB assembly which contains additional circuitry for PLC (no Radios on the PLC board). Side by side photos of the internals of both products are shown below (XWP on left):



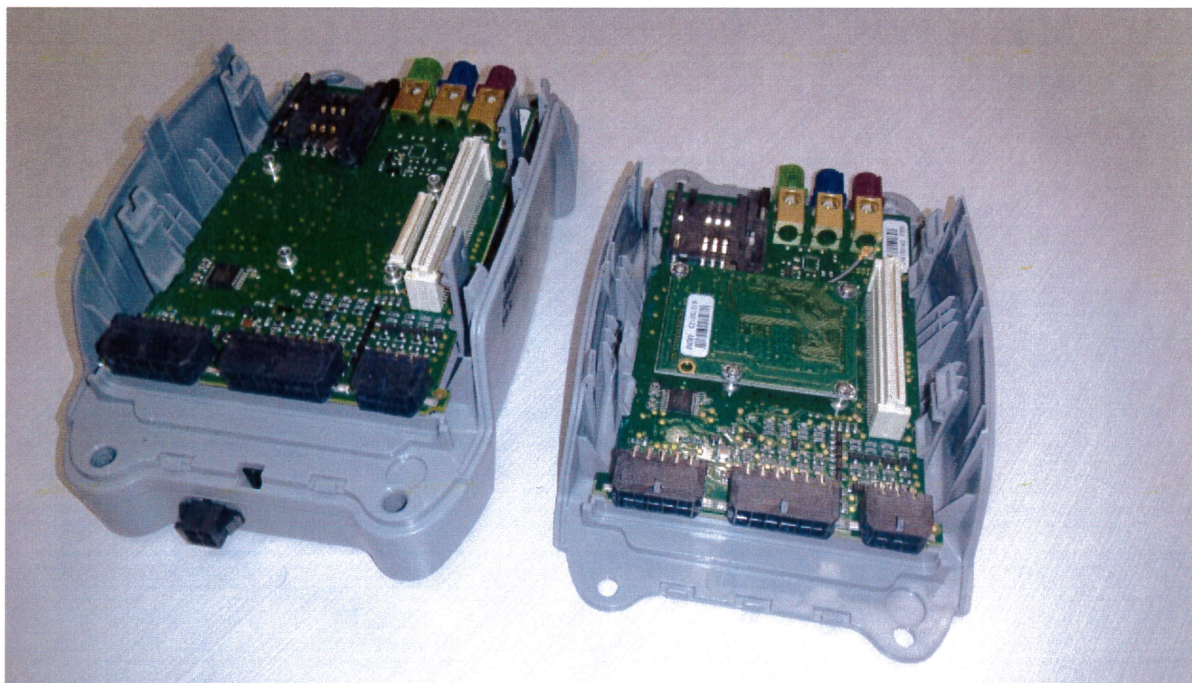
Connector End



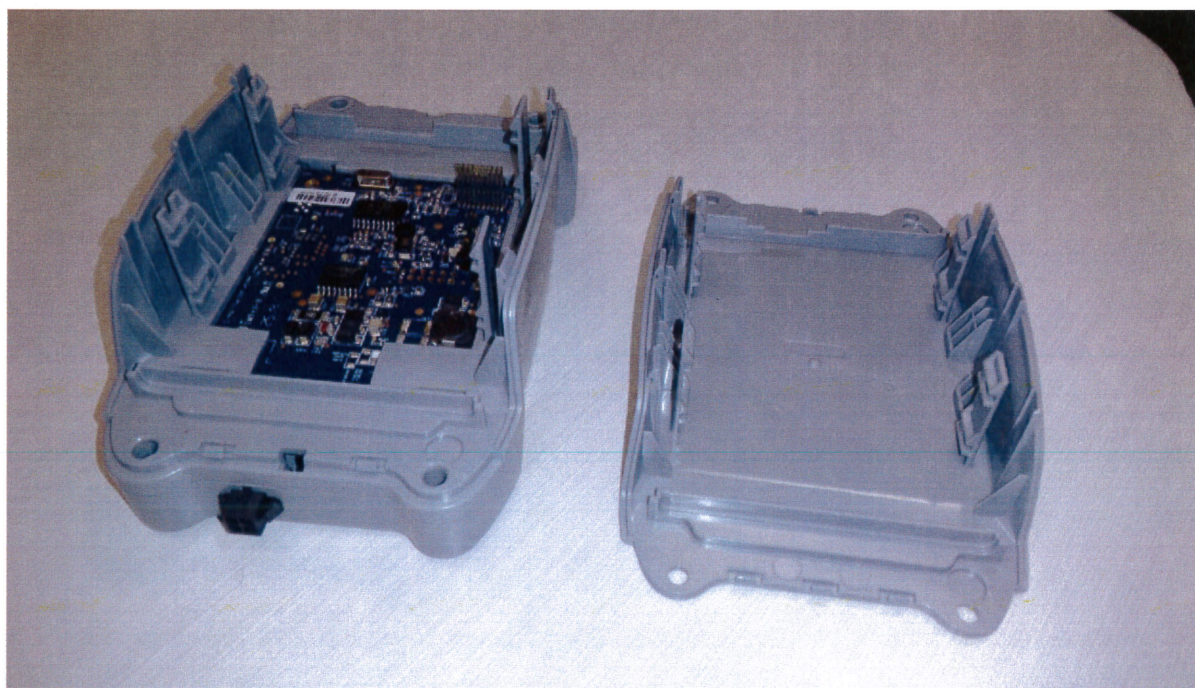
RF End



CPU

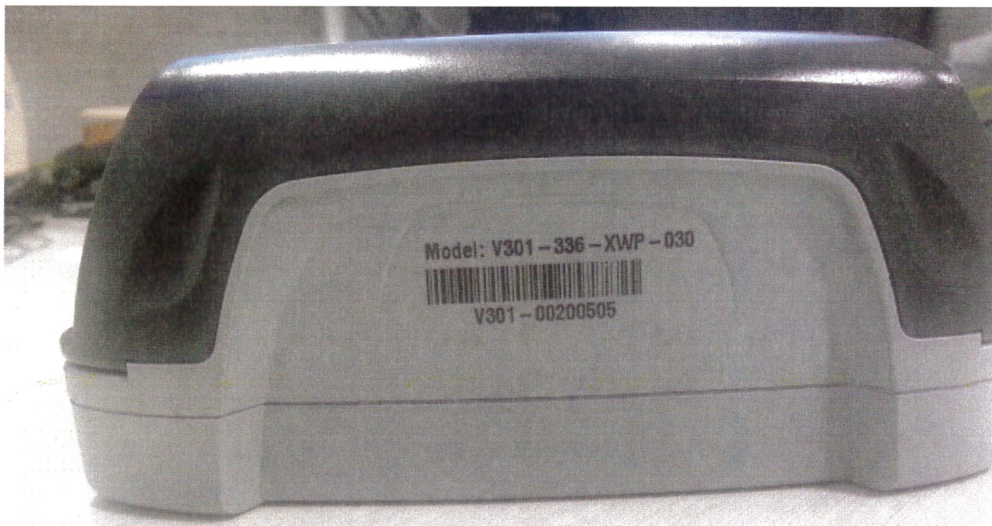


FMX – Note Modem fitted to IW



PLC

Externally the XWP variant is slightly taller (20.4mm) in order to house the additional PLC circuitry, all other dimensions remain the same, and photos are included below to illustrate the difference in height.



Sincerely

A handwritten signature in blue ink, appearing to read 'Brett Goldsmith', is written over a horizontal line.

Brett Goldsmith

Product Manager

Imarda New Zealand Limited

16 July 2015