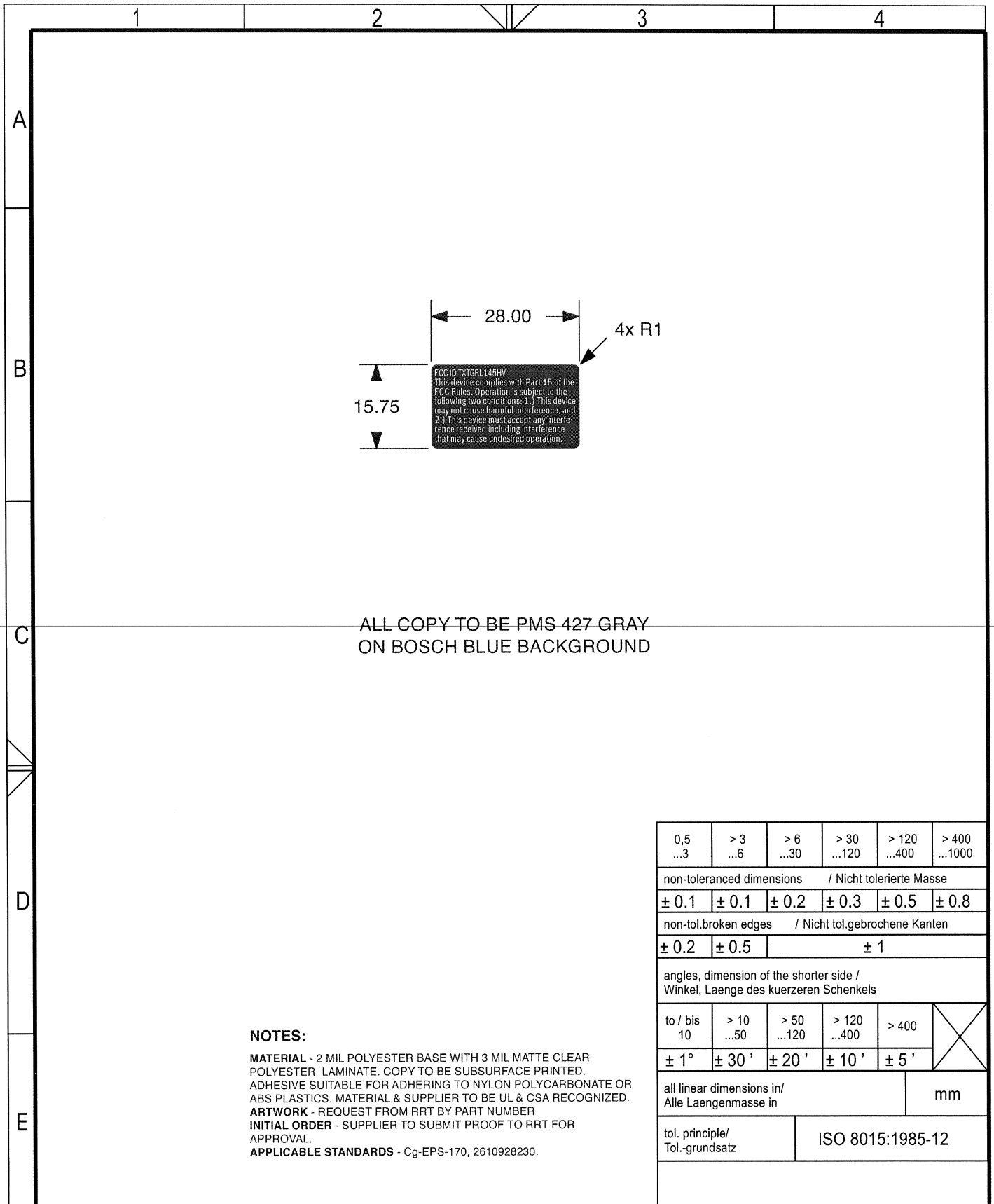




FCC label location



**NOTES:**

**MATERIAL** - 2 MIL POLYESTER BASE WITH 3 MIL MATTE CLEAR POLYESTER LAMINATE. COPY TO BE SUBSURFACE PRINTED. ADHESIVE SUITABLE FOR ADHERING TO NYLON POLYCARBONATE OR ABS PLASTICS. MATERIAL & SUPPLIER TO BE UL & CSA RECOGNIZED.  
**ARTWORK** - REQUEST FROM RRT BY PART NUMBER  
**INITIAL ORDER** - SUPPLIER TO SUBMIT PROOF TO RRT FOR APPROVAL.  
**APPLICABLE STANDARDS** - Cg-EP5-170, 2610928230.

0,5 ...3	> 3 ...6	> 6 ...30	> 30 ...120	> 120 ...400	> 400 ...1000
non-toleranced dimensions / Nicht tolerierte Masse					
± 0.1	± 0.1	± 0.2	± 0.3	± 0.5	± 0.8
non-tol.broken edges / Nicht tol.gebrochene Kanten					
± 0.2	± 0.5	± 1			
angles, dimension of the shorter side / Winkel, Laenge des kuerzeren Schenkels					
to / bis 10	> 10 ...50	> 50 ...120	> 120 ...400	> 400	X
± 1°	± 30'	± 20'	± 10'	± 5'	
all linear dimensions in/ Alle Laengenmasse in					mm
tol. principle/ Tol.-grundsatz			ISO 8015:1985-12		

AA	6035A00???	2008????	M.MOKEYEV	???	???	511	PT-BNA/EP5			
Ind.	Change/Aend.	YYYYMMDD	Drawn/Gez.	Checked/Gepr.	Releas./Freig.	BWN	Resp. dept./Verantw. Abt.	Add. info./Zus. Info.		
Treatment/ Behandlung							Missed details/Fehlende Angaben		Size/Gst.	
Mat./Stoff							From/Aus			
Lang./Spr. en/de		Wght./Gew.	<b>BOSCH</b>		FCC LABEL				Sheet/Bl. 1/1	
	Crit. P.	Scale/M.stab 1:1			Mat.meets/Stoffe s	Syst.	Doc.type DRW	2 610 003 485		DP/TD
MNR --			N2580-1	AI	Repl. for			Repl. by		