

Internal Photos

- for EPIRB models GME-MT603G and GME-MT603FG -

Figures 1-3 depict the top and bottom view of the EPIRB PCB with all components fitted. Figure 4 shows the top view of the EPIRB PCB in production process step prior to shield cans fitting.

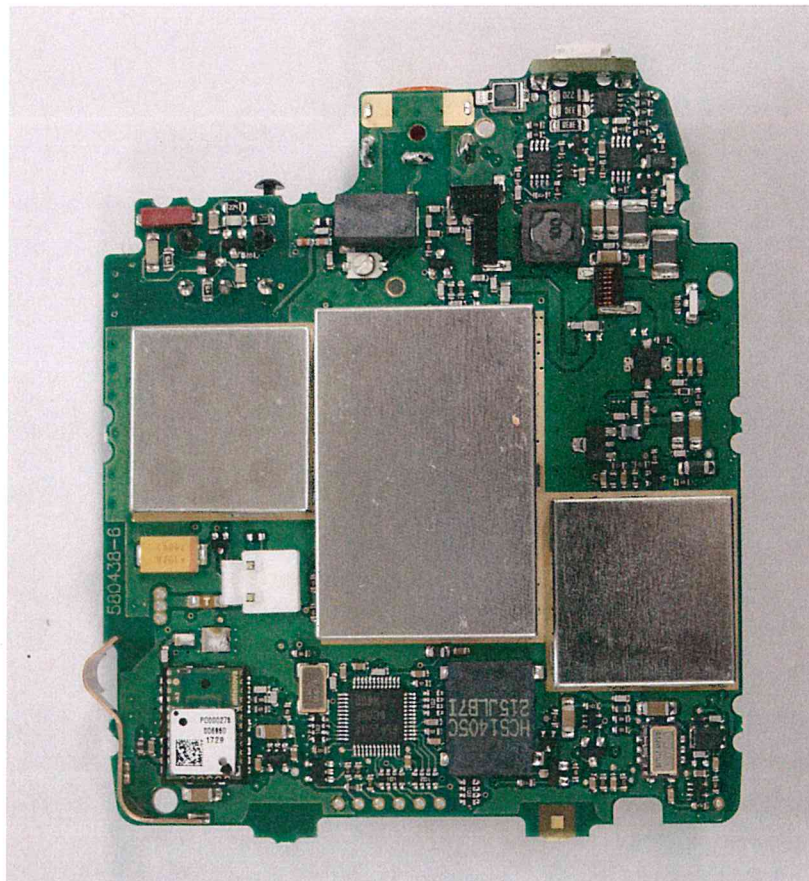


Figure 1 PCB Top view - with shields

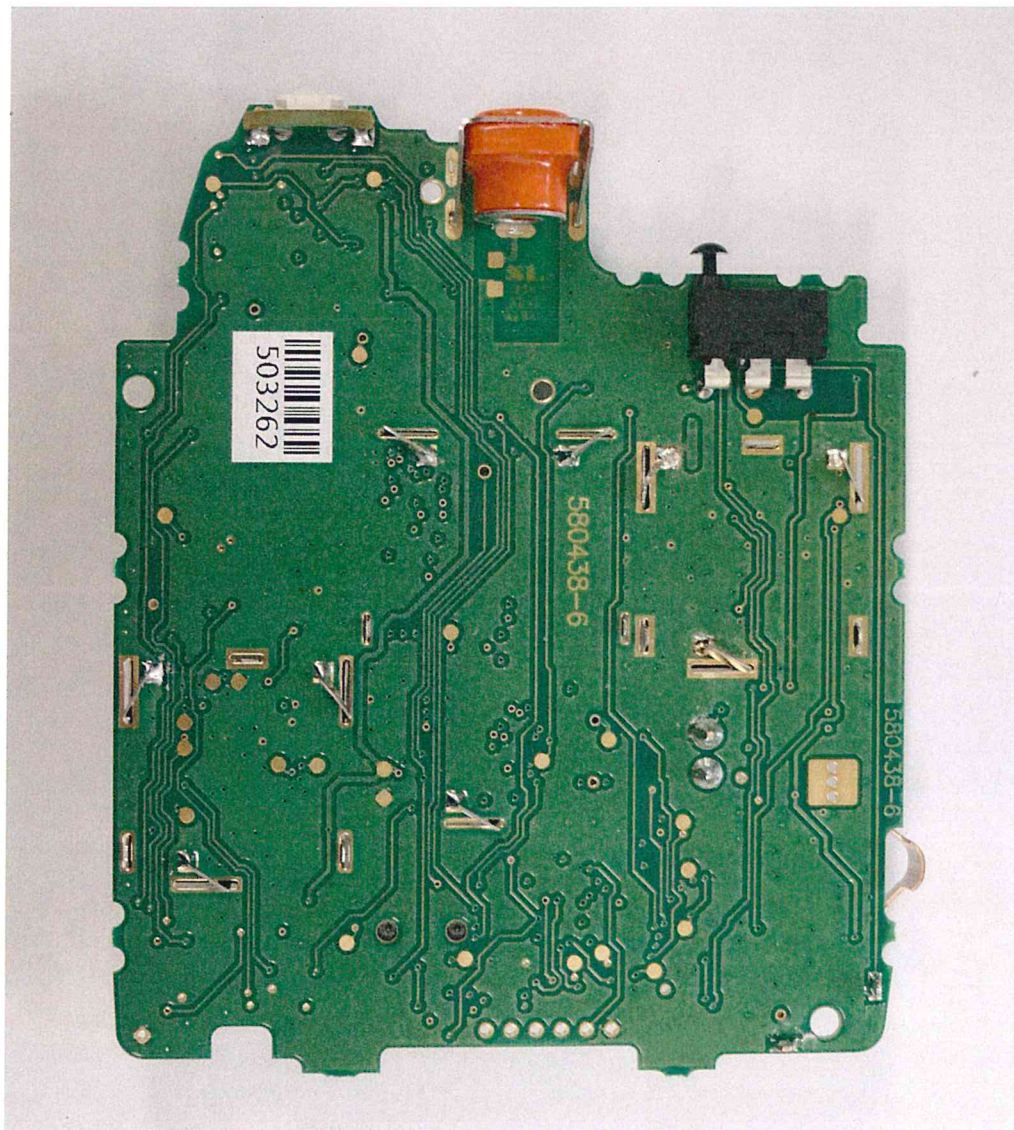


Figure 2 PCB bottom view

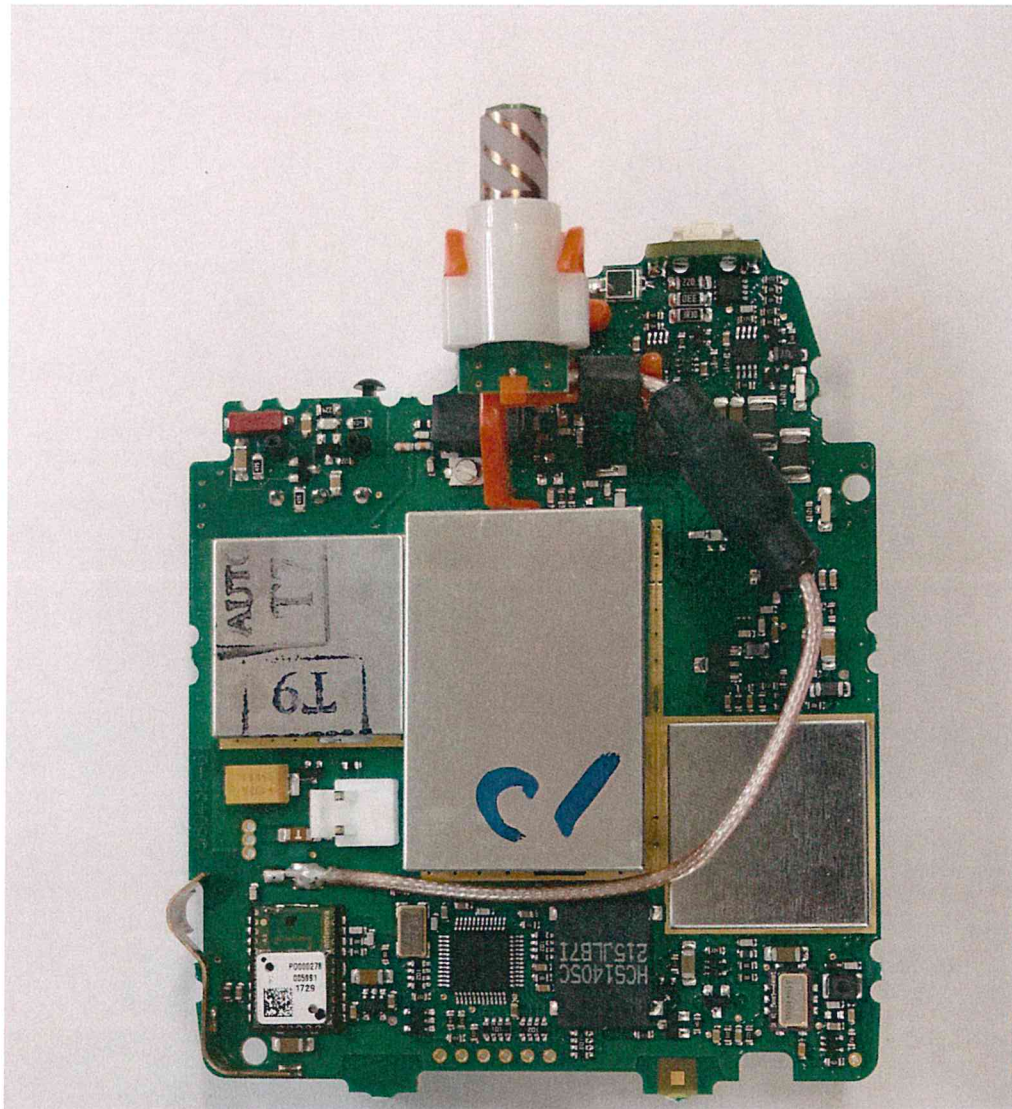


Figure 3 PCB Top view with GPS Antenna

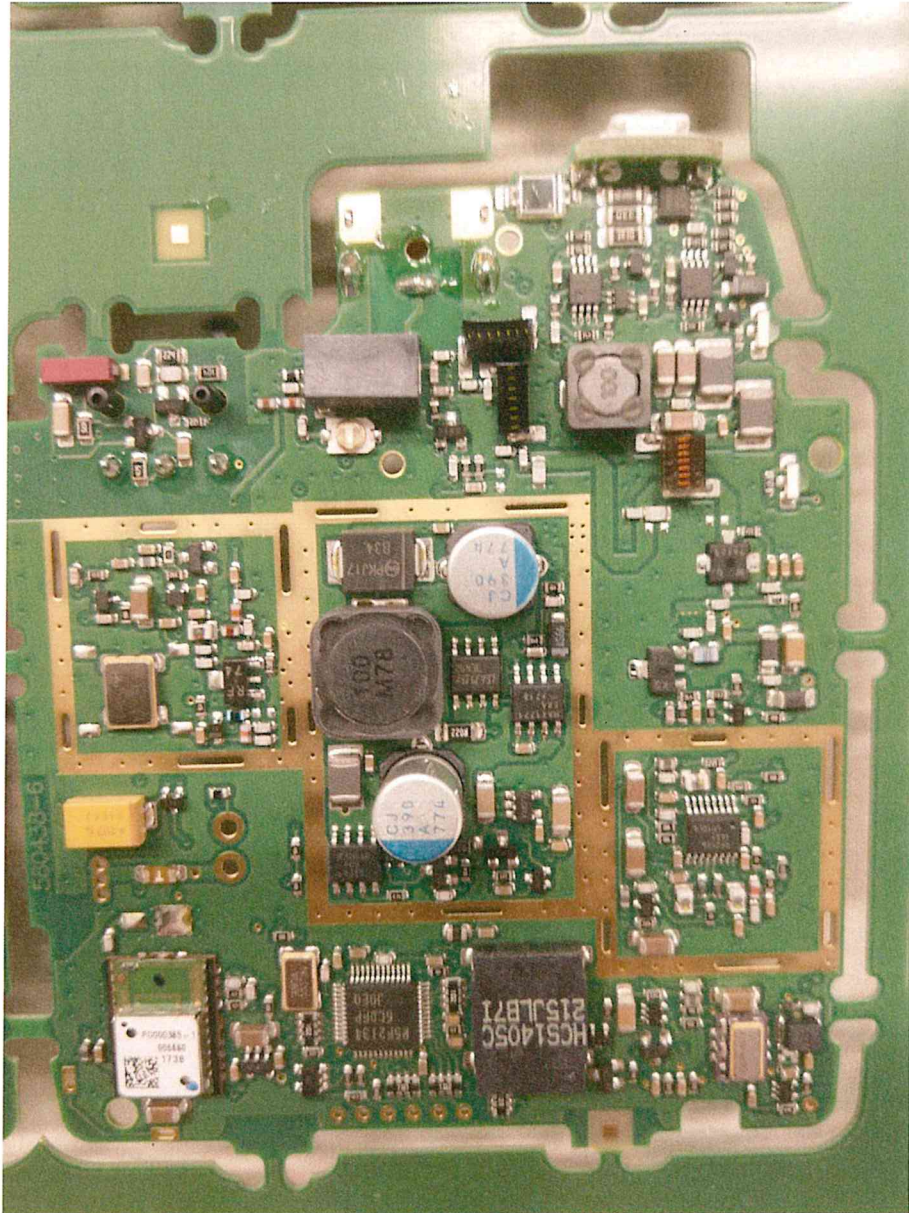


Figure 4 PCB Top view (in panelised form in production) before Shields fitting

Signed:



Zeljko Beljic, Beacon Team leader

Date:

09/10/2018

Standard Communications Pty Ltd trading as GME. ABN: 93 000 346 814 ACN: 000 346 814

gme.net.au T: (02) 8867 6000 | F: (02) 8867 6199 | Sales: 1300 463 463 | Email: enquiries@gme.net.au
Head Office: 17 Gibbon Road, Winston Hills, NSW 2153, Australia | PO Box 96, Winston Hills, NSW 2153, Australia