


GME

PRINTED IN ENGLISH
INTERNATIONAL : CE0168①
USA : FCC ID : TXJRM600D
CANADA : IC 7332A-RM600D
AUSTRALIA: 

RM600D

REMOTE UNIT TO SUIT GX600D



INFORMATION LEAFLET

WARNING: RADIO OPERATOR INFORMATION

This device complies with part 15 of the FCC Rules. Operation is subject to the following two conditions:

1. This device may not cause harmful interference, and
2. This device must accept any interference received, including interference that may cause undesired operation.

Any modifications not expressly approved in writing by Standard Communications to this equipment may void compliance with the appropriate regulatory body and may void the users authority to operate the equipment.

This device is only an aid to navigation. Performance is affected by many factors including environmental conditions and inappropriate handling. It is the operators responsibility to employ well informed judgement.

FCC AND INDUSTRY CANADA NOTIFICATION

Note: This equipment has been tested and found to comply with the limits for a Class B digital device, pursuant to Part 15 of the FCC Rules and Canadian ICES-003. These limits are designed to provide reasonable protection against harmful interference in a residential installation. This equipment if not installed and used in accordance with the instructions, may cause harmful interference to radio communications. However, there is no guarantee that interference will not occur in a particular installation. If this equipment does cause harmful interference to radio or television reception, which can be determined by turning the equipment off and on, the user is encouraged to try to correct the interference by one or more of the following measures:

- Increase the separation between the equipment and receiver.
- Connect the equipment into an outlet on a circuit different from that to which the receiver is connected.
- Consult the dealer or an experienced radio/TV technician for help.

PLEASE NOTE

The GME RM600D is a remote unit to suit the GX600D. Please refer to your GX600D manual for operating instructions.

INTRODUCTION

Congratulations on your purchase of the GME RM600D.

With its compact size and waterproof design it can easily be installed into almost any panel mounting location in your fly bridge or cabin.

The RM600D is totally designed and manufactured at our factory in Gladestville, Australia. Precision robots and the very latest manufacturing techniques ensure a consistent high quality is maintained, resulting in a communications system of extreme reliability and performance.

ACCESSORIES SUPPLIED

The RM600D is supplied with the following.

- Mounting bracket and Gimball knobs
- DC battery lead
- Remote interconnecting cable
- MC504 microphone
- Mounting hardware
- Information leaflet

Please immediately contact your point of purchase if any of these components are missing.

RM600D REMOTE UNIT

The RM600D remote unit provides a remote head connection to allow operation of the GX600D from a flybridge or second station on your vessel.

The RM600D conveniently plugs into the GX600D using an interconnecting cable and no additional interface wiring is required.

The RM600D is supplied with a DC lead for connection to a 12 Volt power source and 5 metres of terminated interconnecting cable. Additional terminated cables are available in 5 and 10 metre lengths.

When connected, the RM600D can duplicate all functions of the GX600D. In addition it includes an Intercom feature that allows internal communications between the GX600D and the RM600D.

The RM600D is supplied with a standard PTT microphone which is interchangeable with the alphanumeric microphone supplied with the GX600D. Because of the additional functions accessible from the alphanumeric microphone, master control is given to whichever device has the alphanumeric microphone connected. However the main unit GX600D always has priority. If the GX600D is switched off the system will not operate and no back lighting will show on the RM600D LCD display. Before

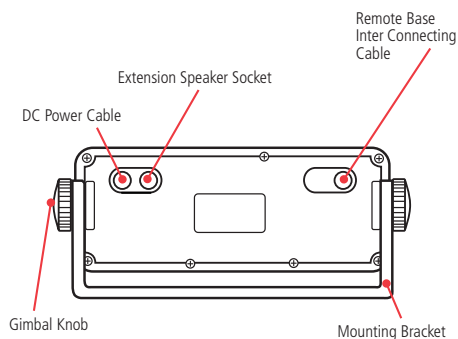
changing the microphones, both units should be switched off.

Note: Only one alphanumeric microphone should be connected to any GX600D/RM600D combination.

RESTRICTIONS OF USE

European Telecommunications Standard Institute (ETSI) has stipulated the specific requirements (EN 301 025-1/2/3) for marine radio with class D DSC feature. This equipment is not for use on SOLAS vessels or vessels on inland waterways. This remote control head to suit the GX600D is intended for use in European countries: DK, FI, FR, DE, GR, IE, IT, MT, NL, PT, ES, SE, GB, IS, NO AND TR.

REAR PANEL CONNECTIONS



SPECIFICATIONS

ELECTRICAL

Supply Voltage:	12 Volt Nominal 10.5-15.6 Volt Max. range Negative earth
Current Consumption:	Muted <200 mA Full Volume 700 mA

ENVIRONMENTAL

Temperature Range:	-10°C to 55°C
Solar Radiation:	Case UV stabilised
Water & Dust Resistance:	IP67 excluding external cabling
Compass Safe Distance:	300 mm

MECHANICAL

Dimensions:	164(W) x 65(H) x 55(D) mm
Weight:	450 grams

AUDIO OUTPUT POWER

External 4 Ohm Speaker:	4 Watts average
Internal Speaker:	2 Watts average

EXTERNAL CONNECTIONS

Microphone:	6 pin RJ12 Socket
D.C. Supply:	2 pin Polarized Blade Socket
External Speaker:	3.5 mm mini phono line socket (mono)

OVERCURRENT PROTECTION

Fuse: Inline 2 Amp 3 AG

INSTALLATION

INSTALLING THE UNIT

After choosing your location, hold the unit with the mounting bracket attached into the desired position and mark the location with a pencil. Remove the mounting bracket from the radio and drill the mounting holes. Bolt or screw the bracket in place using hardware suitable for the mounting surface. The unit is supplied with stainless steel screws; however, if the mounting surface is unsuitable for screws you may need to replace these with stainless steel bolts. Remember the fixings for overhead mounted units may have to withstand heavy pounding when the vessel is in rough water or being towed on a trailer.

SELECTING A LOCATION

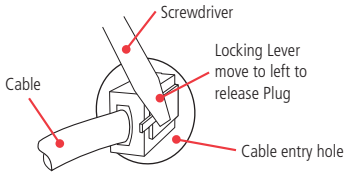
It is advisable to spend a little time selecting the best location for your RM600D. The mounting bracket can be rotated above, below or behind the radio enabling the radio to be mounted in a wide range of locations. In addition, using the optional flush mounting kits (MK600, MK001, MK002) the RM600D can be mounted directly in a panel or dashboard. The flush mounting kits allow for installation or replacement of any existing VHF radio.

REPLACING THE MICROPHONE

It is recommended that the microphone be left permanently connected to the RM600D, but if it must be disconnected, proceed as follows:

1. Insert a small screw driver between the rubber boot and the lip of the raised area on the front panel.
2. Ease the rubber boot out of the cable entry hole and slide it along the cable away from the front panel.

3. Identify the plug locking lever, work the screwdriver blade behind it and move the lever towards the plug body. At the same time gently pull the plug from the socket. (see diagram below).



If required, replacement microphones are available with plug and rubber boot already fitted.

WATER PROOFING CONNECTIONS

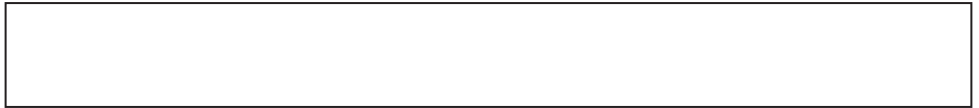
Although the RM600D itself is designed to resist the ingress of water, the cable connectors are not completely waterproof. After installation, the speaker and remote connectors should be wrapped in waterproof tape or similar to minimise the risk of corrosion or water damage. Do not use normal electrical tape as this will not provide an adequate seal against water. The connectors should then be positioned where they are not directly exposed to the elements.

WARRANTY

GME limit this warranty to the original purchaser of the equipment.

GME warrant the RM600D to be free from defects in material and workmanship for a period of twelve (12)

NATIONAL DISTRIBUTOR DETAILS:



A Division of: **Standard Communications PTY LTD**



Head Office: SYDNEY- Locked Bag 2086, North Ryde N.S.W. 1670, Australia. Tel: +61 2 9844 6666, Fax: +61 2 9844 6600.

MELBOURNE

7 Mircro Circuit
Dandenong South
Vic. 3175
Tel: +62 3 9798 0988
Fax: +62 3 9798 0177

ADELAIDE

14 Phillips St.
Thebarton
S.A. 5031
Tel: +61 8 8234 2633
Fax: +61 8 8234 5138

PERTH

Unit 1
10-12 Harvard Way
Canning Vale
W.A. 6155
Tel: +61 8 9455 5744
Fax: +61 8 9455 3110

BRISBANE

Unit 1
89-101 Factory Rd.
Oxley
Qld. 4075
Tel: +61 7 3278 6444
Fax: +61 7 3278 6555

SYDNEY

Unit B
22-24 College St.
Gladesville
N.S.W. 2111
Tel: +61 2 9879 8888
Fax: +61 2 9816 4722

AUCKLAND

2/24 Bishop Dunn Place,
East Tamaki.
Manukau
N.Z. 2013
Tel: +64 9 274 0955
Fax: +64 9 274 0959

For customers outside Australia and New Zealand, please contact your local GME retailer or email to: export@gme.net.au

months from the date of purchase from their authorised retailer.

Should the product require servicing during this period, all labour and parts used to effect repairs will be supplied free of charge. GME reserve the right to determine whether damage has been occasioned by accident, misuse or improper installation whereby the warranty would be void, including equipment which has been damaged due to:

- Incorrect or reverse polarity connection to a battery or power supply or to an incorrect supply voltage.
- Operation of the main unit GX600 without an antenna or by connection to an antenna which has been incorrectly installed, resulting in damage to the radio's output circuit.
- Non-factory modifications.

Procedure to be followed by Claimant: In the event of a defect occurring during the warranty period, the original purchaser may return the defective unit along with suitable proof of purchase date (i.e. receipt, docket, credit card slip etc.) and a full description of the defect to the retailer from whom the unit was purchased. All freight charges incurred for transportation by the retailer or GME are the purchaser's responsibility.

GME AFTER SALES SERVICE

Your GME radio is especially designed for the environment encountered in marine installations. The use of all solid state circuitry, careful design and rigorous testing, result in high reliability. Should failure occur however, GME maintain a fully equipped service facility and spare parts stock to meet the customer's requirements long after expiry of the warranty period.