

General Information

IMPORTANT INFORMATION ON SAFE AND EFFICIENT OPERATION
READ THIS INFORMATION BEFORE USING TSR750.

NOTICE

I FCC warning

This equipment generates uses and can radiate radio frequency energy and, if not installed and used in accordance with the instructions, may cause harmful interference to radio communications. However, there is no guarantee that interference will not occur in a particular installation.

If this equipment does cause harmful interference to radio or television reception which can be determined by turning the equipment off and on, the user is encouraged to try to correct the interference by one or more of the following measures.

- Reorient or relocate the receiving antenna.
- Increase the separation between the equipment and receiver.
- Connect the equipment into an outlet on a circuit different from that to which the receiver is connected.
- Consult the dealer or an experienced radio, TV technical for help.
- Only shielded interface cable should be used.

Finally, any changes or modifications to the equipment by the user not expressly approved by the grantee or manufacturer could void the users' authority to operate such equipment.

I CE warning!

Changes or modifications not expressly approved by the party responsible for compliance could void the user's authority to operate the equipment.

I EN Test Regulation Version.

ETSI EN 300 328 V1.7.1(2006-10)

ETSI EN 301 489-1 V1.6.1:2005

ETSI EN 301 489-17 V1.4.1:2004



C o n t e n t s

Chapter 1 | Preparing to Use the Product

Product Features	5
Safety Precautions	6
Components	8
Parts Diagram	9
Recharging and Turning Power On/Off	12
Software Installation	13
Connecting the Product	18
Product Specifications	19

Chapter 2 | Learning to Use the Menu

Display Structure	22
<DEVICES> Mode	25
OPERATING SET-UP	26
PHOTO	38
UTILITY	43
SETTING	49



Chapter 1

Preparing to Use the Product

Please note that product can be updated without prior notice. So it can be different from user guide.

Please check user guide at the web site(<http://www.remotesolution.co.kr>).

Product Features

Product Features	5
------------------------	---

Safety Precautions

About the Power Supply	6
About the Product	7

Components

Standard	8
----------------	---

Parts Diagram

Remote (Front)	9
Remote (Rear)	10
Cradle	11

Recharging and Turning Power On/Off

Recharging with an Adapter	12
Turning the Remote Control Power On/Off	12

Software Installation

TSR750 PC Manager Installation	13
Microsoft ActiveSync 4.2 Installation	15
USB Driver Installation	17

Connecting the Product

USB Connection	18
----------------------	----

Product Specifications

Product Specifications	19
------------------------------	----



Product Features

I Product Features

- 1 Touch screen that facilitates usage convenience
- 2 Simple user interface that promotes intuitive use
- 3 Low power consumption that extends battery life
- 4 Distinctive design including a 3.5-inch color LCD
- 5 RF function that enables multi-room control



Safety Precautions

The following information is included to promote user safety and prevent any possible injury or property damage. Please read the directions carefully and use the product correctly.

I About the Power Supply

Only charge using the power supply provided.

An incorrect power supply can cause damage to the product.



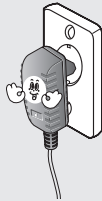
Do NOT touch the power plug with wet hands.

This can result in electric shock.



Make sure the plug fits tightly into the outlet.

Loose plugs can cause electric shock.



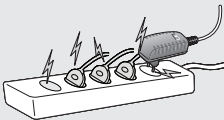
Do not fold the power cable or place anything heavy on it.

This can result in electric shock.



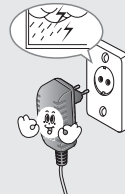
Do not use too many plugs in a single power outlet.

This can result in electric shock.



Unplug the power plug during electrical storms.

Lightning can cause an electric shock.





Safety Precautions

I About the Product

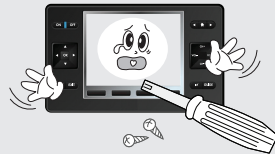
Do not use the product in high temperatures or high humidity.

This can cause damage to the product.



Do not disassemble the product.

This can result in damage to the product.



Do not place heavy objects on the product.

This can cause breakdown or damage to the product.



Clean the product with a soft, dry cloth. Do NOT use any flammable cleaners or chemicals.

This can cause damage to the surface of the product.



Do not allow foreign objects or liquid to get inside the product.

This can result in damage to the product.



Do not allow children to play with the remote.

If the product is dropped, this can cause damage or injury.





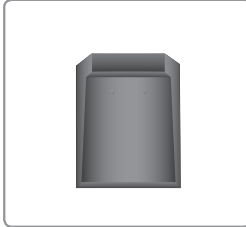
Components

Components may be replaced without any prior notice in the interest of improving product quality or performance. The components shown here in the manual may differ from the components included with purchase.

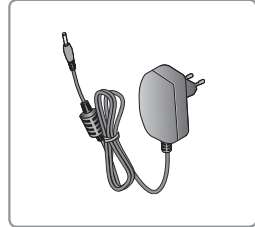
I Standard



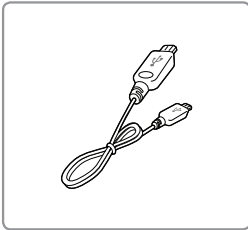
Main Unit



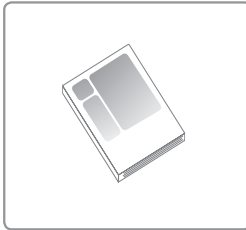
Cradle



Adapter
(100~240Vac/50~60Hz, 5Vdc/2A)



USB Cable



Product Manual



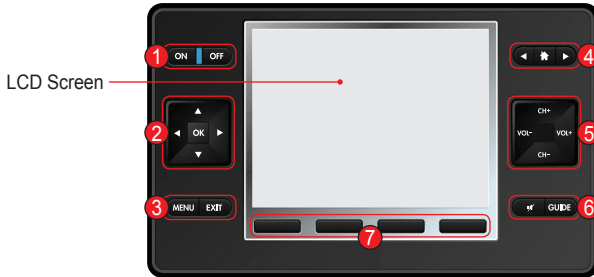
SETUP CD



Parts Diagram

The diagram may differ with the purchased product.

I Remote (Front)



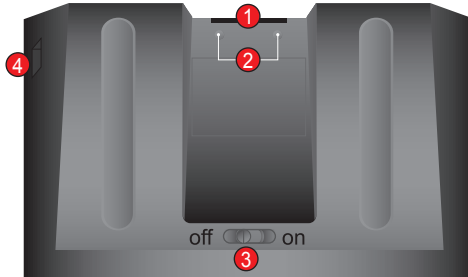
1	ON, OFF	POWER	Enters POWER [ON/OFF] CODE for the set device
2	▲▼◀▶	ARROW	Enters [UP/DOWN/LEFT/RIGHT] CODE for the set device
	OK	OK	Enters OK and/or ENTER CODE for the set device
3	MENU	MENU	Enters MENU CODE for the set device
	EXIT	EXIT	Enters EXIT CODE for the set device
4	◀▶	PAGE MOVE	Flips to [NEXT/PREVIOUS] page shown on the device screen
	🏠	HOME	Moves to the HOME / UP Screen
5	CH +, CH -	CHANNEL	Enters CHANNEL [UP/DOWN] CODE for the set device
	VOL +, VOL -	VOLUME	Enters VOLUME [UP/DOWN] CODE for the set device
6	🔇	MUTE	Enters MUTE CODE for the set device
	GUIDE	INFO	Enters Guide CODE for the set device
7	FUNCTION 1, 2, 3, 4		Moves directly to Page [1, 2, 3, 4] on the set device * The FUNCTION key can be set in the manager.



Parts Diagram

The diagram may differ with the purchased product.

I Remote (Rear)



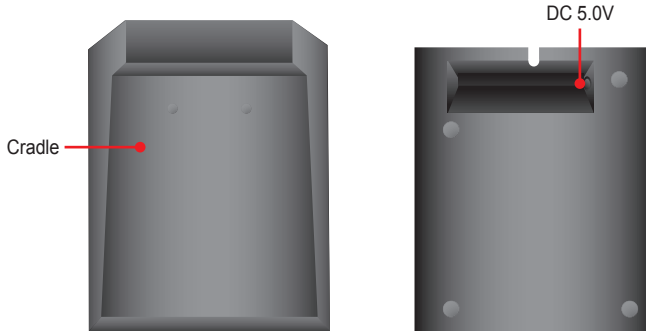
1	IR Window	Used when using a wireless remote control.
2	Cradle connector	Connects to the cradle.
3	Power	Sets power on/off
4	USB Port	Connects to a USB cable



Parts Diagram

The diagram may differ with the purchased product.

I Cradle



Note

- The LED turns red during charging, and blue when charging is complete.
Recharging time can vary (approx. 3~4 hours)

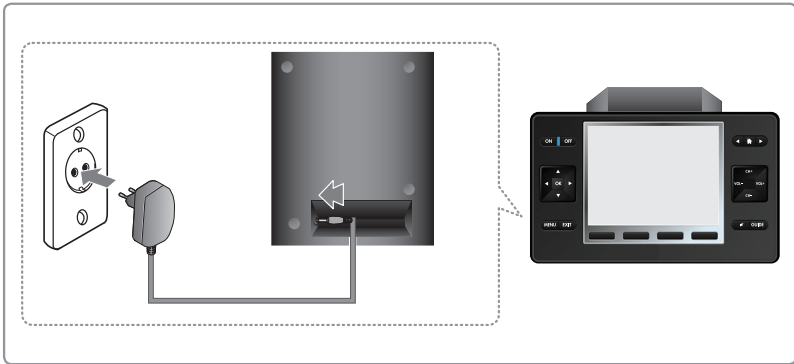


Recharging and Turning Power On/Off

I Recharging with an Adapter

Insert the adapter cable into the cradle and then plug the other end into a power outlet. When recharging, do so with the power switch at the bottom of the rear side of the remote control set to [ON]. (Note, if the power switch is set to [OFF], recharging is not performed.)

- 1) In case of malfunction, power off and then power on product.
- 2) In case of malfunction, after fully charging battery, retry operation.

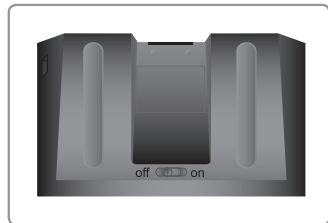


I Turning the Remote Control Power On/Off

Control using the power switch at the bottom rear of the remote control.

Note

If this remote control is subjected to excess voltage above 6.0V, the protective circuit within the device becomes activated, thus discontinuing normal remote control operation. To use normally, turn the remote control OFF and ON.

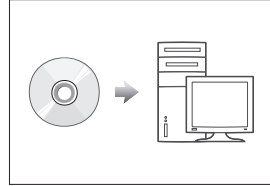




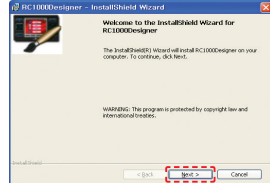
Software Installation

I TSR750 PC Manager Installation

- 1 Insert the Setup CD in the CD-ROM drive.
The installation program will run automatically.

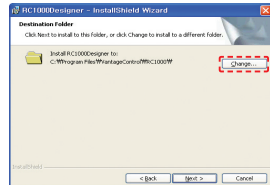


- 2 Click the [Next] icon.

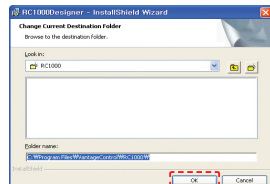


- 3 To change the PC folder for installation, click the [Change] icon.

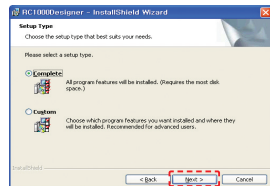
Clicking the [Next] icon will move directly to the installation screen in 5).



- 4 After designating the desired folder for installation, click the [OK] icon.



- 5 Click the [Next] icon.

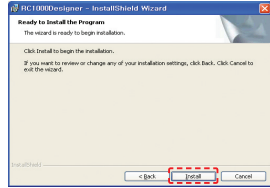




Software Installation

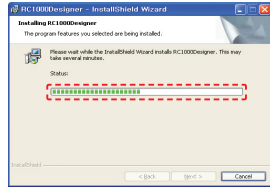
6

Click the [Install] icon.



7

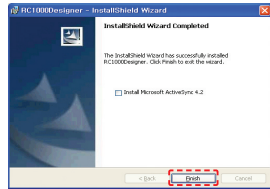
Wait until the installation process has been completed.



8

If the PC on which the installation was performed has the Microsoft ActiveSync program installed, click the [Finish] icon and end the installation.

If the Microsoft ActiveSync program is not already installed, check the box marked [Install Microsoft ActiveSync 4.2] and click the [Finish] icon to perform Microsoft ActiveSync 4.2 installation. (Please refer to pages 16~17 for detailed installation instructions.)



9

When the program installation is fully complete, the  icon is created on the desktop.

Double-click the icon to run TSR750 PC Manager.

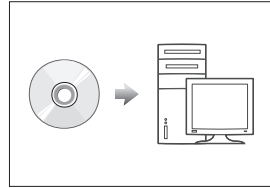
Software Installation

I Microsoft ActiveSync 4.2 Installation

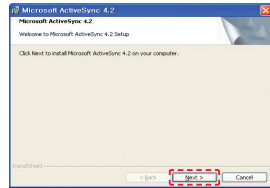
- 1 Insert the Setup CD in the CD-ROM drive.

There are two ways to install Microsoft ActiveSync 4.2.

 1. Install together with TSR750 PC Manager.
 2. Run the Setup.exe file located in the Setup CD in [Program Files\RemoteSolution\TSR750\ActiveSync].



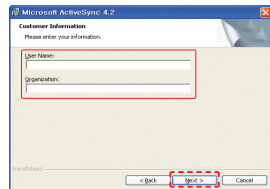
- 2 Run the Setup.exe file located in the Setup CD in [Program files\RemoteSolution\TSR750\ActiveSync]. Click the [Next] icon in the screen that appears.



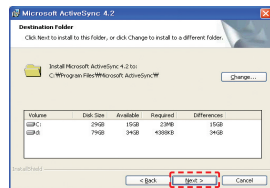
- 3 After selecting [I accept the ...], click the [Next] icon.



- 4 Fill in the User Name and Organization fields and click the [Next] icon.



- 5 After confirming the hard disk and folder of the PC for installation, click the [Next] icon. Press the [Change] icon to change the folder.

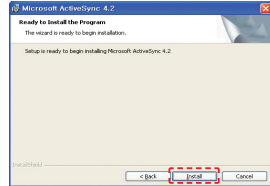




Software Installation

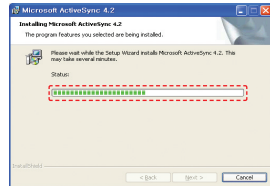
6

Click the [Install] icon.



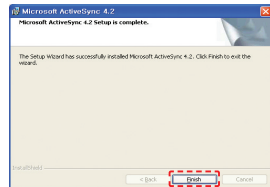
7

Wait until the installation process has been completed.



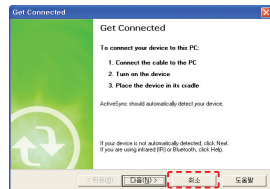
8

Click the [Finish] icon.




9

When the screen as shown appears, click the [Cancel] icon.



10

When the installation is fully complete, the  icon appears at the lower right of the window. Turn the remote control power ON, and connect it to the PC via the USB cable.

When connecting the remote control to the PC for the first time, the USB driver must be installed. (Please refer to pages 17~18 for detailed installation instructions.)

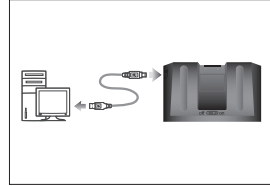


Software Installation

Certain differences may occur depending on the user's OS environment.

I USB Driver Installation

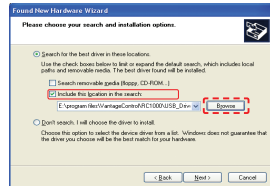
1 Turn the remote control power ON, and if connecting to a PC for the first time, the USB driver must be installed. Upon first connection, popup window appears.



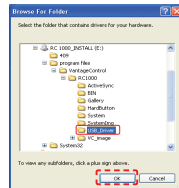
2 After selecting [Install from a list ...], click the [Next] icon.



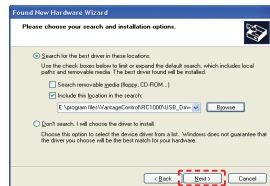
3 After selecting [Include this location ...], click the [Browse] icon.



4 Select the [program files\RemoteSolution\TSR750\USB_Driver] folder in the SETUP CD. Click the [OK] icon in the screen that appears.



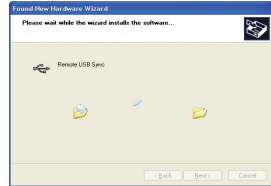
5 Click the [Next] icon.



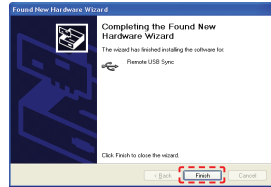


Software Installation

6 Wait until the installation process has been completed.



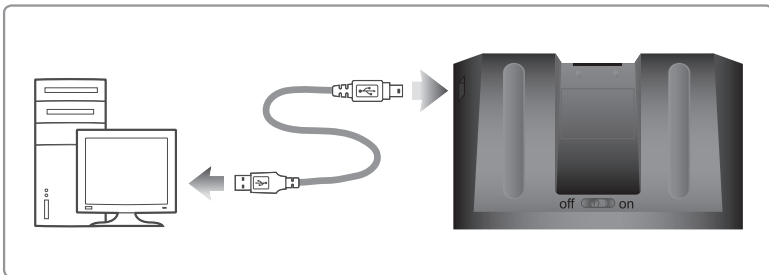
7 Click the [Finish] icon to end the installation.



Connecting the Product

I USB Connection

Connect the USB cable provided into the USB port of the product.





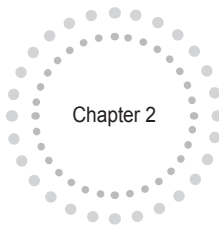
Product Specifications

Due to ongoing product performance and/or quality improvements, the following information is subject to change without prior notice.

I Product Specifications

	Item	Specification
General	Product Size	160 X 95 X 20mm
	Product Type	Portable UR Remote Control
	Operating System	WINCE 5.0
	Usable Memory	128 MByte (including OS)
	USB Download	USB 1.1
	Battery	3.7V / 1800mA
	Button	22 External Buttons
Image	Color LCD	Samsung 3.5" TFT LCD (320X240)
	Supported Image File Types	BMP, JPG, PNG
Audio	Channel	MONO (Built-In Speaker)
	Supported Audio File Types	MP3, WAV
Operation Distance	IR Operation Distance	MIN 10m
	RF Operation Distance	MIN 20m
Operation Voltage		3.2V~5.4V
Temperature	Operation	0°C ~ +35°C
	Storage	-20°C ~ +70°C
Details	Processor Type	332-FBGA
	Processor	Samsung S3C2442 Processor 300MHz
	CPU Core	ARM 920T
	Touch Panel	Touch Panel Controller ADS7846
	Motion Sensor	LIS302D
	IR	Infrared
	ZigBee	2.4Ghz [IEEE 802.15.4 Standard]
	RUN	MAX 250mA @ 3.7V
	Sleep	MAX 4mA @ 3.7V





Chapter 2

Learning to Use the Menus

The following content is subject to change according to user needs.
The description of any change can be found in the Customer Support section at <http://www.remotesolution.co.kr>.

Display Structure

Main Screen	22
REMOTE - Screen	23
<DEVICES> - TV Screen	24

<DEVICES> Mode

<DEVICES> - Using the TV Remote Control	25
---	----

OPERATING SET-UP

BRAND(CODE) SET-UP (TV Remote Control Setting)	26
CODE LEARNING	29
SELECT SIGNAL BETWEEN IR/RF(Network Mode)	31
SELECT SIGNAL BETWEEN IR/RF (Stand_Alone Mode)	33
PAIRING THE REMOTE CONTROL WITH THE RECEIVER (Network Mode).	35
CONFIGURATION (TOUCH, EXTERNAL BUTTON SOUND Settings)	37

PHOTO

PHOTO Function Buttons	38
PHOTO SET-UP (SLIDE MODE)	39
PHOTO DISPLAY	40
Music File and Image File Saving	42

UTILITY

UTILITY Main Screen	43
Calendar	44
Calculator	45
Program Version	45
Game	46
Game Settings	47
Game Instructions	48

SETTING

SETTING Main Screen	49
SYSTEM	50
START PROGRAM	51
DISPLAY MODE SET-UP WHILE CHARGING	52
DIMMING MODE	53







Display Structure

I Main Screen

Press the [Menu] icon in the LCD screen of the remote control to open the menu.



1		REMOTE	Moves to the device group to be controlled.
2		PHOTO	Moves to the playback menu for image files.
3		UTILITY	Goes to the user preferences menu.
4		SETTING	Moves to the system settings menu.



Display Structure

I REMOTE - Screen



1	Menu	Moves the <DEVICES> selected by the user.
2	Device Settings	Moves to the device settings menu.

After enter the setting mode by pressing Device Settings button, screen can be different depending on the remote mode.





Display Structure

I <DEVICES> - TV Screen



1	OPERATION ICONS	Used to operate device functions.
2	FUNCTION BUTTONS	Moves to the page of the set device.



<DEVICES> Mode

[<TV>, <AVR>, <TIVO>, <DIRECTV>, <DVR>, <DVD>, <CABLE>, <SATELLITE>], etc.

Follow the same instructions to move to the [DEVICES] menu.

I <DEVICES> - Using the TV Remote Control

- 1 Press the [REMOTE] icon on the screen to open the menu.

The [REMOTE] screen appears.



- 2 Press the [TV] icon on the screen.

The [DEVICES] screen appears.



- 3 Press and use the operation icons on the <TV> screen.

Use the product's [◀▶] buttons to move between pages.
(refer to page 9)



- 4 Press the [HOME] button the end the mode.





OPERATING SET-UP

I BRAND(CODE) SET-UP (TV Remote Control Setting)

- Turn on the desired TV.
- Ex : TV brand name LG (Goldstar).
- Point the remote control at the TV.

1 Press the [REMOTE] icon on the screen to open the menu.

The [REMOTE] screen appears.



2 Press the [Settings] icon on the screen.

The [Settings] screen appears.



3 Press the [NAME-TV] icon on the screen.

The [DEVICES] screen appears.



4 Press the button of the device to be set.

If the selected device is not displayed on the screen, press [◀▶] button to move between pages.

Ex.) TV





OPERATING SET-UP

5 Press the [DEVICE-TV] icon on the screen.



6 Press the button of the device to be set.

The device here is that of the database.
Ex.) TV



7 In the screen, press the first letter "L" of the TV brand.
If the TV brand is the same, press the [CODE] button.

The models held by a brand increase by one and are
outputted per each instance of pressing the
[LG(GOLDSTAR)] icon.

(Note: Continuous pressing results in the continuous output
of the same model.)

