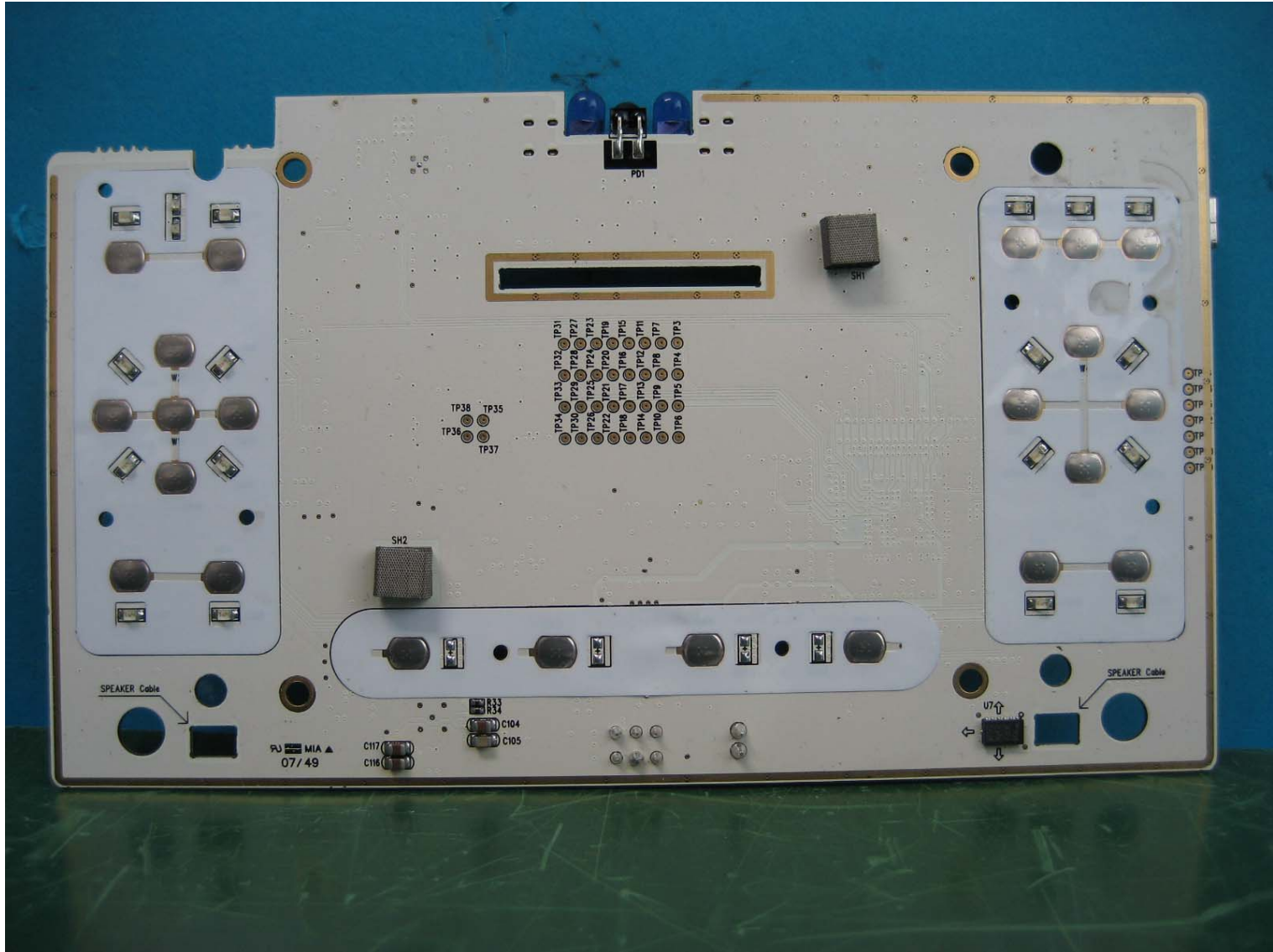
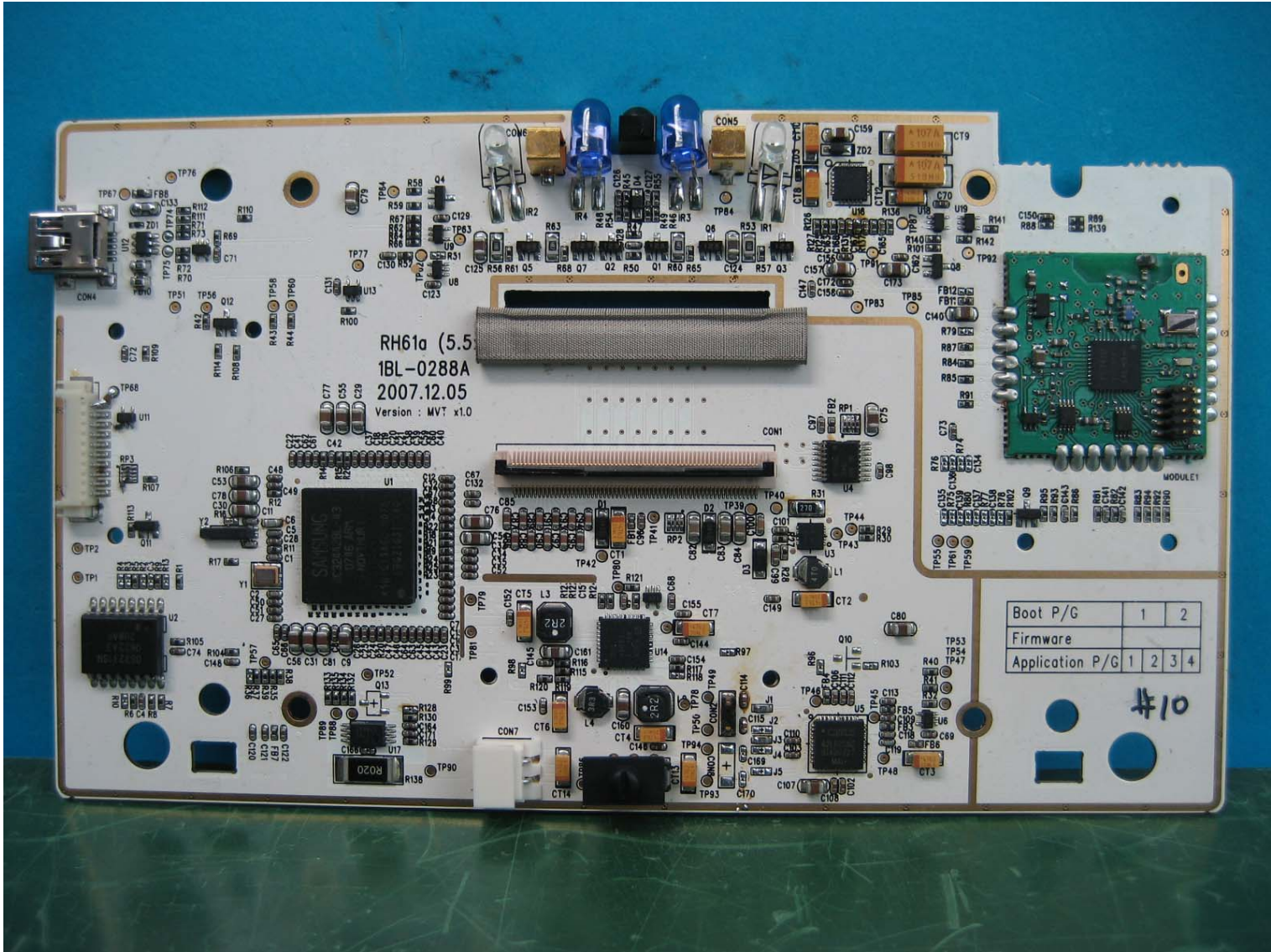


RH61a (5.1  
1BL-0288A  
2007.12.05  
Version : MVT x1.0

Boot P/G	1	2		
Firmware				
Application P/G	1	2	3	4

#10





RH61a (5.5  
1BL-0288A  
2007.12.05  
Version: MVT v1.0

Boot P/G	1	2		
Firmware				
Application P/G	1	2	3	4

#10

