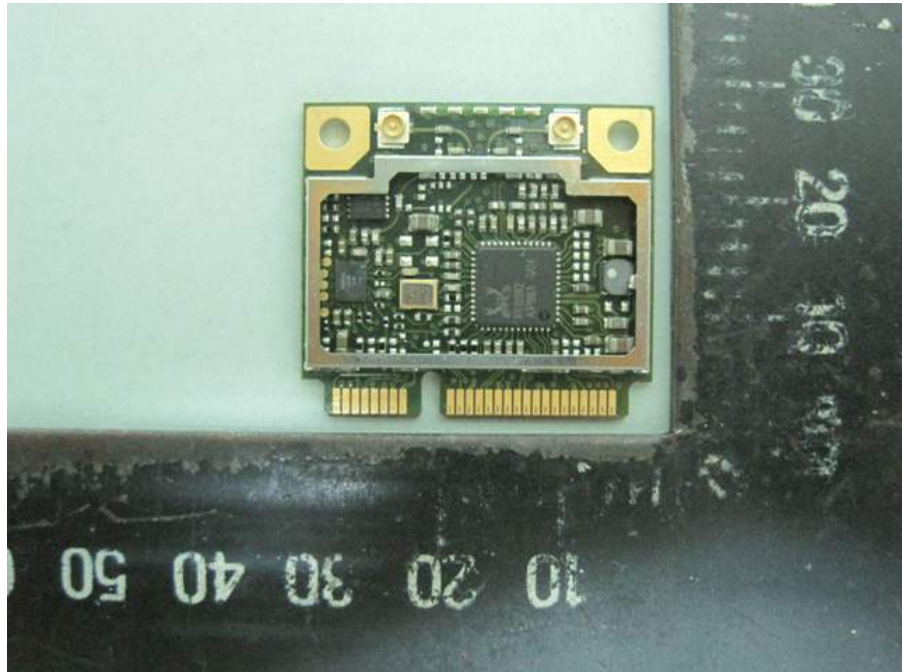


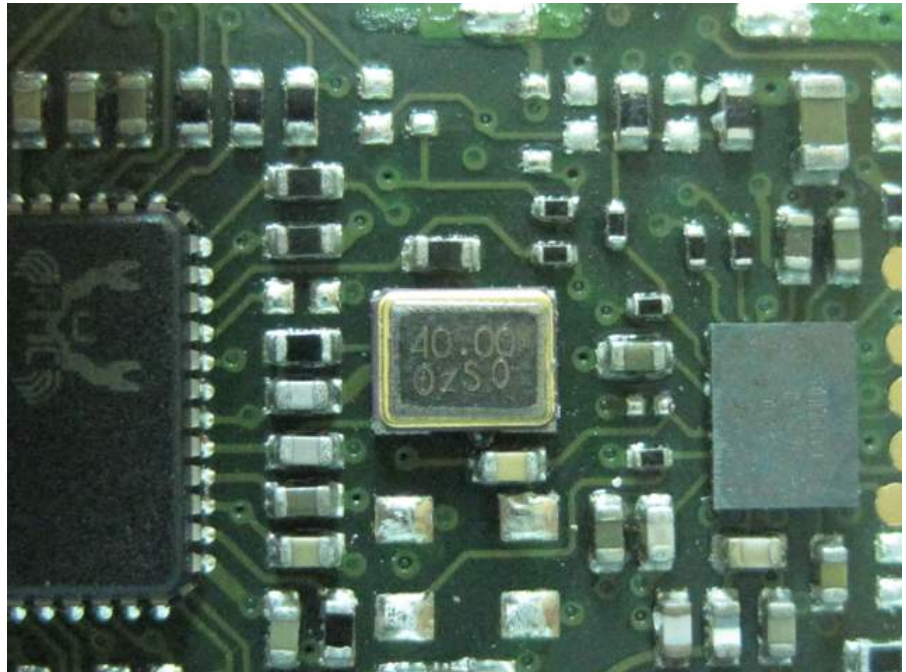
APPENDIX A. Photographs of EUT

<Main Source>:

EUT Type 1:

Dual Port Diversity Transmitter
(with assembly by soldering
frame and cover)

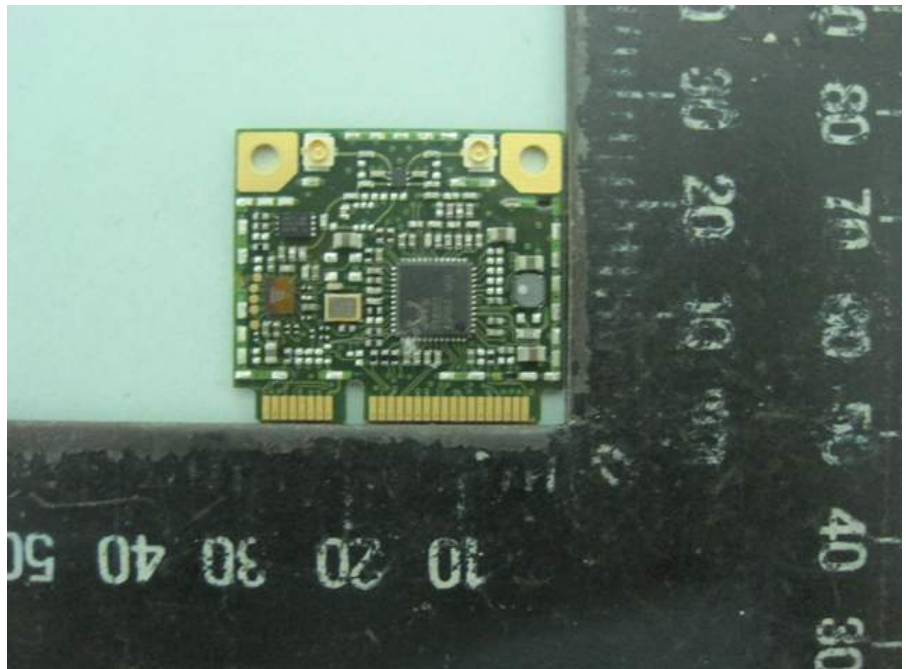


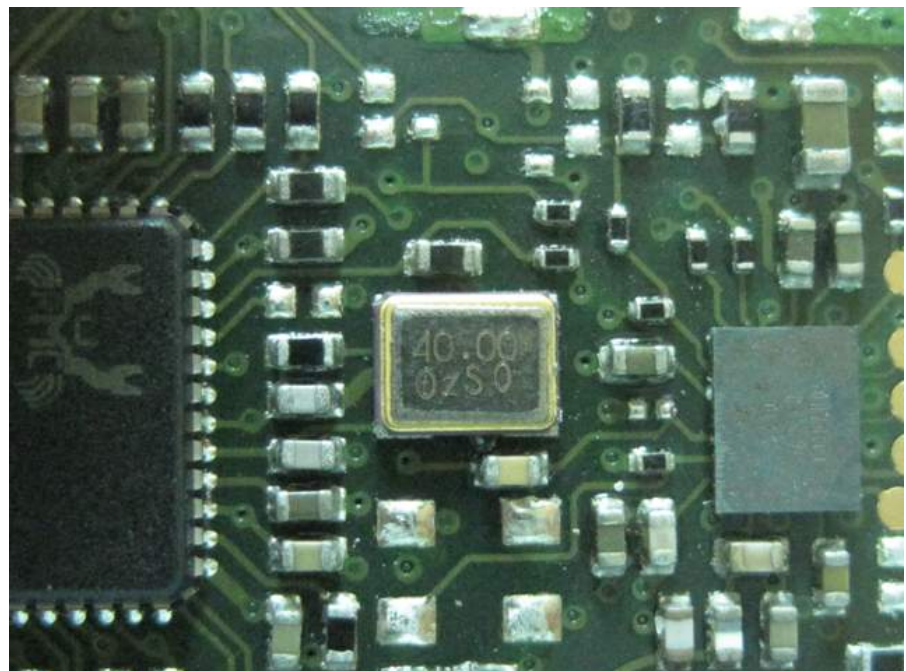
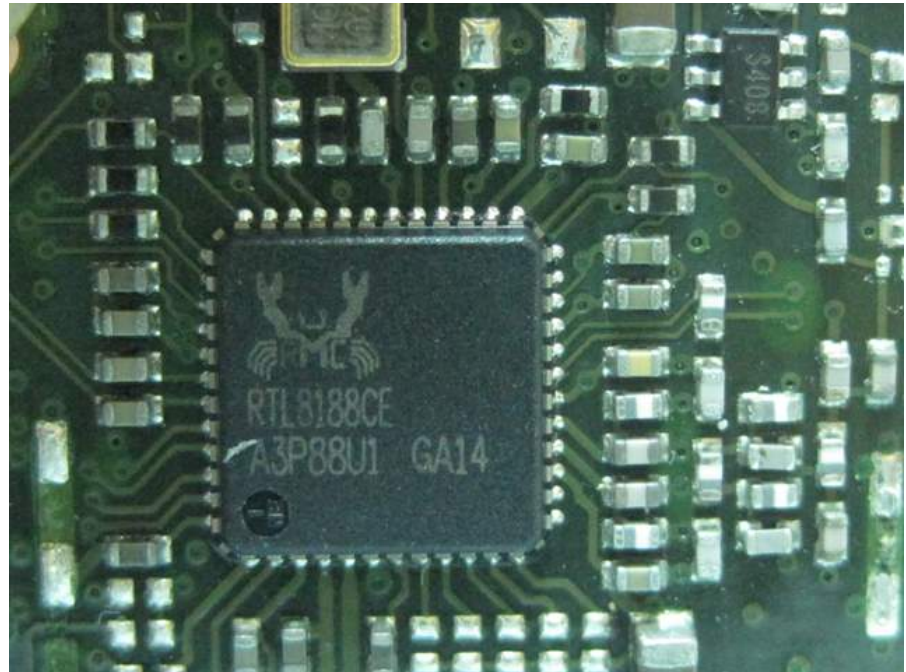


<Main Source>:

EUT Type 1:

Dual Port Diversity Transmitter
(with one piece splicing by
soldering)





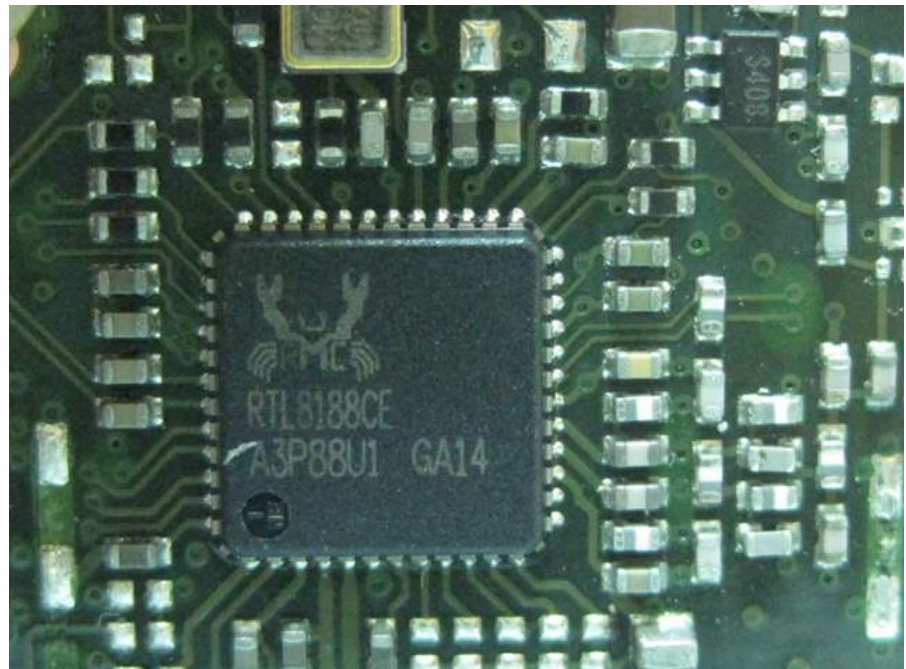
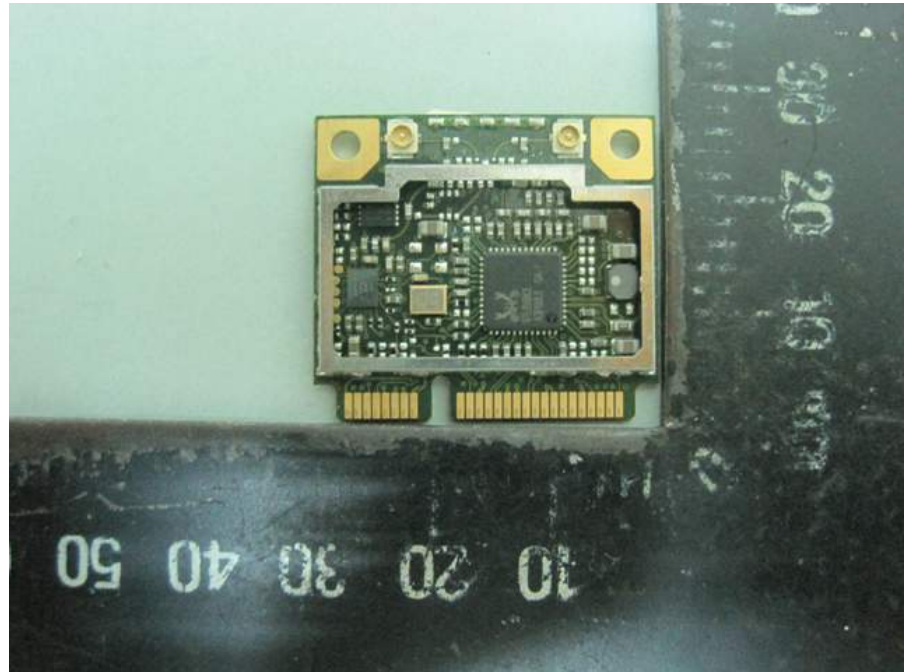
<Main Source>:

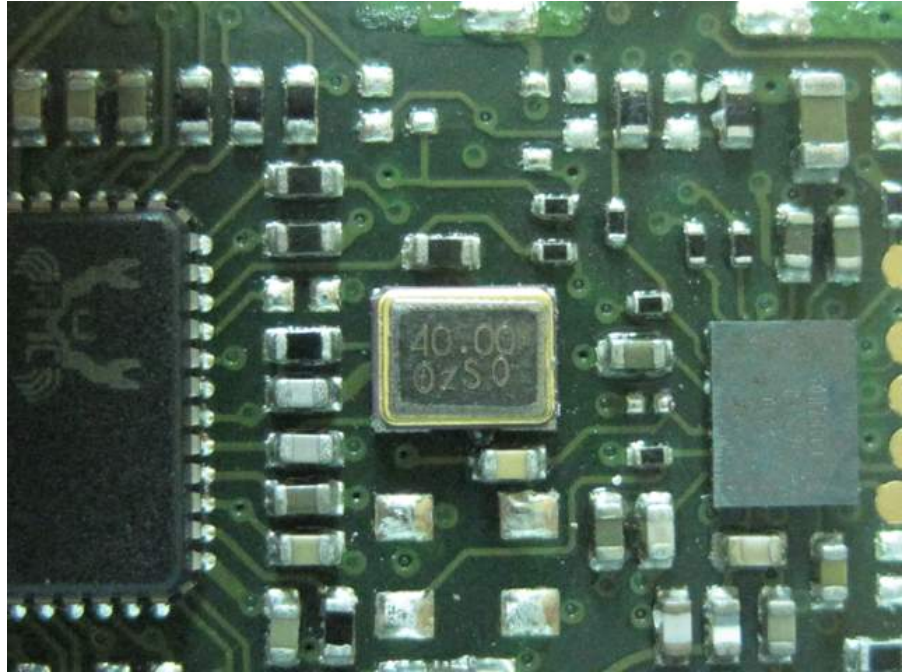
EUT Type 2:

Dual Port Fixed Path

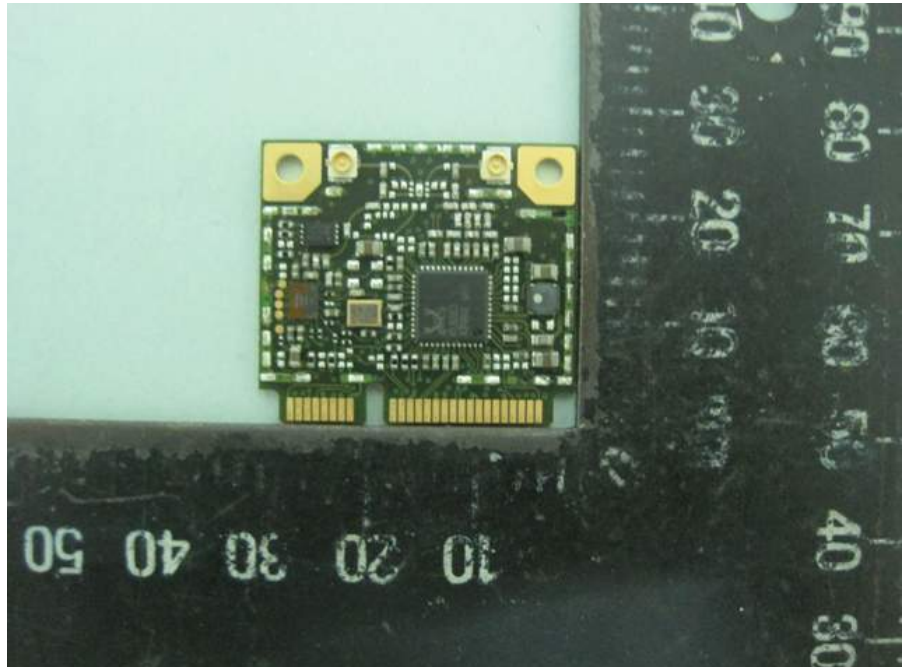
Transmitter-Fixed

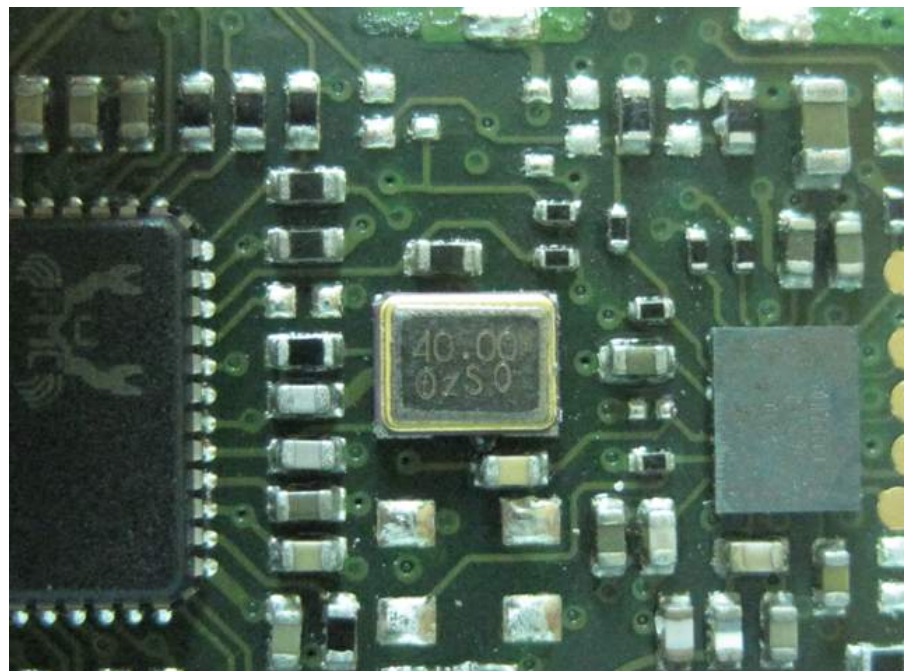
(with assembly by soldering
frame and cover)





<Main Source>:
EUT Type 2:
Dual Port Fixed Path
Transmitter-Fixed
(with one piece splicing by
soldering)





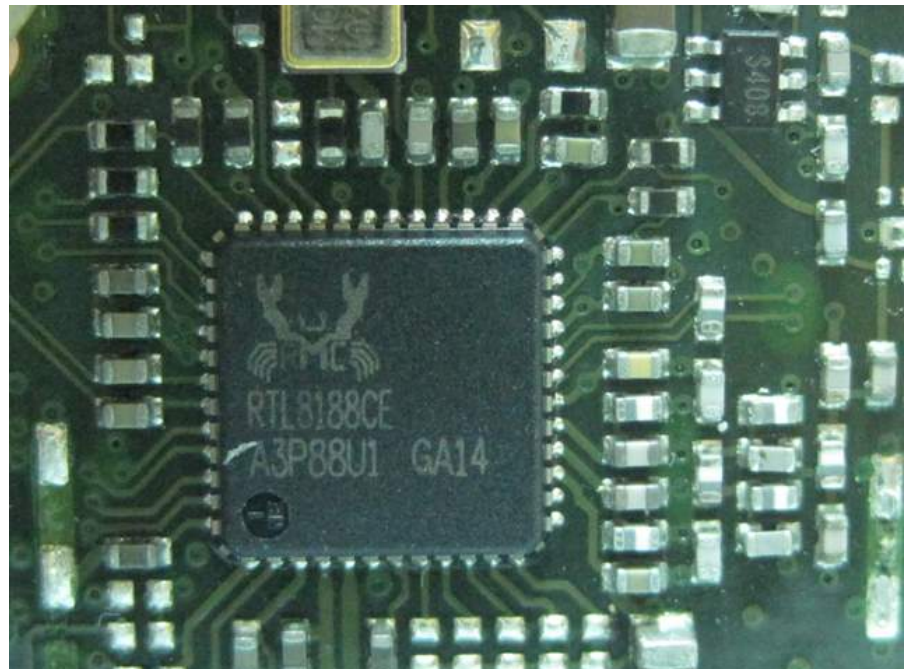
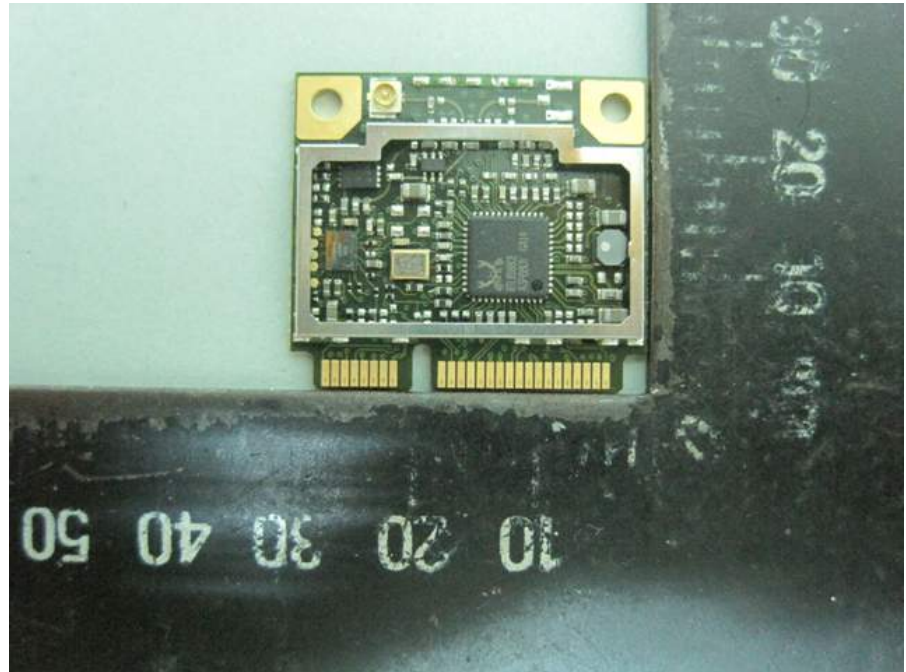
<Main Source>:

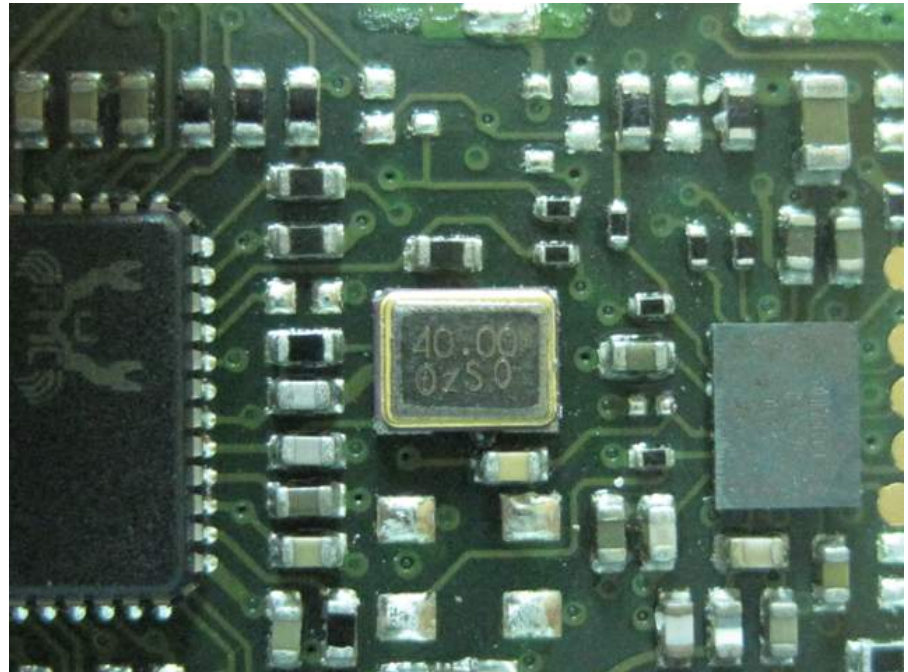
EUT Type 3:

Single Port Diversity

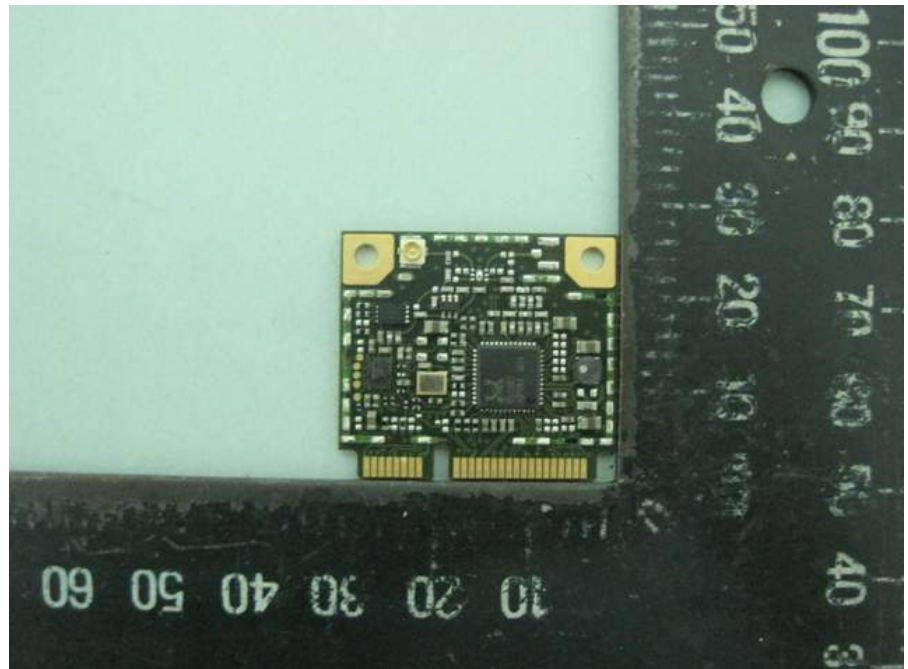
Transmitter

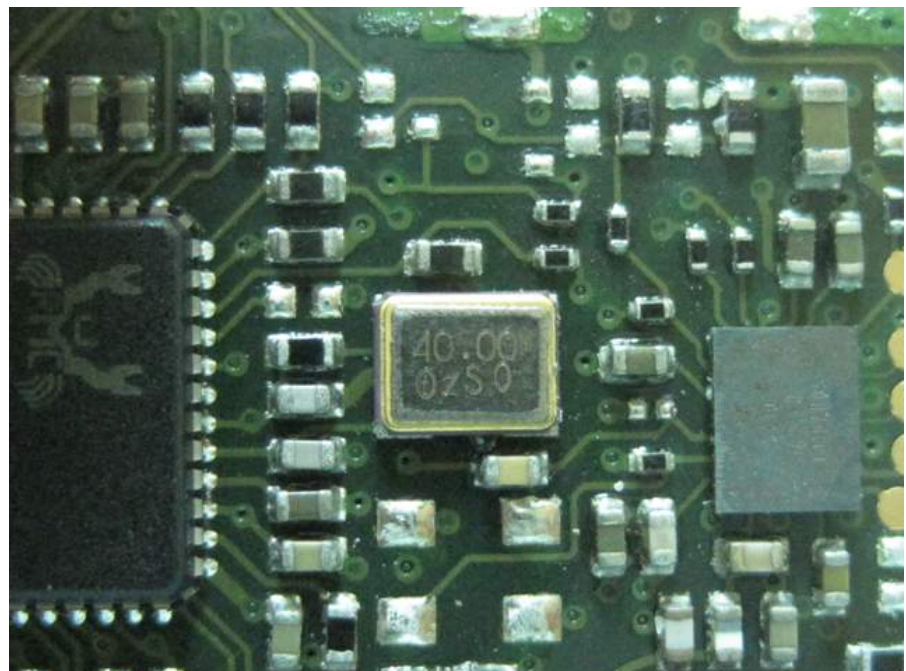
(with assembly by soldering
frame and cover)





<Main Source>:
EUT Type 3:
Single Port Diversity
Transmitter
(with one piece splicing by
soldering)

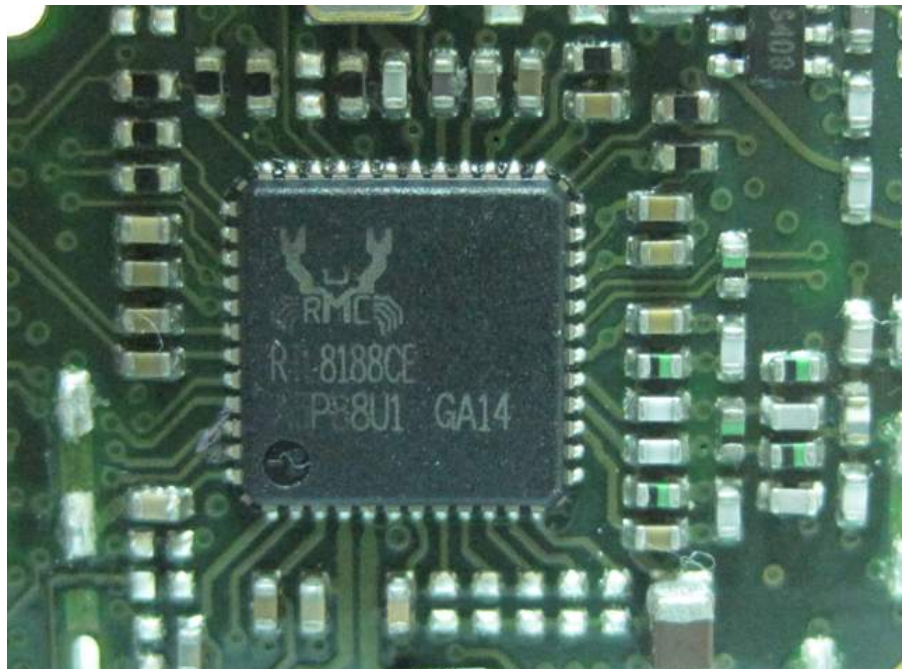
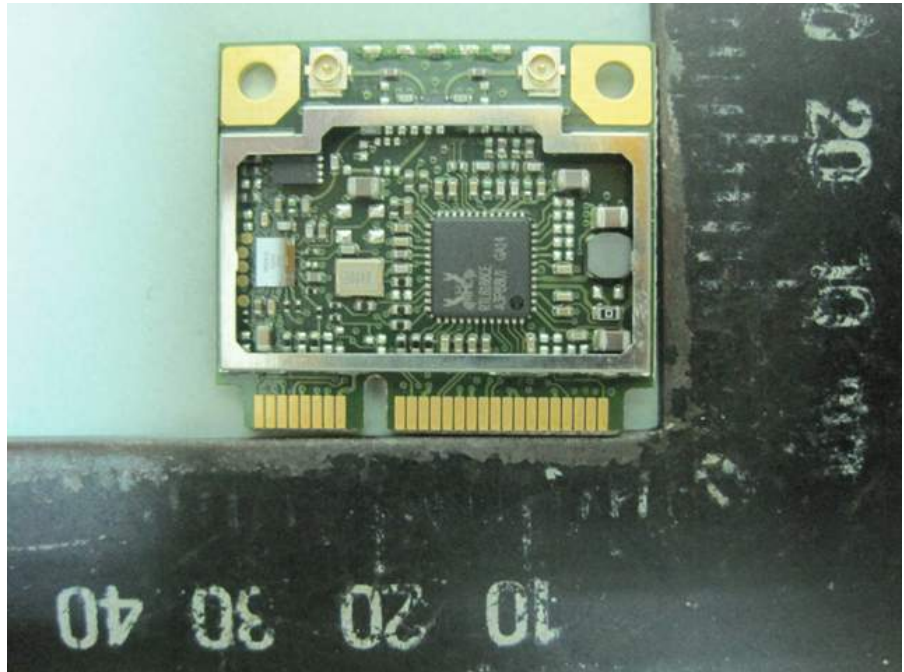


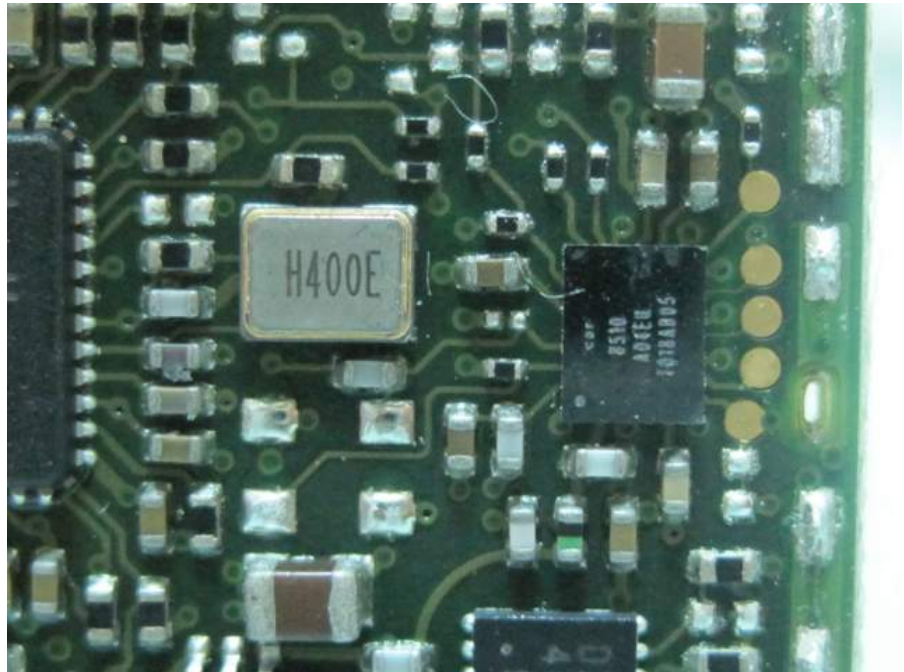


<Second Source>:

EUT Type 1:

Dual Port Diversity Transmitter
(with assembly by soldering
frame and cover)

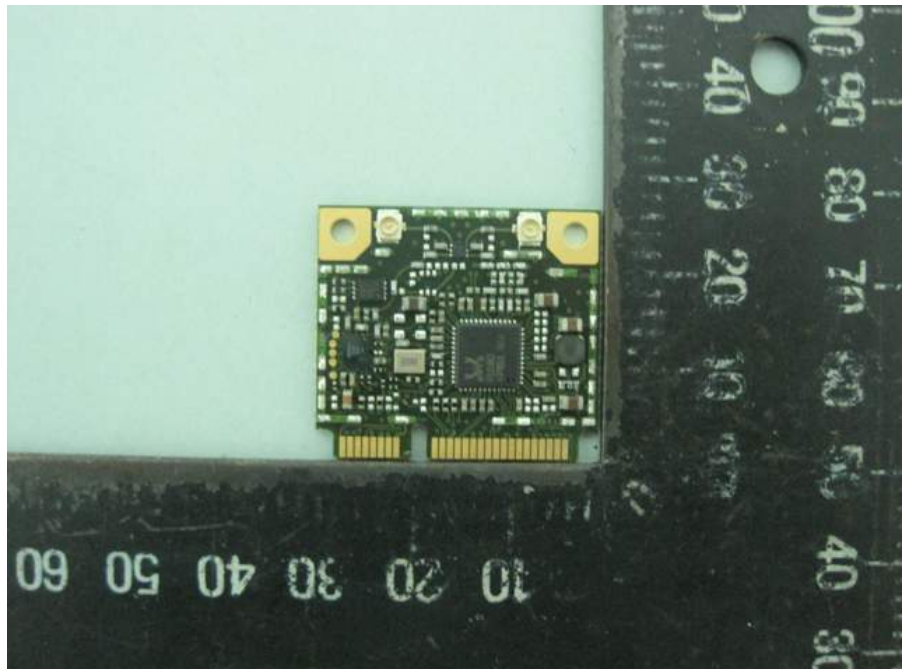


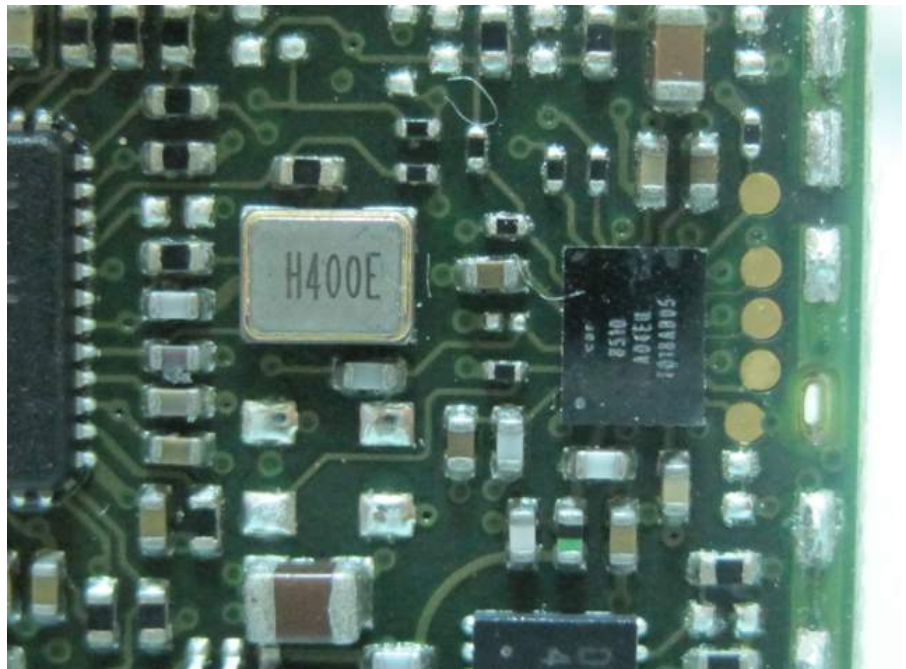


<Second Source>:

EUT Type 1:

Dual Port Diversity Transmitter
(with one piece splicing by
soldering)





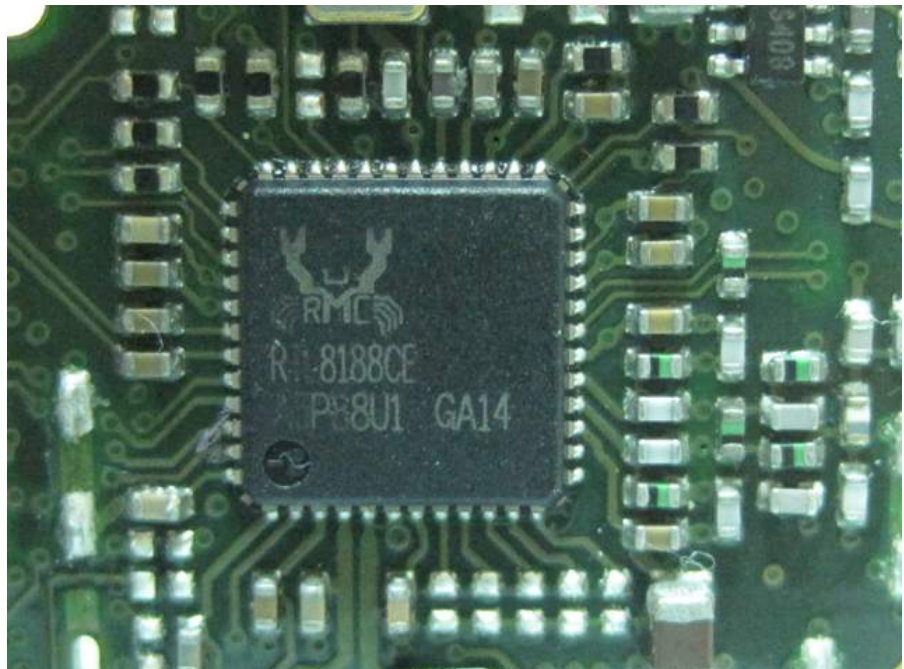
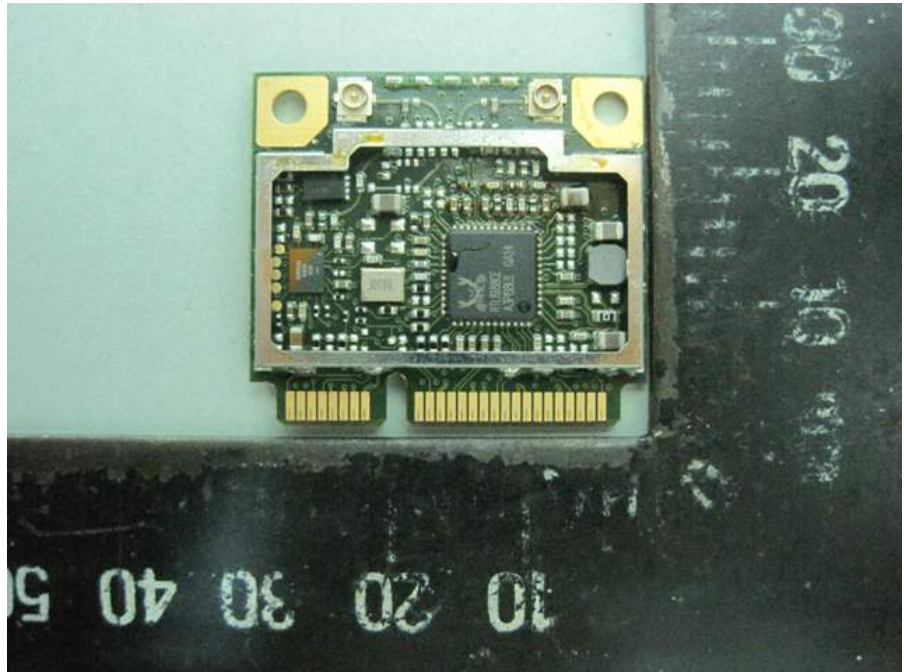
<Second Source> :

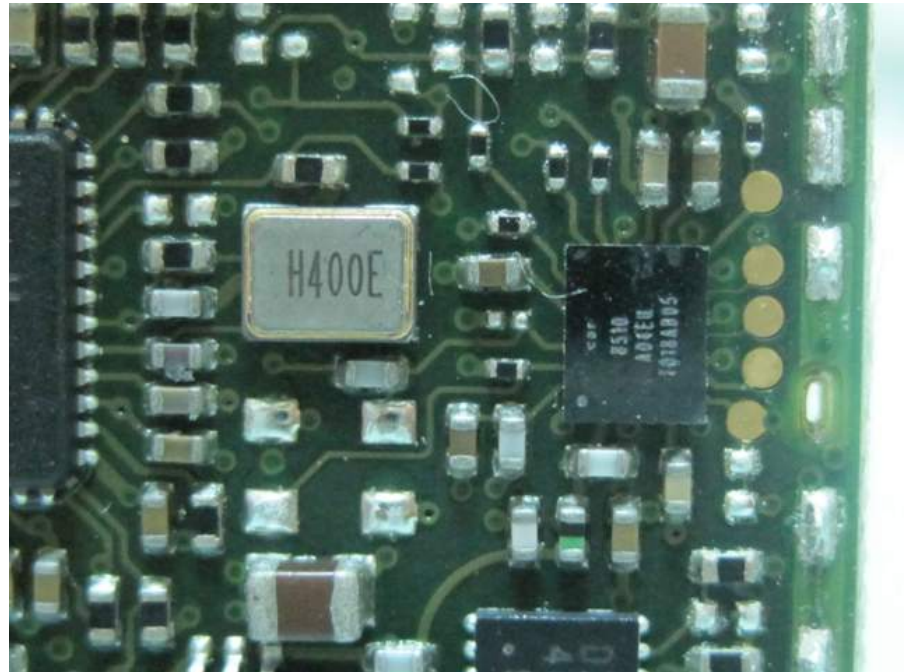
EUT Type 2:

Dual Port Fixed Path

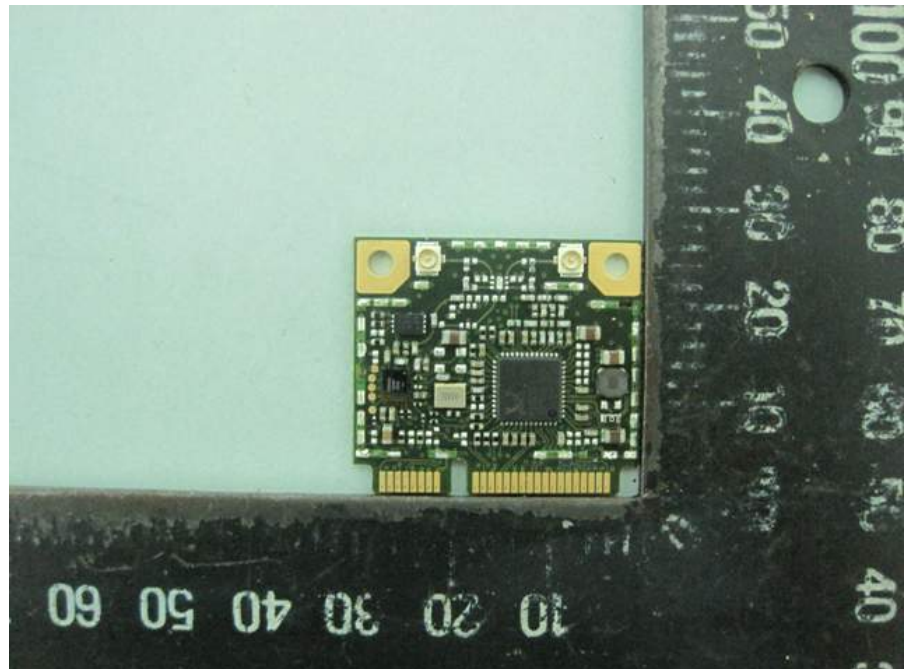
Transmitter-Fixed

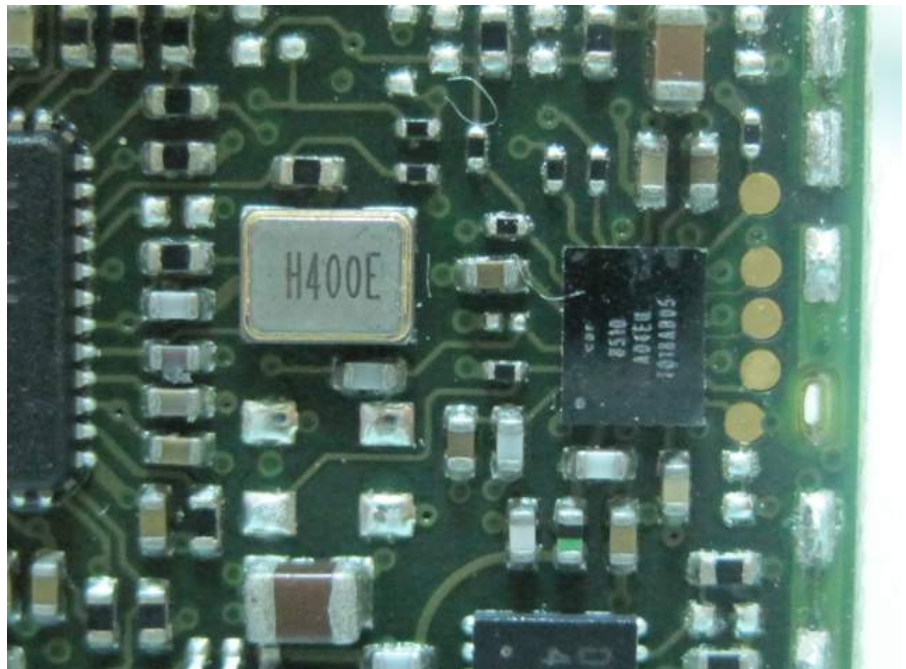
(with assembly by soldering
frame and cover)





<Second Source>:
EUT Type 2:
Dual Port Fixed Path
Transmitter-Fixed
(with one piece splicing by
soldering)





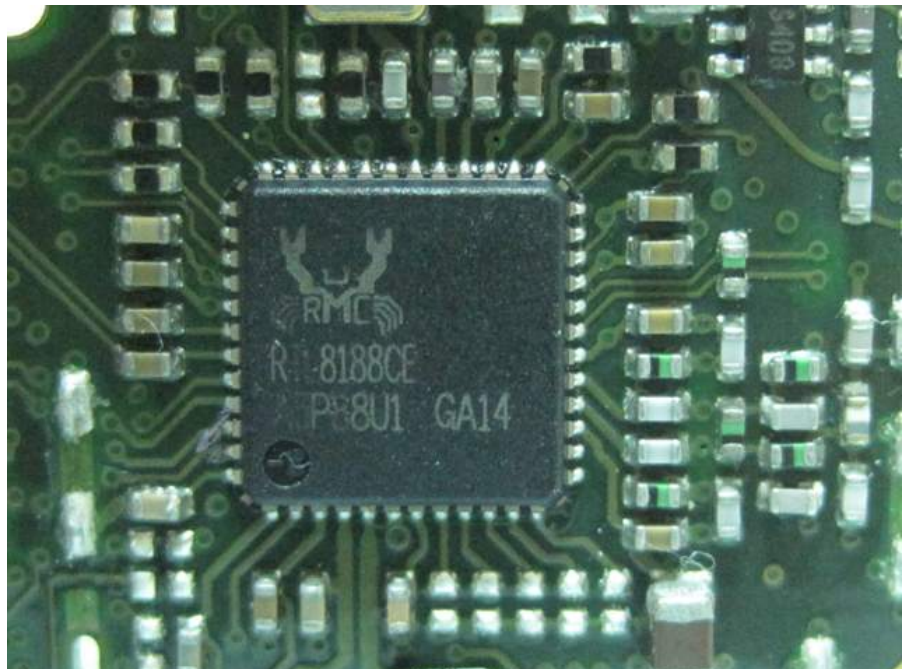
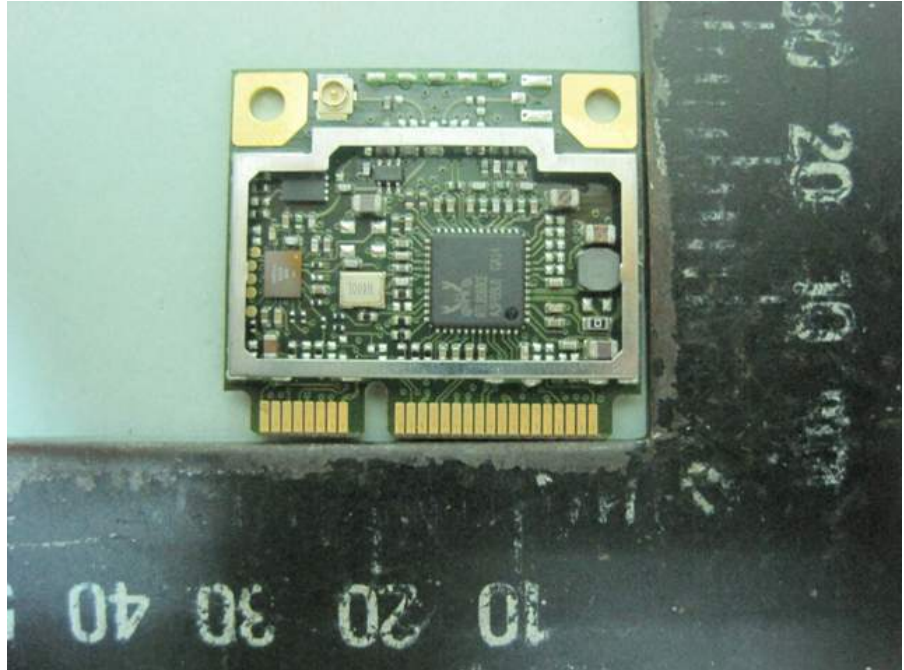
<Second Source> :

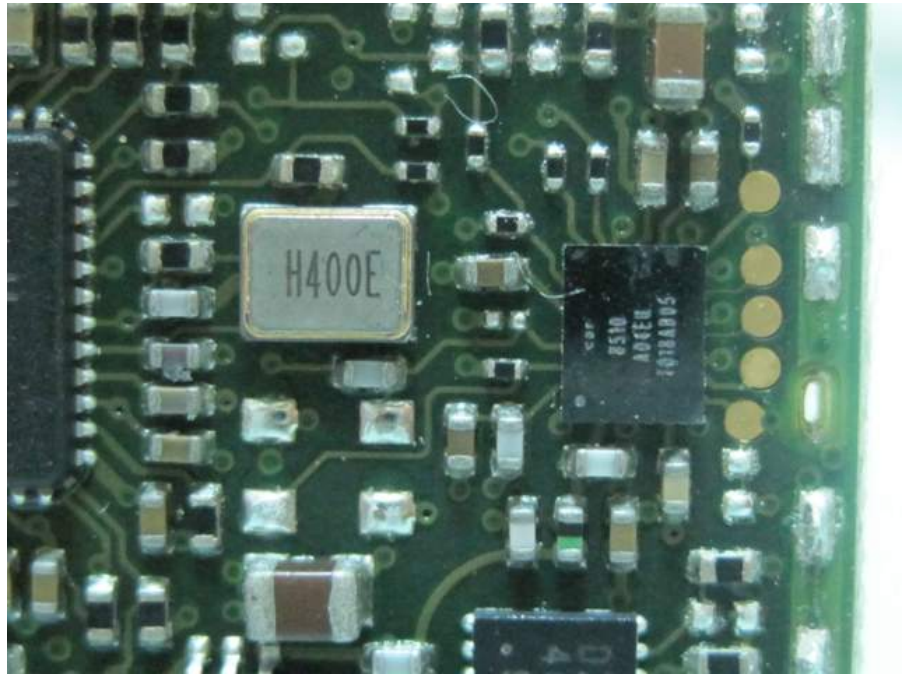
EUT Type 3:

Single Port Diversity

Transmitter

(with assembly by soldering
frame and cover)





<Second Source>:
EUT Type 3:
Single Port Diversity
Transmitter
(with one piece splicing by
soldering)

