

Plots of System Verification

Appendix A. Plots of System Verification

The plots for system verification are shown as follows.

Plots of System Verification

Measurement Report

S01 System Check_H2450_240503

Device under Test Properties

Model, Manufacturer	Dimensions [mm]	IMEI	DUT Type
Device,	n/a x n/a x n/a		Dipole

Exposure Conditions

Phantom Section, TSL	Position, Test Distance [mm]	Band	Group, UID	Frequency [MHz], Channel Number	Conversion Factor	TSL Conductivity [S/m]	TSL Permittivity
Flat,	,		CW, 0--	2450.0, 0	6.76	1.83	39.8

Hardware Setup

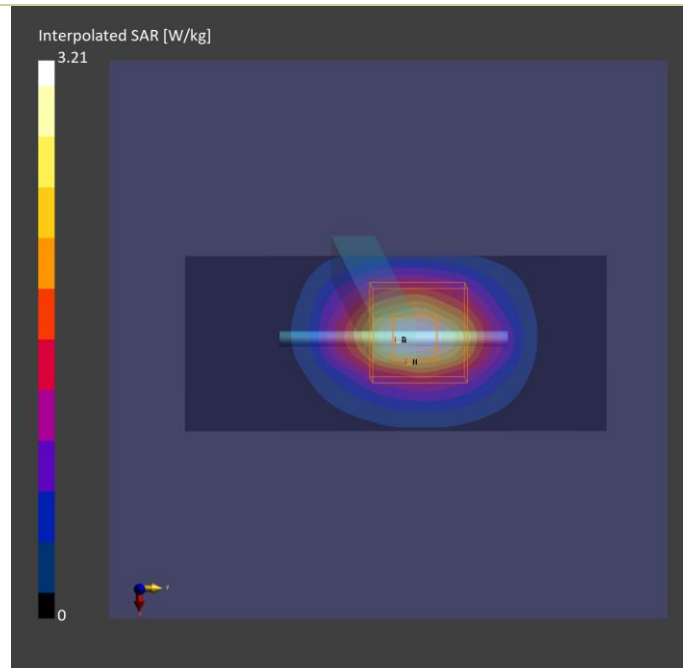
Phantom	TSL, Measured Date	Probe, Calibration Date	DAE, Calibration Date
ELI V8.0 (20deg probe tilt) - 2118	H06T27N5 , 2024-May-03	EX3DV4 - SN7797, 2024-01-08	DAE4 Sn1757, 2023-10-23

Scan Setup

	Area Scan	Zoom Scan
Grid Extents [mm]	48.0 x 96.0	35.0 x 35.0 x 30.0
Grid Steps [mm]	12.0 x 12.0	5.0 x 5.0 x 1.5
Sensor Surface [mm]	3.0	1.4

Measurement Results

	Area Scan	Zoom Scan
Date	2024-05-03	2024-05-03
psSAR1g [W/kg]	2.49	2.50
psSAR10g [W/kg]	1.17	1.20
Power Drift [dB]	-0.01	-0.01



Plots of System Verification

Measurement Report

S02 System Check_H5250_240503

Device under Test Properties

Model, Manufacturer	Dimensions [mm]	IMEI	DUT Type
Device,	N/A x N/A x N/A		Dipole

Exposure Conditions

Phantom Section, TSL	Position, Test Distance [mm]	Band	Group, UID	Frequency [MHz], Channel Number	Conversion Factor	TSL Conductivity [S/m]	TSL Permittivity
Flat,	,		CW, 0--	5250.000, 0	5.07	4.49	36.8

Hardware Setup

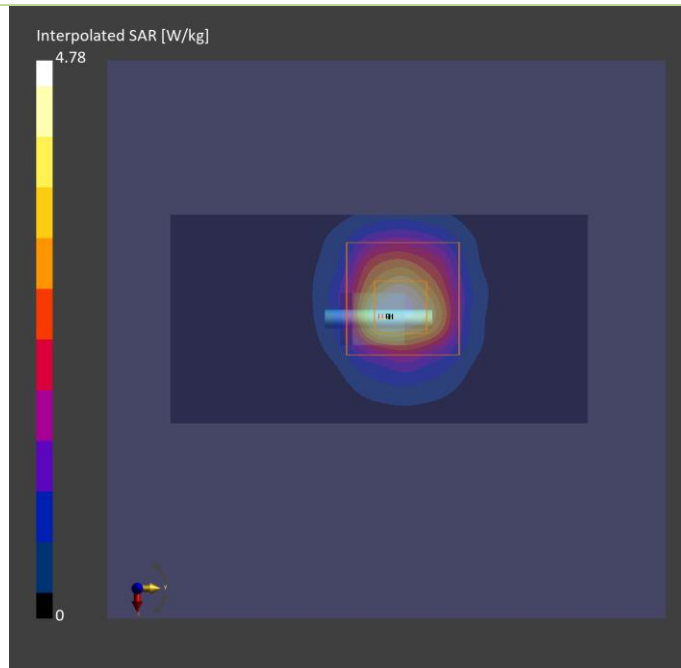
Phantom	TSL, Measured Date	Probe, Calibration Date	DAE, Calibration Date
ELI V8.0 (20deg probe tilt) - 2118	H51T72N5 , 2024-May-03	EX3DV4 - SN7797, 2024-01-08	DAE4 Sn1757, 2023-10-23

Scan Setup

	Area Scan	Zoom Scan
Grid Extents [mm]	40.0 x 80.0	24.0 x 24.0 x 22.0
Grid Steps [mm]	10.0 x 10.0	4.0 x 4.0 x 1.4
Sensor Surface [mm]	3.0	1.4

Measurement Results

	Area Scan	Zoom Scan
Date	2024-05-03	2024-05-03
psSAR1g [W/kg]	3.42	3.92
psSAR10g [W/kg]	1.07	1.13
Power Drift [dB]	-0.02	0.01



Plots of System Verification

Measurement Report

S03 System Check_H5600_240503

Device under Test Properties

Model, Manufacturer	Dimensions [mm]	IMEI	DUT Type
Device	N/A x N/A x N/A		Dipole

Exposure Conditions

Phantom Section, TSL	Position, Test Distance [mm]	Band	Group, UID	Frequency [MHz], Channel Number	Conversion Factor	TSL Conductivity [S/m]	TSL Permittivity
Flat,	,		CW, 0--	5600.000 0	4.41	4.88	36.4

Hardware Setup

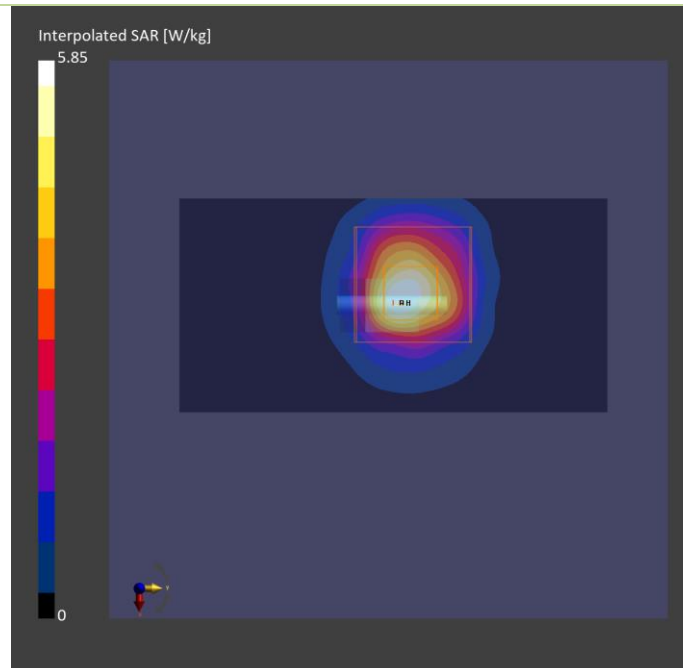
Phantom	TSL, Measured Date	Probe, Calibration Date	DAE, Calibration Date
ELI V8.0 (20deg probe tilt) - 2118	H51T72N5 , 2024-May-03	EX3DV4 - SN7797, 2024-01-08	DAE4 Sn1757, 2023-10-23

Scan Setup

	Area Scan	Zoom Scan
Grid Extents [mm]	40.0 x 80.0	24.0 x 24.0 x 22.0
Grid Steps [mm]	10.0 x 10.0	4.0 x 4.0 x 1.4
Sensor Surface [mm]	3.0	1.4

Measurement Results

	Area Scan	Zoom Scan
Date	2024-05-03	2024-05-03
psSAR1g [W/kg]	4.13	4.51
psSAR10g [W/kg]	1.27	1.27
Power Drift [dB]	-0.02	-0.02



Plots of System Verification

Measurement Report

S04 System Check_H5750_240503

Device under Test Properties

Model, Manufacturer	Dimensions [mm]	IMEI	DUT Type
Device	N/A x N/A x N/A		Dipole

Exposure Conditions

Phantom Section, TSL	Position, Test Distance [mm]	Band	Group, UID	Frequency [MHz], Channel Number	Conversion Factor	TSL Conductivity [S/m]	TSL Permittivity
Flat,	,		CW, 0--	5750.000 0	4.49	5.03	36.0

Hardware Setup

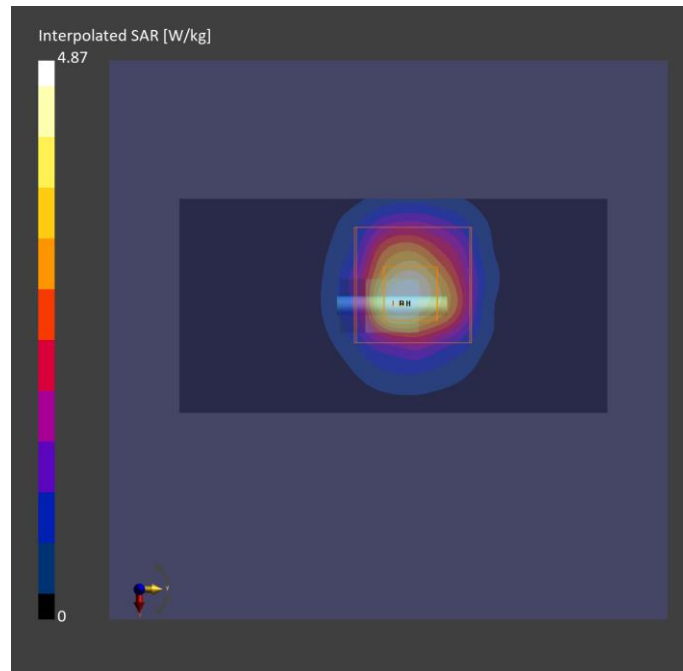
Phantom	TSL, Measured Date	Probe, Calibration Date	DAE, Calibration Date
ELI V8.0 (20deg probe tilt) - 2118	H51T72N5 , 2024-May-03	EX3DV4 - SN7797, 2024-01-08	DAE4 Sn1757, 2023-10-23

Scan Setup

	Area Scan	Zoom Scan
Grid Extents [mm]	40.0 x 80.0	24.0 x 24.0 x 22.0
Grid Steps [mm]	10.0 x 10.0	4.0 x 4.0 x 1.4
Sensor Surface [mm]	3.0	1.4

Measurement Results

	Area Scan	Zoom Scan
Date	2024-05-03	2024-05-03
psSAR1g [W/kg]	3.45	3.89
psSAR10g [W/kg]	1.07	1.11
Power Drift [dB]	-0.01	0.02



Plots of System Verification

Measurement Report

S05 System Check_H5800_240503

Device under Test Properties

Model, Manufacturer	Dimensions [mm]	IMEI	DUT Type
Device	10.0 x 10.0 x 300.0		Dipole

Exposure Conditions

Phantom Section, TSL	Position, Test Distance [mm]	Band	Group, UID	Frequency [MHz], Channel Number	Conversion Factor	TSL Conductivity [S/m]	TSL Permittivity
Flat,	,		CW,	5800.000, 0	4.88	5.10	34.4

Hardware Setup

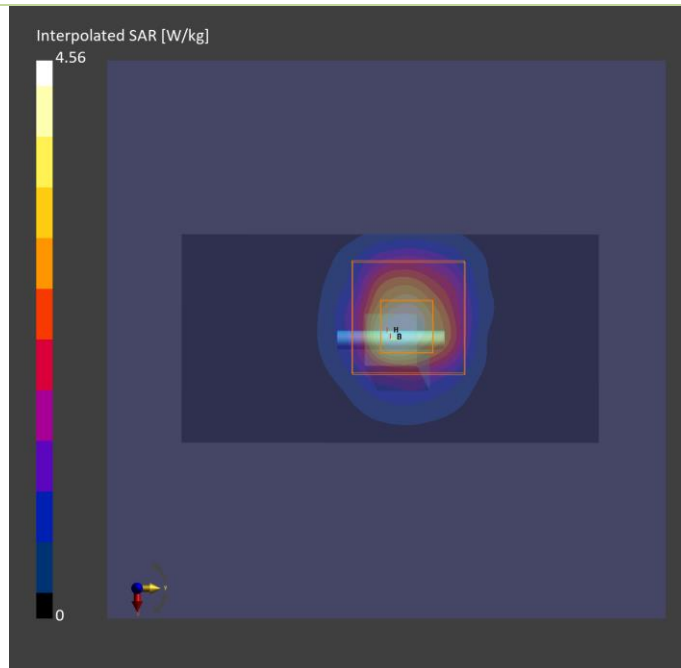
Phantom	TSL, Measured Date	Probe, Calibration Date	DAE, Calibration Date
ELI V8.0 (20deg probe tilt) - 2105	H51T72N6, 2024-May-03	EX3DV4 - SN7554, 2023-09-19	DAE4 Sn1431, 2023-08-24

Scan Setup

	Area Scan	Zoom Scan
Grid Extents [mm]	40.0 x 80.0	24.0 x 24.0 x 22.0
Grid Steps [mm]	10.0 x 10.0	4.0 x 4.0 x 1.4
Sensor Surface [mm]	3.0	1.4

Measurement Results

	Area Scan	Zoom Scan
Date	2024-05-03	2024-05-03
psSAR1g [W/kg]	3.24	3.76
psSAR10g [W/kg]	1.02	1.06
Power Drift [dB]	0.07	0.08



Plots of System Verification

Measurement Report

S06 System Check_H2450_240503

Device under Test Properties

Model, Manufacturer	Dimensions [mm]	IMEI	DUT Type
Device,	n/a x n/a x n/a		Dipole

Exposure Conditions

Phantom Section, TSL	Position, Test Distance [mm]	Band	Group, UID	Frequency [MHz], Channel Number	Conversion Factor	TSL Conductivity [S/m]	TSL Permittivity
Flat,	,		CW, 0--	2450.0, 0	6.76	1.83	39.8

Hardware Setup

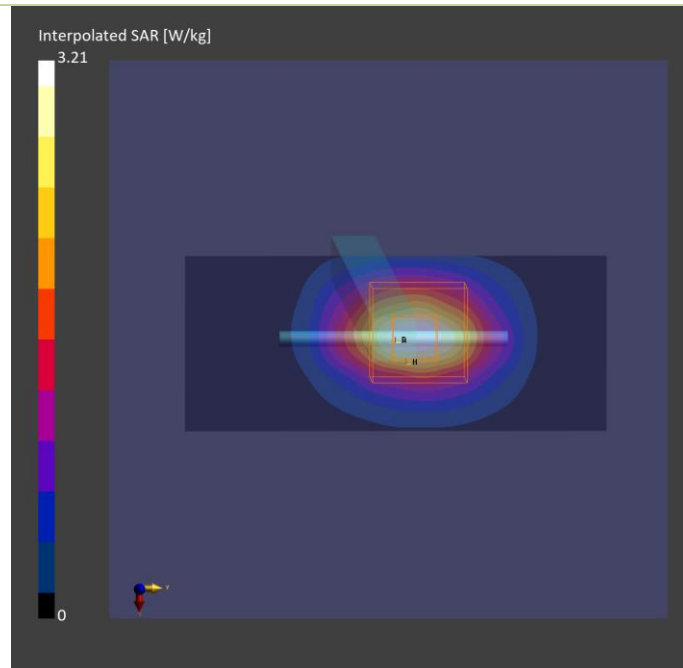
Phantom	TSL, Measured Date	Probe, Calibration Date	DAE, Calibration Date
ELI V8.0 (20deg probe tilt) - 2118	H06T27N5 , 2024-May-03	EX3DV4 - SN7797, 2024-01-08	DAE4 Sn1757, 2023-10-23

Scan Setup

	Area Scan	Zoom Scan
Grid Extents [mm]	48.0 x 96.0	35.0 x 35.0 x 30.0
Grid Steps [mm]	12.0 x 12.0	5.0 x 5.0 x 1.5
Sensor Surface [mm]	3.0	1.4

Measurement Results

	Area Scan	Zoom Scan
Date	2024-05-03	2024-05-03
psSAR1g [W/kg]	2.49	2.50
psSAR10g [W/kg]	1.17	1.20
Power Drift [dB]	-0.01	-0.01



Plots of System Verification

Measurement Report

S07 System Check_H2450_240503

Device under Test Properties

Model, Manufacturer	Dimensions [mm]	IMEI	DUT Type
Device,	n/a x n/a x n/a		Dipole

Exposure Conditions

Phantom Section, TSL	Position, Test Distance [mm]	Band	Group, UID	Frequency [MHz], Channel Number	Conversion Factor	TSL Conductivity [S/m]	TSL Permittivity
Flat,	,		CW, 0--	2450.0, 0	6.76	1.83	39.8

Hardware Setup

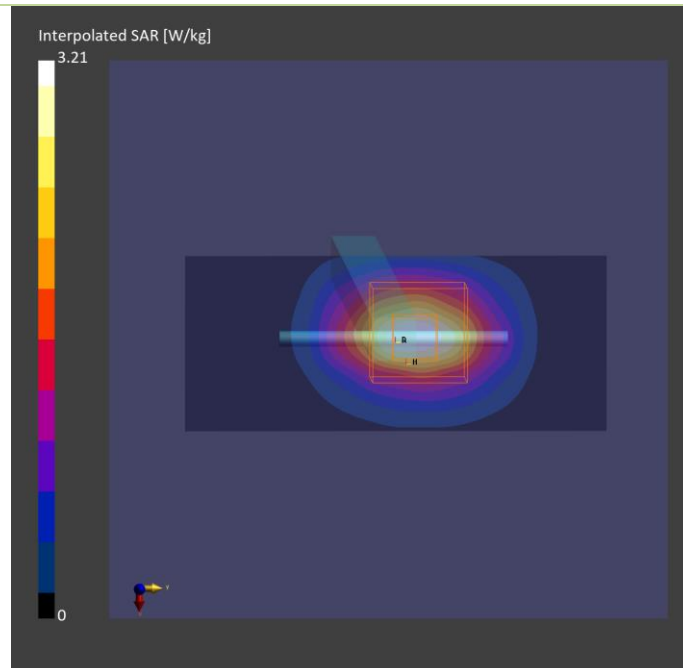
Phantom	TSL, Measured Date	Probe, Calibration Date	DAE, Calibration Date
ELI V8.0 (20deg probe tilt) - 2118	H06T27N5 , 2024-May-03	EX3DV4 - SN7797, 2024-01-08	DAE4 Sn1757, 2023-10-23

Scan Setup

	Area Scan	Zoom Scan
Grid Extents [mm]	48.0 x 96.0	35.0 x 35.0 x 30.0
Grid Steps [mm]	12.0 x 12.0	5.0 x 5.0 x 1.5
Sensor Surface [mm]	3.0	1.4

Measurement Results

	Area Scan	Zoom Scan
Date	2024-05-03	2024-05-03
psSAR1g [W/kg]	2.49	2.50
psSAR10g [W/kg]	1.17	1.20
Power Drift [dB]	-0.01	-0.01



Plots of System Verification

Measurement Report

S08 System Check_H2450_240503

Device under Test Properties

Model, Manufacturer	Dimensions [mm]	IMEI	DUT Type
Device,	n/a x n/a x n/a		Dipole

Exposure Conditions

Phantom Section, TSL	Position, Test Distance [mm]	Band	Group, UID	Frequency [MHz], Channel Number	Conversion Factor	TSL Conductivity [S/m]	TSL Permittivity
Flat,	,		CW, 0--	2450.0, 0	6.76	1.83	39.8

Hardware Setup

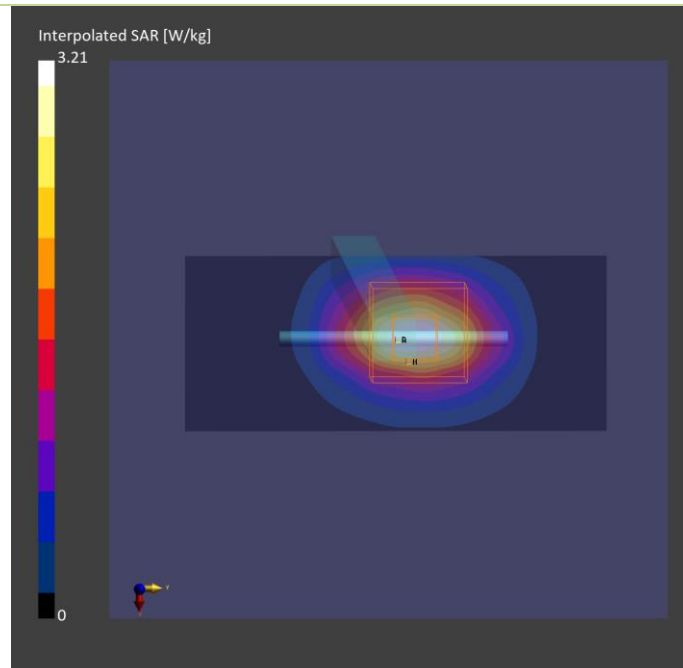
Phantom	TSL, Measured Date	Probe, Calibration Date	DAE, Calibration Date
ELI V8.0 (20deg probe tilt) - 2118	H06T27N5 , 2024-May-03	EX3DV4 - SN7797, 2024-01-08	DAE4 Sn1757, 2023-10-23

Scan Setup

	Area Scan	Zoom Scan
Grid Extents [mm]	48.0 x 96.0	35.0 x 35.0 x 30.0
Grid Steps [mm]	12.0 x 12.0	5.0 x 5.0 x 1.5
Sensor Surface [mm]	3.0	1.4

Measurement Results

	Area Scan	Zoom Scan
Date	2024-05-03	2024-05-03
psSAR1g [W/kg]	2.49	2.50
psSAR10g [W/kg]	1.17	1.20
Power Drift [dB]	-0.01	-0.01



Plots of System Verification

Measurement Report

S09 System Check_H5250_240503

Device under Test Properties

Model, Manufacturer	Dimensions [mm]	IMEI	DUT Type
Device,	N/A x N/A x N/A		Dipole

Exposure Conditions

Phantom Section, TSL	Position, Test Distance [mm]	Band	Group, UID	Frequency [MHz], Channel Number	Conversion Factor	TSL Conductivity [S/m]	TSL Permittivity
Flat,	,		CW, 0--	5250.000, 0	5.07	4.49	36.8

Hardware Setup

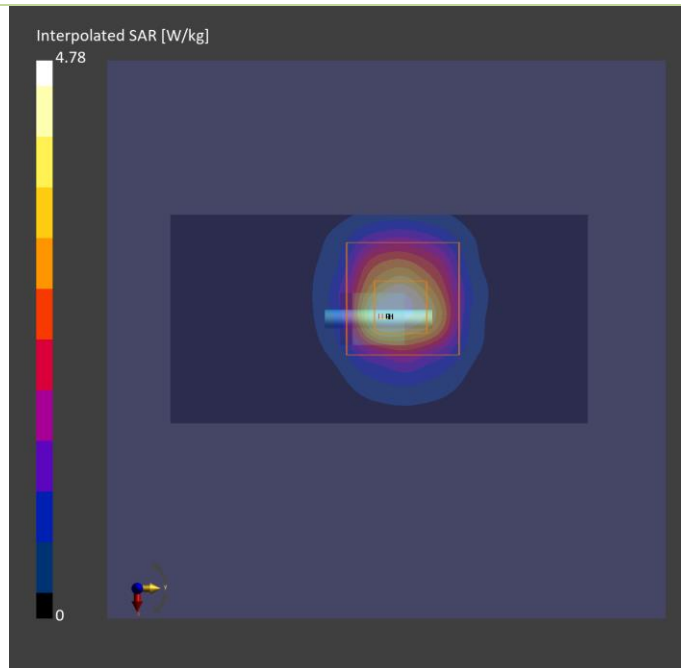
Phantom	TSL, Measured Date	Probe, Calibration Date	DAE, Calibration Date
ELI V8.0 (20deg probe tilt) - 2118	H51T72N5 , 2024-May-03	EX3DV4 - SN7797, 2024-01-08	DAE4 Sn1757, 2023-10-23

Scan Setup

	Area Scan	Zoom Scan
Grid Extents [mm]	40.0 x 80.0	24.0 x 24.0 x 22.0
Grid Steps [mm]	10.0 x 10.0	4.0 x 4.0 x 1.4
Sensor Surface [mm]	3.0	1.4

Measurement Results

	Area Scan	Zoom Scan
Date	2024-05-03	2024-05-03
psSAR1g [W/kg]	3.42	3.92
psSAR10g [W/kg]	1.07	1.13
Power Drift [dB]	-0.02	0.01



Plots of System Verification

Measurement Report

S10 System Check_H5600_240503

Device under Test Properties

Model, Manufacturer	Dimensions [mm]	IMEI	DUT Type
Device	N/A x N/A x N/A		Dipole

Exposure Conditions

Phantom Section, TSL	Position, Test Distance [mm]	Band	Group, UID	Frequency [MHz], Channel Number	Conversion Factor	TSL Conductivity [S/m]	TSL Permittivity
Flat,	,		CW, 0--	5600.000 0	4.41	4.88	36.4

Hardware Setup

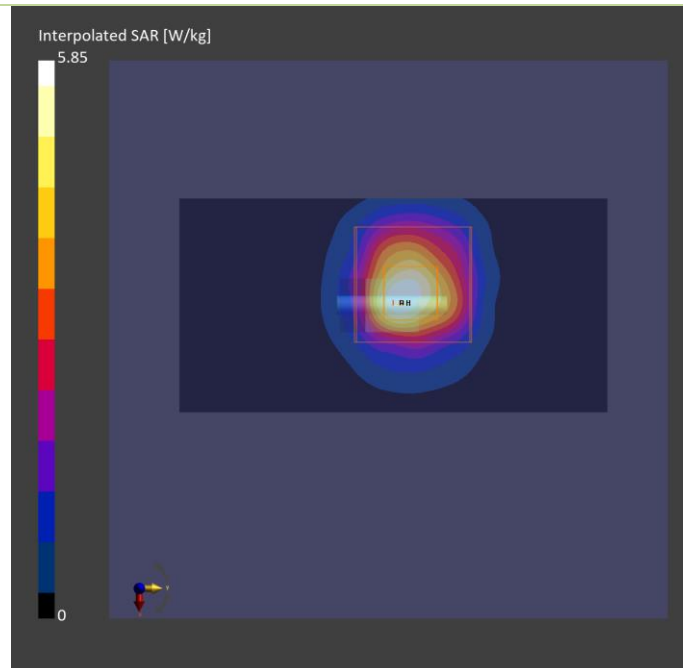
Phantom	TSL, Measured Date	Probe, Calibration Date	DAE, Calibration Date
ELI V8.0 (20deg probe tilt) - 2118	H51T72N5 , 2024-May-03	EX3DV4 - SN7797, 2024-01-08	DAE4 Sn1757, 2023-10-23

Scan Setup

	Area Scan	Zoom Scan
Grid Extents [mm]	40.0 x 80.0	24.0 x 24.0 x 22.0
Grid Steps [mm]	10.0 x 10.0	4.0 x 4.0 x 1.4
Sensor Surface [mm]	3.0	1.4

Measurement Results

	Area Scan	Zoom Scan
Date	2024-05-03	2024-05-03
psSAR1g [W/kg]	4.13	4.51
psSAR10g [W/kg]	1.27	1.27
Power Drift [dB]	-0.02	-0.02



Plots of System Verification

Measurement Report

S11 System Check_H5750_240503

Device under Test Properties

Model, Manufacturer	Dimensions [mm]	IMEI	DUT Type
Device	N/A x N/A x N/A		Dipole

Exposure Conditions

Phantom Section, TSL	Position, Test Distance [mm]	Band	Group, UID	Frequency [MHz], Channel Number	Conversion Factor	TSL Conductivity [S/m]	TSL Permittivity
Flat,	,		CW, 0--	5750.000 0	4.49	5.03	36.0

Hardware Setup

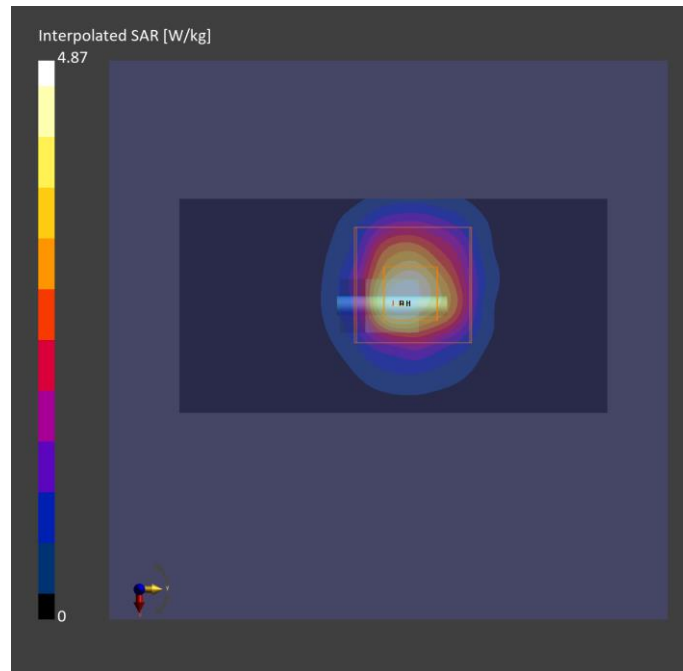
Phantom	TSL, Measured Date	Probe, Calibration Date	DAE, Calibration Date
ELI V8.0 (20deg probe tilt) - 2118	H51T72N5 , 2024-May-03	EX3DV4 - SN7797, 2024-01-08	DAE4 Sn1757, 2023-10-23

Scan Setup

	Area Scan	Zoom Scan
Grid Extents [mm]	40.0 x 80.0	24.0 x 24.0 x 22.0
Grid Steps [mm]	10.0 x 10.0	4.0 x 4.0 x 1.4
Sensor Surface [mm]	3.0	1.4

Measurement Results

	Area Scan	Zoom Scan
Date	2024-05-03	2024-05-03
psSAR1g [W/kg]	3.45	3.89
psSAR10g [W/kg]	1.07	1.11
Power Drift [dB]	-0.01	0.02



Plots of System Verification

Measurement Report

S12 System Check_H5800_240503

Device under Test Properties

Model, Manufacturer	Dimensions [mm]	IMEI	DUT Type
Device	10.0 x 10.0 x 300.0		Dipole

Exposure Conditions

Phantom Section, TSL	Position, Test Distance [mm]	Band	Group, UID	Frequency [MHz], Channel Number	Conversion Factor	TSL Conductivity [S/m]	TSL Permittivity
Flat,	,		CW,	5800.000, 0	4.88	5.10	34.4

Hardware Setup

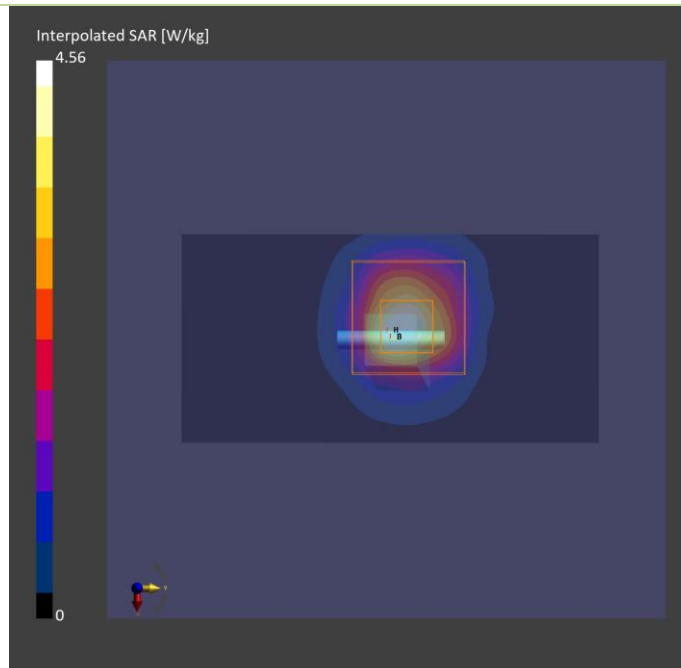
Phantom	TSL, Measured Date	Probe, Calibration Date	DAE, Calibration Date
ELI V8.0 (20deg probe tilt) - 2105	H51T72N6, 2024-May-03	EX3DV4 - SN7554, 2023-09-19	DAE4 Sn1431, 2023-08-24

Scan Setup

	Area Scan	Zoom Scan
Grid Extents [mm]	40.0 x 80.0	24.0 x 24.0 x 22.0
Grid Steps [mm]	10.0 x 10.0	4.0 x 4.0 x 1.4
Sensor Surface [mm]	3.0	1.4

Measurement Results

	Area Scan	Zoom Scan
Date	2024-05-03	2024-05-03
psSAR1g [W/kg]	3.24	3.76
psSAR10g [W/kg]	1.02	1.06
Power Drift [dB]	0.07	0.08



Plots of System Verification

Measurement Report S13 System Check_H2450_240503

Device under Test Properties

Model, Manufacturer	Dimensions [mm]	IMEI	DUT Type
Device,	n/a x n/a x n/a		Dipole

Exposure Conditions

Phantom Section, TSL	Position, Test Distance [mm]	Band	Group, UID	Frequency [MHz], Channel Number	Conversion Factor	TSL Conductivity [S/m]	TSL Permittivity
Flat,	,		CW, 0--	2450.0, 0	6.76	1.83	39.8

Hardware Setup

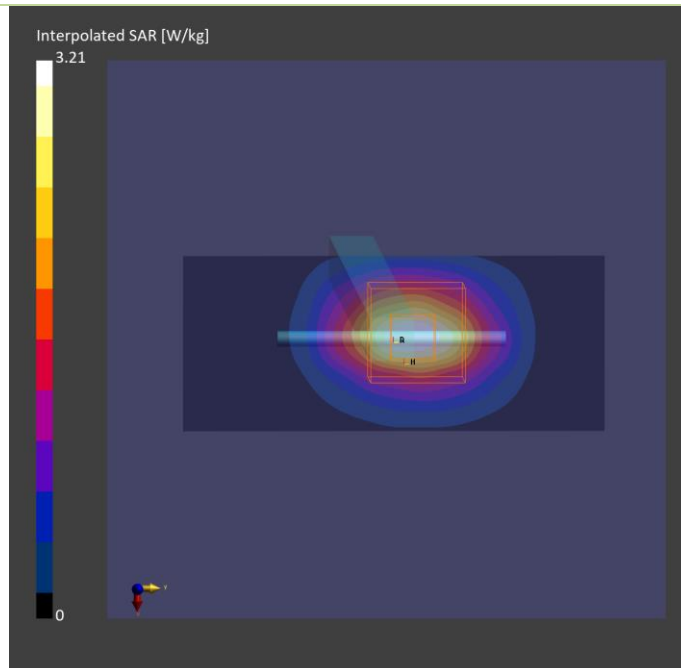
Phantom	TSL, Measured Date	Probe, Calibration Date	DAE, Calibration Date
ELI V8.0 (20deg probe tilt) - 2118	H06T27N5 , 2024-May-03	EX3DV4 - SN7797, 2024-01-08	DAE4 Sn1757, 2023-10-23

Scan Setup

	Area Scan	Zoom Scan
Grid Extents [mm]	48.0 x 96.0	35.0 x 35.0 x 30.0
Grid Steps [mm]	12.0 x 12.0	5.0 x 5.0 x 1.5
Sensor Surface [mm]	3.0	1.4

Measurement Results

	Area Scan	Zoom Scan
Date	2024-05-03	2024-05-03
psSAR1g [W/kg]	2.49	2.50
psSAR10g [W/kg]	1.17	1.20
Power Drift [dB]	-0.01	-0.01



Plots of System Verification

Measurement Report

S14 System Check_H2450_240503

Device under Test Properties

Model, Manufacturer	Dimensions [mm]	IMEI	DUT Type
Device,	n/a x n/a x n/a		Dipole

Exposure Conditions

Phantom Section, TSL	Position, Test Distance [mm]	Band	Group, UID	Frequency [MHz], Channel Number	Conversion Factor	TSL Conductivity [S/m]	TSL Permittivity
Flat,	,		CW, 0--	2450.0, 0	6.76	1.83	39.8

Hardware Setup

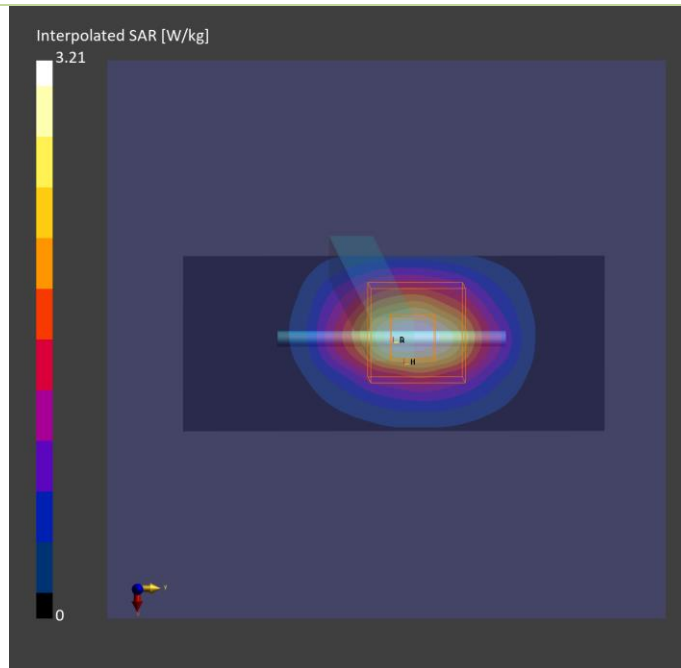
Phantom	TSL, Measured Date	Probe, Calibration Date	DAE, Calibration Date
ELI V8.0 (20deg probe tilt) - 2118	H06T27N5 , 2024-May-03	EX3DV4 - SN7797, 2024-01-08	DAE4 Sn1757, 2023-10-23

Scan Setup

	Area Scan	Zoom Scan
Grid Extents [mm]	48.0 x 96.0	35.0 x 35.0 x 30.0
Grid Steps [mm]	12.0 x 12.0	5.0 x 5.0 x 1.5
Sensor Surface [mm]	3.0	1.4

Measurement Results

	Area Scan	Zoom Scan
Date	2024-05-03	2024-05-03
psSAR1g [W/kg]	2.49	2.50
psSAR10g [W/kg]	1.17	1.20
Power Drift [dB]	-0.01	-0.01



Appendix B. Plots of Measurement

The SAR plots for highest measured SAR in each exposure configuration, wireless mode and frequency band combination are shown as follows.

Plots of Measurement

Measurement Report

P01 WLAN2.4G_802.11b_Bottom Side_5mm_Ch1_SKU2_Ant 1_PIFA

Device under Test Properties

Model, Manufacturer	Dimensions [mm]	IMEI	DUT Type
BBUI-WTW-P24020119,	235.0 x 75.0 x 50.0		Module

Exposure Conditions

Phantom Section, TSL	Position, Test Distance [mm]	Band	Group, UID	Frequency [MHz], Channel Number	Conversion Factor	TSL Conductivity [S/m]	TSL Permittivity
Flat,	Bottom Side, 5.00	WLAN 2.4GHz	WLAN, 10012-CAB	2412.0, 1	6.76	1.80	40.0

Hardware Setup

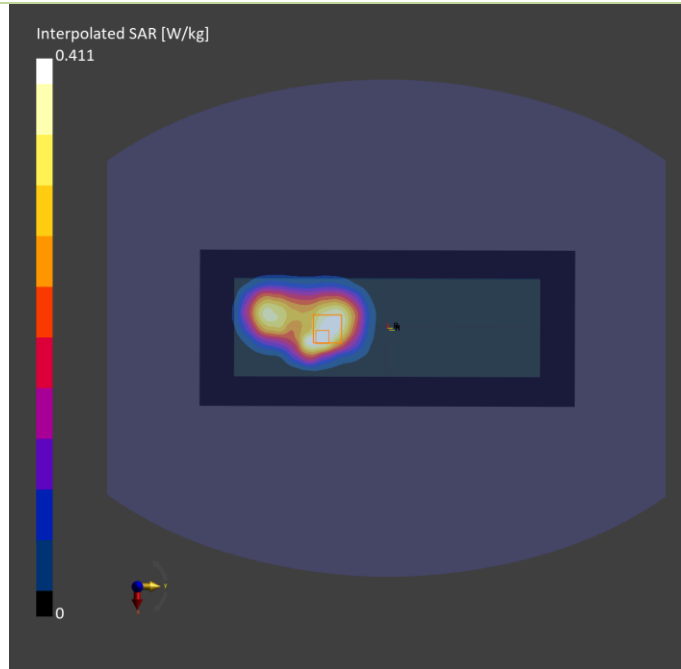
Phantom	TSL, Measured Date	Probe, Calibration Date	DAE, Calibration Date
ELI V8.0 (20deg probe tilt) - 2118	H06T27N5 , 2024-May-03	EX3DV4 - SN7797, 2024-01-08	DAE4 Sn1757, 2023-10-23

Scan Setup

	Area Scan	Zoom Scan
Grid Extents [mm]	120.0 x 288.0	30.0 x 30.0 x 30.0
Grid Steps [mm]	12.0 x 12.0	5.0 x 5.0 x 5.0
Sensor Surface [mm]	3.0	1.4

Measurement Results

	Area Scan	Zoom Scan
Date	2024-05-03	2024-05-03
psSAR1g [W/kg]	0.334	0.344
psSAR10g [W/kg]	0.194	0.193
Power Drift [dB]	-0.02	0.01
M2/M1 [%]		45.9
Dist 3dB Peak [mm]		9.0



Plots of Measurement

Measurement Report

P02 WLAN5.3G_802.11ac VHT80_Bottom Side_5mm_Ch58_SKU2_Ant 0+1_PIFA

Device under Test Properties

Model, Manufacturer	Dimensions [mm]	IMEI	DUT Type
BBUI-WTW-P24020119,	235.0 x 75.0 x 50.0		Module

Exposure Conditions

Phantom Section, TSL	Position, Test Distance [mm]	Band	Group, UID	Frequency [MHz], Channel Number	Conversion Factor	TSL Conductivity [S/m]	TSL Permittivity
Flat,	Bottom Side, 5.00	WLAN 5GHz	WLAN, 10544-AAC	5290.0, 58	5.07	4.55	36.6

Hardware Setup

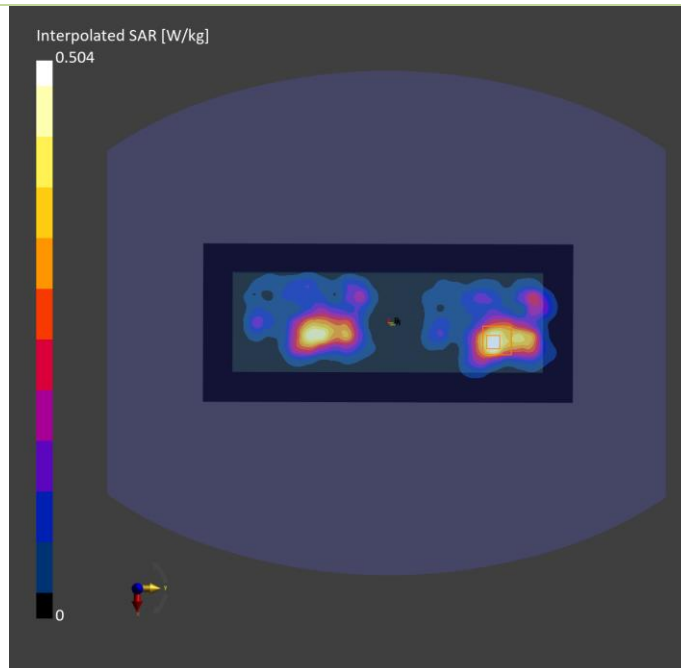
Phantom	TSL, Measured Date	Probe, Calibration Date	DAE, Calibration Date
ELI V8.0 (20deg probe tilt) - 2118	H51T72N5 , 2024-May-03	EX3DV4 - SN7797, 2024-01-08	DAE4 Sn1757, 2023-10-23

Scan Setup

	Area Scan	Zoom Scan
Grid Extents [mm]	120.0 x 280.0	24.0 x 24.0 x 22.0
Grid Steps [mm]	10.0 x 10.0	4.0 x 4.0 x 1.4
Sensor Surface [mm]	3.0	1.4

Measurement Results

	Area Scan	Zoom Scan
Date	2024-05-03	2024-05-03
psSAR1g [W/kg]	0.373	0.404
psSAR10g [W/kg]	0.147	0.156
Power Drift [dB]	0.05	0.05
M2/M1 [%]		63.3
Dist 3dB Peak [mm]		9.4



Plots of Measurement

Measurement Report

P03 WLAN5.6G_802.11ac VHT80_Bottom Side_5mm_Ch138_SKU2_Ant 0+1_PIFA

Device under Test Properties

Model, Manufacturer	Dimensions [mm]	IMEI	DUT Type
BBUI-WTW-P24020119,	235.0 x 75.0 x 50.0		Module

Exposure Conditions

Phantom Section, TSL	Position, Test Distance [mm]	Band	Group, UID	Frequency [MHz], Channel Number	Conversion Factor	TSL Conductivity [S/m]	TSL Permittivity
Flat,	Bottom Side, 5.00	WLAN 5GHz	WLAN, 10544-AAC	5690.0, 138	4.49	5.07	36.1

Hardware Setup

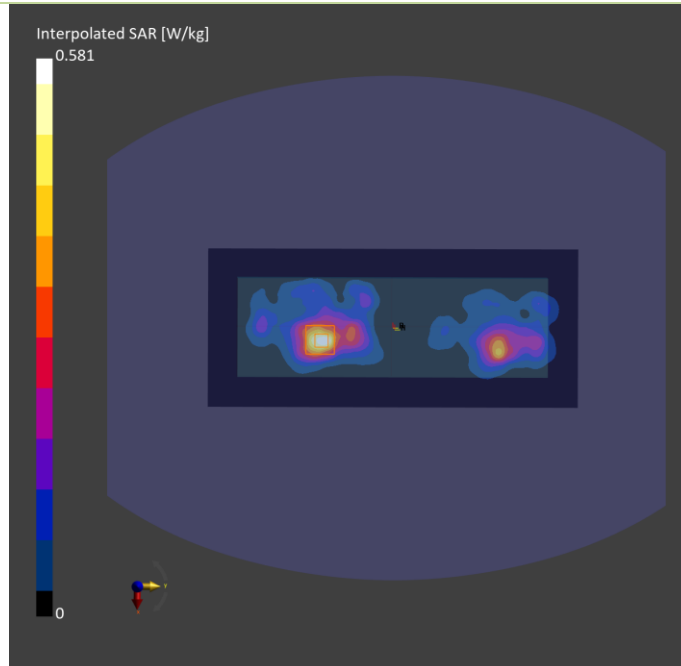
Phantom	TSL, Measured Date	Probe, Calibration Date	DAE, Calibration Date
ELI V8.0 (20deg probe tilt) - 2118	H51T72N5 , 2024-May-03	EX3DV4 - SN7797, 2024-01-08	DAE4 Sn1757, 2023-10-23

Scan Setup

	Area Scan	Zoom Scan
Grid Extents [mm]	120.0 x 280.0	24.0 x 24.0 x 22.0
Grid Steps [mm]	10.0 x 10.0	4.0 x 4.0 x 1.4
Sensor Surface [mm]	3.0	1.4

Measurement Results

	Area Scan	Zoom Scan
Date	2024-05-03	2024-05-03
psSAR1g [W/kg]	0.422	0.448
psSAR10g [W/kg]	0.159	0.169
Power Drift [dB]	-0.04	0.05
M2/M1 [%]		60.3
Dist 3dB Peak [mm]		8.4



Plots of Measurement

Measurement Report

P04 WLAN5.8G_802.11ac VHT80_Bottom Side_5mm_Ch155_SKU2_Ant 0+1_PIFA

Device under Test Properties

Model, Manufacturer	Dimensions [mm]	IMEI	DUT Type
BBUI-WTW-P24020119,	235.0 x 75.0 x 50.0		Module

Exposure Conditions

Phantom Section, TSL	Position, Test Distance [mm]	Band	Group, UID	Frequency [MHz], Channel Number	Conversion Factor	TSL Conductivity [S/m]	TSL Permittivity
Flat,	Bottom Side, 5.00	WLAN 5GHz	WLAN, 10544-AAC	5775.0, 155	4.49	5.07	35.8

Hardware Setup

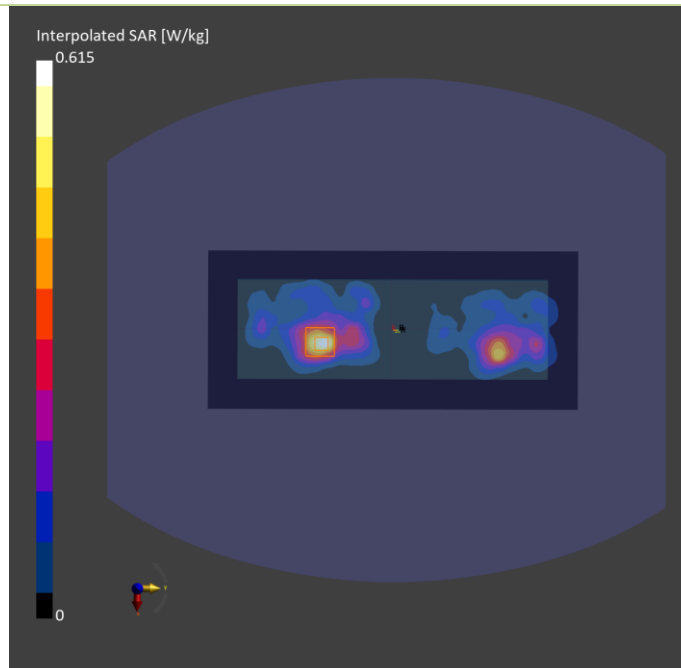
Phantom	TSL, Measured Date	Probe, Calibration Date	DAE, Calibration Date
ELI V8.0 (20deg probe tilt) - 2118	H51T72N5 , 2024-May-03	EX3DV4 - SN7797, 2024-01-08	DAE4 Sn1757, 2023-10-23

Scan Setup

	Area Scan	Zoom Scan
Grid Extents [mm]	120.0 x 280.0	24.0 x 24.0 x 22.0
Grid Steps [mm]	10.0 x 10.0	4.0 x 4.0 x 1.4
Sensor Surface [mm]	3.0	1.4

Measurement Results

	Area Scan	Zoom Scan
Date	2024-05-03	2024-05-03
psSAR1g [W/kg]	0.441	0.469
psSAR10g [W/kg]	0.163	0.170
Power Drift [dB]	0.03	-0.05
M2/M1 [%]		59.2
Dist 3dB Peak [mm]		7.6



Plots of Measurement

Measurement Report

P05 WLAN5.9G_802.11ac VHT80_Bottom Side_5mm_Ch171_SKU2_Ant 0+1_PIFA

Device under Test Properties

Model, Manufacturer	Dimensions [mm]	IMEI	DUT Type
BBUI-WTW-P24020119,	235.0 x 75.0 x 50.0		Module

Exposure Conditions

Phantom Section, TSL	Position, Test Distance [mm]	Band	Group, UID	Frequency [MHz], Channel Number	Conversion Factor	TSL Conductivity [S/m]	TSL Permittivity
Flat,	Bottom Side, 5.00	U-NII-4	WLAN, 10544-AAC	5855.0, 171	4.88	5.15	34.3

Hardware Setup

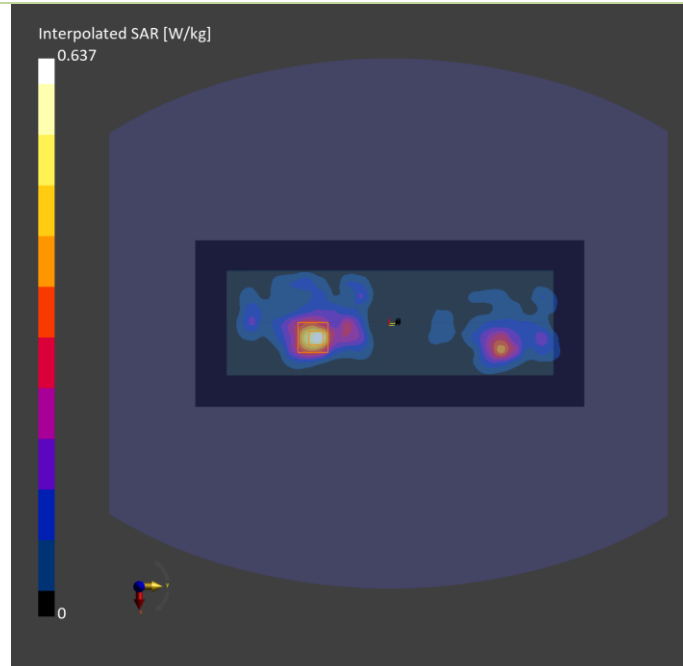
Phantom	TSL, Measured Date	Probe, Calibration Date	DAE, Calibration Date
ELI V8.0 (20deg probe tilt) - 2105	H51T72N6, 2024-May-03	EX3DV4 - SN7554, 2023-09-19	DAE4 Sn1431, 2023-08-24

Scan Setup

	Area Scan	Zoom Scan
Grid Extents [mm]	120.0 x 280.0	24.0 x 24.0 x 22.0
Grid Steps [mm]	10.0 x 10.0	4.0 x 4.0 x 1.4
Sensor Surface [mm]	3.0	1.4

Measurement Results

	Area Scan	Zoom Scan
Date	2024-05-03	2024-05-03
psSAR1g [W/kg]	0.452	0.503
psSAR10g [W/kg]	0.164	0.170
Power Drift [dB]	0.12	-0.11
M2/M1 [%]		55.6
Dist 3dB Peak [mm]		8.1



Plots of Measurement

Measurement Report

P06 BT_LE_Bottom Side_5mm_Ch0_SKU2_Ant 0_PIFA

Device under Test Properties

Model, Manufacturer	Dimensions [mm]	IMEI	DUT Type
BBUI-WTW-P24020119,	235.0 x 75.0 x 50.0		Module

Exposure Conditions

Phantom Section, TSL	Position, Test Distance [mm]	Band	Group, UID	Frequency [MHz], Channel Number	Conversion Factor	TSL Conductivity [S/m]	TSL Permittivity
Flat,	Bottom Side, 5.00	ISM 2.4 GHz Band	Bluetooth, 10670-AAA	2402.0, 0	6.76	1.79	39.9

Hardware Setup

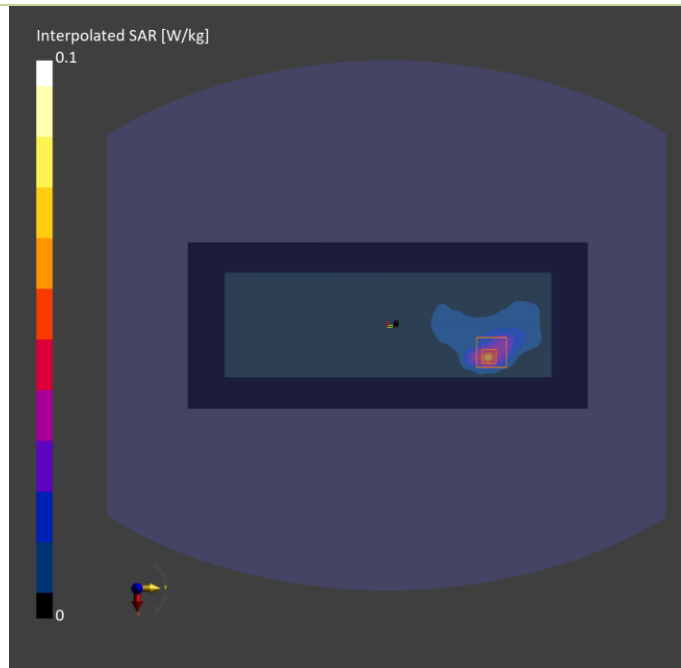
Phantom	TSL, Measured Date	Probe, Calibration Date	DAE, Calibration Date
ELI V8.0 (20deg probe tilt) - 2118	H06T27N5 , 2024-May-03	EX3DV4 - SN7797, 2024-01-08	DAE4 Sn1757, 2023-10-23

Scan Setup

	Area Scan	Zoom Scan
Grid Extents [mm]	120.0 x 288.0	30.0 x 30.0 x 30.0
Grid Steps [mm]	12.0 x 12.0	5.0 x 5.0 x 5.0
Sensor Surface [mm]	3.0	1.4

Measurement Results

	Area Scan	Zoom Scan
Date	2024-05-03	2024-05-03
psSAR1g [W/kg]	0.073	0.097
psSAR10g [W/kg]	0.019	0.019
Power Drift [dB]	-0.09	0.01
M2/M1 [%]		40.9
Dist 3dB Peak [mm]		5.9



Plots of Measurement

Measurement Report

P07 BT_BDR_Bottom Side_5mm_Ch78_SKU2_Ant 0_PIFA

Device under Test Properties

Model, Manufacturer	Dimensions [mm]	IMEI	DUT Type
BBUI-WTW-P24020119,	235.0 x 75.0 x 50.0		Module

Exposure Conditions

Phantom Section, TSL	Position, Test Distance [mm]	Band	Group, UID	Frequency [MHz], Channel Number	Conversion Factor	TSL Conductivity [S/m]	TSL Permittivity
Flat,	Bottom Side, 5.00	ISM 2.4 GHz Band	Bluetooth, 10032-CAA	2480.0, 78	6.76	1.85	39.8

Hardware Setup

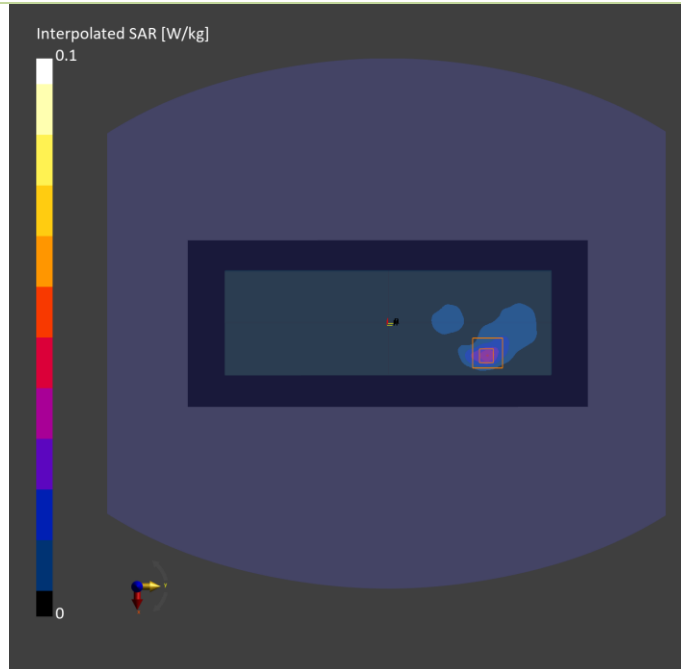
Phantom	TSL, Measured Date	Probe, Calibration Date	DAE, Calibration Date
ELI V8.0 (20deg probe tilt) - 2118	H06T27N5 , 2024-May-03	EX3DV4 - SN7797, 2024-01-08	DAE4 Sn1757, 2023-10-23

Scan Setup

	Area Scan	Zoom Scan
Grid Extents [mm]	120.0 x 288.0	30.0 x 30.0 x 30.0
Grid Steps [mm]	12.0 x 12.0	5.0 x 5.0 x 5.0
Sensor Surface [mm]	3.0	1.4

Measurement Results

	Area Scan	Zoom Scan
Date	2024-05-03	2024-05-03
psSAR1g [W/kg]	0.029	0.031
psSAR10g [W/kg]	0.012	0.013
Power Drift [dB]	16.37	0.05
M2/M1 [%]		35.7
Dist 3dB Peak [mm]		6.4



Plots of Measurement

Measurement Report

P08 WLAN2.4G_802.11b_Top Side_5mm_Ch11_SKU2_Ant 0+1_Monopole

Device under Test Properties

Model, Manufacturer	Dimensions [mm]	IMEI	DUT Type
BBUI-WTW-P24020119,	235.0 x 75.0 x 50.0		Module

Exposure Conditions

Phantom Section, TSL	Position, Test Distance [mm]	Band	Group, UID	Frequency [MHz], Channel Number	Conversion Factor	TSL Conductivity [S/m]	TSL Permittivity
Flat,	Top Side, 5.00	WLAN 2.4GHz	WLAN, 10012-CAB	2462.0, 11	6.76	1.84	39.8

Hardware Setup

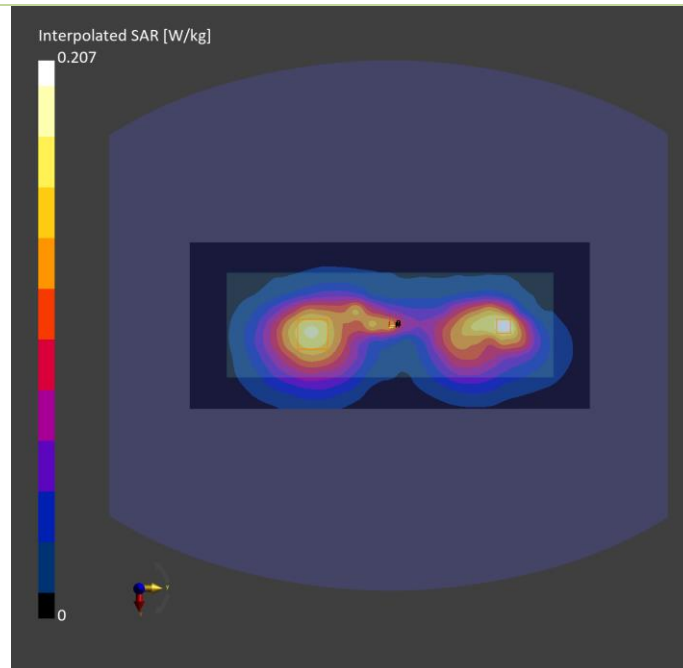
Phantom	TSL, Measured Date	Probe, Calibration Date	DAE, Calibration Date
ELI V8.0 (20deg probe tilt) - 2118	H06T27N5 , 2024-May-03	EX3DV4 - SN7797, 2024-01-08	DAE4 Sn1757, 2023-10-23

Scan Setup

	Area Scan	Zoom Scan
Grid Extents [mm]	120.0 x 288.0	30.0 x 30.0 x 30.0
Grid Steps [mm]	12.0 x 12.0	5.0 x 5.0 x 5.0
Sensor Surface [mm]	3.0	1.4

Measurement Results

	Area Scan	Zoom Scan
Date	2024-05-03	2024-05-03
psSAR1g [W/kg]	0.118	0.124
psSAR10g [W/kg]	0.064	0.075
Power Drift [dB]	0.05	-0.11
M2/M1 [%]		47.8
Dist 3dB Peak [mm]		9.3



Plots of Measurement

Measurement Report

P09 WLAN5.3G_802.11ac VHT80_Left Side_5mm_Ch58_SKU2_Ant 0+1_Monopole

Device under Test Properties

Model, Manufacturer	Dimensions [mm]	IMEI	DUT Type
BBUI-WTW-P24020119,	235.0 x 75.0 x 50.0		Module

Exposure Conditions

Phantom Section, TSL	Position, Test Distance [mm]	Band	Group, UID	Frequency [MHz], Channel Number	Conversion Factor	TSL Conductivity [S/m]	TSL Permittivity
Flat,	Left Side, 5.00	WLAN 5GHz	WLAN, 10544-AAC	5290.0, 58	5.07	4.55	36.6

Hardware Setup

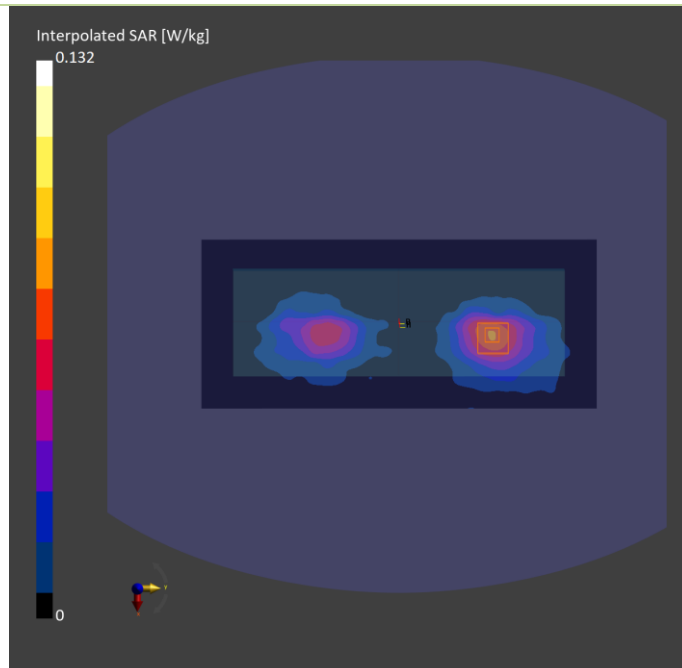
Phantom	TSL, Measured Date	Probe, Calibration Date	DAE, Calibration Date
ELI V8.0 (20deg probe tilt) - 2118	H51T72N5 , 2024-May-03	EX3DV4 - SN7797, 2024-01-08	DAE4 Sn1757, 2023-10-23

Scan Setup

	Area Scan	Zoom Scan
Grid Extents [mm]	120.0 x 280.0	24.0 x 24.0 x 22.0
Grid Steps [mm]	10.0 x 10.0	4.0 x 4.0 x 1.4
Sensor Surface [mm]	3.0	1.4

Measurement Results

	Area Scan	Zoom Scan
Date	2024-05-03	2024-05-03
psSAR1g [W/kg]	0.074	0.077
psSAR10g [W/kg]	0.028	0.032
Power Drift [dB]	-0.13	-0.12
M2/M1 [%]		67.4
Dist 3dB Peak [mm]		12.0



Plots of Measurement

Measurement Report

P10 WLAN5.6G_802.11ac VHT80_Left Side_5mm_Ch138_SKU2_Ant 0+1_Monopole

Device under Test Properties

Model, Manufacturer	Dimensions [mm]	IMEI	DUT Type
BBUI-WTW-P24020119,	235.0 x 75.0 x 50.0		Module

Exposure Conditions

Phantom Section, TSL	Position, Test Distance [mm]	Band	Group, UID	Frequency [MHz], Channel Number	Conversion Factor	TSL Conductivity [S/m]	TSL Permittivity
Flat,	Left Side, 5.00	WLAN 5GHz	WLAN, 10544-AAC	5690.0, 138	4.49	5.07	36.1

Hardware Setup

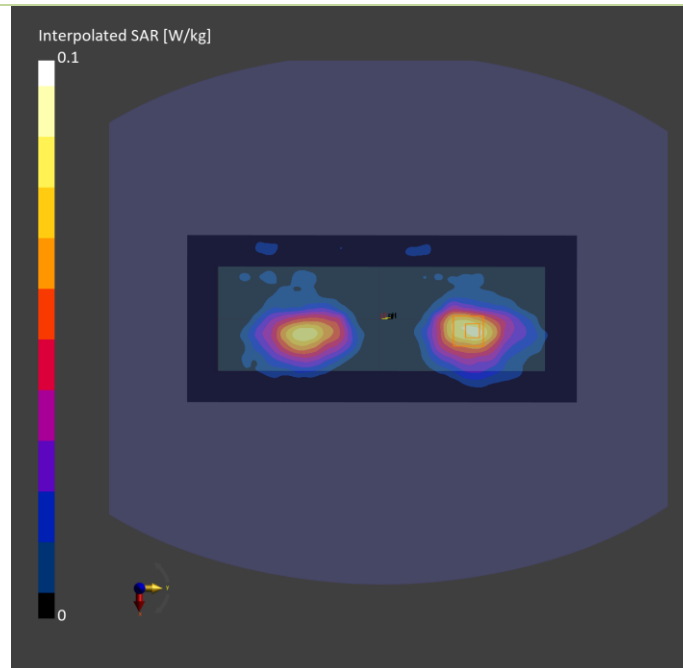
Phantom	TSL, Measured Date	Probe, Calibration Date	DAE, Calibration Date
ELI V8.0 (20deg probe tilt) - 2118	H51T72N5 , 2024-May-03	EX3DV4 - SN7797, 2024-01-08	DAE4 Sn1757, 2023-10-23

Scan Setup

	Area Scan	Zoom Scan
Grid Extents [mm]	120.0 x 280.0	24.0 x 24.0 x 22.0
Grid Steps [mm]	10.0 x 10.0	4.0 x 4.0 x 1.4
Sensor Surface [mm]	3.0	1.4

Measurement Results

	Area Scan	Zoom Scan
Date	2024-05-03	2024-05-03
psSAR1g [W/kg]	0.066	0.073
psSAR10g [W/kg]	0.029	0.031
Power Drift [dB]	-0.02	0.03
M2/M1 [%]		61.5
Dist 3dB Peak [mm]		12.0



Plots of Measurement

Measurement Report

P11 WLAN5.8G_802.11ac VHT80_Left Side_5mm_Ch155_SKU2_Ant 0+1_Monopole

Device under Test Properties

Model, Manufacturer	Dimensions [mm]	IMEI	DUT Type
BBUI-WTW-P24020119,	235.0 x 75.0 x 50.0		Module

Exposure Conditions

Phantom Section, TSL	Position, Test Distance [mm]	Band	Group, UID	Frequency [MHz], Channel Number	Conversion Factor	TSL Conductivity [S/m]	TSL Permittivity
Flat,	Left Side, 5.00	WLAN 5GHz	WLAN, 10544-AAC	5775.0, 155	4.49	5.07	35.8

Hardware Setup

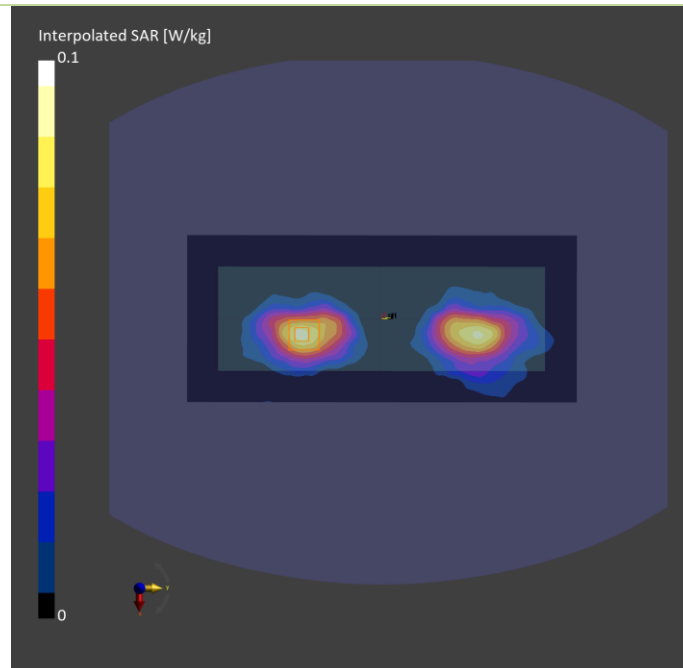
Phantom	TSL, Measured Date	Probe, Calibration Date	DAE, Calibration Date
ELI V8.0 (20deg probe tilt) - 2118	H51T72N5 , 2024-May-03	EX3DV4 - SN7797, 2024-01-08	DAE4 Sn1757, 2023-10-23

Scan Setup

	Area Scan	Zoom Scan
Grid Extents [mm]	120.0 x 280.0	24.0 x 24.0 x 22.0
Grid Steps [mm]	10.0 x 10.0	4.0 x 4.0 x 1.4
Sensor Surface [mm]	3.0	1.4

Measurement Results

	Area Scan	Zoom Scan
Date	2024-05-03	2024-05-03
psSAR1g [W/kg]	0.067	0.074
psSAR10g [W/kg]	0.028	0.031
Power Drift [dB]	-0.09	0.11
M2/M1 [%]		63.7
Dist 3dB Peak [mm]		12.0



Plots of Measurement

Measurement Report

P12 WLAN5.9G_802.11ac VHT80_Left Side_5mm_Ch171_SKU2_Ant 0+1_Monopole

Device under Test Properties

Model, Manufacturer	Dimensions [mm]	IMEI	DUT Type
BBUI-WTW-P24020119,	235.0 x 75.0 x 50.0		Module

Exposure Conditions

Phantom Section, TSL	Position, Test Distance [mm]	Band	Group, UID	Frequency [MHz], Channel Number	Conversion Factor	TSL Conductivity [S/m]	TSL Permittivity
Flat,	Left Side, 5.00	UNII-4	WLAN, 10544-AAC	5855.0, 171	4.88	5.15	34.3

Hardware Setup

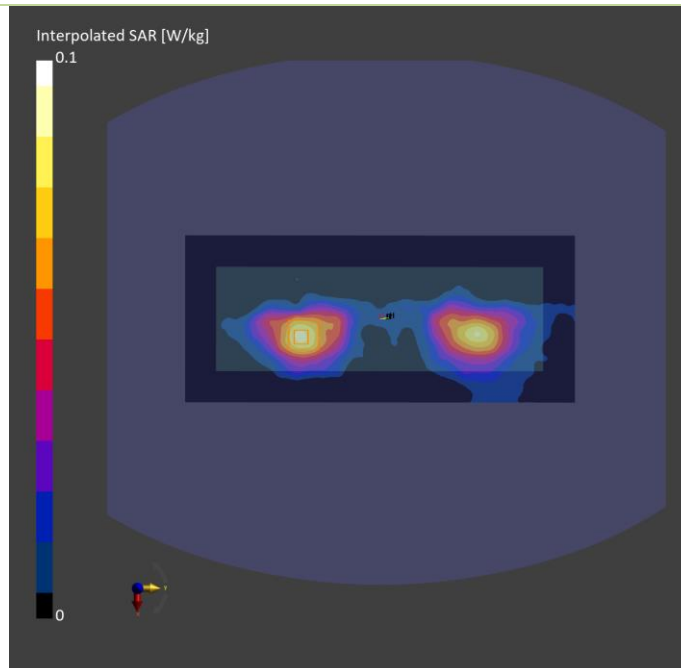
Phantom	TSL, Measured Date	Probe, Calibration Date	DAE, Calibration Date
ELI V8.0 (20deg probe tilt) - 2105	H51T72N6, 2024-May-03	EX3DV4 - SN7554, 2023-09-19	DAE4 Sn1431, 2023-08-24

Scan Setup

	Area Scan	Zoom Scan
Grid Extents [mm]	120.0 x 280.0	24.0 x 24.0 x 22.0
Grid Steps [mm]	10.0 x 10.0	4.0 x 4.0 x 1.4
Sensor Surface [mm]	3.0	1.4

Measurement Results

	Area Scan	Zoom Scan
Date	2024-05-03	2024-05-03
psSAR1g [W/kg]	0.067	0.073
psSAR10g [W/kg]	0.029	0.029
Power Drift [dB]	0.06	-0.04
M2/M1 [%]		57.3
Dist 3dB Peak [mm]		12.0



Plots of Measurement

Measurement Report

P13 BT_LE_Top Side_5mm_Ch0_SKU2_Ant 0_Monopole

Device under Test Properties

Model, Manufacturer	Dimensions [mm]	IMEI	DUT Type
BBUI-WTW-P24020119,	235.0 x 75.0 x 50.0		Module

Exposure Conditions

Phantom Section, TSL	Position, Test Distance [mm]	Band	Group, UID	Frequency [MHz], Channel Number	Conversion Factor	TSL Conductivity [S/m]	TSL Permittivity
Flat,	Top Side, 5.00	ISM 2.4 GHz Band	Bluetooth, 10670-AAA	2402.0, 0	6.76	1.79	39.9

Hardware Setup

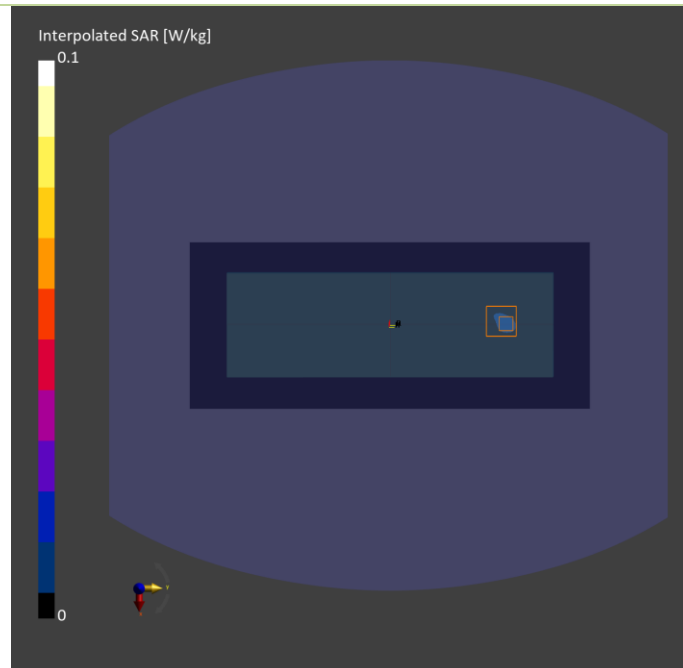
Phantom	TSL, Measured Date	Probe, Calibration Date	DAE, Calibration Date
ELI V8.0 (20deg probe tilt) - 2118	H06T27N5 , 2024-May-03	EX3DV4 - SN7797, 2024-01-08	DAE4 Sn1757, 2023-10-23

Scan Setup

	Area Scan	Zoom Scan
Grid Extents [mm]	120.0 x 288.0	30.0 x 30.0 x 30.0
Grid Steps [mm]	12.0 x 12.0	5.0 x 5.0 x 5.0
Sensor Surface [mm]	3.0	1.4

Measurement Results

	Area Scan	Zoom Scan
Date	2024-05-03	2024-05-03
psSAR1g [W/kg]	0.014	0.024
psSAR10g [W/kg]	0.004	0.006
Power Drift [dB]	0.02	0.01
M2/M1 [%]		16.0
Dist 3dB Peak [mm]		5.1



Plots of Measurement

Measurement Report

P14 BT_BDR_Top Side_5mm_Ch39_SKU2_Ant 0_Monopole

Device under Test Properties

Model, Manufacturer	Dimensions [mm]	IMEI	DUT Type
BBUI-WTW-P24020119,	235.0 x 75.0 x 50.0		Module

Exposure Conditions

Phantom Section, TSL	Position, Test Distance [mm]	Band	Group, UID	Frequency [MHz], Channel Number	Conversion Factor	TSL Conductivity [S/m]	TSL Permittivity
Flat,	BACK, 5.00	ISM 2.4 GHz Band	Bluetooth, 10032-CAA	2441.0, 39	6.76	1.82	39.8

Hardware Setup

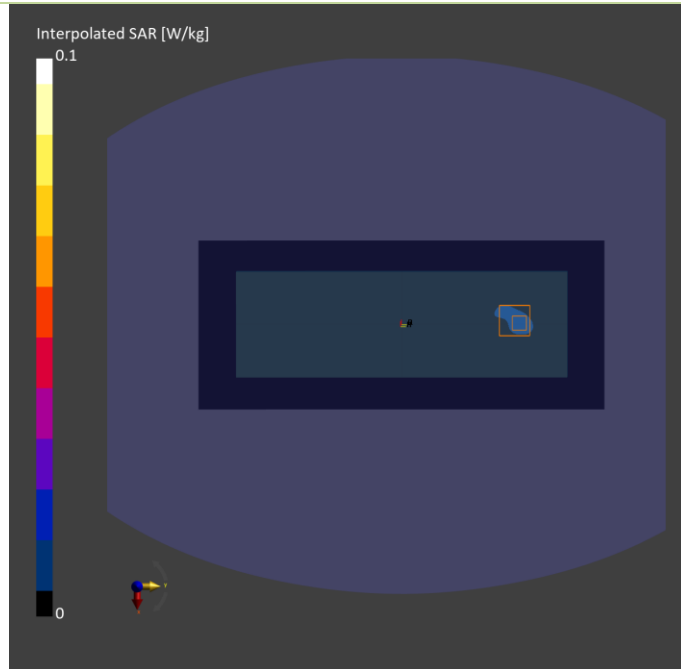
Phantom	TSL, Measured Date	Probe, Calibration Date	DAE, Calibration Date
ELI V8.0 (20deg probe tilt) - 2118	H06T27N5 , 2024-May-03	EX3DV4 - SN7797, 2024-01-08	DAE4 Sn1757, 2023-10-23

Scan Setup

	Area Scan	Zoom Scan
Grid Extents [mm]	120.0 x 288.0	30.0 x 30.0 x 30.0
Grid Steps [mm]	12.0 x 12.0	5.0 x 5.0 x 5.0
Sensor Surface [mm]	3.0	1.4

Measurement Results

	Area Scan	Zoom Scan
Date	2024-05-03	2024-05-03
psSAR1g [W/kg]	0.008	0.009
psSAR10g [W/kg]	0.004	0.005
Power Drift [dB]	0.01	0.01
M2/M1 [%]		35.9
Dist 3dB Peak [mm]		5.2



Appendix C. Tissue & System Verification

The measuring results for tissue simulating liquid and system check are shown as below.

Note:

1. For Section 4.3, the dielectric properties of the tissue simulating liquid have been measured within 24 hours before the SAR testing and within $\pm 10\%$ of the target values. Liquid temperature during the SAR testing has kept within $\pm 2^\circ\text{C}$.
2. For Section 4.4, The SAR measurement system was validated according to procedures in FCC KDB 865664 D0. The validation status in tabulated summary is as below.
3. For Section 4.5, Comparing to the reference SAR value provided by SPEAG in dipole calibration certificate, the deviation of system check results is within its specification of 10 %. The result indicates the system check can meet the variation criterion and the plots please refer to Appendix A of this report.



Tissue Verification									Validation for CW			Validation for Modulation				System Check					Note			
Plot No.	Frequency (MHz)	Liquid Temp. (°C)	Conductivity (σ)	Permittivity (ε _r)	Targeted Conductivity (σ)	Targeted Permittivity (ε _r)	Deviation Conductivity (σ)	Deviation Permittivity (ε _r)	Sensitivity Range	Probe Linearity	Probe Isotropy	Modulation Type	Duty Factor	PAR	Date	Frequency (MHz)	Targeted 1g SAR (W/kg)	Measured 1g SAR (W/kg)	Normalized 1g SAR (W/kg)	Deviation (%)	Dipole S/N	Probe S/N	DAE S/N	Output Power (dBm)
S01	2450	22.4	1.83	39.8	1.8	39.2	1.67	1.53	Pass	Pass	Pass	OFDM	N/A	Pass	May. 03, 2024	2450	52.90	2.5	49.88	-5.71	737	7797	1757	17
S02	5250	22.4	4.49	36.8	4.71	35.9	-4.67	2.51	Pass	Pass	Pass	OFDM	N/A	Pass	May. 03, 2024	5250	80.20	3.92	78.21	-2.48	1019	7797	1757	17
S03	5600	22.4	4.88	36.4	5.07	35.5	-3.75	2.54	Pass	Pass	Pass	OFDM	N/A	Pass	May. 03, 2024	5600	82.90	4.51	89.99	8.55	1019	7797	1757	17
S04	5750	22.4	5.03	36.0	5.22	35.4	-3.64	1.69	Pass	Pass	Pass	OFDM	N/A	Pass	May. 03, 2024	5750	78.40	3.89	77.62	-1.00	1203	7797	1757	17
S05	5800	22.4	5.1	34.4	5.27	35.3	-3.23	-2.55	Pass	Pass	Pass	OFDM	N/A	Pass	May. 03, 2024	5800	80.30	3.76	75.02	-6.57	1019	7554	1431	17
S06	2450	22.4	1.83	39.8	1.8	39.2	1.67	1.53	Pass	Pass	Pass	OFDM	N/A	Pass	May. 03, 2024	2450	52.90	2.5	49.88	-5.71	737	7797	1757	17
S07	2450	22.4	1.83	39.8	1.8	39.2	1.67	1.53	Pass	Pass	Pass	OFDM	N/A	Pass	May. 03, 2024	2450	52.90	2.5	49.88	-5.71	737	7797	1757	17
S08	2450	22.4	1.83	39.8	1.8	39.2	1.67	1.53	Pass	Pass	Pass	OFDM	N/A	Pass	May. 03, 2024	2450	52.90	2.5	49.88	-5.71	737	7797	1757	17
S09	5250	22.4	4.49	36.8	4.71	35.9	-4.67	2.51	Pass	Pass	Pass	OFDM	N/A	Pass	May. 03, 2024	5250	80.20	3.92	78.21	-2.48	1019	7797	1757	17
S10	5600	22.4	4.88	36.4	5.07	35.5	-3.75	2.54	Pass	Pass	Pass	OFDM	N/A	Pass	May. 03, 2024	5600	82.90	4.51	89.99	8.55	1019	7797	1757	17
S11	5750	22.4	5.03	36.0	5.22	35.4	-3.64	1.69	Pass	Pass	Pass	OFDM	N/A	Pass	May. 03, 2024	5750	78.40	3.89	77.62	-1.00	1203	7797	1757	17
S12	5800	22.4	5.1	34.4	5.27	35.3	-3.23	-2.55	Pass	Pass	Pass	OFDM	N/A	Pass	May. 03, 2024	5800	80.30	3.76	75.02	-6.57	1019	7554	1431	17
S13	2450	22.4	1.83	39.8	1.8	39.2	1.67	1.53	Pass	Pass	Pass	OFDM	N/A	Pass	May. 03, 2024	2450	52.90	2.5	49.88	-5.71	737	7797	1757	17
S14	2450	22.4	1.83	39.8	1.8	39.2	1.67	1.53	Pass	Pass	Pass	OFDM	N/A	Pass	May. 03, 2024	2450	52.90	2.5	49.88	-5.71	737	7797	1757	17



BUREAU
VERITAS

Appendix F. SAR Test Result

SAR Results for Body Exposure Condition.

Note:

1. The SAR testing was verified on the worst case of original report to ensure compliance.

Body SAR Test Result

Body SAR Test Result																
System & Position						DUT Configuration			SAR							
Plot No.	Band	Mode	Test Position	Separation Distance (mm)	Channel	EUT SKU	Ant Status	Antenna Type	Duty Cycle	Crest Factor	Max. Tune-up Power (dBm)	Measured Conducted Power (dBm)	Scaling Factor	Power Drift (dB)	Measured SAR-1g (W/kg)	Scaled SAR-1g (W/kg)
1	WLAN2.4G	802.11b	Bottom Side	5	1	SKU2	Ant 1	PIFA	100.00	1.00	15.00	14.84	1.04	0.01	0.344	0.36
2	WLAN5.3G	802.11ac VHT80	Bottom Side	5	58	SKU2	Ant 0+1	PIFA	100.00	1.00	16.50	16.39	1.03	0.05	0.404	0.42
3	WLAN5.6G	802.11ac VHT80	Bottom Side	5	138	SKU2	Ant 0+1	PIFA	100.00	1.00	16.50	16.39	1.03	0.05	0.448	0.46
4	WLAN5.8G	802.11ac VHT80	Bottom Side	5	155	SKU2	Ant 0+1	PIFA	100.00	1.00	16.50	16.39	1.03	-0.05	0.469	0.48
5	WLAN5.9G	802.11ac VHT80	Bottom Side	5	171	SKU2	Ant 0+1	PIFA	100.00	1.00	16.50	16.44	1.01	-0.11	0.503	0.51
6	BT(Higher Power)	LE	Bottom Side	5	0	SKU2	Ant 0	PIFA	60.90	1.64	12.50	12.38	1.03	0.01	0.097	0.16
7	BT(Lower Power)	BDR	Bottom Side	5	78	SKU2	Ant 0	PIFA	100.00	1.00	6.50	6.43	1.02	0.05	0.031	0.03
8	WLAN2.4G	802.11b	Top Side	5	11	SKU2	Ant 0+1	Monopole	100.00	1.00	18.00	17.93	1.02	-0.11	0.124	0.13
9	WLAN5.3G	802.11ac VHT80	Left Side	5	58	SKU2	Ant 0+1	Monopole	100.00	1.00	16.50	16.39	1.03	-0.12	0.077	0.08
10	WLAN5.6G	802.11ac VHT80	Left Side	5	138	SKU2	Ant 0+1	Monopole	100.00	1.00	16.50	16.37	1.03	0.03	0.073	0.08
11	WLAN5.8G	802.11ac VHT80	Left Side	5	155	SKU2	Ant 0+1	Monopole	100.00	1.00	16.50	16.36	1.03	0.11	0.074	0.08
12	WLAN5.9G	802.11ac VHT80	Left Side	5	171	SKU2	Ant 0+1	Monopole	100.00	1.00	16.50	16.41	1.02	-0.04	0.073	0.07
13	BT(Higher Power)	LE	Top Side	5	0	SKU2	Ant 0	Monopole	60.90	1.64	12.50	12.26	1.06	0.01	0.024	0.04
14	BT(Lower Power)	BDR	Top Side	5	39	SKU2	Ant 0	Monopole	100.00	1.00	6.50	6.31	1.04	0.01	0.009	0.01



BUREAU
VERITAS

Appendix J. Calibration of Test Equipment List

Calibration of Test Equipment List are shown as below.



Equipment	Manufacturer	Model	SN	Cal. Date	Cal. Interval
System Validation Dipole	SPEAG	D2450V2	737	Feb. 19, 2024	1 Year
System Validation Dipole	SPEAG	D5GHzV2	1019	Feb. 13, 2024	1 Year
System Validation Dipole	SPEAG	D5GHzV2	1203	Dec. 14, 2023	1 Year
Dosimetric E-Field Probe	SPEAG	EX3DV4	7554	Sep. 19, 2023	1 Year
Dosimetric E-Field Probe	SPEAG	EX3DV4	7797	Jan. 08, 2024	1 Year
Data Acquisition Electronics	SPEAG	DAE4	1431	Aug. 24, 2023	1 Year
Data Acquisition Electronics	SPEAG	DAE4	1757	Oct. 23, 2023	1 Year
Universal Wireless Test Set	Anritsu	MT8870A	6262411397	Dec. 04, 2023	1 Year
Thermometer	YFE	YF-160A	120702369	Aug. 08, 2023	1 Year
Dielectric Assessment Kit	SPEAG	DAKS-3.5	1092	May 23, 2023	1 Year
Dielectric Assessment Kit	SPEAG	DAKS_VNA R140	0010917	May 22, 2023	1 Year
Powersource1	SPEAG	SE_UMS_160 BA	1052	Jul. 13, 2023	1 Year