

Antenna Type:

Wi-Fi1 → PIFA FPC with coaxial cable

Wi-Fi2/BT → PIFA FPC with coaxial cable

Antenna Brand:

INPAQ Technology

Antenna Model Name (P/N):

Wi-Fi1 → WA-F-LB-06-003

Wi-Fi2/BT → WA-F-LB-01-113

WI-FI Antenna Peak Gain:**1) WI-FI1 target power**Reference to module
CE/AUS report

Wi-Fi1	Channel	Gain	Wi-Fi1	Channel	Gain
IEEE 802.11b	Ch1	0.3	IEEE 802.11b	Ch36	0.8
	Ch6	0.9		Ch100	1.5
	Ch11	1.0		Ch161	1.5

2) WI-FI2 target powerReference to module
CE/AUS report

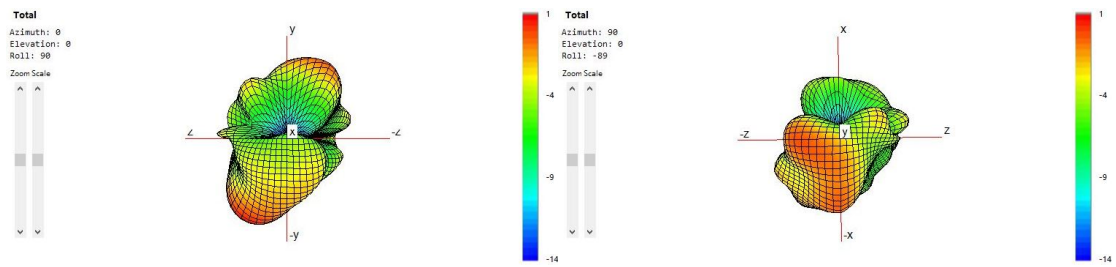
Wi-Fi1	Channel	Gain	Wi-Fi1	Channel	Gain
IEEE 802.11b	Ch1	0.2	IEEE 802.11b	Ch36	0.6
	Ch6	-0.3		Ch100	0.5
	Ch11	-0.4		Ch161	2.7

BT Antenna Peak Gain:**1) BT target power**Reference to module
CE/AUS report

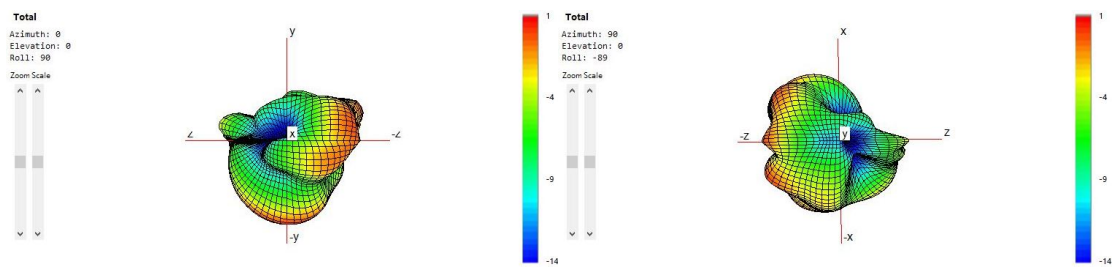
BT	Channel	Gain
Bluetooth	Ch0	0.2
	Ch36	-0.3
	Ch78	-0.4

WI-FI1 Radiation Pattern:

2440MHz

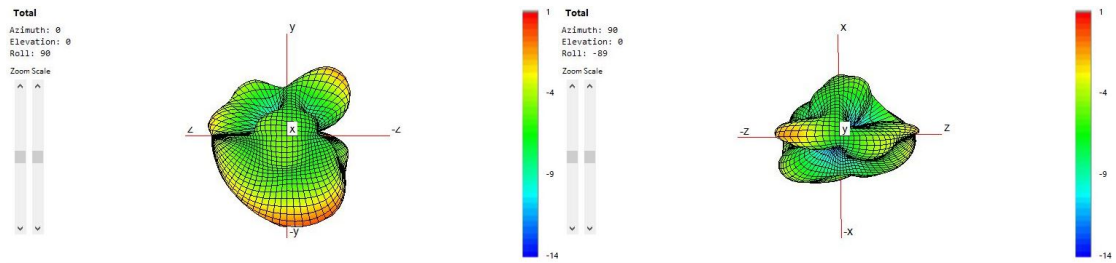


5500MHz

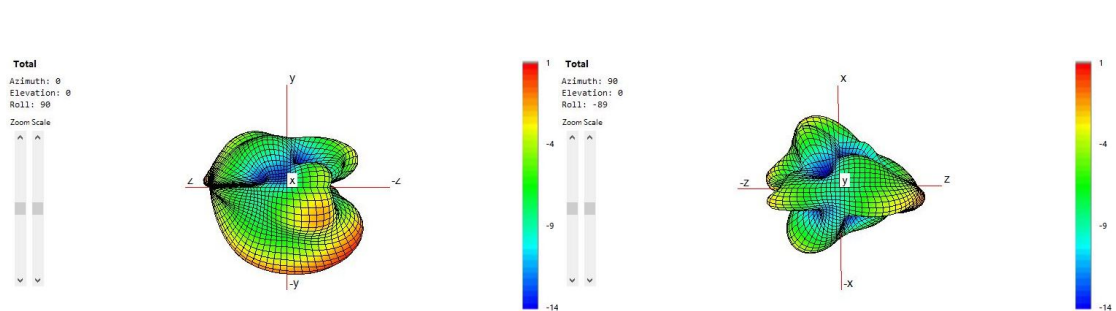


WI-FI2/BT Radiation Pattern:

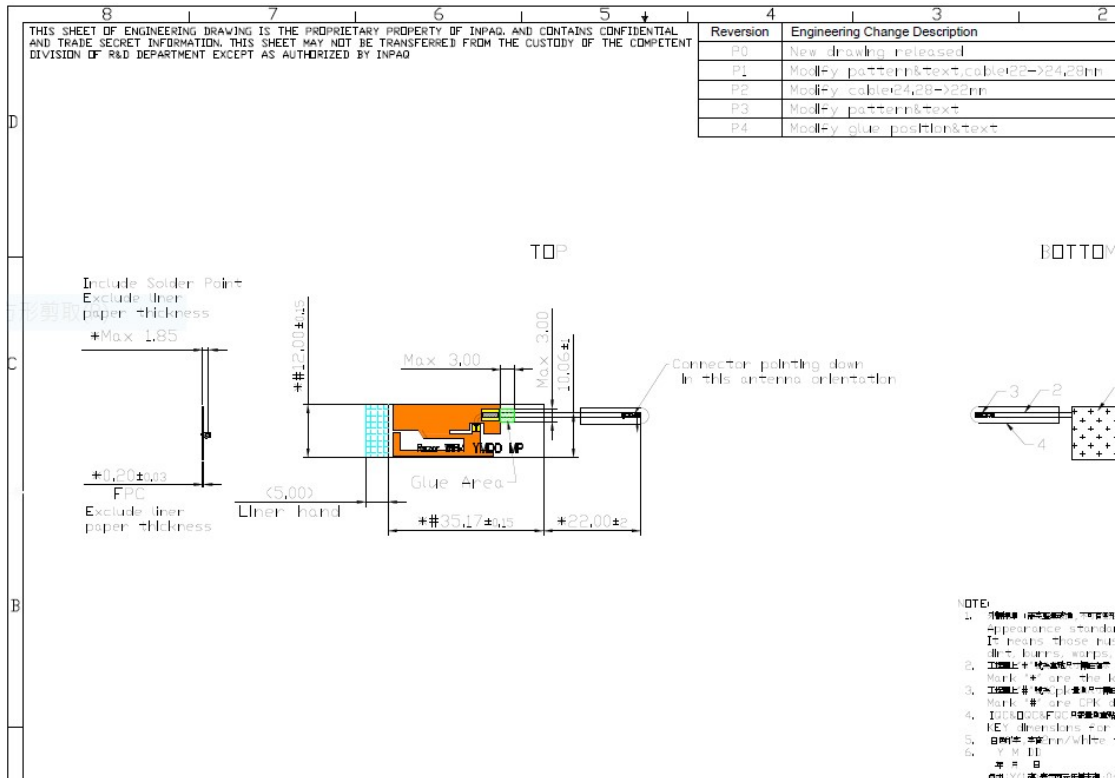
2440MHz



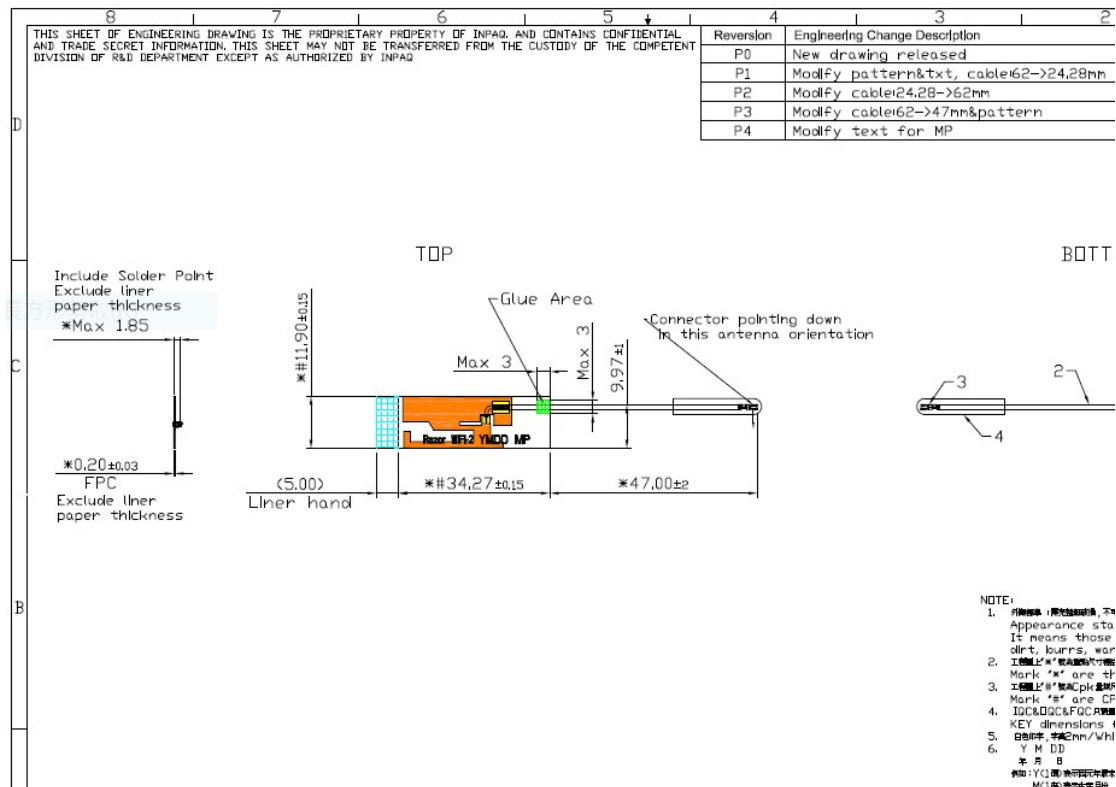
5500MHz



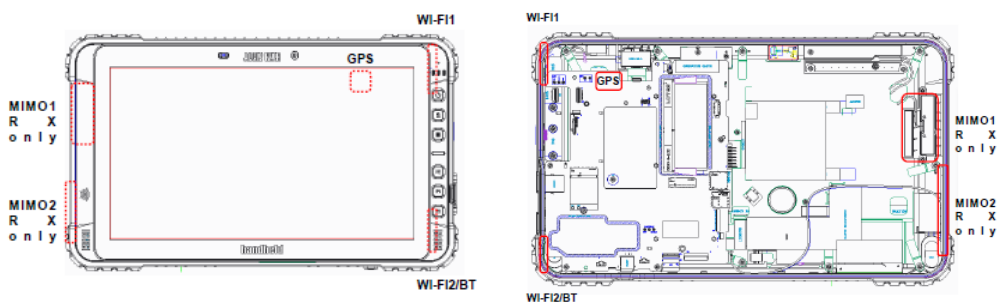
WI-FI1 Antenna drawing:



WI-FI2/BT Antenna drawing:



Antenna Location:



Test Equipment:

Site Description	Chamber Manufacturer	Type
Wistron	Rayzone 2800	Fully Anechoic
Software Version	V1.3.3	
Site location	3F., No. 100, Sec. 1, Xintai 5th Rd, Xizhi District, New Taipei City, Taiwan	
Test Engineer	Sam SH Yang	
Test Date	2023/06/02	

Equipment Description	Manufacturer	Model	Calibration Date	Due Date
Network Analyzer	KEYSIGHT	E5071C	2022.07.22	2023.08.09