

Antenna Type:

Wi-Fi1 → PIFA FPC with coaxial cable

Wi-Fi2/BT → PIFA FPC with coaxial cable

Antenna Brand:

INPAQ Technology

Antenna Model Name (P/N):

Wi-Fi1 → WA-F-LB-02-304

Wi-Fi2/BT → WA-F-LB-01-110

WI-FI Antenna Peak Gain:

Wi-Fi1	Channel	DVT2.2	Wi-Fi1	Channel	DVT2.2
		Gain			Gain
IEEE 802.11b	Ch1	2.4	IEEE 802.11a	Ch36	3.0
	Ch6	2.5		Ch100	3.6
	Ch11	2.7		Ch161	2.8

1) WI-FI1 target powerReference to module
FCC/IC report

Wi-Fi2	Channel	DVT2.2	Wi-Fi2	Channel	DVT2.2
		Gain			Gain
IEEE 802.11b	Ch1	0.6	IEEE 802.11a	Ch36	2.6
	Ch6	-0.4		Ch100	2.0
	Ch11	-0.1		Ch161	2.8

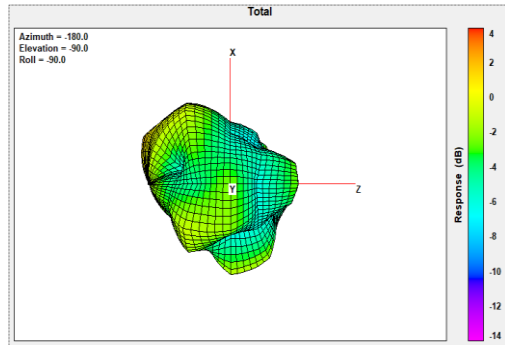
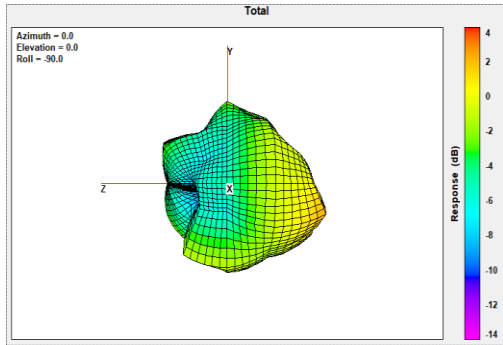
2) WI-FI2 target powerReference to module
FCC/IC report**BT Antenna Peak Gain:**

BT	Channel	DVT2.2
		Gain
Bluetooth	CH0	0.6
	CH36	-0.4
	CH78	-0.1

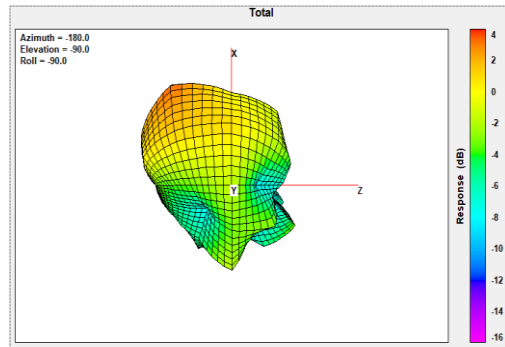
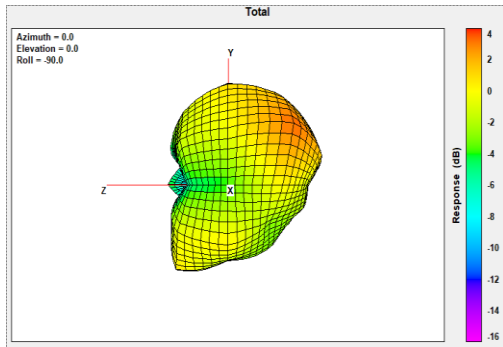
1) BT target powerReference to module
FCC/IC report

WI-FI1 Radiation Pattern:

2440MHz

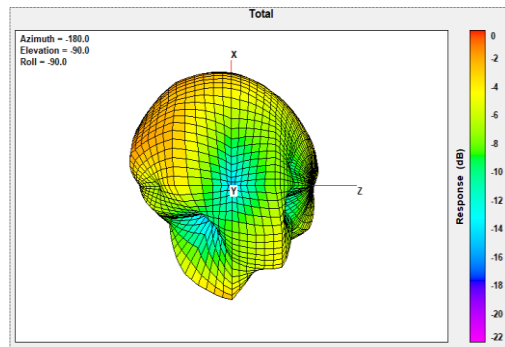
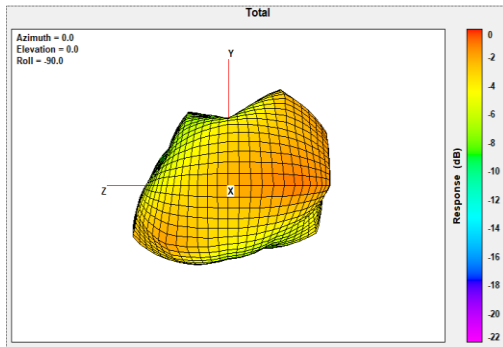


5500MHz

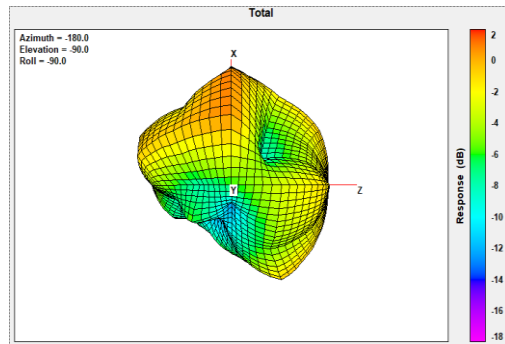
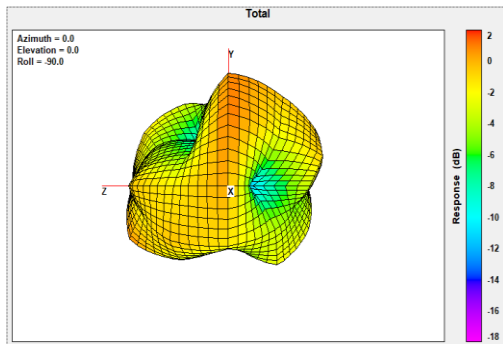


WI-FI2/BT Radiation Pattern:

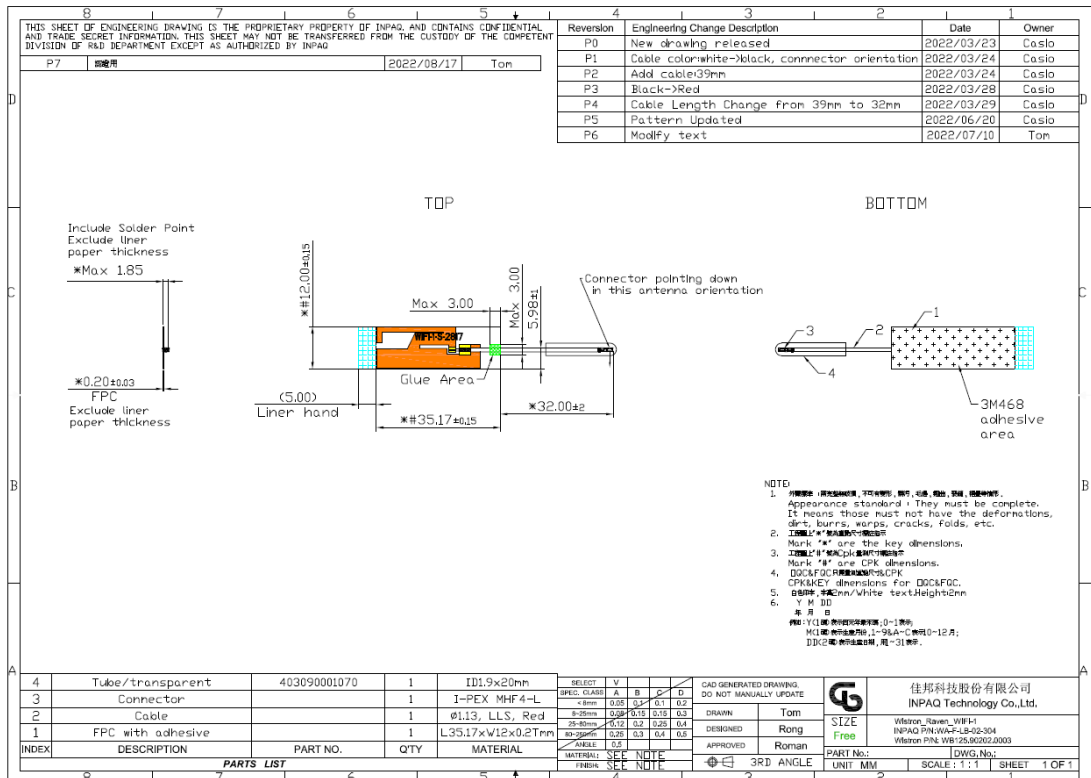
2440MHz



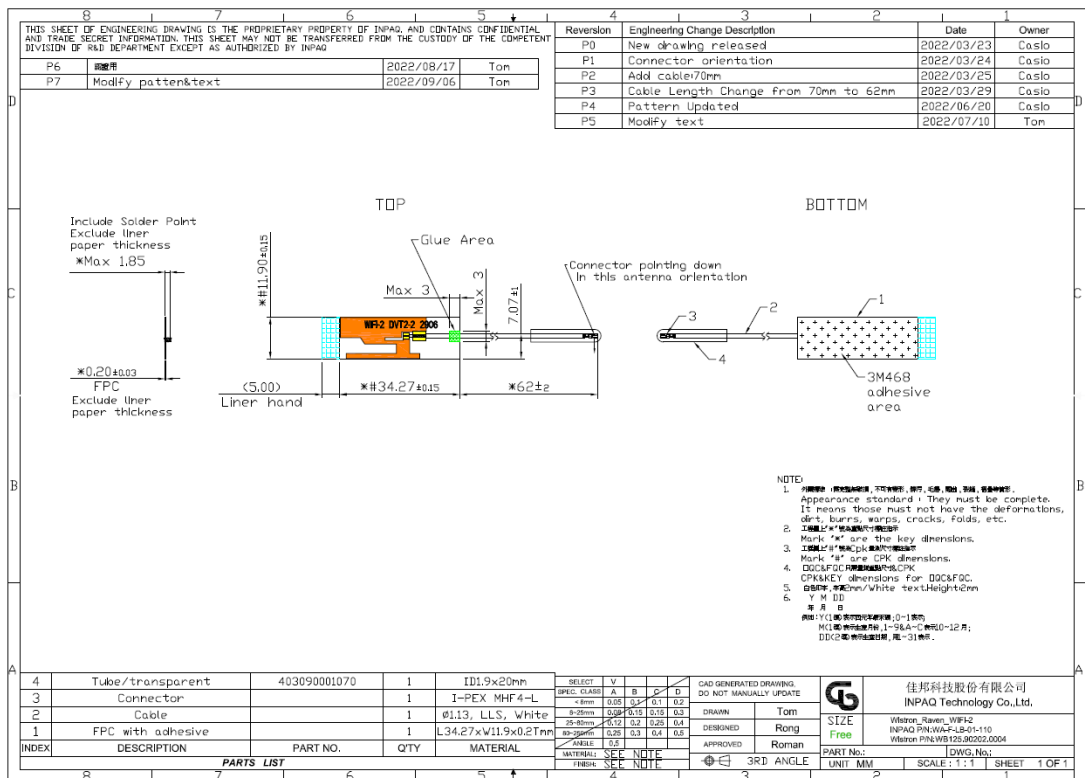
5500MHz



WI-FI1 Antenna drawing:



WI-FI2/BT Antenna drawing:



Test Equipment:

Site Description	Chamber Manufacturer	Type
Wistron OTA1	ETS-8500	Fully Anechoic
Software Version	V1.15	
Site location	No. 18, Section 2, Xiwan Road, Xizhi District, New Taipei City, Taiwan	
Test Engineer	Denny Hu	
Test Date	2022/10/19	

Equipment Description	Manufacturer	Model	Calibration Date	Due Date
Network Analyzer	Agilent	E5071C	2022.07.22	2023.07.21

Passive – Agilent E5071C



Chamber – ETS8500

