

#01_WLAN2.4GHz_802.11b 1Mbps_Edge 3_0mm_Ch1;Ant 1+2

Communication System: 802.11b ; Frequency: 2412.0 MHz; Duty Cycle: 1:1
Medium: HSL_2450_220928 Medium parameters used: $f= 2412.0$ MHz; $\sigma= 1.77$ S/m; $\epsilon_r = 38.4$
Ambient Temperature: 23.5°C; Liquid Temperature: 22.5°C

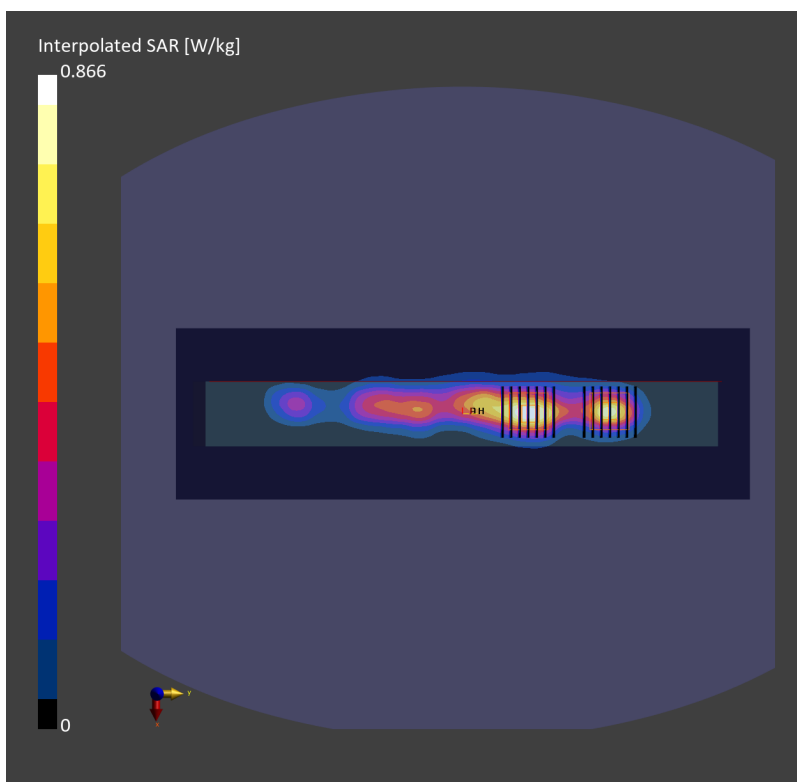
DASY6 Configuration:

- Probe: EX3DV4 - SN3931; ConvF(7.52, 7.52, 7.52); Calibrated: 2021-10-21
- Sensor-Surface: 1.4 mm
- Electronics: DAE4 Sn853; Calibrated: 2022-07-20
- Phantom: ELI V8.0 (20deg probe tilt); Serial: 2153; Section: Flat
- Measurement Software: 16.2.0.1425
- UID: WLAN, 10012-CAB

Area Scan (100.0 mm x 336.0 mm): Measurement Grid: 10.0 mm x 12.0 mm
SAR (1g) = 0.668 W/kg; SAR (10g) = 0.328 W/kg;

Zoom Scan (30.0 mm x 30.0 mm x 30.0 mm): Measurement Grid: 5.0 mm x 5.0 mm x 1.5 mm
Power Drift = 0.08 dB
SAR (1g) = 0.605 W/kg; SAR (8g) = 0.299 W/kg; SAR (10g) = 0.269 W/kg
psAPD (1.0cm², sq) = n/a [W/m²]; psAPD (4.0cm², sq) = n/a [W/m²]

Zoom Scan (30.0 mm x 30.0 mm x 30.0 mm): Measurement Grid: 5.0 mm x 5.0 mm x 1.5 mm
Power Drift = 0.08 dB
SAR (1g) = 0.667 W/kg; SAR (8g) = 0.356 W/kg; SAR (10g) = 0.325 W/kg
psAPD (1.0cm², sq) = n/a [W/m²]; psAPD (4.0cm², sq) = n/a [W/m²]



#02_WLAN5GHz_802.11a 6Mbps_Edge 3_0mm_Ch56;Ant 2

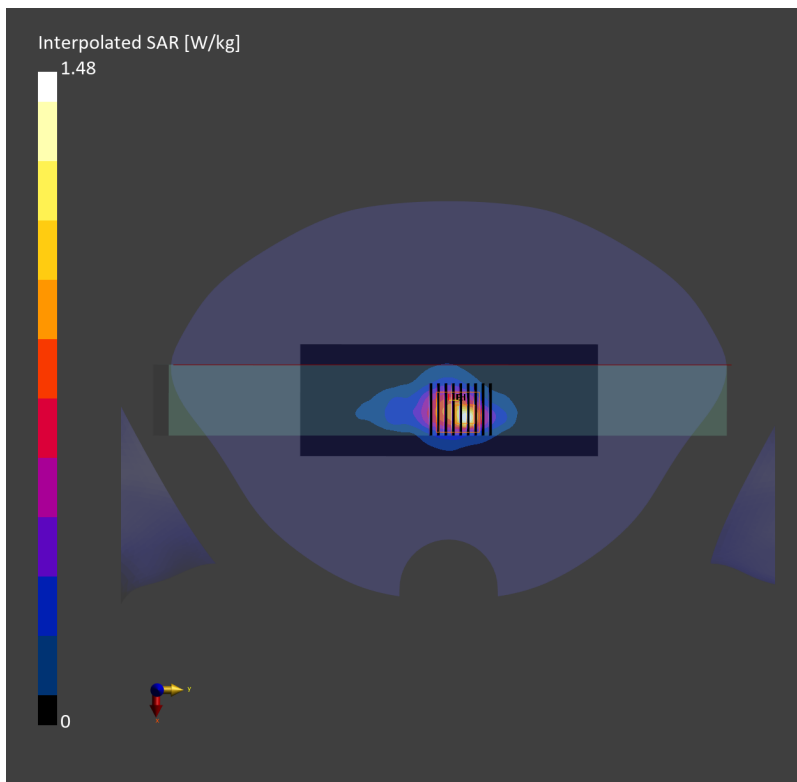
Communication System: 802.11a; Frequency: 5280.0 MHz; Duty Cycle: 1:1
Medium: HSL_5G_220923 Medium parameters used: $f= 5280.0$ MHz; $\sigma= 4.65$ S/m; $\epsilon_r = 35.4$
Ambient Temperature: 23.5°C; Liquid Temperature: 22.5°C

DASY6 Configuration:

- Probe: EX3DV4 - SN7590; ConvF(5.5, 5.5, 5.5); Calibrated: 2022-03-28
- Sensor-Surface: 1.4 mm
- Electronics: DAE4 Sn1696; Calibrated: 2021-11-03
- Phantom: Twin-SAM V8.0 (30deg probe tilt); Serial: 1919; Section: Flat
- Measurement Software: 16.2.0.1425
- UID: WLAN, 10062-CAD

Area Scan (60.0 mm x 160.0 mm): Measurement Grid: 10.0 mm x 10.0 mm
SAR (1g) = 0.927 W/kg; SAR (10g) = 0.315 W/kg;

Zoom Scan (22.0 mm x 22.0 mm x 22.0 mm): Measurement Grid: 4.0 mm x 4.0 mm x 1.4 mm
Power Drift = -0.00 dB
SAR (1g) = 0.985 W/kg; SAR (8g) = 0.355 W/kg; SAR (10g) = 0.313 W/kg
psAPD (1.0cm², sq) = n/a [W/m²]; psAPD (4.0cm², sq) = n/a [W/m²]



#03_WLAN5GHz_802.11a 6Mbps_Edge 3_0mm_Ch100;Ant 1

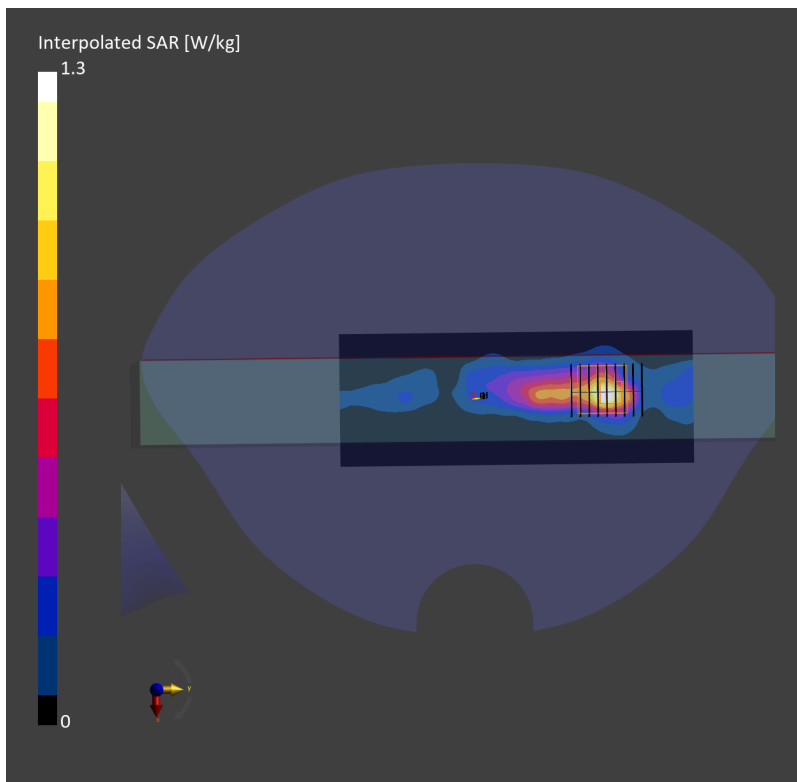
Communication System: 802.11a; Frequency: 5500.0 MHz; Duty Cycle: 1:1
Medium: HSL_5G_220924 Medium parameters used: $f= 5500.0$ MHz; $\sigma= 4.90$ S/m; $\epsilon_r = 35.0$
Ambient Temperature: 23.5°C; Liquid Temperature: 22.5°C

DASY6 Configuration:

- Probe: EX3DV4 - SN7590; ConvF(4.98, 4.98, 4.98); Calibrated: 2022-03-28
- Sensor-Surface: 1.4 mm
- Electronics: DAE4 Sn1696; Calibrated: 2021-11-03
- Phantom: Twin-SAM V8.0 (30deg probe tilt); Serial: 1919; Section: Flat
- Measurement Software: 16.2.0.1425
- UID: WLAN, 10062-CAD

Area Scan (60.0 mm x 160.0 mm): Measurement Grid: 10.0 mm x 10.0 mm
SAR (1g) = 0.873 W/kg; SAR (10g) = 0.284 W/kg;

Zoom Scan (22.0 mm x 22.0 mm x 22.0 mm): Measurement Grid: 4.0 mm x 4.0 mm x 1.4 mm
Power Drift = -0.03 dB
SAR (1g) = 0.996 W/kg; SAR (8g) = 0.337 W/kg; SAR (10g) = 0.296 W/kg
psAPD (1.0cm², sq) = n/a [W/m²]; psAPD (4.0cm², sq) = n/a [W/m²]



#04_WLAN5GHz_802.11a 6Mbps_Edge 3_0mm_Ch165;Ant 2

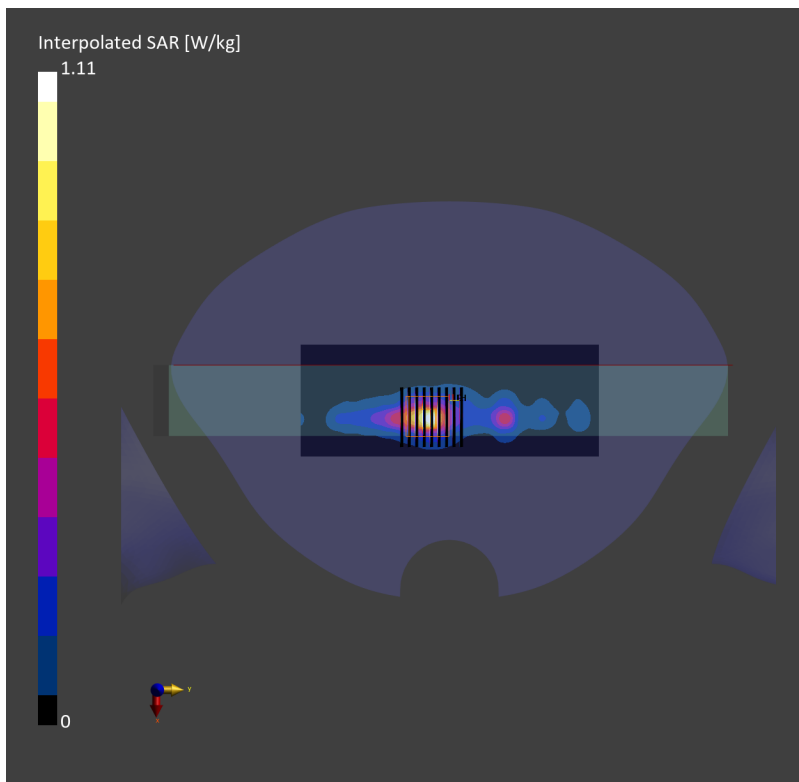
Communication System: 802.11a; Frequency: 5825.0 MHz; Duty Cycle: 1:1
Medium: HSL_5G_220924 Medium parameters used: $f= 5825.0$ MHz; $\sigma= 5.29$ S/m; $\epsilon_r = 34.5$
Ambient Temperature: 23.5°C; Liquid Temperature: 22.5°C

DASY6 Configuration:

- Probe: EX3DV4 - SN7590; ConvF(5.23, 5.23, 5.23); Calibrated: 2022-03-28
- Sensor-Surface: 1.4 mm
- Electronics: DAE4 Sn1696; Calibrated: 2021-11-03
- Phantom: Twin-SAM V8.0 (30deg probe tilt); Serial: 1919; Section: Flat
- Measurement Software: 16.2.0.1425
- UID: WLAN, 10062-CAD

Area Scan (60.0 mm x 160.0 mm): Measurement Grid: 10.0 mm x 10.0 mm
SAR (1g) = 0.709 W/kg; SAR (10g) = 0.215 W/kg;

Zoom Scan (22.0 mm x 22.0 mm x 22.0 mm): Measurement Grid: 4.0 mm x 4.0 mm x 1.4 mm
Power Drift = -0.09 dB
SAR (1g) = 0.743 W/kg; SAR (8g) = 0.256 W/kg; SAR (10g) = 0.222 W/kg
psAPD (1.0cm², sq) = n/a [W/m²]; psAPD (4.0cm², sq) = n/a [W/m²]



#05_Bluetooth_1Mbps_Edge 3_0mm_Ch0;Ant 1

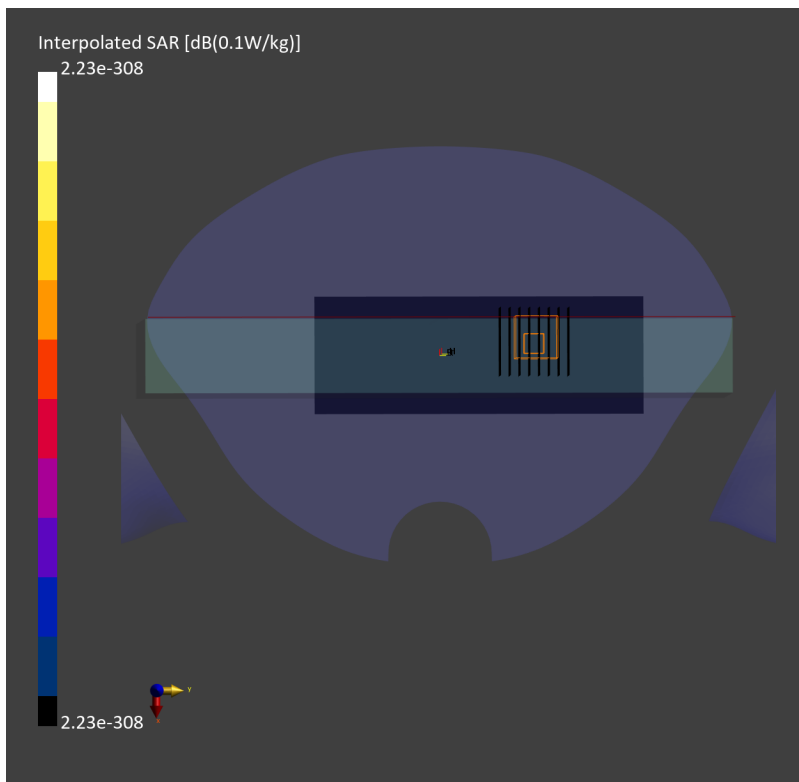
Communication System: Bluetooth; Frequency: 2402.0 MHz; Duty Cycle: 1:1.291
Medium: HSL_2450_220923 Medium parameters used: $f=2402.0$ MHz; $\sigma=1.70$ S/m; $\epsilon_r=38.5$
Ambient Temperature: 23.5°C; Liquid Temperature: 22.5°C

DASY6 Configuration:

- Probe: EX3DV4 - SN7590; ConvF(7.82, 7.82, 7.82); Calibrated: 2022-03-28
- Sensor-Surface: 1.4 mm
- Electronics: DAE4 Sn1696; Calibrated: 2021-11-03
- Phantom: Twin-SAM V8.0 (30deg probe tilt); Serial: 1919; Section: Flat
- Measurement Software: 16.2.0.1425
- UID: Bluetooth, 10030-CAA

Area Scan (60.0 mm x 168.0 mm): Measurement Grid: 10.0 mm x 12.0 mm
SAR (1g) = 0.004 W/kg; SAR (10g) = 0.002 W/kg;

Zoom Scan (30.0 mm x 30.0 mm x 30.0 mm): Measurement Grid: 5.0 mm x 5.0 mm x 1.5 mm
Power Drift = 0.02 dB
SAR (1g) = 0.005 W/kg; SAR (8g) = 0.004 W/kg; SAR (10g) = 0.004 W/kg
psAPD (1.0cm², sq) = n/a [W/m²]; psAPD (4.0cm², sq) = n/a [W/m²]



#06_WLAN2.4GHz_802.11b 1Mbps_Front Face_0mm_Ch11;Ant 2

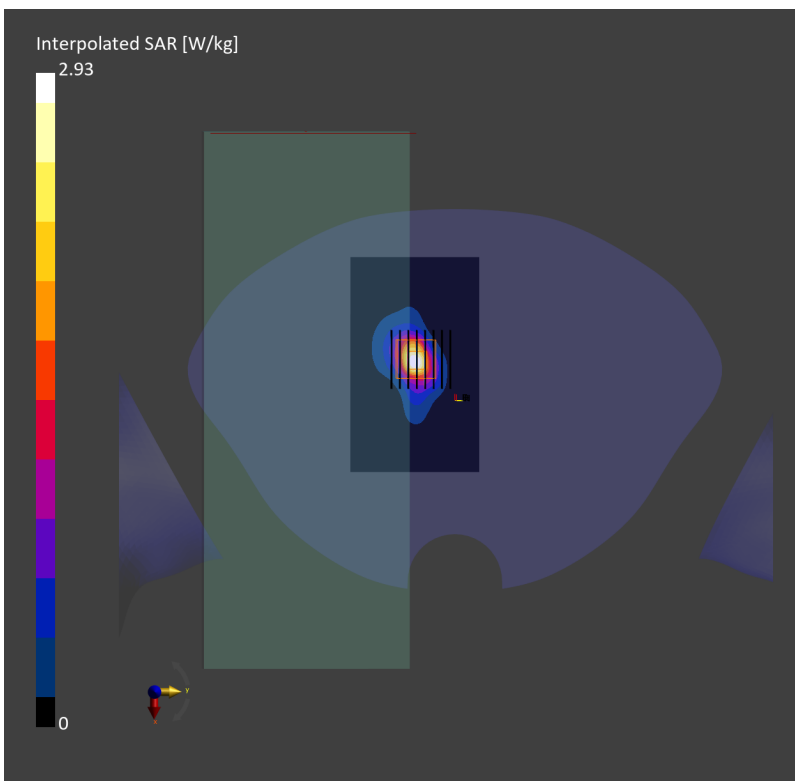
Communication System: 802.11b ; Frequency: 2462.0 MHz; DutyCycle: 1:1
Medium: HSL_2450_220923 Medium parameters used: $f = 2462.0$ MHz; $\sigma = 1.77$ S/m; $\epsilon_r = 38.3$
Ambient Temperature: 23.5°C; Liquid Temperature: 22.5°C

DASY6 Configuration:

- Probe: EX3DV4 - SN7590; ConvF(7.82, 7.82, 7.82); Calibrated: 2022-03-28
- Sensor-Surface: 1.4 mm
- Electronics: DAE4 Sn1696; Calibrated: 2021-11-03
- Phantom: Twin-SAM V8.0 (30deg probe tilt); Serial: 1919; Section: Flat
- Measurement Software: 16.2.0.1425
- UID: WLAN, 10012-CAB

Area Scan (120.0 mm x 72.0 mm): Measurement Grid: 10.0 mm x 12.0 mm
SAR (1g) = 0.961 W/kg; SAR (10g) = 0.392 W/kg;

Zoom Scan (30.0 mm x 30.0 mm x 30.0 mm): Measurement Grid: 5.0 mm x 5.0 mm x 1.5 mm
Power Drift = 0.08 dB
SAR (1g) = 1.03 W/kg; SAR (8g) = 0.433 W/kg; SAR (10g) = 0.384 W/kg
psAPD (1.0cm², sq) = n/a [W/m²]; psAPD (4.0cm², sq) = n/a [W/m²]



#07_WLAN5GHz_802.11a 6Mbps_Front Face_0mm_Ch64;Ant 1

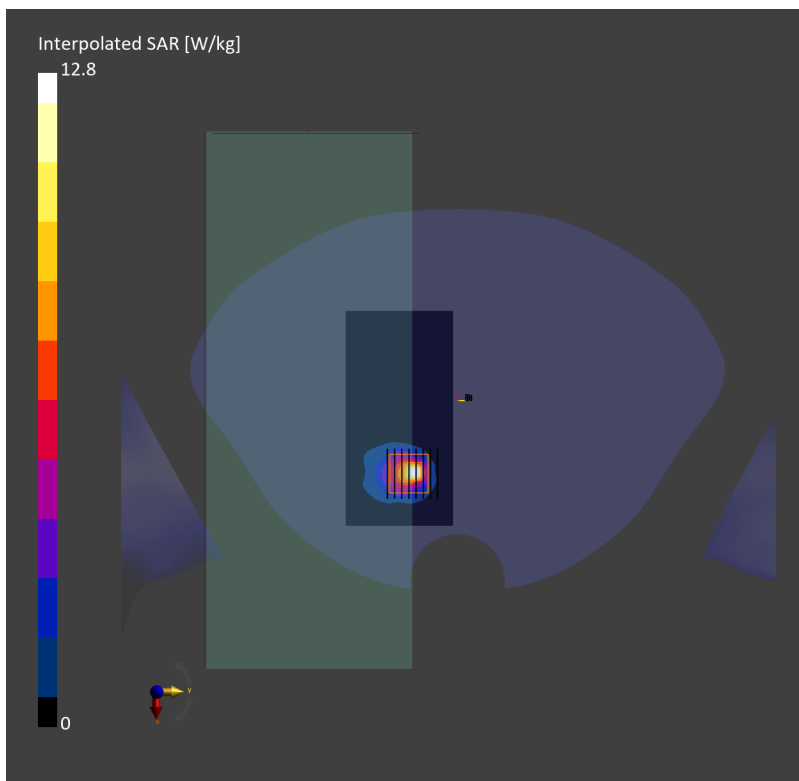
Communication System: 802.11a; Frequency: 5320.0 MHz; DutyCycle: 1:1
Medium: HSL_5G_220923 Medium parameters used: $f= 5320.0$ MHz; $\sigma= 4.70$ S/m; $\epsilon_r = 35.3$
Ambient Temperature: 23.5°C; Liquid Temperature: 22.5°C

DASY6 Configuration:

- Probe: EX3DV4 - SN7590; ConvF(5.5, 5.5, 5.5); Calibrated: 2022-03-28
- Sensor-Surface: 1.4 mm
- Electronics: DAE4 Sn1696; Calibrated: 2021-11-03
- Phantom: Twin-SAM V8.0 (30deg probe tilt); Serial: 1919; Section: Flat
- Measurement Software: 16.2.0.1425
- UID: WLAN, 10062-CAD

Area Scan (120.0 mm x 60.0 mm): Measurement Grid: 10.0 mm x 10.0 mm
SAR (1g) = 2.79 W/kg; SAR (10g) = 0.856 W/kg;

Zoom Scan (22.0 mm x 22.0 mm x 22.0 mm): Measurement Grid: 4.0 mm x 4.0 mm x 1.4 mm
Power Drift = 0.01 dB
SAR (1g) = 3.17 W/kg; SAR (8g) = 1.09 W/kg; SAR (10g) = 0.941 W/kg
psAPD (1.0cm², sq) = n/a [W/m²]; psAPD (4.0cm², sq) = n/a [W/m²]



#08_WLAN5GHz_802.11a 6Mbps_Front Face_0mm_Ch100;Ant 1

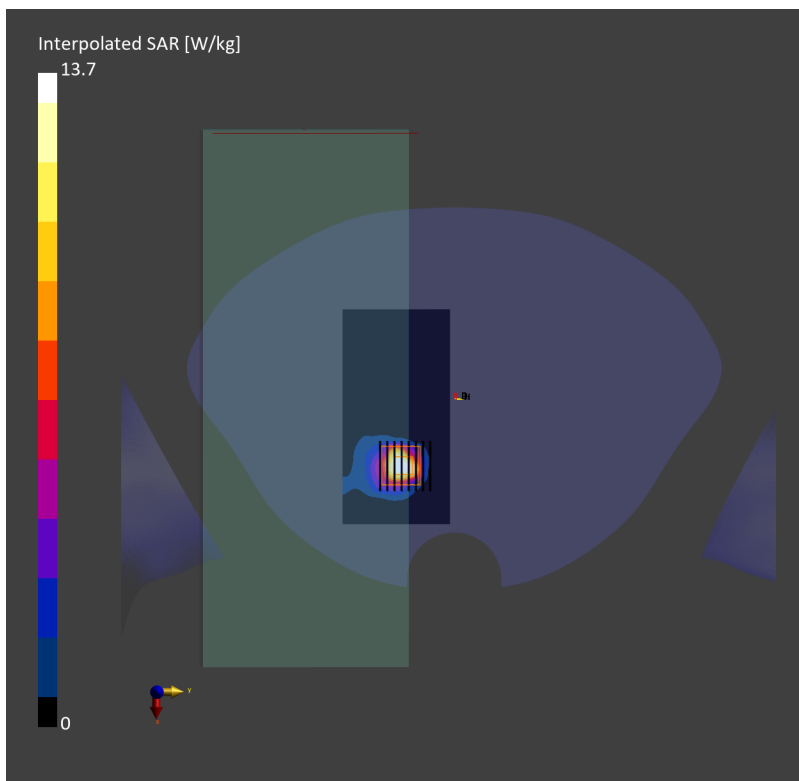
Communication System: 802.11a; Frequency: 5500.0 MHz; DutyCycle: 1:1
Medium: HSL_5G_220924 Medium parameters used: $f= 5500.0$ MHz; $\sigma= 4.90$ S/m; $\epsilon_r = 35.0$
Ambient Temperature: 23.5°C; Liquid Temperature: 22.5°C

DASY6 Configuration:

- Probe: EX3DV4 - SN7590; ConvF(4.98, 4.98, 4.98); Calibrated: 2022-03-28
- Sensor-Surface: 1.4 mm
- Electronics: DAE4 Sn1696; Calibrated: 2021-11-03
- Phantom: Twin-SAM V8.0 (30deg probe tilt); Serial: 1919; Section: Flat
- Measurement Software: 16.2.0.1425
- UID: WLAN, 10062-CAD

Area Scan (120.0 mm x 60.0 mm): Measurement Grid: 10.0 mm x 10.0 mm
SAR (1g) = 2.72 W/kg; SAR (10g) = 0.885 W/kg;

Zoom Scan (22.0 mm x 22.0 mm x 22.0 mm): Measurement Grid: 4.0 mm x 4.0 mm x 1.4 mm
Power Drift = -0.04 dB
SAR (1g) = 3.29 W/kg; SAR (8g) = 1.11 W/kg; SAR (10g) = 0.958 W/kg
psAPD (1.0cm², sq) = n/a [W/m²]; psAPD (4.0cm², sq) = n/a [W/m²]



#09_WLAN5GHz_802.11a 6Mbps_Front Face_0mm_Ch165;Ant 2

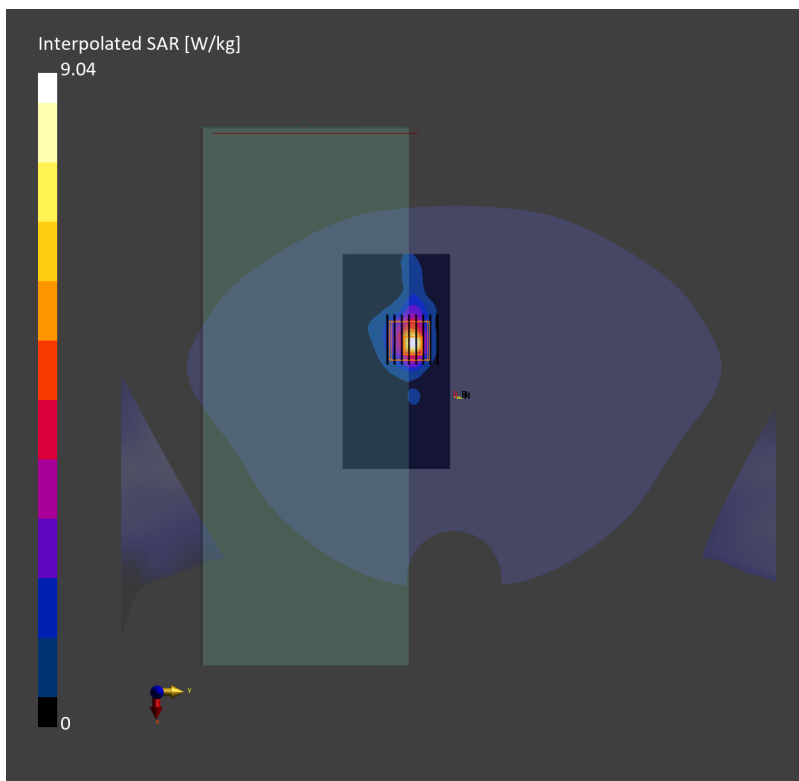
Communication System: 802.11a; Frequency: 5825.0 MHz; DutyCycle: 1:1
Medium: HSL_5G_220924 Medium parameters used: $f= 5825.0$ MHz; $\sigma= 5.29$ S/m; $\epsilon_r = 34.5$
Ambient Temperature: 23.5°C; Liquid Temperature: 22.5°C

DASY6 Configuration:

- Probe: EX3DV4 - SN7590; ConvF(5.23, 5.23, 5.23); Calibrated: 2022-03-28
- Sensor-Surface: 1.4 mm
- Electronics: DAE4 Sn1696; Calibrated: 2021-11-03
- Phantom: Twin-SAM V8.0 (30deg probe tilt); Serial: 1919; Section: Flat
- Measurement Software: 16.2.0.1425
- UID: WLAN, 10062-CAD

Area Scan (120.0 mm x 60.0 mm): Measurement Grid: 10.0 mm x 10.0 mm
SAR (1g) = 1.75 W/kg; SAR (10g) = 0.518 W/kg;

Zoom Scan (22.0 mm x 22.0 mm x 22.0 mm): Measurement Grid: 4.0 mm x 4.0 mm x 1.4 mm
Power Drift = -0.05 dB
SAR (1g) = 1.81 W/kg; SAR (8g) = 0.606 W/kg; SAR (10g) = 0.527 W/kg
psAPD (1.0cm², sq) = n/a [W/m²]; psAPD (4.0cm², sq) = n/a [W/m²]



#10_Bluetooth_1Mbps_Front Face_0mm_Ch0;Ant 1

Communication System: Bluetooth; Frequency: 2402.0 MHz; Duty Cycle: 1:1.291
Medium: HSL_2450_220923 Medium parameters used: $f = 2402.0$ MHz; $\sigma = 1.70$ S/m; $\epsilon_r = 38.5$
Ambient Temperature: 23.5°C; Liquid Temperature: 22.5°C

DASY6 Configuration:

- Probe: EX3DV4 - SN7590; ConvF(7.82, 7.82, 7.82); Calibrated: 2022-03-28
- Sensor-Surface: 1.4 mm
- Electronics: DAE4 Sn1696; Calibrated: 2021-11-03
- Phantom: Twin-SAM V8.0 (30deg probe tilt); Serial: 1919; Section: Flat
- Measurement Software: 16.2.0.1425
- UID: Bluetooth, 10030-CAA

Area Scan (120.0 mm x 72.0 mm): Measurement Grid: 10.0 mm x 12.0 mm
SAR (1g) = 0.005 W/kg; SAR (10g) = 0.003 W/kg;

Zoom Scan (30.0 mm x 30.0 mm x 30.0 mm): Measurement Grid: 5.0 mm x 5.0 mm x 1.5 mm
Power Drift = -0.01 dB
SAR (1g) = 0.005 W/kg; SAR (8g) = 0.003 W/kg; SAR (10g) = 0.003 W/kg
psAPD (1.0cm², sq) = n/a [W/m²]; psAPD (4.0cm², sq) = n/a [W/m²]

