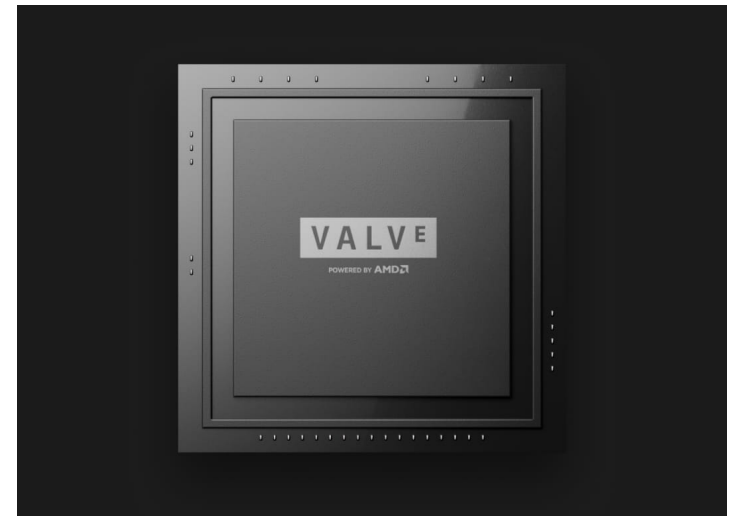


Steam Deck™ is the most powerful, full-featured gaming handheld in the world.

We partnered with AMD to create Steam Deck's custom APU, optimized for handheld gaming. It is a Zen 2 + RDNA 2 powerhouse, delivering more than enough performance to run the latest AAA games in a very efficient power envelope.



Real gamepad controls



Triggers

Analog triggers provide a full range of input for the best experience—especially in driving games.



7" touchscreen

Type and swipe through the Steam UI with Deck's capacitive multi-touch display.



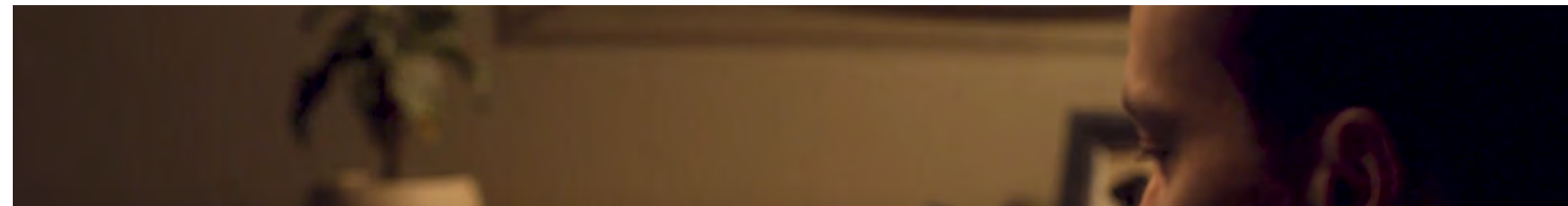
Trackpads

Play PC games that were never designed to be handheld. With increased precision and customizability, trackpads also give you a competitive edge when playing fast paced FPS games.



Gyro

With an IMU and capacitive touch thumbsticks on-board, Deck helps you aim better. By physically positioning the device you can achieve more precision than using a thumbstick or trackpad alone.





Everything you need

Fast storage

Hi-Fi audio

40Wh battery

Steam Deck's stereo speakers pack a punch. An embedded DSP provides

Steam Deck's onboard 40 watt-hour battery provides several hours of play



looking for more space, augment your built-in storage with a microSD card and fill it up with even more games.

your favorite headset, or use the onboard dual microphones to chat with your friends.

games, or web browsing, you can expect to get the maximum battery life of approximately 7-8 hours.

Expandable I/O

The single USB-C jack is multi-purpose: used for charging, peripherals, or even throwing the game onto a big screen at the same time. Any USB-C hub can be used to expand your options, or get our official dock when it is released. More info on the dock below.

Wireless

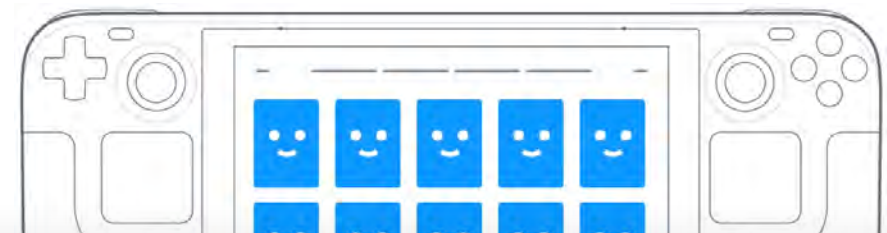
WiFi keeps you connected to the world, and Bluetooth allows for a wide variety of wireless peripherals - from controllers to headsets, keyboards, and mice.

Fast Suspend / Resume

We've built a quick suspend / resume feature into SteamOS. Press the power button, and Steam Deck will suspend your game and go into sleep mode. Push the power button again and it will wake up right where you left off.

[Tech specs](#)

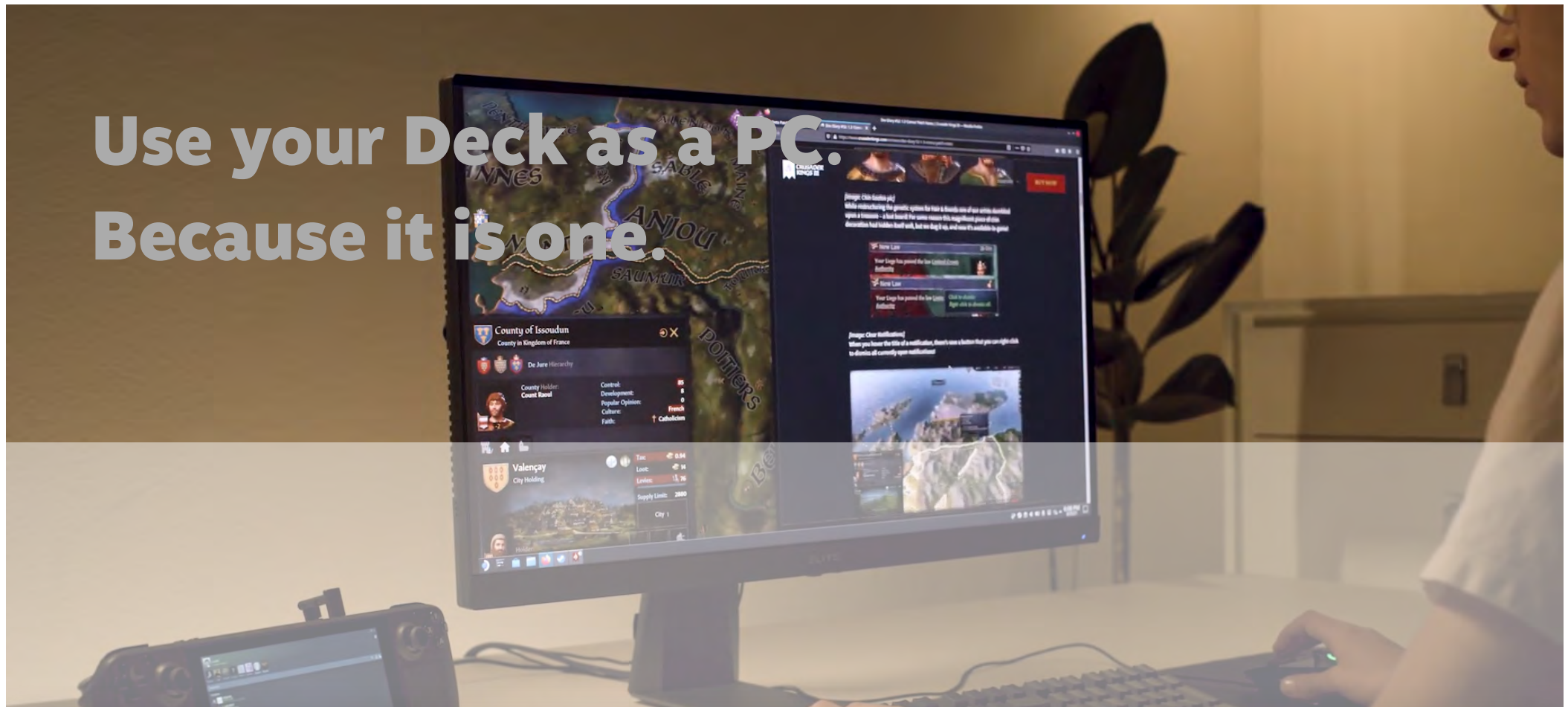
Expand your Library with a

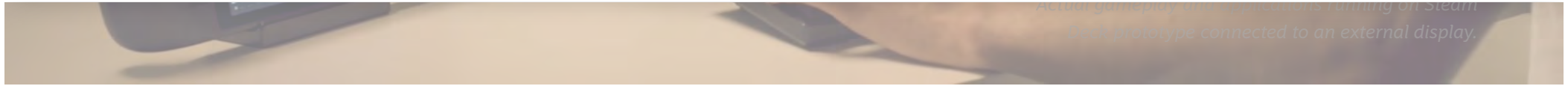




All models of Steam Deck support expanding your storage via microSD cards. Games stored on a microSD card will appear in your library instantly.

Use your Deck as a PC.
Because it is one.





You can also install and use PC software, of course. Browse the web, watch streaming video, do your normal productivity stuff, install some other game stores, whatever.



Plays nice with all your accessories



Deck can be plugged in to your TV



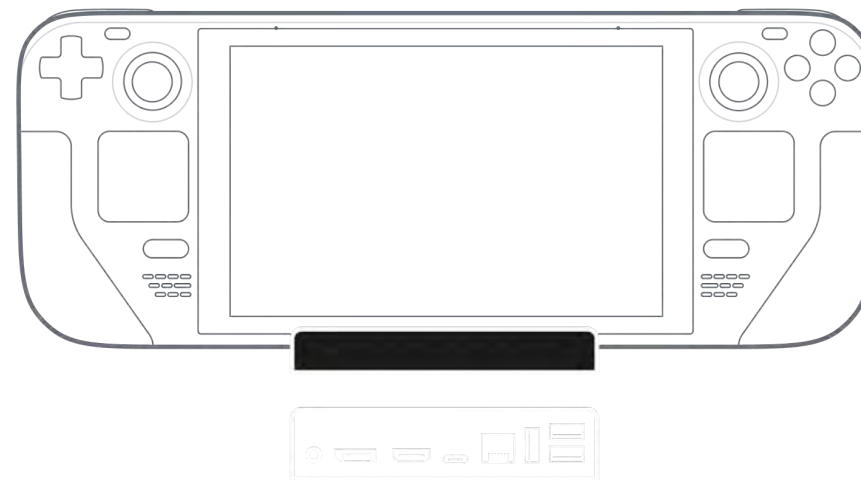
Covered. Want to pair your favorite Bluetooth headphones?
You're good to go.

peripherals, or use the official dock, and you're ready to go.

There's a dock, too.

The official dock props up your Steam Deck while connecting to external displays, wired networking, USB peripherals, and power. You can also use a powered USB-C hub, if you've got one lying around.

The official dock will be sold separately. More information coming soon.



[See Deck's tech specs](#)



Actual gameplay running on prototype hardware

Add Deck to your

[Add to your Wishlist](#)



Steam Deck starts shipping December 2021 to the United States, Canada, European Union, and the United Kingdom. More regions coming in 2022—stay tuned for more info.



- [About Us](#)
- [Jobs](#)
- [Steam Partners](#)
- [Publications](#)
- [Steam](#)
- [Terms of Use](#)
- [Privacy Policy](#)
- [Security](#)
- [Legal](#)

Product specifications are subject to change.

© 2021 Valve Corporation. All rights reserved. All trademarks property of their respective owners in the U.S. and other countries. Steam, the Steam logo, Steam Deck, and the Steam Deck logo are trademarks and/or registered trademarks of Valve Corporation in the U.S. and/or other countries.