



(Realtek RTL8822C)

## Combo NGFF Type1216 Module User's Manual

Preliminary Version

2020/01/14



**REALTEK**

**Realtek Semiconductor Corp.**

No. 2, Innovation Road II, Hsinchu Science Park, Hsinchu 300, Taiwan

Tel.: +886-3-578-0211. Fax: +886-3-577-6047

[www.realtek.com](http://www.realtek.com)

---

**CONTENT**

**ENVIRONMENTAL** ..... 3

OPERATING ..... 3

STORAGE..... 3

MTBF CALCULATION ..... 3

**WARNING** ..... 4

    Federal Communication Commission Interference Statement ..... 4

INDUSTRY CANADA STATEMENT ..... 8

    NCC 警語 ..... 8

## ENVIRONMENTAL

### Operating

Operating Temperature: 0°C to +70 °C  
Relative Humidity: 5-90% (non-condensing)

### Storage

Temperature: -40°C to +80°C (non-operating)  
Relevant Humidity: 5-95% (non-condensing)

### MTBF caculation

Over 150,000hours

## Warning

### Federal Communication Commission Interference Statement

This device complies with Part 15 of the FCC Rules. Operation is subject to the following two conditions: (1) This device may not cause harmful interference, and (2) this device must accept any interference received, including interference that may cause undesired operation.

This equipment has been tested and found to comply with the limits for a Class B digital device, pursuant to Part 15 of the FCC Rules. These limits are designed to provide reasonable protection against harmful interference in a residential installation. This equipment generates, uses and can radiate radio frequency energy and, if not installed and used in accordance with the instructions, may cause harmful interference to radio communications. However, there is no guarantee that interference will not occur in a particular installation. If this equipment does cause harmful interference to radio or television reception, which can be determined by turning the equipment off and on, the user is encouraged to try to correct the interference by one of the following measures:

- Reorient or relocate the receiving antenna.
- Increase the separation between the equipment and receiver.
- Connect the equipment into an outlet on a circuit different from that to which the receiver is connected.
- Consult the dealer or an experienced radio/TV technician for help.

FCC Caution: Any changes or modifications not expressly approved by the party responsible for compliance could void the user's authority to operate this equipment.

This transmitter must not be co-located or operating in conjunction with any other antenna or transmitter.

Operations in the 5.15-5.25GHz band are restricted to indoor usage only.

---

This device meets all the other requirements specified in Part 15E, Section 15.407 of the FCC Rules.

### **Radiation Exposure Statement: (Mobile)**

This equipment complies with FCC radiation exposure limits set forth for an uncontrolled environment. This equipment should be installed and operated with minimum distance 20cm between the radiator & your body.

**This module is intended for OEM integrators only. Per FCC KDB 996369 D03 OEM Manual v01 guidance, the following conditions must be strictly followed when using this certified module:**

### **KDB 996369 D03 OEM Manual v01 rule sections:**

#### 2.2 List of applicable FCC rules

This module has been tested for compliance to FCC Part 15

#### 2.3 Summarize the specific operational use conditions

The module is tested for standalone mobile RF exposure use condition. Any other usage conditions such as co-location with other transmitter(s) or being used in a portable condition will need a separate reassessment through a class II permissive change application or new certification.

#### 2.4 Limited module procedures

Not applicable.

#### 2.5 Trace antenna designs

Not applicable.

#### 2.6 RF exposure considerations

This equipment complies with FCC mobile radiation exposure limits set

## RTL8822C User's Manual

forth for an uncontrolled environment. This equipment should be installed and operated with a minimum distance of 20cm between the radiator & your body. If the module is installed in a portable host, a separate SAR evaluation is required to confirm compliance with relevant FCC portable RF exposure rules.

### 2.7 Antennas

The following antennas have been certified for use with this module; antennas of the same type with equal or lower gain may also be used with this module. The antenna must be installed such that 20 cm can be maintained between the antenna and users.

#### Approved antenna(s) list :(Mobile)

Antenna Set	Chain NO.	Brand	Model	Antenna Gain (dBi)	Frequency range (GHz)	Antenna Type	Connector Type
1	Chain 0	LYNwave	ALA110-222050-300011	3.5	2.4~2.5	PIFA	i-pex(MHF)
				5	5.15~5.85		
	Chain 1	LYNwave	ALA110-222050-300011	3.5	2.4~2.5	PIFA	i-pex(MHF)
				5	5.15~5.85		
2	Chain 0	PSA	RFDPA171320EMLB301	3.14	2.4~2.5	Dipole	i-pex(MHF)
				5	5.15~5.85		
	Chain 1	PSA	RFDPA171320EMLB301	3.14	2.4~2.5	Dipole	i-pex(MHF)
				5	5.15~5.85		

#### For SAR :(Portable)

Brand	Model	Antenna Gain (dBi)	Frequency range (GHz)	Antenna Type	Connector Type
REALTEK	RTK-ANT-0006	3.5	2.4~2.5	PIFA	i-pex(MHF)
		5	5.15~5.85		

### 2.8 Label and compliance information

The final end product must be labeled in a visible area with the following: “Contains FCC ID: TX2-RTL8822C”. The grantee's FCC ID can be used only when all FCC compliance requirements are met.

### 2.9 Information on test modes and additional testing requirements

This transmitter is tested in a standalone mobile RF exposure condition and any co-located or simultaneous transmission with other transmitter(s) or portable use will require a separate class II permissive change re-evaluation or new certification.

### 2.10 Additional testing, Part 15 Subpart B disclaimer

This transmitter module is tested as a subsystem and its certification does not cover the FCC Part 15 Subpart B (unintentional radiator) rule requirement applicable to the final host. The final host will still need to be reassessed for compliance to this portion of rule requirements if applicable.

As long as all conditions above are met, further transmitter test will not be required. However, the OEM integrator is still responsible for testing their end-product for any additional compliance requirements required with this module installed.

**IMPORTANT NOTE:** In the event that these conditions can not be met (for example certain laptop configurations or co-location with another transmitter), then the FCC authorization is no longer considered valid and the FCC ID can not be used on the final product. In these circumstances, the OEM integrator will be responsible for re-evaluating the end product (including the transmitter) and obtaining a separate FCC authorization.

### **Manual Information To the End User**

The OEM integrator has to be aware not to provide information to the end user regarding how to install or remove this RF module in the user's manual of the end product which integrates this module.

The end user manual shall include all required regulatory information/warning as show in this manual.

### **OEM/Host manufacturer responsibilities**

OEM/Host manufacturers are ultimately responsible for the compliance of the Host and Module. The final product must be reassessed against all the essential requirements of the FCC rule such as FCC Part 15 Subpart B before it can be placed on the US market. This includes reassessing the transmitter module for compliance with the Radio and EMF essential requirements of the FCC rules. This module must not be incorporated into any other device or

system without retesting for compliance as multi-radio and combined equipment

### **Industry Canada statement:**

This device complies with ISED's licence-exempt RSSs. Operation is subject to the following two conditions: (1) This device may not cause harmful interference, and (2) this device must accept any interference received, including interference that may cause undesired operation.

Le présent appareil est conforme aux CNR d'ISED applicables aux appareils radio exempts de licence. L'exploitation est autorisée aux deux conditions suivantes : (1) le dispositif ne doit pas produire de brouillage préjudiciable, et (2) ce dispositif doit accepter tout brouillage reçu, y compris un brouillage susceptible de provoquer un fonctionnement indésirable.

### **Radiation Exposure Statement: (Mobile)**

This equipment complies with ISED radiation exposure limits set forth for an uncontrolled environment. This equipment should be installed and operated with greater than 20cm between the radiator & your body.

### **Déclaration d'exposition aux radiations:**

Cet équipement est conforme aux limites d'exposition aux rayonnements ISED



## RTL8822C User's Manual

---

établies pour un environnement non contrôlé. Cet équipement doit être installé et utilisé à plus de 20 cm entre le radiateur et votre corps.

**This device is intended only for OEM integrators under the following conditions: (For module device use)**

- 1) The antenna must be installed and operated with greater than 20cm between the antenna and users, and
- 2) The transmitter module may not be co-located with any other transmitter or antenna.

As long as **2** conditions above are met, further transmitter test will not be required. However, the OEM integrator is still responsible for testing their end-product for any additional compliance requirements required with this module installed.

**Cet appareil est conçu uniquement pour les intégrateurs OEM dans les conditions suivantes: (Pour utilisation de dispositif module)**

- 1) L'antenne doit être installé et exploité avec plus de 20 cm entre l'antenne et les utilisateurs, et
- 2) Le module émetteur peut ne pas être coimplanté avec un autre émetteur ou antenne.

Tant que les **2** conditions ci-dessus sont remplies, des essais supplémentaires sur l'émetteur ne seront pas nécessaires. Toutefois, l'intégrateur OEM est toujours responsable des essais sur son produit final pour toutes exigences de conformité supplémentaires requis pour ce module installé.

**IMPORTANT NOTE:**

In the event that these conditions can not be met (for example certain laptop configurations or co-location with another transmitter), then the Canada authorization is no longer considered valid and the IC ID can not be used on the final product. In these circumstances, the OEM integrator will be responsible for re-evaluating the end product (including the transmitter) and obtaining a separate Canada authorization.

**NOTE IMPORTANTE:**

Dans le cas où ces conditions ne peuvent être satisfaites (par exemple pour certaines configurations d'ordinateur portable ou de certaines co-localisation avec un autre émetteur), l'autorisation du Canada n'est plus considéré comme valide et l'ID IC ne peut pas être utilisé sur le produit final. Dans ces circonstances, l'intégrateur OEM sera chargé de réévaluer le produit final (y compris l'émetteur) et l'obtention d'une autorisation distincte au Canada.

### **End Product Labeling**

This transmitter module is authorized only for use in device where the antenna may be installed and operated with greater than 20cm between the antenna and users. The final end product must be labeled in a visible area with the following: "Contains IC: **6317A-RTL8822C**".

### **Plaque signalétique du produit final**

Ce module émetteur est autorisé uniquement pour une utilisation dans un appareil où l'antenne peut être installée et utilisée à plus de 20 cm entre l'antenne et les utilisateurs. Le produit final doit être étiqueté dans un endroit visible avec l'inscription suivante: "Contient des IC: **6317A-RTL8822C**".

### **End Product Labeling**

The product can be kept as far as possible from the user body or set the device to lower output power if such function is available. The final end product must be labeled in a visible area with the following: "Contains IC: **6317A-RTL8822C**".

### **Plaque signalétique du produit final**

L'appareil peut être conservé aussi loin que possible du corps de l'utilisateur ou que le dispositif est réglé sur la puissance de sortie la plus faible si une telle fonction est disponible. Le produit final doit être étiqueté dans un endroit visible avec l'inscription suivante: "Contient des IC: **6317A-RTL8822C**".

### **Manual Information To the End User**

The OEM integrator has to be aware not to provide information to the end user regarding how to install or remove this RF module in the user's manual of the end product which integrates this module.

The end user manual shall include all required regulatory information/warning as show in this manual.

### **Manuel d'information à l'utilisateur final**

L'intégrateur OEM doit être conscient de ne pas fournir des informations à l'utilisateur

final quant à la façon d'installer ou de supprimer ce module RF dans le manuel de l'utilisateur du produit final qui intègre ce module.

Le manuel de l'utilisateur final doit inclure toutes les informations réglementaires requises et avertissements comme indiqué dans ce manuel.

**Caution :**

- (i) the device for operation in the band 5150-5250 MHz is only for indoor use to reduce the potential for harmful interference to co-channel mobile satellite systems;
- (ii) for devices with detachable antenna(s), the maximum antenna gain permitted for devices in the bands 5250-5350 MHz and 5470-5725 MHz shall be such that the equipment still complies with the e.i.r.p. limit;
- (iii) for devices with detachable antenna(s), the maximum antenna gain permitted for devices in the band 5725-5850 MHz shall be such that the equipment still complies with the e.i.r.p. limits as appropriate;
- (iv) where applicable, antenna type(s), antenna models(s), and worst-case tilt angle(s) necessary to remain compliant with the e.i.r.p. elevation mask requirement set forth in section 6.2.2.3 shall be clearly indicated.

**Avertissement:**

Le guide d'utilisation des dispositifs pour réseaux locaux doit inclure des instructions précises sur les restrictions susmentionnées, notamment :

- (i) les dispositifs fonctionnant dans la bande 5150-5250 MHz sont réservés uniquement pour une utilisation à l'intérieur afin de réduire les risques de brouillage préjudiciable aux systèmes de satellites mobiles utilisant les mêmes canaux;
- (ii) pour les dispositifs munis d'antennes amovibles, le gain maximal d'antenne permis pour les dispositifs utilisant les bandes de 5 250 à 5 350 MHz et de 5 470 à 5 725 MHz doit être conforme à la limite de la p.i.r.e.;
- (iii) pour les dispositifs munis d'antennes amovibles, le gain maximal d'antenne permis (pour les dispositifs utilisant la bande de 5 725 à 5 850 MHz) doit être conforme à la limite de la p.i.r.e. spécifiée, selon le cas;
- (iv) lorsqu'il y a lieu, les types d'antennes (s'il y en a plusieurs), les numéros de

## RTL8822C User's Manual

modèle de l'antenne et les pires angles d'inclinaison nécessaires pour rester conforme à l'exigence de la p.i.r.e. applicable au masque d'élévation, énoncée à la section 6.2.2.3, doivent être clairement indiqués

### DETACHABLE ANTENNA USAGE

This radio transmitter (**IC: 6317A-RTL8822C / Model: RTL8822C**) has been approved by ISED to operate with the antenna type listed below with maximum permissible gain indicated. Antenna types not included in this list, having a gain greater than the maximum gain indicated for that type, are strictly prohibited for use with this device.

Le présent émetteur radio (**IC: 6317A-RTL8822C / Model: RTL8822C**) a été approuvé par ISED pour fonctionner avec les types d'antenne énumérés ci-dessous et ayant un gain admissible maximal. Les types d'antenne non inclus dans cette liste, et dont le gain est supérieur au gain maximal indiqué, sont strictement interdits pour l'exploitation de l'émetteur.

#### Approved antenna(s) list **(Mobile)**

Antenna Set	Chain NO.	Brand	Model	Antenna Gain (dBi)	Frequency range (GHz)	Antenna Type	Connector Type
1	Chain 0	LYNwave	ALA110-222050-300011	3.5	2.4~2.5	PIFA	i-pex(MHF)
				5	5.15~5.85		
	Chain 1	LYNwave	ALA110-222050-300011	3.5	2.4~2.5	PIFA	i-pex(MHF)
				5	5.15~5.85		
2	Chain 0	PSA	RFDPA171320EMLB301	3.14	2.4~2.5	Dipole	i-pex(MHF)
				5	5.15~5.85		
	Chain 1	PSA	RFDPA171320EMLB301	3.14	2.4~2.5	Dipole	i-pex(MHF)
				5	5.15~5.85		

For SAR (Portable)

Brand	Model	Antenna Gain (dBi)	Frequency range (GHz)	Antenna Type	Connector Type
REALTEK	RTK-ANT-0006	3.5	2.4~2.5	PIFA	i-pex(MHF)
		5	5.15~5.85	PIFA	i-pex(MHF)

## 低功率電波輻射性電機管理辦法

第十二條 經型式認證合格之低功率射頻電機，非經許可，公司、商號或使用者均不得擅自變更頻率、加大功率或變更原設計之特性及功能。

第十四條 低功率射頻電機之使用不得影響飛航安全及干擾合法通信；經發現有干擾現象時，應立即停用，並改善至無干擾時方得繼續使用。

前項合法通信，指依電信法規定作業之無線電通信。

低功率射頻電機須忍受合法通信或工業、科學及醫療用電波輻射性電機設備之干擾。

1. 使用此產品時應避免影響附近雷達系統之操作。
2. 高增益指向性天線只得應用於固定式點對點系統。

### 模組認證：

1. 本模組於取得認證後將依規定於模組本體標示審驗合格標籤。

2. 系統廠商應於平台上標示「本產品內含射頻模組：

XXXyyyLPDzzzz-x」字樣。

## Japan Statement

Host system must be labeled with "Contains MIC ID:xxxxxx“, MIC ID displayed on label.

## Installing the Wireless PCIe NGFF1216 module

### Hardware

Installing PCIe NGFF1216 module on NGFF2230 load board to PCIe NGFF2230 connector and connect two external Wi-Fi antennas on I-PEX connectors.



## Un-installing the Wireless PCIe NGFF1216 module

### Hardware

Remove 2 external Wi-Fi Antennas from the Wireless PCIe NGFF1216 module on

NGFF2230 load board and remove the Wireless PCIe NGFF1216 module on



NGFF2230 board from PCIe NGFF2230 connector port



### Installing the Wireless PCIe NGFF1216 module

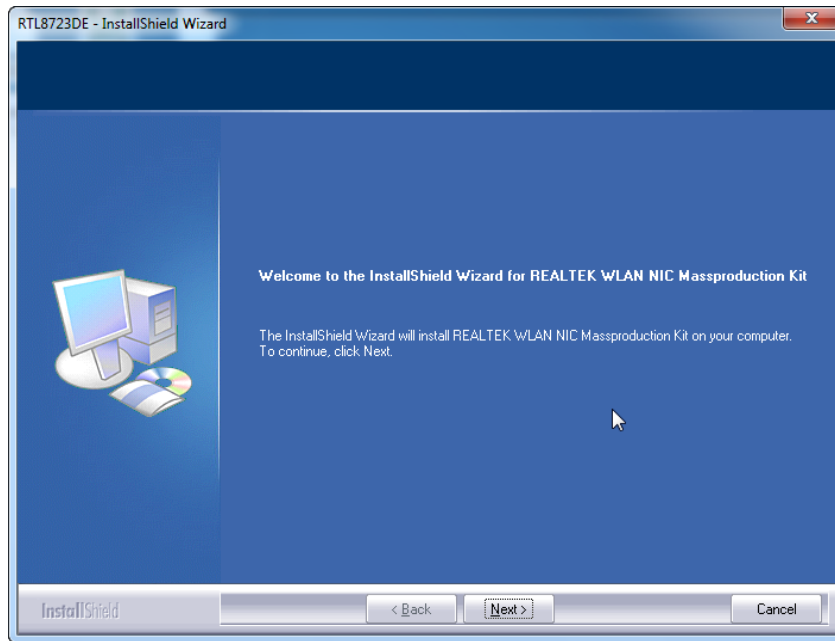
#### Software

Before you proceed with the installation, please notice following descriptions.

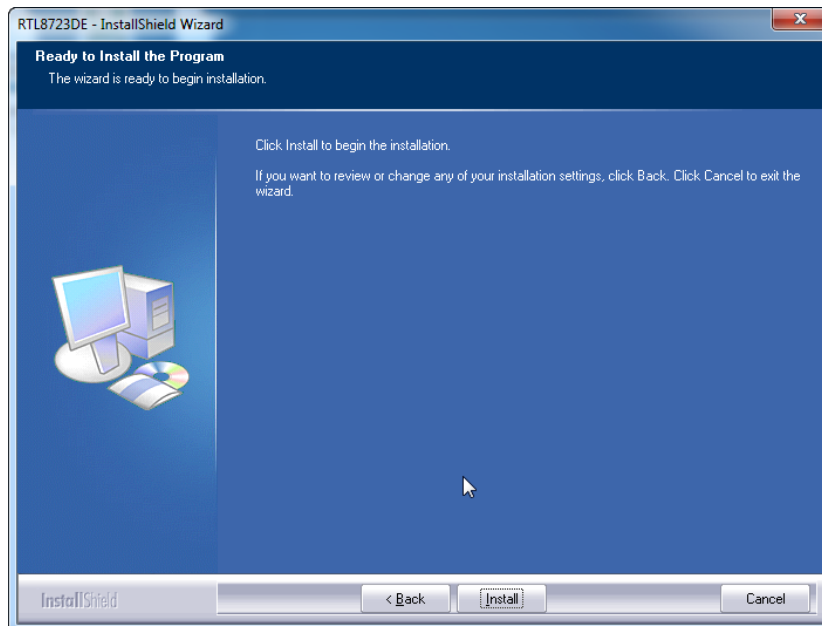
**Note1: The following installation was operated under Windows 7.**

**Note2: If you have installed the WLAN driver & utility before, please uninstall the old version first.**

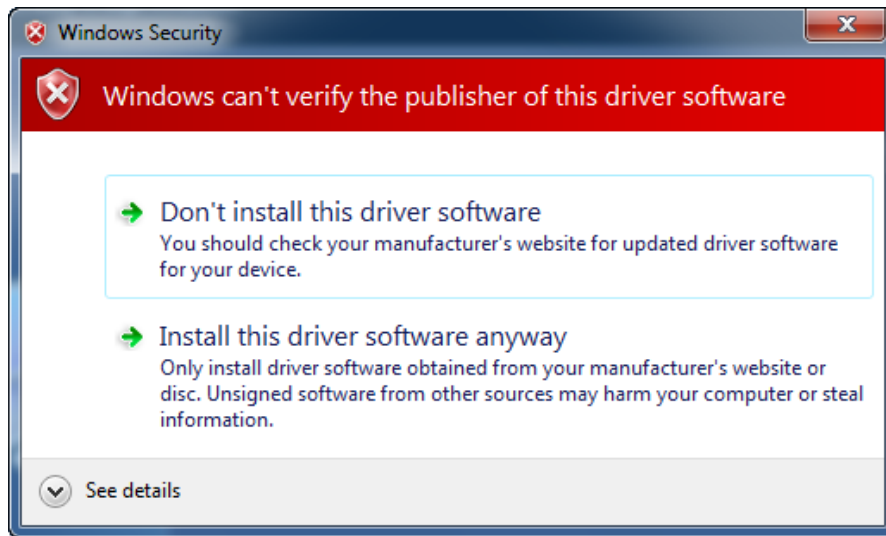
A. Execute the "setup.exe", Click "Next" to process the installation



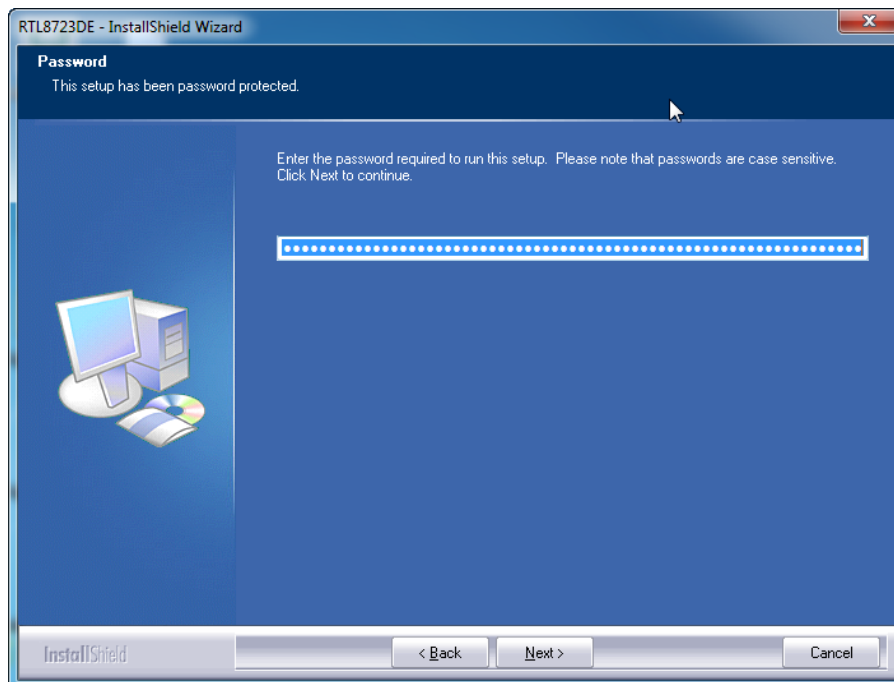
B. Click "Install" to process the installation



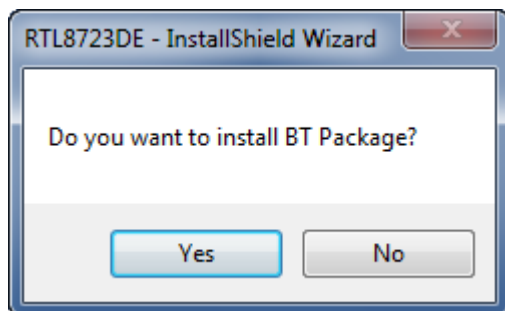
C. Click Install this driver software anyway



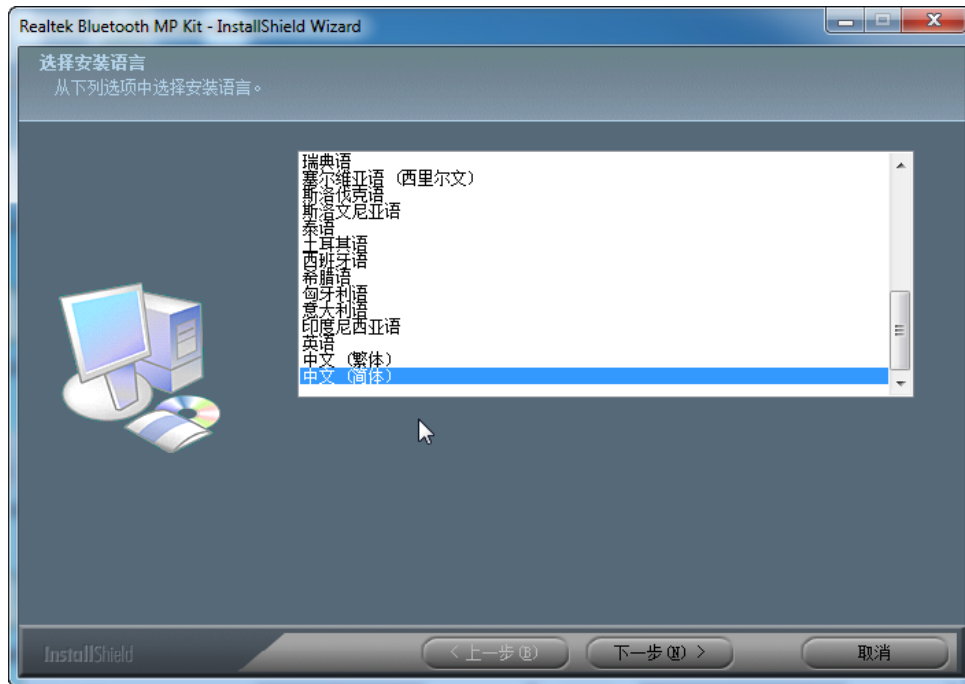
D. After step "C" please press Next button.



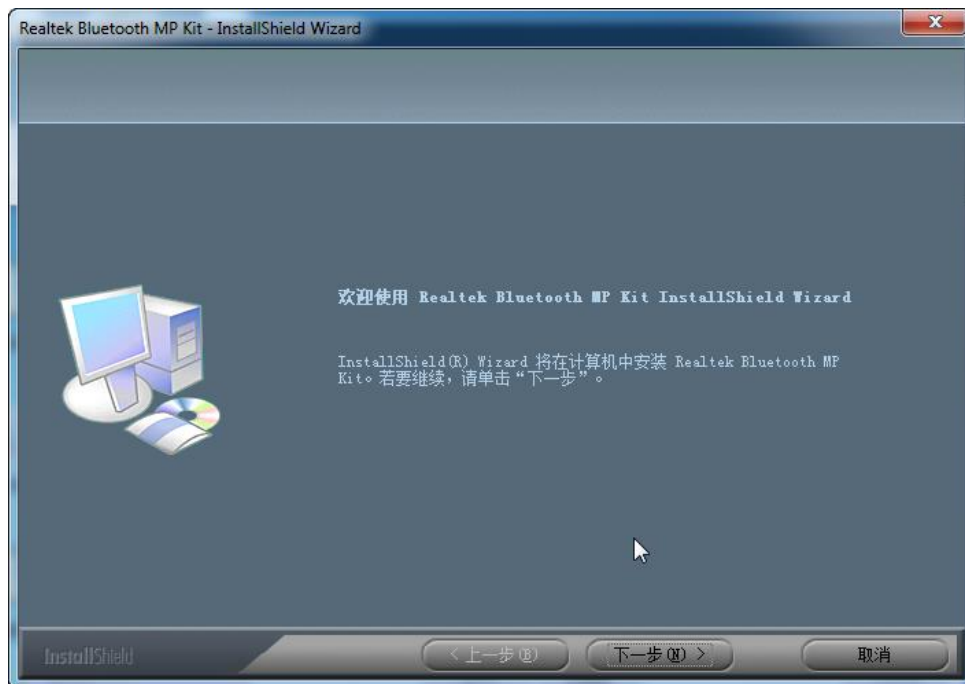
E. Please click "YES" to install BT package.



F. Please click "下一步" to continue.



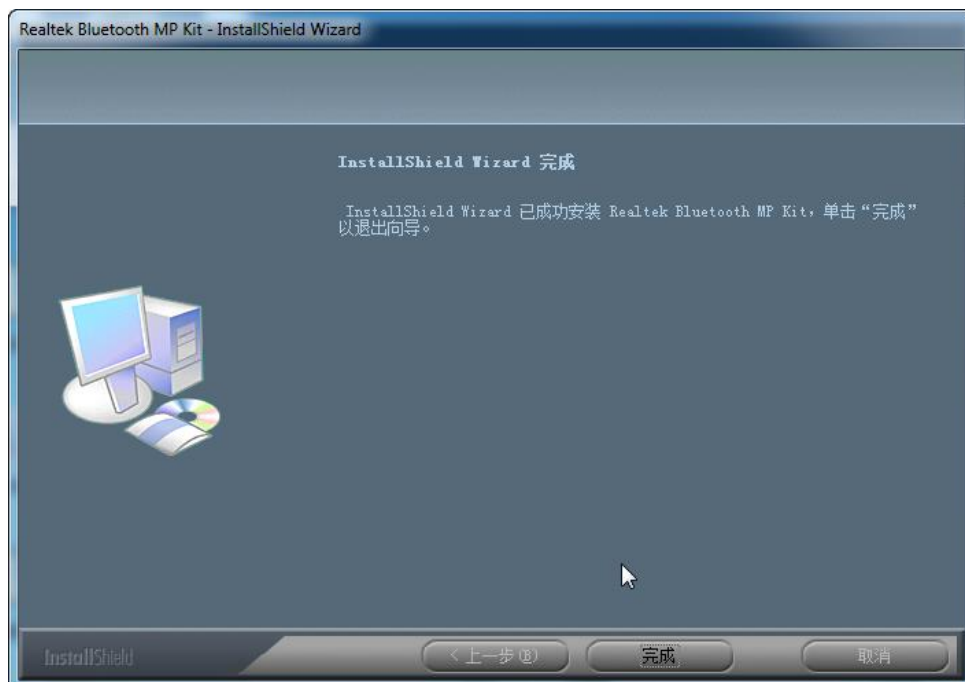
G. Please click “下一步” to continue.



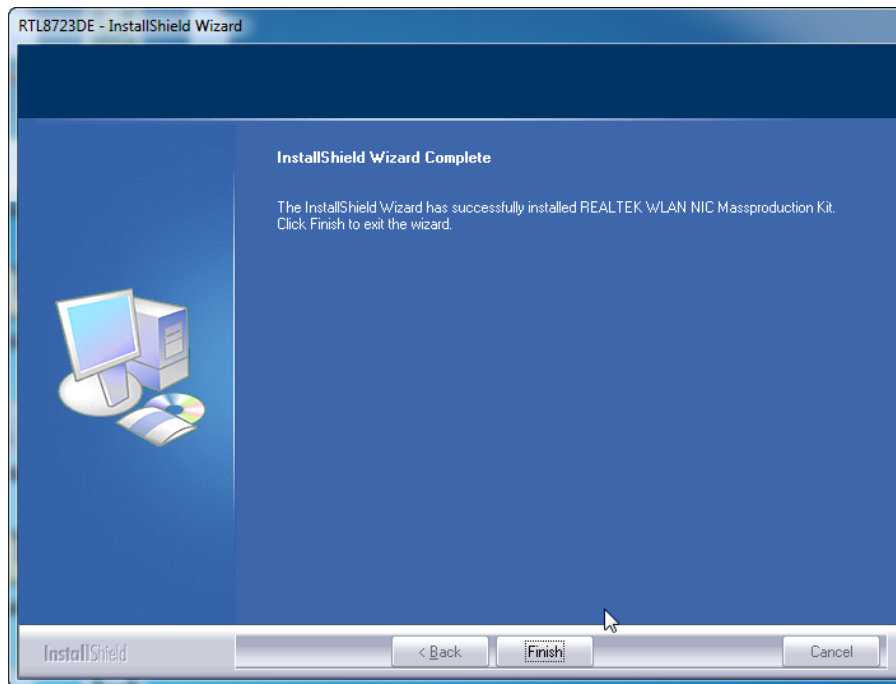
H. Please click “安装”to start installation.



I. Please click “完成”to finish the installation.



## J. Press Finish button to complete the install process

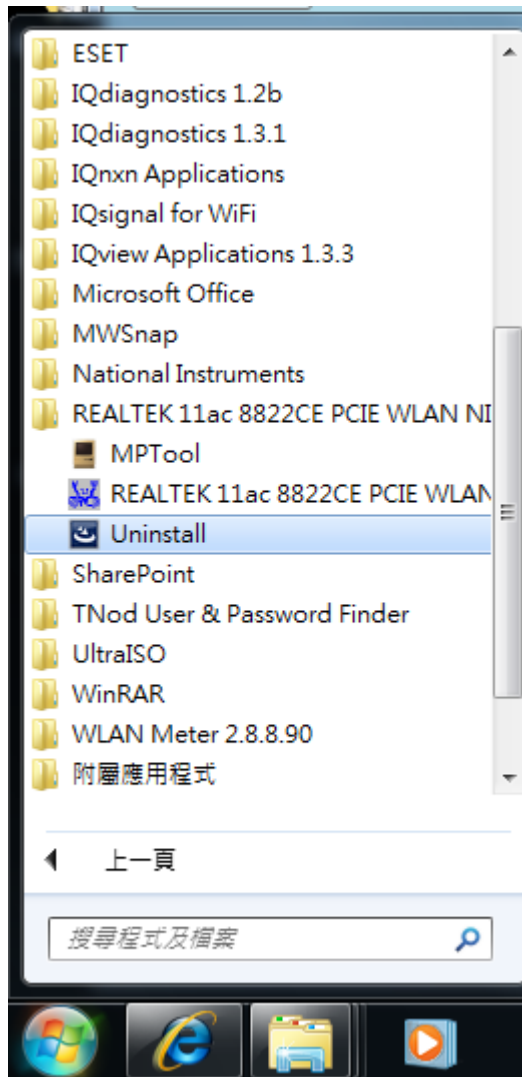


# Un-installing the Wireless PCIe NGFF1216 module

## Software

A. Uninstall the RTL8822C WLAN Driver from “Start”→ “All Programs”→ “REALTEK 11ac 8822CE PCIE WLAN NIC Massproduction kit”

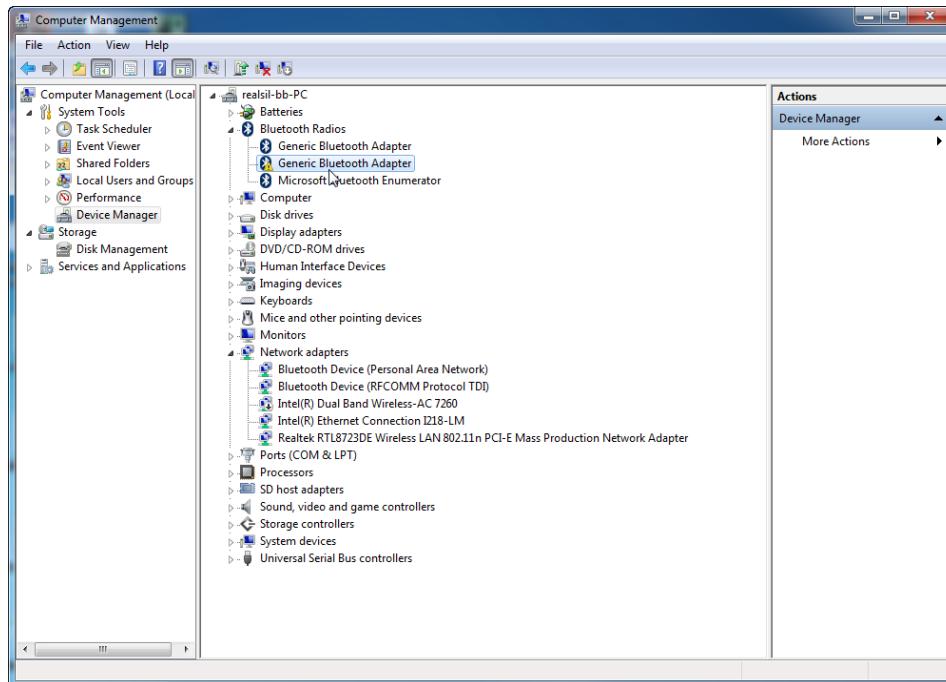
Please click “Uninstall” to remove RTL8822C WLAN driver.



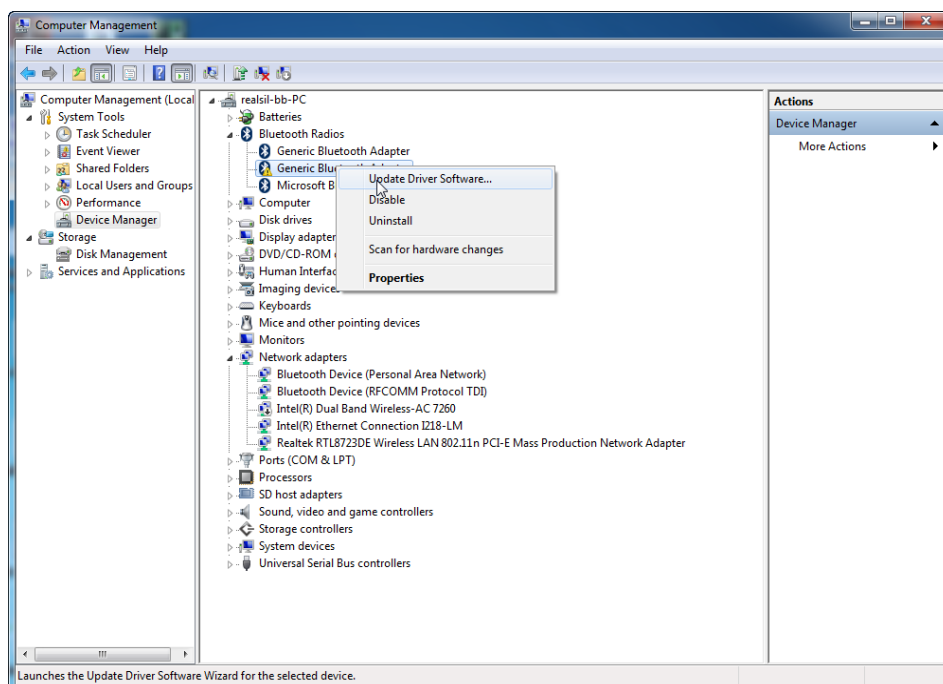
## Installing the Bluetooth USB Module

### Software

- A. Insert the NGFF1 card into system connector.
- B. Boot on system then the “Generic Bluetooth Adapter” device will show up in device manager.

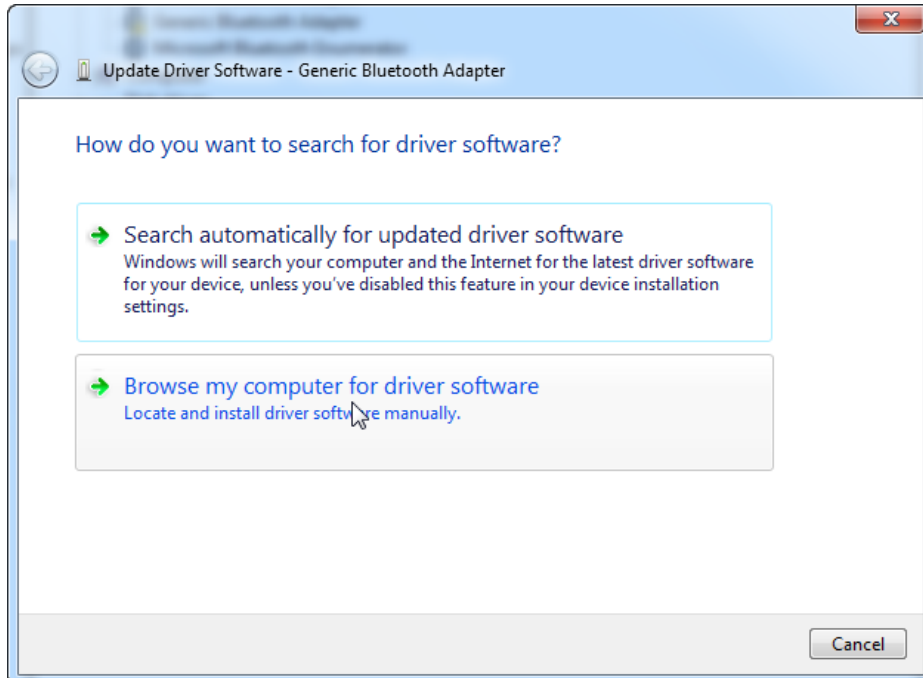


- C. Click right button on “RT Bluetooth Radio” and select “Update Driver”.

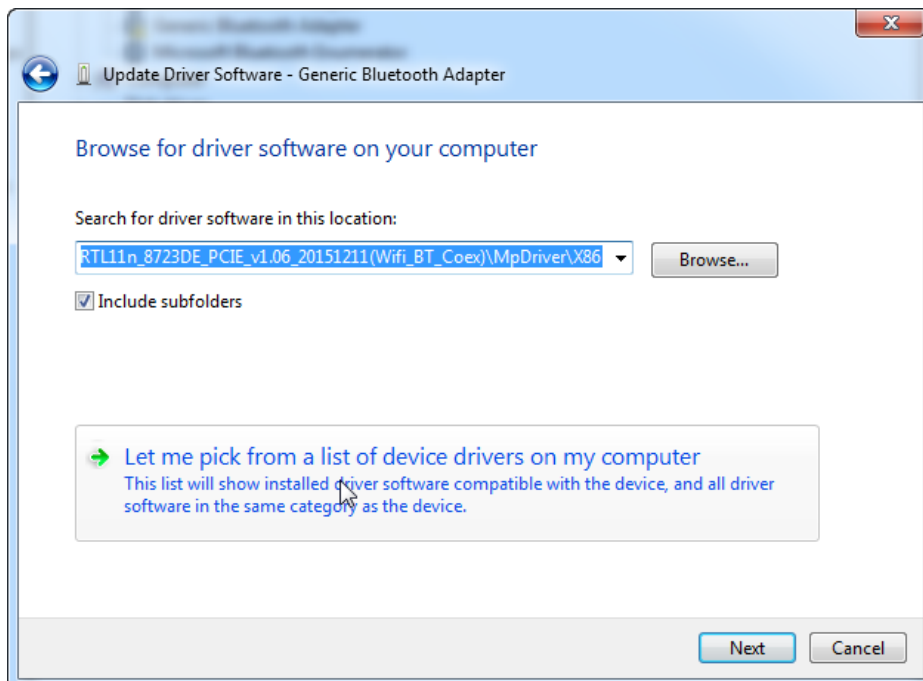




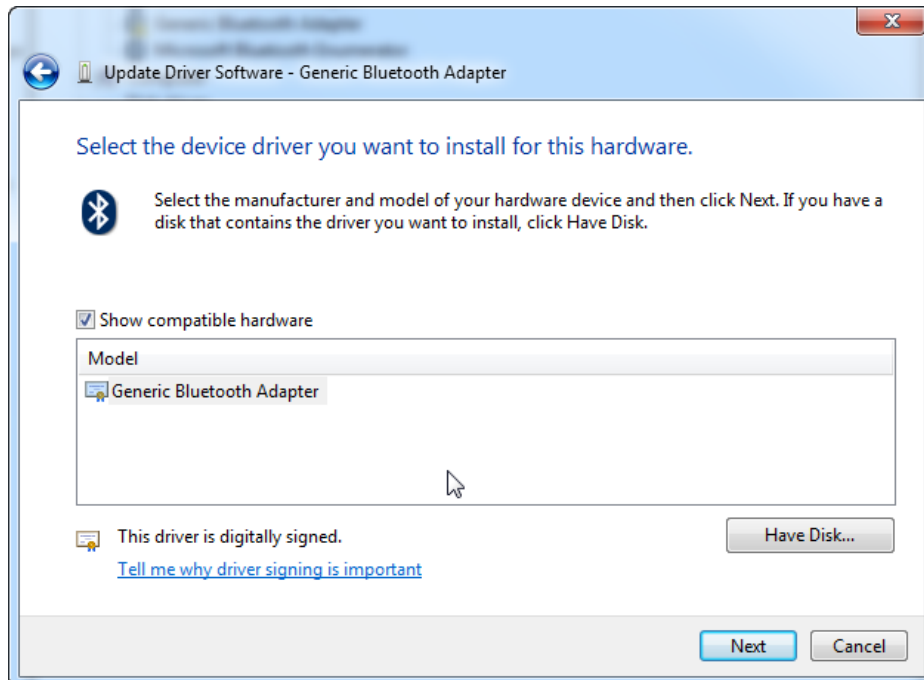
- D. After select “Update Driver Software ” then the Hardware Update Wizard will pop up, please select “Browse my computer for driver software” and press Next button.



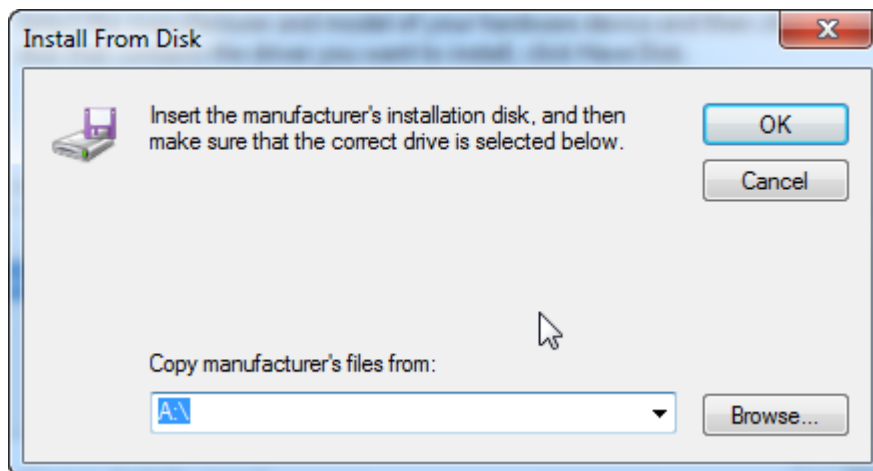
- E. After step “D” please Select “Let me pick from a list of device drivers on my computer ”.

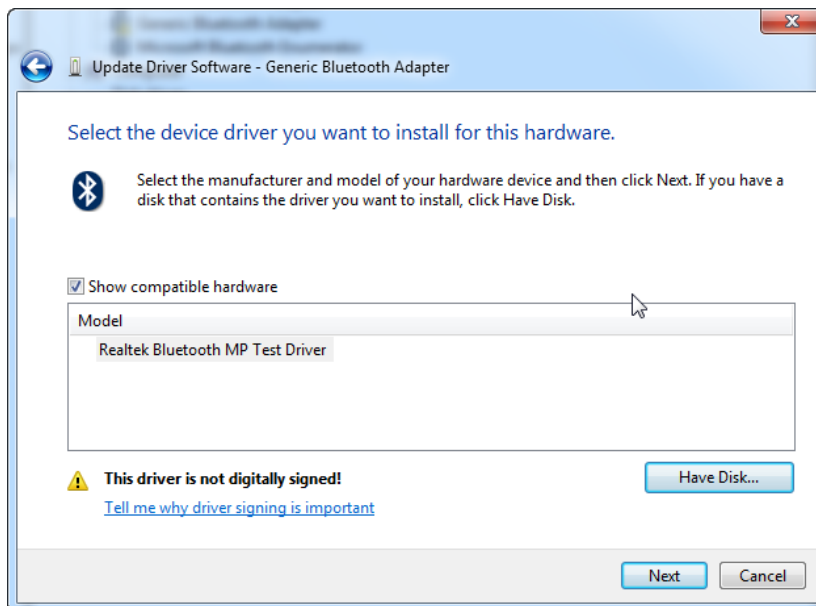
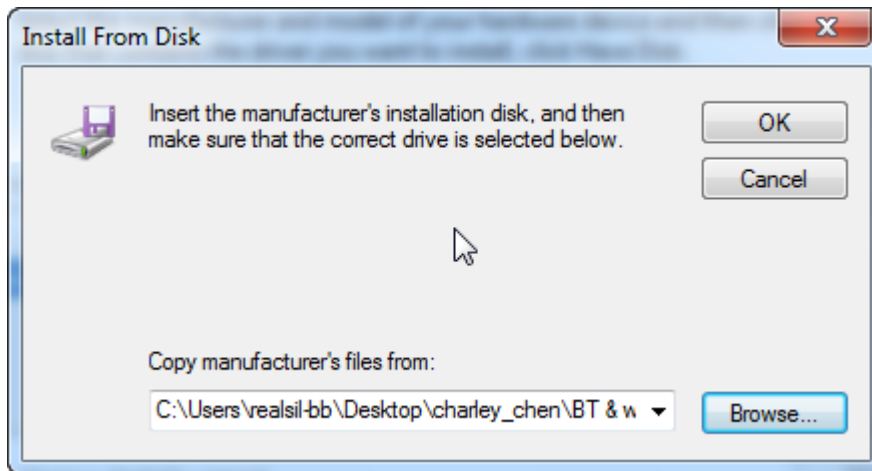
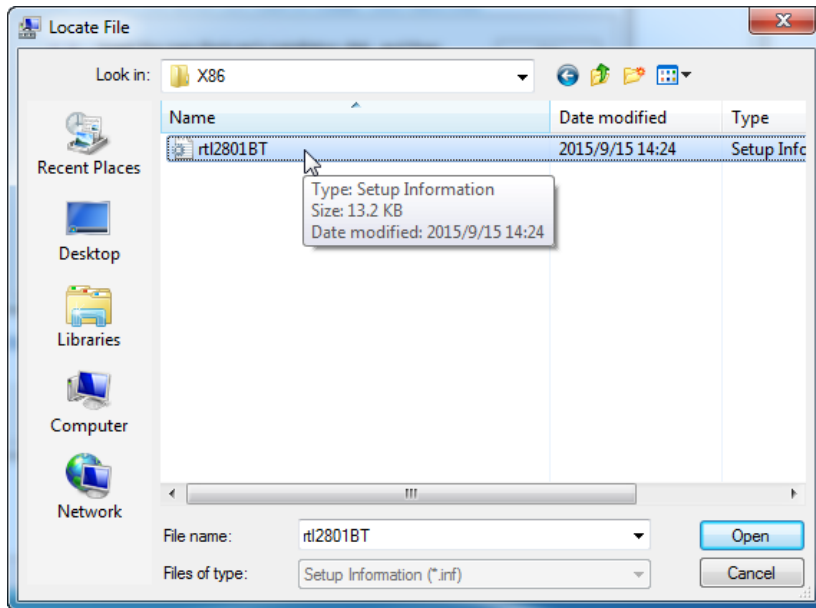


F. Finish step “E” then select “Have Disk..”

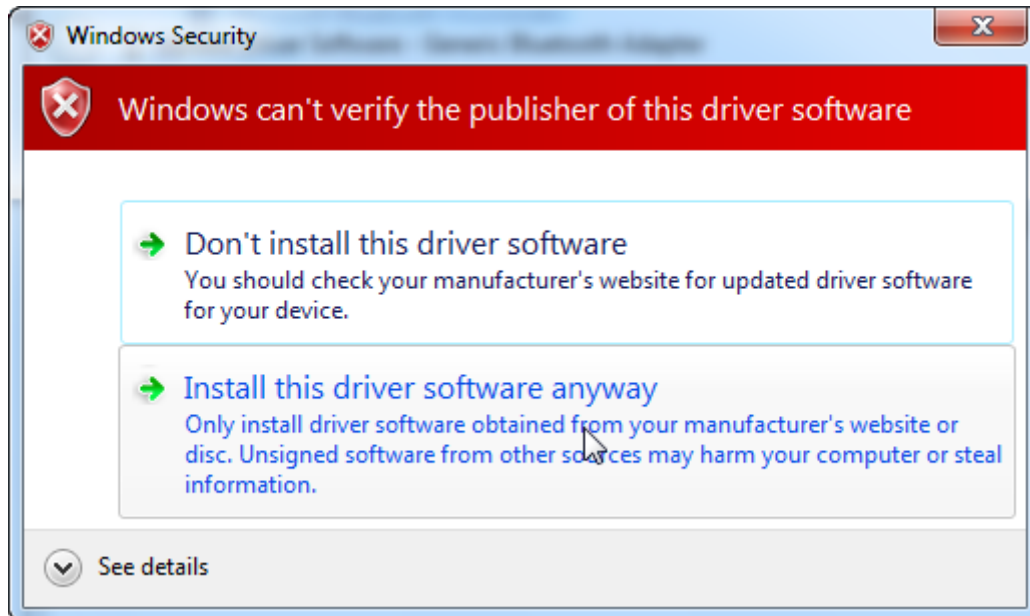


G. Now select browse to find the driver for device and press Next button.(The driver's locate is the same with WiFi driver )





H. Then click “Install this driver software anyway” to continue.



I. Press close button to complete the install process and you can see the Driver will be show up in Device Manager.

