

T04_802.11b_CH11_Back of Keyboard_0cm_ANT A

DUT: Notebook;

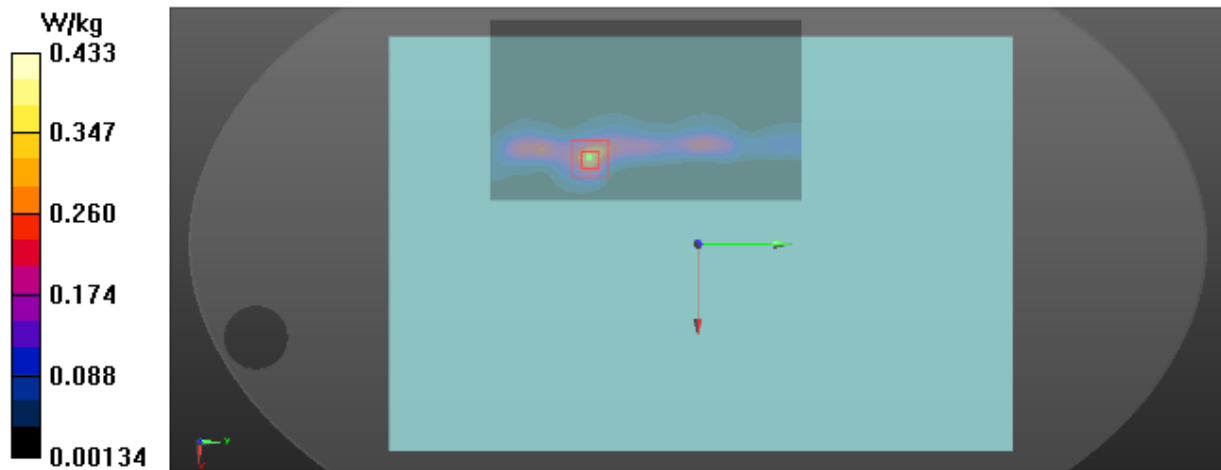
Communication System: UID 0, 802.11b (0); Frequency: 2462 MHz; Duty Cycle: 1:1
Medium parameters used: $f = 2462$ MHz; $\sigma = 2.02$ S/m; $\epsilon_r = 51.445$; $\rho = 1000$ kg/m³
Ambient Temperature : 23.3 °C; Liquid Temperature : 22.4 °C

DASY Configuration:

- Probe: EX3DV4 - SN7396; ConvF(7.7, 7.7, 7.7) @ 2462 MHz; Calibrated: 2018-05-29
- Sensor-Surface: 4mm (Mechanical Surface Detection), $z = 1.0, 31.0$
- Electronics: DAE4 Sn1390; Calibrated: 2018-05-11
- Phantom: ELI v5.0; Type: QDOVA002AA; Serial: TP:1222
- DASY52 52.10.2(1495); SEMCAD X 14.6.12(7450)

Area Scan (10x16x1): Interpolated grid: $dx=12$ mm, $dy=12$ mm
Maximum value of SAR (interpolated) = 0.308 W/kg

Zoom Scan (7x7x7)/Cube 0: Measurement grid: $dx=5$ mm, $dy=5$ mm, $dz=5$ mm
Reference Value = 0 V/m; Power Drift = 0.00 dB
Peak SAR (extrapolated) = 0.806 W/kg
SAR(1 g) = 0.355 W/kg; SAR(10 g) = 0.143 W/kg
Maximum value of SAR (measured) = 0.433 W/kg



T11_802.11b_CH1_Back of Keyboard_0cm_ANT B

DUT: Notebook;

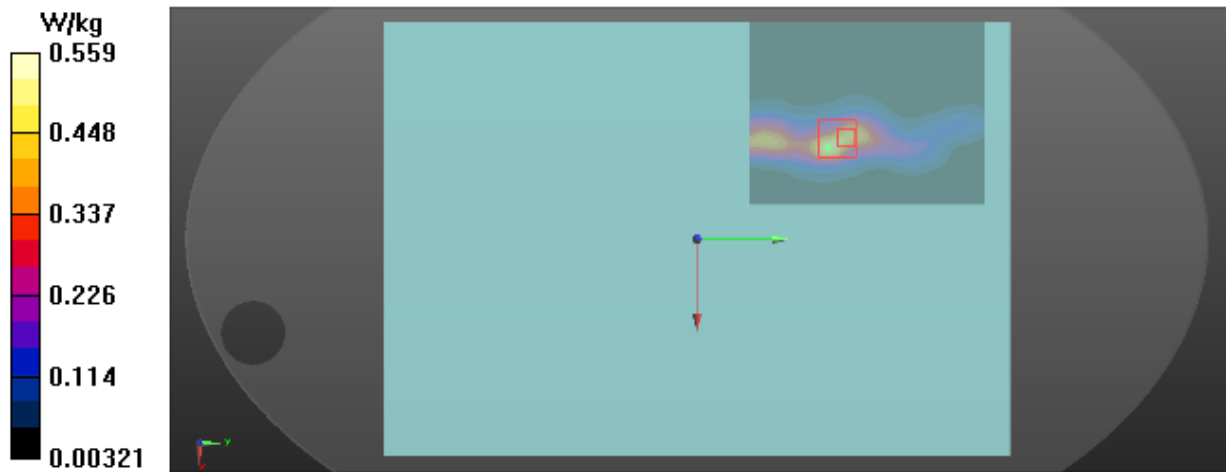
Communication System: UID 0, 802.11b (0); Frequency: 2412 MHz; Duty Cycle: 1:1
Medium parameters used: $f = 2412$ MHz; $\sigma = 1.957$ S/m; $\epsilon_r = 51.612$; $\rho = 1000$ kg/m³
Ambient Temperature : 23.3 °C; Liquid Temperature : 22.4 °C

DASY Configuration:

- Probe: EX3DV4 - SN7396; ConvF(7.7, 7.7, 7.7) @ 2412 MHz; Calibrated: 2018-05-29
- Sensor-Surface: 4mm (Mechanical Surface Detection), $z = 1.0, 31.0$
- Electronics: DAE4 Sn1390; Calibrated: 2018-05-11
- Phantom: ELI v5.0; Type: QDOVA002AA; Serial: TP:1222
- DASY52 52.10.2(1495); SEMCAD X 14.6.12(7450)

Area Scan (10x12x1): Interpolated grid: $dx=12$ mm, $dy=12$ mm
Maximum value of SAR (interpolated) = 0.525 W/kg

Zoom Scan (7x7x7)/Cube 0: Measurement grid: $dx=5$ mm, $dy=5$ mm, $dz=5$ mm
Reference Value = 0 V/m; Power Drift = 0.00 dB
Peak SAR (extrapolated) = 0.762 W/kg
SAR(1 g) = 0.399 W/kg; SAR(10 g) = 0.185 W/kg
Maximum value of SAR (measured) = 0.559 W/kg



T101_BT DH5_CH0_Back of Keyboard_0cm_ANT B

DUT: Notebook;

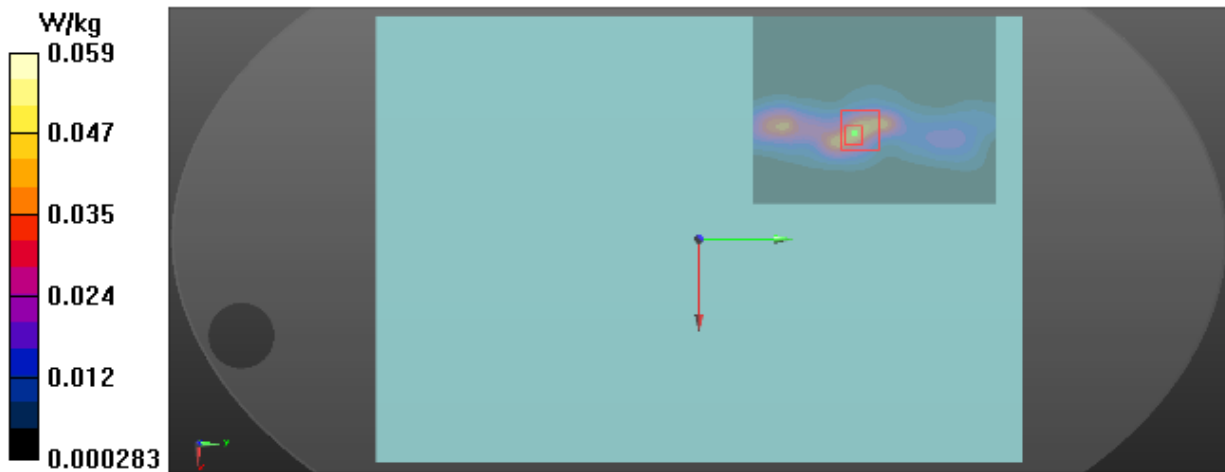
Communication System: UID 0, BT (0); Frequency: 2402 MHz; Duty Cycle: 1:1
 Medium parameters used (interpolated): $f = 2402$ MHz; $\sigma = 1.946$ S/m; $\epsilon_r = 51.639$; $\rho = 1000$ kg/m³
 Ambient Temperature : 23.3 °C; Liquid Temperature : 22.4 °C

DASY Configuration:

- Probe: EX3DV4 - SN7396; ConvF(7.7, 7.7, 7.7) @ 2402 MHz; Calibrated: 2018-05-29
- Sensor-Surface: 4mm (Mechanical Surface Detection), $z = 1.0, 31.0$
- Electronics: DAE4 Sn1390; Calibrated: 2018-05-11
- Phantom: ELI v5.0; Type: QDOVA002AA; Serial: TP:1222
- DASY52 52.10.2(1495); SEMCAD X 14.6.12(7450)

Area Scan (10x12x1): Interpolated grid: $dx=12$ mm, $dy=12$ mm
 Maximum value of SAR (interpolated) = 0.0425 W/kg

Zoom Scan (7x7x7)/Cube 0: Measurement grid: $dx=5$ mm, $dy=5$ mm, $dz=5$ mm
 Reference Value = 0 V/m; Power Drift = 0.09 dB
 Peak SAR (extrapolated) = 0.0900 W/kg
SAR(1 g) = 0.038 W/kg; SAR(10 g) = 0.017 W/kg
 Maximum value of SAR (measured) = 0.0589 W/kg



T84_802.11a_CH48_Back of Keyboard_0cm_ANT A

DUT: Notebook;

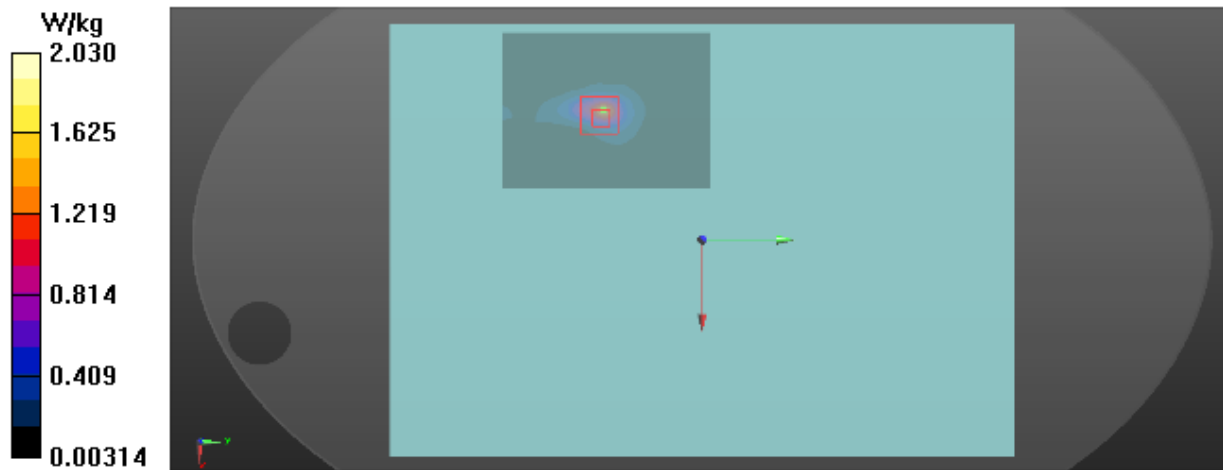
Communication System: UID 0, 802.11a (0); Frequency: 5240 MHz; Duty Cycle: 1:1
 Medium parameters used: $f = 5240$ MHz; $\sigma = 5.346$ S/m; $\epsilon_r = 49.138$; $\rho = 1000$ kg/m³
 Ambient Temperature : 23.4 °C; Liquid Temperature : 22.2 °C

DASY Configuration:

- Probe: EX3DV4 - SN7396; ConvF(5.3, 5.3, 5.3) @ 5240 MHz; Calibrated: 2018-05-29
- Sensor-Surface: 2mm (Mechanical Surface Detection), $z = 1.0, 23.0$
- Electronics: DAE4 Sn1390; Calibrated: 2018-05-11
- Phantom: ELI v5.0; Type: QDOVA002AA; Serial: TP:1222
- DASY52 52.10.2(1495); SEMCAD X 14.6.12(7450)

Area Scan (10x13x1): Interpolated grid: $dx=10$ mm, $dy=10$ mm
 Maximum value of SAR (interpolated) = 1.36 W/kg

Zoom Scan (7x7x12)/Cube 0: Measurement grid: $dx=4$ mm, $dy=4$ mm, $dz=2$ mm
 Reference Value = 1.156 V/m; Power Drift = 0.14 dB
 Peak SAR (extrapolated) = 5.81 W/kg
SAR(1 g) = 1.09 W/kg; SAR(10 g) = 0.311 W/kg
 Maximum value of SAR (measured) = 2.03 W/kg



T111_802.11n40_CH44_Back of Keyboard_0cm_ANT B

DUT: Notebook;

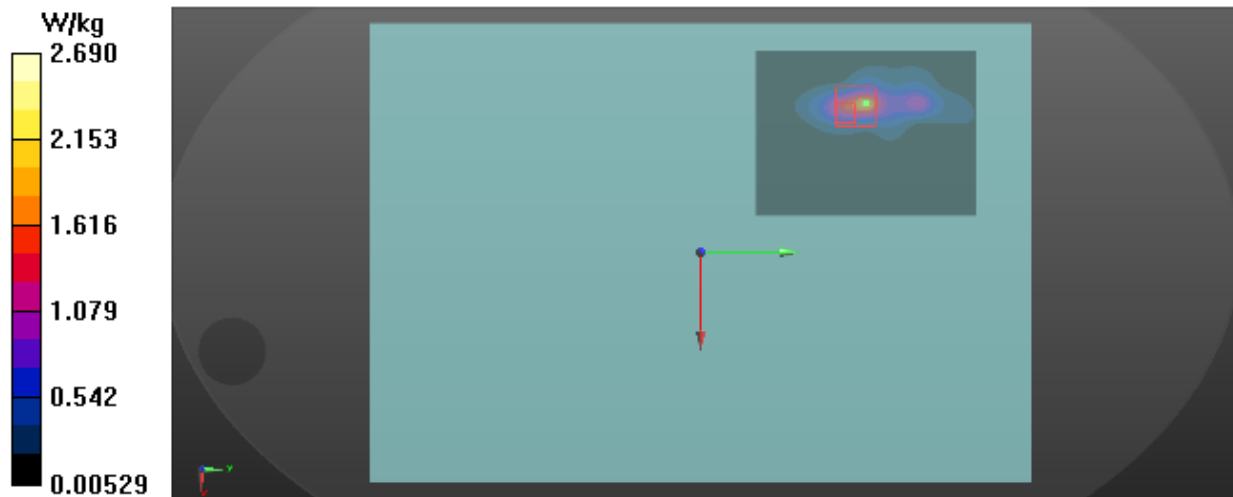
Communication System: UID 0, 802.11a (0); Frequency: 5220 MHz; Duty Cycle: 1:1
 Medium parameters used: $f = 5220$ MHz; $\sigma = 5.415$ S/m; $\epsilon_r = 47.757$; $\rho = 1000$ kg/m³
 Ambient Temperature : 23.6 °C; Liquid Temperature : 22.3 °C

DASY Configuration:

- Probe: EX3DV4 - SN7396; ConvF(5.3, 5.3, 5.3) @ 5220 MHz; Calibrated: 2018-05-29
- Sensor-Surface: 2mm (Mechanical Surface Detection), $z = 1.0, 23.0$
- Electronics: DAE4 Sn1390; Calibrated: 2018-05-11
- Phantom: ELI v5.0; Type: QDOVA002AA; Serial: TP:1222
- DASY52 52.10.2(1495); SEMCAD X 14.6.12(7450)

Area Scan (10x13x1): Interpolated grid: $dx=10$ mm, $dy=10$ mm
 Maximum value of SAR (interpolated) = 1.84 W/kg

Zoom Scan (7x7x12)/Cube 0: Measurement grid: $dx=4$ mm, $dy=4$ mm, $dz=2$ mm
 Reference Value = 1.551 V/m; Power Drift = 0.06 dB
 Peak SAR (extrapolated) = 6.77 W/kg
SAR(1 g) = 1.01 W/kg; SAR(10 g) = 0.350 W/kg
 Maximum value of SAR (measured) = 2.69 W/kg



T18_802.11n40_CH54_Back of Keyboard_0cm_ANT A

DUT: Notebook;

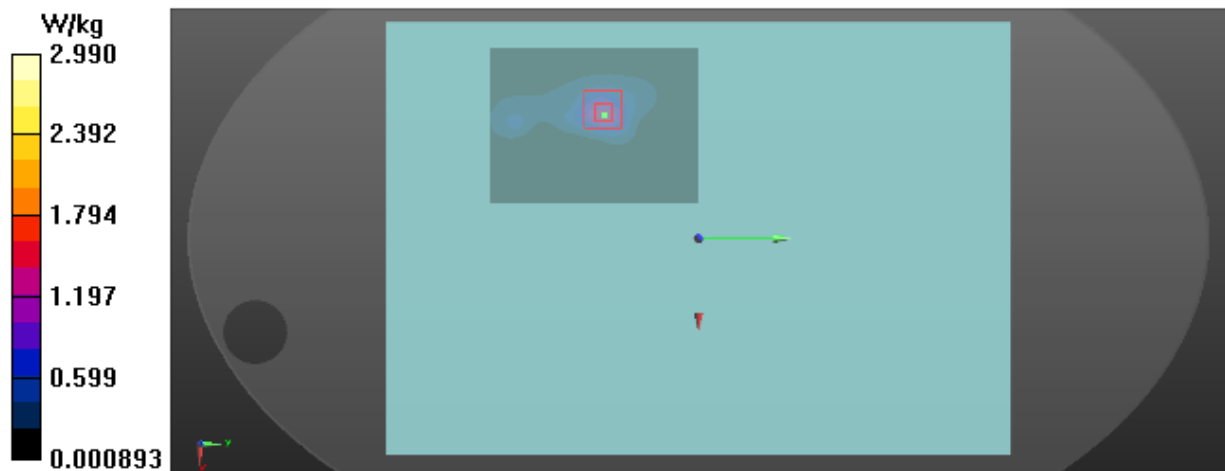
Communication System: UID 0, 802.11n (0); Frequency: 5270 MHz; Duty Cycle: 1:1
Medium parameters used: $f = 5270$ MHz; $\sigma = 5.396$ S/m; $\epsilon_r = 49.15$; $\rho = 1000$ kg/m³
Ambient Temperature : 23.4 °C; Liquid Temperature : 22.2 °C

DASY Configuration:

- Probe: EX3DV4 - SN7396; ConvF(5.05, 5.05, 5.05) @ 5270 MHz; Calibrated: 2018-05-29
- Sensor-Surface: 2mm (Mechanical Surface Detection), $z = 1.0, 23.0$
- Electronics: DAE4 Sn1390; Calibrated: 2018-05-11
- Phantom: ELI v5.0; Type: QDOVA002AA; Serial: TP:1222
- DASY52 52.10.2(1495); SEMCAD X 14.6.12(7450)

Area Scan (10x13x1): Interpolated grid: $dx=10$ mm, $dy=10$ mm
Maximum value of SAR (interpolated) = 1.32 W/kg

Zoom Scan (7x7x12)/Cube 0: Measurement grid: $dx=4$ mm, $dy=4$ mm, $dz=2$ mm
Reference Value = 2.349 V/m; Power Drift = -0.01 dB
Peak SAR (extrapolated) = 6.73 W/kg
SAR(1 g) = 1.23 W/kg; SAR(10 g) = 0.344 W/kg
Maximum value of SAR (measured) = 2.99 W/kg



T25_802.11n40_CH54_Back of Keyboard_0cm_ANT B

DUT: Notebook;

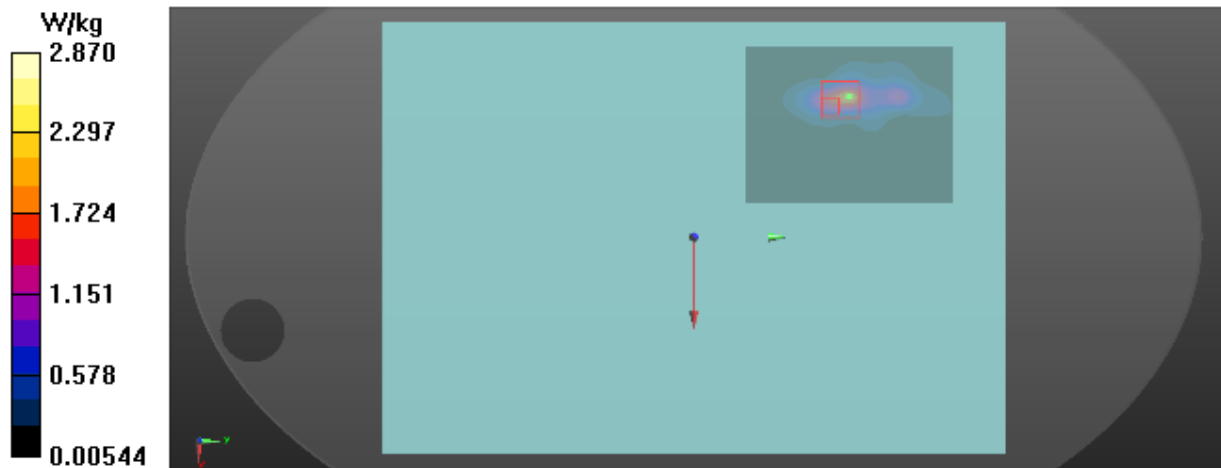
Communication System: UID 0, 802.11n (0); Frequency: 5270 MHz; Duty Cycle: 1:1
Medium parameters used: $f = 5270$ MHz; $\sigma = 5.396$ S/m; $\epsilon_r = 49.15$; $\rho = 1000$ kg/m³
Ambient Temperature : 23.4 °C; Liquid Temperature : 22.2 °C

DASY Configuration:

- Probe: EX3DV4 - SN7396; ConvF(5.05, 5.05, 5.05) @ 5270 MHz; Calibrated: 2018-05-29
- Sensor-Surface: 2mm (Mechanical Surface Detection), $z = 1.0, 23.0$
- Electronics: DAE4 Sn1390; Calibrated: 2018-05-11
- Phantom: ELI v5.0; Type: QDOVA002AA; Serial: TP:1222
- DASY52 52.10.2(1495); SEMCAD X 14.6.12(7450)

Area Scan (10x13x1): Interpolated grid: $dx=10$ mm, $dy=10$ mm
Maximum value of SAR (interpolated) = 1.97 W/kg

Zoom Scan (7x7x12)/Cube 0: Measurement grid: $dx=4$ mm, $dy=4$ mm, $dz=2$ mm
Reference Value = 1.575 V/m; Power Drift = 0.06 dB
Peak SAR (extrapolated) = 7.57 W/kg
SAR(1 g) = 1.08 W/kg; SAR(10 g) = 0.372 W/kg
Maximum value of SAR (measured) = 2.87 W/kg



T38_802.11a_CH136_Back of Keyboard_0cm_ANT A

DUT: Notebook;

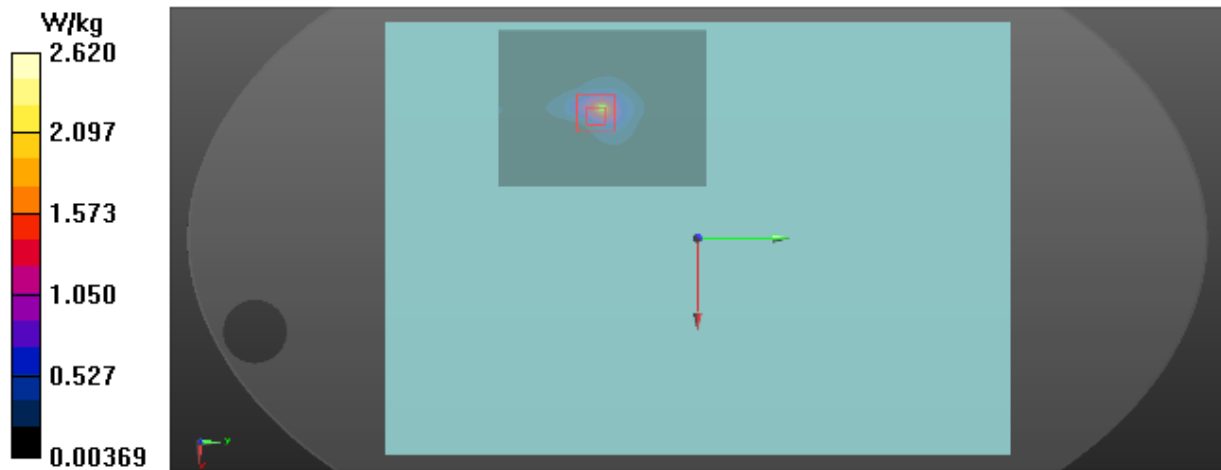
Communication System: UID 0, 802.11a (0); Frequency: 5680 MHz; Duty Cycle: 1:1
Medium parameters used: $f = 5680$ MHz; $\sigma = 5.943$ S/m; $\epsilon_r = 48.226$; $\rho = 1000$ kg/m³
Ambient Temperature : 23.4 °C; Liquid Temperature : 22.2 °C

DASY Configuration:

- Probe: EX3DV4 - SN7396; ConvF(4.38, 4.38, 4.38) @ 5680 MHz; Calibrated: 2018-05-29
- Sensor-Surface: 2mm (Mechanical Surface Detection), $z = 1.0, 23.0$
- Electronics: DAE4 Sn1390; Calibrated: 2018-05-11
- Phantom: ELI v5.0; Type: QDOVA002AA; Serial: TP:1222
- DASY52 52.10.2(1495); SEMCAD X 14.6.12(7450)

Area Scan (10x13x1): Interpolated grid: $dx=10$ mm, $dy=10$ mm
Maximum value of SAR (interpolated) = 1.80 W/kg

Zoom Scan (7x7x12)/Cube 0: Measurement grid: $dx=4$ mm, $dy=4$ mm, $dz=2$ mm
Reference Value = 0.8860 V/m; Power Drift = -0.06 dB
Peak SAR (extrapolated) = 10.4 W/kg
SAR(1 g) = 1.49 W/kg; SAR(10 g) = 0.394 W/kg
Maximum value of SAR (measured) = 2.62 W/kg



T45_802.11a_CH104_Back of Keyboard_0cm_ANT B

DUT: Notebook;

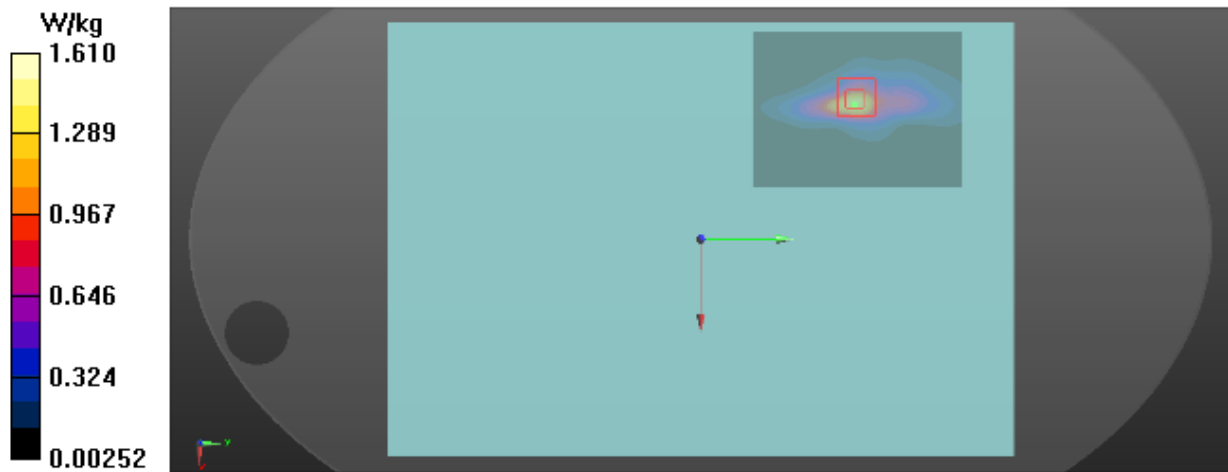
Communication System: UID 0, 802.11a (0); Frequency: 5520 MHz; Duty Cycle: 1:1
 Medium parameters used: $f = 5520$ MHz; $\sigma = 5.704$ S/m; $\epsilon_r = 48.663$; $\rho = 1000$ kg/m³
 Ambient Temperature : 23.4 °C; Liquid Temperature : 22.2 °C

DASY Configuration:

- Probe: EX3DV4 - SN7396; ConvF(4.38, 4.38, 4.38) @ 5520 MHz; Calibrated: 2018-05-29
- Sensor-Surface: 2mm (Mechanical Surface Detection), $z = 1.0, 23.0$
- Electronics: DAE4 Sn1390; Calibrated: 2018-05-11
- Phantom: ELI v5.0; Type: QDOVA002AA; Serial: TP:1222
- DASY52 52.10.2(1495); SEMCAD X 14.6.12(7450)

Area Scan (10x13x1): Interpolated grid: $dx=10$ mm, $dy=10$ mm
 Maximum value of SAR (interpolated) = 1.43 W/kg

Zoom Scan (7x7x12)/Cube 0: Measurement grid: $dx=4$ mm, $dy=4$ mm, $dz=2$ mm
 Reference Value = 0.9570 V/m; Power Drift = -0.06 dB
 Peak SAR (extrapolated) = 4.29 W/kg
SAR(1 g) = 0.753 W/kg; SAR(10 g) = 0.234 W/kg
 Maximum value of SAR (measured) = 1.61 W/kg



T61_802.11a_CH161_Back of Keyboard_0cm_ANT A

DUT: Notebook;

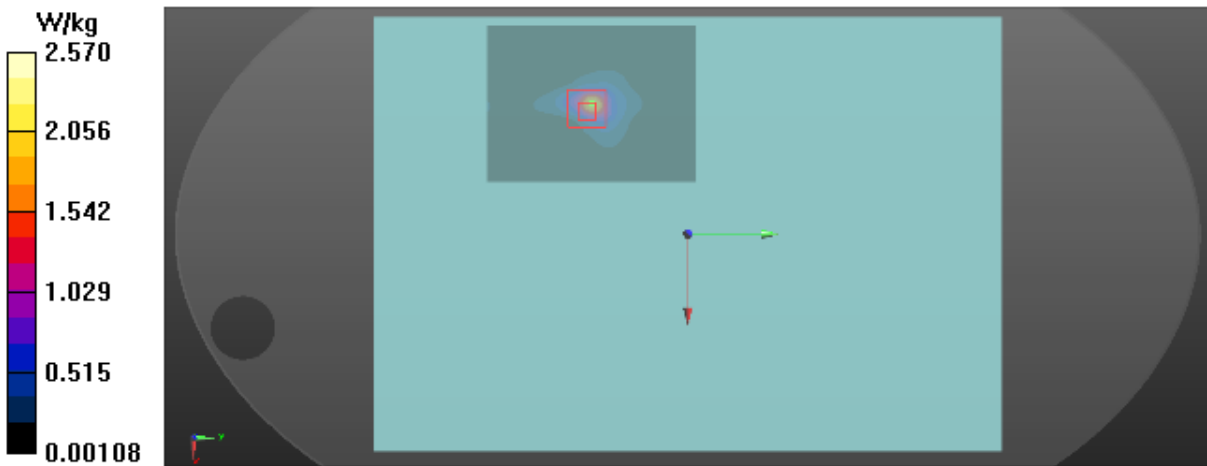
Communication System: UID 0, 802.11a (0); Frequency: 5805 MHz; Duty Cycle: 1:1
Medium parameters used: $f = 5805$ MHz; $\sigma = 6.145$ S/m; $\epsilon_r = 47.961$; $\rho = 1000$ kg/m³
Ambient Temperature : 23.1 °C; Liquid Temperature : 22.3 °C

DASY Configuration:

- Probe: EX3DV4 - SN7396; ConvF(4.5, 4.5, 4.5) @ 5805 MHz; Calibrated: 2018-05-29
- Sensor-Surface: 2mm (Mechanical Surface Detection), $z = 1.0, 23.0$
- Electronics: DAE4 Sn1390; Calibrated: 2018-05-11
- Phantom: ELI v5.0; Type: QDOVA002AA; Serial: TP:1222
- DASY52 52.10.2(1495); SEMCAD X 14.6.12(7450)

Area Scan (10x13x1): Interpolated grid: $dx=10$ mm, $dy=10$ mm
Maximum value of SAR (interpolated) = 2.04 W/kg

Zoom Scan (7x7x12)/Cube 0: Measurement grid: $dx=4$ mm, $dy=4$ mm, $dz=2$ mm
Reference Value = 0.6850 V/m; Power Drift = 0.07 dB
Peak SAR (extrapolated) = 10.5 W/kg
SAR(1 g) = 1.48 W/kg; SAR(10 g) = 0.388 W/kg
Maximum value of SAR (measured) = 2.57 W/kg



T69_802.11a_CH149_Back of Keyboard_0cm_ANT B

DUT: Notebook;

Communication System: UID 0, 802.11a (0); Frequency: 5745 MHz; Duty Cycle: 1:1
Medium parameters used: $f = 5745$ MHz; $\sigma = 6.028$ S/m; $\epsilon_r = 48.326$; $\rho = 1000$ kg/m³
Ambient Temperature : 23.1 °C; Liquid Temperature : 22.3 °C

DASY Configuration:

- Probe: EX3DV4 - SN7396; ConvF(4.5, 4.5, 4.5) @ 5745 MHz; Calibrated: 2018-05-29
- Sensor-Surface: 2mm (Mechanical Surface Detection), $z = 1.0, 23.0$
- Electronics: DAE4 Sn1390; Calibrated: 2018-05-11
- Phantom: ELI v5.0; Type: QDOVA002AA; Serial: TP:1222
- DASY52 52.10.2(1495); SEMCAD X 14.6.12(7450)

Area Scan (10x13x1): Interpolated grid: $dx=10$ mm, $dy=10$ mm
Maximum value of SAR (interpolated) = 0.856 W/kg

Zoom Scan (7x7x12)/Cube 0: Measurement grid: $dx=4$ mm, $dy=4$ mm, $dz=2$ mm
Reference Value = 2.357 V/m; Power Drift = -0.04 dB
Peak SAR (extrapolated) = 2.73 W/kg
SAR(1 g) = 0.464 W/kg; SAR(10 g) = 0.141 W/kg
Maximum value of SAR (measured) = 0.898 W/kg

