

T03_802.11b_CH6_Back of Keyboard_0cm_ANT1_NDX

DUT: Notebook;

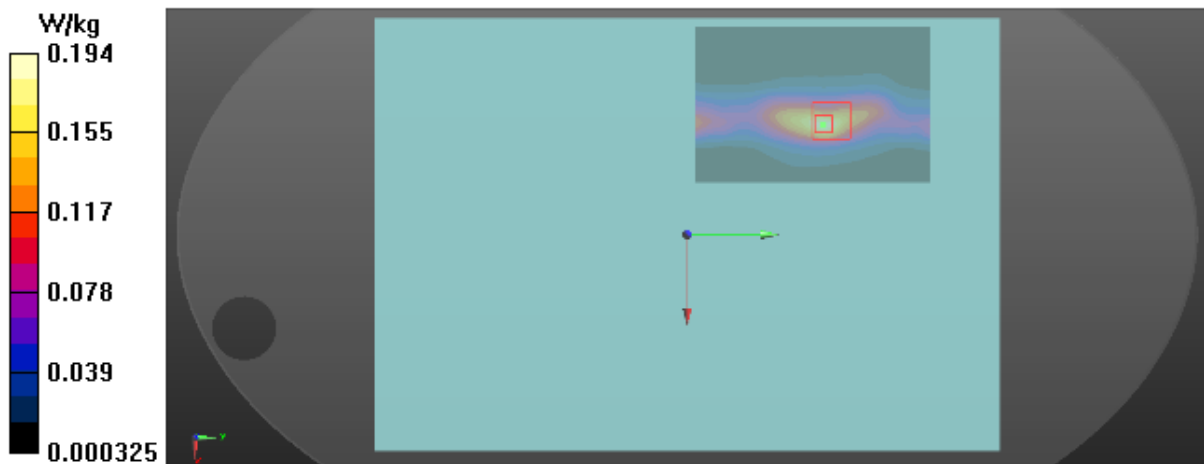
Communication System: UID 0, 802.11b (0); Frequency: 2437 MHz; Duty Cycle: 1:1
Medium parameters used: $f = 2437$ MHz; $\sigma = 2.021$ S/m; $\epsilon_r = 50.275$; $\rho = 1000$ kg/m³
Ambient Temperature : 23.5 °C; Liquid Temperature : 22.1 °C

DASY Configuration:

- Probe: EX3DV4 - SN7396; ConvF(7.7, 7.7, 7.7) @ 2437 MHz; Calibrated: 2018-05-29
- Sensor-Surface: 4mm (Mechanical Surface Detection), $z = 1.0, 31.0$
- Electronics: DAE3 Sn420; Calibrated: 2018-03-22
- Phantom: ELI v5.0; Type: QDOVA002AA; Serial: TP:1222
- DASY52 52.10.2(1495); SEMCAD X 14.6.12(7450)

Area Scan (9x12x1): Interpolated grid: $dx=12$ mm, $dy=12$ mm
Maximum value of SAR (interpolated) = 0.190 W/kg

Zoom Scan (7x7x7)/Cube 0: Measurement grid: $dx=5$ mm, $dy=5$ mm, $dz=5$ mm
Reference Value = 0.8000 V/m; Power Drift = 0.04 dB
Peak SAR (extrapolated) = 0.332 W/kg
SAR(1 g) = 0.165 W/kg; SAR(10 g) = 0.076 W/kg
Maximum value of SAR (measured) = 0.194 W/kg



T10_802.11b_CH1_Back of Keyboard_0cm_ANT2_NDX

DUT: Notebook;

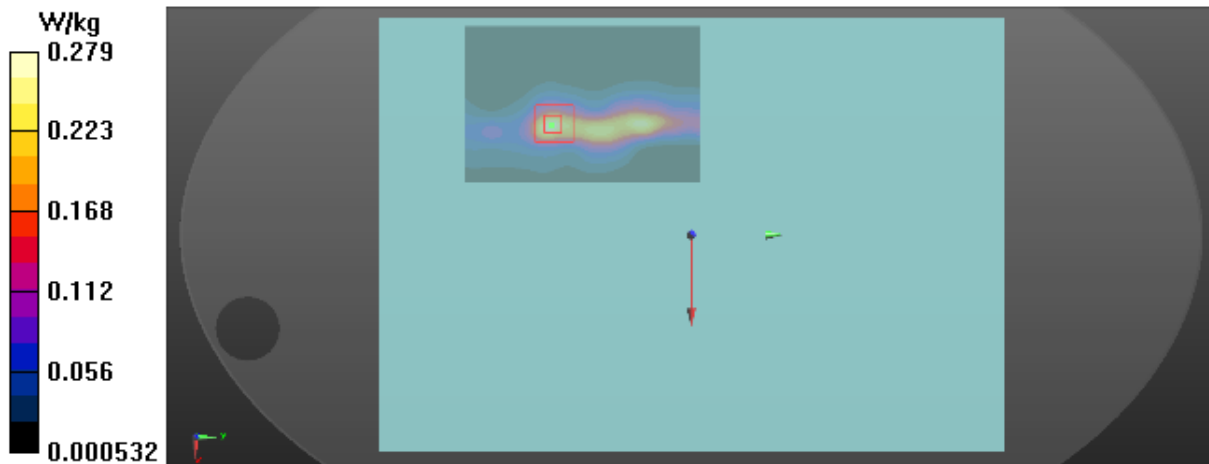
Communication System: UID 0, 802.11b (0); Frequency: 2412 MHz; Duty Cycle: 1:1
Medium parameters used: $f = 2412$ MHz; $\sigma = 1.98$ S/m; $\epsilon_r = 50.382$; $\rho = 1000$ kg/m³
Ambient Temperature : 23.5 °C; Liquid Temperature : 22.1 °C

DASY Configuration:

- Probe: EX3DV4 - SN7396; ConvF(7.7, 7.7, 7.7) @ 2412 MHz; Calibrated: 2018-05-29
- Sensor-Surface: 4mm (Mechanical Surface Detection), $z = 1.0, 31.0$
- Electronics: DAE3 Sn420; Calibrated: 2018-03-22
- Phantom: ELI v5.0; Type: QDOVA002AA; Serial: TP:1222
- DASY52 52.10.2(1495); SEMCAD X 14.6.12(7450)

Area Scan (9x12x1): Interpolated grid: $dx=12$ mm, $dy=12$ mm
Maximum value of SAR (interpolated) = 0.278 W/kg

Zoom Scan (7x7x7)/Cube 0: Measurement grid: $dx=5$ mm, $dy=5$ mm, $dz=5$ mm
Reference Value = 1.092 V/m; Power Drift = 0.02 dB
Peak SAR (extrapolated) = 0.454 W/kg
SAR(1 g) = 0.232 W/kg; SAR(10 g) = 0.105 W/kg
Maximum value of SAR (measured) = 0.279 W/kg



T20_802.11a_CH60_Back of Keyboard_0cm_ANT1_NDX

DUT: Notebook;

Communication System: UID 0, 802.11a (0); Frequency: 5300 MHz; Duty Cycle: 1:1
 Medium parameters used: $f = 5300$ MHz; $\sigma = 5.495$ S/m; $\epsilon_r = 47.444$; $\rho = 1000$ kg/m³
 Ambient Temperature : 23.2 °C; Liquid Temperature : 22.5 °C

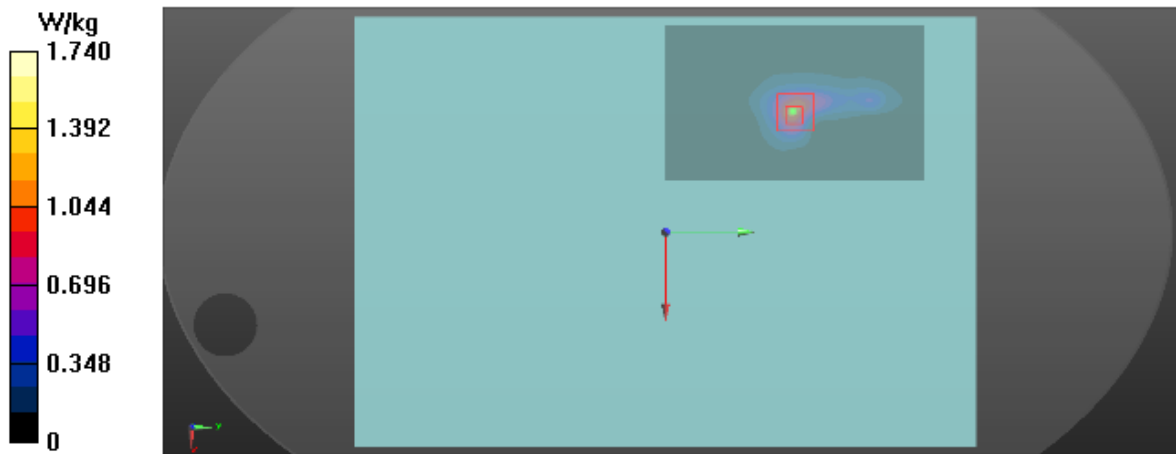
DASY Configuration:

- Probe: EX3DV4 - SN7396; ConvF(5.05, 5.05, 5.05) @ 5300 MHz; Calibrated: 2018-05-29
- Sensor-Surface: 2mm (Mechanical Surface Detection), $z = 1.0, 23.0$
- Electronics: DAE3 Sn420; Calibrated: 2018-03-22
- Phantom: ELI v5.0; Type: QDOVA002AA; Serial: TP:1222
- DASY52 52.10.2(1495); SEMCAD X 14.6.12(7450)

Area Scan (10x16x1): Interpolated grid: $dx=10$ mm, $dy=10$ mm
 Maximum value of SAR (interpolated) = 1.11 W/kg

Zoom Scan (7x7x12)/Cube 0: Measurement grid: $dx=4$ mm, $dy=4$ mm, $dz=2$ mm
 Reference Value = 0.7500 V/m; Power Drift = 0.02 dB

Peak SAR (extrapolated) = 4.63 W/kg
SAR(1 g) = 0.943 W/kg; SAR(10 g) = 0.286 W/kg
 Maximum value of SAR (measured) = 1.74 W/kg



T26_802.11a_CH64_Back of Keyboard_0cm_ANT2_NDX

DUT: Notebook;

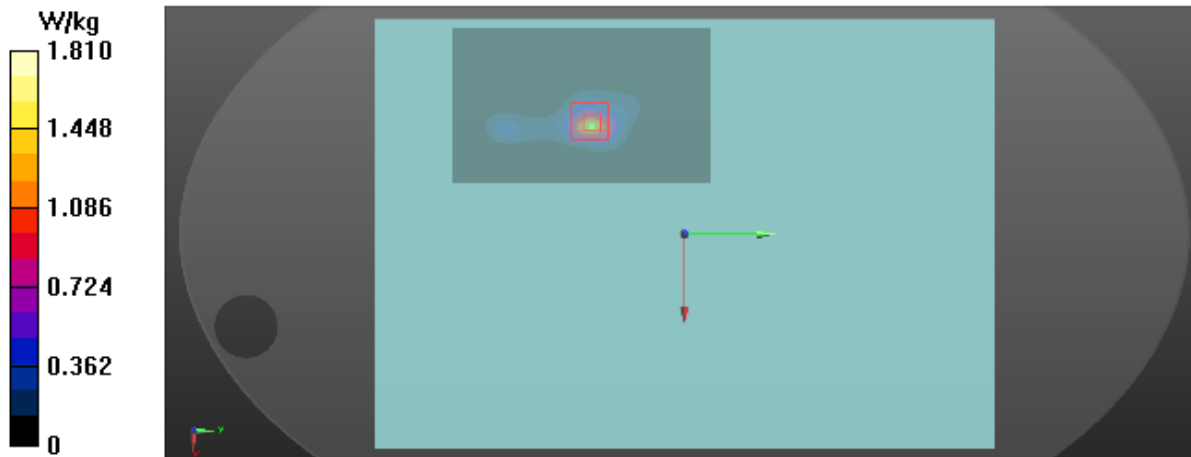
Communication System: UID 0, 802.11a (0); Frequency: 5320 MHz; Duty Cycle: 1:1
 Medium parameters used: $f = 5320$ MHz; $\sigma = 5.517$ S/m; $\epsilon_r = 47.421$; $\rho = 1000$ kg/m³
 Ambient Temperature : 23.2 °C; Liquid Temperature : 22.5 °C

DASY Configuration:

- Probe: EX3DV4 - SN7396; ConvF(5.05, 5.05, 5.05) @ 5320 MHz; Calibrated: 2018-05-29
- Sensor-Surface: 2mm (Mechanical Surface Detection), $z = 1.0, 23.0$
- Electronics: DAE3 Sn420; Calibrated: 2018-03-22
- Phantom: ELI v5.0; Type: QDOVA002AA; Serial: TP:1222
- DASY52 52.10.2(1495); SEMCAD X 14.6.12(7450)

Area Scan (10x16x1): Interpolated grid: $dx=10$ mm, $dy=10$ mm
 Maximum value of SAR (interpolated) = 1.45 W/kg

Zoom Scan (7x7x12)/Cube 0: Measurement grid: $dx=4$ mm, $dy=4$ mm, $dz=2$ mm
 Reference Value = 0 V/m; Power Drift = 0.00 dB
 Peak SAR (extrapolated) = 4.26 W/kg
SAR(1 g) = 0.826 W/kg; SAR(10 g) = 0.234 W/kg
 Maximum value of SAR (measured) = 1.81 W/kg



T34_802.11a_CH100_Back of Keyboard_0cm_ANT1_NDX

DUT: Notebook;

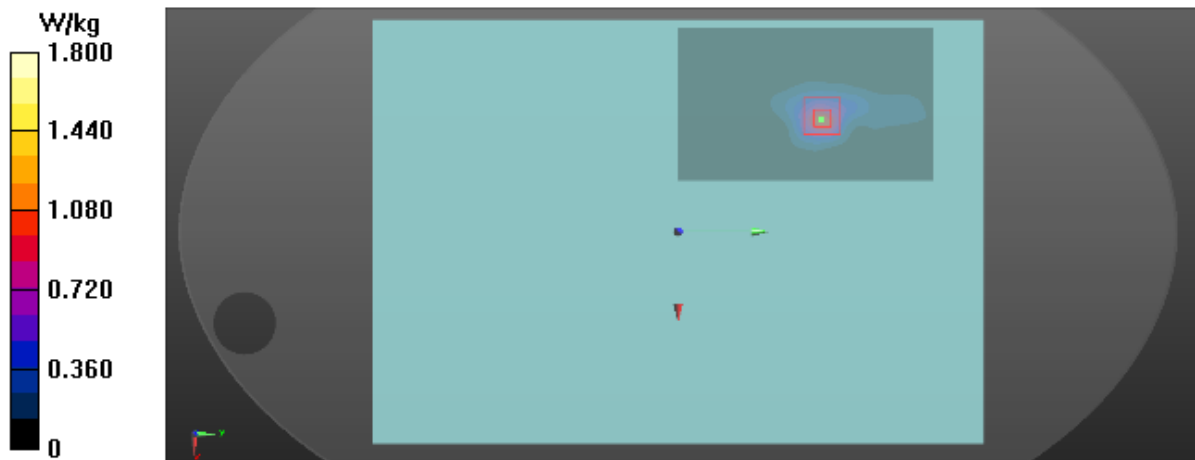
Communication System: UID 0, 802.11a (0); Frequency: 5500 MHz; Duty Cycle: 1:1
Medium parameters used: $f = 5500$ MHz; $\sigma = 5.768$ S/m; $\epsilon_r = 47.015$; $\rho = 1000$ kg/m³
Ambient Temperature : 23.4 °C; Liquid Temperature : 22.3 °C

DASY Configuration:

- Probe: EX3DV4 - SN7396; ConvF(4.38, 4.38, 4.38) @ 5500 MHz; Calibrated: 2018-05-29
- Sensor-Surface: 2mm (Mechanical Surface Detection), $z = 1.0, 23.0$
- Electronics: DAE3 Sn420; Calibrated: 2018-03-22
- Phantom: ELI v5.0; Type: QDOVA002AA; Serial: TP:1222
- DASY52 52.10.2(1495); SEMCAD X 14.6.12(7450)

Area Scan (10x16x1): Interpolated grid: $dx=10$ mm, $dy=10$ mm
Maximum value of SAR (interpolated) = 1.09 W/kg

Zoom Scan (7x7x12)/Cube 0: Measurement grid: $dx=4$ mm, $dy=4$ mm, $dz=2$ mm
Reference Value = 0 V/m; Power Drift = 0.00 dB
Peak SAR (extrapolated) = 4.56 W/kg
SAR(1 g) = 0.811 W/kg; SAR(10 g) = 0.238 W/kg
Maximum value of SAR (measured) = 1.80 W/kg



T42_802.11a_CH104_Back of Keyboard_0cm_ANT2_NDX

DUT: Notebook;

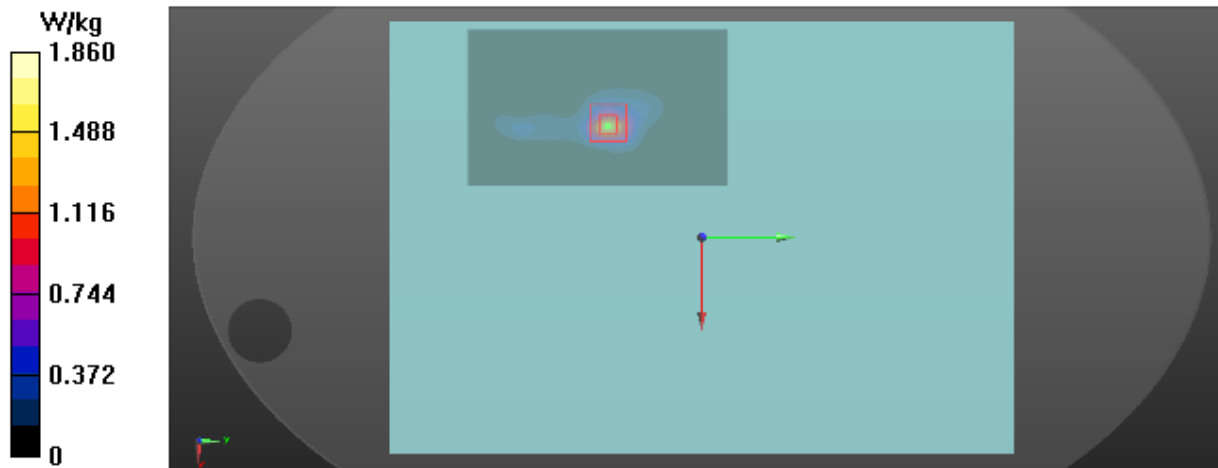
Communication System: UID 0, 802.11a (0); Frequency: 5520 MHz; Duty Cycle: 1:1
Medium parameters used: $f = 5520$ MHz; $\sigma = 5.803$ S/m; $\epsilon_r = 47.004$; $\rho = 1000$ kg/m³
Ambient Temperature : 23.4 °C; Liquid Temperature : 22.3 °C

DASY Configuration:

- Probe: EX3DV4 - SN7396; ConvF(4.38, 4.38, 4.38) @ 5520 MHz; Calibrated: 2018-05-29
- Sensor-Surface: 2mm (Mechanical Surface Detection), $z = 1.0, 23.0$
- Electronics: DAE3 Sn420; Calibrated: 2018-03-22
- Phantom: ELI v5.0; Type: QDOVA002AA; Serial: TP:1222
- DASY52 52.10.2(1495); SEMCAD X 14.6.12(7450)

Area Scan (10x16x1): Interpolated grid: $dx=10$ mm, $dy=10$ mm
Maximum value of SAR (interpolated) = 1.53 W/kg

Zoom Scan (7x7x12)/Cube 0: Measurement grid: $dx=4$ mm, $dy=4$ mm, $dz=2$ mm
Reference Value = 0 V/m; Power Drift = 0.00 dB
Peak SAR (extrapolated) = 4.44 W/kg
SAR(1 g) = 0.856 W/kg; SAR(10 g) = 0.250 W/kg
Maximum value of SAR (measured) = 1.86 W/kg



T50_802.11a_CH161_Back of Keyboard_0cm_ANT1_NDX

DUT: Notebook;

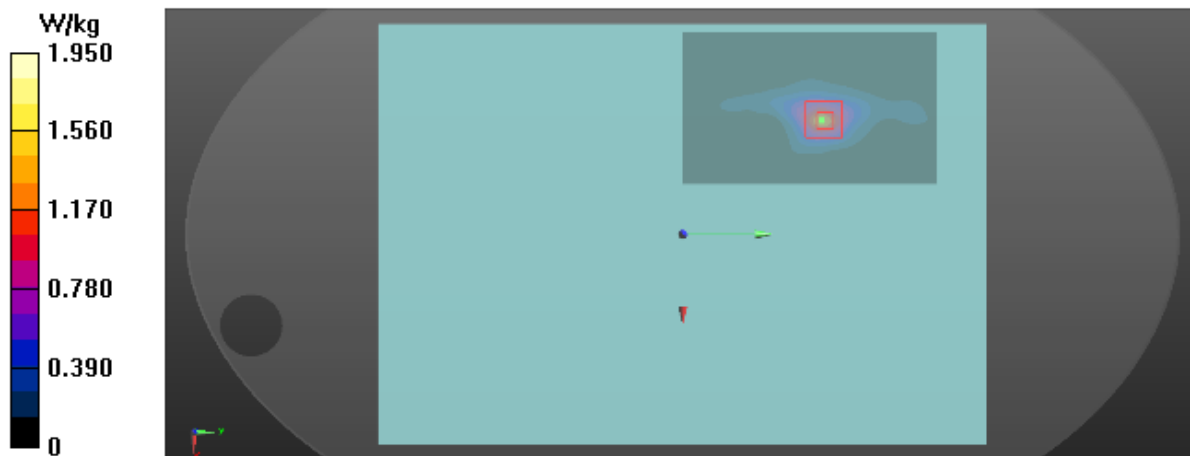
Communication System: UID 0, 802.11a (0); Frequency: 5805 MHz; Duty Cycle: 1:1
 Medium parameters used: $f = 5805$ MHz; $\sigma = 6.184$ S/m; $\epsilon_r = 46.463$; $\rho = 1000$ kg/m³
 Ambient Temperature : 23.1 °C; Liquid Temperature : 22.4 °C

DASY Configuration:

- Probe: EX3DV4 - SN7396; ConvF(4.5, 4.5, 4.5) @ 5805 MHz; Calibrated: 2018-05-29
- Sensor-Surface: 2mm (Mechanical Surface Detection), $z = 1.0, 23.0$
- Electronics: DAE3 Sn420; Calibrated: 2018-03-22
- Phantom: ELI v5.0; Type: QDOVA002AA; Serial: TP:1222
- DASY52 52.10.2(1495); SEMCAD X 14.6.12(7450)

Area Scan (10x16x1): Interpolated grid: $dx=10$ mm, $dy=10$ mm
 Maximum value of SAR (interpolated) = 1.34 W/kg

Zoom Scan (7x7x12)/Cube 0: Measurement grid: $dx=4$ mm, $dy=4$ mm, $dz=2$ mm
 Reference Value = 0 V/m; Power Drift = 0.00 dB
 Peak SAR (extrapolated) = 5.34 W/kg
SAR(1 g) = 0.958 W/kg; SAR(10 g) = 0.294 W/kg
 Maximum value of SAR (measured) = 1.95 W/kg



T60_802.11a_CH165_Back of Keyboard_0cm_ANT2_NDX

DUT: Notebook;

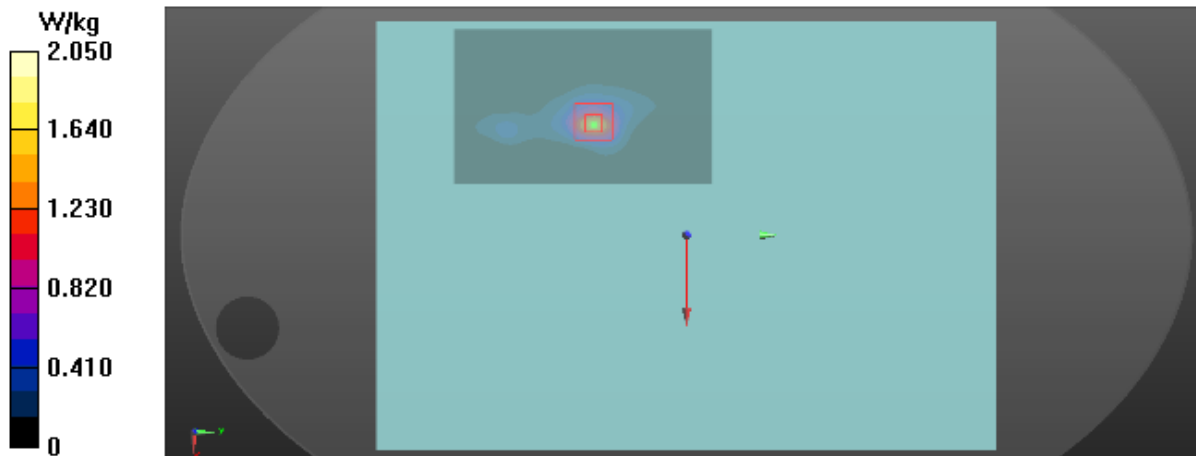
Communication System: UID 0, 802.11a (0); Frequency: 5825 MHz; Duty Cycle: 1:1
Medium parameters used: $f = 5825$ MHz; $\sigma = 6.224$ S/m; $\epsilon_r = 46.369$; $\rho = 1000$ kg/m³
Ambient Temperature : 23.1 °C; Liquid Temperature : 22.4 °C

DASY Configuration:

- Probe: EX3DV4 - SN7396; ConvF(4.5, 4.5, 4.5) @ 5825 MHz; Calibrated: 2018-05-29
- Sensor-Surface: 2mm (Mechanical Surface Detection), $z = 1.0, 23.0$
- Electronics: DAE3 Sn420; Calibrated: 2018-03-22
- Phantom: ELI v5.0; Type: QDOVA002AA; Serial: TP:1222
- DASY52 52.10.2(1495); SEMCAD X 14.6.12(7450)

Area Scan (10x16x1): Interpolated grid: $dx=10$ mm, $dy=10$ mm
Maximum value of SAR (interpolated) = 1.62 W/kg

Zoom Scan (7x7x12)/Cube 0: Measurement grid: $dx=4$ mm, $dy=4$ mm, $dz=2$ mm
Reference Value = 0.7860 V/m; Power Drift = 0.03 dB
Peak SAR (extrapolated) = 5.22 W/kg
SAR(1 g) = 0.960 W/kg; SAR(10 g) = 0.284 W/kg
Maximum value of SAR (measured) = 2.05 W/kg



T68_BT_CH78_Back of Keyboard_0cm_ANT1_NDX

DUT: Notebook;

Communication System: UID 0, BT (0); Frequency: 2480 MHz; Duty Cycle: 1:1
Medium parameters used: $f = 2480$ MHz; $\sigma = 2.081$ S/m; $\epsilon_r = 50.181$; $\rho = 1000$ kg/m³
Ambient Temperature : 23.5 °C; Liquid Temperature : 22.1 °C

DASY Configuration:

- Probe: EX3DV4 - SN7396; ConvF(7.7, 7.7, 7.7) @ 2480 MHz; Calibrated: 2018-05-29
- Sensor-Surface: 4mm (Mechanical Surface Detection), $z = 1.0, 31.0$
- Electronics: DAE3 Sn420; Calibrated: 2018-03-22
- Phantom: ELI v5.0; Type: QDOVA002AA; Serial: TP:1222
- DASY52 52.10.2(1495); SEMCAD X 14.6.12(7450)

Area Scan (9x13x1): Interpolated grid: $dx=12$ mm, $dy=12$ mm
Maximum value of SAR (interpolated) = 0.0408 W/kg

Zoom Scan (7x7x7)/Cube 0: Measurement grid: $dx=5$ mm, $dy=5$ mm, $dz=5$ mm
Reference Value = 1.240 V/m; Power Drift = -0.07 dB
Peak SAR (extrapolated) = 0.0600 W/kg
SAR(1 g) = 0.025 W/kg; SAR(10 g) = 0.010 W/kg
Maximum value of SAR (measured) = 0.028 W/kg

