

Wi-Fi 2.4GHz Band

Frequency: 2437 MHz; Duty Cycle: 1:1; Room Ambient Temperature: 24.0°C; Liquid Temperature: 23.5°C

Medium parameters used (interpolated): $f = 2437$ MHz; $\sigma = 2.012$ S/m; $\epsilon_r = 52.775$; $\rho = 1000$ kg/m³

DASY5 Configuration:

- Area Scan Setting - Find Secondary Maximum Within: 2.0 dB and with a peak SAR value greater than 0.0012W/kg
- Electronics: DAE4 Sn877; Calibrated: 2017/3/20
- Probe: EX3DV4 - SN3665; ConvF(7.64, 7.64, 7.64); Calibrated: 2017/5/24;
- Sensor-Surface: 1.4mm (Mechanical Surface Detection (Locations From Previous Scan Used)), Sensor-Surface: 1.4mm (Mechanical Surface Detection)
- Phantom: ELI 4.0; Type: QDOVA001BA; Serial: 1056

Rear/Main/802.11b/CH6/Area Scan (6x5x1): Measurement grid: dx=12mm, dy=12mm

[Info: Interpolated medium parameters used for SAR evaluation.](#)

Maximum value of SAR (measured) = 0.287 W/kg

Rear/Main/802.11b/CH6/Zoom Scan (7x7x7)/Cube 0: Measurement grid: dx=5mm, dy=5mm, dz=5mm

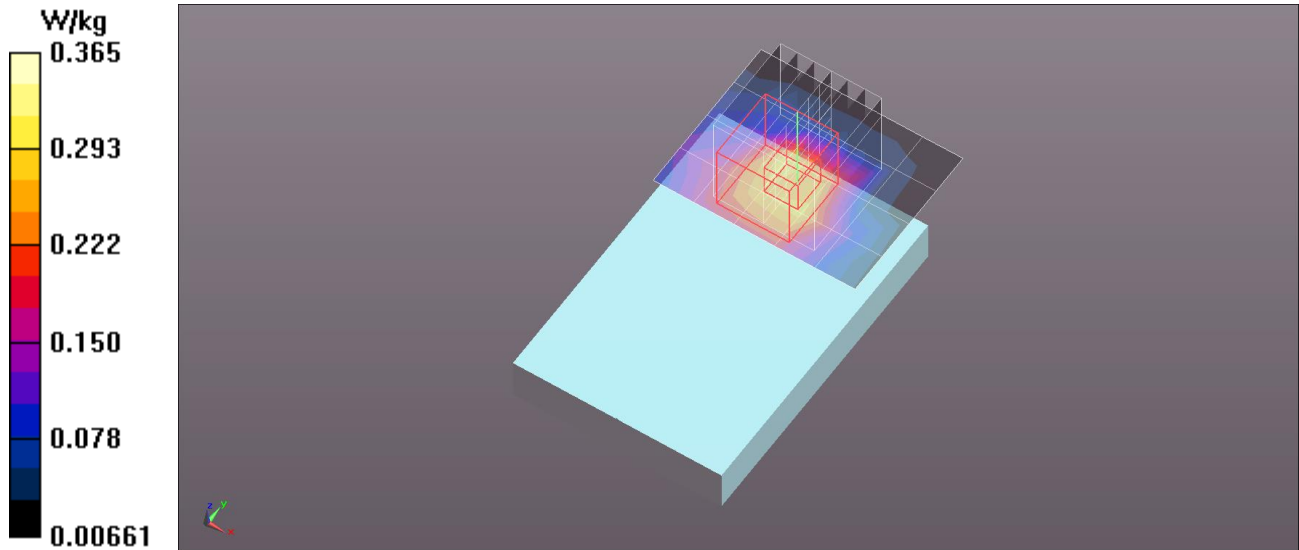
Reference Value = 7.297 V/m; Power Drift = -0.04 dB

Peak SAR (extrapolated) = 0.456 W/kg

SAR(1 g) = 0.227 W/kg; SAR(10 g) = 0.119 W/kg

[Info: Interpolated medium parameters used for SAR evaluation.](#)

Maximum value of SAR (measured) = 0.365 W/kg



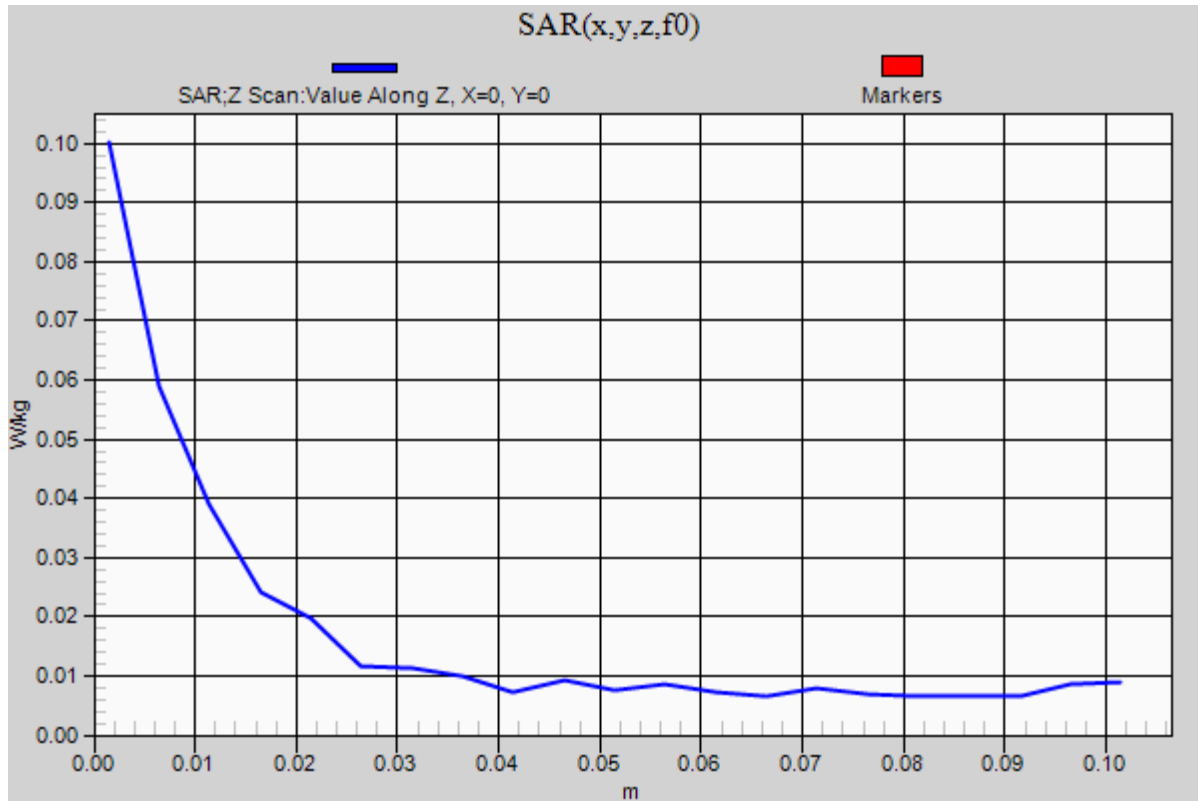
Wi-Fi 2.4GHz Band

Frequency: 2437 MHz; Duty Cycle: 1:1

Rear/Main/802.11b/CH6/Z Scan (1x1x21): Measurement grid: dx=20mm, dy=20mm, dz=5mm

Info: [Interpolated medium parameters used for SAR evaluation.](#)

Maximum value of SAR (measured) = 0.100 W/kg



Wi-Fi 2.4GHz Band

Frequency: 2437 MHz; Duty Cycle: 1:1; Room Ambient Temperature: 24.0°C; Liquid Temperature: 23.5°C

Medium parameters used (interpolated): $f = 2437$ MHz; $\sigma = 2.012$ S/m; $\epsilon_r = 52.775$; $\rho = 1000$ kg/m³

DASY5 Configuration:

- Area Scan Setting - Find Secondary Maximum Within: 2.0 dB and with a peak SAR value greater than 0.0012W/kg
- Electronics: DAE4 Sn877; Calibrated: 2017/3/20
- Probe: EX3DV4 - SN3665; ConvF(7.64, 7.64, 7.64); Calibrated: 2017/5/24;
- Sensor-Surface: 1.4mm (Mechanical Surface Detection)
- Phantom: ELI 4.0; Type: QDOVA001BA; Serial: 1056

Rear/Main/802.11n HT40/CH6/Area Scan (6x5x1): Measurement grid: dx=12mm, dy=12mm

[Info: Interpolated medium parameters used for SAR evaluation.](#)

Maximum value of SAR (measured) = 0.504 W/kg

Rear/Main/802.11n HT40/CH6/Zoom Scan (7x7x7)/Cube 0: Measurement grid: dx=5mm, dy=5mm, dz=5mm

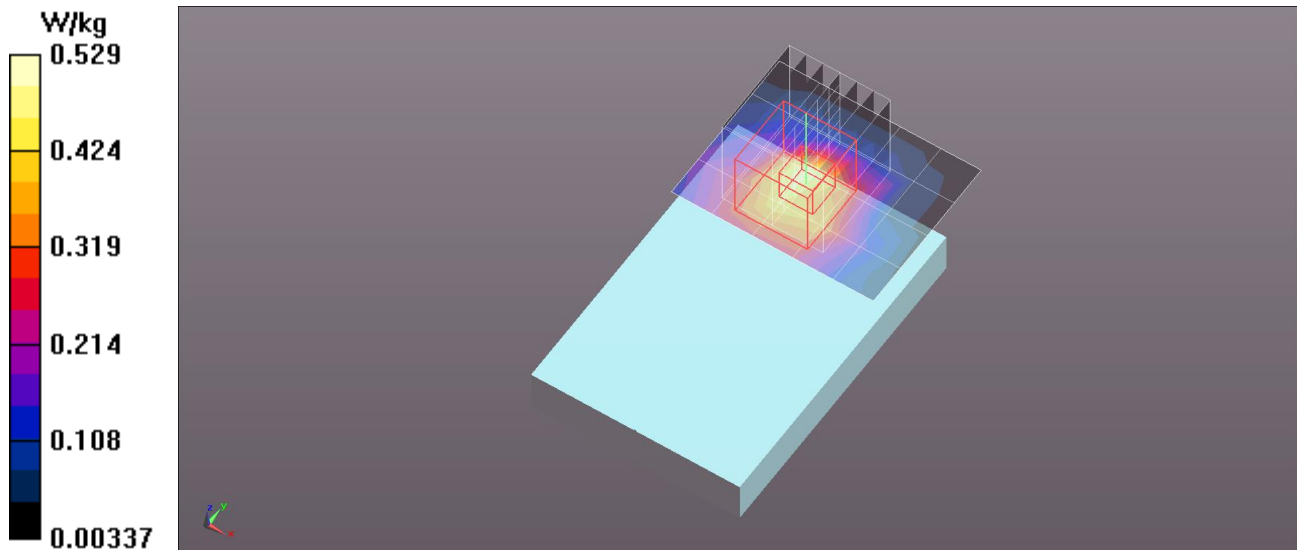
Reference Value = 8.961 V/m; Power Drift = -0.17 dB

Peak SAR (extrapolated) = 0.683 W/kg

SAR(1 g) = 0.330 W/kg; SAR(10 g) = 0.168 W/kg

[Info: Interpolated medium parameters used for SAR evaluation.](#)

Maximum value of SAR (measured) = 0.529 W/kg



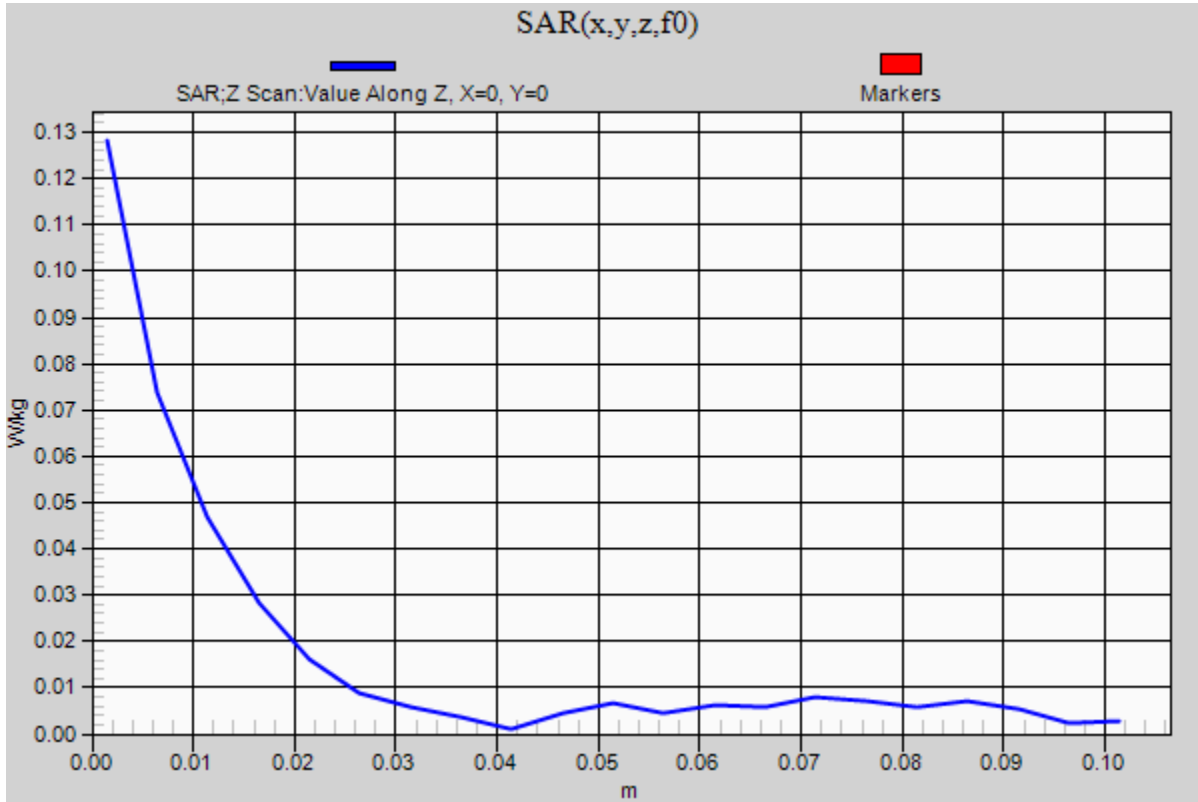
Wi-Fi 2.4GHz Band

Frequency: 2437 MHz; Duty Cycle: 1:1

Rear/Main/802.11n HT40/CH6/Z Scan (1x1x21): Measurement grid: dx=20mm, dy=20mm, dz=5mm

Info: [Interpolated medium parameters used for SAR evaluation.](#)

Maximum value of SAR (measured) = 0.128 W/kg



Wi-Fi 5GHz Band

Frequency: 5310 MHz; Duty Cycle: 1:1; Room Ambient Temperature: 24.5°C; Liquid Temperature: 24.0°C

Medium parameters used: $f = 5310.1$ MHz; $\sigma = 5.335$ S/m; $\epsilon_r = 48.111$; $\rho = 1000$ kg/m³

DASY5 Configuration:

- Area Scan Setting - Find Secondary Maximum Within: 2.0 dB and with a peak SAR value greater than 0.0012W/kg
- Electronics: DAE4 Sn877; Calibrated: 2017/3/20
- Probe: EX3DV4 - SN3665; ConvF(4.58, 4.58, 4.58); Calibrated: 2017/5/24;
- Sensor-Surface: 1.4mm (Mechanical Surface Detection (Locations From Previous Scan Used)), Sensor-Surface: 1.4mm (Mechanical Surface Detection)
- Phantom: ELI 4.0; Type: QDOVA001BA; Serial: 1056

Rear/Main/802.11nHT40/CH62/Area Scan (7x6x1): Measurement grid: dx=10mm, dy=10mm

Maximum value of SAR (measured) = 0.221 W/kg

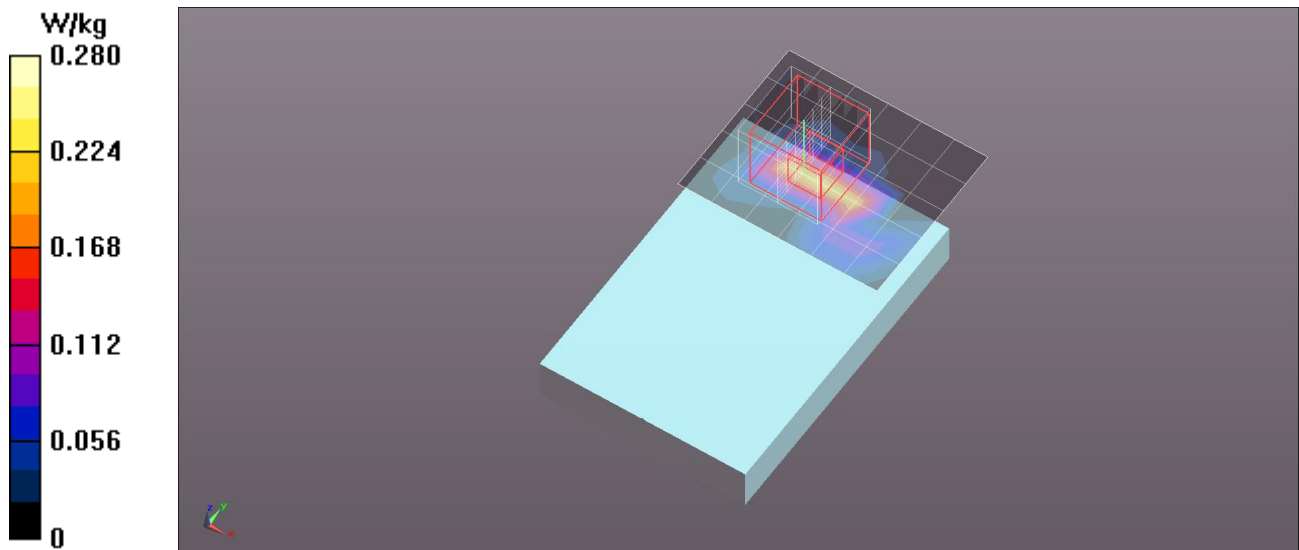
Rear/Main/802.11nHT40/CH62/Zoom Scan (7x7x12)/Cube 0: Measurement grid: dx=4mm, dy=4mm, dz=2mm

Reference Value = 0.257 V/m; Power Drift = 0.01 dB

Peak SAR (extrapolated) = 0.467 W/kg

SAR(1 g) = 0.082 W/kg; SAR(10 g) = 0.018 W/kg

Maximum value of SAR (measured) = 0.280 W/kg



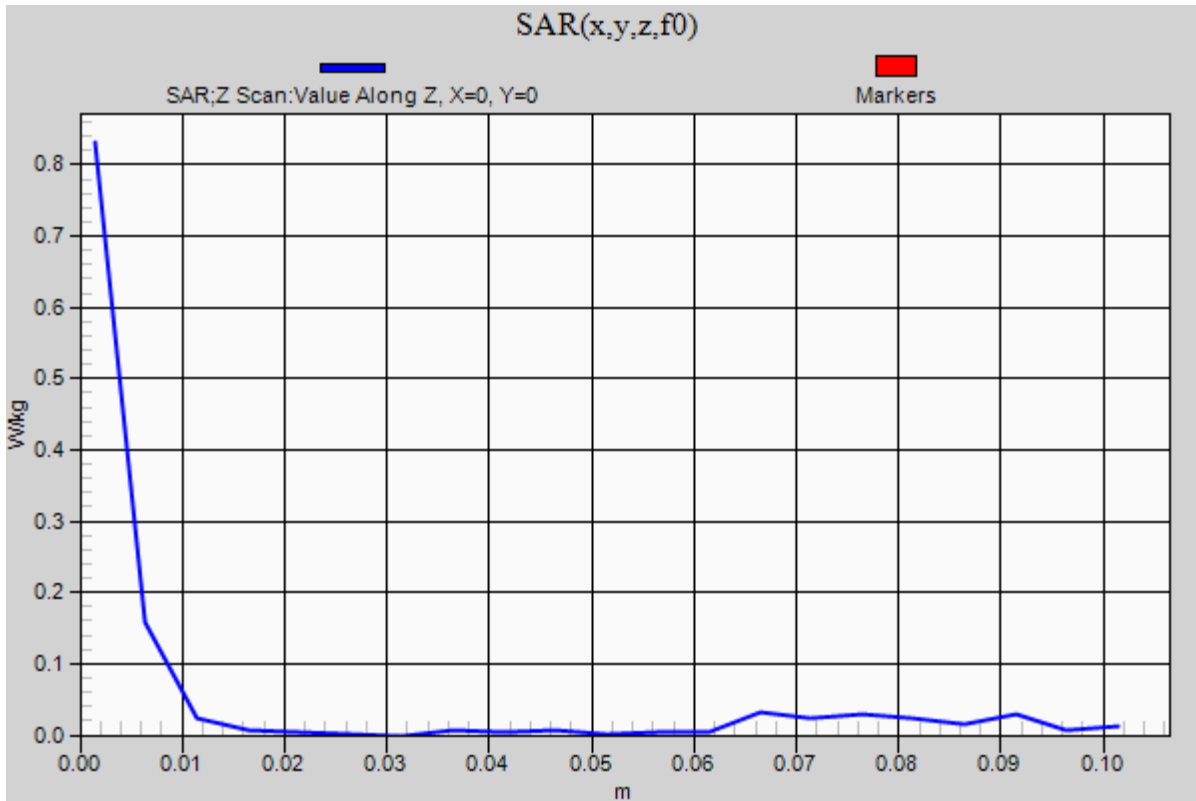
Wi-Fi 5GHz Band

Frequency: 5310 MHz; Duty Cycle: 1:1

Rear/Main/802.11nHT40/CH62/Z Scan (1x1x21): Measurement grid: dx=20mm, dy=20mm, dz=5mm

Info: [Interpolated medium parameters used for SAR evaluation.](#)

Maximum value of SAR (measured) = 0.831 W/kg



Wi-Fi 5GHz Band

Frequency: 5670 MHz; Duty Cycle: 1:1; Room Ambient Temperature: 24.5°C; Liquid Temperature: 24.0°C

Medium parameters used (interpolated): $f = 5670$ MHz; $\sigma = 5.817$ S/m; $\epsilon_r = 47.517$; $\rho = 1000$ kg/m³

DASY5 Configuration:

- Area Scan Setting - Find Secondary Maximum Within: 2.0 dB and with a peak SAR value greater than 0.0012W/kg
- Electronics: DAE4 Sn877; Calibrated: 2017/3/20
- Probe: EX3DV4 - SN3665; ConvF(3.99, 3.99, 3.99); Calibrated: 2017/5/24;
- Sensor-Surface: 1.4mm (Mechanical Surface Detection)
- Phantom: ELI 4.0; Type: QDOVA001BA; Serial: 1056

Rear/Main/802.11nHT40/CH134/Area Scan (7x6x1): Measurement grid: dx=10mm, dy=10mm

[Info: Interpolated medium parameters used for SAR evaluation.](#)

Maximum value of SAR (measured) = 0.355 W/kg

Rear/Main/802.11nHT40/CH134/Zoom Scan (7x7x12)/Cube 0: Measurement grid: dx=4mm, dy=4mm, dz=2mm

Reference Value = 1.981 V/m; Power Drift = -0.14 dB

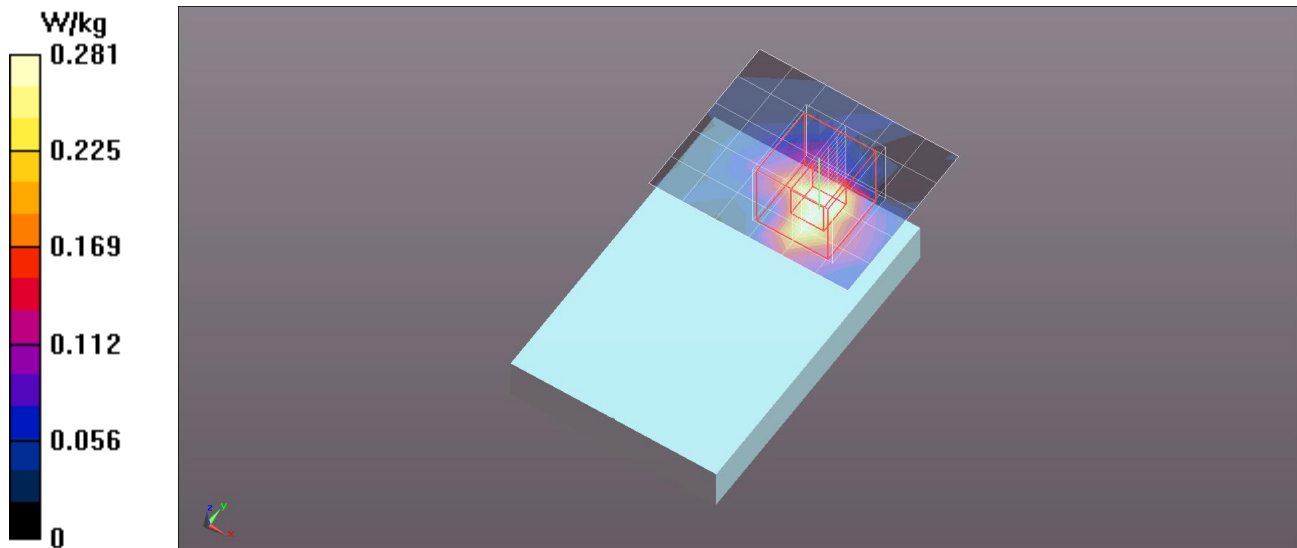
Peak SAR (extrapolated) = 0.471 W/kg

Peak SAR (extrapolated) = 0.471 W/kg

SAR(1 g) = 0.116 W/kg; SAR(10 g) = 0.046 W/kg

[Info: Interpolated medium parameters used for SAR evaluation.](#)

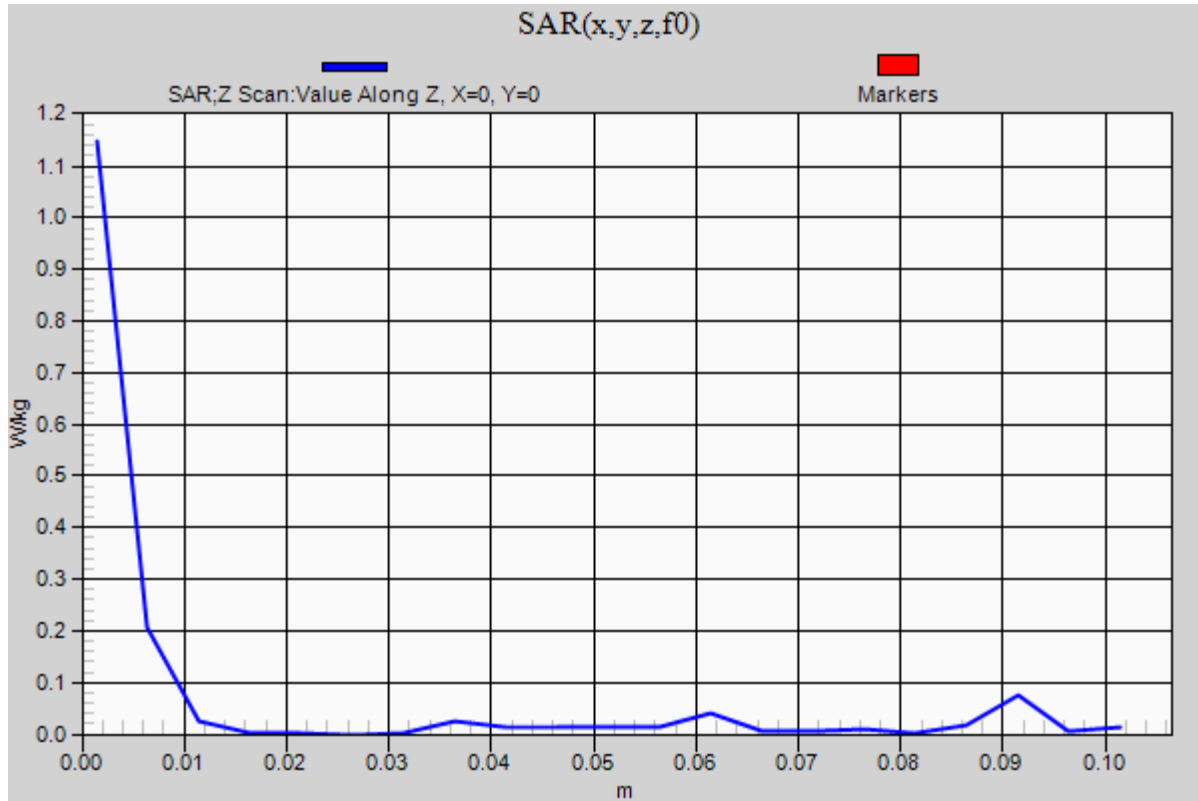
Maximum value of SAR (measured) = 0.281 W/kg



Wi-Fi 5GHz Band

Frequency: 5670 MHz; Duty Cycle: 1:1

Rear/Main/802.11nHT40/CH134/Z Scan (1x1x21): Measurement grid: dx=20mm, dy=20mm, dz=5mm
Maximum value of SAR (measured) = 1.15 W/kg



Wi-Fi 5GHz Band

Frequency: 5755 MHz; Duty Cycle: 1:1; Room Ambient Temperature: 24.5°C; Liquid Temperature: 24.0°C

Medium parameters used: $f = 5755.6$ MHz; $\sigma = 5.95$ S/m; $\epsilon_r = 47.398$; $\rho = 1000$ kg/m³

DASY5 Configuration:

- Area Scan Setting - Find Secondary Maximum Within: 2.0 dB and with a peak SAR value greater than 0.0012W/kg
- Electronics: DAE4 Sn877; Calibrated: 2017/3/20
- Probe: EX3DV4 - SN3665; ConvF(4.19, 4.19, 4.19); Calibrated: 2017/5/24;
- Sensor-Surface: 1.4mm (Mechanical Surface Detection (Locations From Previous Scan Used)), Sensor-Surface: 1.4mm (Mechanical Surface Detection)
- Phantom: ELI 4.0; Type: QDOVA001BA; Serial: 1056

Rear/Main/802.11nHT40/CH151/Area Scan (7x6x1): Measurement grid: dx=10mm, dy=10mm

Maximum value of SAR (measured) = 0.263 W/kg

Rear/Main/802.11nHT40/CH151/Zoom Scan (7x7x12)/Cube 0: Measurement grid: dx=4mm, dy=4mm, dz=2mm

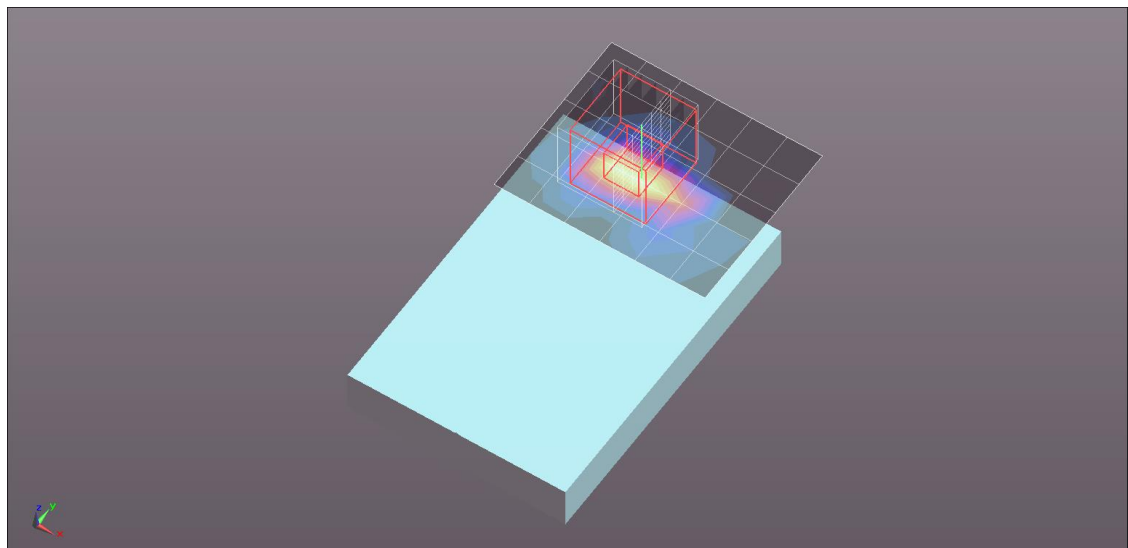
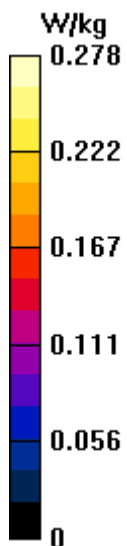
Reference Value = 1.222 V/m; Power Drift = 0.06 dB

Peak SAR (extrapolated) = 0.461 W/kg

Peak SAR (extrapolated) = 0.461 W/kg

SAR(1 g) = 0.083 W/kg; SAR(10 g) = 0.018 W/kg

Maximum value of SAR (measured) = 0.278 W/kg



Wi-Fi 5GHz Band

Frequency: 5755 MHz; Duty Cycle: 1:1

Rear/Main/802.11nHT40/CH151/Z Scan (1x1x21): Measurement grid: dx=20mm, dy=20mm, dz=5mm
Maximum value of SAR (measured) = 0.447 W/kg

