

20171110_System check_Diple2450v2 SN728

Frequency: 2450 MHz; Duty Cycle: 1:1; Room Ambient Temperature: 24.0°C; Liquid Temperature: 23.5°C

Medium parameters used (interpolated): $f = 2450$ MHz; $\sigma = 1.915$ S/m; $\epsilon_r = 51.082$; $\rho = 1000$ kg/m³

DASY5 Configuration:

- Area Scan Setting - Find Secondary Maximum Within: 2.0 dB and with a peak SAR value greater than 0.0012W/kg
- Electronics: DAE4 Sn877; Calibrated: 2017/3/20
- Probe: EX3DV4 - SN3665; ConvF(7.64, 7.64, 7.64); Calibrated: 2017/5/24;
- Sensor-Surface: 1.4mm (Mechanical Surface Detection (Locations From Previous Scan Used)), Sensor-Surface: 1.4mm (Mechanical Surface Detection)
- Phantom: ELI 4.0; Type: QDOVA001BA; Serial: 1056

Body/Pin=100mW, d=10mm 2/Area Scan (10x11x1): Measurement grid: dx=12mm, dy=12mm

[Info: Interpolated medium parameters used for SAR evaluation.](#)

Maximum value of SAR (measured) = 7.49 W/kg

Body/Pin=100mW, d=10mm 2/Zoom Scan (7x7x7)/Cube 0: Measurement grid: dx=5mm, dy=5mm, dz=5mm

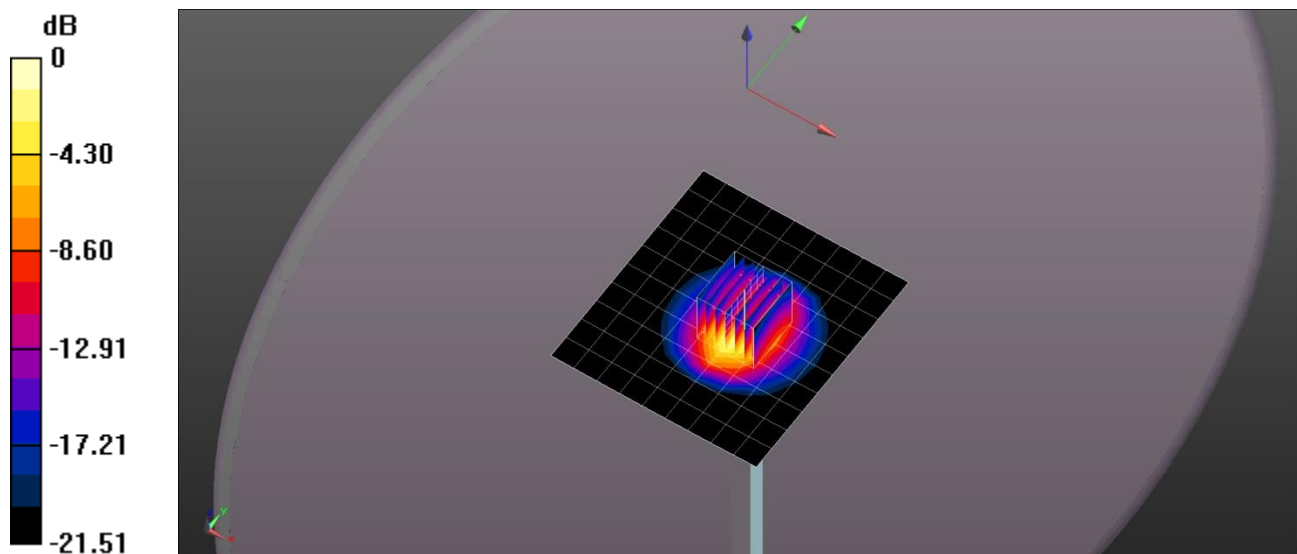
Reference Value = 75.51 V/m; Power Drift = -0.08 dB

Peak SAR (extrapolated) = 10.3 W/kg

SAR(1 g) = 5.13 W/kg; SAR(10 g) = 2.42 W/kg

[Info: Interpolated medium parameters used for SAR evaluation.](#)

Maximum value of SAR (measured) = 8.39 W/kg



0 dB = 8.39 W/kg = 9.24 dBW/kg

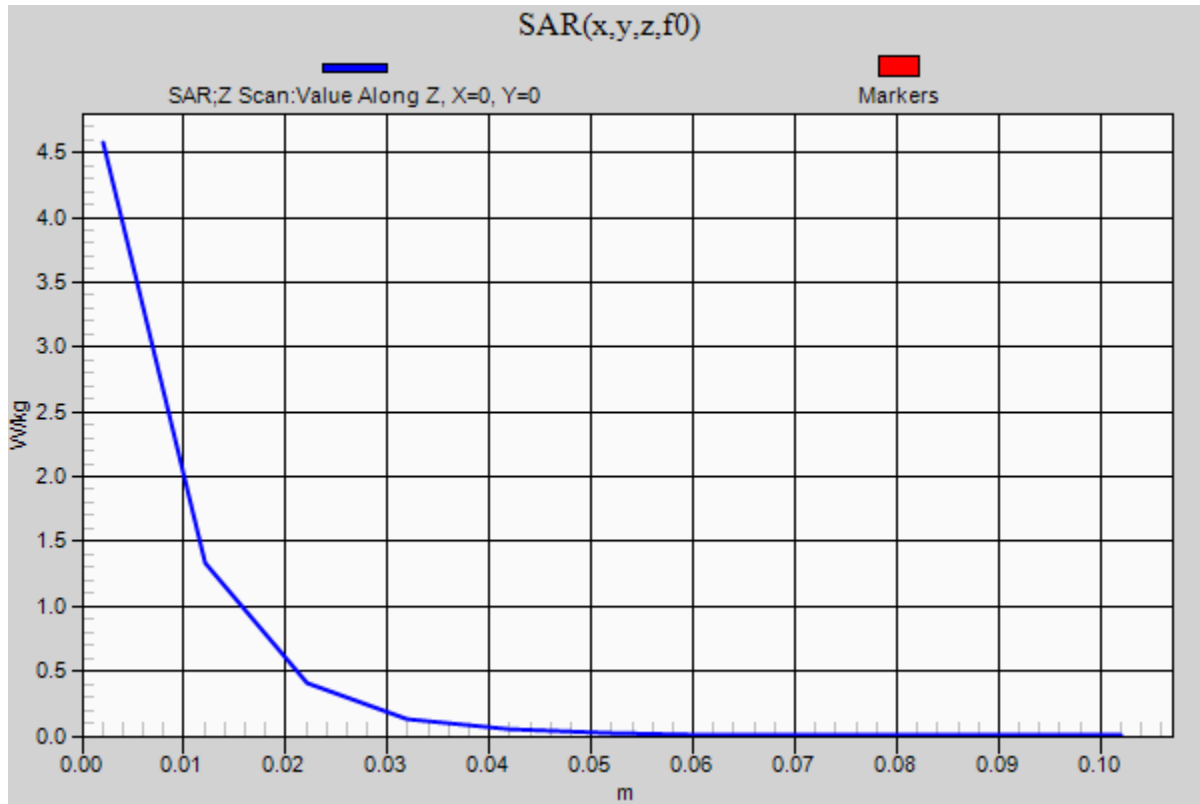
20171110_System check_Diple2450v2 SN728

Frequency: 2450 MHz; Duty Cycle: 1:1

Body/Pin=100mW, d=10mm 2/Z Scan (1x1x11): Measurement grid: dx=20mm, dy=20mm, dz=10mm

Info: [Interpolated medium parameters used for SAR evaluation.](#)

Maximum value of SAR (measured) = 4.57 W/kg



20171111_System check_Diple5GHzv2 SN1004

Frequency: 5300 MHz; Duty Cycle: 1:1; Room Ambient Temperature: 24.5°C; Liquid Temperature: 24.0°C

Medium parameters used: $f = 5300.2 \text{ MHz}$; $\sigma = 5.48 \text{ S/m}$; $\epsilon_r = 47.419$; $\rho = 1000 \text{ kg/m}^3$

DASY5 Configuration:

- Area Scan Setting - Find Secondary Maximum Within: 2.0 dB and with a peak SAR value greater than 0.0012W/kg
- Electronics: DAE4 Sn877; Calibrated: 2017/3/20
- Probe: EX3DV4 - SN3665; ConvF(4.58, 4.58, 4.58); Calibrated: 2017/5/24;
- Sensor-Surface: 1.4mm (Mechanical Surface Detection)
- Phantom: ELI 4.0; Type: QDOVA001BA; Serial: 1056

Body/5300MHz,Pin=100mW,d=10mm/Area Scan (7x7x1): Measurement grid: dx=10mm, dy=10mm

Maximum value of SAR (measured) = 20.5 W/kg

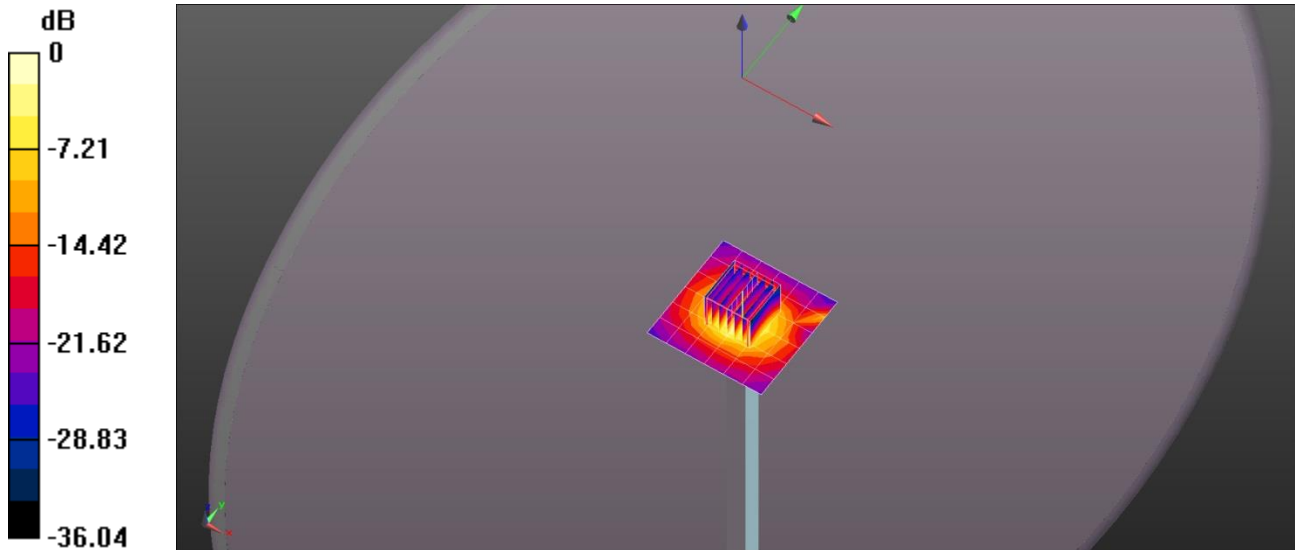
Body/5300MHz,Pin=100mW,d=10mm/Zoom Scan (7x7x6)/Cube 0: Measurement grid: dx=4mm,

dy=4mm, dz=1.4mm

Reference Value = 40.59 V/m; Power Drift = 0.04 dB

Peak SAR (extrapolated) = 35.0 W/kg

SAR(1 g) = 7.96 W/kg; SAR(10 g) = 2.31 W/kg



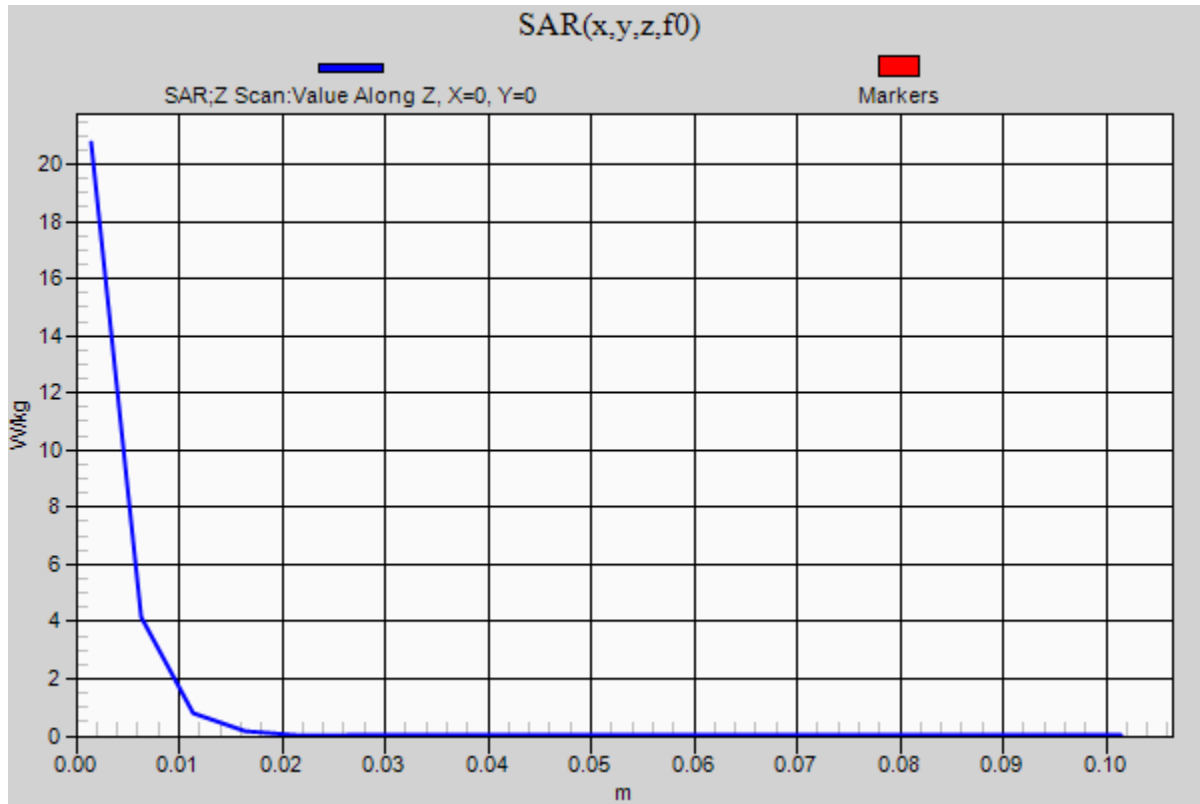
0 dB = 20.5 W/kg = 13.12 dBW/kg

20171111_System check_Diple5GHzv2 SN1004

Frequency: 5300 MHz; Duty Cycle: 1:1

Body/5300MHz,Pin=100mW,d=10mm/Z Scan (1x1x21): Measurement grid: dx=20mm, dy=20mm, dz=5mm

Maximum value of SAR (measured) = 20.7 W/kg



20171111_System check_Diple5GHzv2 SN1004

Frequency: 5600 MHz; Duty Cycle: 1:1; Room Ambient Temperature: 24.5°C; Liquid Temperature: 24.0°C

Medium parameters used: $f = 5600.5$ MHz; $\sigma = 5.847$ S/m; $\epsilon_r = 47.065$; $\rho = 1000$ kg/m³

DASY5 Configuration:

- Area Scan Setting - Find Secondary Maximum Within: 2.0 dB and with a peak SAR value greater than 0.0012W/kg
- Electronics: DAE4 Sn877; Calibrated: 2017/3/20
- Probe: EX3DV4 - SN3665; ConvF(3.99, 3.99, 3.99); Calibrated: 2017/5/24;
- Sensor-Surface: 1.4mm (Mechanical Surface Detection)
- Phantom: ELI 4.0; Type: QDOVA001BA; Serial: 1056

Body/5600MHz,Pin=100mW,d=10mm/Area Scan (7x7x1): Measurement grid: dx=10mm, dy=10mm

Maximum value of SAR (measured) = 20.8 W/kg

Body/5600MHz,Pin=100mW,d=10mm/Zoom Scan (7x7x6)/Cube 0: Measurement grid: dx=4mm,

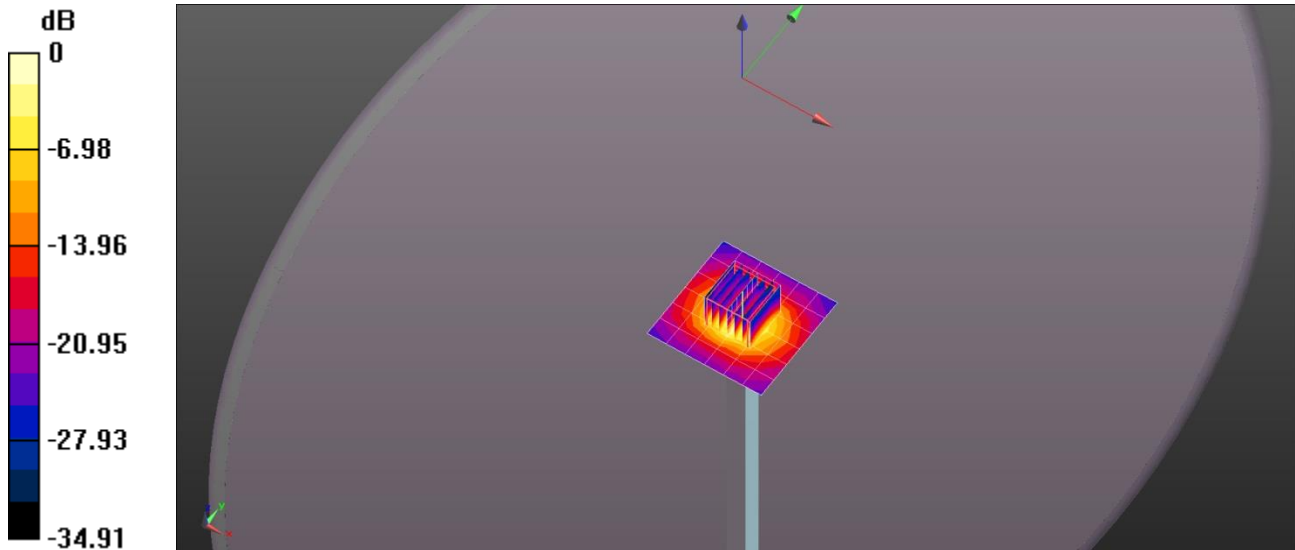
dy=4mm, dz=1.4mm

Reference Value = 39.84 V/m; Power Drift = -0.07 dB

Peak SAR (extrapolated) = 35.0 W/kg

SAR(1 g) = 7.93 W/kg; SAR(10 g) = 2.28 W/kg

Maximum value of SAR (measured) = 20.7 W/kg



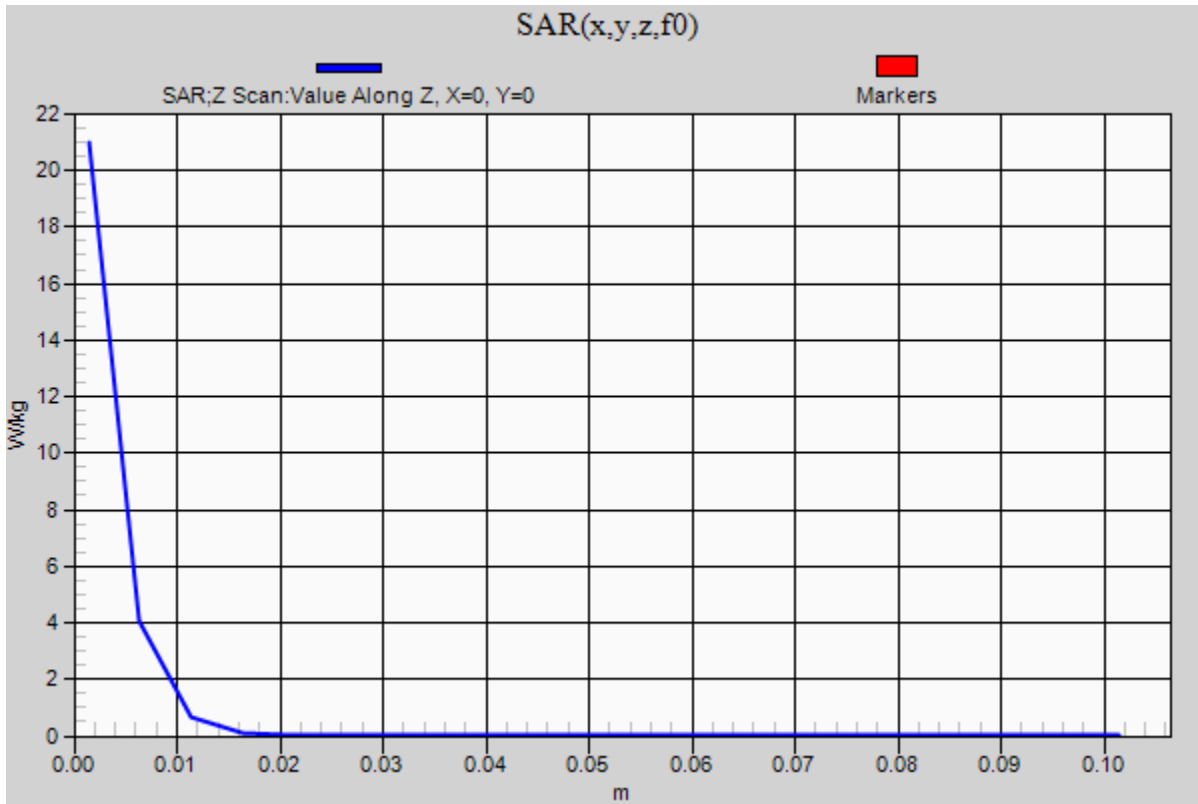
0 dB = 20.7 W/kg = 13.16 dBW/kg

20171111_System check_Diple5GHzv2 SN1004

Frequency: 5600 MHz; Duty Cycle: 1:1

Body/5600MHz,Pin=100mW,d=10mm/Z Scan (1x1x21): Measurement grid: dx=20mm, dy=20mm, dz=5mm

Maximum value of SAR (measured) = 21.0 W/kg



20171111_System check_Diple5GHzv2 SN1004

Frequency: 5800 MHz; Duty Cycle: 1:1; Room Ambient Temperature: 24.5°C; Liquid Temperature: 24.0°C

Medium parameters used (interpolated): $f = 5800 \text{ MHz}$; $\sigma = 6.14 \text{ S/m}$; $\epsilon_r = 46.457$; $\rho = 1000 \text{ kg/m}^3$

DASY5 Configuration:

- Area Scan Setting - Find Secondary Maximum Within: 2.0 dB and with a peak SAR value greater than 0.0012W/kg
- Electronics: DAE4 Sn877; Calibrated: 2017/3/20
- Probe: EX3DV4 - SN3665; ConvF(4.19, 4.19, 4.19); Calibrated: 2017/5/24;
- Sensor-Surface: 1.4mm (Mechanical Surface Detection)
- Phantom: ELI 4.0; Type: QDOVA001BA; Serial: 1056

Body/5800MHz,Pin=100mW,d=10mm/Area Scan (7x7x1): Measurement grid: dx=10mm, dy=10mm

[Info: Interpolated medium parameters used for SAR evaluation.](#)

Maximum value of SAR (measured) = 19.5 W/kg

Body/5800MHz,Pin=100mW,d=10mm/Zoom Scan (7x7x6)/Cube 0: Measurement grid: dx=4mm,

dy=4mm, dz=1.4mm

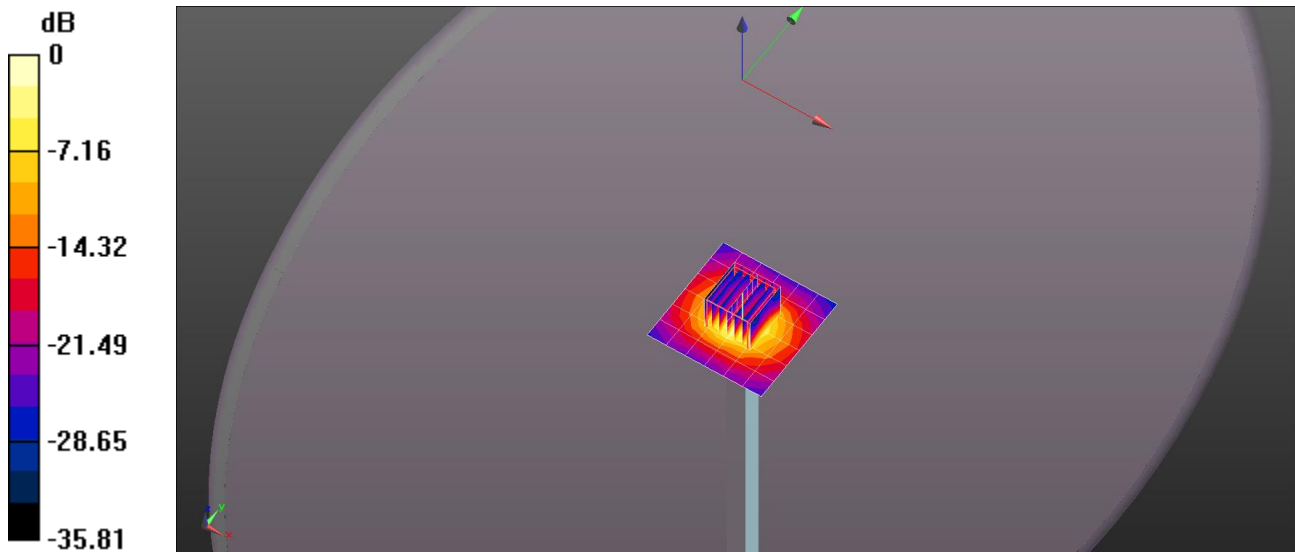
Reference Value = 36.95 V/m; Power Drift = 0.01 dB

Peak SAR (extrapolated) = 34.5 W/kg

SAR(1 g) = 7.44 W/kg; SAR(10 g) = 2.14 W/kg

[Info: Interpolated medium parameters used for SAR evaluation.](#)

Maximum value of SAR (measured) = 19.8 W/kg



0 dB = 19.8 W/kg = 12.97 dBW/kg

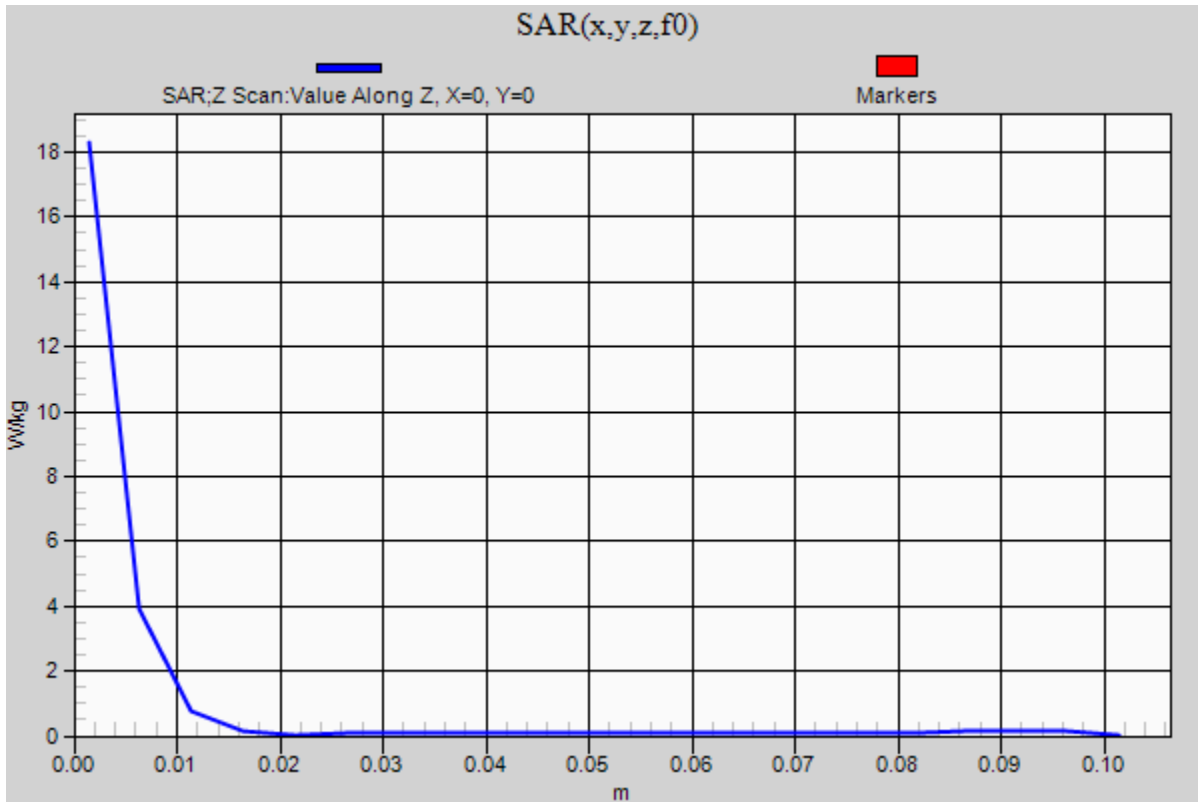
20171111_System check_Diple5GHzv2 SN1004

Frequency: 5800 MHz; Duty Cycle: 1:1

Body/5200MHz,Pin=100mW,d=10mm/Z Scan (1x1x21): Measurement grid: dx=20mm, dy=20mm, dz=5mm

Info: [Interpolated medium parameters used for SAR evaluation.](#)

Maximum value of SAR (measured) = 18.3 W/kg



20171201_System check_Diple2450v2 SN728

Frequency: 2450 MHz; Duty Cycle: 1:1; Room Ambient Temperature: 24.0°C; Liquid Temperature: 23.5°C

Medium parameters used (interpolated): $f = 2450$ MHz; $\sigma = 1.978$ S/m; $\epsilon_r = 51.82$; $\rho = 1000$ kg/m³

DASY5 Configuration:

- Area Scan Setting - Find Secondary Maximum Within: 2.0 dB and with a peak SAR value greater than 0.0012W/kg
- Electronics: DAE4 Sn877; Calibrated: 2017/3/20
- Probe: EX3DV4 - SN3665; ConvF(7.64, 7.64, 7.64); Calibrated: 2017/5/24;
- Sensor-Surface: 1.4mm (Mechanical Surface Detection)
- Phantom: ELI 4.0; Type: QDOVA001BA; Serial: 1056

Body/Pin=100mW, d=10mm/Area Scan (9x11x1): Measurement grid: dx=12mm, dy=12mm

[Info: Interpolated medium parameters used for SAR evaluation.](#)

Maximum value of SAR (measured) = 7.14 W/kg

Body/Pin=100mW, d=10mm/Zoom Scan (7x7x7)/Cube 0: Measurement grid: dx=5mm, dy=5mm, dz=5mm

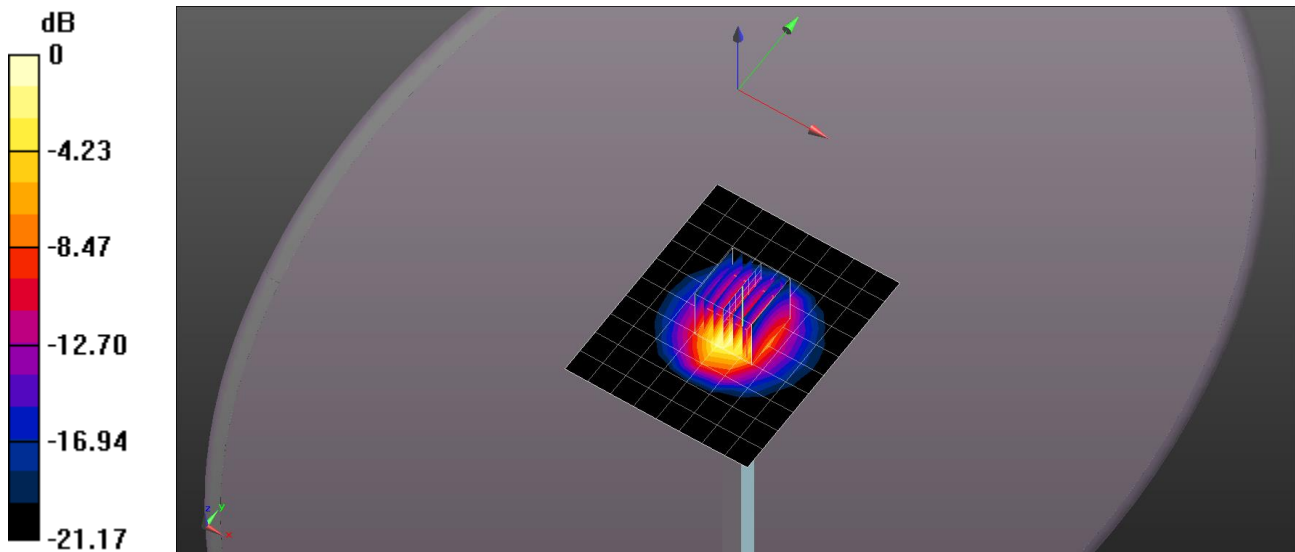
Reference Value = 76.34 V/m; Power Drift = -0.05 dB

Peak SAR (extrapolated) = 10.0 W/kg

SAR(1 g) = 4.95 W/kg; SAR(10 g) = 2.34 W/kg

[Info: Interpolated medium parameters used for SAR evaluation.](#)

Maximum value of SAR (measured) = 8.13 W/kg



0 dB = 8.13 W/kg = 9.10 dBW/kg

20171201_System check_Diple2450v2 SN728

Frequency: 2450 MHz; Duty Cycle: 1:1

Body/Pin=100mW, d=10mm/Z Scan (1x1x11): Measurement grid: dx=20mm, dy=20mm, dz=10mm

Info: [Interpolated medium parameters used for SAR evaluation.](#)

Maximum value of SAR (measured) = 4.90 W/kg

