

#01_WLAN2.4GHz_802.11b 1Mbps_Edge 1_0mm_Ch1;Ant 2

Communication System: 802.11b; Frequency: 2412 MHz; Duty Cycle: 1:1
Medium: MSL_2450_160105 Medium parameters used: $f = 2412$ MHz; $\sigma = 1.985$ mho/m; $\epsilon_r = 54.481$; $\rho = 1000$ kg/m³
Ambient Temperature : 23.5 °C; Liquid Temperature : 22.5 °C

DASY5 Configuration:

- Probe: EX3DV4 - SN3578; ConvF(6.95, 6.95, 6.95); Calibrated: 2015/3/31;
- Sensor-Surface: 1.4mm (Mechanical Surface Detection)
- Electronics: DAE4 Sn1399; Calibrated: 2015/11/23
- Phantom: ELI 4.0_Left; Type: QDOVA001BB; Serial: 1026
- Measurement SW: DASY52, Version 52.8 (1); SEMCAD X Version 14.6.5 (6469)

Configuration/Ch1/Area Scan (61x131x1): Measurement grid: dx=12mm, dy=12mm
Maximum value of SAR (interpolated) = 0.469 mW/g

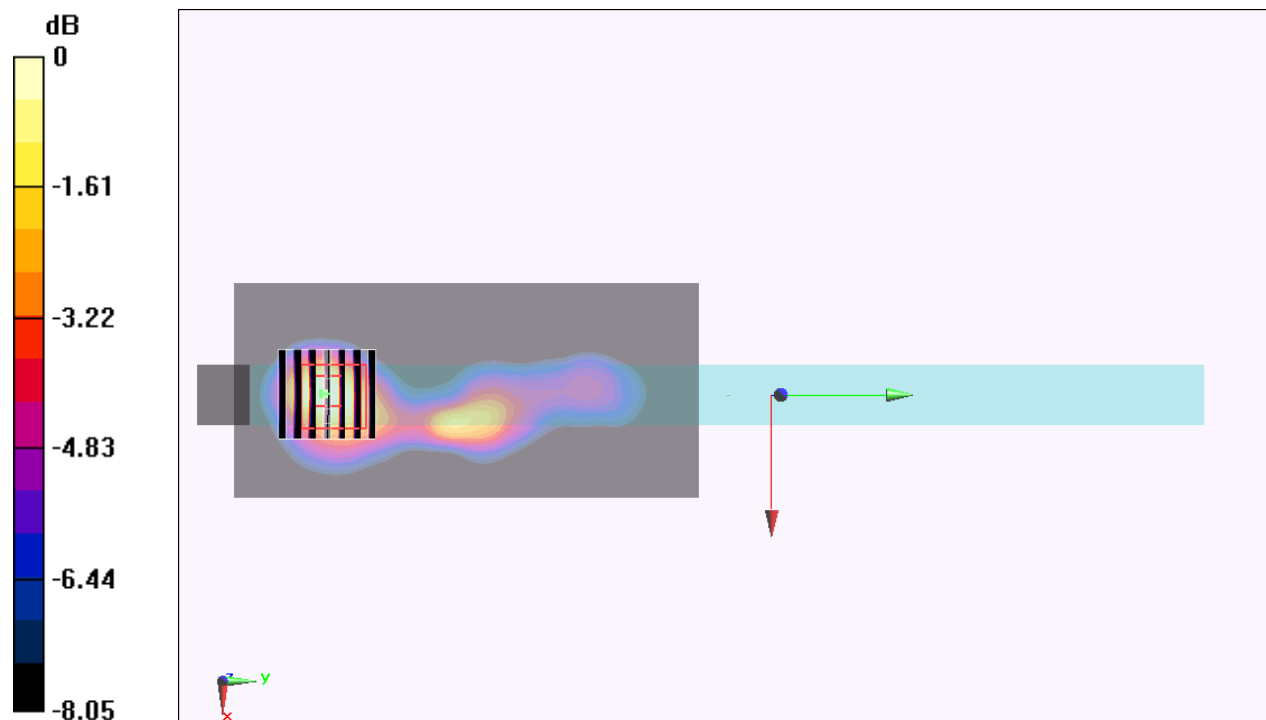
Configuration/Ch1/Zoom Scan (7x7x7)/Cube 0: Measurement grid: dx=5mm, dy=5mm, dz=5mm

Reference Value = 15.316 V/m; Power Drift = -0.15 dB

Peak SAR (extrapolated) = 0.526 mW/g

SAR(1 g) = 0.290 mW/g; SAR(10 g) = 0.149 mW/g

Maximum value of SAR (measured) = 0.437 mW/g



0 dB = 0.437 mW/g = -7.19 dB mW/g