

Test Laboratory: Compliance Certification Services Inc.

D2450V2 SN-728 Body

DUT: Dipole 2450 MHz; Type: D2450V2; Serial: D2450V2 - SN:728

Communication System: CW2450; Frequency: 2450 MHz; Duty Cycle: 1:1

Medium parameters used (interpolated): $f = 2450$ MHz; $\sigma = 2.01$ mho/m; $\epsilon_r = 51.5$; $\rho = 1000$ kg/m³

Phantom section: Flat Section

Air Temperature: 24.6 deg C; Liquid Temperature: 23.6 deg C

Area Scan Find Secondary Maximum Within 2dB and with a peak SAR value greater than 0.0012W/kg

DASY4 Configuration:

- Probe: EX3DV4 - SN3554; ConvF(5.8, 5.8, 5.8);
- Sensor-Surface: 2.5mm (Mechanical Surface Detection) Sensor-Surface: 0mm (Fix Surface)
- Electronics: DAE4 Sn558; Calibrated: 2009/7/17
- Phantom: Flat Phantom ELI4.0; Type: QDOVA001BA; Serial: SN: 1052
- Measurement SW: DASY4, V4.7 Build 80; Postprocessing SW: SEMCAD, V1.8 Build 186

Pin=250mW,d=10mm/Area Scan (6x6x1): Measurement grid: dx=15mm, dy=15mm

Maximum value of SAR (measured) = 14.4 mW/g

Pin=250mW,d=10mm/Zoom Scan (7x7x7)/Cube 0: Measurement grid: dx=5mm, dy=5mm, dz=5mm

Reference Value = 98.2 V/m; Power Drift = -0.062 dB

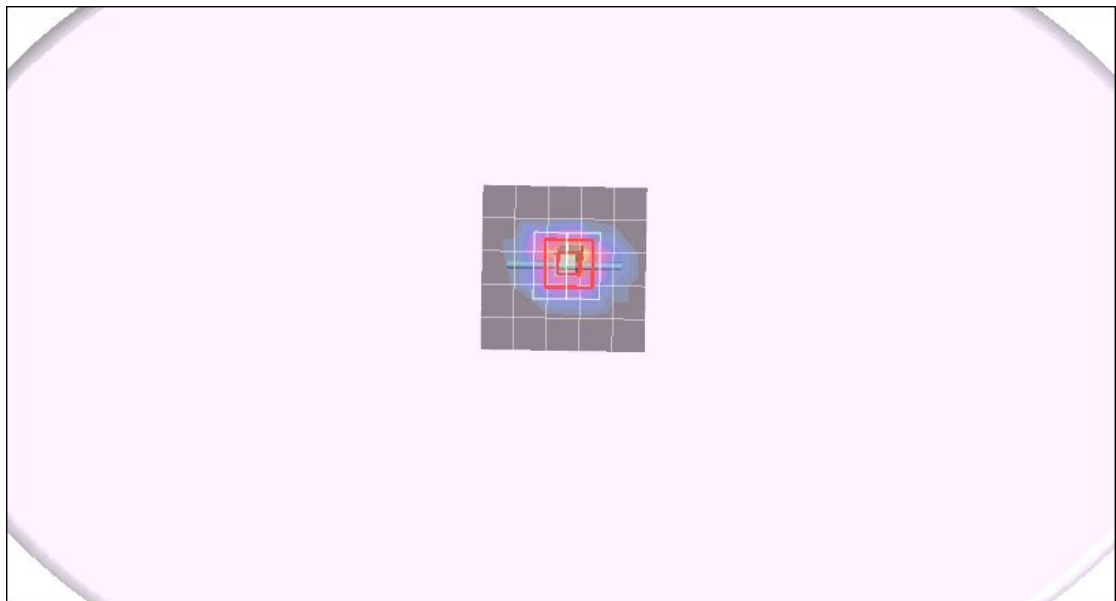
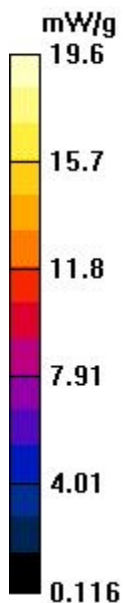
Peak SAR (extrapolated) = 28.6 W/kg

SAR(1 g) = 13.2 mW/g; SAR(10 g) = 5.99 mW/g.

Maximum value of SAR (measured) = 19.6 mW/g

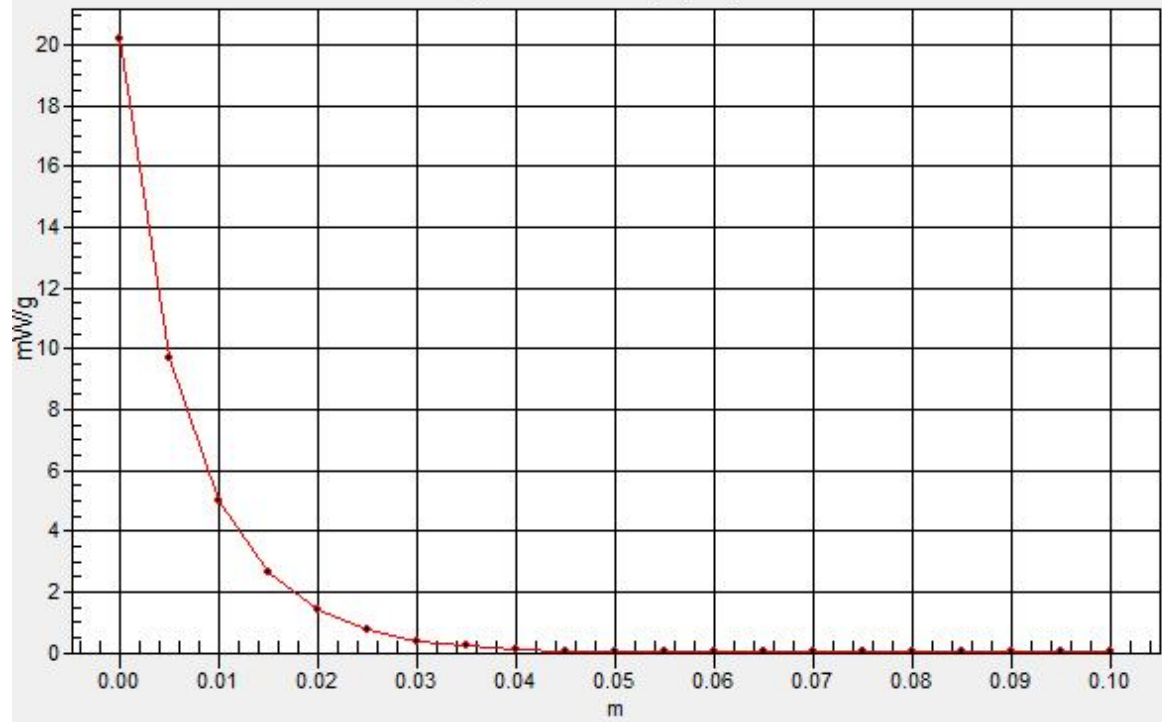
Pin=250mW,d=10mm/Z Scan (1x1x21): Measurement grid: dx=20mm, dy=20mm, dz=5mm

Maximum value of SAR (measured) = 20.2 mW/g



SAR(x,y,z,f0)

SAR; Z Scan: Value Along Z, X=0, Y=0



Test Laboratory: Compliance Certification Services Inc.

80211b Body Bottom Flated mode RTL8191SE antenna A 57Wh

DUT: RTL8191SE; Type: RTL8191SE; Serial: N/A

Communication System: IEEE 802.11b WLAN; Frequency: 2412 MHz; Duty Cycle: 1:1

Medium parameters used: $f = 2412$ MHz; $\sigma = 1.93$ mho/m; $\epsilon_r = 51.8$; $\rho = 1000$ kg/m³

Phantom section: Flat Section

Air Temperature: 24.6 deg C; Liquid Temperature: 23.6 deg C

Area Scan Find Secondary Maximum Within 2dB and with a peak SAR value greater than 0.0012W/kg

DASY4 Configuration:

- Probe: EX3DV4 - SN3554; ConvF(5.8, 5.8, 5.8);
- Sensor-Surface: 2.5mm (Mechanical Surface Detection)
- Electronics: DAE4 Sn558; Calibrated: 2009/7/17
- Phantom: Flat Phantom ELI4.0; Type: QDOVA001BA; Serial: SN: 1052
- Measurement SW: DASY4, V4.7 Build 80; Postprocessing SW: SEMCAD, V1.8 Build 186

80211b Low CH1/Area Scan (9x23x1): Measurement grid: dx=15mm,
dy=15mm

Maximum value of SAR (measured) = 0.033 mW/g

80211b Low CH1/Zoom Scan (7x7x9)/Cube 0: Measurement grid:
dx=5mm, dy=5mm, dz=3mm

Reference Value = 0.964 V/m; Power Drift = -0.133 dB

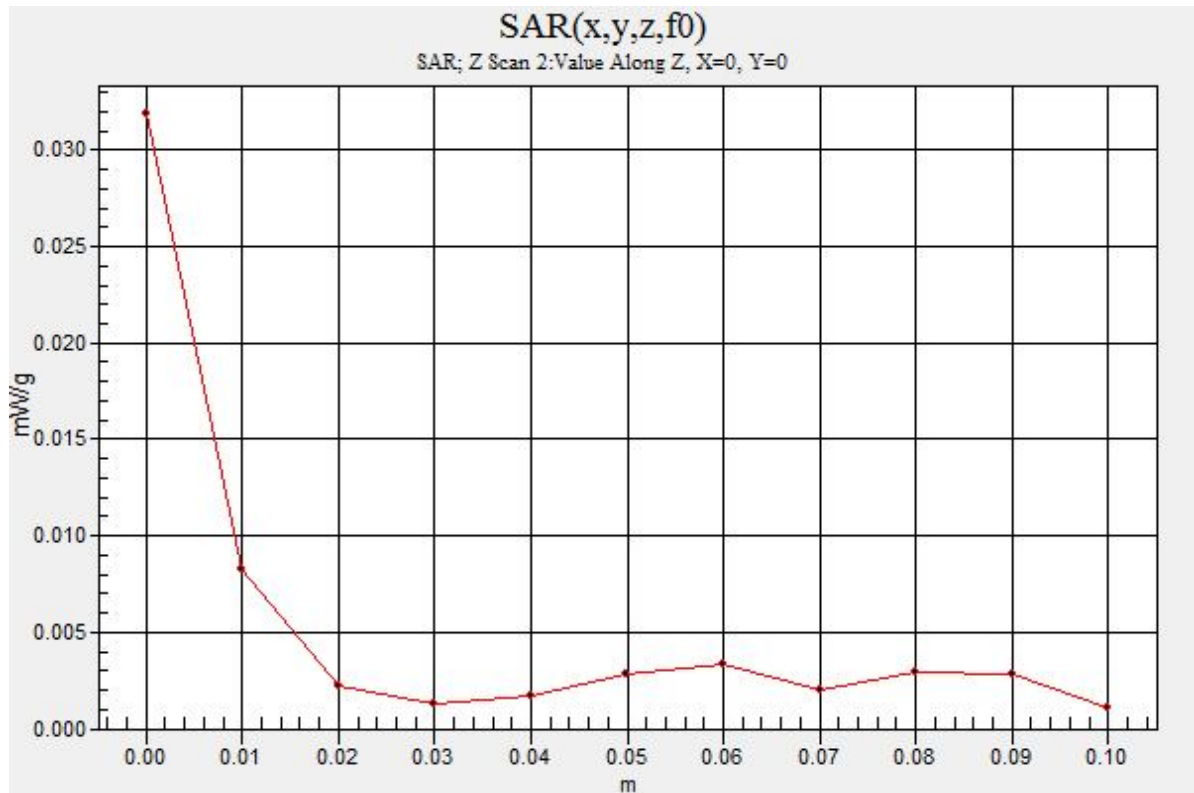
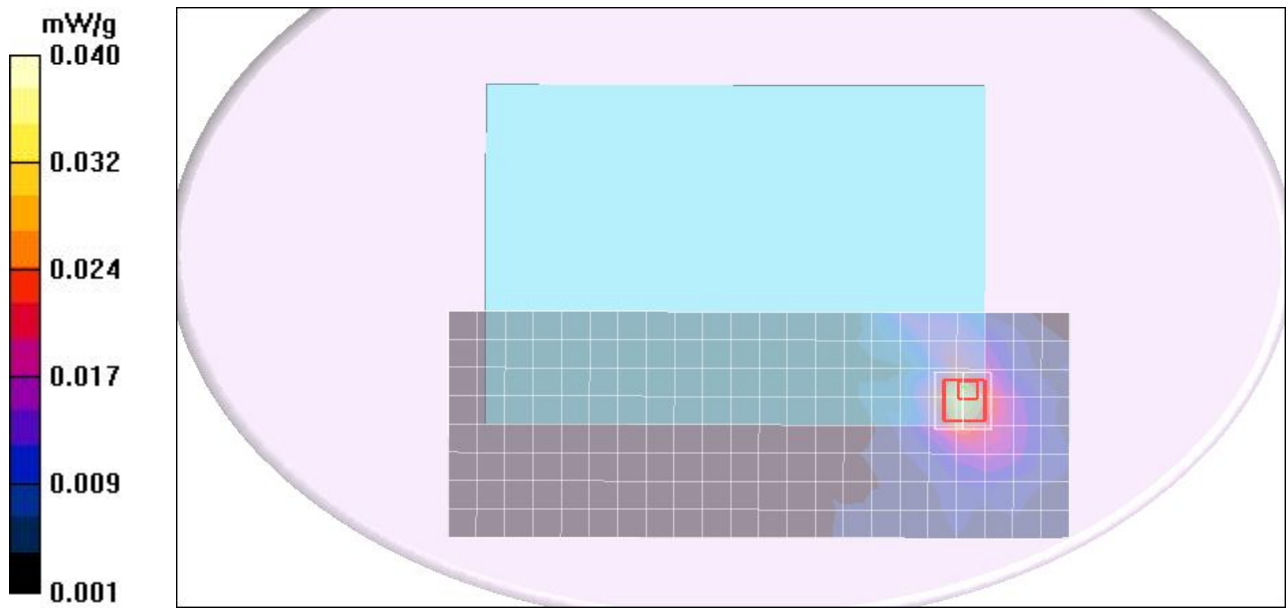
Peak SAR (extrapolated) = 0.032 W/kg

SAR(1 g) = 0.012 mW/g; SAR(10 g) = 0.008 mW/g

Maximum value of SAR (measured) = 0.029 mW/g

80211b Low CH1/Z Scan (1x1x11): Measurement grid: dx=20mm, dy=20mm,
dz=10mm

Maximum value of SAR (measured) = 0.032 mW/g



Test Laboratory: Compliance Certification Services Inc.

80211b Body Bottom Flated mode RTL8191SE antenna A 52Wh

DUT: RTL8191SE; Type: RTL8191SE; Serial: N/A

Communication System: IEEE 802.11b WLAN; Frequency: 2412 MHz; Duty Cycle: 1:1

Medium parameters used: $f = 2412$ MHz; $\sigma = 1.93$ mho/m; $\epsilon_r = 51.8$; $\rho = 1000$ kg/m³

Phantom section: Flat Section

Air Temperature: 24.6 deg C; Liquid Temperature: 23.6 deg C

Area Scan Find Secondary Maximum Within 2dB and with a peak SAR value greater than 0.0012W/kg

DASY4 Configuration:

- Probe: EX3DV4 - SN3554; ConvF(5.8, 5.8, 5.8);
- Sensor-Surface: 2.5mm (Mechanical Surface Detection)
- Electronics: DAE4 Sn558; Calibrated: 2009/7/17
- Phantom: Flat Phantom ELI4.0; Type: QDOVA001BA; Serial: SN: 1052
- Measurement SW: DASY4, V4.7 Build 80; Postprocessing SW: SEMCAD, V1.8 Build 186

80211b Low CH1/Area Scan (9x23x1): Measurement grid: dx=15mm, dy=15mm

Maximum value of SAR (measured) = 0.030 mW/g

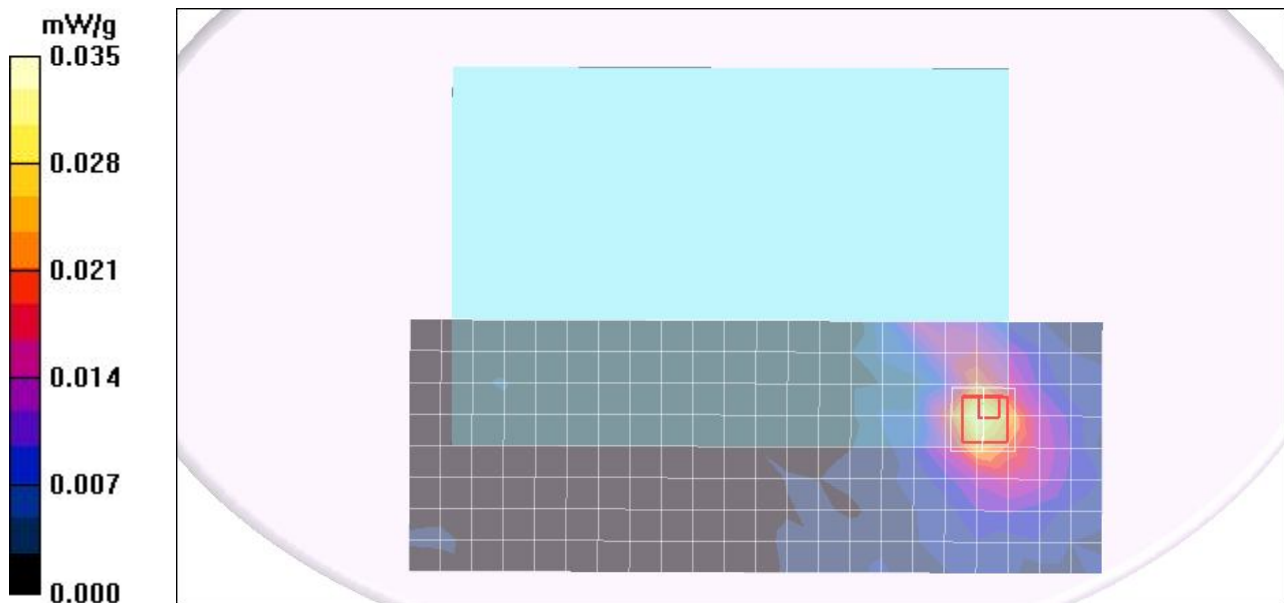
80211b Low CH1/Zoom Scan (7x7x9)/Cube 0: Measurement grid: dx=5mm, dy=5mm, dz=3mm

Reference Value = 0.000 V/m; Power Drift = -0.106 dB

Peak SAR (extrapolated) = 0.030 W/kg

SAR(1 g) = 0.010 mW/g; SAR(10 g) = 0.006 mW/g

Maximum value of SAR (measured) = 0.028 mW/g



Test Laboratory: Compliance Certification Services Inc.

80211b Body Bottom Flated mode RTL8191SE antenna A 23Wh

DUT: RTL8191SE; Type: RTL8191SE; Serial: N/A

Communication System: IEEE 802.11b WLAN; Frequency: 2412 MHz; Duty Cycle: 1:1

Medium parameters used: $f = 2412$ MHz; $\sigma = 1.93$ mho/m; $\epsilon_r = 51.8$; $\rho = 1000$ kg/m³

Phantom section: Flat Section

Air Temperature: 24.6 deg C; Liquid Temperature: 23.6 deg C

Area Scan Find Secondary Maximum Within 2dB and with a peak SAR value greater than 0.0012W/kg

DASY4 Configuration:

- Probe: EX3DV4 - SN3554; ConvF(5.8, 5.8, 5.8);
- Sensor-Surface: 2.5mm (Mechanical Surface Detection)
- Electronics: DAE4 Sn558; Calibrated: 2009/7/17
- Phantom: Flat Phantom ELI4.0; Type: QDOVA001BA; Serial: SN: 1052
- Measurement SW: DASY4, V4.7 Build 80; Postprocessing SW: SEMCAD, V1.8 Build 186

80211b Low CH1/Area Scan (9x23x1): Measurement grid: dx=15mm, dy=15mm

Maximum value of SAR (measured) = 0.023 mW/g

80211b Low CH1/Zoom Scan (7x7x9)/Cube 0: Measurement grid: dx=5mm, dy=5mm, dz=3mm

Reference Value = 0.000 V/m; Power Drift = -0.124 dB

Peak SAR (extrapolated) = 0.022 W/kg

SAR(1 g) = 0.00825 mW/g; SAR(10 g) = 0.00578 mW/g

Maximum value of SAR (measured) = 0.021 mW/g

