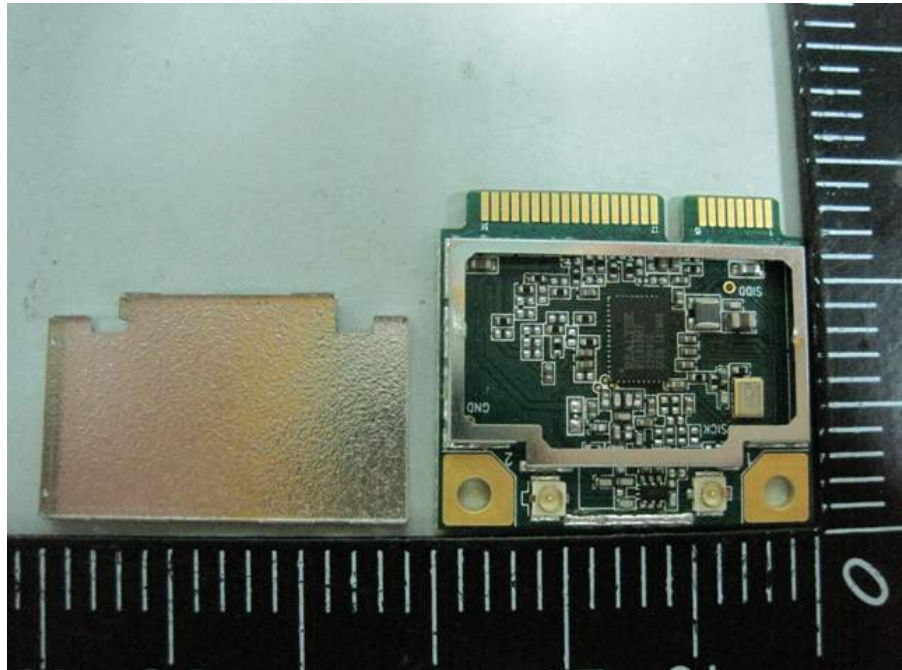


Photographs of EUT

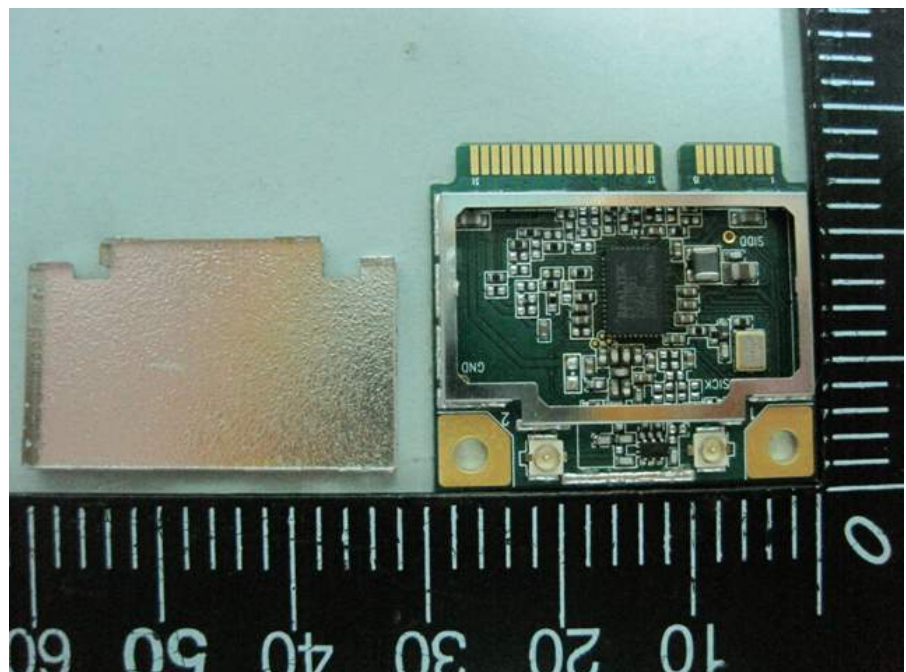
Mode: Second source Mode

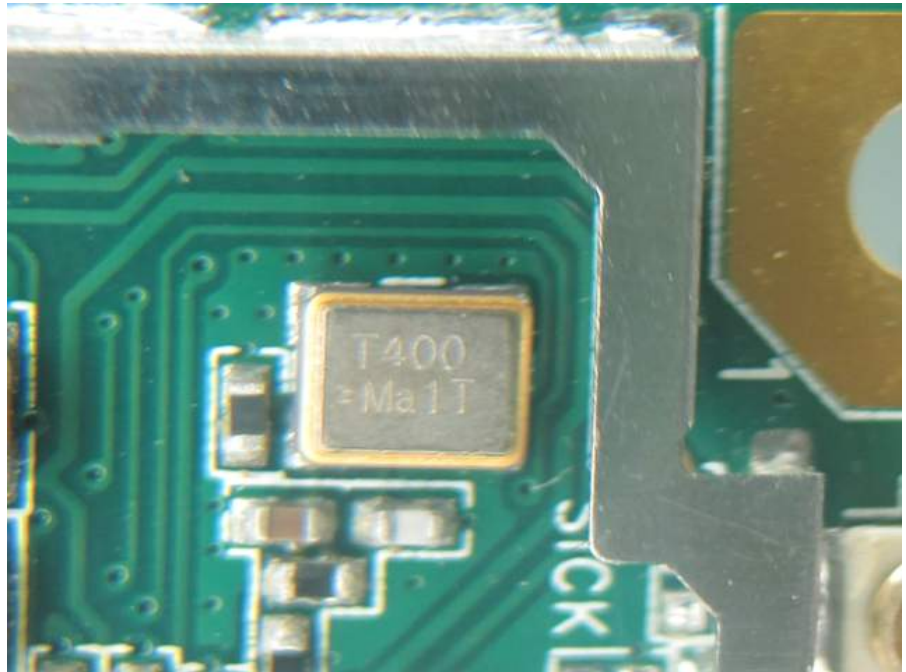
Config.1 Diversity – PCIE
(Second source)



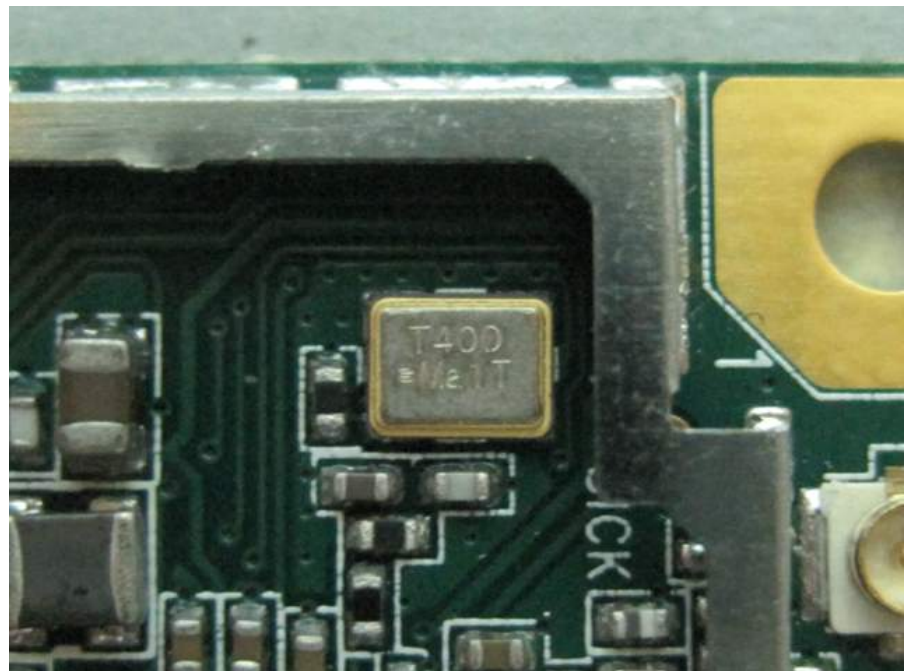
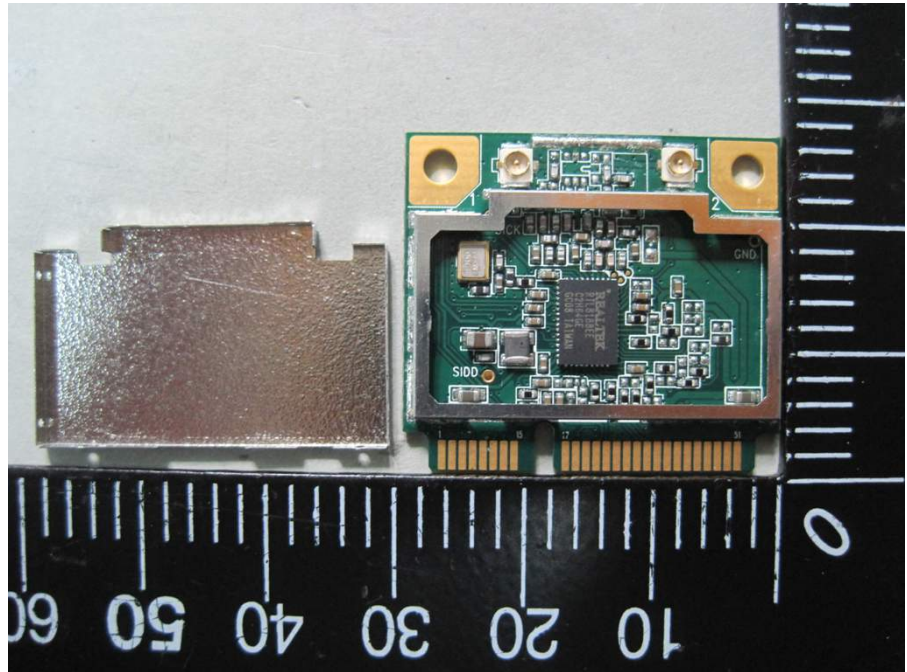


Config.1 Diversity – USB
(Second source)



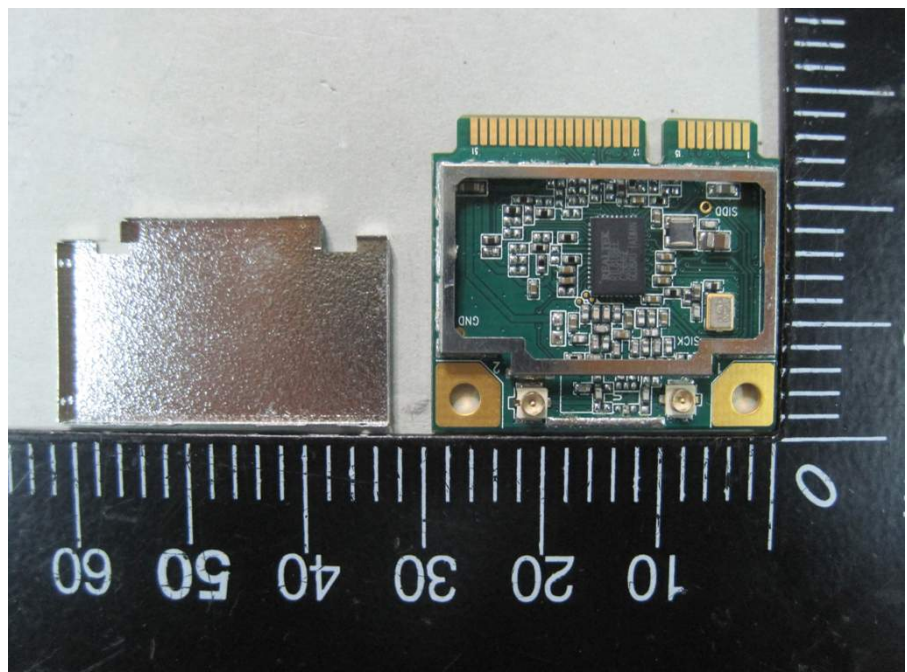


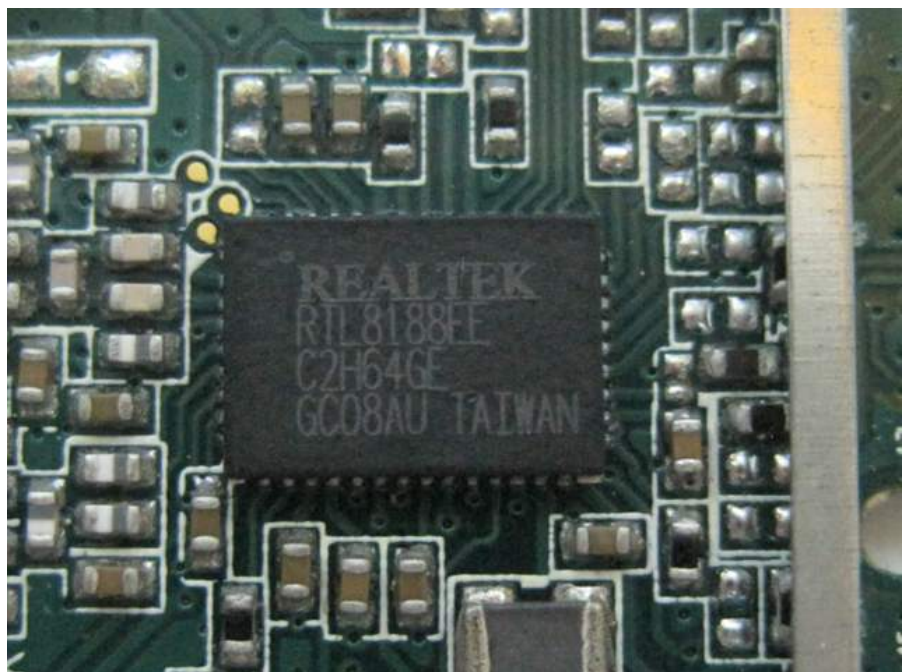
Config. 2 Fixed – PCIE
(Second source)



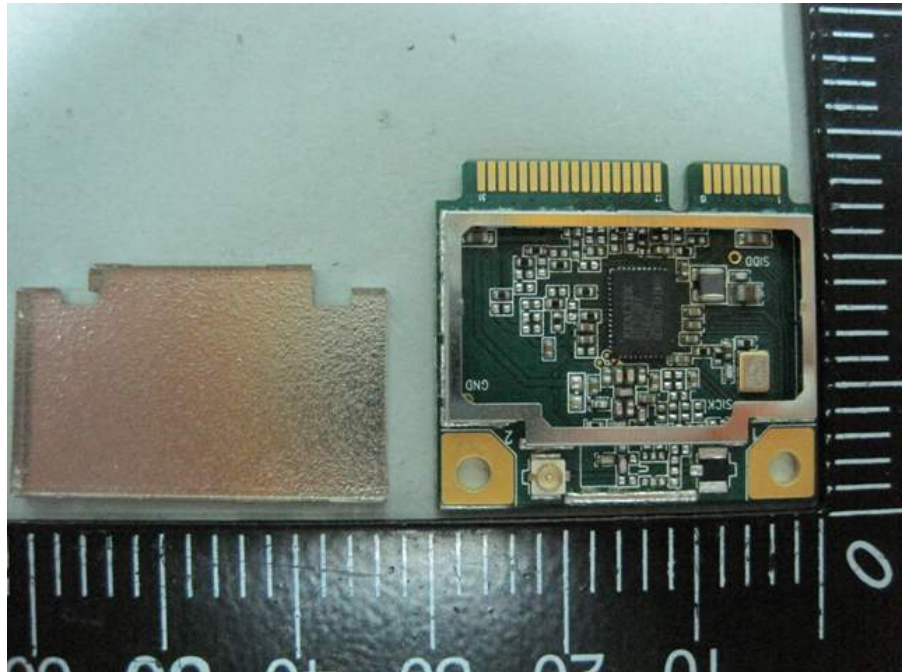


Config. 2 Fixed – USB
(Second source)



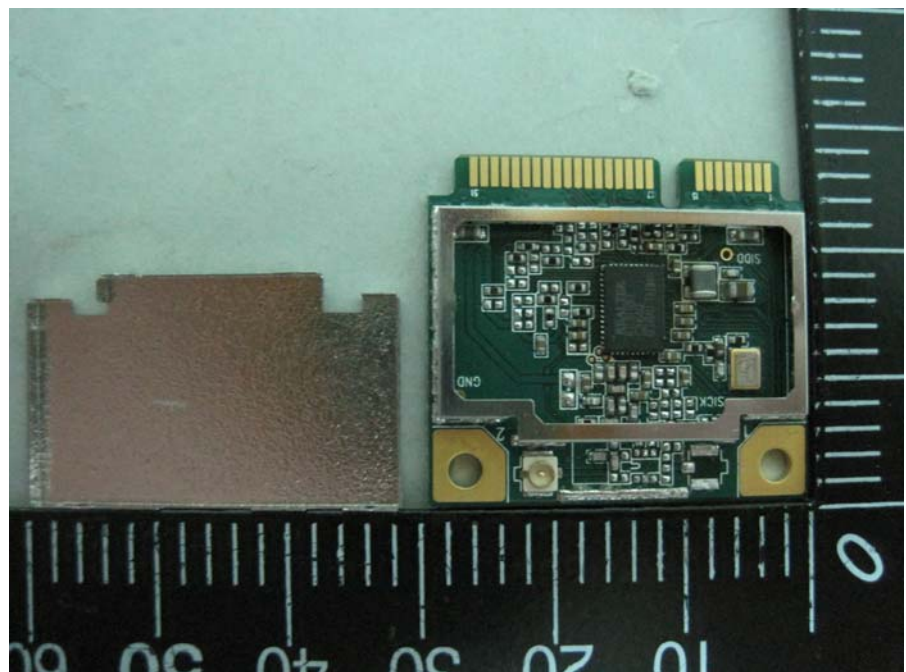


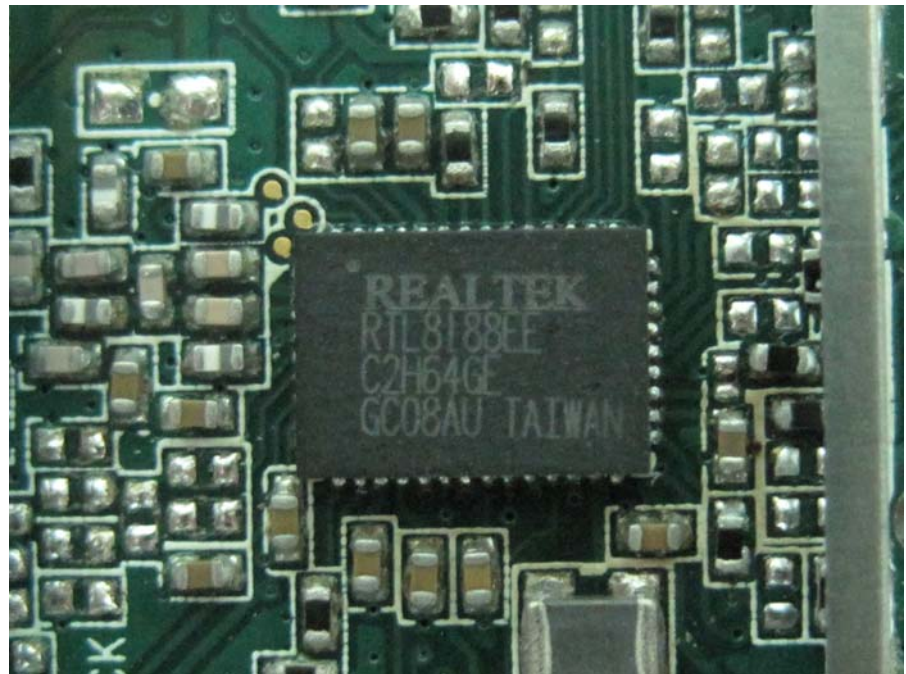
Config. 3 Single - PCIE
(Second source)





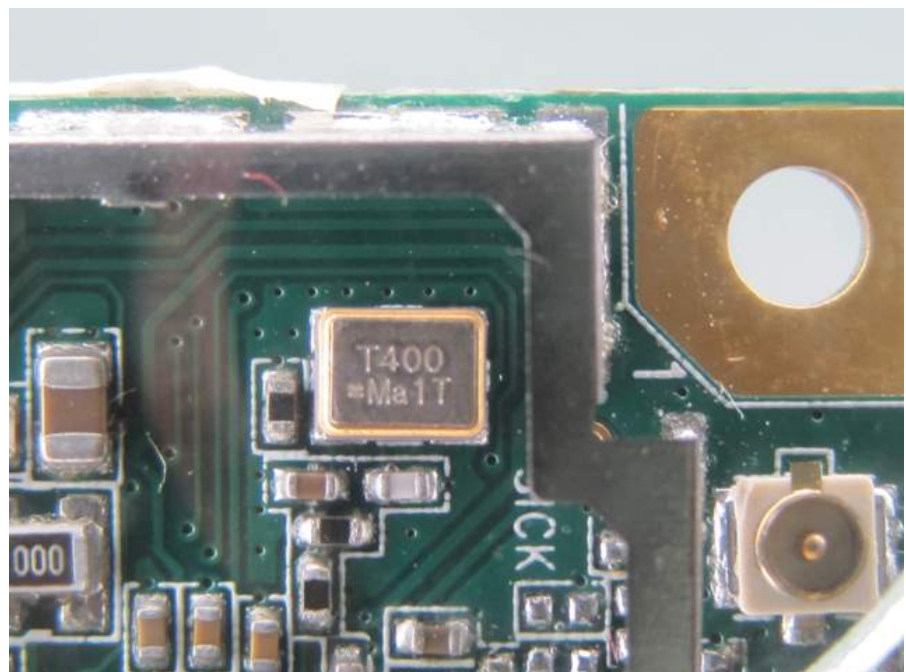
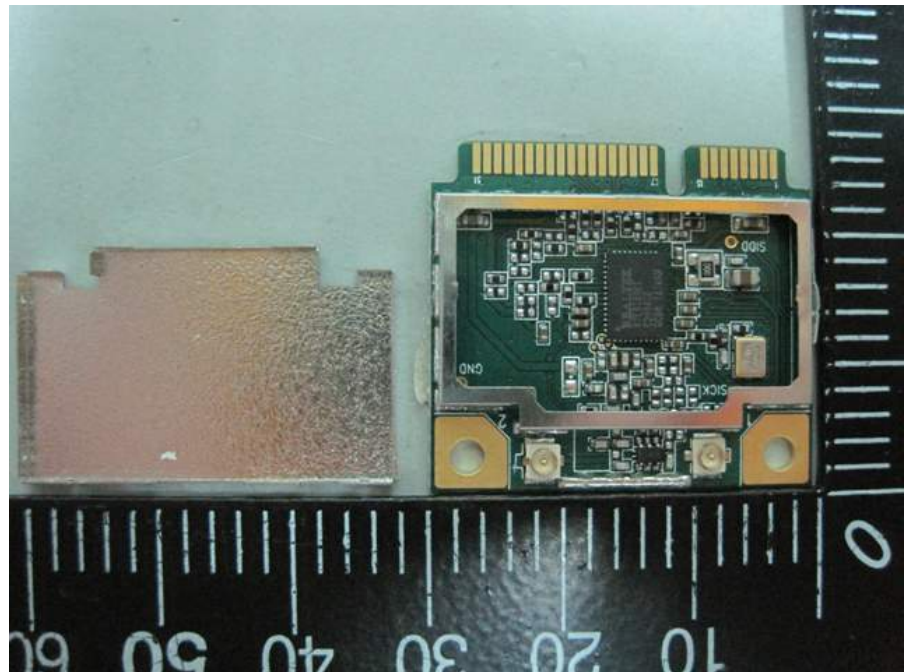
Config. 3 Single – USB
(Second source)





Mode: Main source Mode

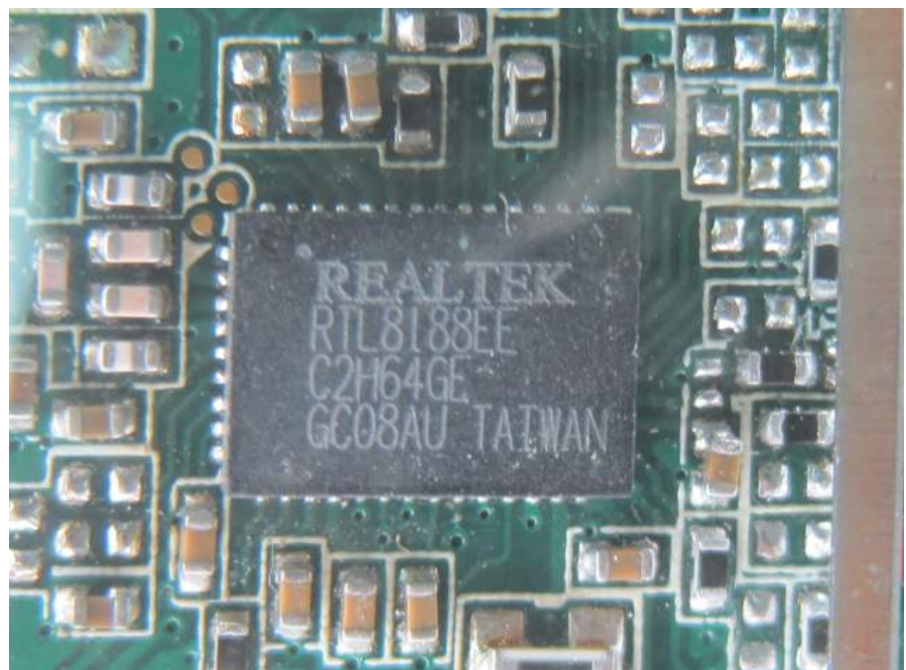
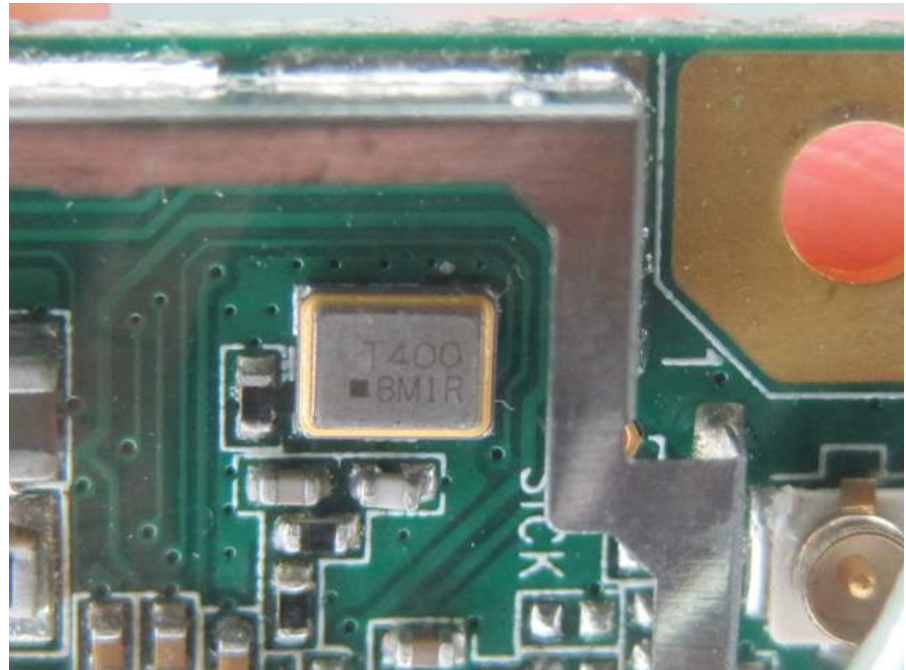
Config.1 Diversity – PCIE
(Main source)



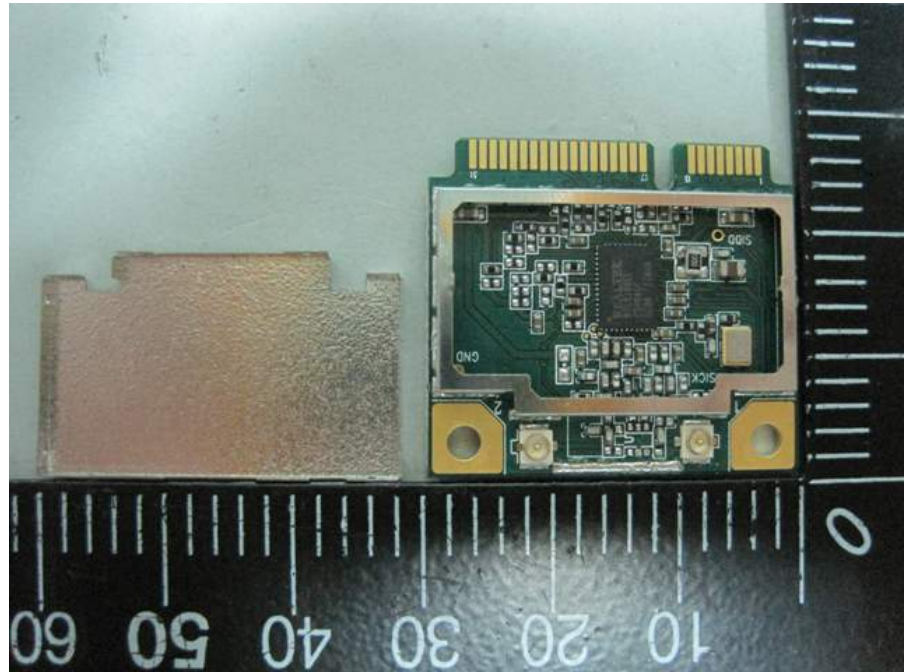


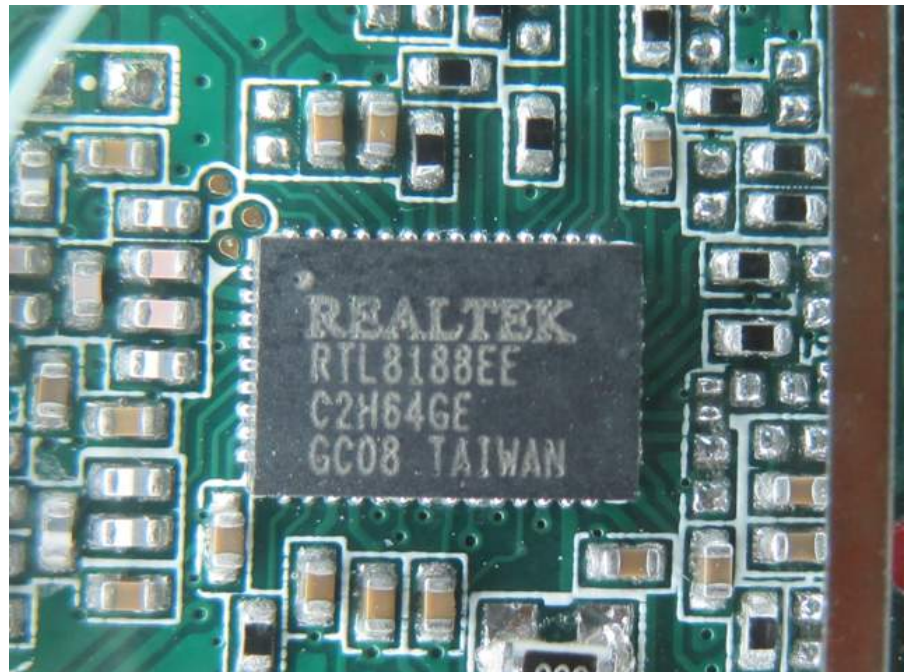
Config.1 Diversity – USB
(Main source)



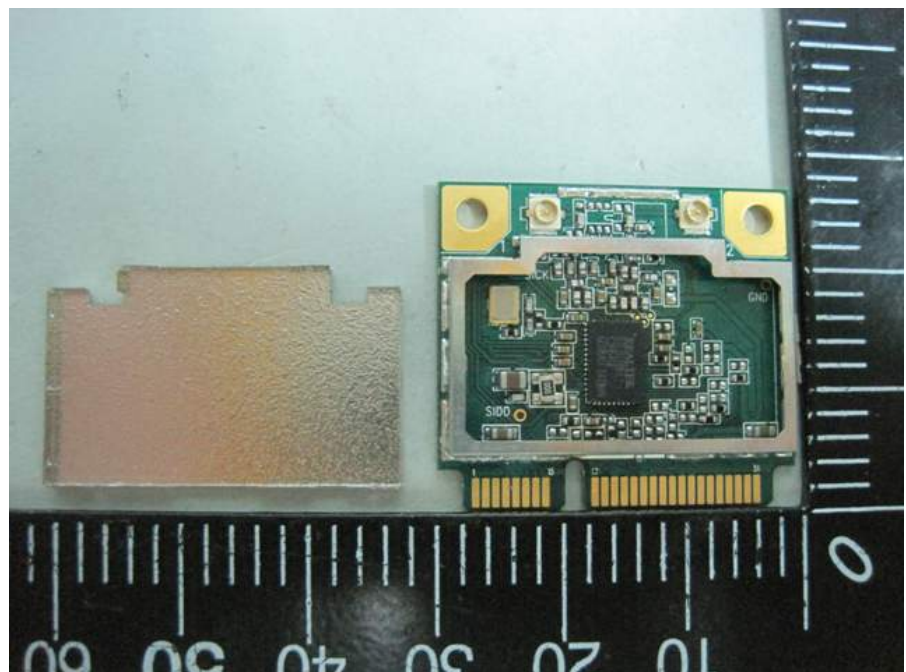


Config. 2 Fixed – PCIE (Main source)



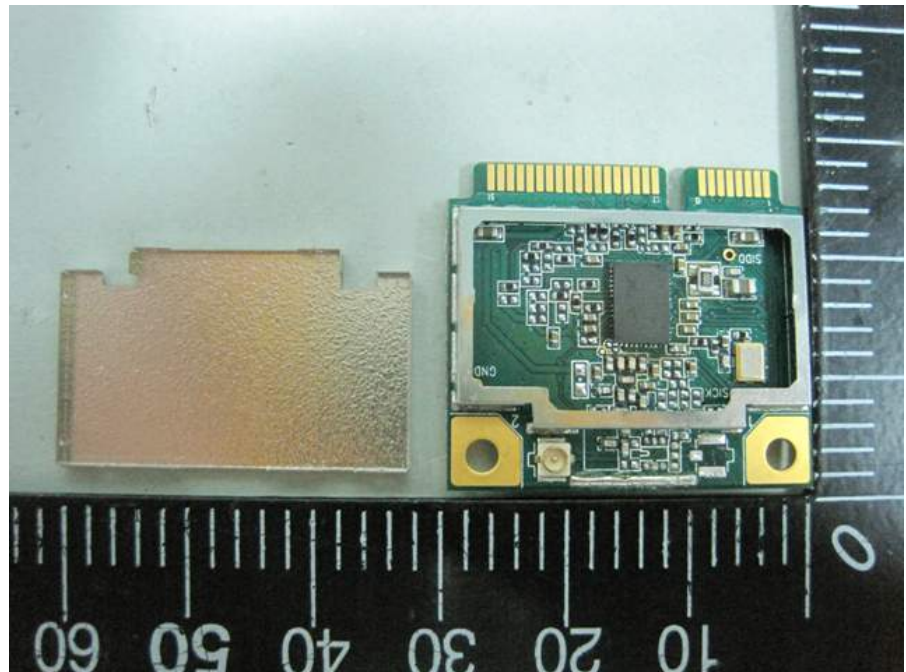


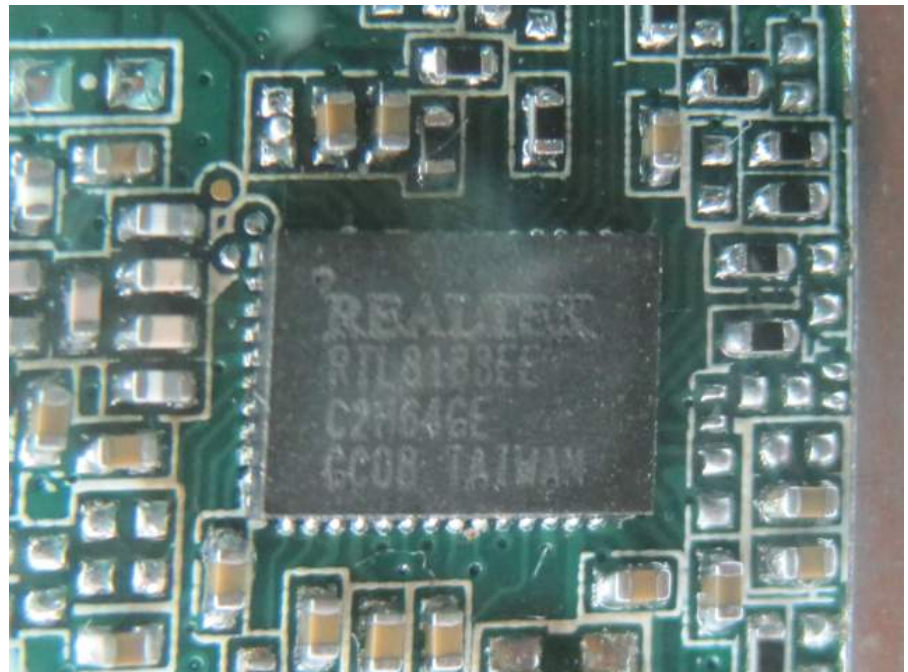
Config. 2 Fixed – USB
(Main source)





Config. 3 Single - PCIE
(Main source)





Config. 3 Single – USB (Main source)

