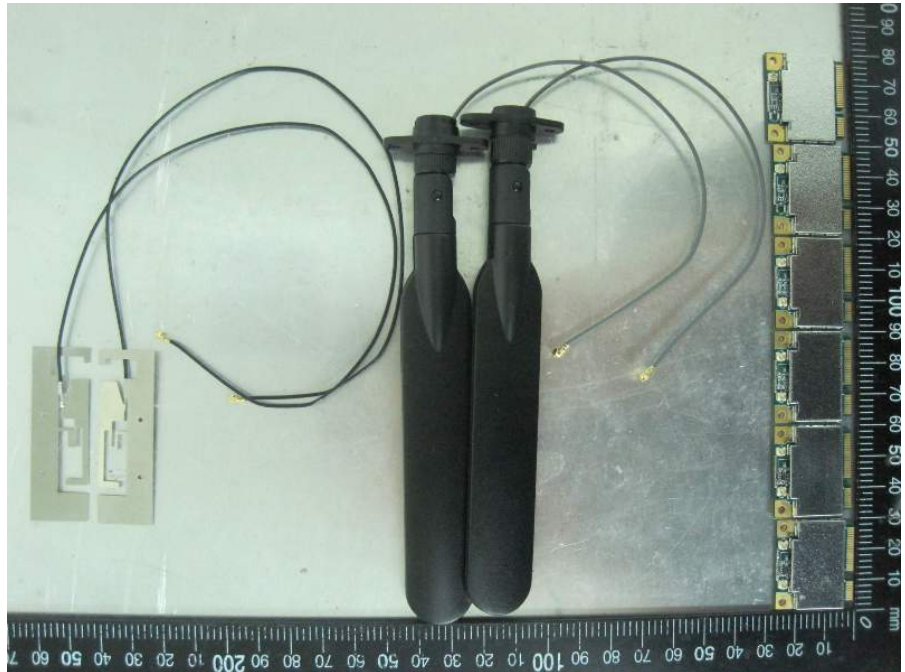


Photographs of EUT

Mode: Second source Mode



Config.1 Diversity – PCIE
(Second source)



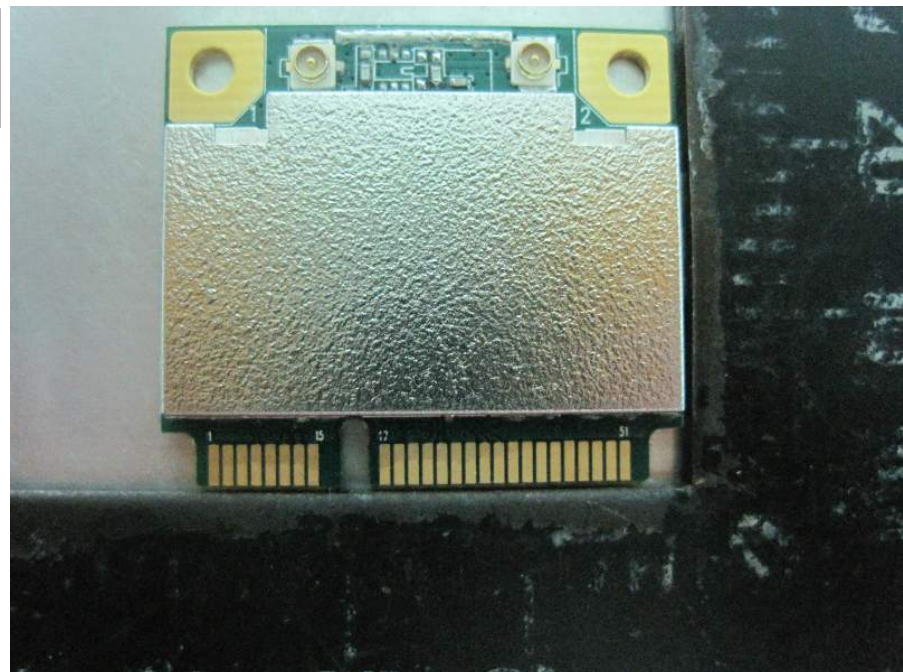


Config.1 Diversity – USB
(Second source)



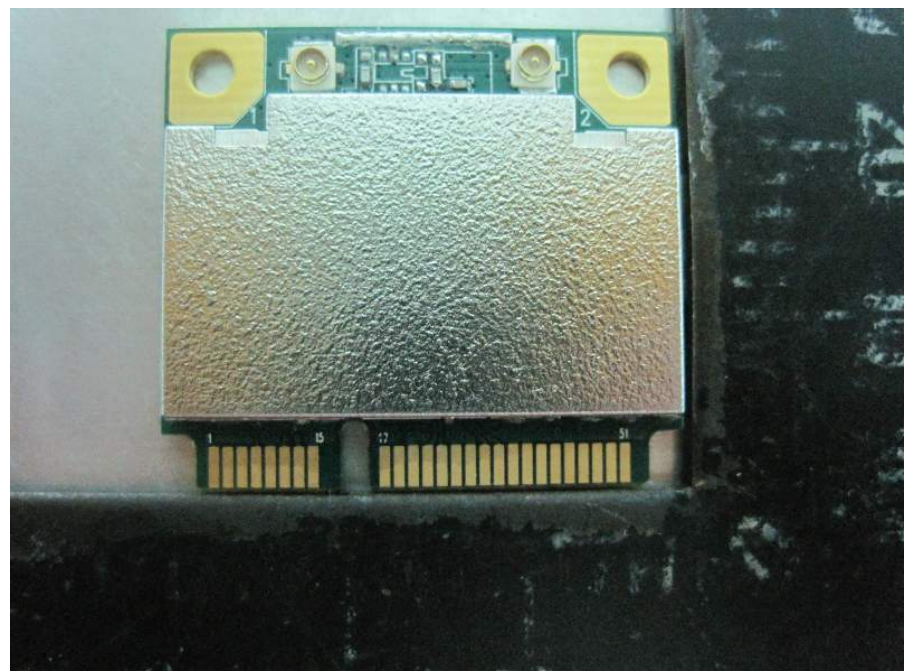


Config. 2 Fixed – PCIE
(Second source)





Config. 2 Fixed – USB
(Second source)





Config. 3 Single - PCIE
(Second source)





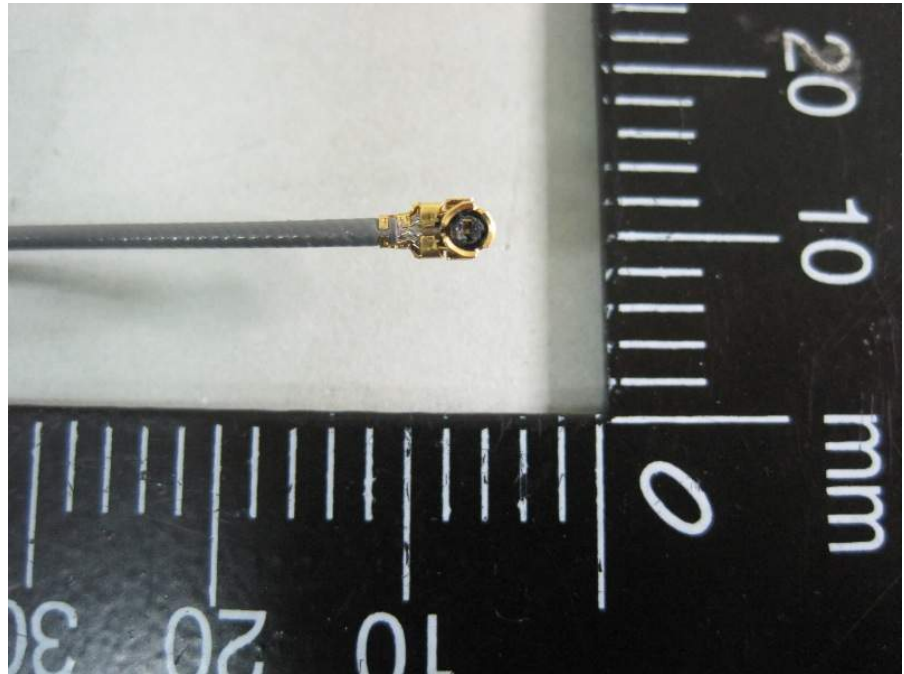
Config. 3 Single – USB
(Second source)



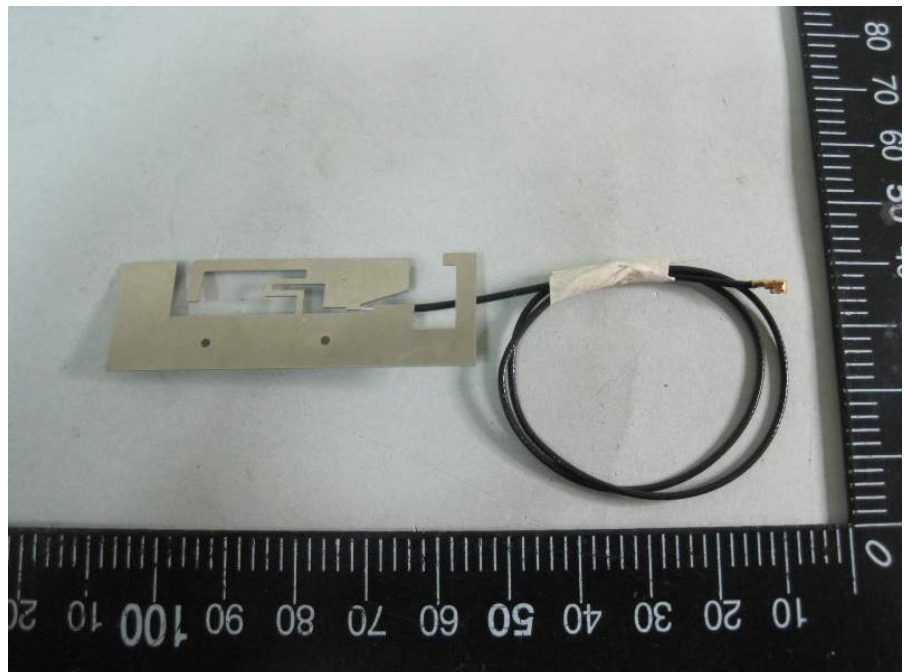


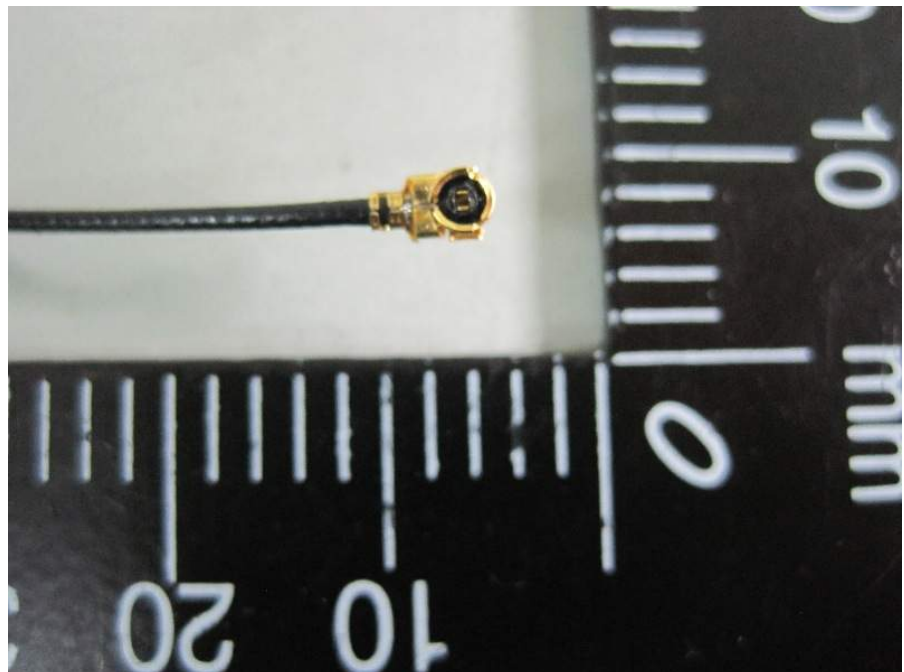
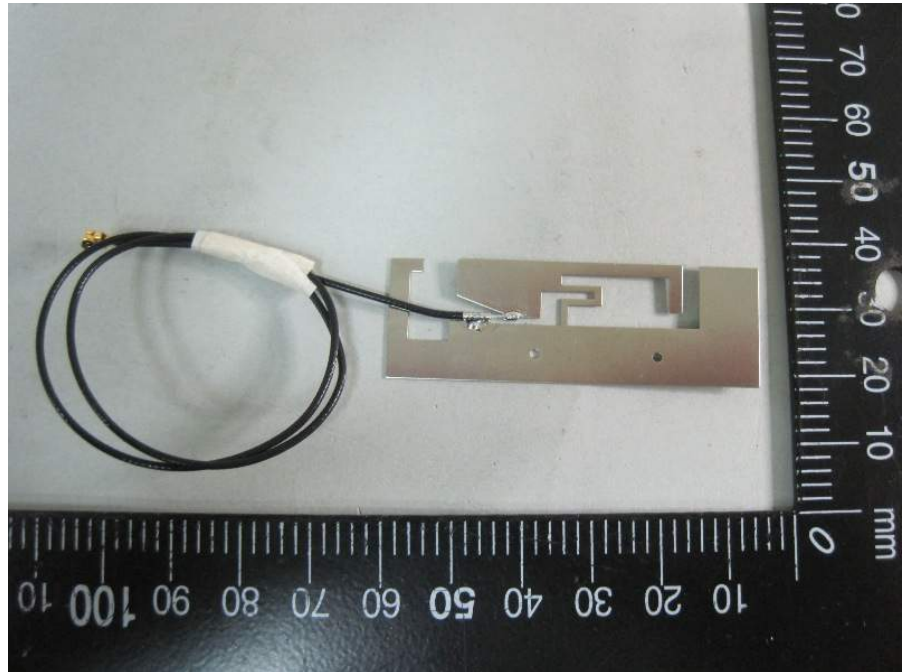
Dipole Antenna



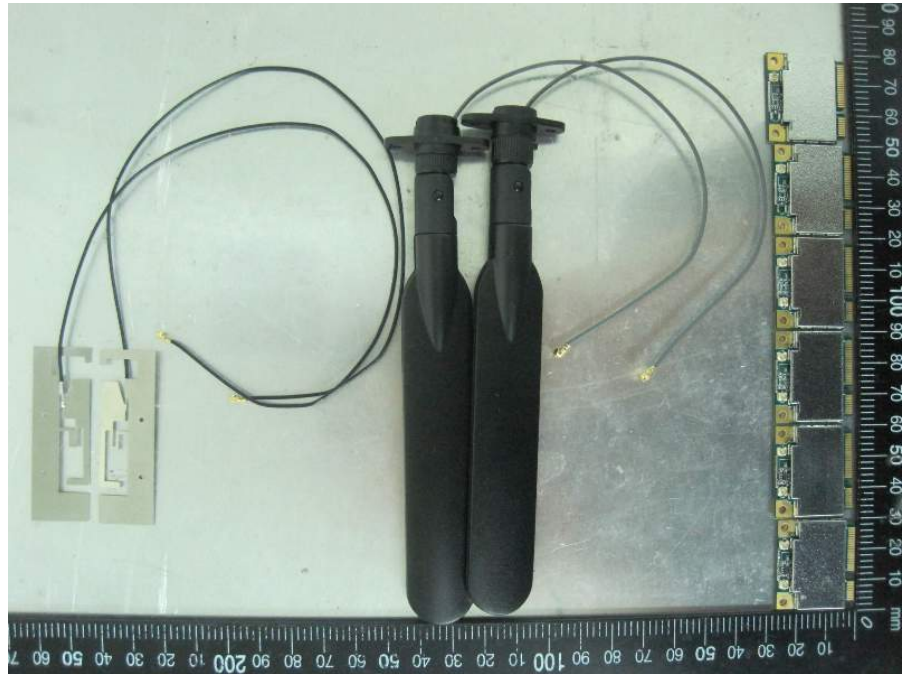


PIFA Antenna





Mode : Main source Mode



Config.1 Diversity – PCIe
(Main source)





Config.1 Diversity – USB
(Main source)





Config. 2 Fixed – PCIE
(Main source)





Config. 2 Fixed – USB
(Main source)





Config. 3 Single - PCIE
(Main source)





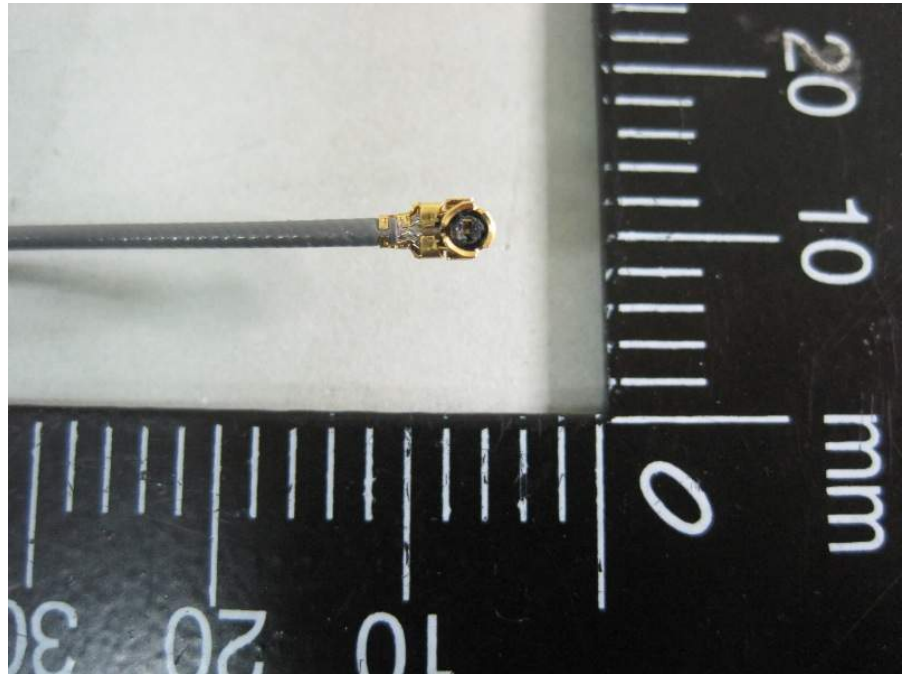
Config. 3 Single – USB
(Main source)





Dipole Antenna





PIFA Antenna

