

#01 WLAN2.4G_802.11b_Bottom_0cm_Ch11

DUT: 232119-02

Communication System: 802.11b ; Frequency: 2462 MHz;Duty Cycle: 1:1

Medium: MSL_2450_120629 Medium parameters used: $f = 2462$ MHz; $\sigma = 1.95$ mho/m; $\epsilon_r = 53.5$; $\rho = 1000$ kg/m³

Ambient Temperature : 22.5 °C ; Liquid Temperature : 21.5 °C

DASY5 Configuration:

- Probe: EX3DV4 - SN3661; ConvF(7.5, 7.5, 7.5); Calibrated: 2012/1/27
- Sensor-Surface: 4mm (Mechanical Surface Detection)
- Electronics: DAE3 Sn495; Calibrated: 2012/4/23
- Phantom: ELI 4.0; Type: QDOVA001BA; Serial: 1029
- Software: DASY5 Version; SEMCAD X Version 13.4 Build 45

Ch11/Area Scan (131x181x1): Measurement grid: dx=20mm, dy=20mm

Maximum value of SAR (interpolated) = 0.585 mW/g

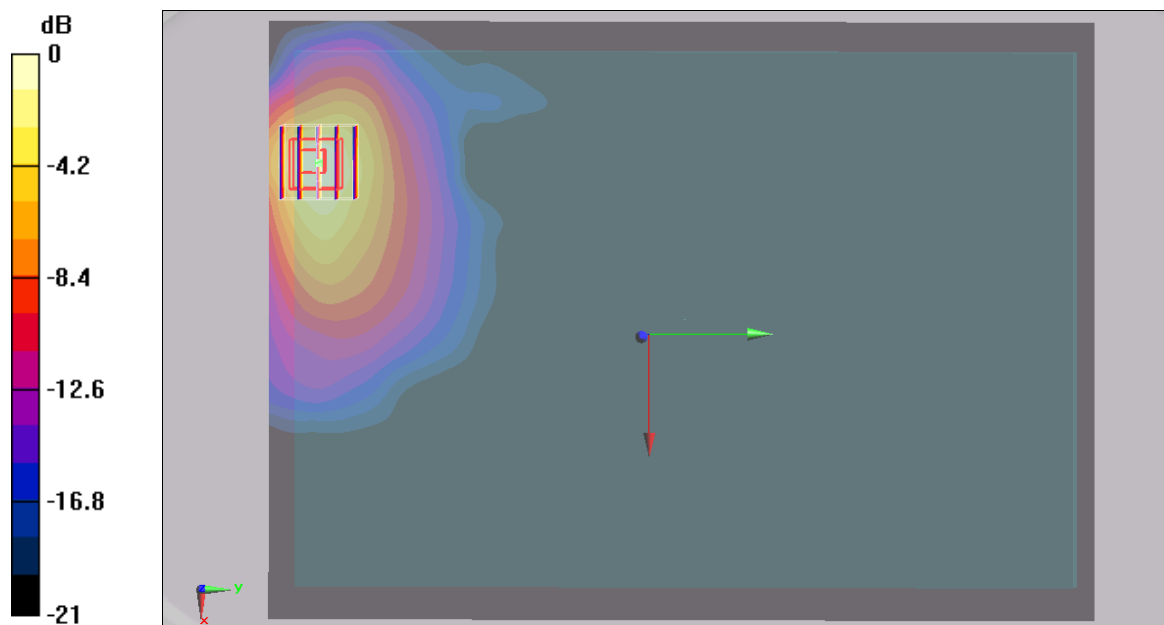
Ch11/Zoom Scan (5x5x7)/Cube 0: Measurement grid: dx=8mm, dy=8mm, dz=5mm

Reference Value = 0.439 V/m; Power Drift = 0.135 dB

Peak SAR (extrapolated) = 0.974 W/kg

SAR(1 g) = 0.498 mW/g; SAR(10 g) = 0.251 mW/g

Maximum value of SAR (measured) = 0.538 mW/g



0 dB = 0.538mW/g

#02 WLAN2.4G_802.11n_20M_Bottom_0cm_Ch6

DUT: 232119-02

Communication System: 802.11n; Frequency: 2437 MHz; Duty Cycle: 1:1

Medium: MSL_2450_120629 Medium parameters used: $f = 2437$ MHz; $\sigma = 1.91$ mho/m; $\epsilon_r = 53.6$; $\rho = 1000$ kg/m³

Ambient Temperature : 22.5 °C; Liquid Temperature : 21.5 °C

DASY5 Configuration:

- Probe: EX3DV4 - SN3661; ConvF(7.5, 7.5, 7.5); Calibrated: 2012/1/27
- Sensor-Surface: 4mm (Mechanical Surface Detection)
- Electronics: DAE3 Sn495; Calibrated: 2012/4/23
- Phantom: ELI 4.0; Type: QDOVA001BA; Serial: 1029
- Software: DASY5 Version; SEMCAD X Version 13.4 Build 45

Ch6/Area Scan (131x61x1): Measurement grid: dx=20mm, dy=20mm

Maximum value of SAR (interpolated) = 0.670 mW/g

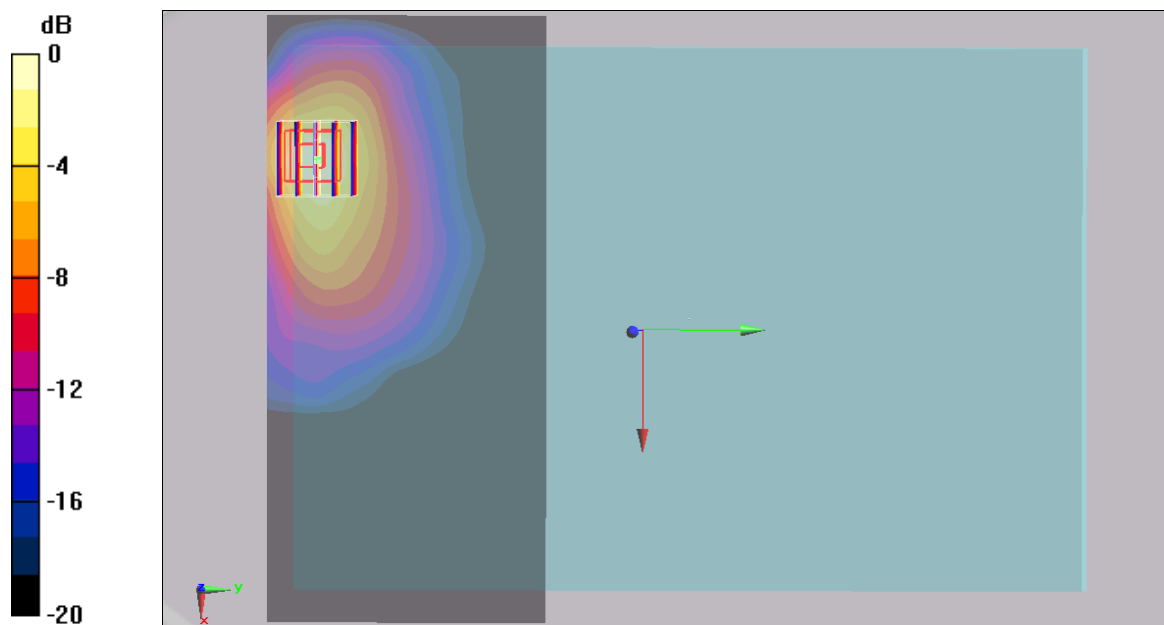
Ch6/Zoom Scan (5x5x7)/Cube 0: Measurement grid: dx=8mm, dy=8mm, dz=5mm

Reference Value = 1.11 V/m; Power Drift = -0.181 dB

Peak SAR (extrapolated) = 1.11 W/kg

SAR(1 g) = 0.570 mW/g; SAR(10 g) = 0.287 mW/g

Maximum value of SAR (measured) = 0.610 mW/g



0 dB = 0.610mW/g

#02 WLAN2.4G_802.11n_20M_Bottom_0cm_Ch6_2D

DUT: 232119-02

Communication System: 802.11n; Frequency: 2437 MHz; Duty Cycle: 1:1

Medium: MSL_2450_120629 Medium parameters used: $f = 2437$ MHz; $\sigma = 1.91$ mho/m; $\epsilon_r = 53.6$; $\rho = 1000$ kg/m³

Ambient Temperature : 22.5 °C; Liquid Temperature : 21.5 °C

DASY5 Configuration:

- Probe: EX3DV4 - SN3661; ConvF(7.5, 7.5, 7.5); Calibrated: 2012/1/27
- Sensor-Surface: 4mm (Mechanical Surface Detection)
- Electronics: DAE3 Sn495; Calibrated: 2012/4/23
- Phantom: ELI 4.0; Type: QDOVA001BA; Serial: 1029
- Software: DASY5 Version; SEMCAD X Version 13.4 Build 45

Ch6/Area Scan (131x61x1): Measurement grid: dx=20mm, dy=20mm

Maximum value of SAR (interpolated) = 0.670 mW/g

Ch6/Zoom Scan (5x5x7)/Cube 0: Measurement grid: dx=8mm, dy=8mm, dz=5mm

Reference Value = 1.11 V/m; Power Drift = -0.181 dB

Peak SAR (extrapolated) = 1.11 W/kg

SAR(1 g) = 0.570 mW/g; SAR(10 g) = 0.287 mW/g

Maximum value of SAR (measured) = 0.610 mW/g

1g/10g Averaged SAR

