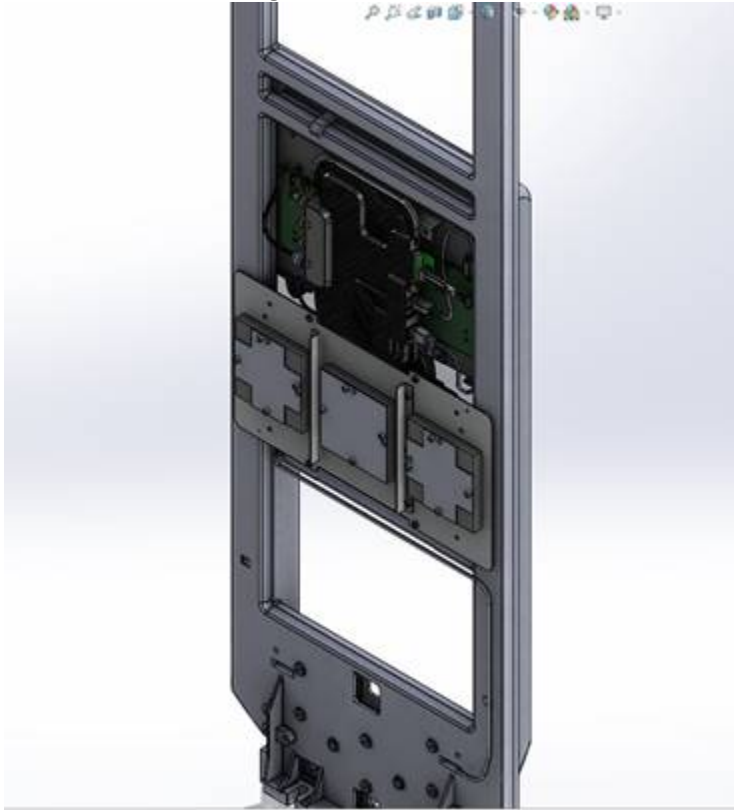


Antenna Installation Information

Equipment is installed professionally (see cover letters) into fixed/mobile structures such as those described below. RF Exposure separation distances are addressed as part of the instructions to the professional installer.

1. Pedestal configuration: Reader or antenna elements facing x- or y-axis



2. Overhead configuration: Reader or antenna elements facing the z-axis (ceiling or floor)