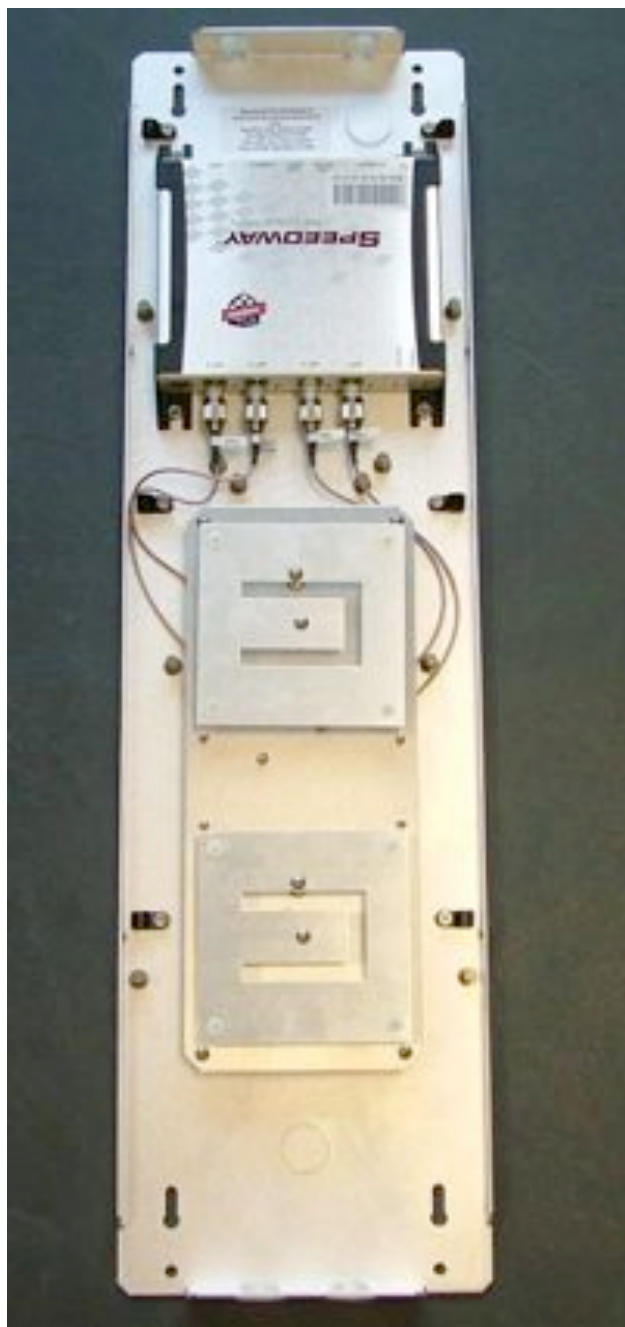


Internal Photographs – RFID Integrated Reader, IPJR640



Internal photograph – radome removed



Close up of RFID reader (transmitter/receiver)



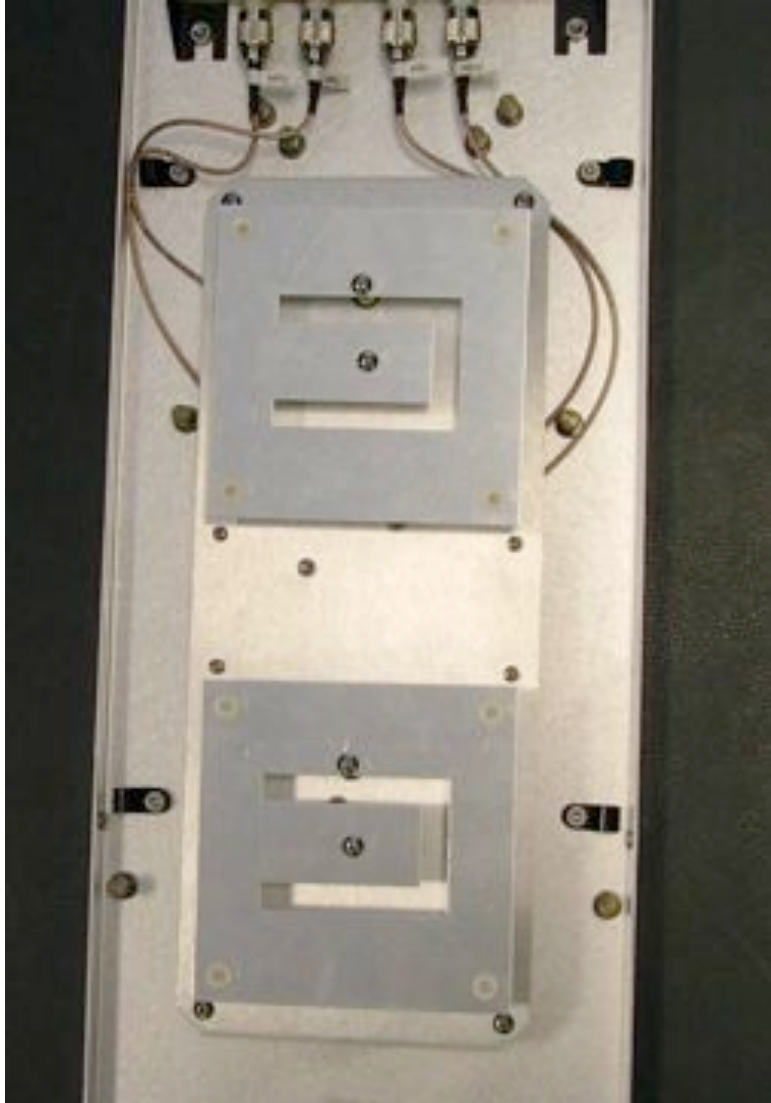
Close up of label that indicates the transmitter can only be replaced with a specific SKU



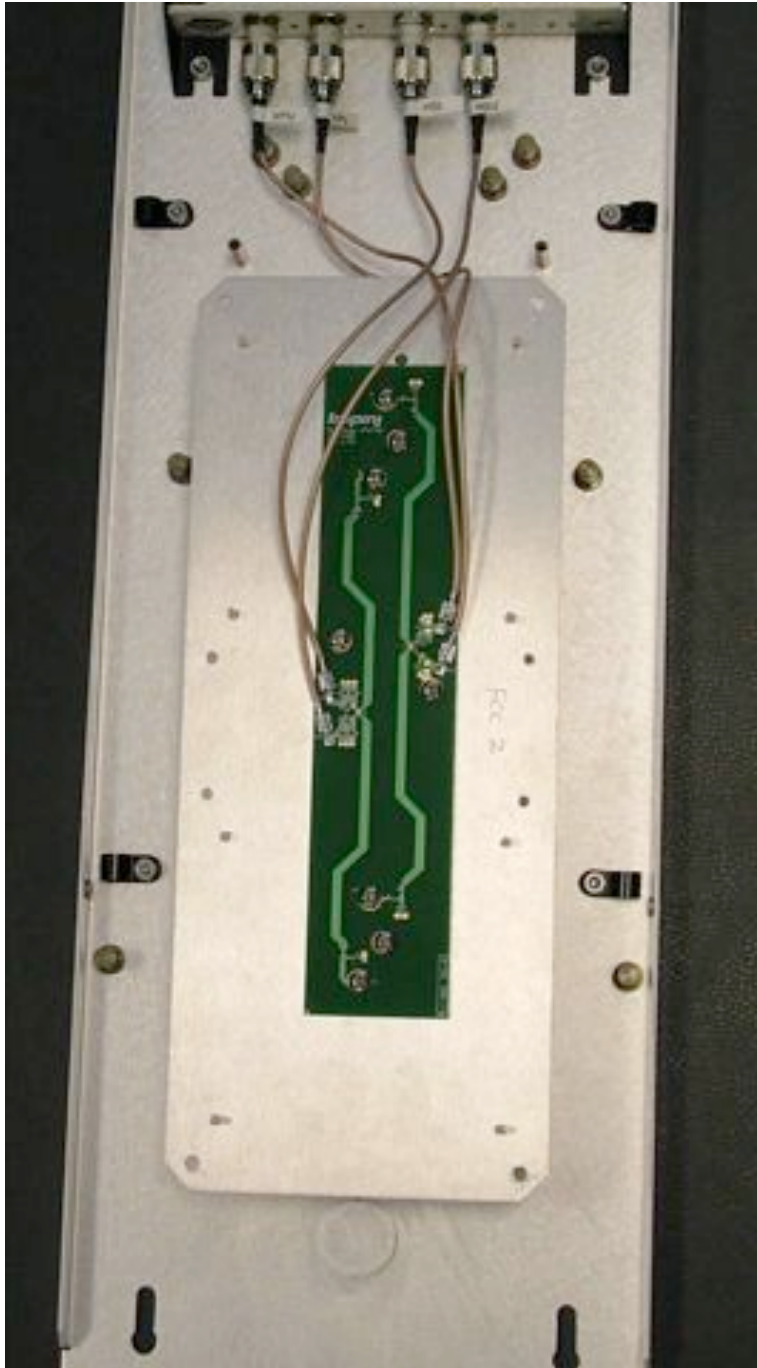
Side view of reader element



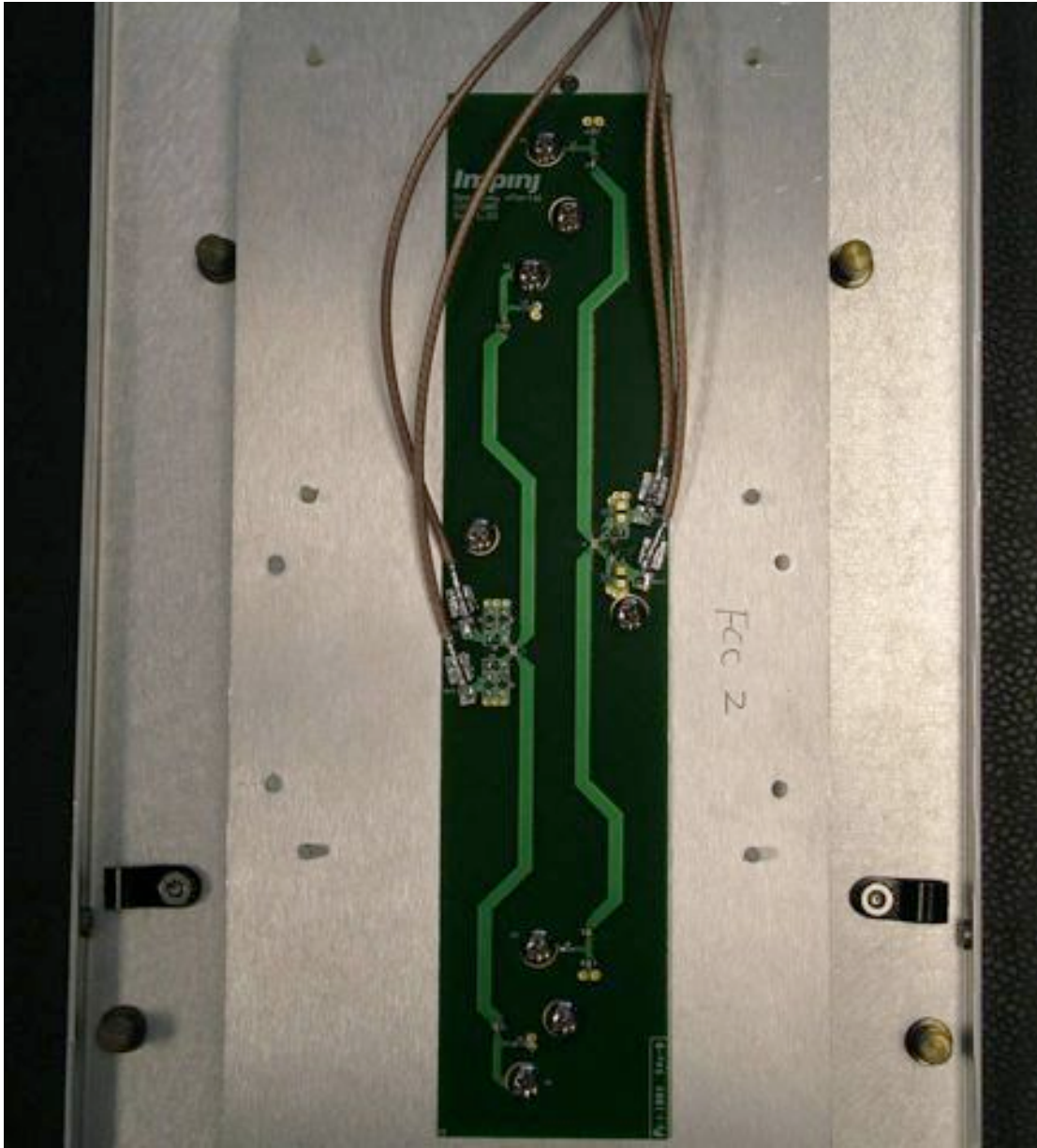
Opposite Side view of reader element



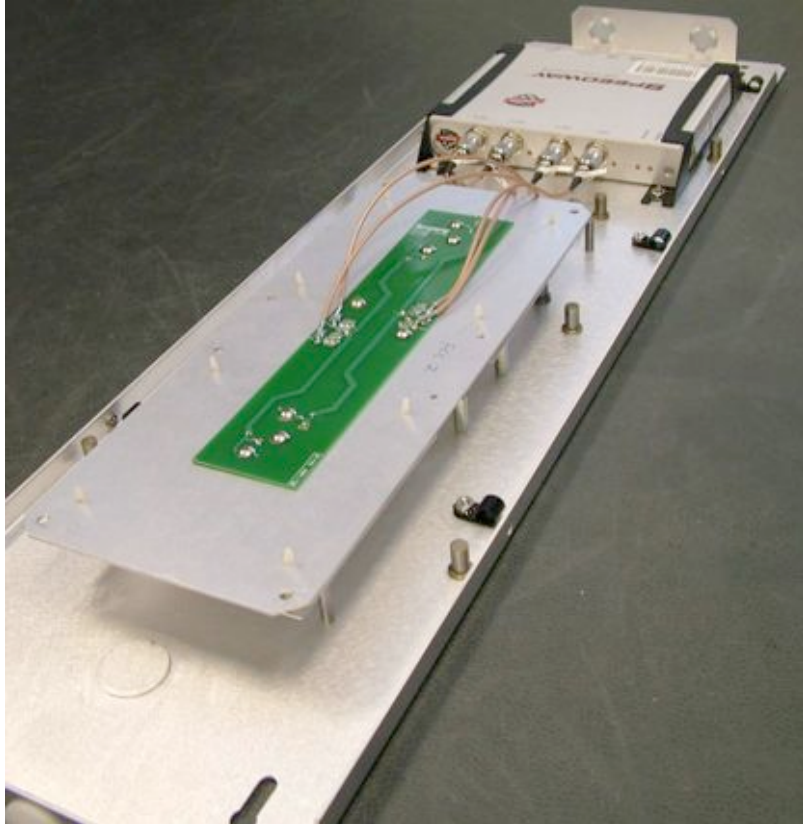
Close up of antenna module



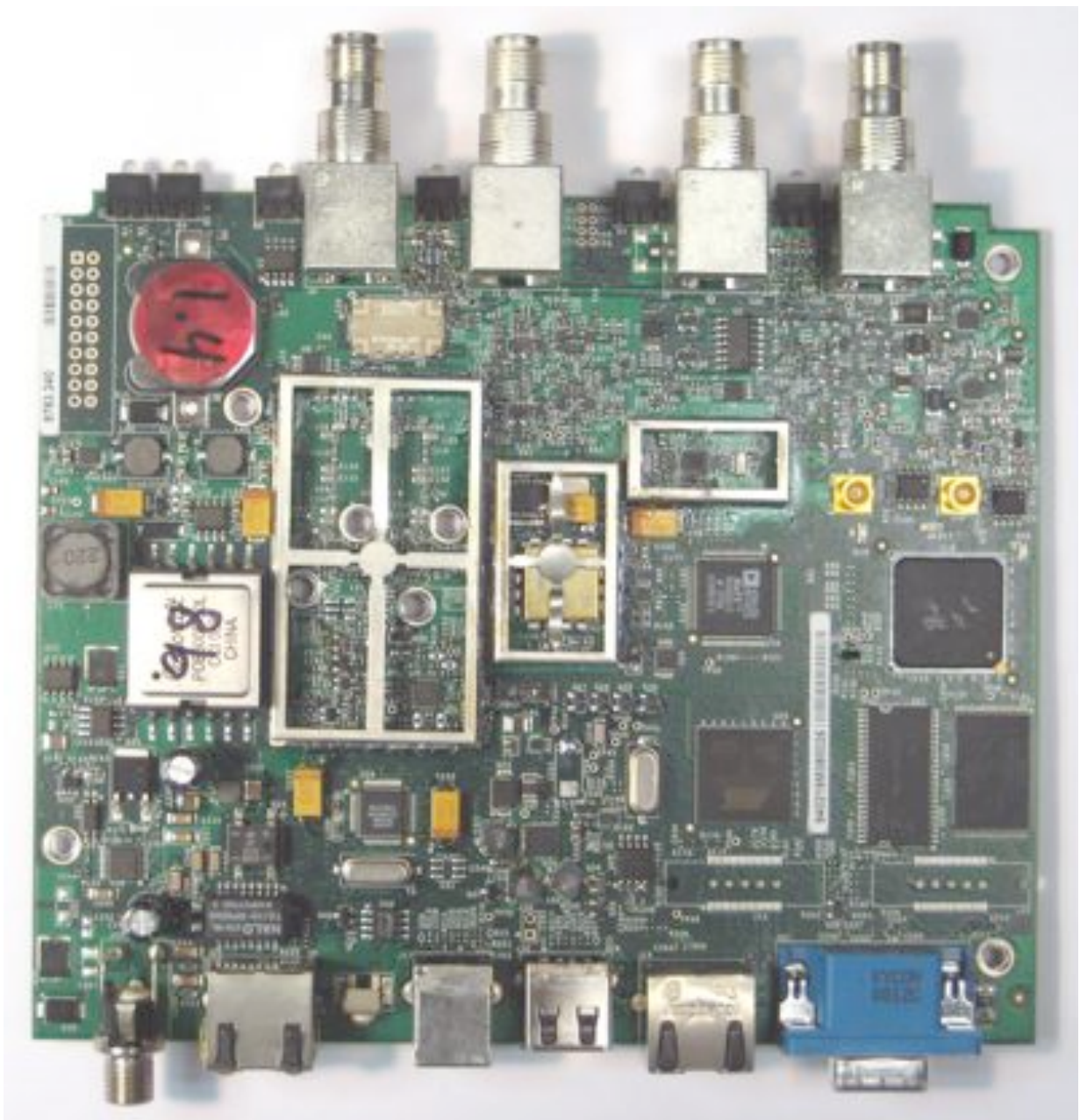
Close up of antenna module PCB.
(Antenna module is unscrewed and flipped over for this photograph)



Close up of antenna module PCB.
(Antenna module is unscrewed and flipped over for this photograph)



Isometric view of antenna module PCB.
(Antenna module is unscrewed and flipped over for this photograph)



Reader Element PCB - Top



Reader Element PCB - Bottom