



Address: Pronto Networks, 4637 Chabot Drive, #350, Pleasanton, CA 94588  
(925) 227 5500 (main): (925) 460-8223 (fax)

## **Statement of Compliance Letter**

**FCC ID : TVV-PN-CPP-A-1422**

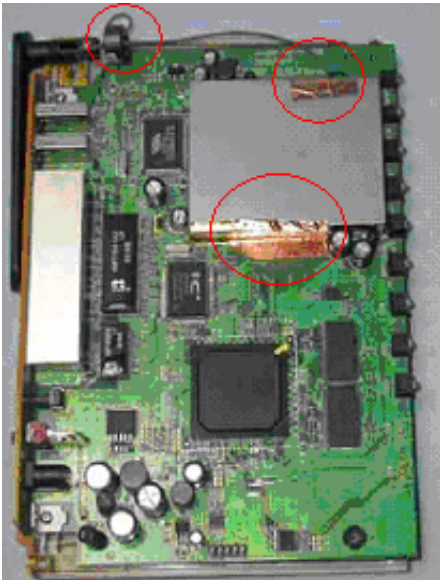
**Product : 802.11b/g Wireless Router**

**Model : PN-CPP-A-1422u**

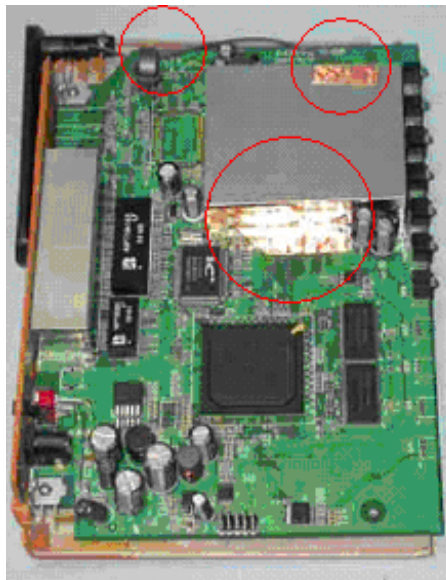
To whom it may concern:

We, the undersigned, hereby certify that we responsible to comply with the relevant provisions of the following :

**Model : PN-CPP-A-1422u**



**Model : PN-CPP-A-1422**



**(1) Radiated Emission Suggestion:**

- a. Add the EMI PARTITION to cover the Mini-PCI connector.
- b. Add the copper foil, 1<sup>st</sup> : (25mm\*25mm\*0.04mm thickness) and 2<sup>nd</sup> : (25mm\*50mm\*0.04mm thickness) to cover the Mini PCI connector.
- c. Add the CORE, (big diameter 14mm\*width 7mm\*small diameter 8mm) let the Antenna cable to band the core one circle.

**(2) We confirming the above modifications made will be sold in the further production and in each unit under this FCC ID.**

This authorization is valid until further written notice from:

Pronto Networks

Sincerely,

NANDU DESAI  
AVP Product Management  
Pronto Networks

Date: 01/18/2006