

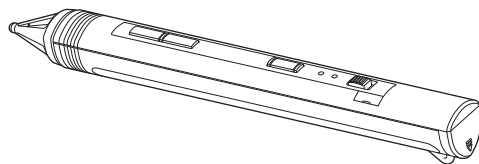


INTERACTIVE PEN

MODEL

PC-380P1

User Manual



Contents

Safety precautions	2
Using precautions	2
Introduction	5
What's included in the box.....	5
Overview.....	5
Preparations	6
Operation.....	8
Troubleshooting.....	10
Specifications	10

Supported projectors*:
XD365U-EST, WD385U-EST

* Supported projectors are subject to change without notice.

This User Manual is important to you.
Please read it before using your interactive pen.

Safety precautions

Warning:

Do not use the interactive pen if it is damaged by falling from on high or stepping upon it. The damaged part causes injury.

When you use the interactive pen, be sure to put the strap on your wrist. Do not wave the interactive pen with the strap put on your wrist.

If the strap is not used properly, the interactive pen may slip from your hand and hit other people, resulting in injury. Even when the strap is put on your wrist, if you wave the interactive pen, the strap may be cut and the interactive pen may hit other people, resulting in injury.

Caution:

- Do not touch the interactive pen with wet hands. In addition, do not use the interactive pen with condensation on it. The intrusion of water may cause damage or other failures.
- Use of a battery of wrong type may cause explosion.
- Only Carbon-Zinc or Alkaline-Manganese Dioxide type batteries should be used.
- Dispose of used batteries according to your local regulations.
- Batteries may explode if misused. Do not recharge, disassemble, or dispose of in fire.
- Be sure to handle the battery according to the instructions.
- Load the battery with its positive (+) and negative (-) sides correctly oriented as indicated on the remote control.
- Keep batteries out of reach of children and pets.
- Remove the battery, if the remote control is not used for a long time.
- Do not combine a new battery with an old one.
- If the solution of batteries comes in contact with your skin or clothes, rinse with water. If the solution comes in contact with your eyes, rinse them with water and then consult your doctor.

Using precautions

Using this interactive pen may cause damage to the screen surface depending on the screen used. In such a case, replace the screen with that having a solid surface.

When using the projector in Europe:

COMPLIANCE NOTICE

This projector complies with the requirements of the EC Directive 1999/5/EC "R&TTE Directive".

For Canada only:

COMPLIANCE NOTICE OF INDUSTRY CANADA

Under Industry Canada regulations, this radio transmitter may only operate using an antenna of a type and maximum (or lesser) gain approved for the transmitter by Industry Canada. To reduce potential radio interference to other users, the antenna type and its gain should be so chosen that the equivalent isotropically radiated power (e.i.r.p.) is not more than that necessary for successful communication.

This device complies with Industry Canada licence-exempt RSS standard(s). Operation is subject to the following two conditions:

- (1) this device may not cause interference, and
- (2) this device must accept any interference, including interference that may cause undesired operation of the device.

For the U.S. and Canada only:

The wireless function of this projector can be used only in the United States and Canada. This function cannot be used legally in countries other than the above.

For Europe only:

The wireless function of this projector can be used only in Austria, Bulgaria, Czech Republic, Denmark, Finland, France, Germany, Greece, Hungary, Italy, Norway, Poland, Portugal, Romania, Slovakia, Spain, Sweden, Switzerland, Ireland, United Kingdom, Belgium, Netherlands, Luxembourg, Slovenia, Cyprus, Estonia, Iceland, Latvia, Lithuania, and Malta. This function cannot be used legally in countries other than the above.



AT	BG	CZ	DK	FI	FR	DE	GR	HU	IT	NO	PL	PT	RO	SK
ES	SE	CH	IE	GB	BE	NL	LU	SI	CY	EE	IS	LV	LT	MT

Hereby, Mitsubishi, declares that this projector is in compliance with the essential requirements and other relevant provisions of Directive 1999/5/EC.

Consult our European sales companies if you wish to confirm the Declaration of Conformity on this projector. (Refer to the page "Mitsubishi Projector Warranty, Sales Support and Service Information" for contact information.)

For Italy only:

In Italy, if used outside of own premises, general authorization is required.

For France only:

In France, the equipment must be restricted to the 2.4465-2.4835 GHz frequency range and must be restricted to do indoor use.

For Norway only:

In Norway, frequency band 2400-2483.5 MHz does not apply for the geographical area within a radius of 20 km from the centre of Ny-Alesund.

Using precautions (continued)

For Europe only:

The equipment was passed. The test was performed according to the following European standards:

- EN 300 328 V1.7.1: 2006
- EN 301 489-1 V1.8.1: 2008
- EN 301 489-17 V2.1.1: 2009
- EN 62311: 2008
- EN 60950-1: 2006+A1: 2010

Regulatory statement (R&TTE)

European standards dictate maximum radiated transmit power of 100mW EIRP and frequency range 2.400-2.4835 GHz.

Operation of this device is subjected to the following National regulations and may be prohibited to use if certain restriction should be applied.

You are cautioned that changes or modifications not expressly approved by the party responsible for compliance could void your authority to operate the equipment.



Note: This symbol mark is for EU countries only.

This symbol mark is according to the directive 2002/96/EC Article 10 Information for users and Annex IV, and/or to the directive 2006/66/EC Article 20 Information for end-users and Annex II.

Your MITSUBISHI ELECTRIC product is designed and manufactured with high quality materials and components which can be recycled and/or reused.

This symbol means that electrical and electronic equipment, batteries and accumulators, at their end-of-life, should be disposed of separately from your household waste.

If a chemical symbol is printed beneath the symbol shown above, this chemical symbol means that the battery or accumulator contains a heavy metal at a certain concentration. This will be indicated as follows:

Hg: mercury (0,0005%), Cd: cadmium (0,002%), Pb: lead (0,004%)

In the European Union there are separate collection systems for used electrical and electronic products, batteries and accumulators.

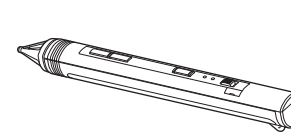
Please, dispose of this equipment, batteries and accumulators correctly at your local community waste collection/recycling centre.

Please, help us to conserve the environment we live in!

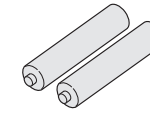
Introduction

Using this interactive pen, you can perform the operation of the computer such as drawing a line or clicking a button while projecting the image supplied from the computer.

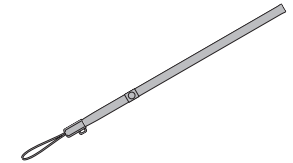
What's included in the box



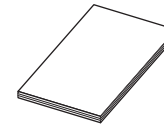
Interactive pen



R03 (size-AAA) battery (2)



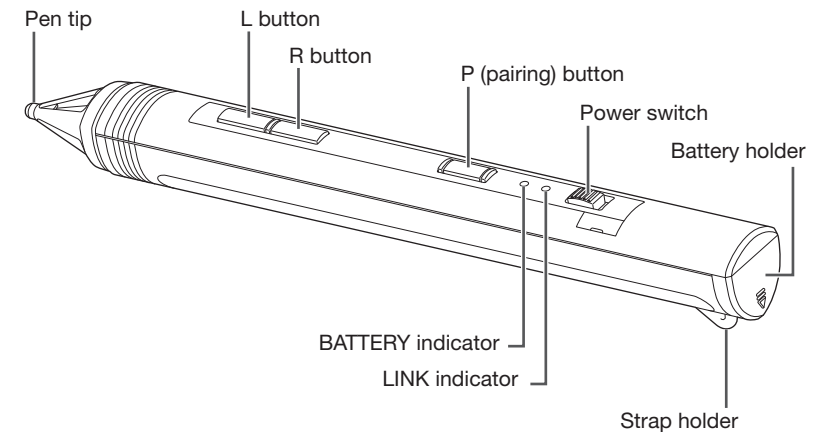
Strap



User Manual

CD-ROM

Overview



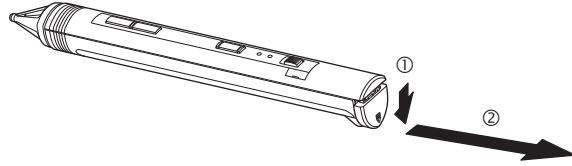
Preparations

Installing the batteries to the interactive pen

Preparation:

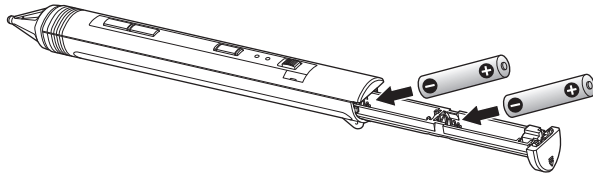
Check that the power switch is turned OFF.

1. Push down the cover of the battery holder (①), and then pull out the battery holder (②).

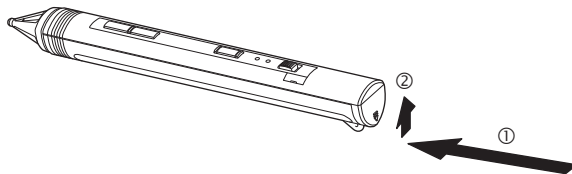


2. Load the batteries making sure that they are positioned correctly (+ to +, and - to -).

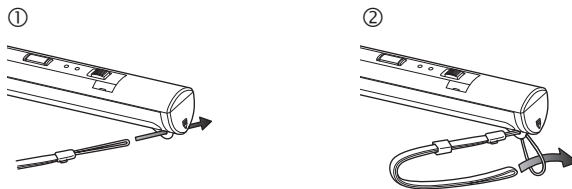
- Use two R03 (size-AAA) batteries.
- Load the batteries from - spring side, and make sure to set them tightly.



3. Close the cover.



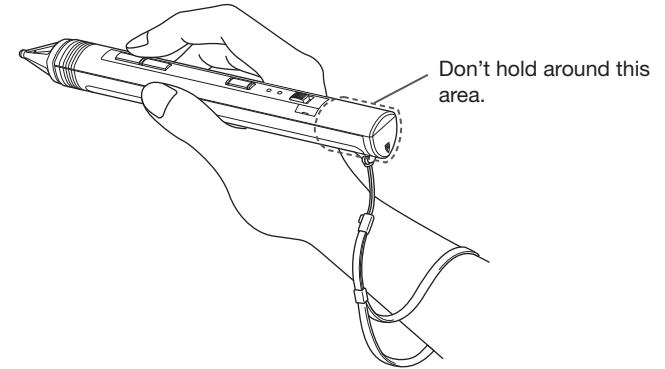
Attaching the strap



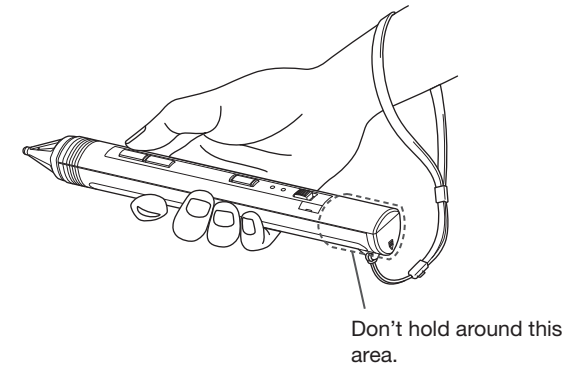
How to hold the interactive pen

Hold the interactive pen in the similar way as you hold a normal pen or a remote control.

Holding like a pen



Holding like a remote control

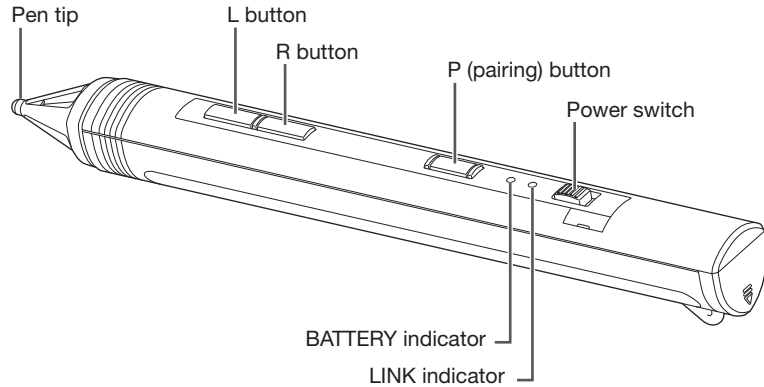


Operation

When operating the interactive pen, see also the manuals supplied with the projector and the computer.

Preparation:

- Connect the projector to the computer using the USB cable supplied with the projector.
- Configure the settings for using the interactive pen in the menu of the projector.
- Project the image supplied from the computer.



1. Turn the power switch to ON.

- The LINK indicator blinks green and the interactive pen starts searching for the operable projector.
- When the projector is found, the LINK indicator illuminates in red or blinks rapidly, showing that the computer is operable via the projector.
- When the projector isn't found or the interactive pen isn't operated for a certain period of time, the LINK and BATTERY indicators illuminate in red and then go off, and the interactive pen turns in low power mode.

2. Operate the computer using the buttons described below while viewing the projected images.

Button	Function
L button	This button works as the left button of a mouse. (When pressed, it works as the click operation, and when the interactive pen is moved while the button is pressed, it works as the drag operation.) Pressing this button during the low power mode resumes the operation mode.
Pen tip	When this button is pushed to the projected screen, it works as pressing the L button.
R button	This button works as the right button of a mouse. (When pressed, it works as the click operation, and when the interactive pen is moved while the button is pressed, it works as the drag operation.) Pressing this button during the low power mode resumes the operation mode.
P button	When this button is held down, the mode of the interactive pen switches to the pairing preparation mode. When this button and the R button are held down at the same time, the pairing setting is cancelled. (For the details of the pairing, see the User Manual supplied with the projector.)

3. After the operation is completed, turn the power switch to OFF.

Indicators

The condition of the interactive pen is notified by the illumination status of the BATTERY and LINK indicators.

• When the pairing isn't set

BATTERY	LINK	Condition
○ Off	○ → ☀ Blinking green (Repeating "blinks twice in 0.5 second and goes off for 0.5 second")	Searching the projector that can be operated with the interactive pen
○ Off	☀ or ○ → ☀ Blinking red or Blinking red (rapidly)	Interactive pen is in operation.
○ Off	○ → ☀ Blinking green (once every 3 seconds)	Communicating with the projector ^{*1}

• When the pairing is set

BATTERY	LINK	Condition
○ Off	○ → ☀ Blinking green (four times a second)	During the pairing preparation mode (searching for the projector to be paired with)
○ Off	○ → ☀ Blinking green (once a second) three times	The pairing with the projector is established or cancelled.
○ Off	☀ or ○ → ☀ Blinking red or Blinking red (rapidly)	Interactive pen is in operation.
○ Off	○ → ☀ Blinking green (once every 3 seconds)	Communicating with the projector ^{*1}
○ Off	○ → ☀ Blinking red five times	The supported projector isn't detected during the pairing preparation mode.
○ Off	○ → ☀ Blinking green (twice a second)	Searching the paired projector

• During the low power mode

BATTERY	LINK	Condition
☀ Steady red	☀ Steady red	Shifting to the low power mode
○ Off	○ Off	During the low power mode

• When the error occurs

BATTERY	LINK	Condition
○ Off	☀ → ☀ Blinking green/red	Communication error occurs. → Turn off the power of the interactive pen once, and after a few seconds, turn it on again.

*1: Such as the case that the Interactive Mode setting of the projector is turned Off while the interactive pen is operated.

Troubleshooting

Before asking for repair of the interactive pen, check the following.

Problem	Solution
The interactive pen doesn't work at all or it works intermittently.	<ul style="list-style-type: none">• When the BATTERY indicator is blinking or illuminating, the batteries become exhausted. Replace the batteries.• When the room is well lit, dim the lighting.• When you use the interactive pen and the mouse at the same time, point the pen tip away from the screen while using the mouse.
Click operation doesn't work properly.	Hold the interactive pen firmly during the click operation.
Mouse pointer is placed on the improper position of the screen or the movement of the mouse pointer is restricted to the certain area of the screen.	Check that the projector projects the images supplied from the computer.

Specifications

The specifications and outside appearance are subject to change without prior notice.

Operation frequency	2.4 GHz ISM band
Operation temperature	15°C - 35°C
Operation humidity	30% - 90%
Power consumption	
Dimensions (W x H x D)	x x mm
Weight	g