



**EMC Technologies Pty Ltd**

ABN 82 057 105 549  
Unit 3/87 Station Road  
Seven Hills NSW 2147 Australia

**Telephone** +61 2 9624 2777  
**Facsimile** +61 2 9838 4050  
**Email** [syd@emctech.com.au](mailto:syd@emctech.com.au)  
**[www.emctech.com.au](http://www.emctech.com.au)**

**APPENDIX D  
OF  
TEST REPORT T61218\_F**

**PHOTOGRAPHS OF TEST SAMPLE (INTERIOR)**

**FCC ID:** TVN-MARS-24  
**Manufacturer:** Magellan Technology  
**Test Sample:** RFID Terminal  
**Model:** MARS24  
**Serial Number:** Production Prototype

**Date:** 15<sup>th</sup> January 2007

### APPENDIX D1 PHOTOGRAPHS TEST SAMPLE (INTERIOR)

#### EUT Internal



### APPENDIX D2 PHOTOGRAPHS TEST SAMPLE (INTERIOR)

PCB 1, Top Side

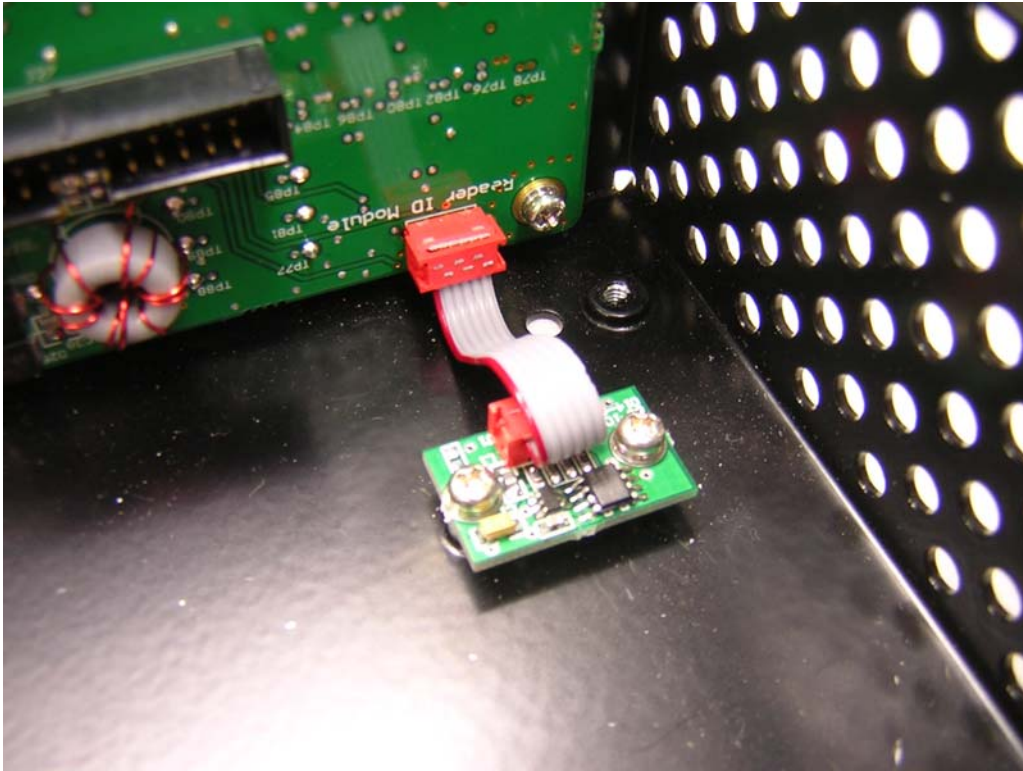


PCB 1, Bottom Side

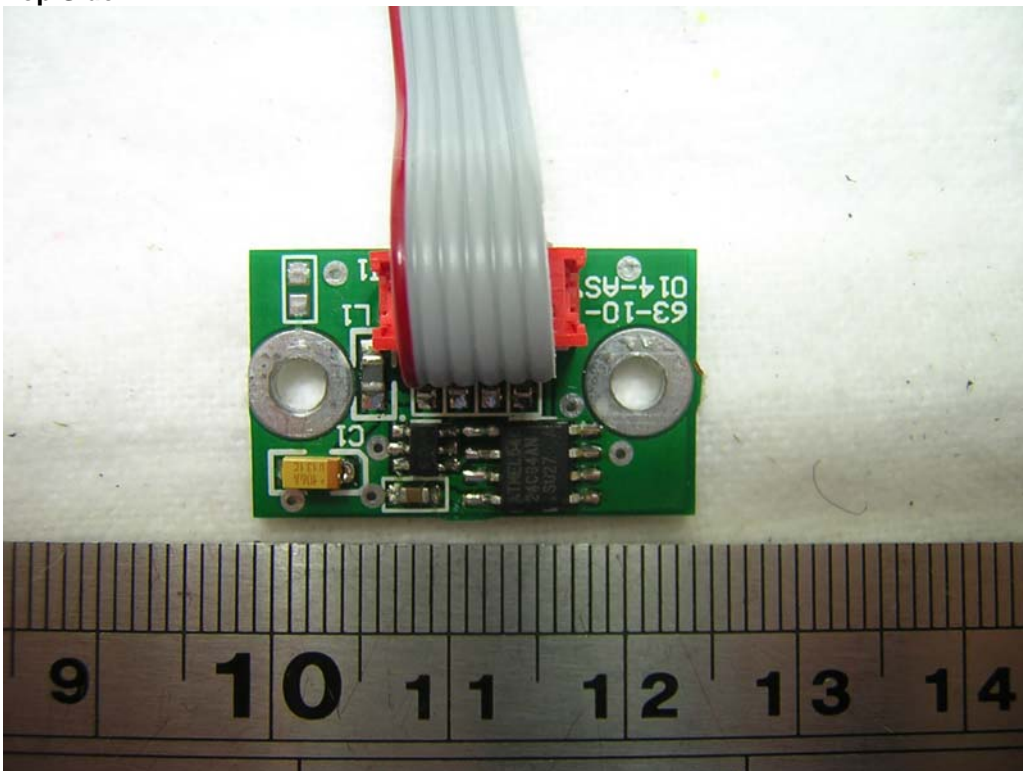


**APPENDIX D3  
PHOTOGRAPHS TEST SAMPLE (INTERIOR)**

**PCB 2**

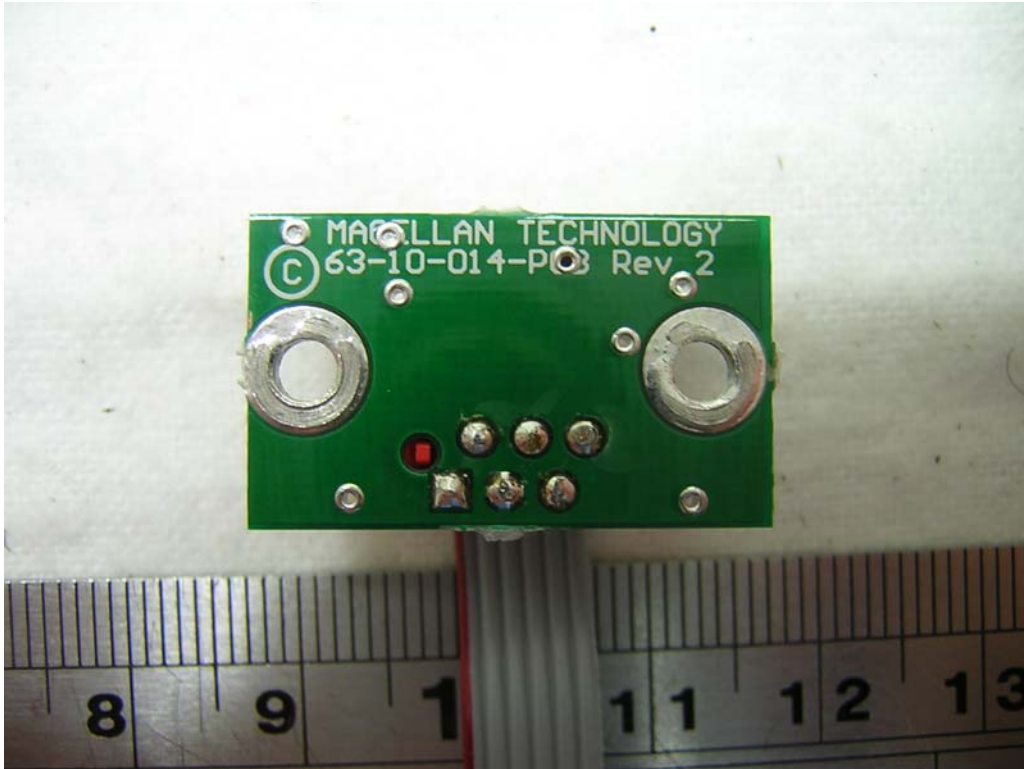


**PCB 2, Top Side**

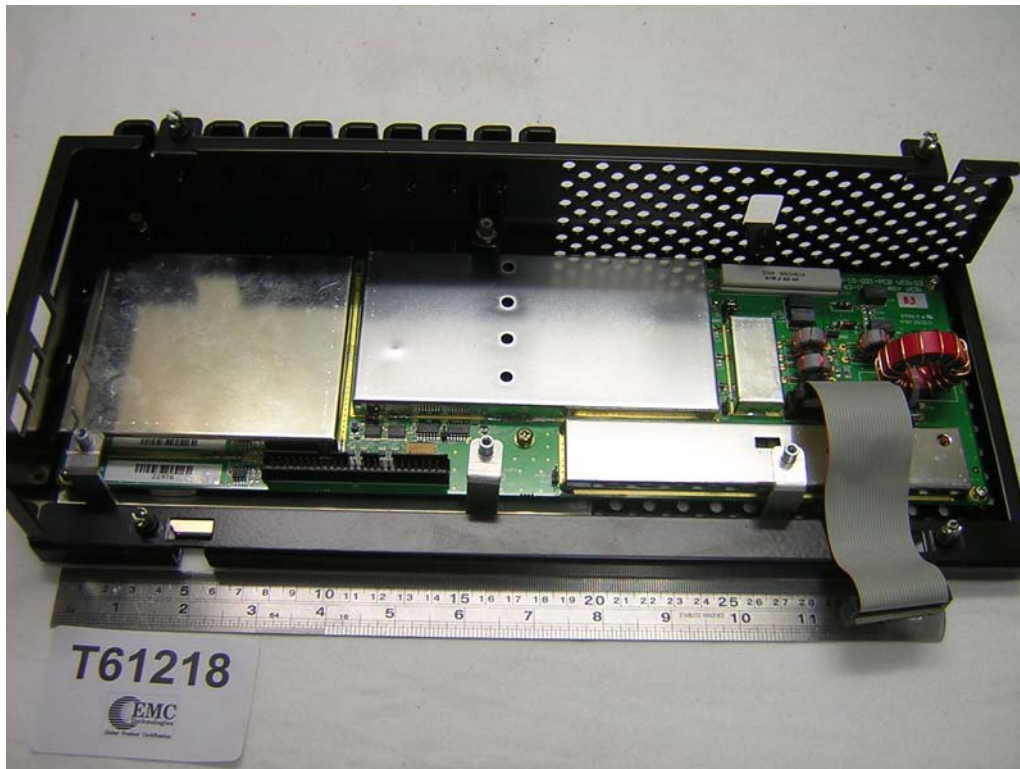


### APPENDIX D4 PHOTOGRAPHS TEST SAMPLE (INTERIOR)

PCB 2, Bottom Side



### APPENDIX D5 PHOTOGRAPHS TEST SAMPLE (INTERIOR)

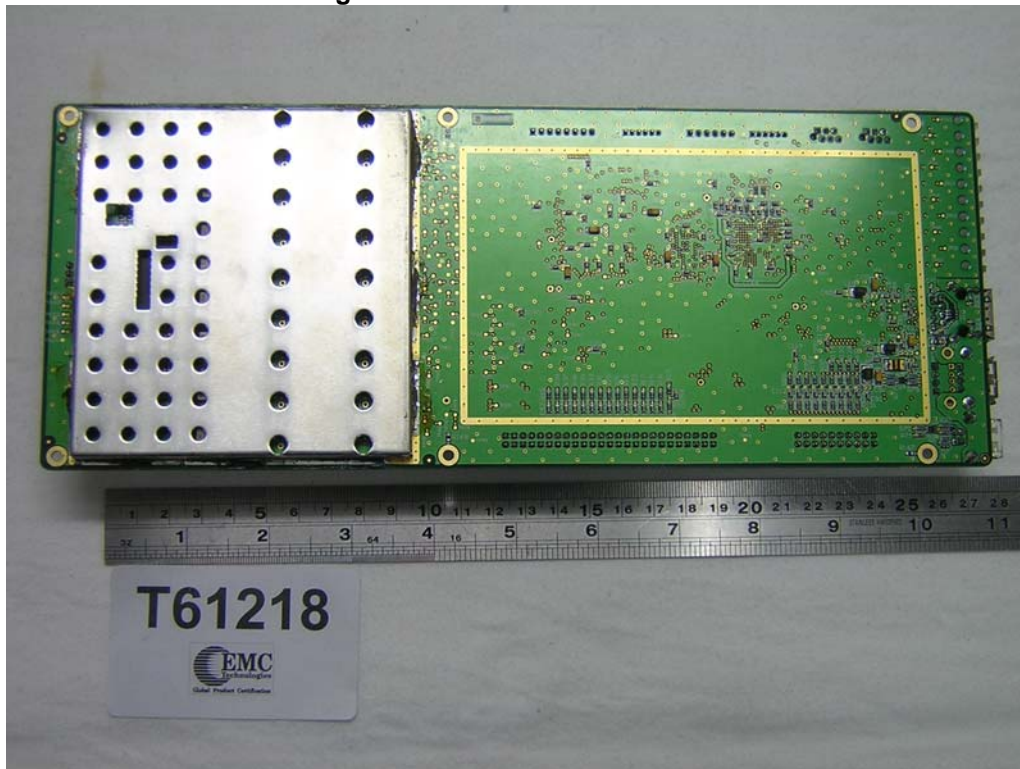


PCB 3, Top Side with Shielding

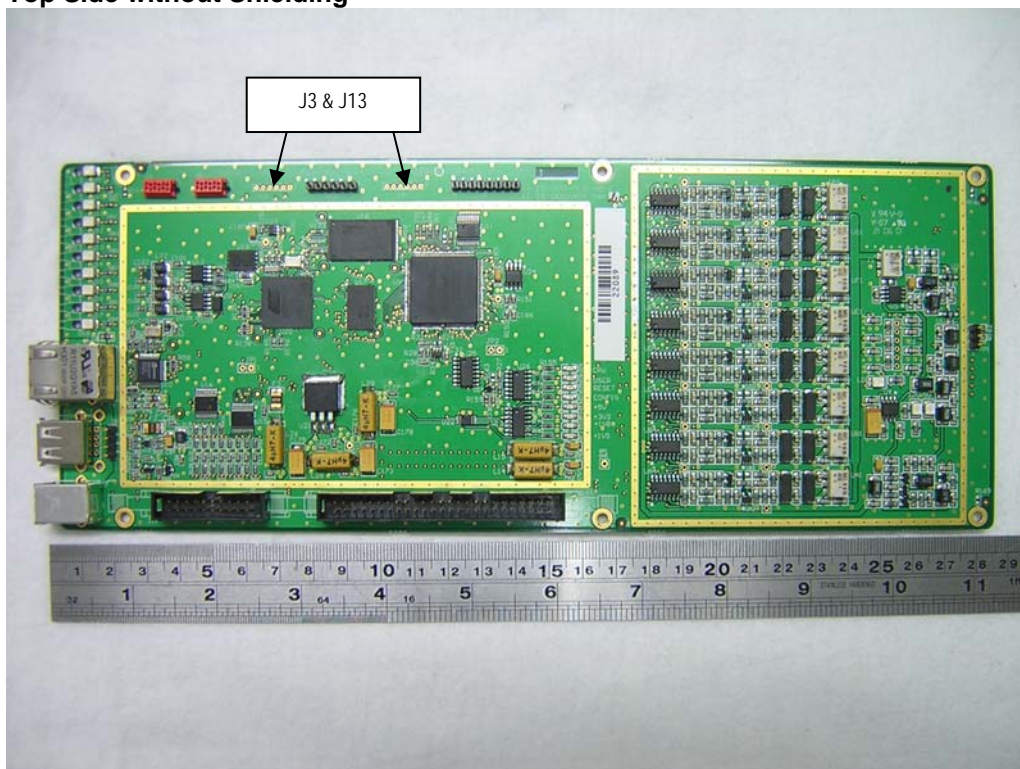


### APPENDIX D6 PHOTOGRAPHS TEST SAMPLE (INTERIOR)

PCB 3, Bottom Side with Shielding



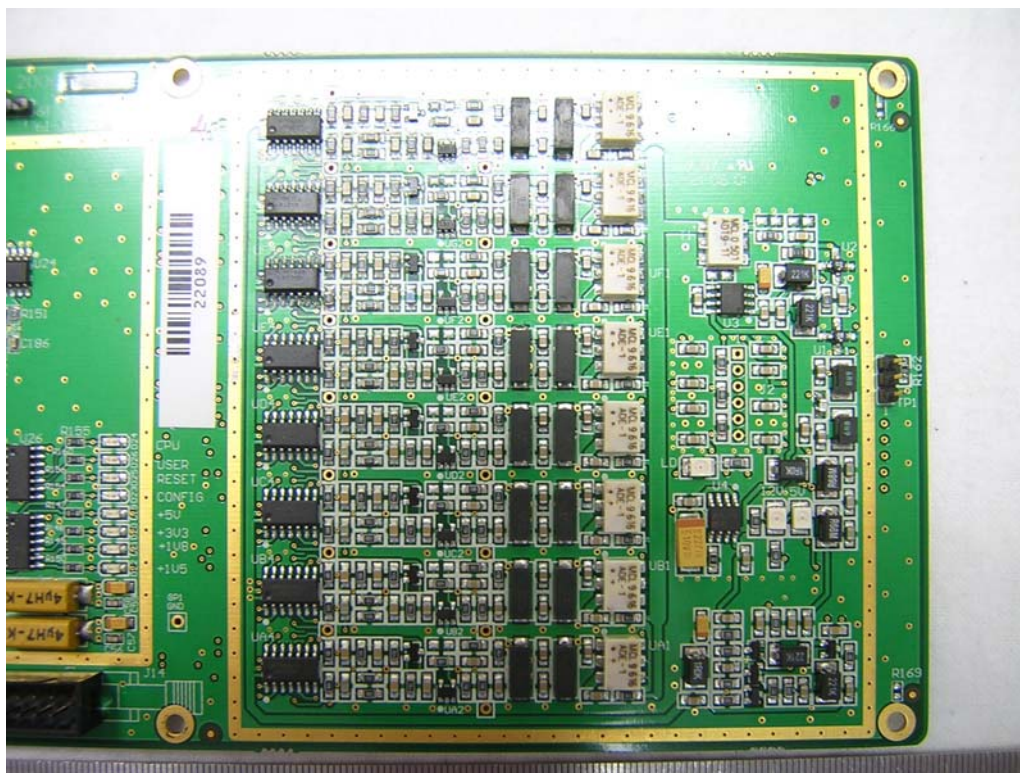
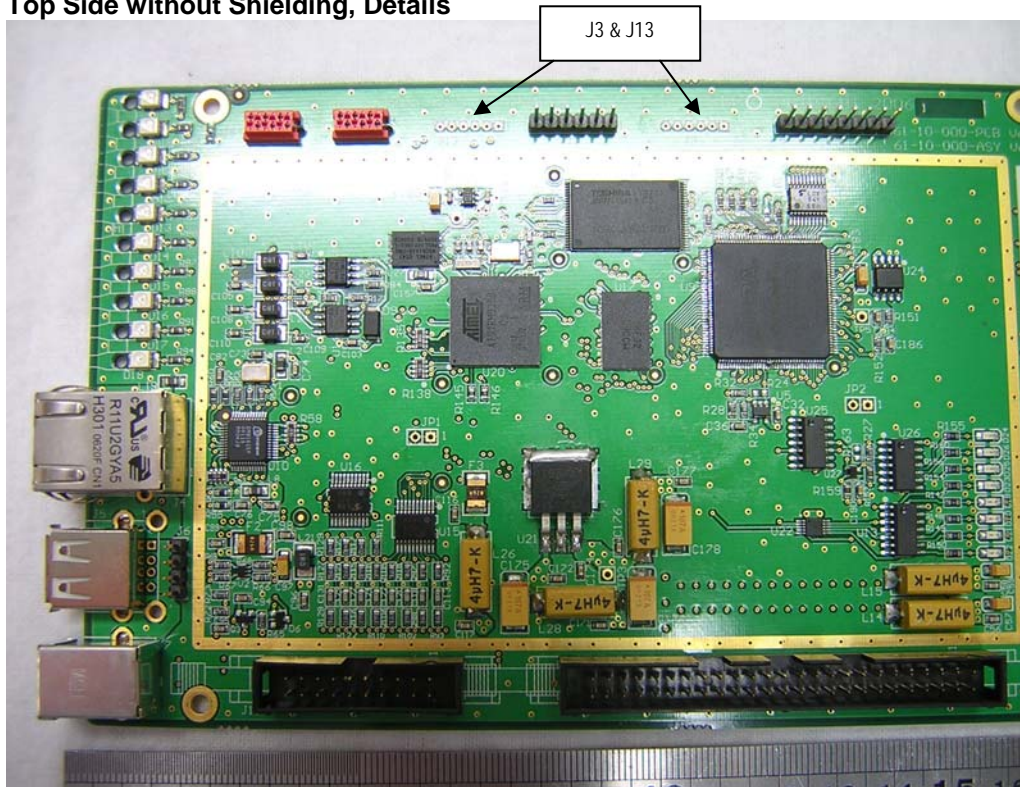
PCB 3, Top Side without Shielding



**Note: J3 & J13 header pins are not loaded in production as this are only used as test points**

### APPENDIX D7 PHOTOGRAPHS TEST SAMPLE (INTERIOR)

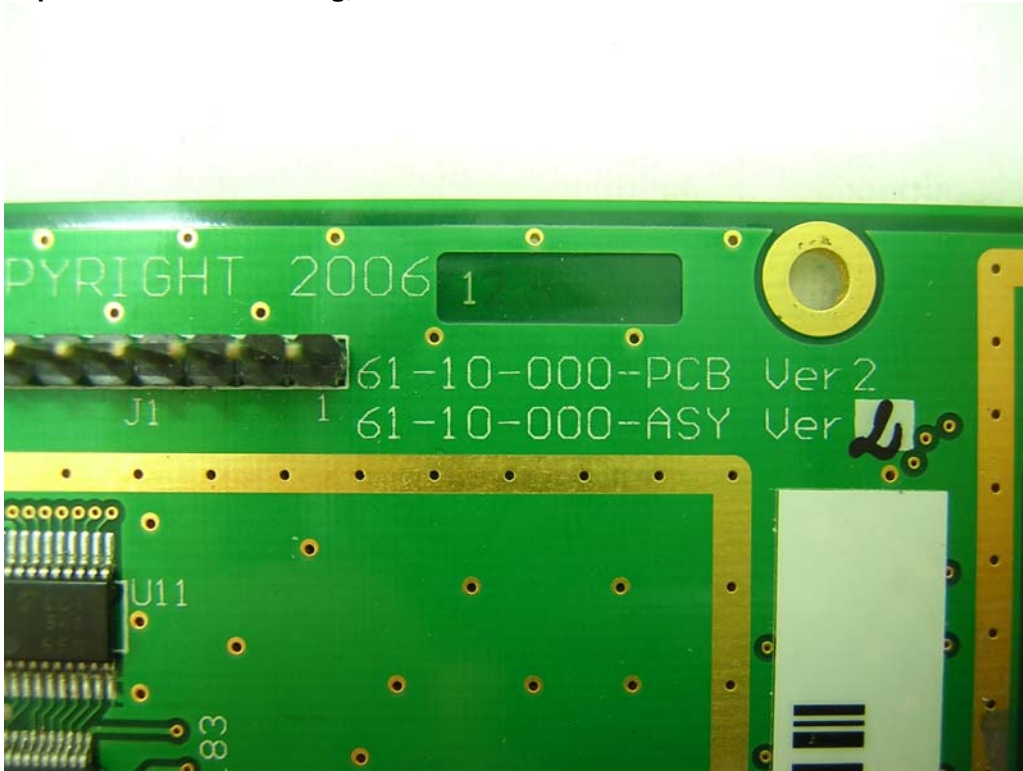
PCB 3, Top Side without Shielding, Details



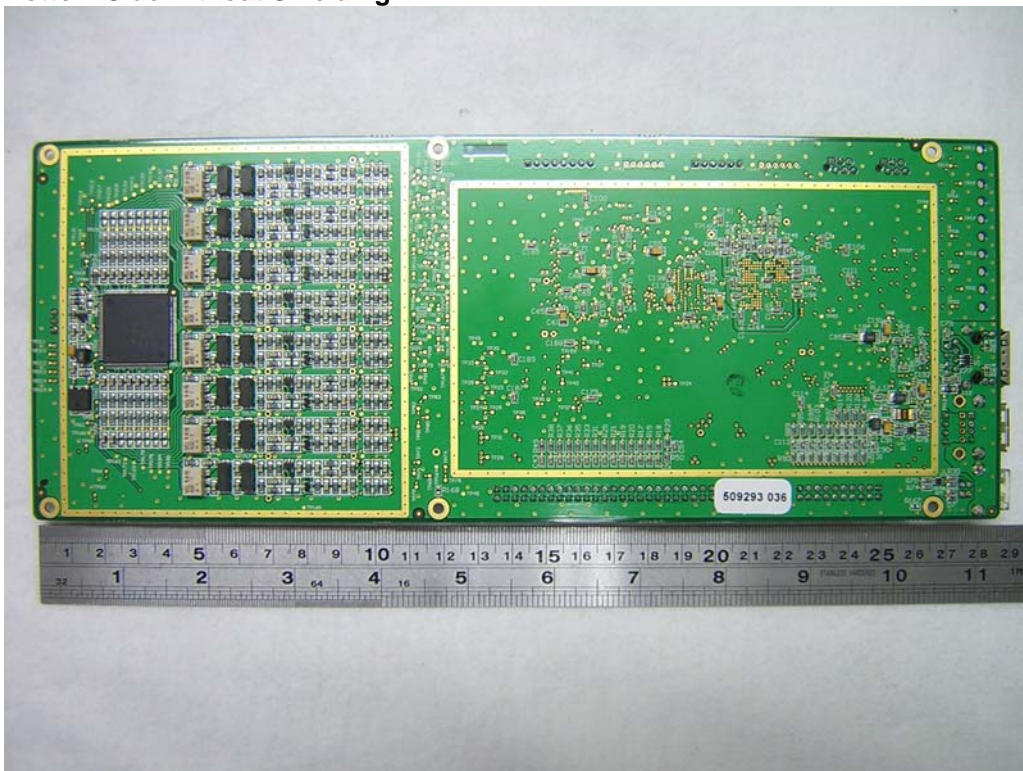


### APPENDIX D8 PHOTOGRAPHS TEST SAMPLE (INTERIOR)

PCB 3, Top Side without Shielding, Details

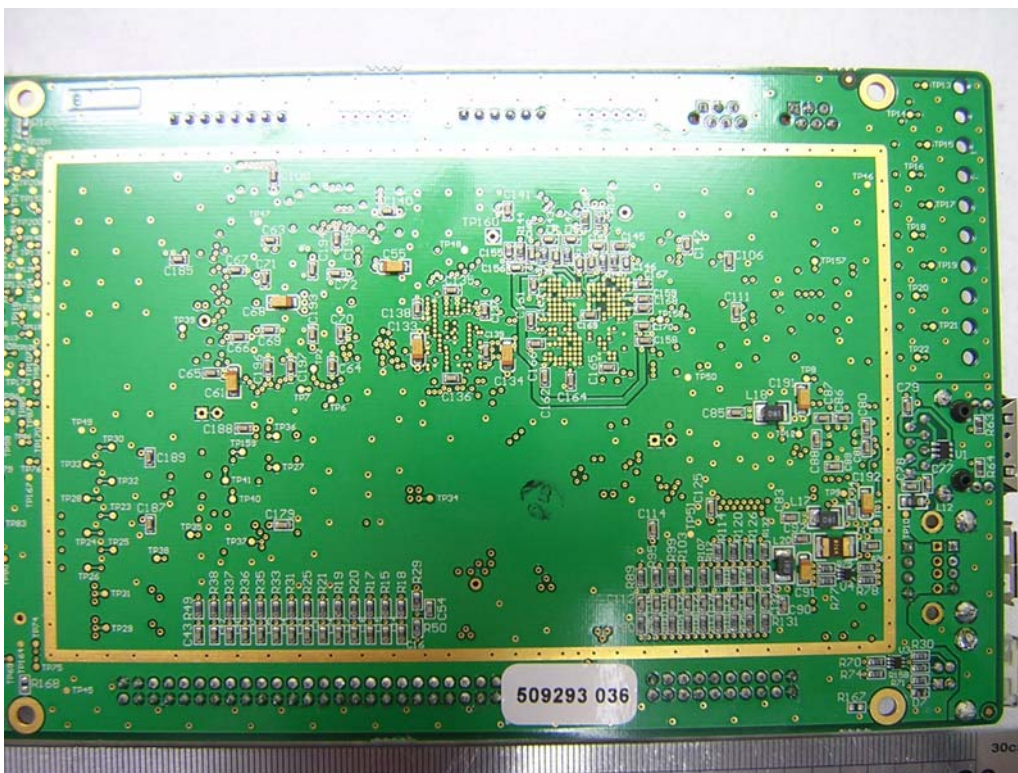
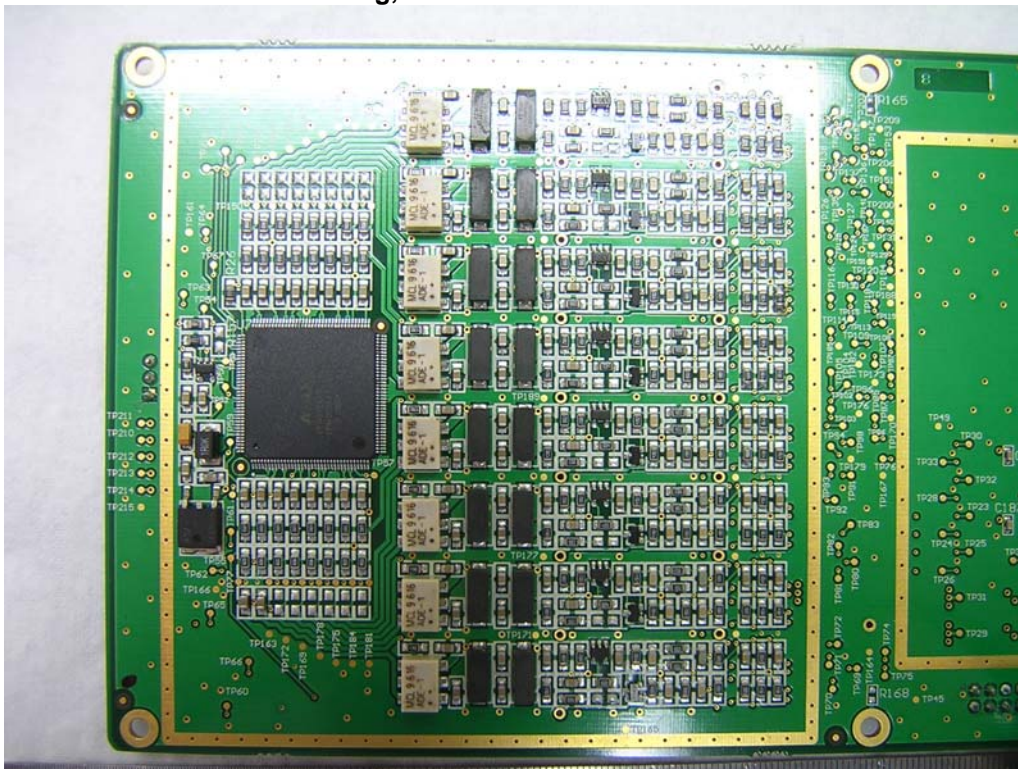


PCB 3, Bottom Side without Shielding



### APPENDIX D9 PHOTOGRAPHS TEST SAMPLE (INTERIOR)

**PCB 3, Bottom Side without Shielding, Details**

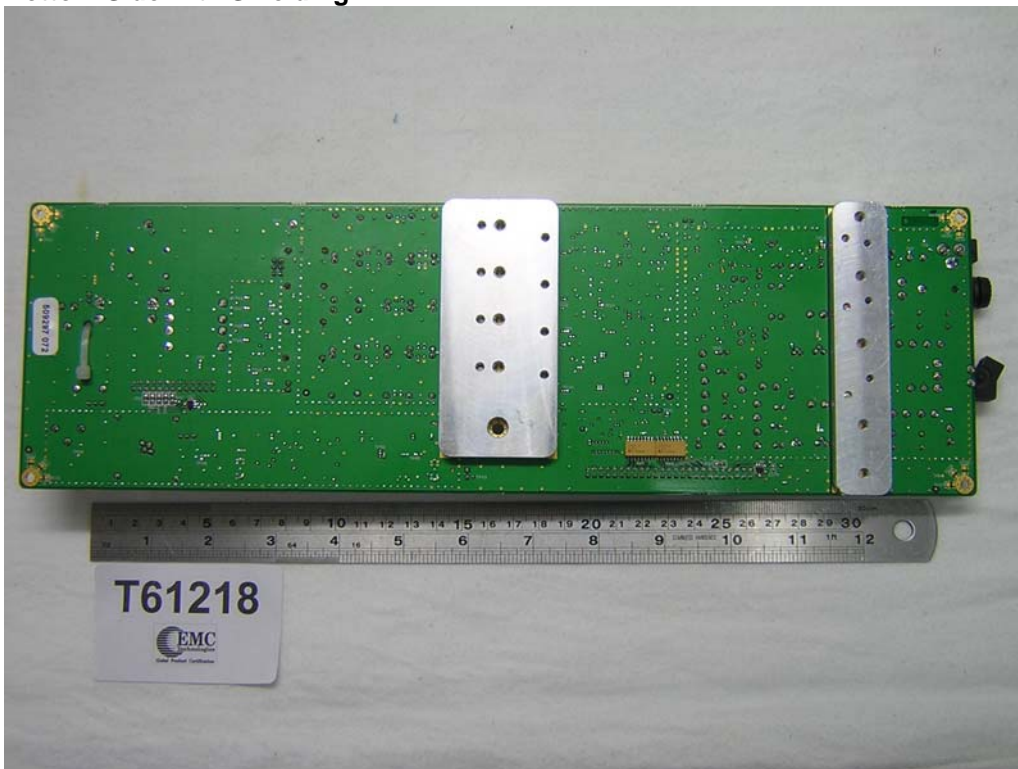


### APPENDIX D10 PHOTOGRAPHS TEST SAMPLE (INTERIOR)

PCB 4, Top Side with Shielding

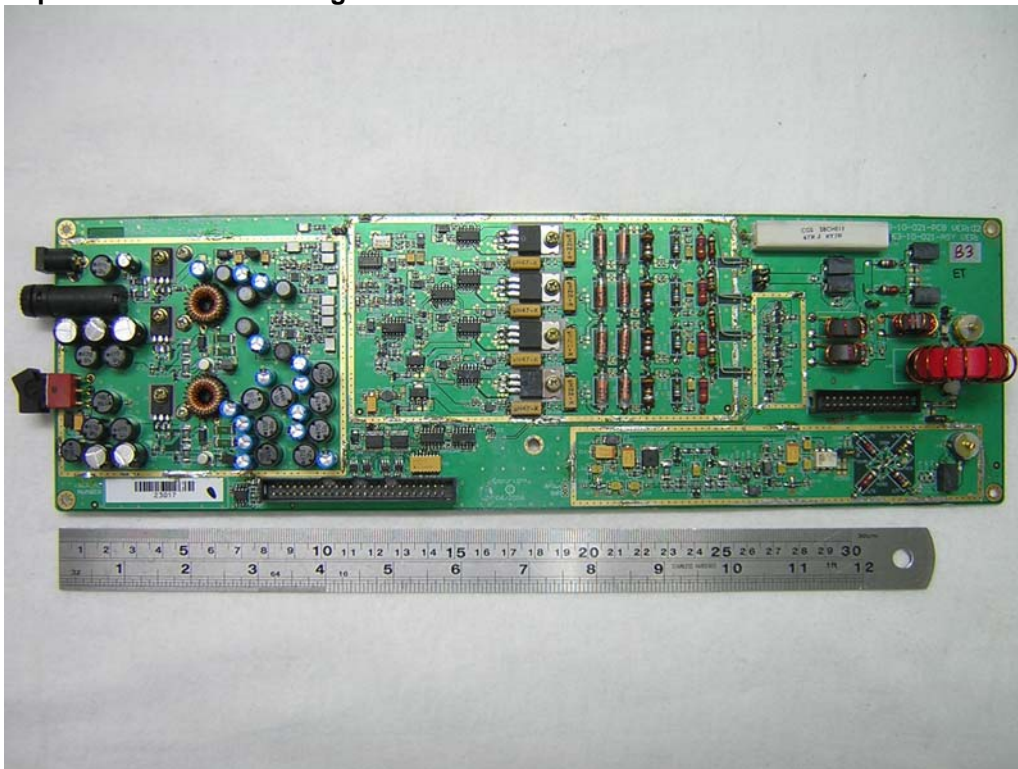


PCB 4, Bottom Side with Shielding

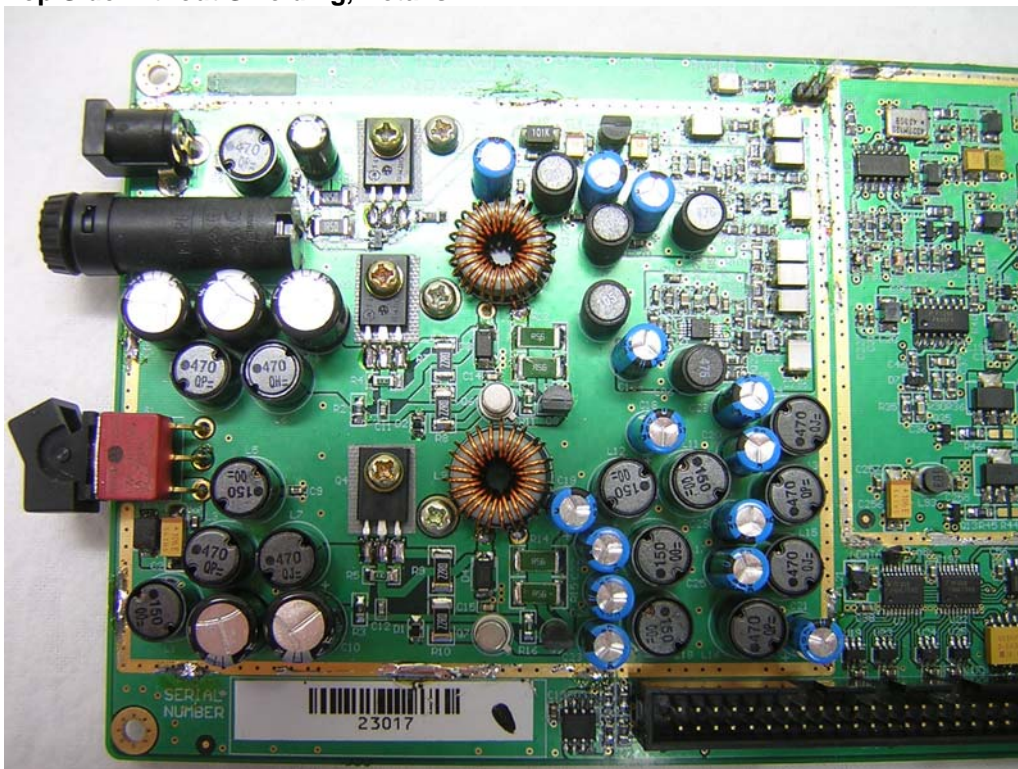


### APPENDIX D11 PHOTOGRAPHS TEST SAMPLE (INTERIOR)

PCB 4, Top Side without Shielding

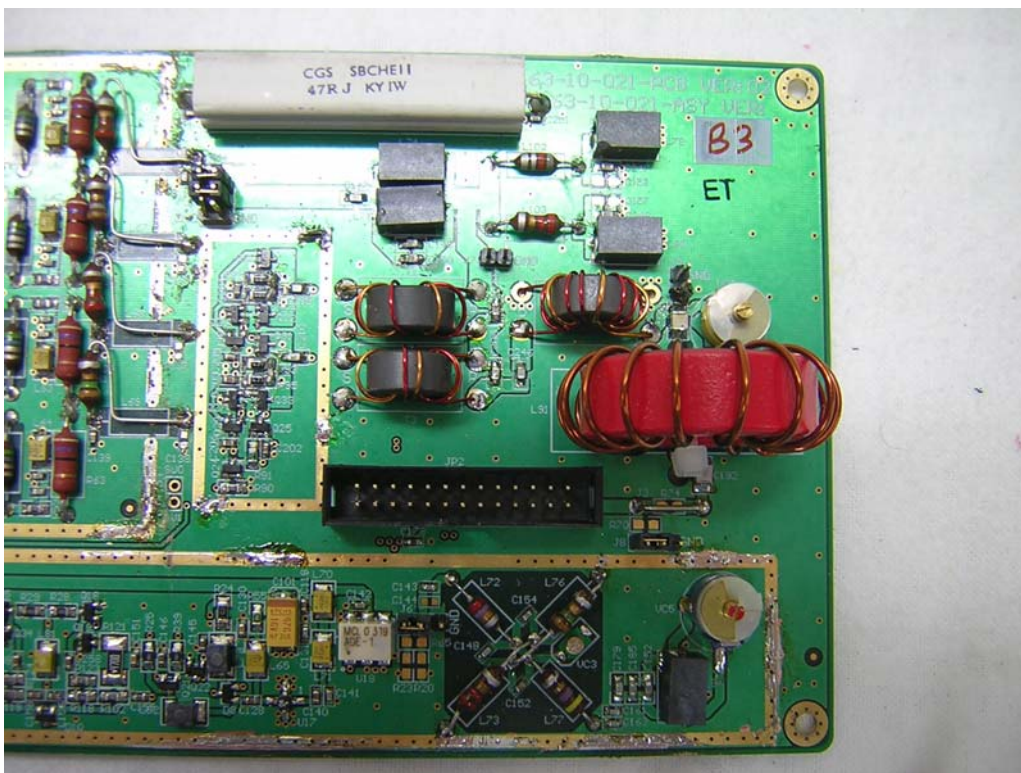
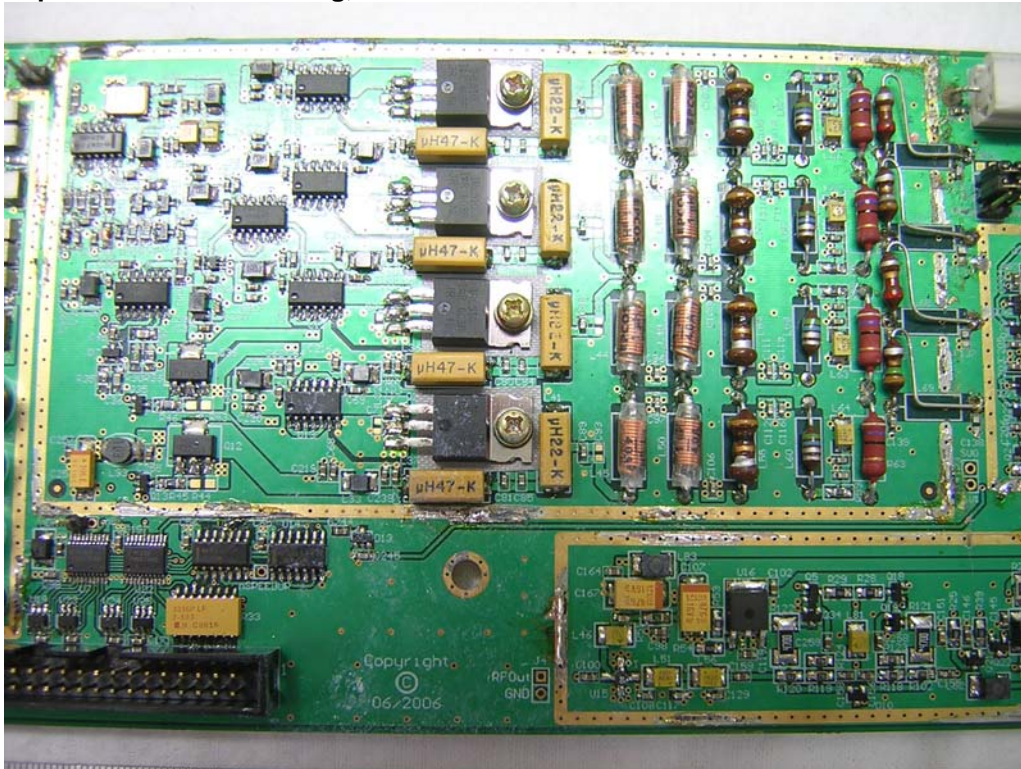


PCB 4, Top Side without Shielding, Details



### APPENDIX D12 PHOTOGRAPHS TEST SAMPLE (INTERIOR)

PCB 4, Top Side without Shielding, Details

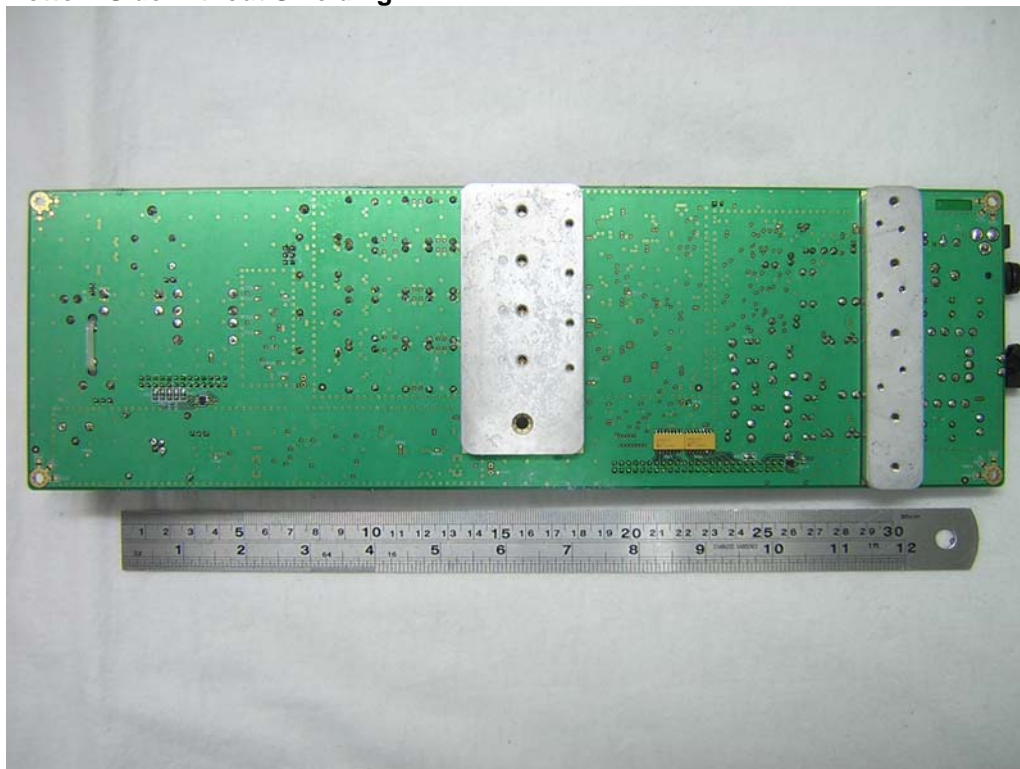


### APPENDIX D13 PHOTOGRAPHS TEST SAMPLE (INTERIOR)

PCB 4, Top Side without Shielding, Details

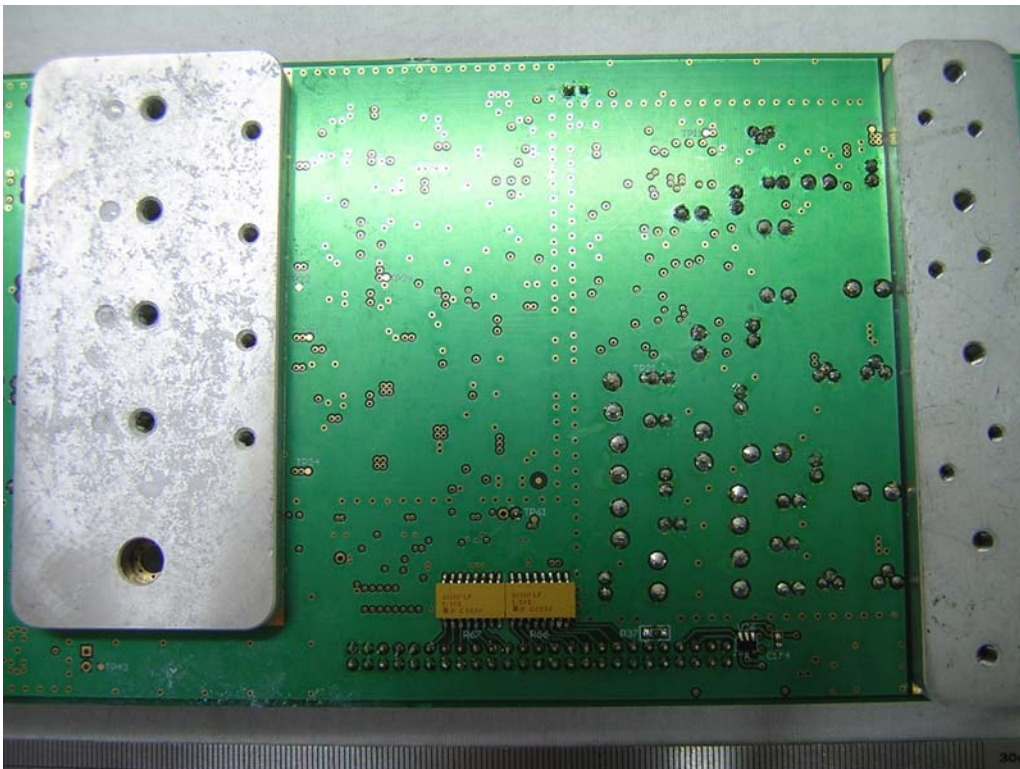
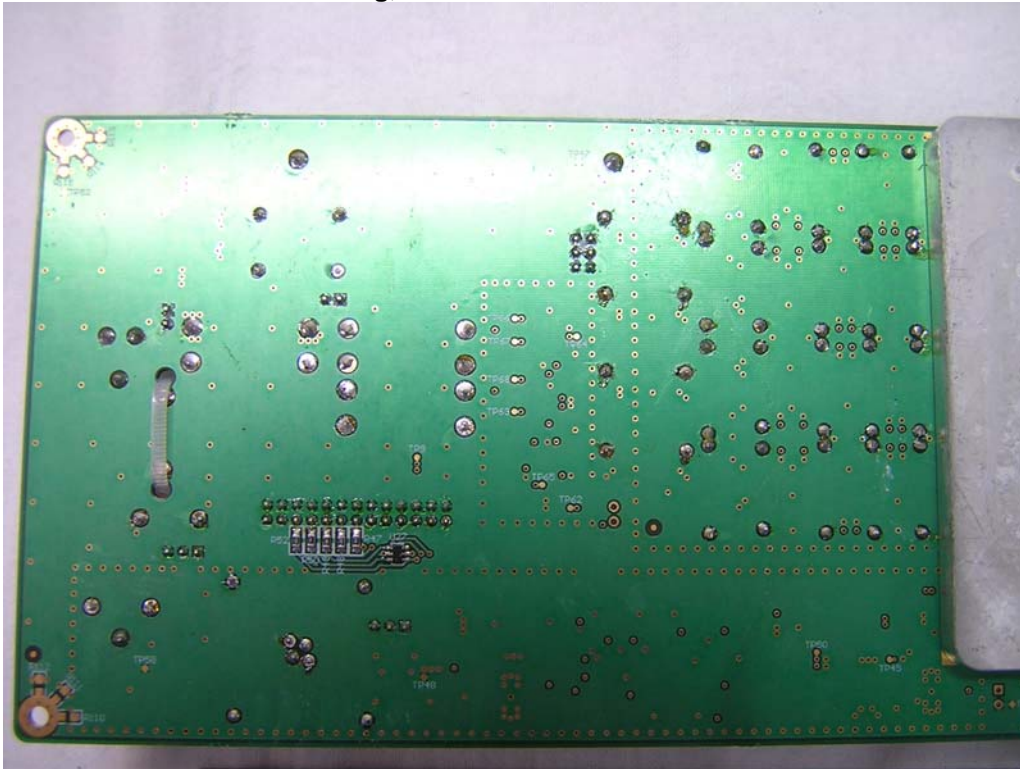


PCB 4, Bottom Side without Shielding



### APPENDIX D14 PHOTOGRAPHS TEST SAMPLE (INTERIOR)

PCB 4, Bottom Side without Shielding, Details



**APPENDIX D15  
PHOTOGRAPHS TEST SAMPLE (INTERIOR)**

**PCB 4, Bottom Side without Shielding, Details**

