



Emission below 1GHz
5GHz WIFI 802.11n HT20 (LF)

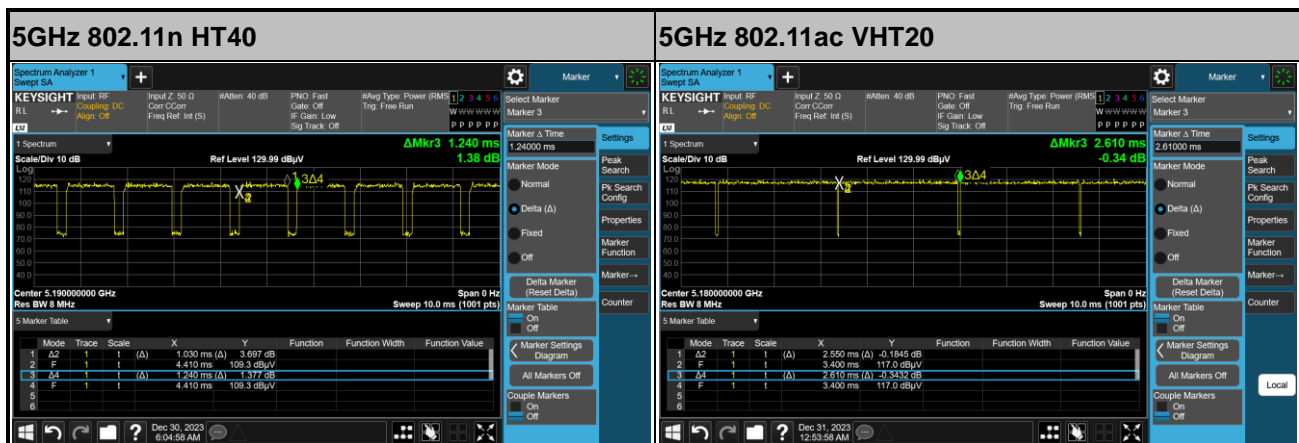
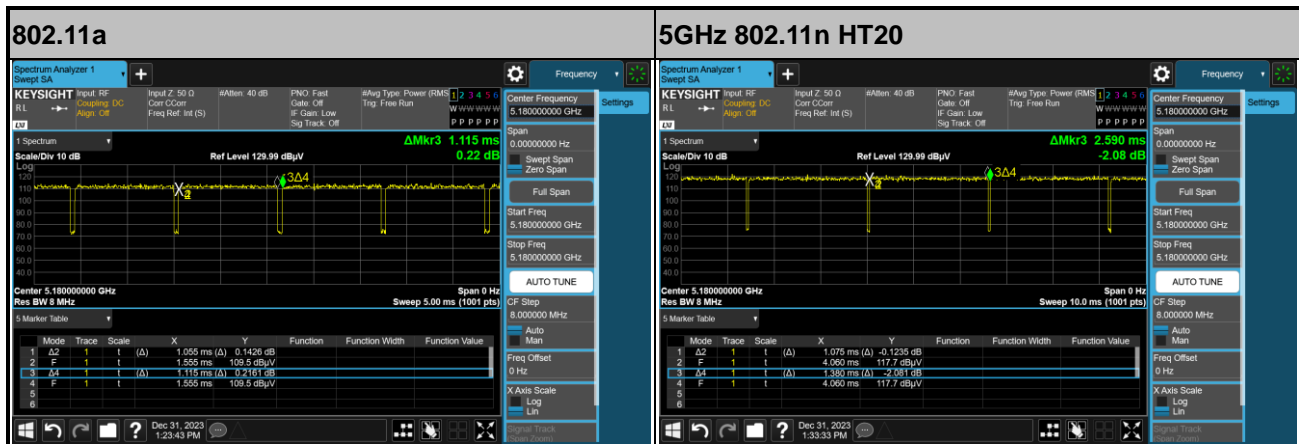
WIFI	5GHz WIFI	
ANT	802.11n HT20 LF	
3+6	Horizontal	Vertical
QP / Peak	<p>Site : 03CH15-HV Condition : QP-3m 1581LOG_230318_16 HORIZONTAL :</p>	<p>Site : 03CH15-HV Condition : QP-3m 1581LOG_230318_16 VERTICAL :</p>



Appendix E. Duty Cycle Plots

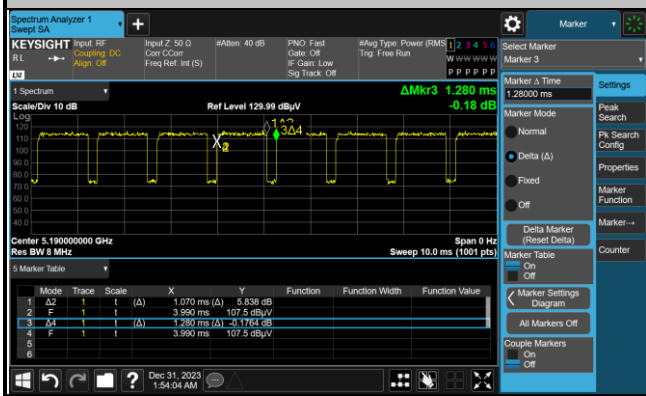
Antenna	Band	Duty Cycle(%)	T(us)	1/T(kHz)	VBW Setting
3+6	802.11a	94.62	1055	0.95	1kHz
3+6	5GHz 802.11n HT20	77.90	1075	0.93	1kHz
3+6	5GHz 802.11n HT40	83.06	1030	0.97	1kHz
3+6	5GHz 802.11ac VHT20	95.51	2550	0.39	430Hz
3+6	5GHz 802.11ac VHT40	83.59	1070	0.93	1kHz
3+6	5GHz 802.11ac VHT80	77.54	1070	0.93	1kHz
3+6	5GHz 802.11ax HE20 Full RU	76.31	950	1.05	1.1kHz
3+6	5GHz 802.11ax HE40 Full RU	81.58	930	1.08	1.1kHz
3+6	5GHz 802.11ax HE80 Full RU	75.00	930	1.08	1.1kHz

MIMO <Ant. 3+6>

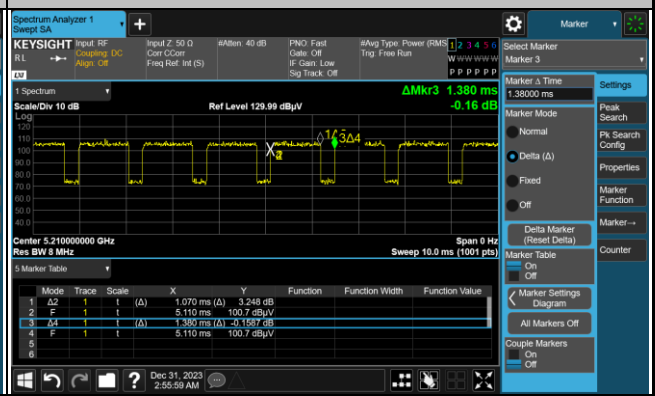




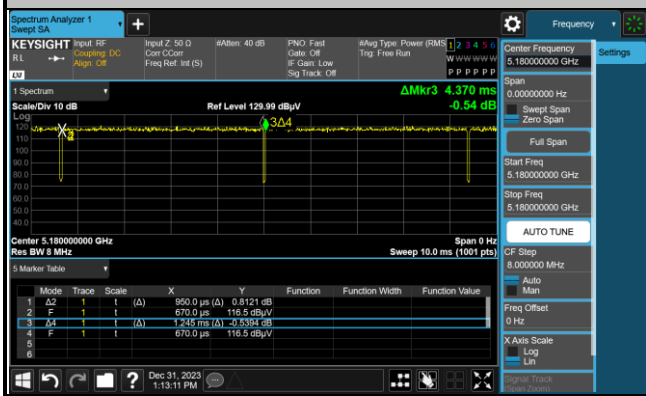
5GHz 802.11ac VHT40



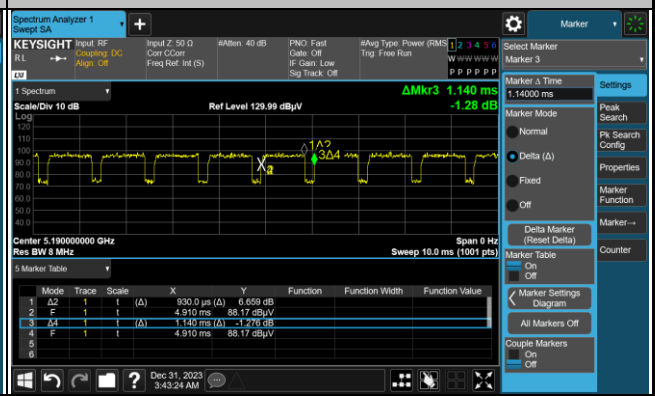
5GHz 802.11ac VHT80



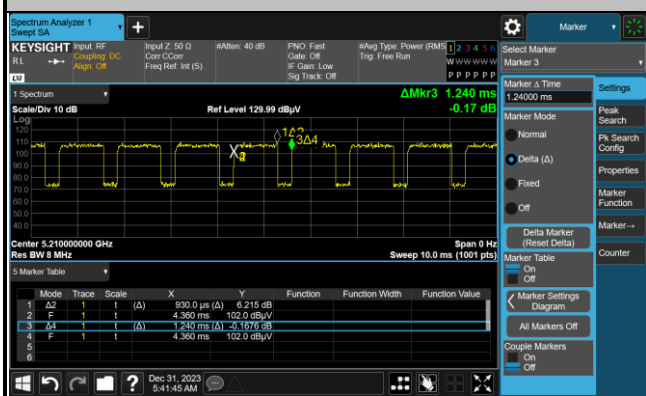
5GHz 802.11ax HE20 Full RU



5GHz 802.11ax HE40 Full RU



5GHz 802.11ax HE80 Full RU



Appendix F. Setup Photographs

<Conducted Emission>

Remote View





Rear View

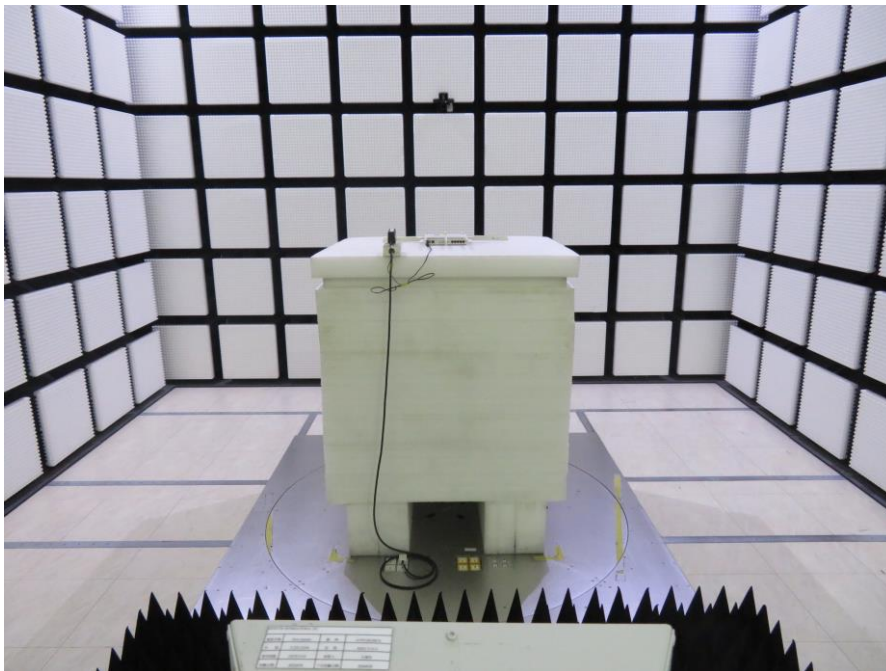


<Radiated Emission>

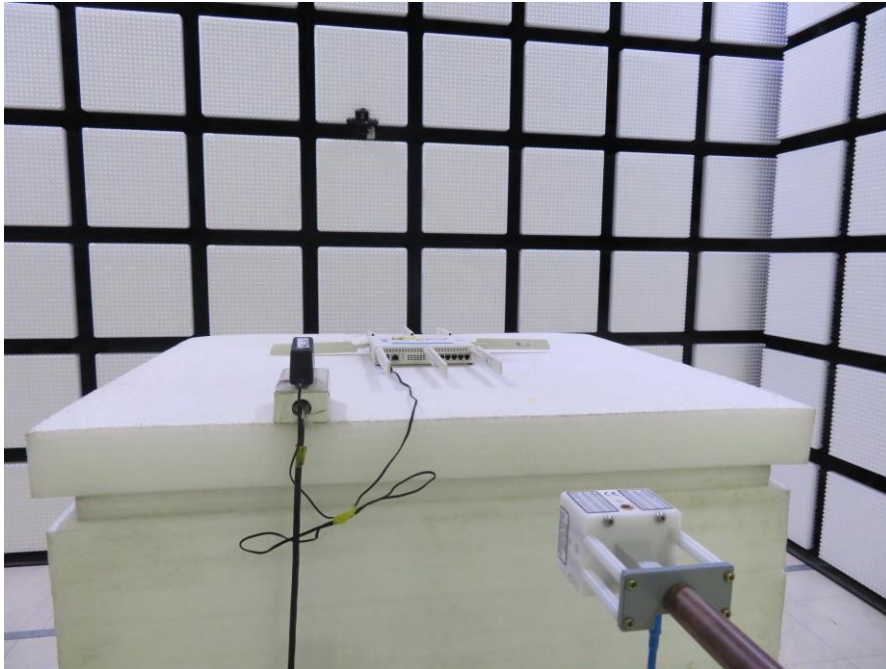
LF



HF



SHF



————THE END————