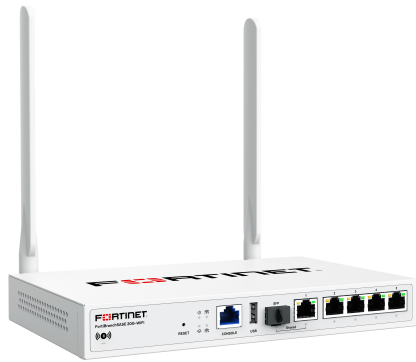




FORTINET



FortiBranchSASE 20G/20G-WiFi

FBS-20G/FBS-20G-WiFi

QuickStart Guide





FORTINET®

October 22, 2024

Copyright © 2024 Fortinet, Inc. All rights reserved. Fortinet®, FortiGate®, FortiCare® and FortiGuard®, and certain other marks are registered trademarks of Fortinet, Inc., and other Fortinet names herein may also be registered and/or common law trademarks of Fortinet. All other product or company names may be trademarks of their respective owners. Performance and other metrics contained herein were attained in internal lab tests under ideal conditions, and actual performance and other results may vary. Network variables, different network environments and other conditions may affect performance results. Nothing herein represents any binding commitment by Fortinet, and Fortinet disclaims all warranties, whether express or implied, except to the extent Fortinet enters a binding written contract, signed by Fortinet's SVP Legal and above, with a purchaser that expressly warrants that the identified product will perform according to certain expressly-identified performance metrics and, in such event, only the specific performance metrics expressly identified in such binding written contract shall be binding on Fortinet. For absolute clarity, any such warranty will be limited to performance in the same ideal conditions as in Fortinet's internal lab tests. Fortinet disclaims in full any covenants, representations, and guarantees pursuant hereto, whether express or implied. Fortinet reserves the right to change, modify, transfer, or otherwise revise this publication without notice, and the most current version of the publication shall be applicable.





Register for Support

Register your Fortinet product to receive:

- Technical Support
- New product features
- Protection from new threats

Vous devez enregistrer le produit pour recevoir:

- Support technique
- Nouvelles fonctionnalités du produit
- Protection contre de nouvelles menaces

La reistruzione ti permette di usufruire di:

- Supporto Tecnico
- Nuove funzionalita
- Protezione dalle ultime minacce

Debe registrar el producto para recibir:

- Apoyo técnico
- Nuevas funcionalidades del producto
- Protección contra ataques

登録のお願い

本日、フォーティネット製品の登録をしてください。

登録すると次のメリットがあります。

テクニカルサポート・新機能の追加・新しい脅威への防御

请马上注册

您的飞塔产品

您在注册以后才能得到技术支持、新产品特点信息、最新威胁防护

<https://support.fortinet.com>

Toll free: 1 866 648 4638

Phone: 1 408 486 7899

Fax: 1 408 235 7737

Email: register@fortinet.com



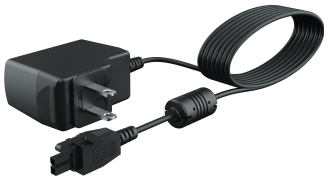
Package Contents



FortiBranchSASE Device



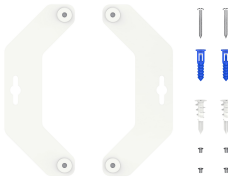
QuickStart Guide



12VDC/2A Power Adapter
(DC end with 2-pin locking plug)



WiFi Antennas
(FBS-20G-WiFi Only)

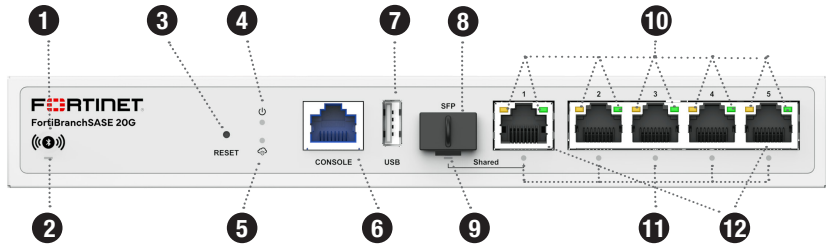


Wall-Mounting Kit
(2 Wall-Mount Brackets, 4 Bracket
Screws, 2 Wall-Mount Screws, and 4
Wall-Mount Anchors)



Rubber Feet

FBS-20G Front Panel



- | | |
|------------------------------|--------------------------------|
| 1 Bluetooth Button | 7 USB 2.0 Port |
| 2 Bluetooth LED | 8 SFP Port |
| 3 RESET/Default Key | 9 SFP LED |
| 4 Power LED | 10 GbE LEDs 1-5 |
| 5 FortiSASE LED | 11 WAN LEDs |
| 6 Console Port (RJ45) | 12 GbE Ports 1-5 (RJ45) |



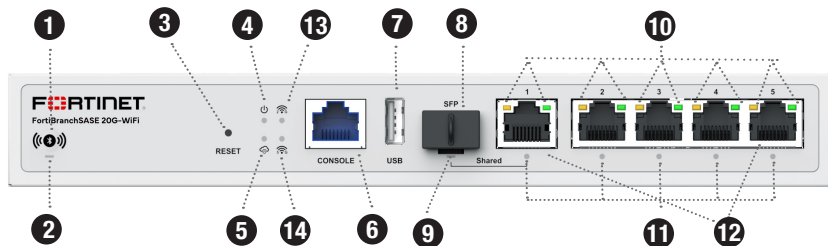
FBS-20G Rear Panel



- A** Power Input (A 12VDC/2A power adapter with a 2-pin locked plug is required.)
- B** Grounding Screw



FBS-20G-WiFi Front Panel



- 1 Bluetooth Button
- 2 Bluetooth LED
- 3 RESET/Default Key
- 4 Power LED
- 5 FortiSASE LED
- 6 Console Port (RJ45)
- 7 USB 2.0 Port

- 8 SFP Port
- 9 SFP LED
- 10 GbE LEDs 1-5
- 11 WAN LEDs
- 12 GbE Ports 1-5 (RJ45)
- 13 2.4G WiFi LED
- 14 5G WiFi LED



FBS-20G-WiFi Rear Panel



- a** Power Input (A 12VDC 2A power adapter with a 2-pin locked plug is required.)
- b** Grounding Screw
- c** 2.4G/5G Antenna Connectors





LED Indicators

2 Bluetooth (Blue/Green)

Green Solid: Configuration window is open.

Blue Flashing: : Configuration in progress.

Blue Solid: Configuration completed. The LED is to turn off in five seconds.

Off: No Bluetooth configuration is allowed.

4 Power (12VDC/2A)

Off: Device is off.

Green Solid: Device is on.

Green Flashing: Device is booting up.

Amber: System is in error.

5 FortiSASE

Green Solid: Connected to FortiSASE

Green Flashing: Connecting to FortiSASE

Amber Solid: Connection error

Green & Amber OFF: No connection

9 SFP (WAN)

Green Solid: 1G SFP network connection

Green Flashing: 1G SFP network activity

Off: No connection

10 GbE Ports 1–5 Network Capacity LEDs

(Green/Amber)

Green Solid: 1G network connected

Green Flashing: 1G network activity

Green Off: 1G network NOT connected

Amber Solid: 100M network connected

Amber Flashing: 100M network activity

Amber Off: 100M network NOT connected

11 GbE Ports 1–5 WAN LEDs (Green)

Green ON Port is configured as WAN port.

Off: Port is configured as LAN port.

13 2.4G WiFi (FBS-20G-WiFi only)

Green Solid: 2.4G WiFi LAN is on.

Green Flashing: 2.4G WiFi LAN activity

Blue Solid: 2.4G WiFi WAN is on.

Blue Flashing: 2.4G WiFi WAN activity

Off: 2.4G WiFi is off.

14 5G WiFi (FBS-20G-WiFi only)

Green Solid: 5G WiFi LAN is on.

Green Flashing: 5G WiFi LAN activity

Blue Solid: 5G WiFi WAN is on.

Blue Flashing: 5G WiFi WAN activity

Off: 5G WiFi is off.





Buttons and Ports

1 Bluetooth Button:

- Press and hold for less than 5 seconds, ignored;
- Press and hold for more than 5 seconds to turn on the Bluetooth LED and open the Bluetooth configuration window.

3 RESET/Default Key:

- Press and hold for less than 5 seconds to reset/reboot the device;
- Press and hold for longer than 5 seconds to restore the device to its factory default settings.

6 CONSOLE Port (RJ45):

- CLI management computer interface

7 USB 2.0 Port:

- USB 2.0 Type A, with 5V/0.5A power output

8 SFP Port:

- GbE SFP Port (shared with GbE Port 1)

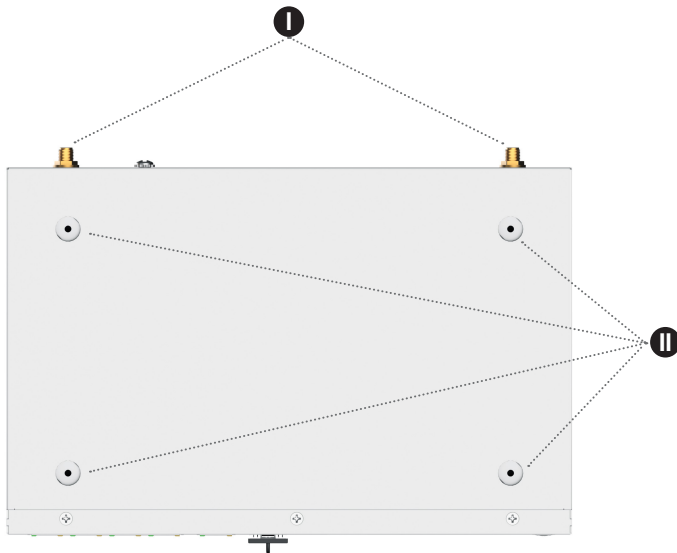
12 GbE Ports 1-5 (RJ45):

- WAN/LAN configurable GbE ports (Port 1 shared with SFP port)





Bracket Mounting Holes & Rubber Feet

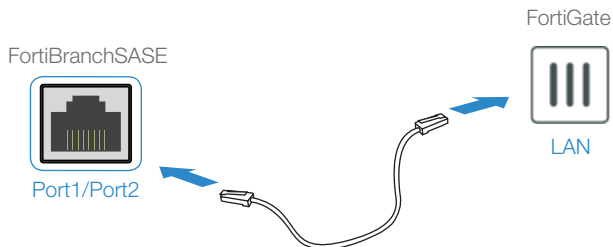


I **Connectors for WiFi Antennas** (for FBS-20G-WiFi only)

II **Dents and holes** for Rubber Feet for desktop placement and for Wall-Mounting Bracket screws.



Basic Connection



1. Insert one end of the Ethernet cable into Port1 or Port2 of your FortiBranchSASE device.
2. Insert the other end of the Ethernet cable into the LAN port of your FortiGate appliance, and ensure that the FortiGate interface provides DHCP server service to issue an IP address to the FortiBranchSASE when connected to Port1 or Port2 of the FortiBranchSASE.
3. Connect the device to a power outlet using the power adapter.



IP Configuration

After you have connected the FortiBranchSASE network interfaces, the device automatically attempts to obtain an IP address from the DHCP server. If you do not use DHCP, you must set a static IP address.

To configure a static IP address:

1. Use an Ethernet cable to connect the Port1 or Port2 of the device to the Ethernet port of your computer.
2. Set the computer Ethernet port to DHCP mode.
3. Start your web browser, and enter the default management address: 192.168.200.99.
4. For both username and password, type in “admin” and press the Enter key on your keyboard.
5. Go to Networking > Interface, where you'll see all the system interfaces.
6. Select a target interface, set it to “static” mode, configure the static IP address, and click Save.

Alternatively, FortiBranchSASE 20G-WiFi comes with a default wireless LAN management interface. You can log on to the interface at <http://192.168.200.99>, using the device's serial number as the network SSID. You can connect to it manually to access the device's GUI. It's a network with open security (no password). We strongly recommend that you change the WiFi LAN security mode right away.

To log in to the FortiBranchSASE device, start the FortiBranchSASE GUI, and in both the username and password fields, type admin and press the Enter key on your keyboard.

Note: If you are logging into the device for the first time, you will be prompted to change the default password. We strongly recommend that you change the password right away.



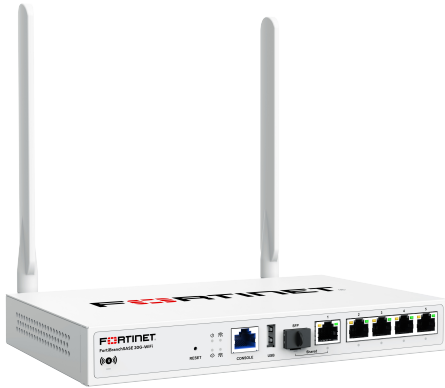


Installation

The FortiBranchSASE 20G series devices are designed to be placed on a desktop, or mounted on a wall using the provided Wall-Mounting Brackets.

Place on top of a desktop or flat surface

1. Attach the rubber feet to the four dents on the bottom of the unit.
2. Place the unit on a desktop or flat surface. (Note: The device in the following illustration is an FBS-20G-WiFi device.)





Mount on a wall

1. Attach the WiFi Antennas to the unit. (FBS-20G-WiFi only)
2. Use the four small screws to fasten the Wall-Mounting Brackets to the bottom of the unit.
3. Use the unit with the Wall-Mounting Brackets as reference to mark the locations on the wall.
4. Drill holes and insert the anchors into the holes.
5. Insert the screws through the two mounting holes on the Wall-Mounting Brackets into the anchors on the wall and tighten. (Note: The device in the following illustration is an FBS-20G-WiFi device.)





Cautions and Warnings

Environmental specifications

Ambient operating temperature: 0°C to 40°C.

Refer to specific Product Model Data Sheet for Environmental Specifications (Operating Temperature, Storage Temperature, Humidity, and Altitude).

Référez à la Fiche Technique de ce produit pour les caractéristiques environnementales (Température de fonctionnement, température de stockage, humidité et l'altitude).

Safety

This product is intended to be supplied by a Listed pluggable A via Class I external power supply adapter by means of a power cord connected to a socket-outlet with earthing connection. A Class II external power adapter with PS2/LPS output is provided.

Ce produit est destiné à être alimenté par un adaptateur d'alimentation externe de classe I par l'intermédiaire d'un cordon d'alimentation enfichable de classe A qui doit être branché à une prise de courant avec terre.

Grounding — To prevent damage to your equipment, connections that enter from outside the building should pass through a lightning /surge protector, and be properly grounded. Use an electrostatic discharge workstation (ESD) and/or wear an anti-static wrist strap while you work. In addition to the grounding terminal of the plug, on the back panel, there is another, separate terminal for earthing.

Mise à la terre — Pour éviter d'endommager votre matériel, assurez-vous que les branchements qui entrent à partir de l'extérieur du bâtiment passent par un parafoudre / parasurtenseur et sont correctement mis à la terre. Utilisez un poste de travail de décharge électrostatique (ESD) et / ou portez un bracelet anti-statique lorsque vous travaillez. Ce produit possède une borne de mise à la terre qui est prévu à l'arrière du produit, à ceci s'ajoute la mise à la terre de la prise.

This product has a separate protective earthing terminal provided on the back of the product in addition to the grounding terminal of the attachment plug. This separate protective earthing terminal must be permanently connected to earth with a green with yellow stripe conductor minimum size # 22AWG and the connection is to be installed by a qualified service personnel.

Ce produit a une borne de mise à la terre séparé sur le dos de l'appareil, en plus de la borne de mise à la terre de la fiche de raccordement. Cette borne de mise à la terre séparée doit être connecté en permanence à la terre avec un conducteur vert avec la taille bande jaune de minimum # 22AWG et la connexion doit être installé par un personnel qualifié.





Regulatory Notices

Federal Communication Commission (FCC) – USA

This device complies with Part 15 of FCC Rules. Operation is subject to the following two conditions:

- (1) this device may not cause harmful interference, and
- (2) this device must accept any interference received; including interference that may cause undesired operation.

This equipment has been tested and found to comply with the limits for a Class B digital device, pursuant to Part 15 of the FCC Rules. These limits are designed to provide reasonable protection against harmful interference in residential installation. This equipment generates, uses, and can radiate radio frequency energy, and if it is not installed and used in accordance with the instruction manual, it may cause harmful interference to radio communications. However, there is no guarantee that interference will not occur in a particular installation.

If this equipment does cause harmful interference to radio or television reception, which can be determined by turning the equipment off and on, the user is encouraged to try to correct the interference by one or more of the following measures:

- Reorient or relocate the receiving antenna.
- Increase the separation between the equipment and receiver.
- Connect the equipment into an outlet on a circuit different from that to which the receiver is connected.

Consult the dealer or an experienced radio/TV technician for help.

WARNING: Any changes or modifications to this unit not expressly approved by the party responsible for compliance could void the user's authority to operate the equipment.

This equipment complies with FCC radiation exposure limits set forth for an uncontrolled environment. This equipment should be installed and operated with minimum distance 20 cm between the radiator and your body. This transmitter must not be co-located or operating in conjunction with any other antenna or transmitter.

Caution: Operation of this device is restricted to indoor use only.

For operation within 5.15 – 5.25GHz frequency range, it is restricted to indoor environment.

This device meets all the other requirements specified in Part 15E, Section 15.407 of the FCC Rules.

Innovation, Science and Economic Development (ISED) – Canada

This Class B digital apparatus complies with Canadian ICES-003.

Cet appareil numérique de la classe B est conforme à la norme NMB-003 du Canada.

This device contains licence-exempt transmitter(s)/receiver(s) that comply with Innovation, Science and Economic Development Canada's licence-exempt RSS(s). Operation is subject to the following two conditions:

1. This device may not cause interference.
2. This device must accept any interference, including interference that may cause undesired operation of the device.

L'émetteur/récepteur exempt de licence contenu dans le présent appareil est conforme aux CNR d'Innovation, Sciences et Développement économique Canada applicables aux appareils radio exempts de licence. L'exploitation est autorisée aux deux conditions suivantes:

1. L'appareil ne doit pas produire de brouillage;
2. L'appareil doit accepter tout brouillage radioélectrique subi, même si le brouillage est susceptible d'en compromettre le fonctionnement.

This equipment complies with ISED radiation exposure limits set forth for an uncontrolled environment. This equipment should be installed and operated with minimum distance 20 cm between the radiator & your body.

Cet équipement est conforme aux limites d'exposition aux rayonnements ISED établies pour un environnement non contrôlé. Cet équipement doit être installé et utilisé avec un minimum de 20 cm de distance entre la source de rayonnement et votre corps.

Caution: The device for the band 5150-5250 MHz is only for indoor usage to reduce potential for harmful interference to co-channel mobile satellite systems.

Attention: Le dispositif de la bande 5150-5250 MHz est réservé à un usage intérieur afin de réduire l'interférence nuisible potentielle aux systèmes mobiles par satellite co-canal.

The maximum antenna gain permitted for devices in the bands 5250-5350 MHz and 5470-5725 MHz shall comply with the e.i.r.p. limit; and the maximum antenna gain permitted for devices in the band 5725-5825 MHz shall comply with the e.i.r.p. limits specified for point-to-point and non point-to-point operation as appropriate.

Le gain maximal d'antenne permis pour les dispositifs utilisant les bandes 5250-5350 MHz et 5470-5725 MHz doit se conformer à la limite de p.i.r.e.;

The worst-case tilt angle(s) necessary to remain compliant with the e.i.r.p. elevation mask requirement set forth in Section 6.2.2(3) shall be clearly indicated.

Les pires angles d'inclinaison nécessaires pour rester conforme à l'exigence de la p.i.r.e. applicable au masque d'élevation, et énoncé à la section 6.2.2 3), doivent être clairement indiqués.

Caution: The maximum antenna gain permitted for devices in the bands 5250-5350 MHz and 5470-5725 MHz shall comply with the e.i.r.p. limit; and the maximum antenna gain permitted for devices in the band 5725-5825 MHz shall comply with the e.i.r.p. limits specified for point-to-point and non point-to-point operation as appropriate.

Attention: Le gain maximal d'antenne permis pour les dispositifs utilisant les bandes 5250-5350 MHz et 5470-5725 MHz doit se conformer à la limite de p.i.r.e.; le gain maximal d'antenne permis (pour les dispositifs utilisant la bande 5725-5825 MHz) doit se conformer à la limite de p.i.r.e. spécifiée pour l'exploitation point à point et non point à point, selon le cas.





This radio transmitter has been approved by ISED to operate with the antenna types listed below with the maximum permissible gain and required antenna impedance for each antenna type indicated. Antenna types not included in this list, having a gain greater than the maximum gain indicated for that type, are strictly prohibited for use with this device.

Le présent émetteur radio a été approuvé par ISED pour fonctionner avec les types d'antenne énumérés ci-dessous et ayant un gain admissible maximal et l'impédance requise pour chaque type d'antenne. Les types d'antenne non inclus dans cette liste, ou dont le gain est supérieur au gain maximal indiqué, sont strictement interdits pour l'exploitation de l'émetteur.

This device and its antennas(s) must not be co-located or operating in conjunction with any other antenna or transmitter except in accordance with IC multi-transmitter product procedures.

Cet appareil et son antenne (s) ne doit pas être co-localisés ou fonctionner en association avec une autre antenne ou transmetteur.

Antenna #	Manufacturer	Model	Antenna Type	Connector	Antenna Gain
1	Dongguan RF Electronic Technology Co., Ltd.	U007025000H05272	PCB	IPEX	3.57 dBi for BLE
2	INFAQ Technology Co., Ltd.	RFDPA222005BLB801	External Omni	RP-SMA	3.31 dBi @ 2.4 GHz 4.84 dBi @ 5 GHz
3	INFAQ Technology Co., Ltd.	RFDPA222005BLB801	External Omni	RP-SMA	3.31 dBi @ 2.4 GHz 4.84 dBi @ 5 GHz

Note: FBS-20G has BLE with internal antenna. FBS-20G-WIFI has a BLE internal antenna and two Wi-Fi external antennas.

European Conformity (CE) – EU

This is a Class B product. In a domestic environment, this product may cause radio interference, in which case the user may be required to take adequate measures.



This equipment should be installed and operated with minimum distance 20 cm between the radiator and your body.

Simplified EU Declaration of Conformity

This declaration is only valid for Fortinet products (including, combinations of software, firmware and hardware) provided by Fortinet or Fortinet's authorized partners to the end customer directly for use within the EU or countries that have implemented the EU Directives and/or spectrum regulation. Any Fortinet products not obtained directly from Fortinet or Fortinet's authorized partners may not comply with EU Directives and Fortinet makes no assurances for such products.

Български

Този продукт е в съответствие с Директива 2014/53/ЕС.

Česky

Tento produkt je v souladu se směrnicí 2014/53/EU.

Dansk

Denne produkt er i overensstemmelse med direktiv 2014/53/EU.

Deutsch

Dieses Produkt entspricht der Richtlinie 2014/53/EU.

Eesti

See toode vastab direktiivile 2014/53/EU.

English

This product is in compliance with Directive 2014/53/EU.

Español

Este producto cumple con la Directiva 2014/53/EU.

Ελληνική

Το προϊόν αυτό συμμορφώνεται με την Οδηγία 2014/53/ΕΕ.

Français

Ce produit est conforme à la Directive 2014/53/EU.

Hrvatski

Ovaj proizvod je u skladu s Direktivom 2014/53/EU.

Italiano

Questo prodotto è conforme alla Direttiva 2014/53/EU.

Latviski

Šis produkts atbilst Direktīvai 2014/53/EU.

Lietuvių

Šis gaminytis atitinka direktyvą 2014/53/ES.

Malti

Dan il-prodott huwa konformi mad-Direttiva 2014/53/EU.

Magyar

Ez za termék megfelel a 2014/53/EU irányelvnek.

Nederlands

Dit product is in overeenstemming met Richtlijn 2014/53/EU.

Norsk

Denne produktet er i samsvar med direktiv 2014/53/EU.

Polski

Ten produkt jest zgodny z dyrektywą 2014/53/UE.

Português

Este produto está em conformidade com a Diretiva 2014/53/UE.

Rumunski

Acest produs este în conformitate cu Directiva 2014/53/UE.

Slovensky

Tento produkt je v súlade so smernicou 2014/53/EÚ.

Slovenščina

Ta izdelek je v skladu z Direktivo 2014/53/EU.

Suomi

Tämä tuote on direktiivin 2014/53/EU mukainen.

Svenska

Denna produkt överensstämmer med direktiv 2014/53/EU.

Note: The full declaration of conformity for this product is available at the link below:

<https://site.fortinet.com/ProductRegulatory/EU>



The product transmits within the frequency ranges and less than or equal to the power listed below:

2402–2480 MHz less than 20 dBm
2412–2472 MHz less than 20 dBm
5150–5250 MHz less than 23 dBm
5250–5350 MHz less than 23 dBm *
5470–5725 MHz less than 30 dBm *
5725–5850 MHz less than 14 dBm

Note:

- * Only with DFS bands certification.
- * FBS-20G has BLE, FBS-20G-WiFi has BLE and Wi-Fi radios.

The device is restricted to indoor use only when operating in the 5150 to 5350 MHz frequency range in the following countries:

	AT	BE	BG	HR	CY	CZ	DK
	EE	FI	FR	DE	EL	HU	IE
	IT	LV	LT	LU	MT	NL	PL
	PT	RO	SK	SI	ES	SE	

The product transmits within the frequency ranges and less than or equal to the power listed below:

2402–2480 MHz less than 20 dBm
2412–2472 MHz less than 20 dBm
5150–5250 MHz less than 23 dBm
5250–5350 MHz less than 23 dBm*
5470–5725 MHz less than 30 dBm*
5725–5850 MHz less than 14 dBm

Note:

- * Only with DFS bands certification.
- * FBS-20G has BLE, FBS-20G-WiFi has BLE and Wi-Fi radios

This equipment should be installed and operated with minimum distance 20 cm between the radiator & your body.

This product is in compliance with Statutory Instrument 1206 Radio Equipment Regulations 2017.

The full Declaration of Conformity for this product is available in the link below:

<https://site.fortinet.com/ProductRegulatory/UK>

The device is restricted to indoor use only when operating in the 5150 to 5350 MHz frequency range in the following countries:

	UK (NI)
---	---------

Voluntary Control Council for Interference (VCCI) – Japan

この装置は、クラスB情報技術装置です。この装置は、家庭環境で使用することを目的としていますが、この装置がラジオやテレビジョン受信機に近接して使用されると、

信障害を引き起こすことがあります。

取扱説明書に従って正しい取り扱いをして下さい。

VCCI – B

Product Safety Electrical Appliance & Material (PSE) – Japan

日本では電気用品安全法(PSE)の規定により、同梱している電源コードは本製品の専用電源コードとして利用し、他の製品に使用しないでください。

China

警告: 在居住环境中, 运行此设备可能会造成无线电干扰。

Bureau of Standards Metrology and Inspection (BSMI) – Taiwan

The presence conditions of the restricted substance (BSMI RoHS table) are available at the link below:
限用物質含有情況表 (RoHS Table) 請到以下 網址下載:
<https://www.fortinet.com/bsmi>

警告: 為避免電磁干擾, 本產品不應安裝或使用於住宅環境。

請仔細閱讀以下說明

本設備勿置於潮濕處。

連接至電源前, 請先檢查電壓。

當設備不用時, 請將所有電源線拔除, 避免電壓不穩而造成傷害。

勿將任何液體灑入設備中, 避免線路短路。

基於安全理由, 只有受到專業訓練的從業人員, 才可以打開本設備。

請勿自行調整或修理已通電的設備, 以確保您的安全。如不小心受傷, 請立刻找急救人員給予您適當的救護, 千萬別因傷勢輕微而忽略自己的傷勢。

英商蓋麥群島商防特網股份有限公司台灣分公司

地址: 台北市內湖區行愛路176號2樓

電話: (02) 27961666



National Telecommunications Commission (NCC) – Taiwan

取得審驗證明之低功率射頻器材，非經核准，公司、商號或使用者均不得擅自變更頻率、加大功率或變更原設計之特性及功能。低功率射頻器材之使用不得影響飛航安全及干擾合法通信；經發現有干擾現象時，應立即停用，並改善至無干擾時方得繼續使用。前述合法通信，指依電信管理法規定作業之無線電通信。低功率射頻器材須忍受合法通信或工業、科學及醫療用電波輻射性電機設備之干擾。

1. 使用此產品時應避免影響附近雷達系統之操作。
2. 高增益指向性天線只得應用於固定式點對點系統。

電磁波曝露量MPE標準值 $1\text{mW}/\text{cm}^2$ ，送測產品實測值為：
 $0.58\text{ mW}/\text{cm}^2$ ，建議使用時至少距人體 20 cm 。

For Product License Agreement/EULA and Warranty Terms, visit

<https://www.fortinet.com/content/dam/fortinet/assets/legal/EULA.pdf>







Fortinet Customer Service & Support

Create a support account, register and manage your products, download updates, firmware images and release notes, and create technical support tickets.

<https://support.fortinet.com>

Fortinet Document Library

Up-to-date versions of Fortinet publications for the entire family of Fortinet products.

<http://docs.fortinet.com>

Training Services

Course descriptions, availability, schedules, and location of training programs in your area.

<http://www.fortinet.com/training>

Technical Discussion Forums

Communicate with other customers and Fortinet partners about Fortinet products, services, and configuration issues.

<https://support.fortinet.com/forum>

FortiGuard Threat Research and Response

Up-to-date information on vulnerabilities and threats, includes a virus scanner, IP signature look-up, and web filtering tools.

<http://www.fortiguard.com>

Fortinet.com

