



緯創

FG-4800F

ARY196-0047-011-00

025.9027V.0001

Engineer :Roy

Report date : 2022/08/08



Location of antenna



Total Cable length:580mm

Antenna Specification

ANT	
Item	Specification
Operating Frequency(MHz)	2400-2500
Bandwidth	100MHz (Min.)
Return Loss	8dB (Min.)
Polarization	Linear
Azimuth Bandwidth	Omni-directional
Peak Gain	-0.27 dBi (Max)
Impedance	50Ω
Material	FPC
Maximum Power	1W
V.S.W.R	2.3 : 1
Radiation	Omni directional
Efficiency	>20%
Connector	MMCX
Cable type	OD 1.37 LL
Operating Temperature	-10~60°C
Storage temp	-10~70°C

Antenna Measurement Vector Network Analyzer

Test Environment and Equipments

S-Parameter test

Testing range from 300KHz to 20GHz

Network Analyzer(Agilent-N5230A)



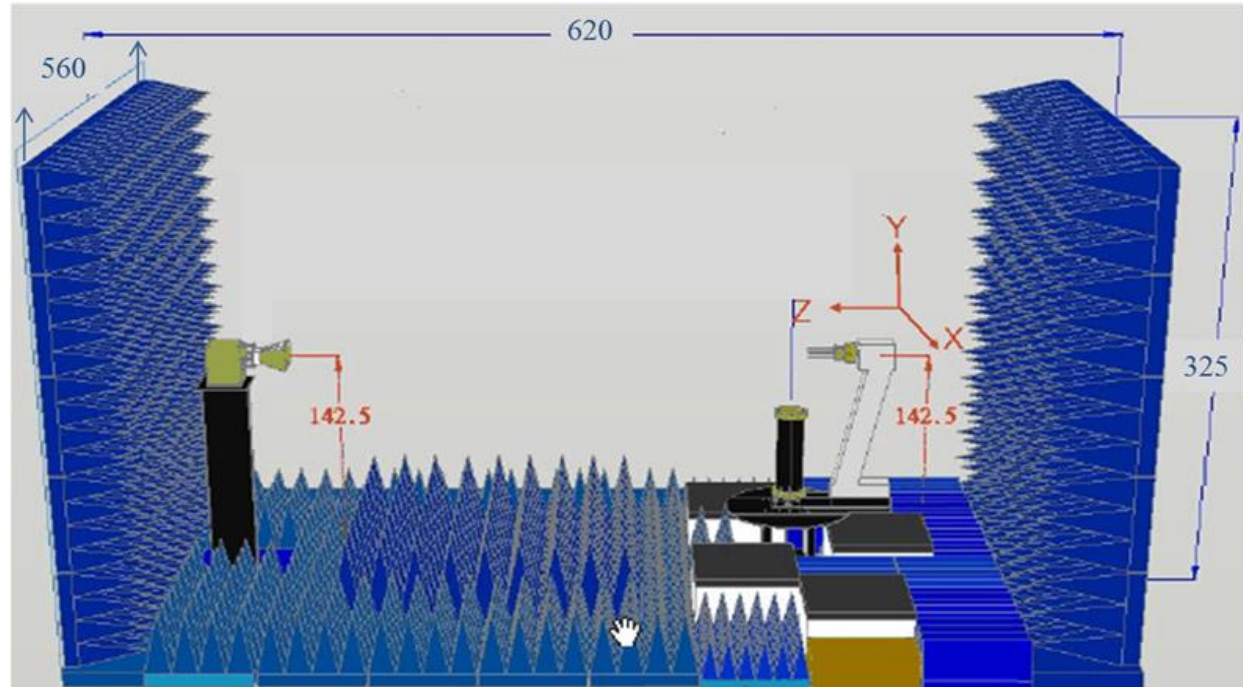
Return Loss



Frequency (MHz)	2400	2450	2500
S11(dB)	-8.4	-12.3	-8.1

Test Environment and Equipments

Test setup

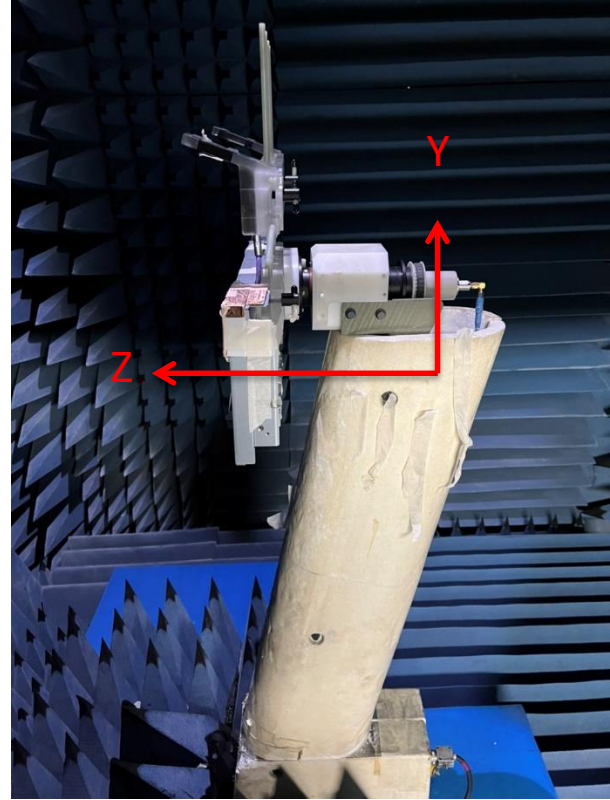
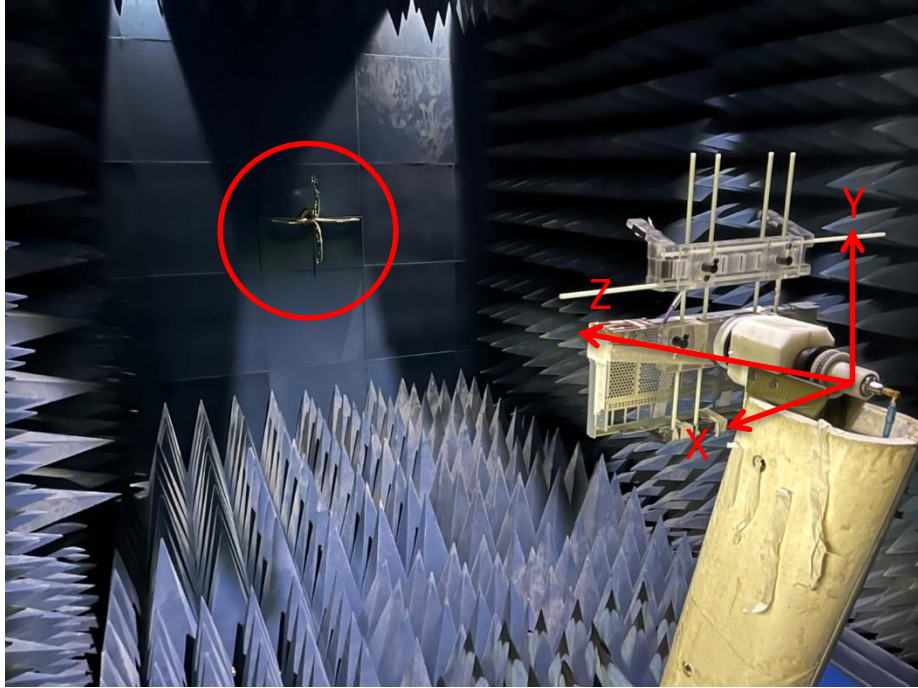


Test Environment and Equipments

Equipment list

Device	Ttype/Model	Serial#	Manufacturer	Cal. Date	Cal. Due Date
Anechoic Chamber	FFC-600L	FFC-600L-285	wavepro	30-Apr-22	30-Apr-23
Network Analyzer	N5230A	MY45000163	Agilent Technologies	11-May-21	11-May-23
Turntable	NSI-SC-5606-3DZ	011	NSI-MI	N/A	N/A
Measurement SW	NSI 2000	SOM-SM-2000-V4	NSI-MI	N/A	N/A
Dual Polarization Vivaldi Antenna 0.6~8GHz	-	-	WavePro Inc.	30-Oct-20	30-Oct-23
Computer Monitor	HS-CM145	0410006420	CCTVINDIA	30-Aug-20	30-Aug-23
Industrial PC	IPC-610BP		Advantech Co., Ltd	30-Aug-20	30-Aug-23
Standard Beam Controller (SBC)	NSI-RF-5918	070	NSI-MI	30-Oct-20	30-Oct-23
Antenna Range Controller (ARC)	NSI-SC-5911-4	0335	NSI-MI	30-Oct-20	30-Oct-23
RF Cable 240in 22GHz	UFA210C-1-2400-300300	MFR 64639 207908-005	Carlisle Interconnect Tech.	30-Aug-20	30-Aug-23
RF Cable 240in 22GHz	UFA210C-1-2400-300300	MFR 64639 209026-013	Carlisle Interconnect Tech.	30-Aug-20	30-Aug-23
RF Cable 60cm 26.5GHz	EC-A5-60-1678	Z0066	E-INSTRUMENT TECH LTD.	30-Aug-20	30-Aug-23

Chamber Measurement Photo



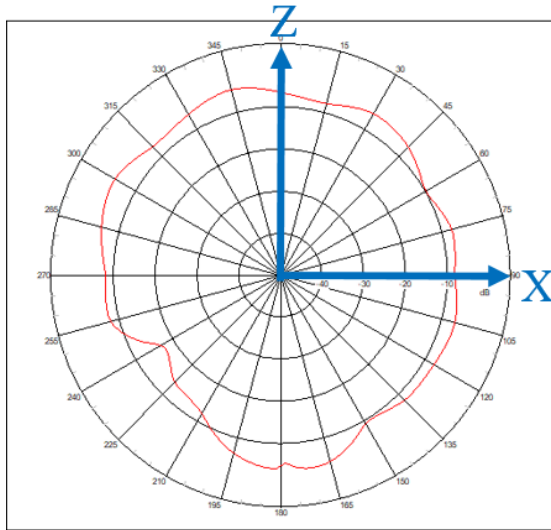
3D Gain Total

Ant 1			
Frequency (GHz)	Peak Gain (dBi)	3D-avg Gain (dBi)	Efficiency (%)
2.4	-1.24	-6.85	21
2.41	-1.21	-6.56	22
2.42	-0.83	-6.03	25
2.43	-0.69	-5.78	26
2.44	-0.8	-5.7	27
2.45	-0.75	-6.09	25
2.46	-0.42	-6.23	24
2.47	-0.27	-6.36	23
2.48	-0.59	-6.88	21
2.49	-0.74	-7.08	20
2.5	-0.7	-7	20

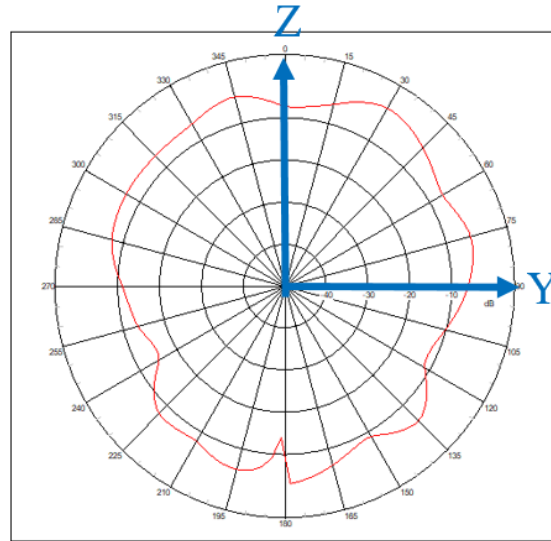
Antenna Pattern

2450MHz

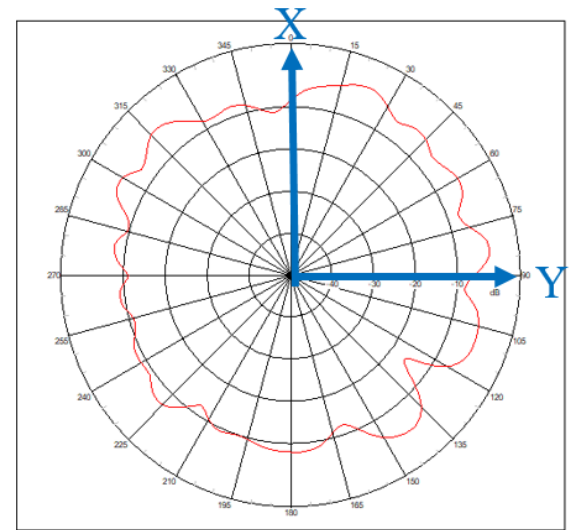
ZX-plane



YZ-plane



XY-plane





創造完美連結

MAKING THE PERFECT CONNECTION

www.wieson.com