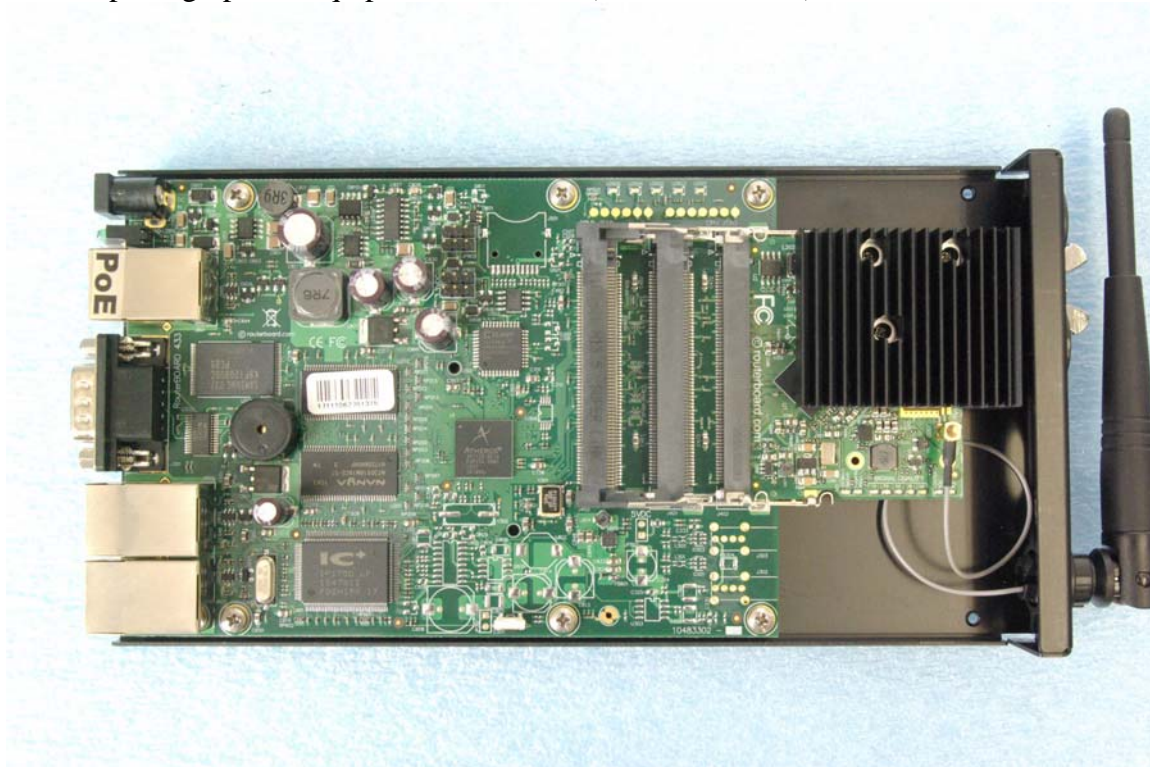


Internal photographs of equipment under test  
Internal photographs of equipment under test (inside enclosure)



Rogers Labs, Inc.  
4405 W. 259th Terrace  
Louisburg, KS 66053  
Phone/Fax: (913) 837-3214  
Revision 1

Mikrotiks SIA  
Model: R5SHPn  
Test #: 110826M  
Test to: CFR47 (15.247)  
File: IntPho R5SHPn

SN: 2B7301BF7D81  
FCC ID#: TV7R5SHPN  
Date: September 26, 2011  
Page 1 of 4

Bottom side of supporting circuit board



EUT PCB (heat sink in place)



Rogers Labs, Inc.  
4405 W. 259th Terrace  
Louisburg, KS 66053  
Phone/Fax: (913) 837-3214  
Revision 1

Mikrotik SIA  
Model: R5SHPn  
Test #: 110826M  
Test to: CFR47 (15.247)  
File: IntPho R5SHPn

SN: 2B7301BF7D81  
FCC ID#: TV7R5SHPN  
Date: September 26, 2011  
Page 2 of 4





Heat sink removed top side



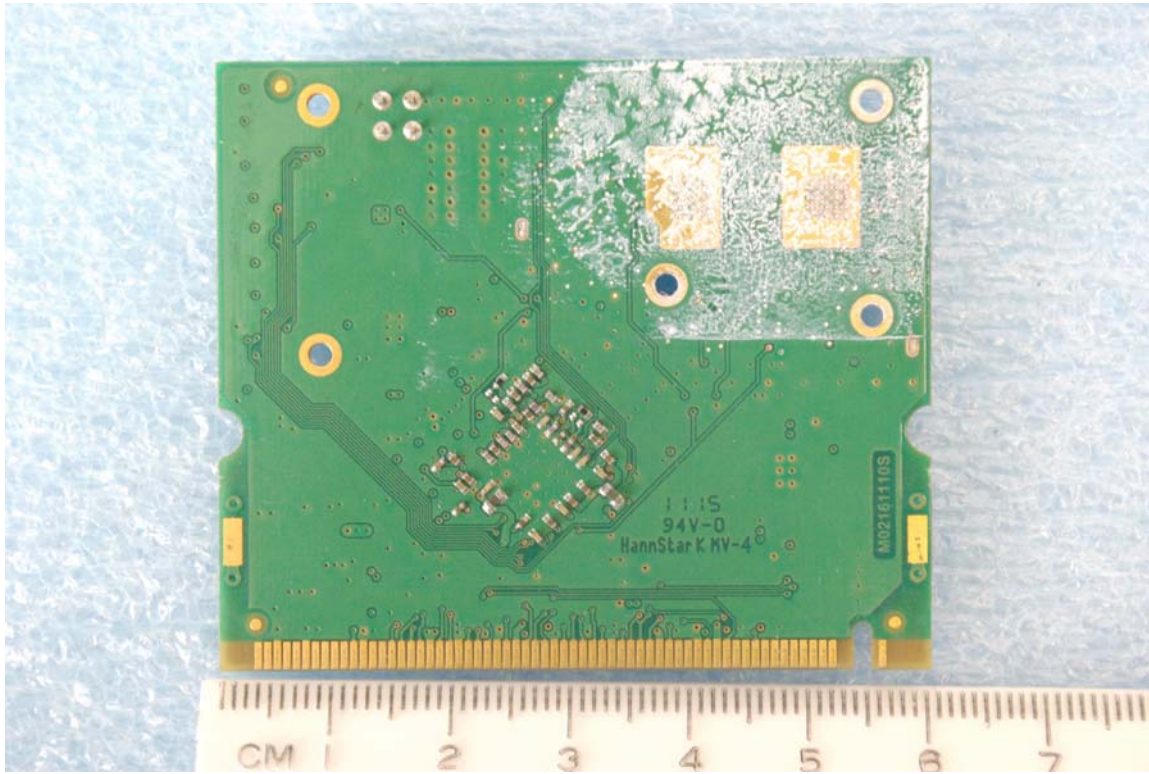
Rogers Labs, Inc.  
 4405 W. 259th Terrace  
 Louisburg, KS 66053  
 Phone/Fax: (913) 837-3214  
 Revision 1

Mikrotiks SIA  
 Model: R5SHPn  
 Test #: 110826M  
 Test to: CFR47 (15.247)  
 File: IntPho R5SHPn

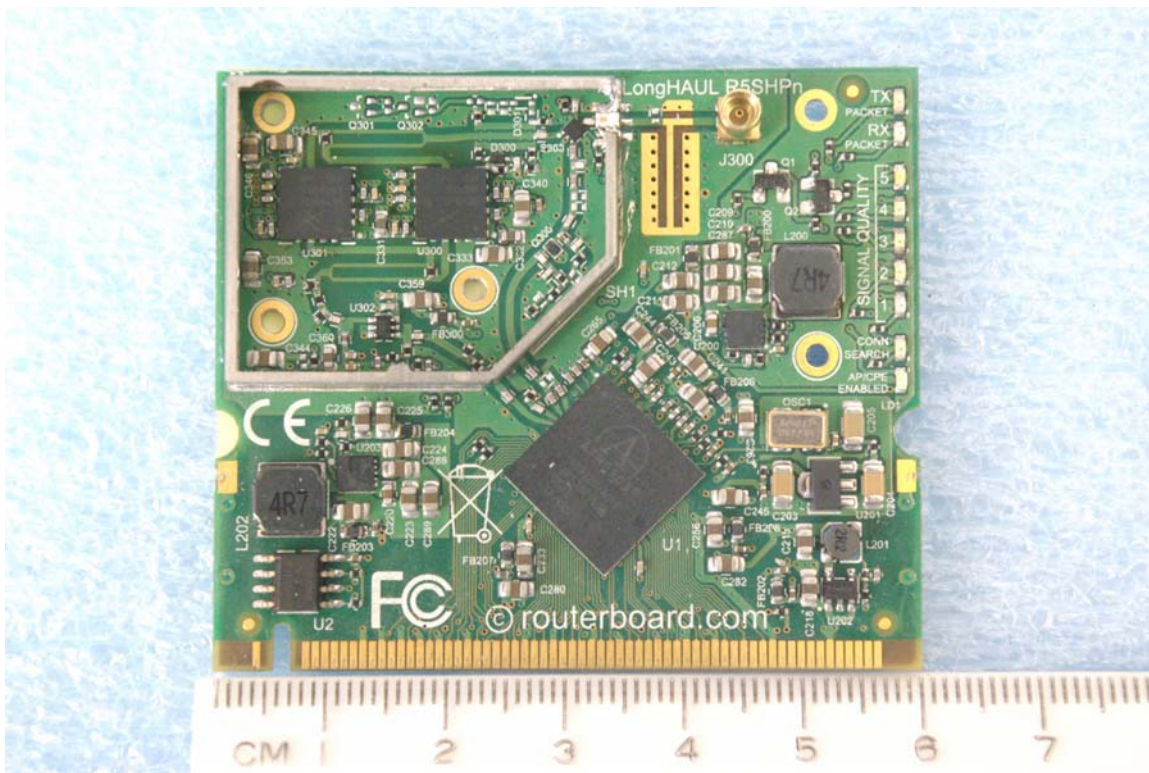
SN: 2B7301BF7D81  
 FCC ID#: TV7R5SHPN  
 Date: September 26, 2011  
 Page 3 of 4



Heat sink removed bottom side



Shield removed for photograph



Rogers Labs, Inc.  
4405 W. 259th Terrace  
Louisburg, KS 66053  
Phone/Fax: (913) 837-3214  
Revision 1

Mikrotiks SIA  
Model: R5SHPn  
Test #: 110826M  
Test to: CFR47 (15.247)  
File: IntPho R5SHPn

SN: 2B7301BF7D81  
FCC ID#: TV7R5SHPN  
Date: September 26, 2011  
Page 4 of 4