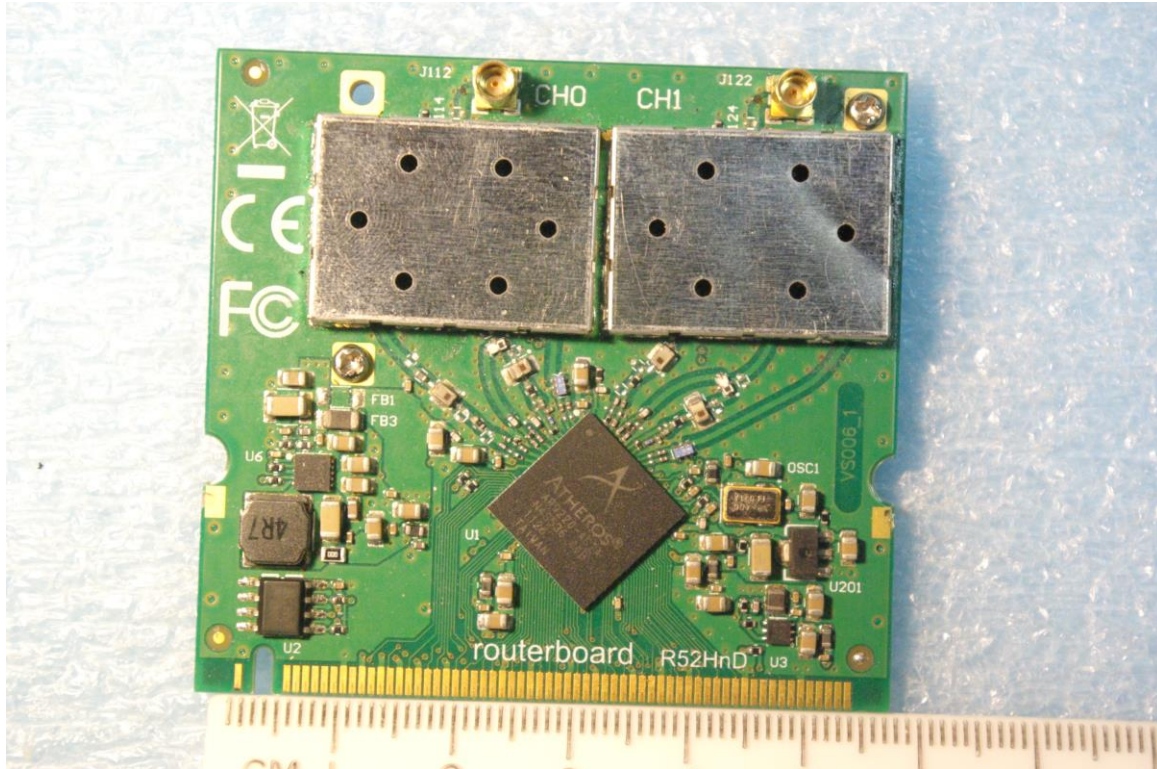


External photographs of equipment under test

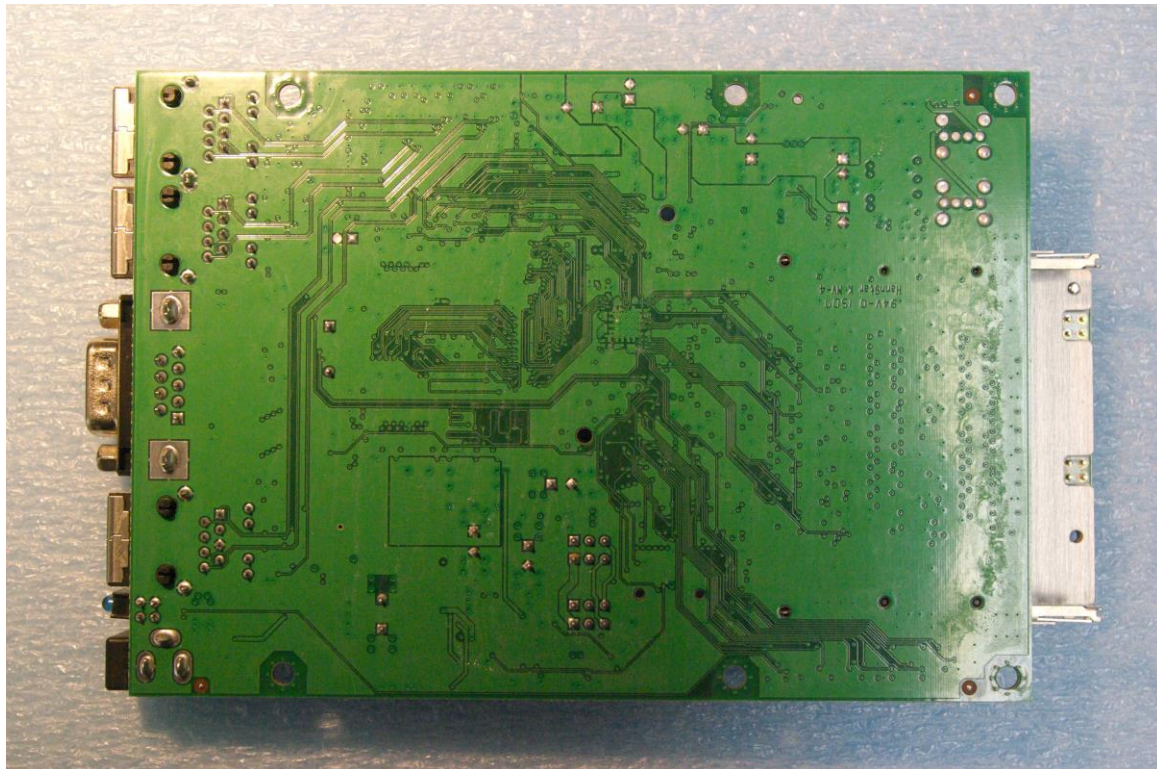
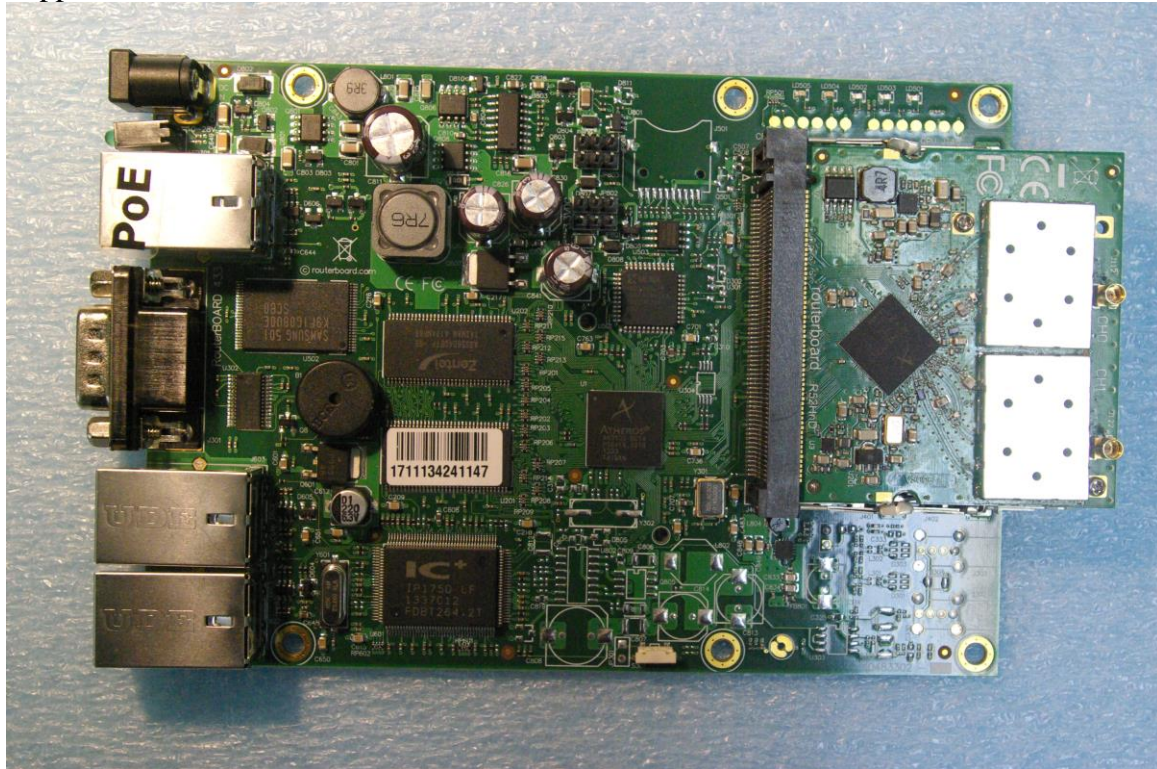


Rogers Labs, Inc.  
4405 W. 259th Terrace  
Louisburg, KS 66053  
Phone/Fax: (913) 837-3214  
Revision 1

Mikrotiks SIA  
Model: R52HnD  
Test #: 160720  
Test to: 47CFR, 15.247, 15.407, RSS-247  
File: R52HnD ExtPho

S/N: 26114  
FCC: TV7R52HND  
IC: 7442A-R52HND  
Date: August 24, 2016  
Page 1 of 3

Support interface board with EUT mounted

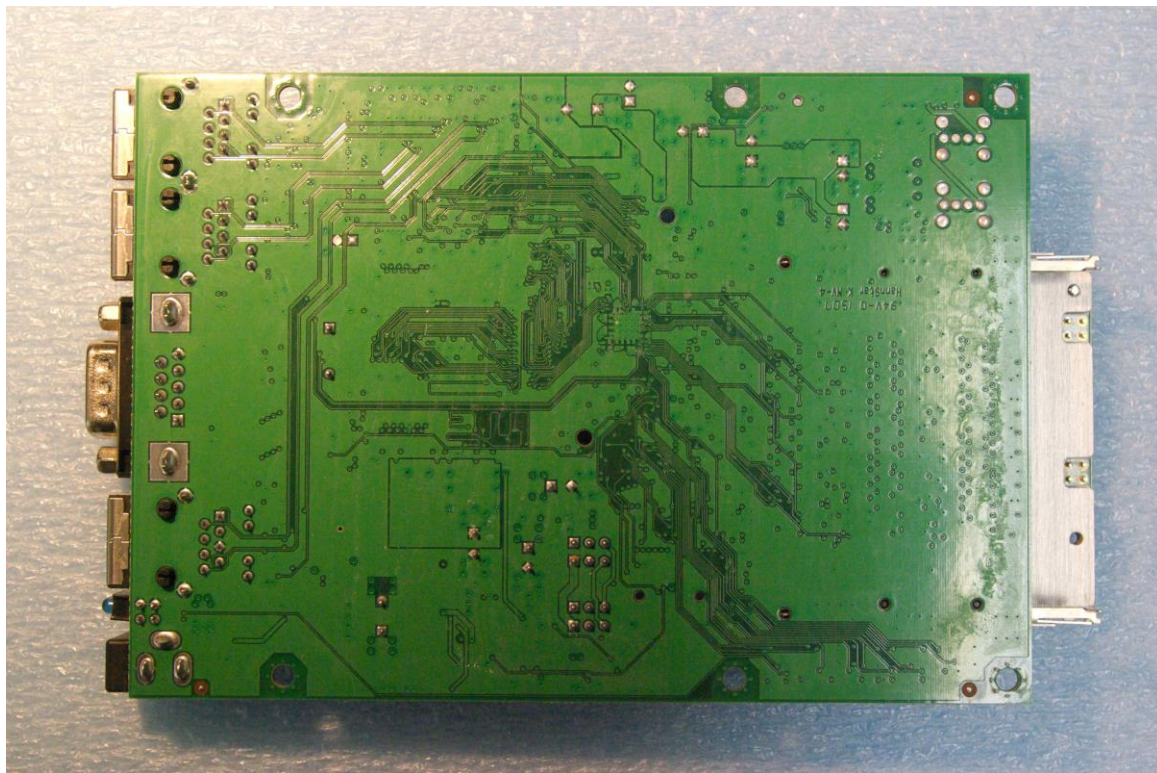
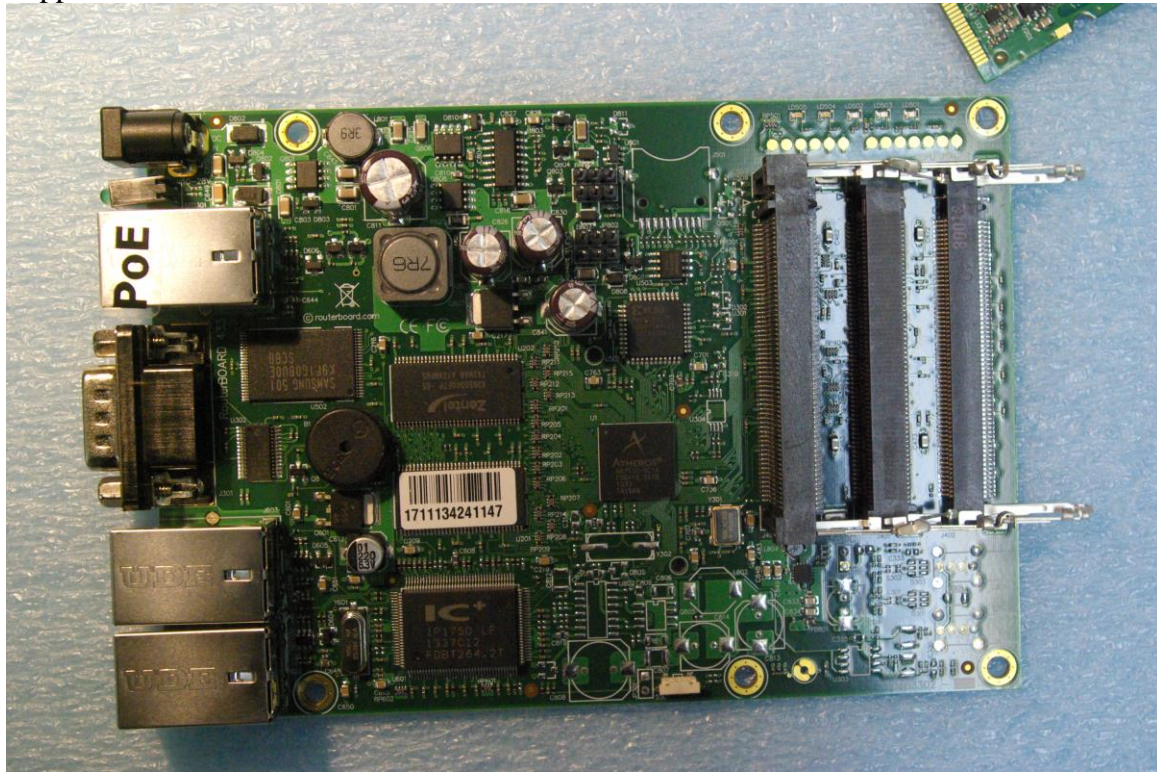


Rogers Labs, Inc.  
4405 W. 259th Terrace  
Louisburg, KS 66053  
Phone/Fax: (913) 837-3214  
Revision 1

Mikrotiks SIA  
Model: R52HnD  
Test #: 160720  
Test to: 47CFR, 15.247, 15.407, RSS-247  
File: R52HnD ExtPho

S/N: 26114  
FCC: TV7R52HND  
IC: 7442A-R52HND  
Date: August 24, 2016  
Page 2 of 3

Support interface board



Rogers Labs, Inc.  
4405 W. 259th Terrace  
Louisburg, KS 66053  
Phone/Fax: (913) 837-3214  
Revision 1

Mikrotiks SIA  
Model: R52HnD  
Test #: 160720  
Test to: 47CFR, 15.247, 15.407, RSS-247  
File: R52HnD ExtPho

S/N: 26114  
FCC: TV7R52HND  
IC: 7442A-R52HND  
Date: August 24, 2016  
Page 3 of 3