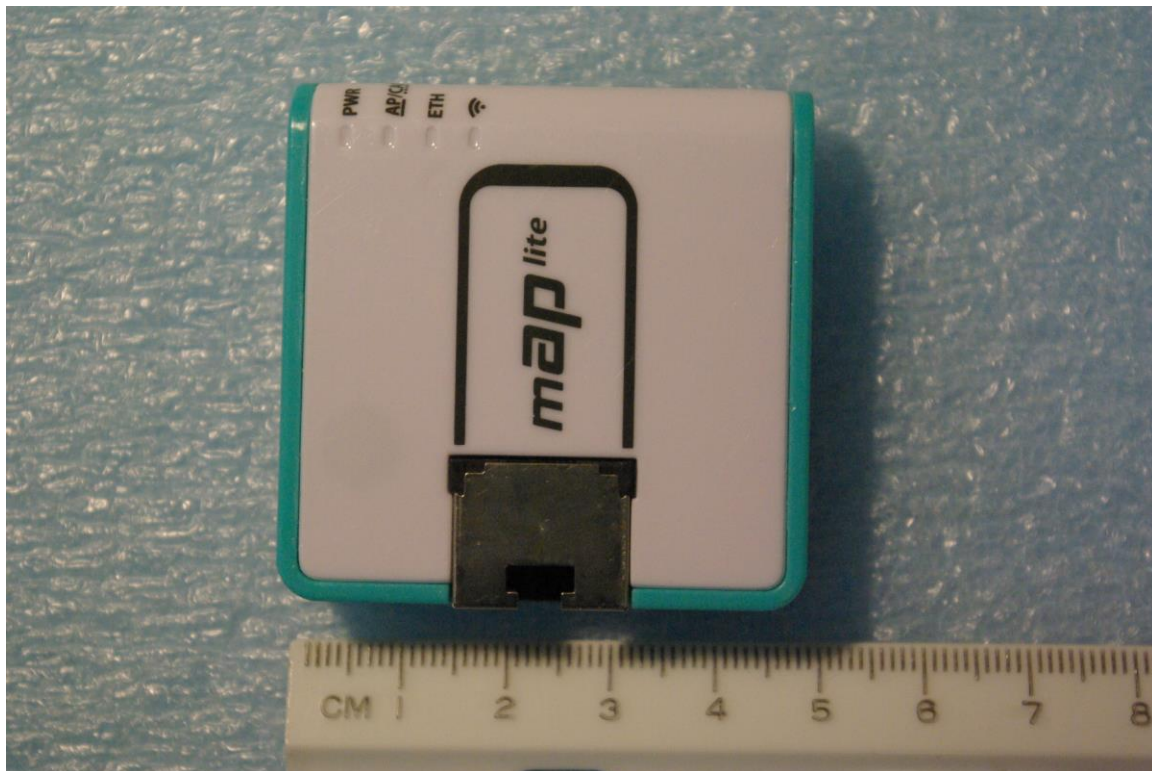
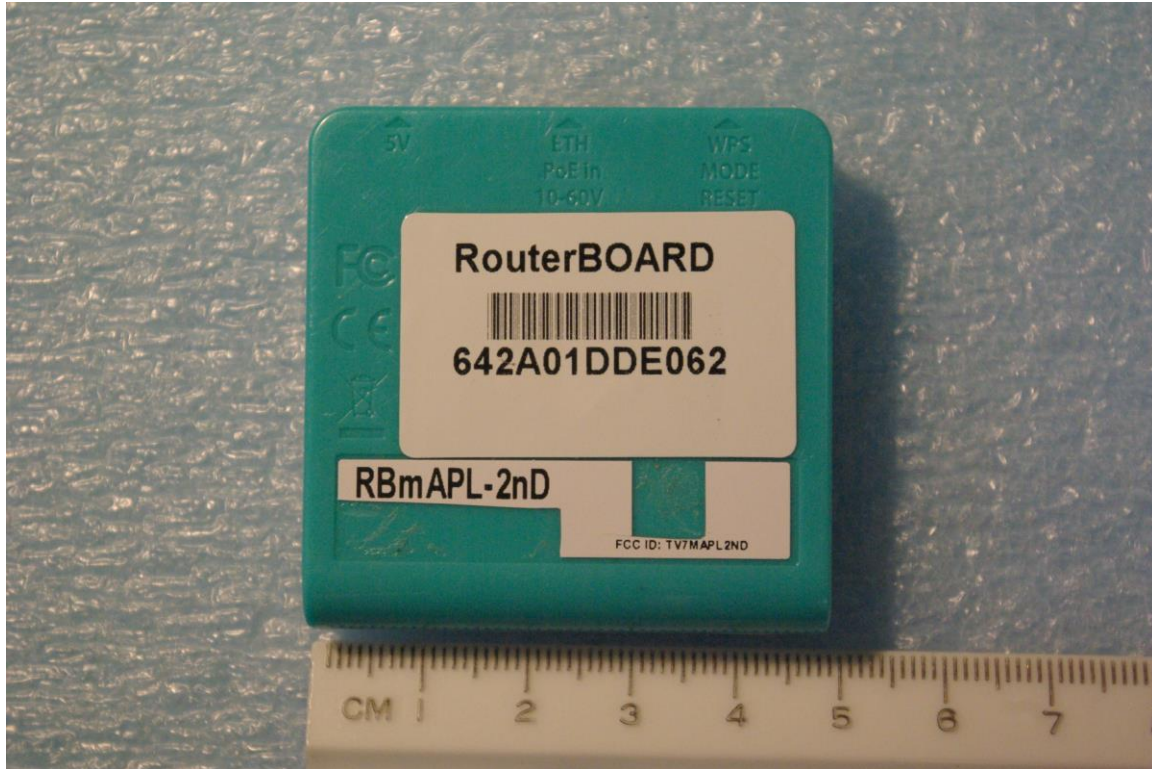


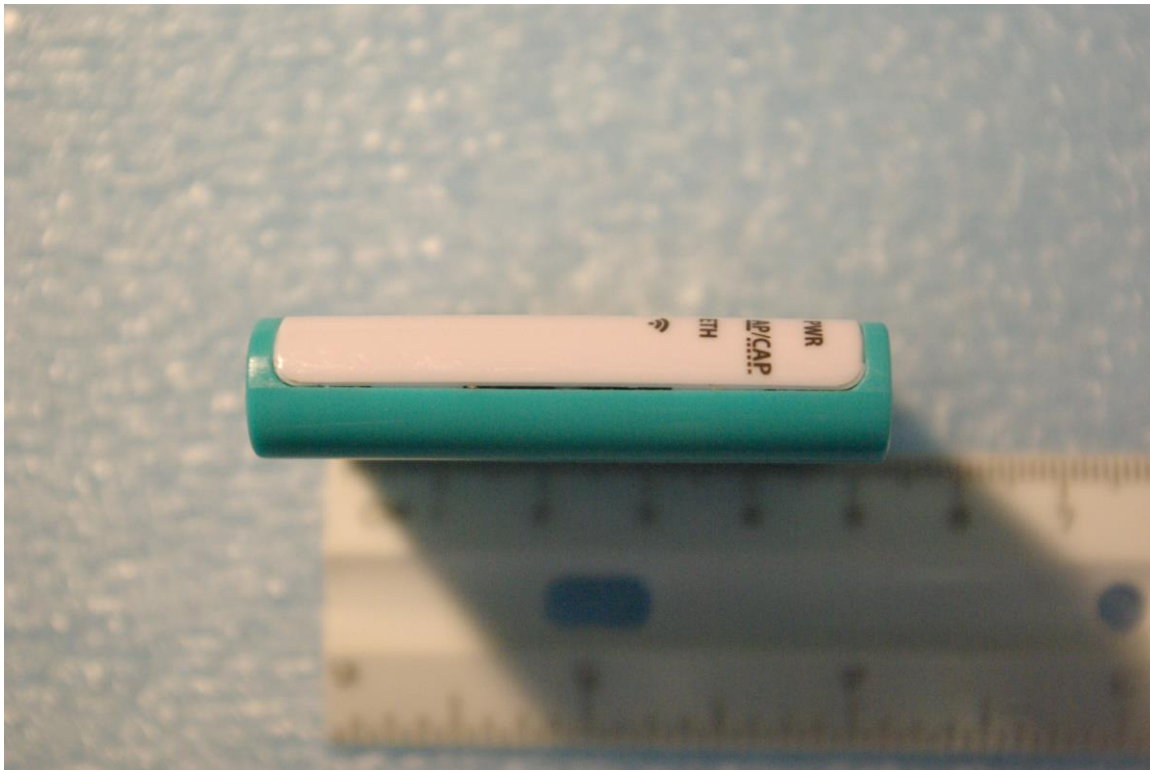
External photographs of equipment under test



Rogers Labs, Inc.
4405 W. 259th Terrace
Louisburg, KS 66053
Phone/Fax: (913) 837-3214
Revision 1

Mikrotiks SIA
Model: RBmAP L-2nD
Test #: 150730A-151104
Test to: 47CFR 15.247, RSS-247
File: RBmAPL2nD ExtPho

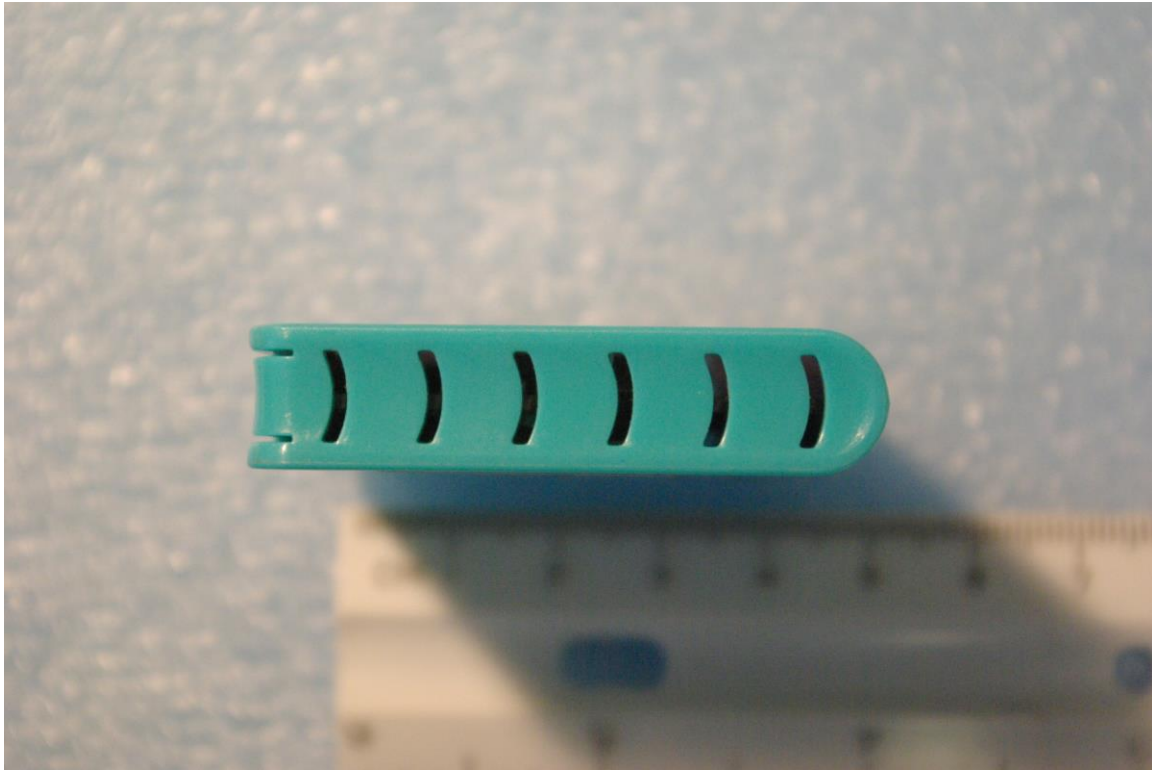
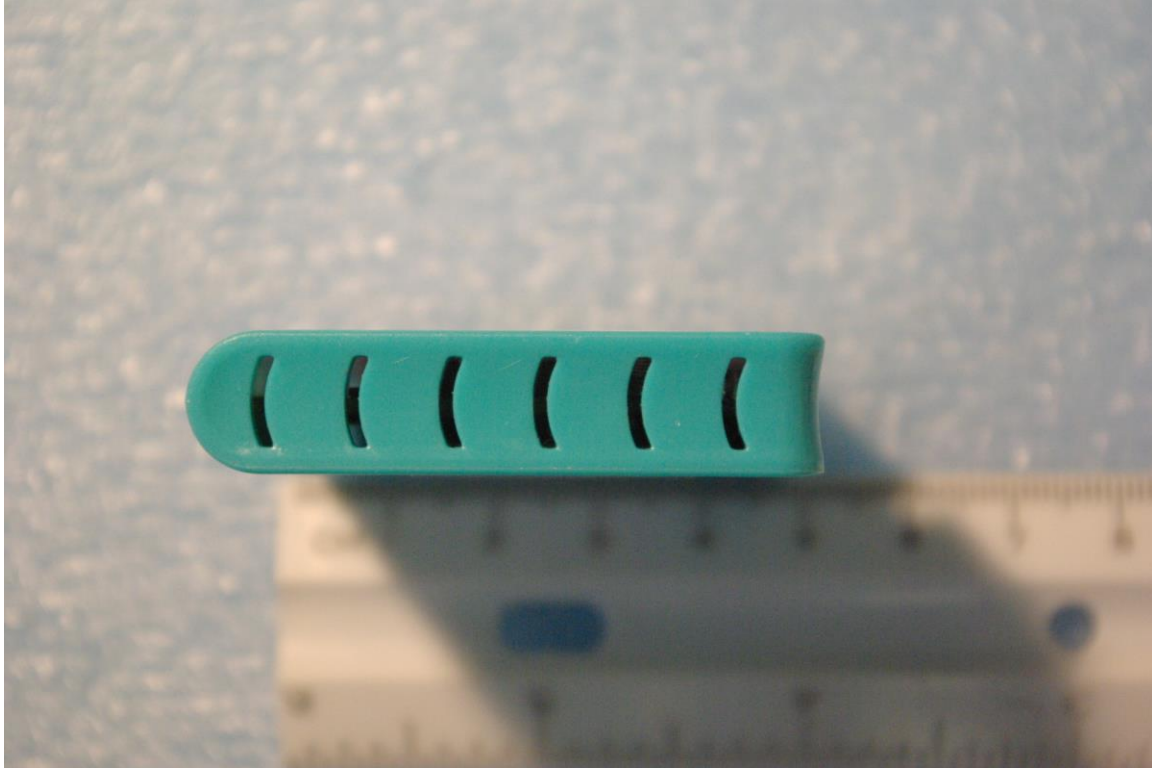
S/N: 642A01DDE062
FCC ID#: TV7MAPL2ND
IC: 7442A-MAPL2ND
Date: December 20, 2015
Page 1 of 4



Rogers Labs, Inc.
4405 W. 259th Terrace
Louisburg, KS 66053
Phone/Fax: (913) 837-3214
Revision 1

Mikrotiks SIA
Model: RBmAP L-2nD
Test #: 150730A-151104
Test to: 47CFR 15.247, RSS-247
File: RBmAPL2nD ExtPho

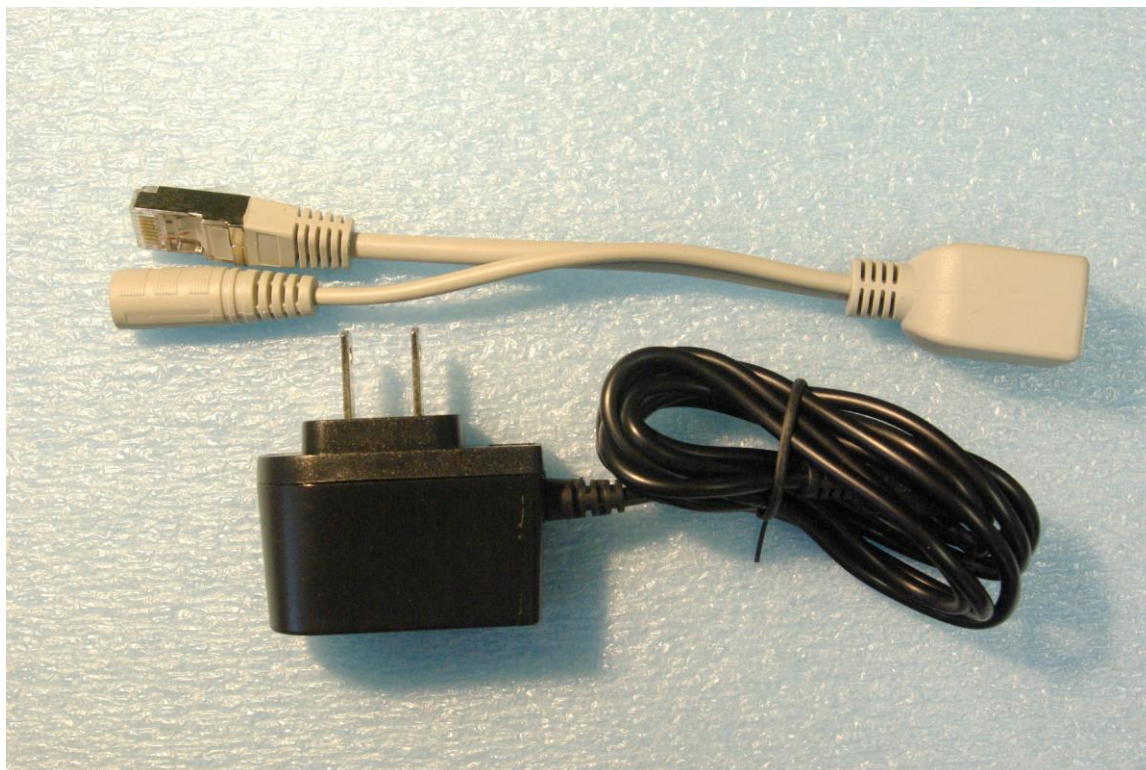
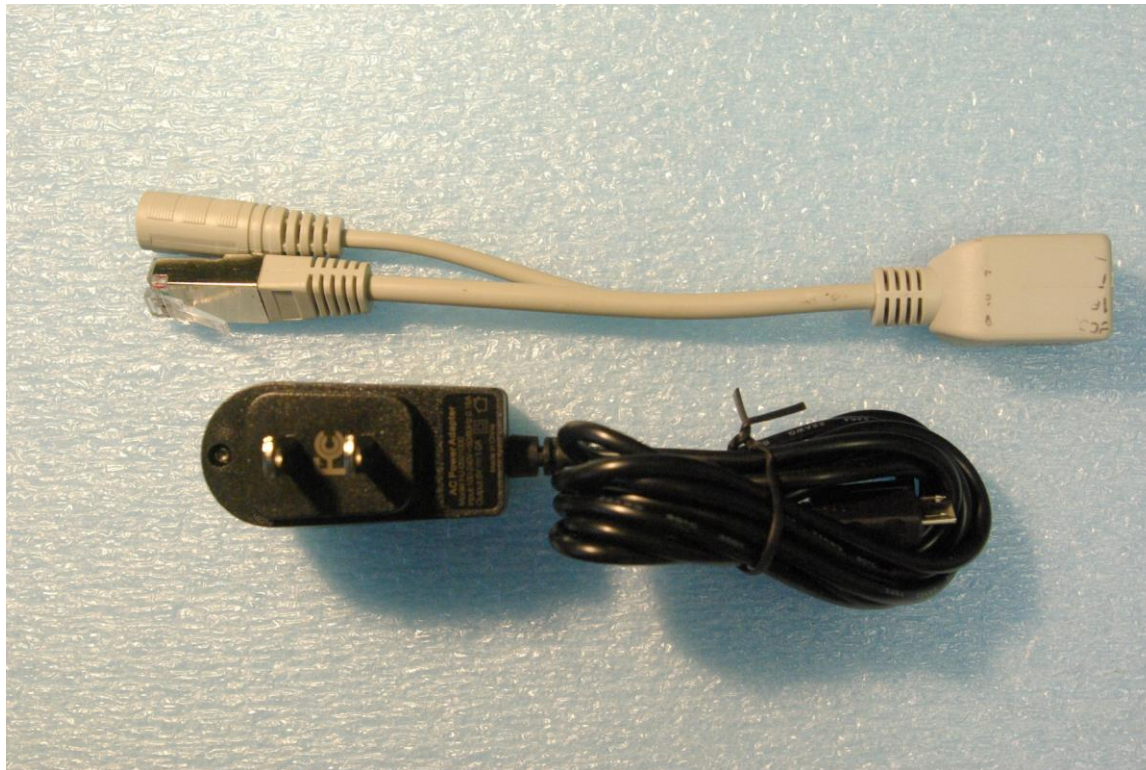
S/N: 642A01DDE062
FCC ID#: TV7MAPL2ND
IC: 7442A-MAPL2ND
Date: December 20, 2015
Page 2 of 4



Rogers Labs, Inc.
4405 W. 259th Terrace
Louisburg, KS 66053
Phone/Fax: (913) 837-3214
Revision 1

Mikrotiks SIA
Model: RBmAP L-2nD
Test #: 150730A-151104
Test to: 47CFR 15.247, RSS-247
File: RBmAPL2nD ExtPho

S/N: 642A01DDE062
FCC ID#: TV7MAPL2ND
IC: 7442A-MAPL2ND
Date: December 20, 2015
Page 3 of 4



Rogers Labs, Inc.
4405 W. 259th Terrace
Louisburg, KS 66053
Phone/Fax: (913) 837-3214
Revision 1

Mikrotiks SIA
Model: RBmAP L-2nD
Test #: 150730A-151104
Test to: 47CFR 15.247, RSS-247
File: RBmAPL2nD ExtPho

S/N: 642A01DDE062
FCC ID#: TV7MAPL2ND
IC: 7442A-MAPL2ND
Date: December 20, 2015
Page 4 of 4