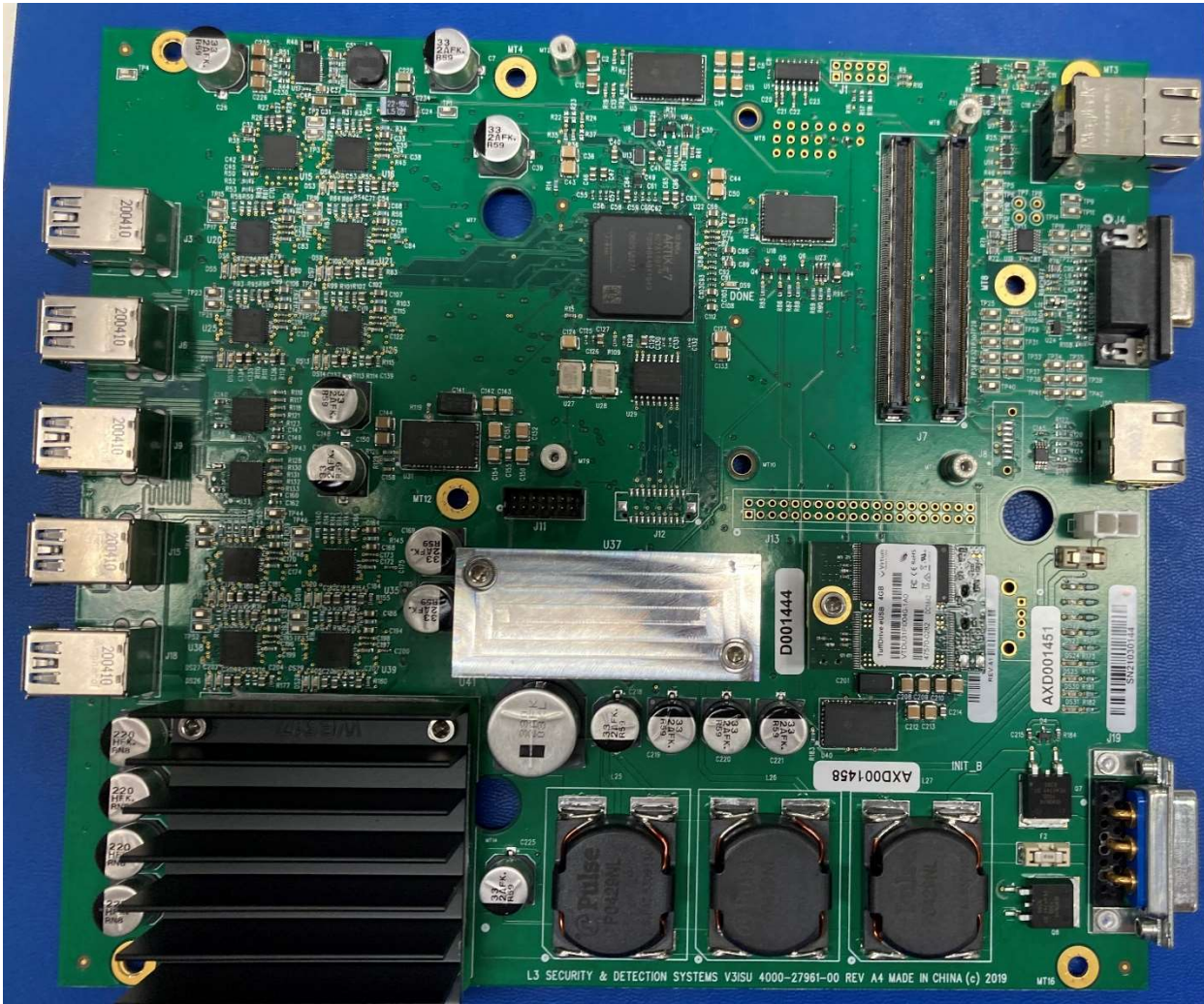


1) Image Sampling Control Electronics (V3ISU) top view

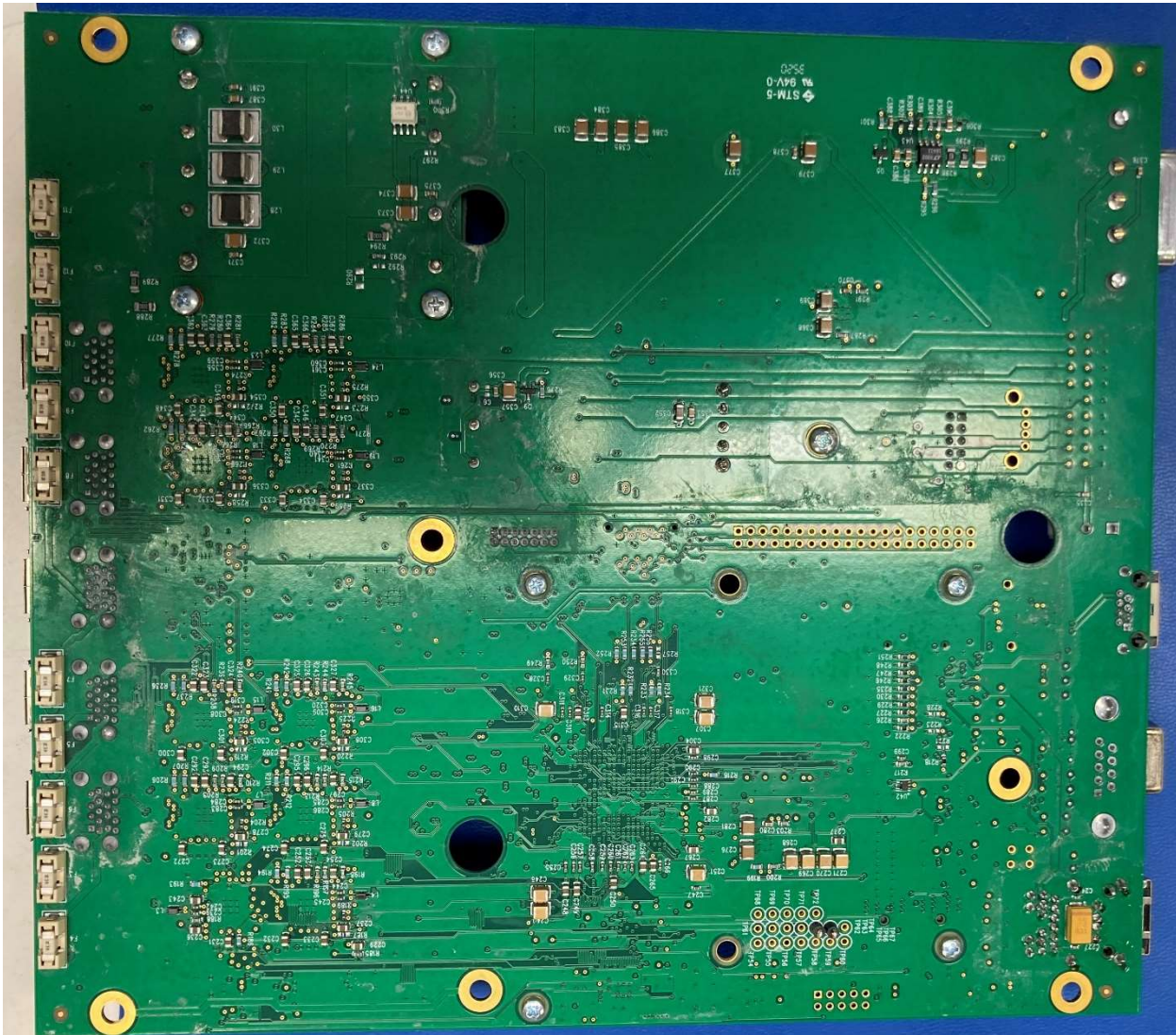


2) Image Sampling Control Electronics (V3ISU) side view 1





3) Image Sampling Control Electronics (V3ISU) back side



4) Image Sampling Control Electronics (V3ISU) view 2



5) Image Sampling Control Electronics (V3ISU) in chassis

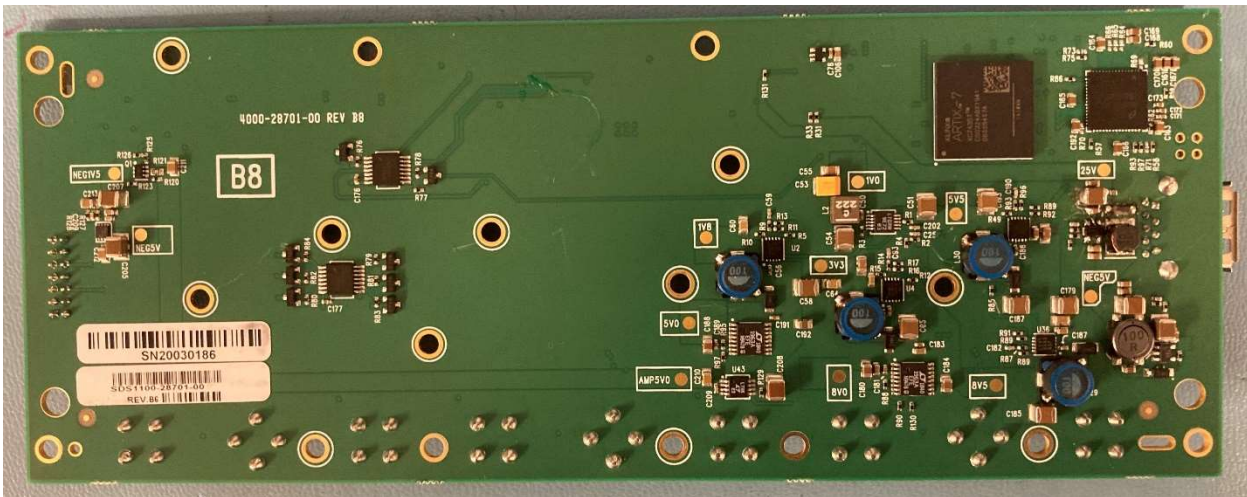




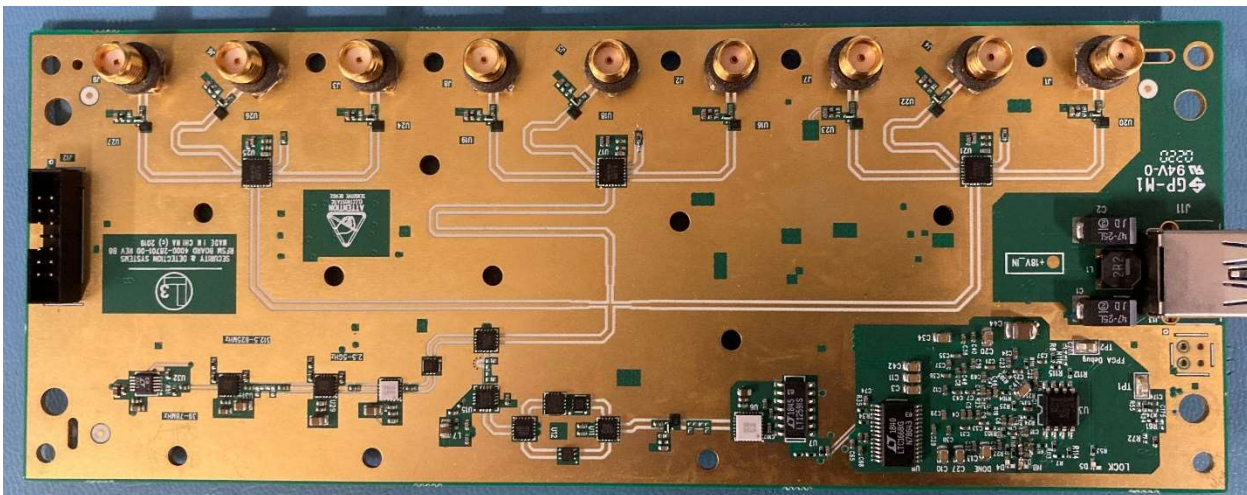
6) Image Sampling Control Electronics (V3ISU) Front view



7) RFSM PCB

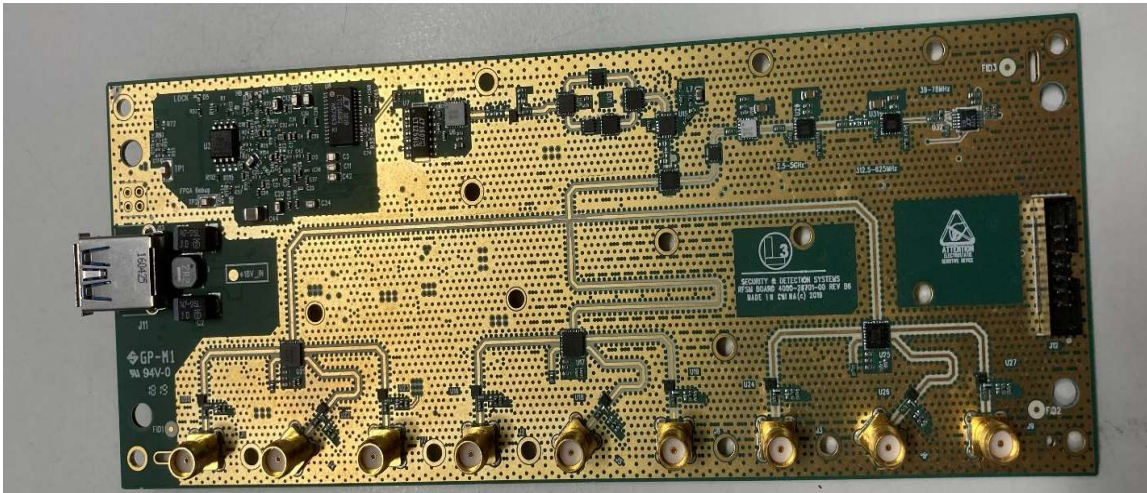


8) RFSM PCB other side





9) RFSM PCB



10) RFSM SIDE VIEW

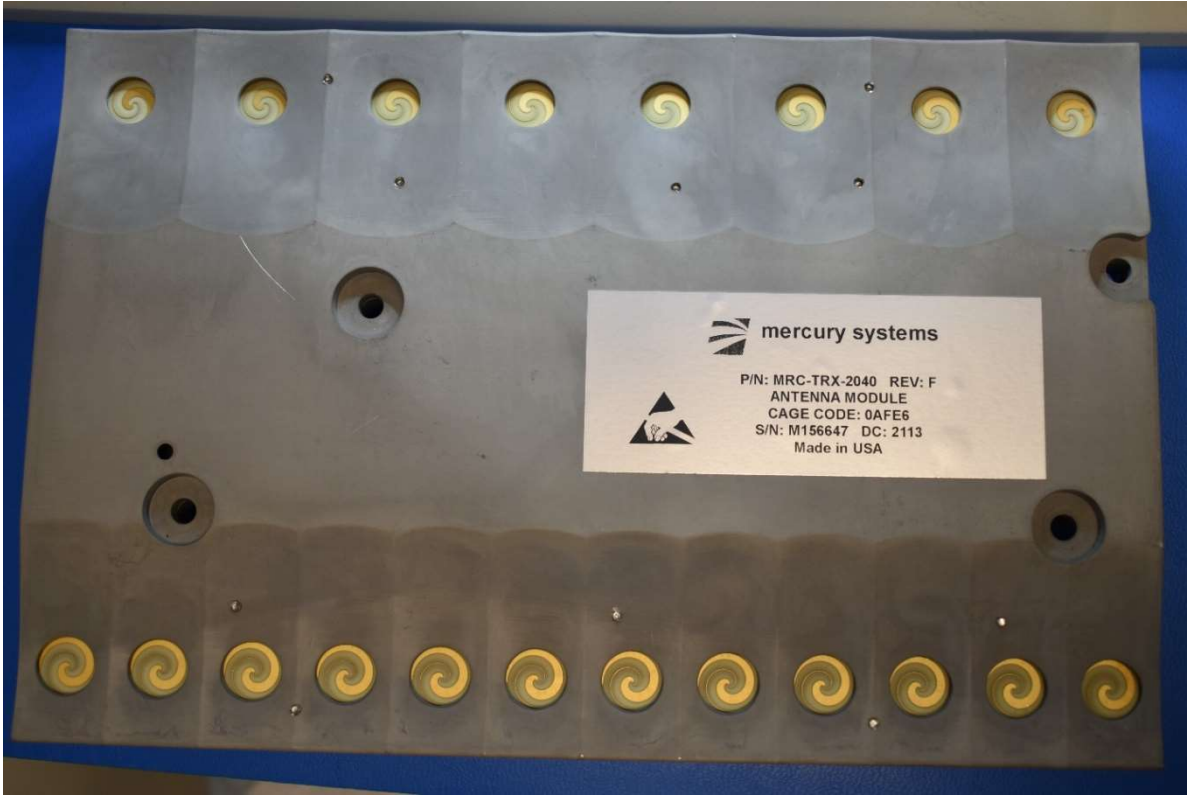


11) RFSM Top view

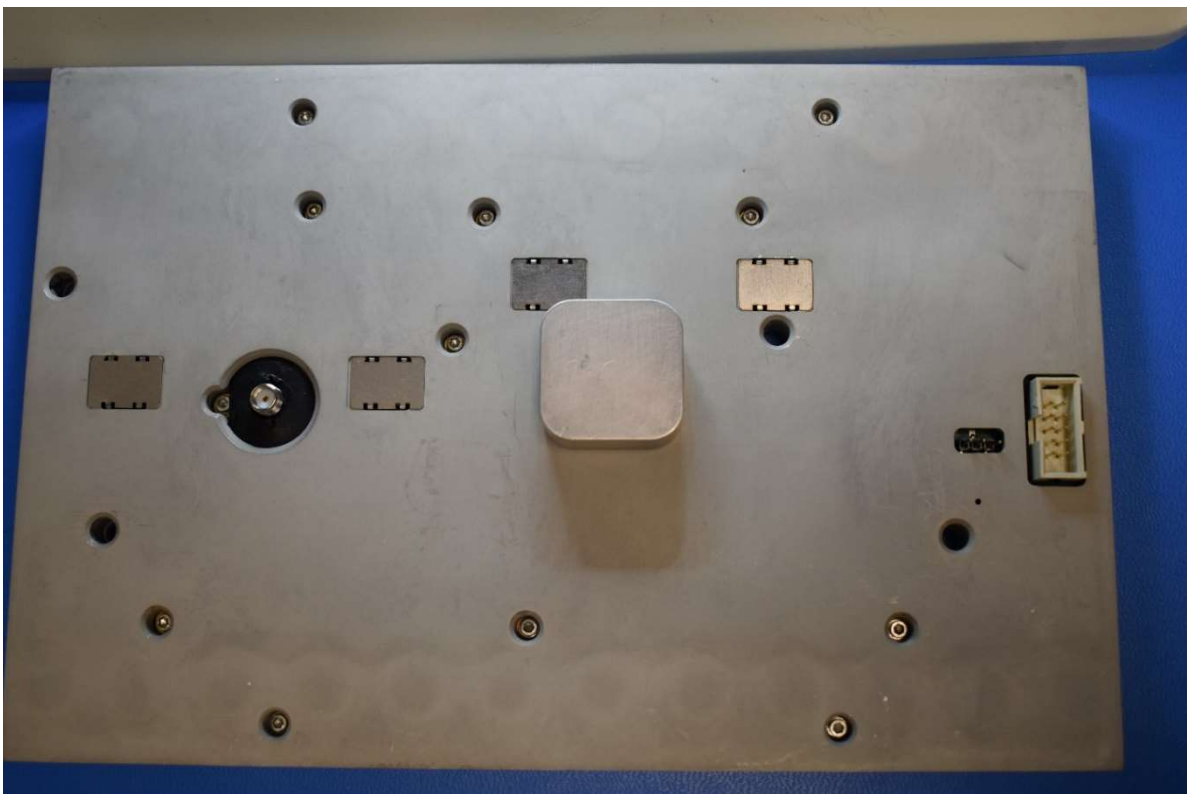




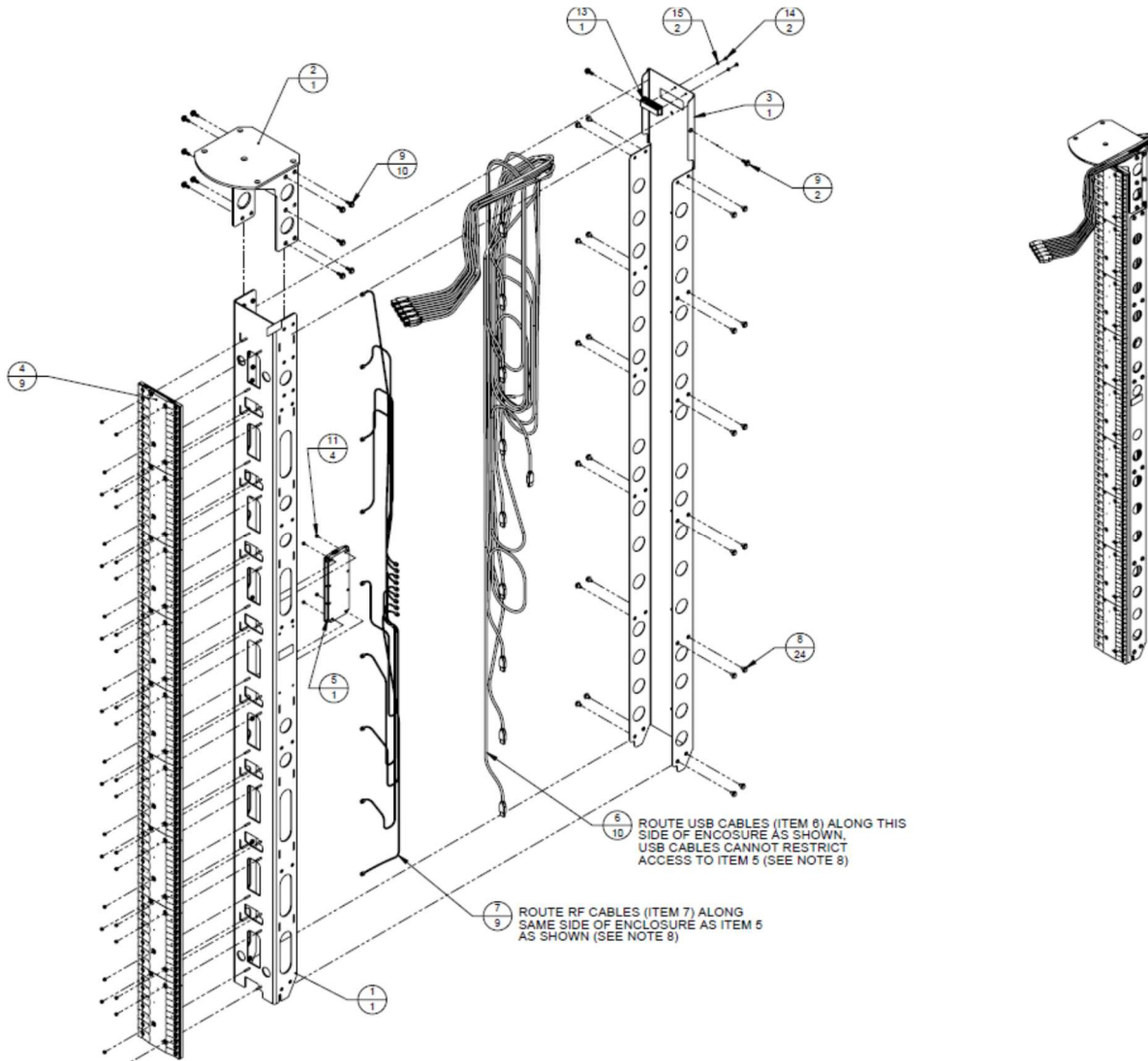
12) Antenna Module Assembly (additional photos are included in Operational Description)



13) Antenna Module Assembly - Back View



14) Antenna Module Mast Assembly







### 15) Advanced Scan Control Computer (ASCU)

- Install Intel S3520 SSD into Slot 1
- Load L3 CFI image onto this SSD



Install Advantech PCIe-2131 NIC into UM slot

- Install COM port here
- Cable to COM 1 connector on MB



6FA-00030  
WIN SVR EMB STD 2008 R2 1-4CPU 5CLT  
DEY SOFTWARE  
00168-274-663-364 X20-46737  
GD-369DQ-P8RRQ-9BPYR  
R-DDTR2-DXDQM-PFDPC-BT328

2000021854-21

# ADVANTECH

ADVANTECH Co.,Ltd. <http://www.advantech.com>  
製造商：研華股份有限公司(研華股份有限公司)  
生產商：研華科技(中國)有限公司

Computer 電腦(微型计算机)

Model No:  
型號(型号): AGS-913

Part No:  
料號(料号): AGS91311701-T

Input:  
輸入(输入): 100-120Vac,50/60Hz,12A;  
200-240Vac,50/60Hz,7A;

S/N:

Factory:C2  
Made In China 中國製造(中国制造)

This device complies with part 15 of the FCC rules. Operation is subject to the following two conditions:  
(1) This device may not cause harmful interference.  
(2) This device must accept any interference received, including interference that may cause undesired operation.

**CAUTION!!**  
To prevent shock. Do not remove cover. No user serviceable parts inside. Refer servicing to qualified personnel.

**ATTENTION!!**  
Pour éviter les chocs. Ne pas retirer le couvercle. Aucune pièce réparable par l'utilisateur. Pour l'entretien, adressez-vous aux personnes qualifiées, s.v.p.  
注意!! 产品避免撞击。勿自行拆卸机壳。机台内部无客户可自行处理的部分。若有问题请咨询专业人员。  
警告使用者：這是甲類的資訊產品，在居住的環境中使用時，可能會造成射頻干擾，在這種情況下，使用者會被要求採取某些適當的對策。  
声明 此为A级产品，在生活环境中，该产品可能会造成无线电干扰，在这种情况下可能需要用户对干扰采取切实可行的措施。

CE 10

UL US LISTED E180881 I.T.E.



16) Motion control (Motor)

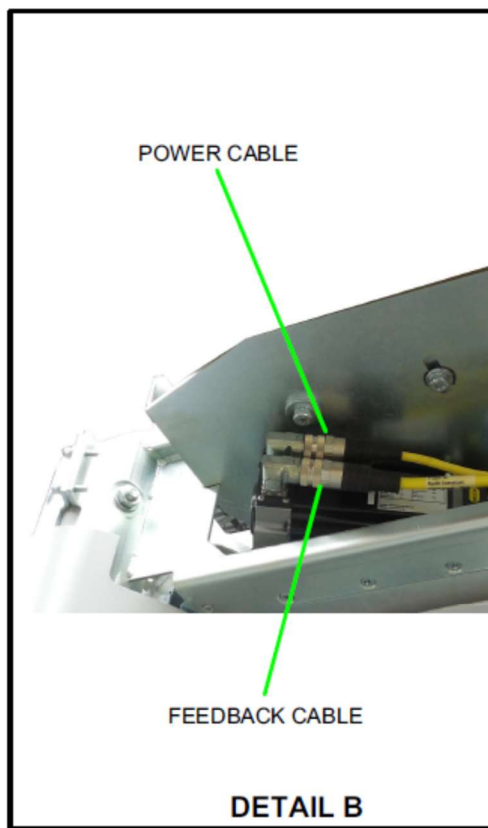
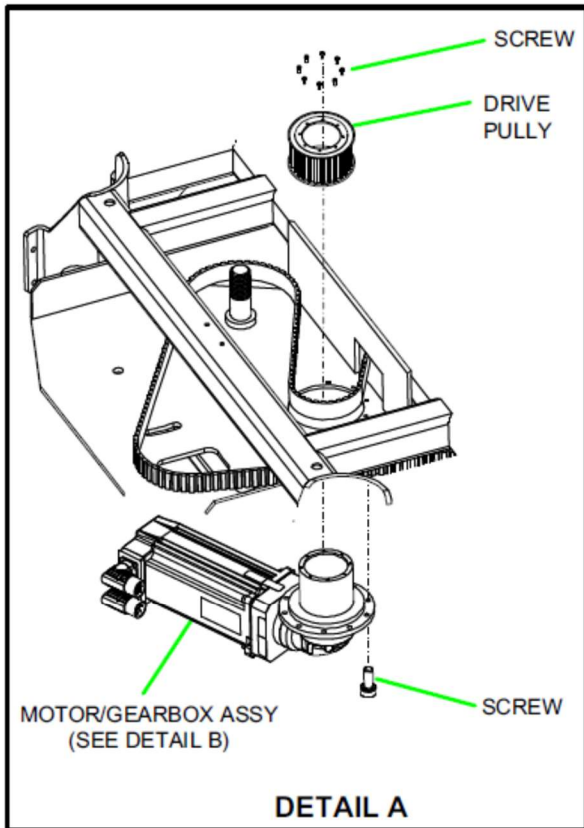
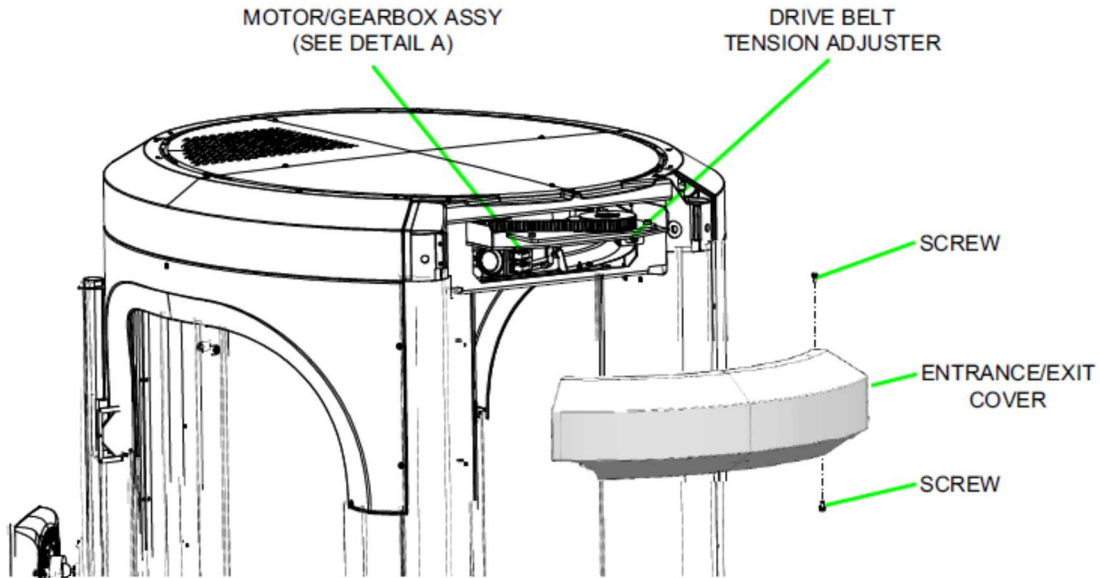
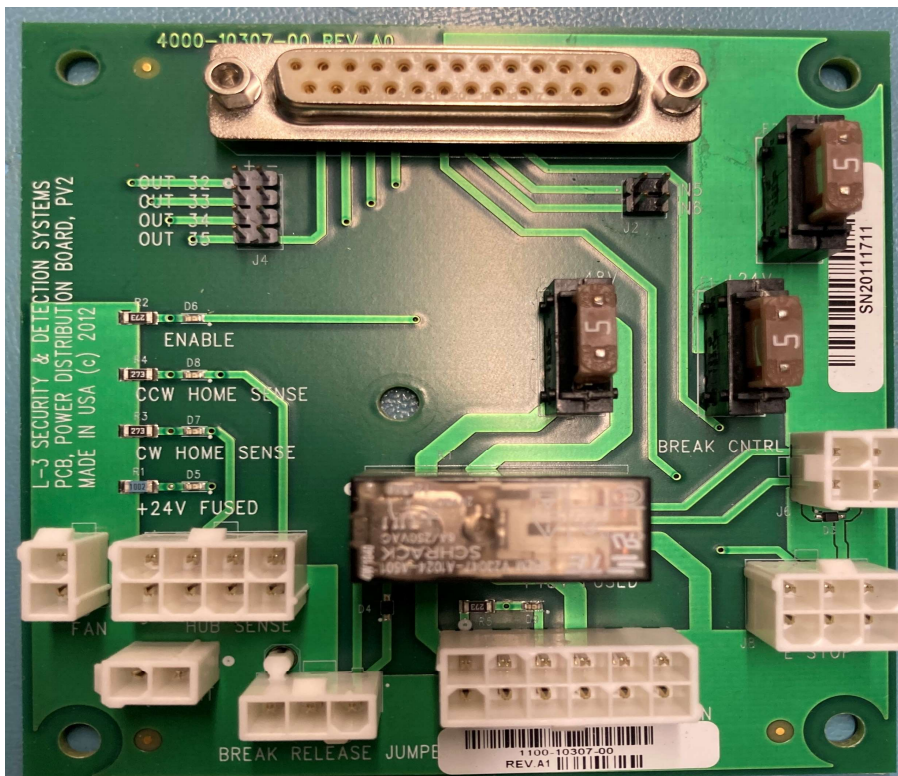


Figure 7-37. Motor/Gearbox Assembly, Replacement

17) Motion control (Motor controller)

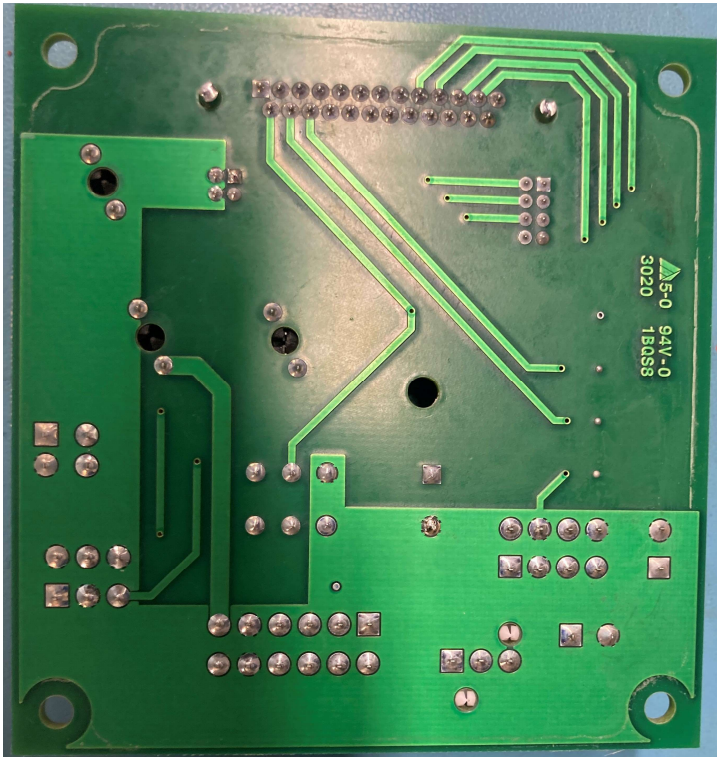


18) Power distribution board front





19) Power distribution board other side



20) Lane Control Computer (LCU) Front view



21) Lane Control Computer (LCU) Back View



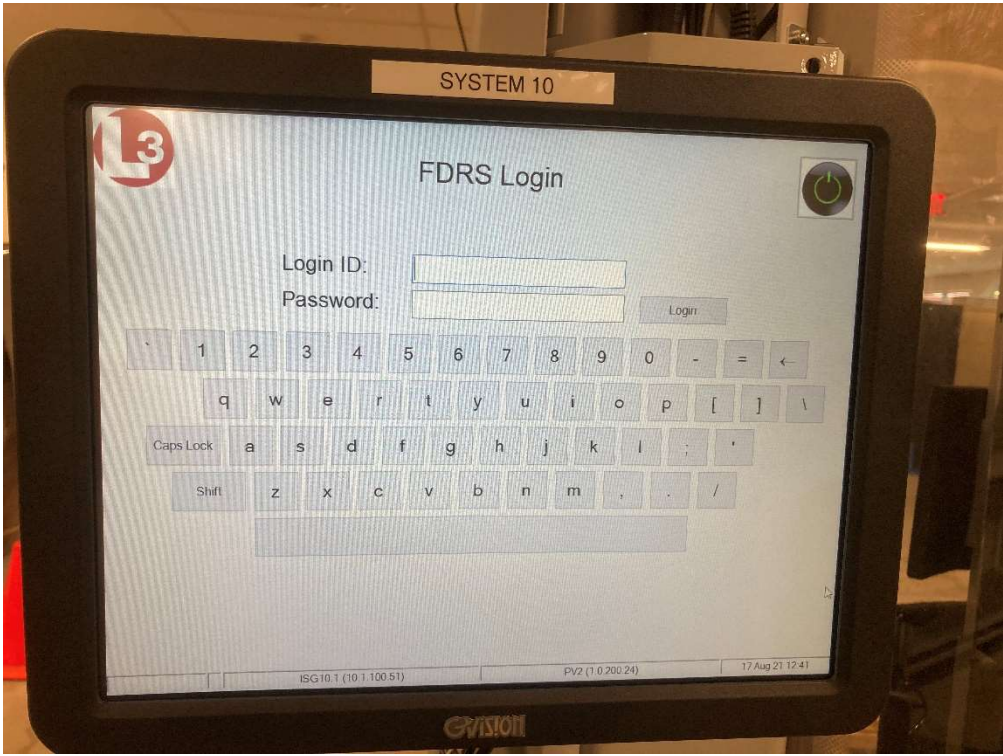
22) Lane Control Computer (LCU) Serial Number Label







23) Operator Control Panel (OCP)



24) Operator Control Panel (OCP) Serial Number label.

