

Chargeable Wireless Optical Mouse User Manual

Welcome

Thank you for selecting this product! This mouse is one kind of newly developed wireless RF mice in our company, and it uses the global-used frequency of 27MHz. The comfortable and perfect shape is designed according to somatology. With it, you can get rid of the bondage of wires and enjoy your beautiful life from the high technology.

Product Features

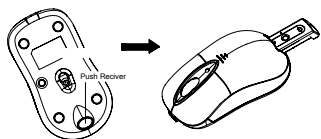
1. The data transmitted over radio frequency 27MHz, and you enjoy fully free wireless space. It has 256 ID code, there is no interference even many mice being used at the same time.
2. With hidden inside receiver, be able to shut off the power automatically.
3. Double functions of automatically saving-power sleeping and shut by hand, battery life prolonged.
4. With charge and regular circuit, it can use the attached retraceable cable to charge for the mouse. Even if there is no battery in the mouse, you can use the mouse directly (But please don't pull out the receiver). Thus it resolves the problem of lack the battery.

Systems Compatibility

IBM PC & its compatible computer and Windows Me/2000/XP

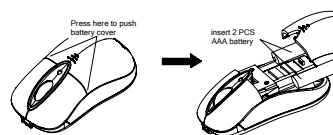
Build-in mini receiver

As below picture, pressing the receiver-out button, and the receiver can spring out automatically. If you push the receiver back to the transmitter, power will be cut down automatically.



The Steps of Battery Installation

1. Please prepare for two PCS new AAA recharge batteries
2. Press the battery cover at the location of both side of mouse and pull the battery cover rearward, and pull out the battery cover (please refer to the following picture)
3. Please insert the batteries correctly according to the polarity marks of the battery grooves.
4. Pull the battery covers forward, when you hear "crack" sound which shows the battery cover is locked successfully.



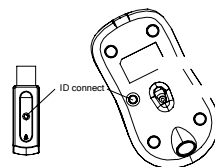
Receiver Installation

1. please use extended cable, and put the receiver and transmitter on one desktop, in this way, you may have higher working efficiency.
2. If you use PS/2 connector, please use the USB to PS/2 adaptor and connect with the connector before your computer start-up.
3. For laptop, you may connect the receiver directly with the USB connector.

Step of data connection

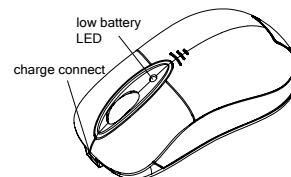
1. Please move the mouse near to the receiver
2. Press the ID button of receiver top by hand, the red LED beside ID button starts to flash slowly. Press the ID button of mouse bottom with some hard and acute object within 10 seconds, the receiver light will flash very fast, a few seconds later it will be stopped. You may start to use it.

3. Working distance: within 0.6-1.5 m



Charge Function

When using mouse, if the red led of the low battery behind the wheel flashes, please change batteries or charge them. The mouse can use USB cable to charge, connect one side of USB cable to the connector of the board, and the other side to USB connector before the mouse, thus it can successfully charge the battery. It can charge while you use the mouse. It is full within about 3-4 hours, and then unplugs the connector to stop the charge. Please note that the time of charge may vary when the degree of discharge is different.



Attention Please

1. Please don't make the mouse far away from the receiver in order to work more smoothly.
2. You'd better use the mouse on the white desk, in this way the batteries can be used longer time. Please remove the batteries if the mouse will not be used for a long time or if you travel outside.
3. This mouse with save power sleeping functions, please press any key or scroll the wheel to wake up the mouse when it is sleeping.
4. If you want to take off the mouse power, please continue to press the ID switch of the mouse bottom over 3

seconds. If you want to take on the power, please click the ID switch once again.

5. The optical mouse will not work freely on a smooth desk, glass, any reflecting surface, 3D mouse pad.
6. When you move the mouse, if the light of the battery before the receiver flashes, which shows that the power is nearly finished. Please change the proper-sized new battery or charge it immediately.
7. You can place the receiver in the mouse when you want to carry the mouse on business, and press the switch of ID for a long time so as to switch off the power.

Caution

Any changes or modifications not expressly approved by the party responsible for compliance could void the user's authority to operate the equipment.

Note

Note: This device complies with Part 15 of the FCC Rules.

Operation is subject to the following two conditions:

- (1) This device may not cause harmful interference, and
- (2) This device must accept any interference received, including interference that may cause undesired operation.

These limits are designed to provide reasonable protection against harmful interference in a residential installation. This equipment generates, uses and can radiate radio frequency energy and, if not installed and used in accordance with the instructions, may cause harmful interference to radio communications. However, there is no guarantee that interference will not occur in a particular installation. If this equipment does cause harmful interference to radio or television reception, which can be determined by turning the equipment off and on, the user is encouraged to try to correct the interference by one or more of the following measures:

* Reorient or relocate the receiving antenna.

* Increase the separation between the equipment and receiver.

* Connect the equipment into an outlet on a circuit different from that to which the receiver is connected.

* Consult the dealer or an experienced radio/TV technician for help.