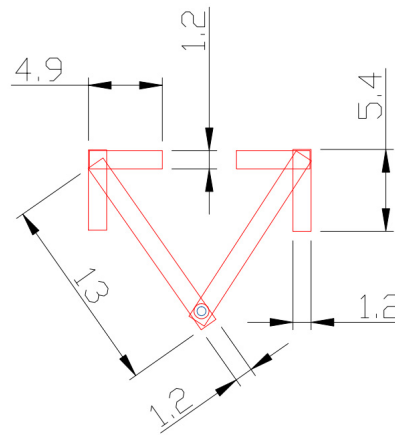
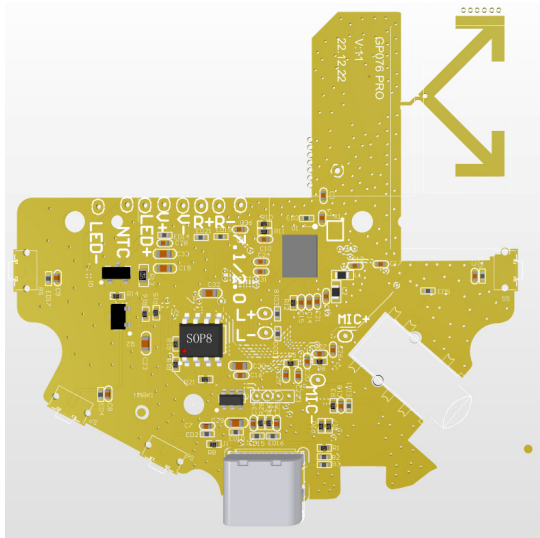
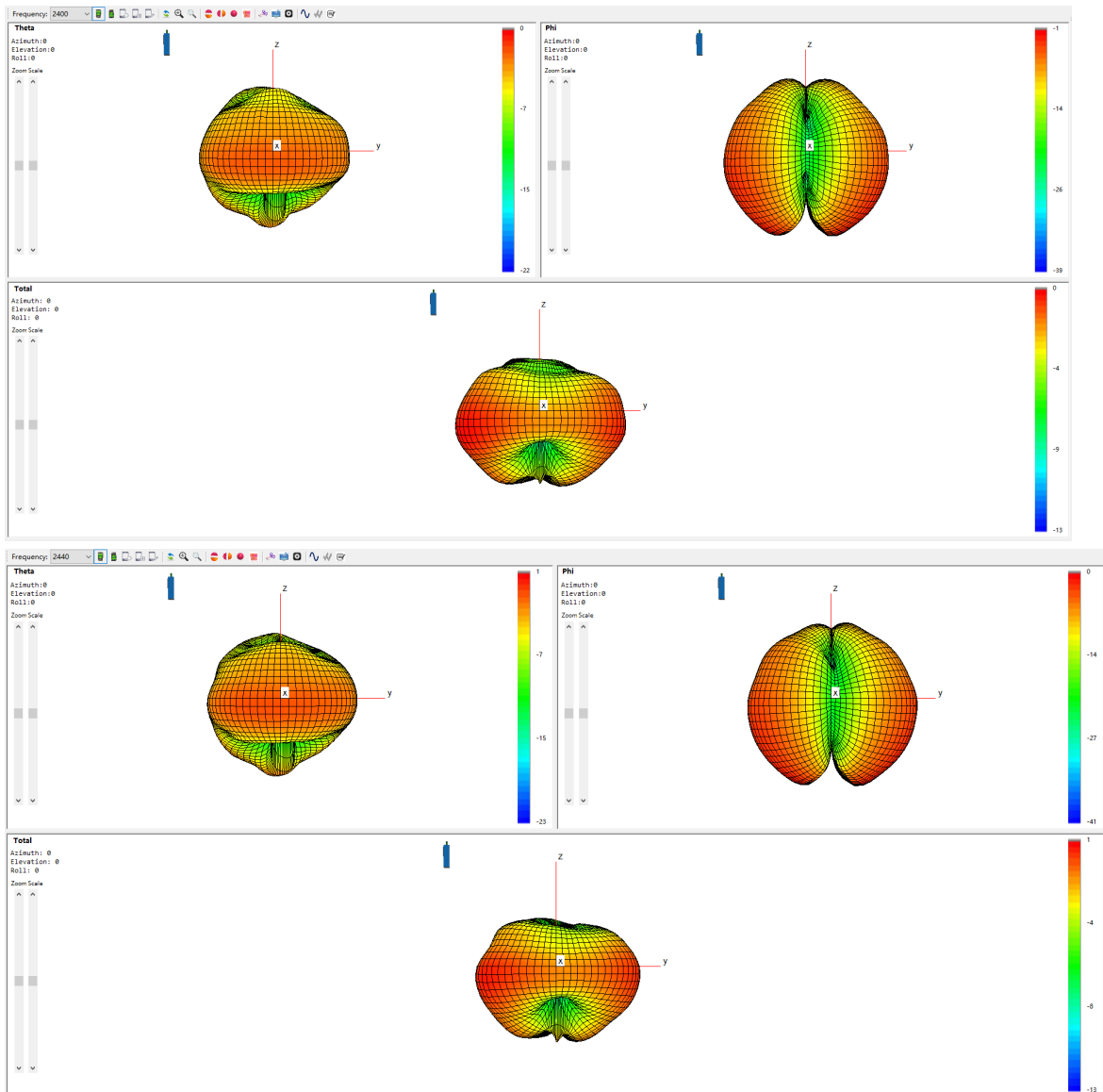
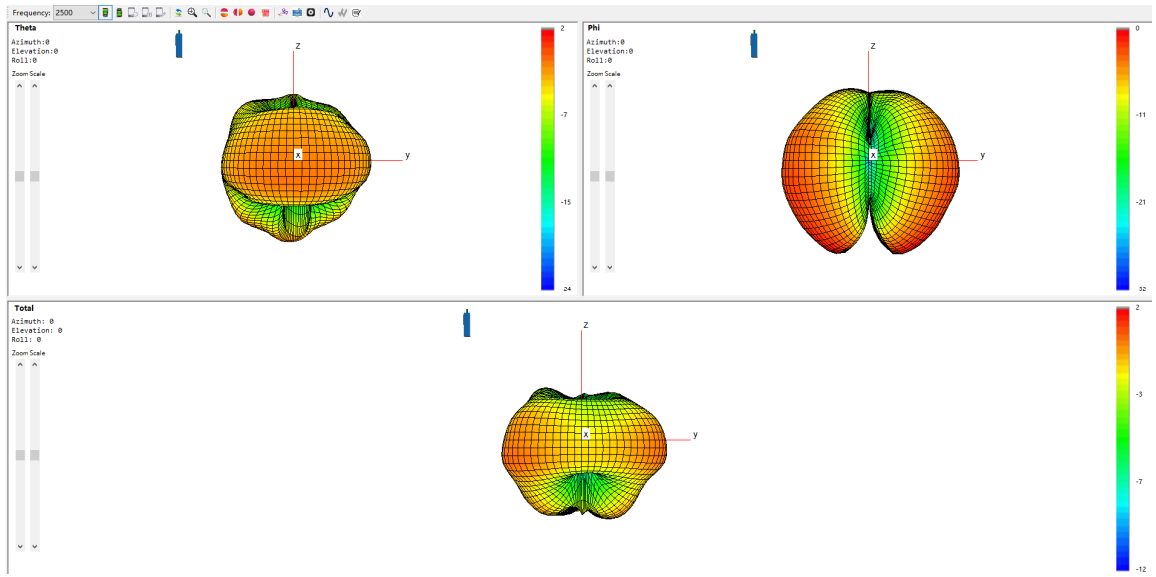


1. Manufacturer: XiiSound Technology Corporation; Type: PCB Antenna; Model:H510-PRO
2. Appearance and Size

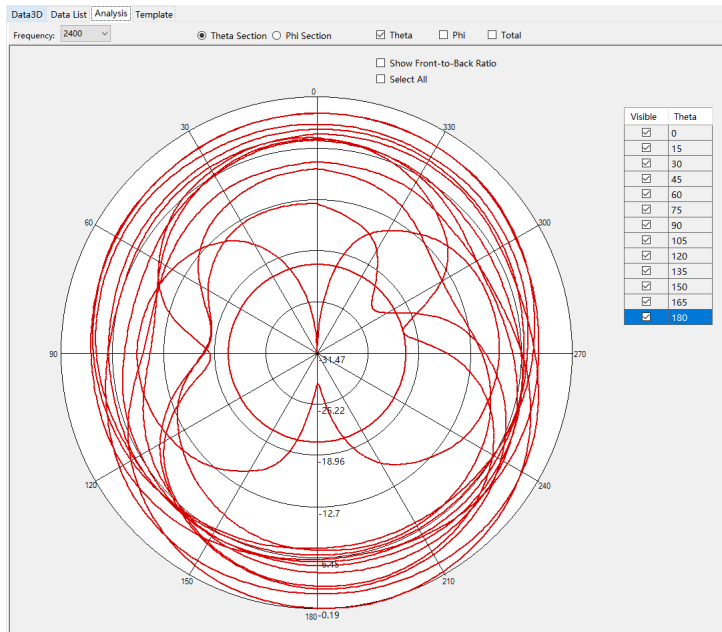


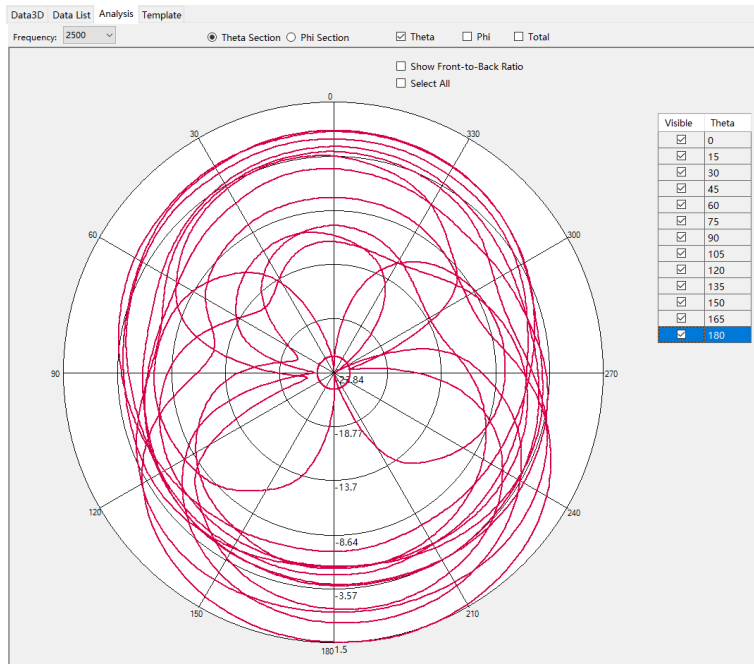
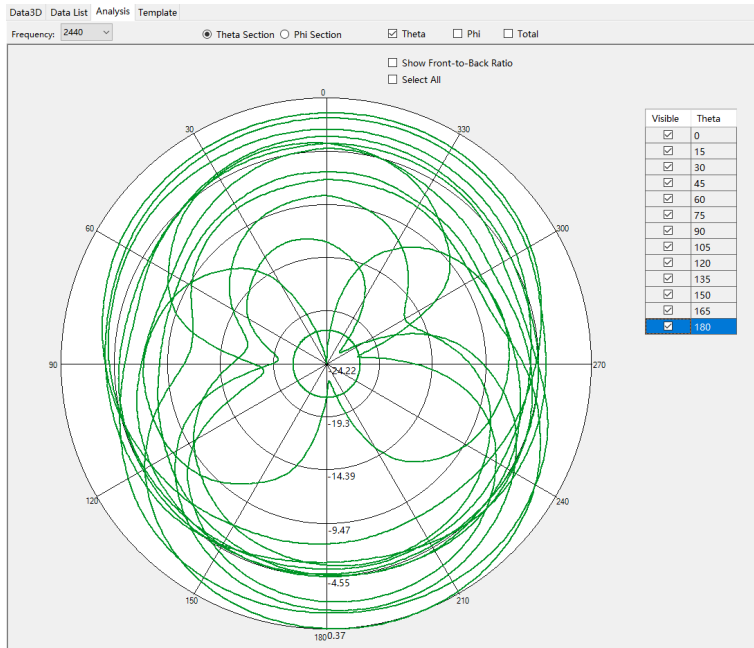
3. Chamber Test Data





TestItem	Pas_Log	TestSyst.	Passive	StartTime	EndTime	TotalTime	CreateTL	Polariza.	Linear	Theta_X	Phi_X	Theta_ML	Phi_Max	Theta_Min	Phi_Min	Directi...	UHSP/T...	UHDP/T...	Gain	Efficien...	Efficien...	UHFeffL	UHFeffC			
Model	4.12			11:01:43	11:05:16	00:03:32	2023/1...																			
1	2400	-3.1709...	-0.1174...	-12.803...	105	300	-5.8092...	-4.3920...	-7.2504...	-5.3238...	-0.2141...	Theta	135	195	-0.2141...	-1.62838...	-31.4718...	-38.440...	3.05342...	-4.0795...	39.0880...	-0.1174...	-3.1709...	48.1846...	-7.2504...	18.8344
2	2410	-2.9609...	0.09392...	-12.803...	105	300	-5.6096...	-4.1799...	-7.0328...	-5.1189...	-0.0618...	Theta	135	195	-0.0618...	-1.4846...	-27.756...	-37.639...	3.05491...	-4.0718...	39.1577...	0.09392...	-2.9609...	50.5709...	-7.0328...	19.8024
3	2420	-2.7417...	0.26787...	-12.475...	105	300	-5.3829...	-3.9500...	-6.8078...	-4.9033...	0.06242...	Theta	135	195	0.06242...	-1.3071...	-26.507...	-39.576...	3.00958...	-4.0661...	39.2093...	0.26787...	-2.7417...	53.1898...	-6.8078...	20.8553
4	2430	-2.5552...	0.34795...	-12.461...	105	300	-5.2074...	-3.7636...	-6.6028...	-4.7288...	0.23700...	Theta	135	195	0.23700...	-1.04551...	-24.988...	-35.493...	2.90317...	-4.0475...	39.3768...	0.34795...	-2.5552...	55.5235...	-6.6028...	21.8634
5	2440	-2.3882...	0.48974...	-12.135...	105	300	-5.0416...	-3.5969...	-6.4130...	-4.5766...	0.34884...	Theta	135	195	0.34884...	-0.8329...	-24.221...	-40.057...	2.87797...	-4.0248...	39.5834...	0.48974...	-2.3882...	57.7001...	-6.4130...	22.8397
6	2450	-2.2102...	0.70767...	-11.819...	90	315	-4.8711...	-3.4289...	-6.2289...	-4.4041...	0.60250...	Theta	135	195	0.60250...	-0.4770...	-23.320...	-41.875...	2.91796...	-4.0166...	39.6586...	0.70767...	-2.2102...	60.1133...	-6.2289...	23.8401
7	2460	-2.1179...	0.90294...	-11.406...	135	195	-4.8034...	-3.3489...	-6.1127...	-4.3262...	0.90283...	Theta	135	195	0.90283...	-0.3293...	-22.938...	-45.296...	3.02090...	-3.9947...	39.8586...	0.90294...	-2.1179...	61.4048...	-6.1127...	24.4751
8	2470	-2.0385...	1.13179...	-10.863...	135	195	-4.7368...	-3.2783...	-6.0271...	-4.2509...	1.13156...	Theta	135	195	1.13156...	-0.06494...	-23.701...	-41.4893...	3.17033...	-3.9885...	39.9154...	1.13179...	-2.0385...	62.5383...	-6.0271...	24.9624
9	2480	-2.0709...	1.35504...	-10.373...	135	195	-4.7938...	-3.3307...	-6.0689...	-4.2771...	1.35378...	Theta	135	195	1.35378...	-0.0172...	-23.518...	-33.988...	3.42603...	-3.9979...	39.8295...	1.35504...	-2.0709...	62.0727...	-6.0689...	24.7233
10	2490	-2.0544...	1.54895...	-10.817...	135	195	-4.8013...	-3.3269...	-6.0647...	-4.2523...	1.54611...	Theta	135	195	1.54611...	0.08079...	-23.460...	-30.523...	3.60335...	-4.0103...	39.7155...	1.54895...	-2.0544...	62.3102...	-6.0647...	24.7468
11	2500	-2.2009...	1.49668...	-11.342...	135	195	-4.9592...	-3.4773...	-6.2442...	-4.3773...	1.49177...	Theta	135	195	1.49177...	-0.0260...	-23.708...	-31.666...	3.69760...	-4.0433...	39.4156...	1.49668...	-2.2009...	60.2431...	-6.2442...	23.7452





Instrument: R8S_ZND
TestSystem: Passive
TestMode:
D:\GTS Batch\ZND\2400-2500.xml: 2400-2500.xml
Trace Name: S21
Power: 0
Bandwidth: 0.1
Average Factor: 1
Test Mode: Log
Skip Calibration: True
DUT Type: Linear
Start: 0
End : 360
Step: 15
Start: 0
End: 180
Step: 15
Display Frequency Mode: Auto
Display Frequency:
Test Method: Linear

:

Start	End	Interval
2400	2500	10

:

Start	End	Interval
800	0	0
1400	0	0
2000	0	0
1800	0	0

CW_Freq: 2000

Correction Method: None

AddPLConst: 2

:

Interval	Freq	Pathloss
Start	1800	1
Stop	2400	6

Load File: C:\Users\admin\Desktop\Add pl.csv