

## US UK

### Dear user

Thank you for choosing REDRAGON product. To protect your rights and for better customer service, please read the following warranty rules carefully.

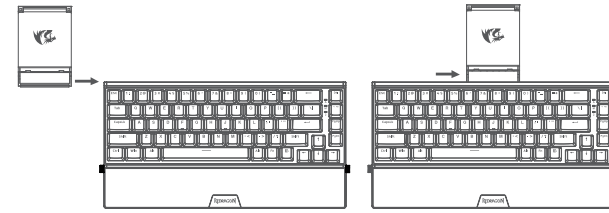
1. Within 18 months of purchase date, repair is guaranteed for failure due to electrical circuit problems. Other damages, such as disassembly, hard impacts, submersion into water, plugging into improper current or voltage, and damage caused by natural disasters such as fire, flood, or earthquake are not included.
2. Consumable parts (such as foot pads) and spare parts replacement are not included in our warranty.

1

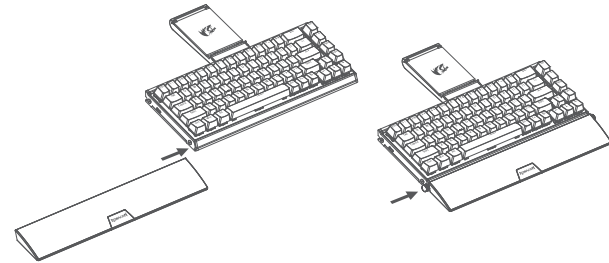
### OS Support

WinXP/Vista/Win7/Win8/Win10/Win11/Mac OS

#### How to install the cell phone stand



#### How to install the palm rest



2

### How to connect the keyboard with a computer

#### Wired Connection

1. Slide the 2.4G/OFF/BT switch on left side of the keyboard to OFF.
2. Take out the USB A to USB Type C cable in the package and connect the keyboard with your computer, the computer will recognize and configure the keyboard automatically.
3. Once the keyboard is powered up, charging begins. The LED marked with M lights on red. It will turn to white when keyboard is fully recharged.

#### 2.4G Wireless Connection

1. Slide the 2.4G/OFF/BT switch on left side of keyboard to 2.4G.
2. Press [FN]+[R] for about 3 seconds, the LED marked with M flashes quickly in green, plug the USB receiver into any available USB port on your computer within 20 seconds. The computer will recognize and configure the keyboard automatically.
3. The indicator will flash in Red when the battery is low. Please recharge the keyboard in time by plug type C cable into computer or it will turn off automatically soon, Please note LED marked with M will be light on Red while charging, it turn to Green when charging completed( In 2.4g connecting mode)

#### Bluetooth Connection

1. Slide the 2.4G/OFF/BT switch on left side of keyboard to ON.
2. Press [FN]+[Q](or [W]/[E] for other Bluetooth devices), the LED marked with M flashes in blue (or cyan/magenta for the others)
3. Turn on Bluetooth and scan for available devices on your computer or smart phone, find the keyboard device name K641, click to pair.
4. The indicator will flash in Red when the battery is low. Please recharge the keyboard in time by plug type C cable into computer or it will turn off automatically soon, Please note LED marked with M will be light on Red while charging, it turn to cyan/magenta when charging completed( In Bluetooth connecting mode)

3

### Function Introduction

1. With standard USB and 2.4G/BT connections, the keyboard can be used on computer without any software or driver installation.
2. There are 20 backlight effects.
3. Commands of key combinations with [FN] key
  - [FN1]+[PGUP]: Change the key backlight mode. There are 20 backlight effects.
  - [FN1]+[SHIFT]: Change the keyboard side light mode, there are 10 backlight effects.
  - [FN1]+[PGDN]: Change the key back light color.
  - [FN1] + [←]: Slow down the running speed of backlight .
  - [FN1] + [→]: Add up the running speed of backlight.
  - [FN1] + [Win]: Disable or enable the [Win] and [APP] key.
  - [FN1] + [Q]: Select Bluetooth device one (for Bluetooth connection).
  - [FN1] + [W]: Select Bluetooth device two (for Bluetooth connection).
  - [FN1] + [E]: Select Bluetooth device three (for Bluetooth connection).
  - [FN1] + [R]: Change to 2.4G wireless connection. Press and hold the [FN1] +[R] for 3 seconds to pair the keyboard with its receiver.
  - [FN1] + [DEL]: Set the keyboard to default setting.
  - [FN1] + [ { } ]: Home
  - [FN1] + [ ] ]: End
  - [FN1] + [ ; ]: Prtsc
  - [FN1] + [ ' " ]: Insert
  - [FN1] + [ Z ]: Volume-
  - [FN1] + [ X ]: Volume+
  - [FN1] + [ C ]: Mute
  - [FN1] + [ V ]: Stop the media play
  - [FN1] + [ B ]: Previous track
  - [FN1] + [ N ]: Play/Pause
  - [FN1] + [ M ]: Next track
  - [FN1]+[1~0]: F1~F10

4

### Macro recording function

There are 6 profiles keys from G1 to G6.

1. Press FN2+[7] key start to recording, the key lights ON.
2. Press FN2+[1~6], the G key light ON and twinkle in Red.
3. Record the desired keys.
4. Press FN2+[7] key to complete recording, The MR key lights OFF.

For example: FN2+ MR → 1 → ABC → FN2+MR

### How to play Macro

Press FN2+[1~6]

For example: FN2+1 → (ABC)

### How to delete Macro

Press FN2+[Del] and hold for 3 seconds to delete all macro recording.

### How to recharge the keyboard

Find the USB A to USB type C cable in the packaging, plug the keyboard and connect it with computer for charging, the LED indicator(M) of keyboard will be turn to red.  
Remark: The LED indicator (M) will turn to red when keyboard is out of battery.

### Keyboard sleep mode and power safe function

In 2.4Ghz and Bluetooth connecting, to save power, there are two conditions that keyboard get into sleep mode, all LEDs and backlight turn OFF, **please click any key to wake up the keyboard(Not including scroll button).**

Condition #1: 3 minutes out of working .

Condition #2: 30 minutes out of working.

### FAQ

1. If the keyboard doesn't respond, please check if the keyboard's USB cable is correctly

5

inserted into the corresponding USB port on the computer, or try another USB port on the computer.

2. If you spill liquid on the keyboard, please unplug the keyboard's USB cable from the computer immediately. Wipe off excess liquid and put the keyboard in a dry and ventilated place. Make sure the keyboard is dried naturally before the next use



### BATTERY SAFETY GUIDELINES

DO NOT replace the battery with a different model.

DO NOT use this product if the battery shows signs of damage including, but not limited to tearing, deformation, leakage, or the smell of electrolytic material.

DO NOT touch the battery if material is leaking and seek immediate medical attention if any material comes into contact with your skin or eyes.

DO NOT expose the battery to liquid, heat sources, electricity (outside of the product itself), or other non-standard operating condition.

DO NOT remove the battery except for proper disposal and recycling as required by local laws and regulations.

DO NOT impact, bend, alter, disassemble, or otherwise damage the battery as the contents are volatile, hazardous, and can be harmful.



### CAUTION:

Failing to follow all safety guidelines may result product damage, explosion, fire, and/or electric shock.

**This device contains licence-exempt transmitter(s)/receiver(s)** that comply with Innovation, Science and Economic Development Canada's licence-exempt RSS(s). Operation is subject to the following two conditions: (1) This device may not cause interference. (2) This device must accept any interference, including interference that may cause undesired operation of the device.

5

**Cet appareil contient des émetteurs / récepteurs** exemptés de licence conformes aux RSS (RSS) d'Innovation, Sciences et Développement économique Canada. Le fonctionnement est soumis aux deux conditions suivantes : (1) Cet appareil ne doit pas causer d'interférences. (2) Cet appareil doit accepter toutes les interférences, y compris celles susceptibles de provoquer un fonctionnement indésirable de l'appareil.

### FCC Statement

Changes or modifications not expressly approved by the party responsible for compliance could void the user's authority to operate the equipment.

This equipment has been tested and found to comply with the limits for a Class B digital device, pursuant to Part 15 of the FCC Rules. These limits are designed to provide reasonable protection against harmful interference in a residential installation. This equipment generates uses and can radiate radio frequency energy and, if not installed and used in accordance with the instructions, may cause harmful interference to radio communications. However, there is no guarantee that interference will not occur in a particular installation. If this equipment does cause harmful interference to radio or television reception, which can be determined by turning the equipment off and on, the user is encouraged to try to correct the interference by one or more of the following measures:

-- Reorient or relocate the receiving antenna.

-- Increase the separation between the equipment and receiver.

-- Connect the equipment into an outlet on a circuit different from that to which the receiver is connected.

-- Consult the dealer or an experienced radio/TV technician for help

This device complies with part 15 of the FCC rules. Operation is subject to the following two conditions (1) this device may not cause harmful interference, and (2) this device must accept any interference received, including interference that may cause undesired operation.

6



REDRAGON

SHACO PRO  
3 MODES 60% ALUMINUM RGB MECHANICAL KEYBOARD

Wired and Wireless (2.4GHz and Bluetooth )  
MECHANICAL KEYBOARD OPERATING INSTRUCTIONS

型号	K641-RGB-PRO/8876	备注：尺寸：100x100mm (折页)		Eastermimes Tech
名称	说明书	材质：80g书写纸		
日期	2023-8-29(修改)	印刷：单黑色双面印刷		
页码	1 OF 1	文件编号		
绘图	雷国建	审核		核准
				版本 A.2