





RF Wireless  
Optical Mouse

FCC ID: TUV052229-081TX

FC

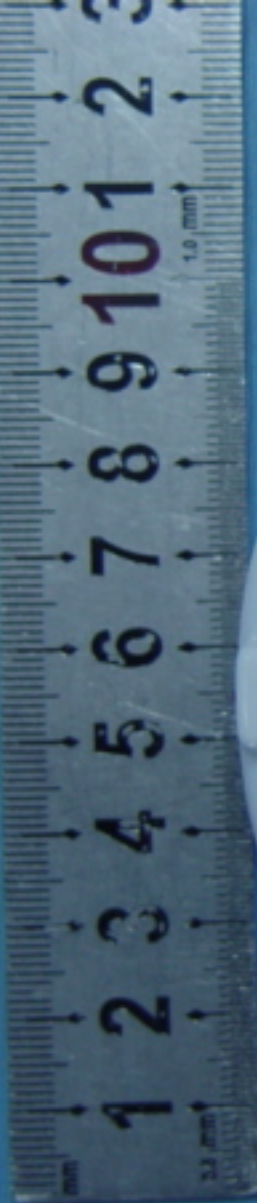
CE

Logitech Technology Co., Ltd.

© copyright

Model 3-0111-2004

The device complies with Part 15 of the FCC Rules. Changes to these settings may void the warranty.





RIF Wireless  
Optical Mouse

FCC ID: T1M0622B-017X

FC

CE

Evolution Three Technology Co. Ltd

Model: T1M0622B-017X

Net Weight: 1.8g (0.063oz)

This device complies with all applicable FCC rules, part 15, subpart B, of the FCC rules, is certified to the EMC Directive, and is not a restricted device.

ID corrected

5C 700/05