

2626 Bluetooth optical Mouse

(BCM20730+PAW3212)

MODEL:DS-2626

System requirements:

- Compatible with standard Microsoft
- Windows O.S. and IBM (support USB device)

Product Feature

Bluetooth V3.0 Version, good compatibility

PAW3212 sensor, high performance and low power

5 switchable CPI: 800-1200-1600-2000-2400

IR light tracing technology, work with many of surface

Power switch design for save energy with multi-grade sleeping mode

Support Windows XP/Vista/7, Mac10.x

Power supply 1 AA battery only, available with AA battery.

Installation

A, Battery installation

1. Find Bluetooth mouse in package
2. Install 1PCS AA battery into Mouse body Properly, for more weights for mouse , could be install 2PCS AA battery
3. Put on power switch at the bottom of Mouse, LED indicator will keep flash for one second
4. Success to installation of battery

B, Software installation

Skip the step if you already have installed Bluetooth driver and Bluetooth dongle.

Before connection, make sure the Bluetooth dongle and driver is installed in your computer.

C, How to pair Bluetooth mouse

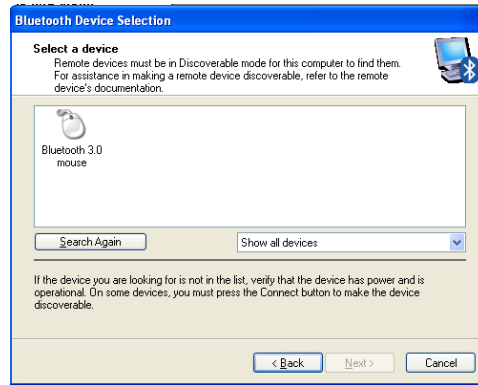
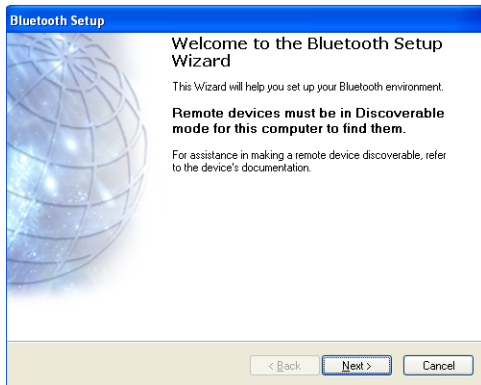
For example, pair by Widcomm Bluetooth software

1. Put on the connect switch on mouse bottom, LED connection indicator will flash

2. Double click the icon on PC desk “ my Bluetooth place”
in menu, press “next” in setting guide,




My Bluetooth
Places

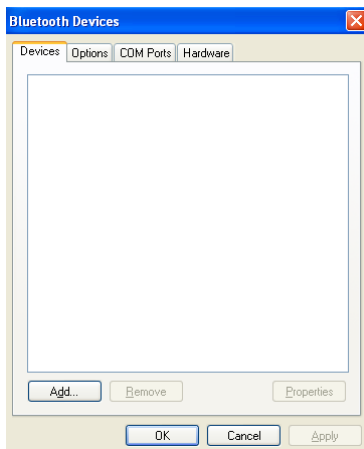


3. Find Bluetooth mouse after scanning
4. Click bluetooth 3.0 mouse, go next step, Bluetooth mouse pair success, you can use your mouse now.

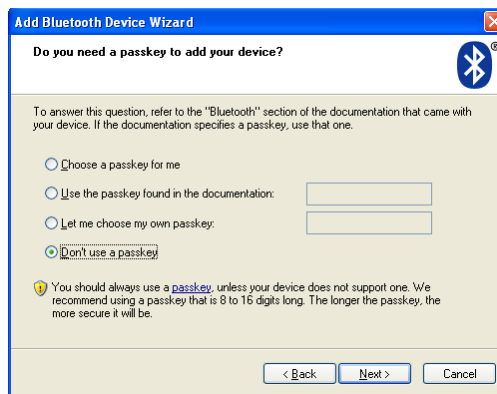
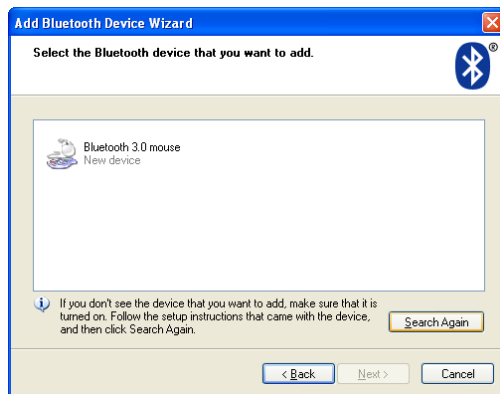


For example, pair with Microsoft Bluetooth driver

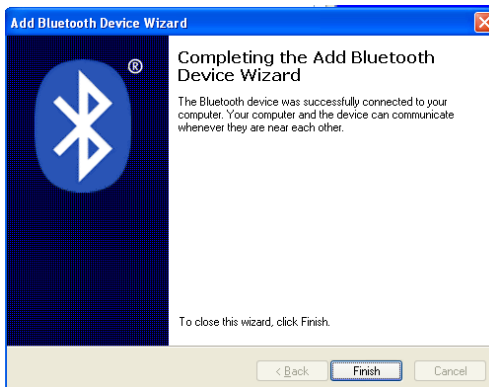
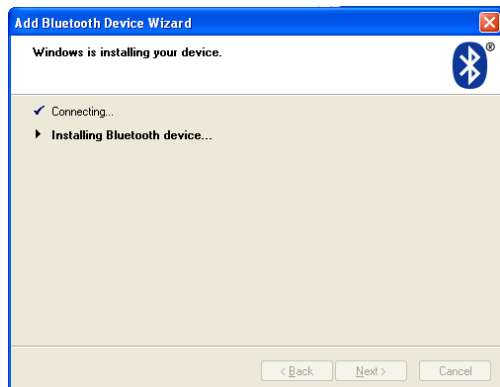
1. Put on the connect switch on mouse bottom, LED connection indicator will flashing
2. Double click the icon on right corner , or you can find the Bluetooth icon in control panel, turn on the Bluetooth management, add a new Bluetooth device in menu, press “next” in setting guide,



3. Find Bluetooth 3.0 mouse after scanning, click “next”
4. Click “don’t use a passkey” then “next”



4. The Bluetooth device will connecting and the match completely.



The Mouse functions

1. CPI adjustable function

With 5 adjustable CPI 800/1200/1600/2000/2400, factory setting is 1200CPI. Press the switch button on top of Mouse can easy to adjust CPI. LED indicator will flash one time while it converting to 800CPI, LED will flash twice while it converting to 1200CPI, LED will flash three times while it converting to 1600CPI, LED will flash four times while it converting to 2000CPI, LED will flash five times while it converting to 2400CPI

2. Low power indication

LED will flash in red when battery is getting out of power, remind that it need to change the new battery

3. Saving power mode and power switch off

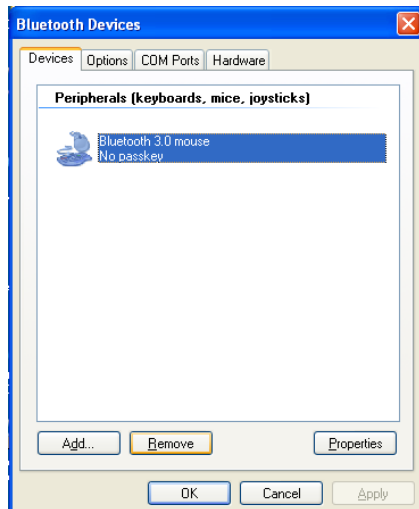
If mouse is stay out of work for 10 minutes, it will turn to power saving mode, press any button to restart it. You can switch off the mouse to save power.

4. Reconnection

If you press the connect button on mouse bottom by accident, Bluetooth will reconnection. It will be automatically reconnect after 10 minutes, or turn off power and turn it on again, Bluetooth will connect immediately.

If the Bluetooth connect was cut improperly, please reconnect it.

If it is failed to reconnect, please delete the Bluetooth device and install it again, or cut the connection in the menu, reconnect it by software as the following picture,



Remark:

If the Bluetooth mouse doesn't work properly, please try the following step,

1. Choose branded Bluetooth dongle, it may caused compatibility problem for bad quality dongle
2. Check the user manual for installation or check with local distributor for it.
3. Make sure Bluetooth dongle is installed and workable in your computer.
4. Make sure Bluetooth mouse work in 10 meters range with dongle.
5. If you change a new dongle , it may need to match again with Bluetooth mouse.
6. Check the battery , please replace a new one if it is out of power.
7. Make sure the transmission speed is enough if you have other Bluetooth device working with your computer.

FCC Statement

Changes or modifications not expressly approved by the party responsible for compliance could void the user's authority to operate the equipment.

This equipment has been tested and found to comply with the limits for a Class B digital device, pursuant to Part 15 of the FCC Rules. These limits are designed to provide reasonable protection against harmful interference in a residential installation. This equipment generates uses and can radiate radio frequency energy and, if not installed and used in accordance with the instructions, may cause harmful interference to radio communications. However, there is no guarantee that interference will not occur in a particular installation. If this equipment does cause harmful interference to radio or television reception, which can be determined by turning the equipment off and on, the user is encouraged to try to correct the interference by one or more of the following measures:

- Reorient or relocate the receiving antenna.
- Increase the separation between the equipment and receiver.
- Connect the equipment into an outlet on a circuit different from that to which the receiver is connected.
- Consult the dealer or an experienced radio/TV technician for help

This device complies with part 15 of the FCC rules. Operation is subject to the following two conditions (1) this device may not cause harmful interference, and (2) this device must accept any interference received, including interference that may cause undesired operation

Company Name: Eastern Times Technology Co., Ltd

Address: Building D, Nan An Industry Area, Youganpu Village, Fenggang Town, Dongguan City, Guangdong, China

E-Mail: lh@easterntimes.com.cn

Telephone No.: 008676986800666