

DS-2398 Bluetooth Laser Mouse Specifications

(BCM20730+A7030)

Thanks for choosing our product as your life partner firstly. DS-2398 is definitely one of most updated bluetooth mice in our company. It adopts the newest Bluetooth V3.0 technology, strong compatibility, easily connection, exquisite appearance, up to 1600CPI resolution ((Three Speed conversion). It surely helps you to get rid of the bound of cable in this high-end digital wireless world and choose what a comfortable life style on your own. Also you can find more fun to boost your work efficiency by using our product simultaneously enjoy the beautiful life which brings by high technology.

Features:

- Adopts the newest bluetooth 3.0 technology, strong compatibility, easily connection
- Avago Laser ship A7530, low power consumption. More stable cursor and stronger to pass the surface
- 800-1200-1600CPI resolution, precise orientation, easy to operate
- Two shortcut keys
- Support mobile activated function
- Rechargeable USB port function with patent
- Multistage sleeping mode, support power off completely
- Support Windows 2000/XP/Vista/7, Mac10.x O.S

Installment Instruction:

Step 1: Install the battery

Take the device out of the package

Insert 2PCS AAA Ni-MH battery inside the mouse by right direction

Please switch power to "ON" state in the bottom of the mouse, the indicator of mouse will flash for a moment

Battery installment completed

Step 2: Install adaptor (Dongle) and driver

If the bluetooth adaptor and driver (Internal or External) had been installed inside the computer then skip this step

Branded adaptor for recommendation otherwise compatibility problems will occur during use.

Please refer to the adaptor manual for installing the adaptor driver

Before matching, make sure the bluetooth adaptor and relevant driver had been installed inside the computer

Matching Steps:

The pictures below are different if use different hardware (Including adopter, computer etc.),software (Including O.S, Driver etc.). They are only for your information

A: Matching steps for Widcomm bluetooth driver mouse

1. Press the swith to “on” on the bottom of mouse, connection light of moude will shine



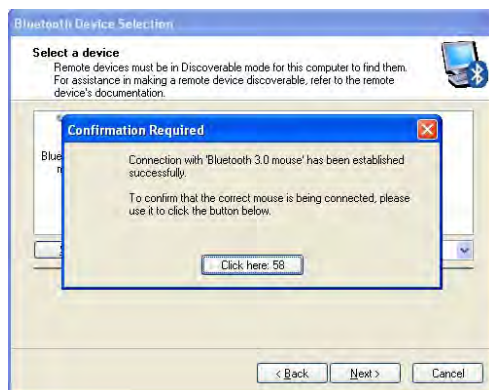
My Bluetooth Places

2.Double click the “ My Bluettoth location” on Desktop Icon” , open application.choose Menu Bluetooth-Add bluetooth setting, click “Next ” on setup wizard,




3: After scanning , the bluetooth will be detected by computer

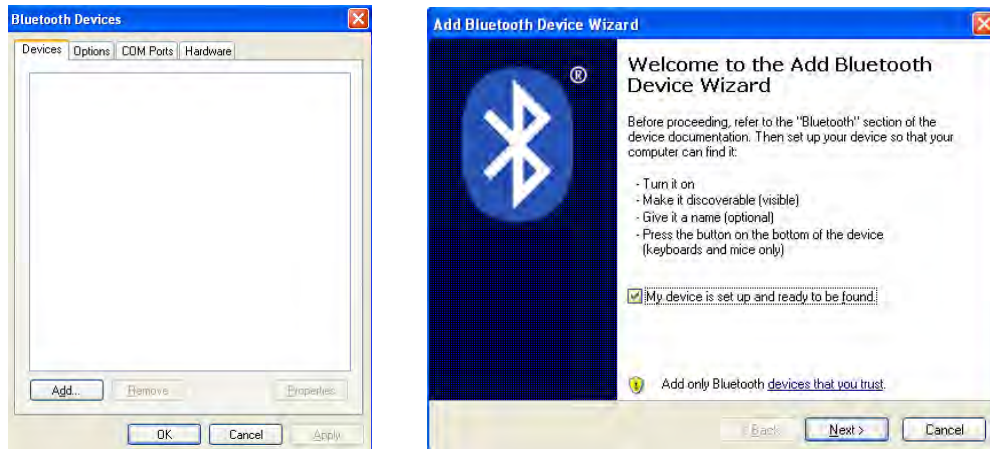
4. Choose “bluetooth 3.0 mouse”, then click “Next ”, the mouse was connected with the compurt successfully and the mouse can be used



Matching steps for Windows XP System comes with bluetooth driver

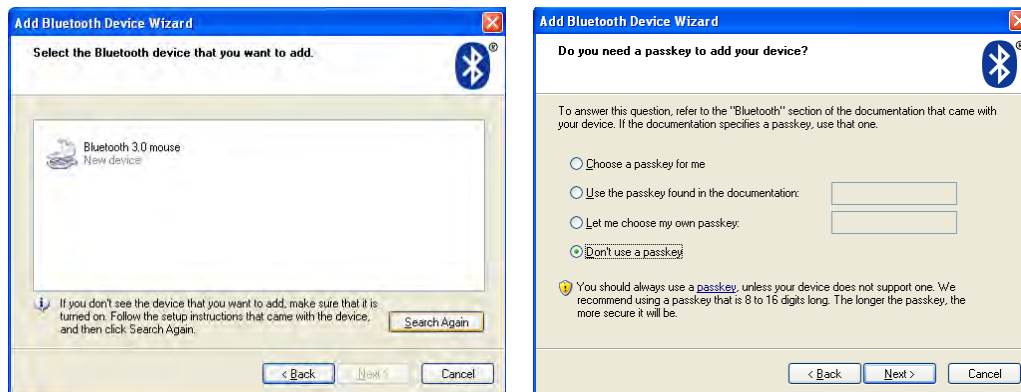
1. Press the switch to “on” on the bottom of mouse, connection light of mouse will shine

2. Double click the Bluetooth Icon “” on the desktop or on the lower-right corner of computer, open Bluetooth management interface. click “Add” then click “Next”



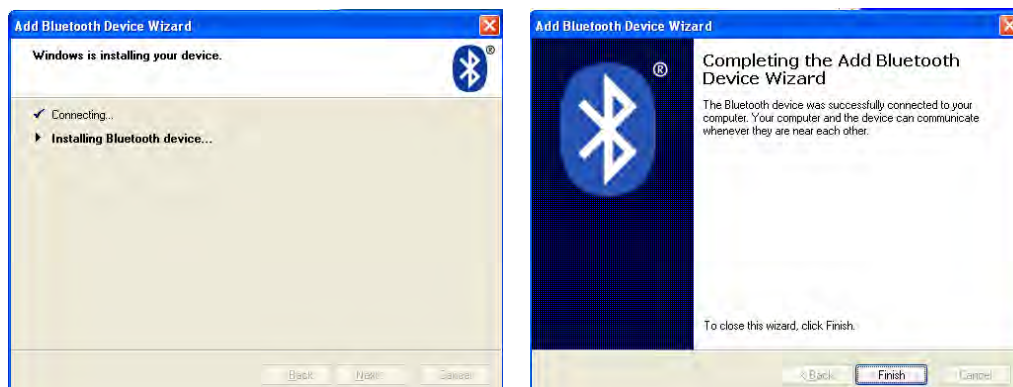
3. After the mouse is detected, choose mouse and click “Next”

4. Choose passkey is not necessary, click “Next”. The installment will be completed automatically by system



5. The installment of Bluetooth is installing

6. The installment will be completed soon and the mouse can be used

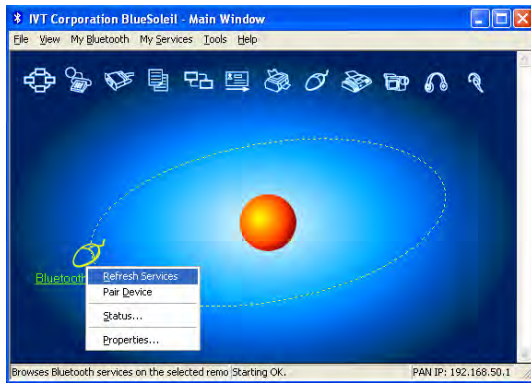
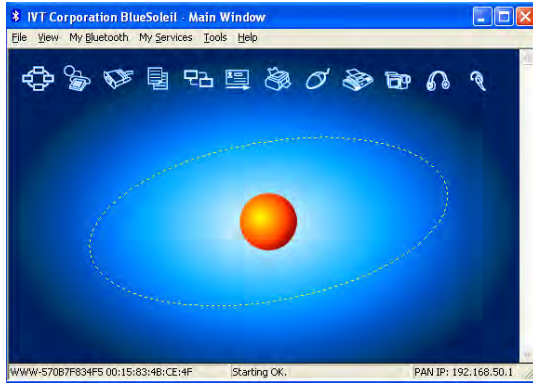


Matching Steps of mouse on IVT Bluetooth

1. Press the switch to “on” on the bottom of mouse, connection light of mouse will shine

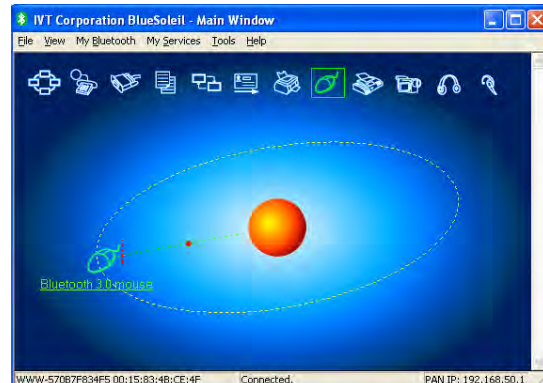
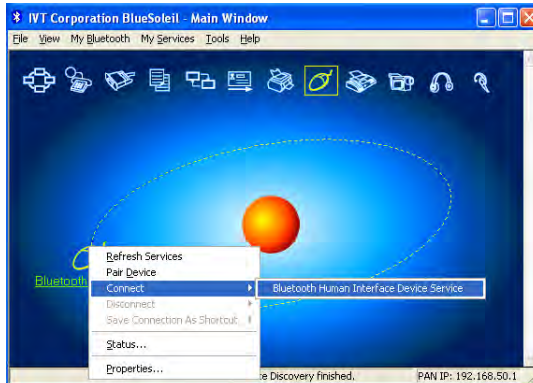


2. Double click the Icon” BlueSoleil on desktop, open IVT management interface, choose “Searching bluetooth Setting” on “ My Bluetooth”, click the ball and start to search mouse



3. Click the mouse device that had been detected, Click the right button , choose “ Refresh Service”.

4. Choose the “Bluetooth Setting” again, click the right button and choose “Bluetooth Human Interface Device Service” in “ Connect”, System will complete the installment of new bluetooth HID equipment then Bluetooth mouse can be used now.



Instruction for use:

1. CPI Switch function

The CPI key is for speed conversion: 800-1200-1600. When first connected, the default is 800CPI. After each switch, the mouse can remember the final CPI choice. During conversion, LED light flashes one time, it means 800CPI, LED light flashes twice, it means 1200CPI, LED light flashes three times, it means 1600CPI

2: Low battery reminder function

The power gets lower during use. Please recharge the battery in time once the LED shines red light

3: Auto saving function

The mouse will be sleeping if the mouse out of use after 10 minutes. Movement can awake the mouse. After connection, the mouse will be in the power saving state if unplug the adaptor or shut the computer down. Press any button to reuse. Please turn the mouse off during outing

4.USB rechargeable function with patent

Pls recharge the battery in time once the indicator remind of low power. Use the USB line attached in the packing. One end is connected into the computer's USB port, the other end is connected to the mouse's mini USB port, the recharge will begin automatically. The recharge time is 6-8 hours and recharge times is 500. The mouse can be use while recharging

Caution: Pls do not recharge for irreplaceable battery

The first recharge should be 16 hours to activate the battery fully

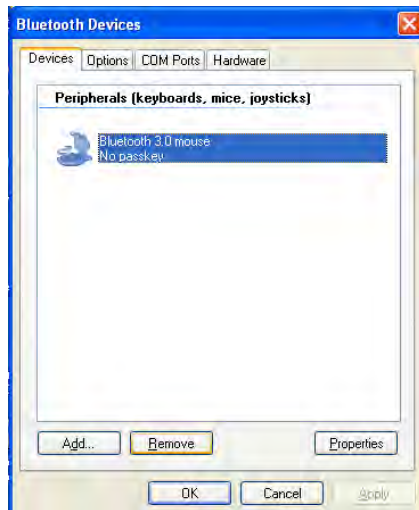
5. The forth and fifth keys can be defined

The default function of the forth and fifth keys are [Forward] and [Back]. If special driver are installed, there are more than dozens of functions can be defined in the optical disk (If optical disk equipped) or the driver can be download by the specific website.

6. If press the connct button carelessly during use. Bluetooth will be the reconnection state. Connection will be ok after 10 minutes or turn off then turn on the power switch

If any unnormal interruption, Pls reconnect. If reconnect unworks, Remove or disable mouse connection in "Bluetooth Devices", and reconnect by the above steps

Picture below is the device management window of "Bluetooth Devices" driver attached by "Windows" Choose the mouse icon and click the "Remove" the Bluetooth is omitted successfully



Trouble shooting

If the bluetooth mouse can't work with computer properly or work improperly, please try the resolutions as below:

1. Please use branded bluetooth adaptor, otherwise it can affect the compatibility to impede the normal usage
- 2: Please refer to the manual on how to install the adaptor drive, you can also call hotline: 400-602-8829 or log in www.easterntimes.cn for technical help
3. Please make sure that the bluetooth adaptor had been installed successfully before device connection and the bluetooth of computer works well
4. Make sure the device use within 10m working distance
5. Make sure the bluetooth device is not be replaced otherwise reconnection is needed.
6. If the computer connected other Bluetooth Terminal, please make sure the Bluetooth's speed is adequate
7. Check the battery in time, if the power is low pls recharge the battery immediately

FCC STATEMENT

1. This device complies with Part 15 of the FCC Rules.
Operation is subject to the following two conditions:
 - (1) This device may not cause harmful interference, and
 - (2) This device must accept any interference received, including interference that may cause undesired operation.
2. Changes or modifications not expressly approved by the party responsible for compliance could void the user's authority to operate the equipment.

NOTE: This equipment has been tested and found to comply with the limits for a Class B digital device, pursuant to Part 15 of the FCC Rules. These limits are designed to provide reasonable protection against harmful interference in a residential installation. This equipment generates, uses and can radiate radio frequency energy and, if not installed and used in accordance with the instructions, may cause harmful interference to radio communications. However, there is no guarantee that interference will not occur in a particular installation. If this equipment does cause harmful interference to radio or television reception, which can be determined by turning the equipment off and on, the user is encouraged to try to correct the interference by one or more of the following measures:

- Reorient or relocate the receiving antenna.
- Increase the separation between the equipment and receiver.
- Connect the equipment into an outlet on a circuit different from that to which the receiver is connected.
- Consult the dealer or an experienced radio/TV technician for help.

FCC Radiation Exposure Statement:

The device has been evaluated to meet general RF exposure requirement.
The device can be used in portable exposure condition without RF striction.