

## RF Wireless Optical Mouse User Manual

**Product: 2.4G Wireless Optical Mouse**

**Model Number: DS-2116 (2116-A + 2121-G)**

### Welcome

Thank you for selecting this product! Your RF wireless optical mouse uses a newly developed RF wireless technology 2.4GHz that replaces the traditional wired mouse. You can use your wireless optical mouse freely and improve your efficiency and enjoy your beautiful life from the high technology. The receiver of this mouse can be put into its transmitter, and it is an outstanding design.

### Product Features

1. Radio frequency 2.4G, enjoy your freely wireless space
2. It has 65000 ID code, there is no interference even many mice being used at the same time.
3. Automatically save power sleeping functions, battery life be prolonged.
4. 5 buttons and free definition functions .

### Systems Compatibility

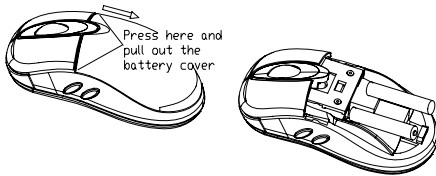
IBM PC and Win 98SE/Me/2000/XP, No need driver

### The Steps of Install Battery

1. Please prepare for two PCS new AAA alkaline batteries
2. Press the two sides of the mouse transmitter and pull the battery cover rearward (Please see the reference picture)
3. Please insert the batteries correctly according to the polarity marks of the battery grooves.
4. Pull the battery covers forward, when you hear "crack" sound which shows the battery cover is locked successfully. .

### Receiver Installation

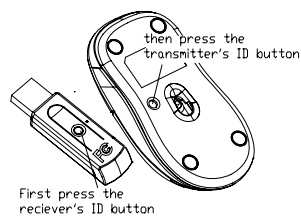
1. Please use extended cable, and put the receiver and transmitter on one desktop, in this way, you may have higher working efficiency.



2. You may connect the receiver directly with the USB connector.

### ID Setup

1. Please move the mouse near to the receiver
2. Press the ID button I the front of the receiver, the light of the receiver begins to flicker.
3. Press the ID button of the mouse bottom with some hard and acuate object within 10 seconds, the receiver light will flash very fast, a few seconds later it will be on which shows it is successfully to finish the digital transmission between the mouse and the receiver. You may start to use it.
4. Working distance: within 7-10 m.

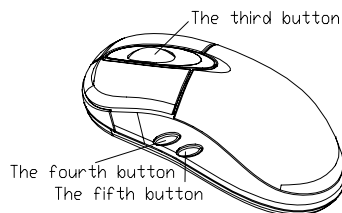


### user-defined buttons

after the installation of drive program, users can self define the buttons freely, as long as to press the button predefined, we can turn on the preset function. before use self defined buttons, please install drive program first, so that we can use software to define functions

### Installation of drive program

put the drive program disk into the CD-room, unfold the disk and run the file named setup.exe. The system will run files automatically and appear the picture below

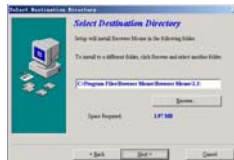




click "next" button



choose "5 Button Mouse" and click the "next" button



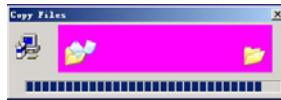
the system requires the address of installation, we can choose windows default and then click "next" button



system requires the catalog of installation, click "next" to use the windows default



information of copy files appears, click "next" to copy files



when copy finished, system requires to restart PC. choose "finish" and PC begins to restart



**settings of self-defined buttons**

after PC restarted, there is a icon appeared in taskbar, double click this icon and enter the picture of self-definition for scroll wheel and buttons

as this picture show, the upside is for setting mode of scroll wheel, the underside is for setting speed of scroll wheel

System default (Intel-Mouse) mode

Enhanced scroll mode

Scroll \*\* lines per scroll unit

Scroll one page scroll unit

Click "button setting" and enter the picture below



in this setting, the third, fourth, fifth buttons can be defined freely, click the little triangle at the right side can select functions below

Auto scroll  
Back space  
Close Application  
Connect To Internet  
Control Lock  
Control Panel  
Copy  
Cut  
Delete  
Double click  
Down  
Drag Lock  
End  
Enter  
Esc  
Explorer  
F1~F10  
Find computer  
Find File  
Home  
Horizontal wheel  
Internet Explorer Backward  
Internet Explorer forward  
Launch Default Browser  
Launch Default E-mail  
Left  
Maximize Window  
Middle Button  
Minimize All Windows  
Minimize windows  
Page Down  
Page Up  
Paste  
Redo  
Right  
Run  
Shift Lock  
Space  
Start Menu  
System Default  
System Help  
System Property  
Tab  
Undo  
Undo Minimize All Windows  
Universal Scroll  
Universal Zoom  
Up

**Attention Please**

1. Please don't make the mouse far away from the receiver in order to work more smoothly.
2. You'd better use the mouse on the white desk, in this way the batteries can be used longer time. Please remove the batteries if the mouse will not be used for a long time.
3. This mouse with save power sleeping functions, please press any key or scroll the wheel to wake up the mouse when it is sleeping.
4. You want to take off the mouse power, please continue to press the ID switch of the mouse bottom over 3 seconds. If you want to take on the power, please click the ID switch once again.
5. The optical mouse will not work freely on a smooth desk ,glass, any reflecting surface, 3D mouse pad.
6. No need to check the digital connection within 10 seconds when change the batteries, if more than that please according to the above way to re-operate.

**Federal Communication Commission Interference Statement**

1. This device complies with Part 15 of the FCC Rules. Operation is subject to the following two conditions:
  - (1) This device may not cause harmful interference, and
  - (2) This device must accept any interference received, including interference that may cause undesired operation.
2. Changes or modifications not expressly approved by the party responsible for compliance could void the user's authority to operate the equipment.