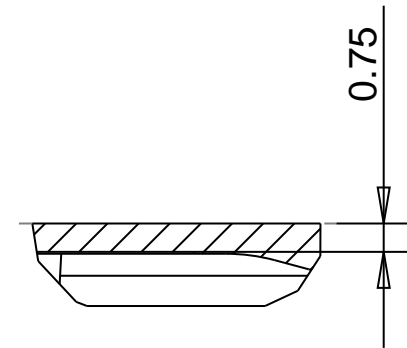
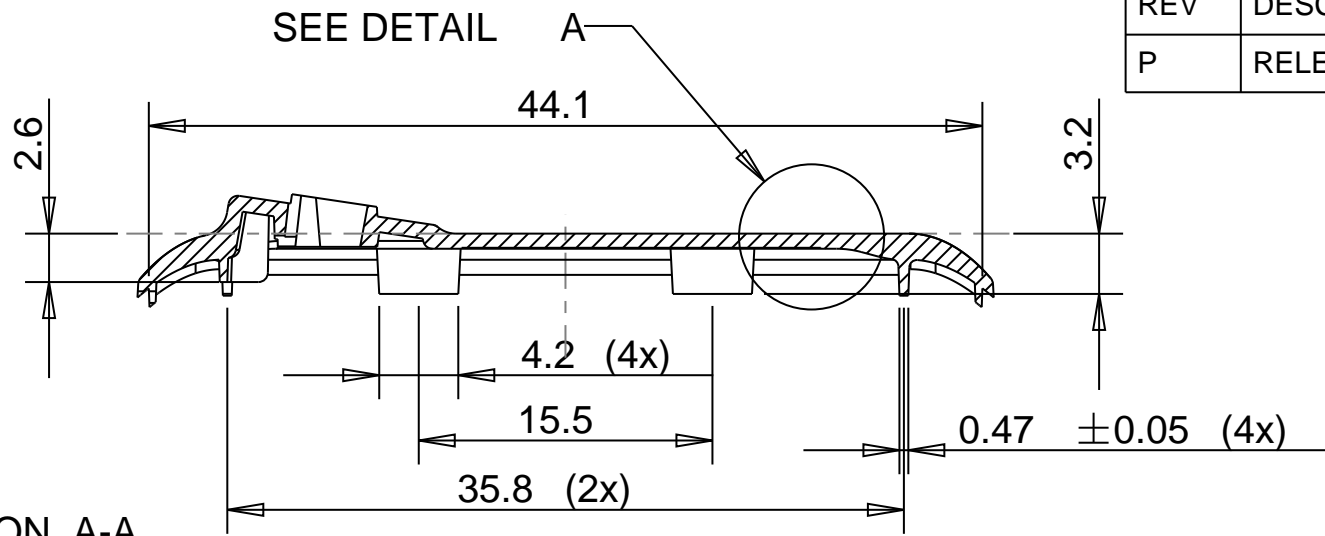
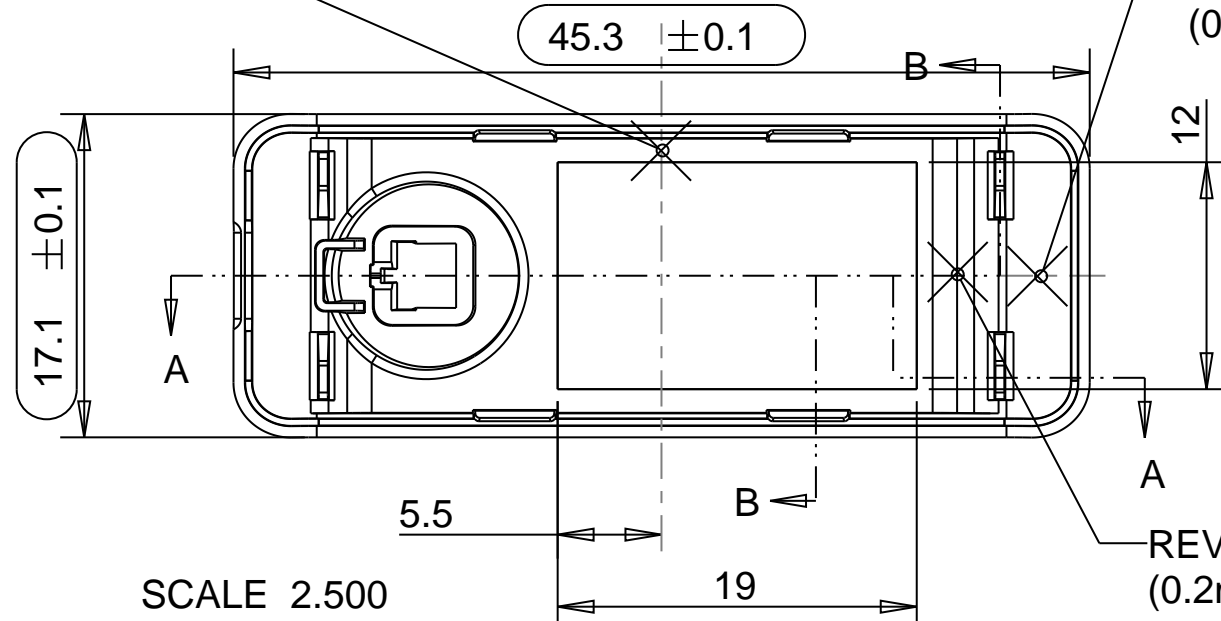
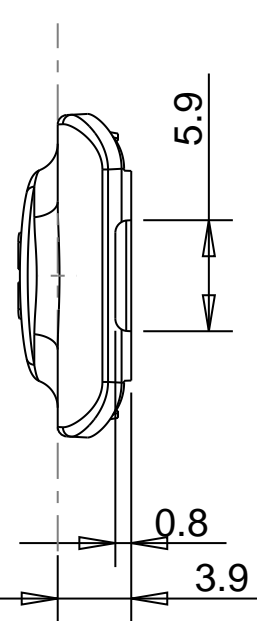


REV	DESCRIPTION OF CHANGE	ZONE	DCR	DATE
P	RELEASED FOR PRTOTYPE			20-07-08



DETAIL A
SCALE 5.000

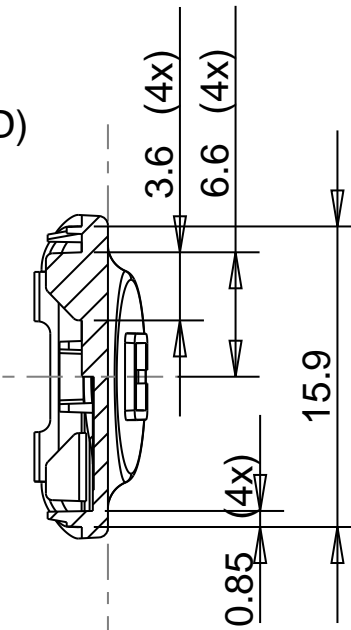
GATE POINT



SCALE 2.500

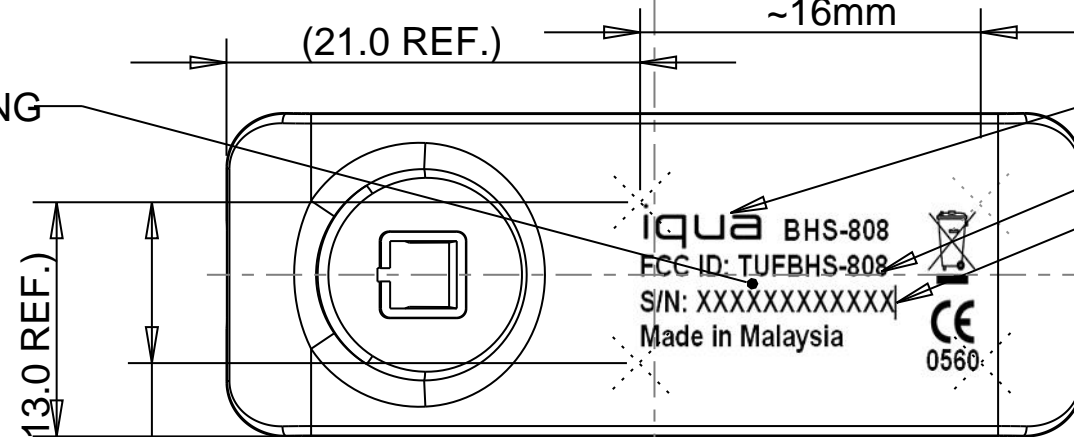
CAVITY NO:
(0.2mm DEPRESSED)

REVISION NO:
(0.2mm DEPRESSED)



SECTION B-B

LASER MARKING



LOGO-TEXT FONT -EUROSTILE EXTENDED TWO

TEXT FONT -ARIAL

S/N:MMYWWDLLSSSSSS
MM=MANUFACTURE CODE(FOR BALDA IT IS 10)
Y=YEAR,1 NUMBER(2005=5,2006=6,...)
WW=WEEK,2 NUMBERS(01-52)
D=DAY,1 NUMBER(MON=1,TUE=2,WED=3....SUN=7)
LL=PRODUCTION LINE,2NUMBERS
SSSSSS=SERIAL NUMBER,7 NUMBERS

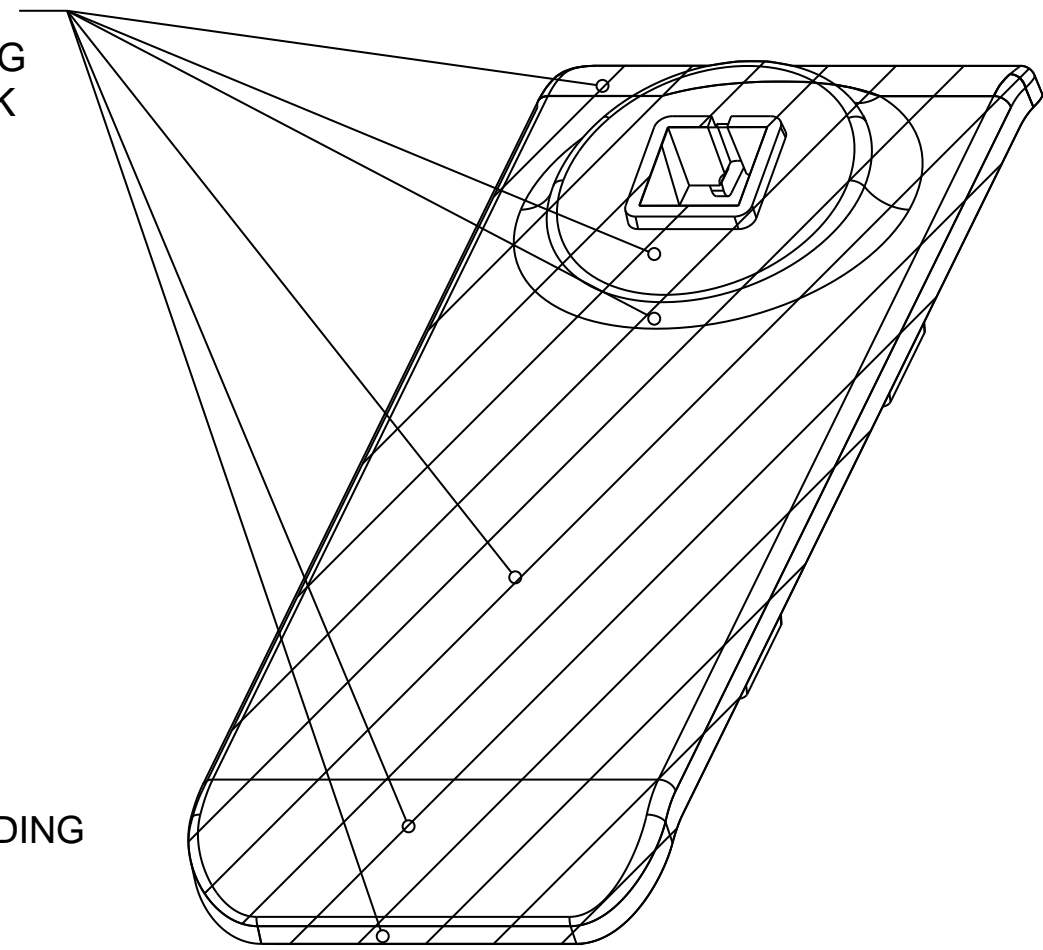
General Tolerances	
Also valid for referenced 3D model	
Basic	Tol.
(0) - 10	± 0.05
(10) - 25	± 0.07
(25) - 70	± 0.10
> 70	± 0.15
Angles :	± 0.5°

Treatment			
Material PC/ABS CYCOLOY C1100 HF			
Balda SOLUTION MALAYSIA		Prepared (Also Subject Responsible if Other)	
Drawing Rules		State RAJEEV In Work	
Tolerance SEE TOLERANCE TABLE		Doc Responsible/Approved B T LYE	
Reference		Date 20-07-08	
Scale 2.000		Rev P	
Units mm	Size A3	Product Name Housing, Bottom	
Document No. 15-1717-02			Sheet 1 of 2

CONFIDENTIAL

REV	DESCRIPTION OF CHANGE	ZONE	DCR	DATE
P	RELEASED FOR TOOLING			20-07-08

SURFACE TEXTURE- SPI A-2
 NEXTEL-SUEDE COATING
 COLOR-S139 DARK BLACK
 (REFER NOTES) COSMETIC REQ:TYPE 'B' SURFACE



NOTE:

- 1) THE 3D FILE 15-1717-01 IS LEADING FOR SHAPE AND DIMENSIONS
- 2) PARTS MUST BE COMPLY TO RoHS REQUIREMENTS
- 3) NO SHARP CORNER ALLOWED ,FILLET'S SHOWN SHARP MIN R0.05mm,R0.1mm MAX
- 3) DEGATE FLUSH WITH CONTOUR OR RECESSED 0.30 MAX.
- 4) FLASH 0.05 MAX.
- 5) EJECTOR PIN MARKS FLUSH WITH CONTOUR OR RECESSED 0.1mm MAX.
- 6) THE LOCATION OF INJECTION POINTS , EJECTOR PINS,PARTING LINES AND VENTING MUST BE APPROVED BY BSM BEFORE TOOL STARTS
- 7) UNLESS OTHERWISE SPECIFIED ALL OTHER SURFACE SHALL BE SP1-B1
- 8)VISIBLE SURFACE AFTER ASSEMBLY SHOULD COMPLY TO TYPE 'B' SURFACE ACCORDING TO BSM STANDARD
- 9) CAVITY NUMBER 1,2,3....
- 10) REVISION NUMBER ACCORDING TO DRAWING REVISION
- 11) SHOULD PASS ALL RELIABILITY TEST ACCORDING TO BALDA STANDARD
- 12) IQC DIMENSIONS INDICATED IN ROUNDED BOX
- 13) CPK 1.67 ABOVE DURING PSA AND 1.33 AND ABOVE DURING SPVR
- 14) PAINTING DETAILS
 - a) PRIMER-NEXTEL-PRIMER 5523 INCL HARDENER 5524
 - b) TOP COAT- NEXTEL- SUEDE-COATING 3101 INCL HARDENER 6018(S139 DARK BLACK)

General Tolerances	
Also valid for referenced 3D model	
Basic	Tol.
(0) - 10	± 0.05
(10) - 25	± 0.07
(25) - 70	± 0.10
> 70	± 0.15
Angles :	± 0.5°

Treatment			
Material PC/ABS CYCOLOY C1100 HF (BLACK)			
Balda SOLUTION MALAYSIA		Prepared (Also Subject Responsible If Other)	
		RAJEEV	State In Work
Drawing Rules		Doc Responsible/Approved	Date 20-07-08
Tolerance SEE TOLERANCE TABLE		Product Name HOUSING,BOTTOM	
Reference		Document No. 15-1717-02	Sheet 2 of 2
Scale 2.000	Units mm	Size A3	

CONFIDENTIAL