

FCC/IC identifier marking of cB-0928-02
FCC ID: TTY092802
IC: 5676B-092802

The FCC/IC identifier marking of Bluetooth module cB-0928-02 is situated on the Primary side of the module. The marking is etched into the surface of the shield box.

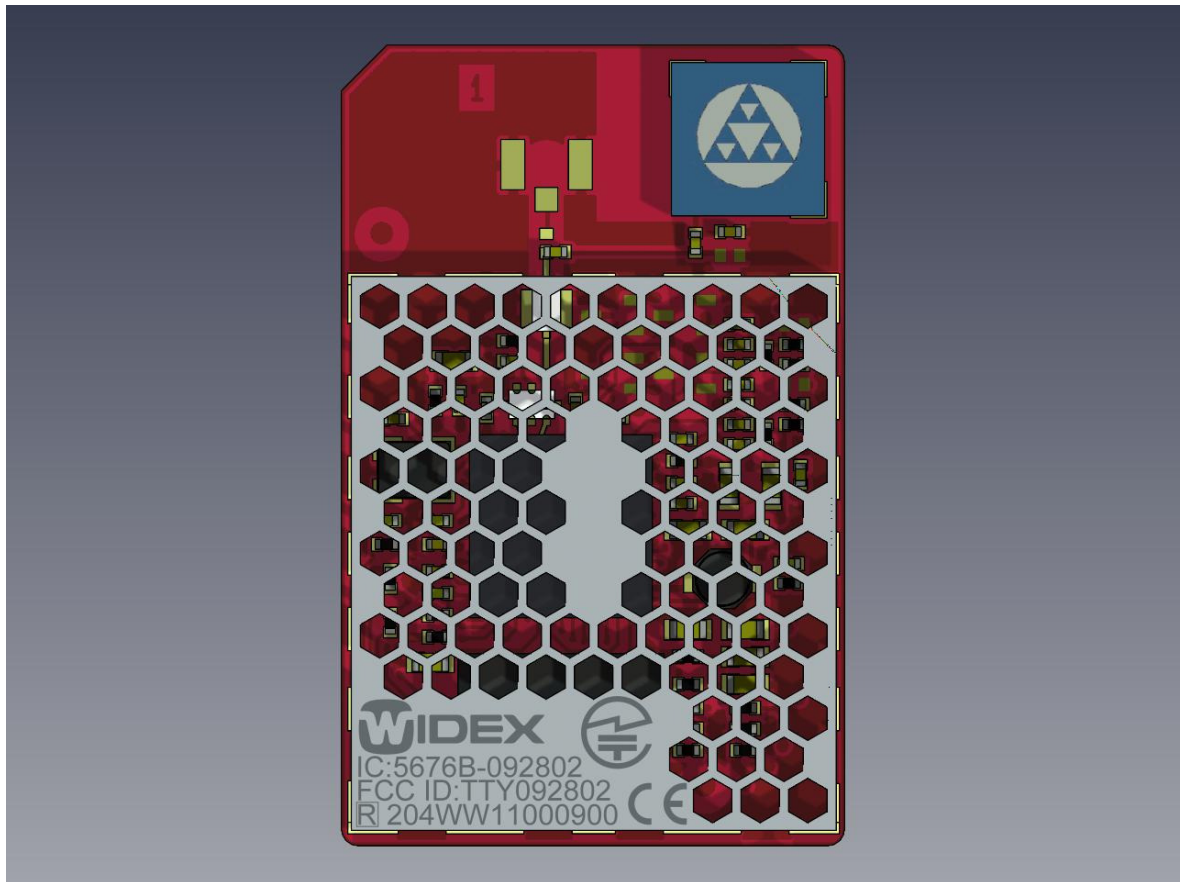


Figure 1 cB-0928-02 FCC/ IC identifier etched into the surface of the shieldbox

The manufacturer name of the cB-0928-02 module is found on the secondary side printed in the solder mask.

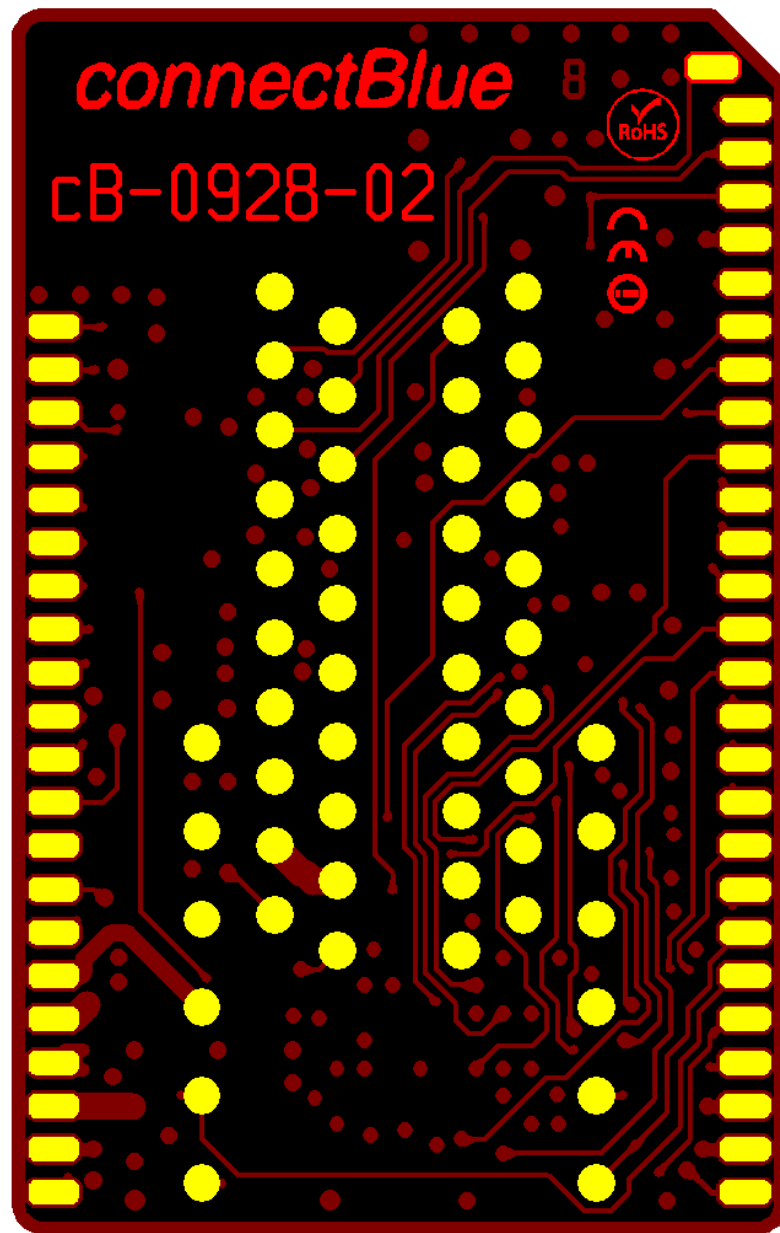


Figure 2 name of manufacturer printed on secondary side

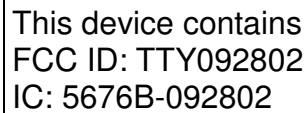
2011-03-02

An auxiliary label will be provided for systems using the module where the original label not will be visible when the module is installed.

Instructions on how to attach the auxiliary label in compliance with the modular approval guidelines developed by the FCC will be provided.

The instructions will call attention to place the auxiliary label on an exterior surface of the device such that it will be visible upon inspection.

The auxiliary label will have at least the information as shown in the figure below



This device contains
FCC ID: TTY092802
IC: 5676B-092802