

公司名稱:佳邦科技股份有限公司

地址:350 苗栗縣竹南鎮公義里 11 鄰科義街 11 號

品名 : RFFPA261138IMAB401

客戶 : 迪芬尼 Seoul


客戶料號 : T690800041400

1. Explanation of part number :

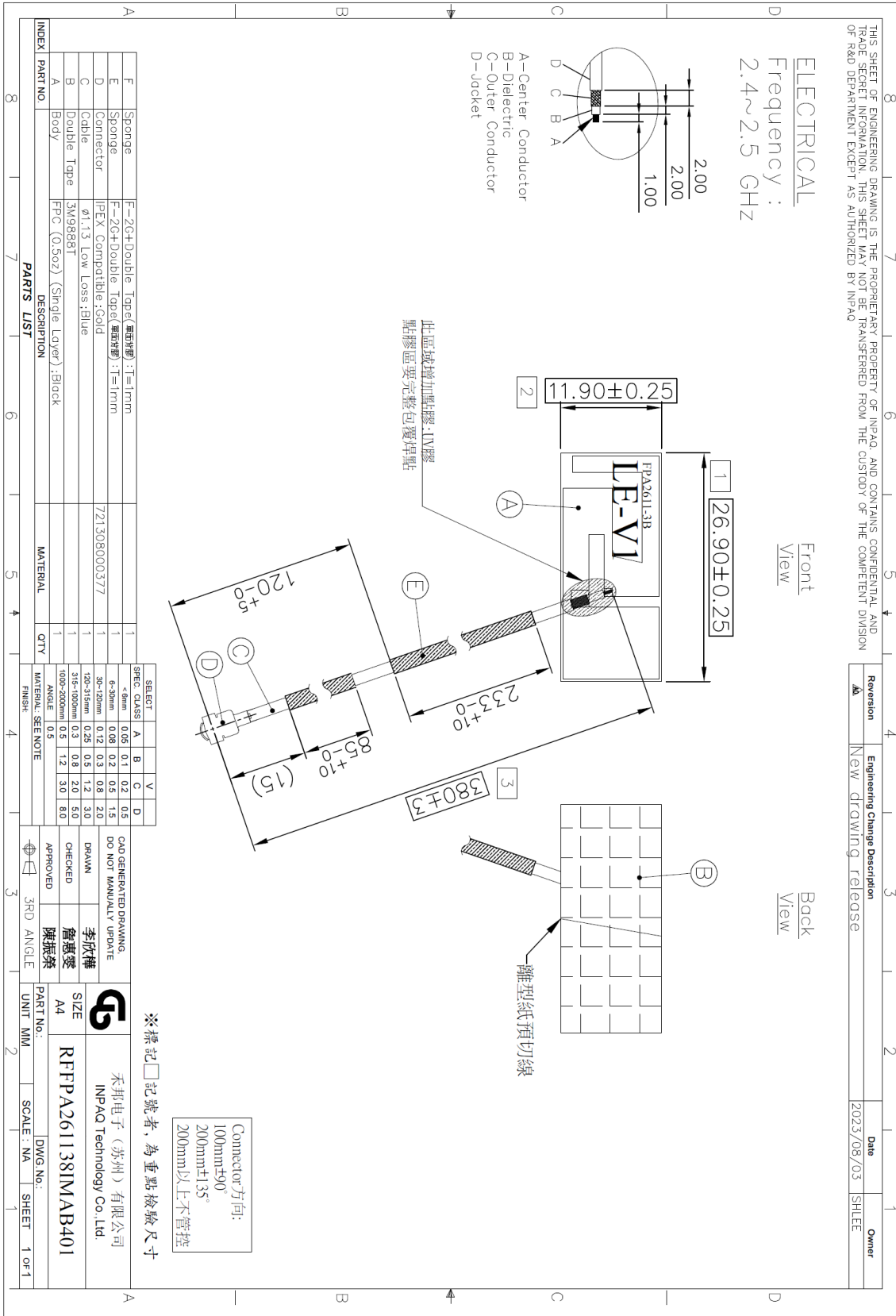
RF	FPA	2611	38	I	M	A	B	4	01
Type Code	Product Code	PCB Dimension (Unit: mm)	Cable Length (unit: cm)	Connector Brand	Type of Connector	Application	Project status	Wire Diameter	Project
RF Device	FPC Antenna	Per 2 digits of length, width e.g.: 2924 Length 29.6mm, Width 24.7mm	2 digits for cable length e.g.: 40 Length 40cm	A: N C:MCX D:IPEX III E: IPEX IV F: IPEX A13 H: Hirose I: IPEX M: MMCX S: SMA T: TNC U:MURATA N: None	A: Reverse Female B: Reverse Male F: Female M: Male N: None	0: 0GHz 3: 3GHz 5: 5GHz 6: 6GHz A: 2.4GHz ISM band B: GSM 900/1800 dual band G: GPS band L: 2.4/5.2/5.8 GHz tri-band N: NFC T: LTE band W: WCDMA band	B: MP T:During Test X: Pile Run	0:None 1:∅ 0.81 2:∅ 1.32 3:∅ 1.13 4:Low Loss ∅ 1.13 5:∅ 0.5 6:RG316 7: ∅ 1.37 8:RG178 9:Low Loss ∅ 1.37	01~99 series number

2. Electrical Specification :

Item	Specification
Working Frequency Range	2.4 ~ 2.5 GHz
Return Loss	-10 dB(Max)
Gain(peak)	1.18 dBi
VSWR	< 2.0
Impedance	50 Ohm Nominal
Radiation	Omni-directional
Polarization	Linear Vertical
Operation Temperature	-20°C ~ +65°C

UNLESS OTHER SPECIFIED TOLERANCES ON : X = N/A X.X = N/A X.XX = N/A ANGLES = N/A HOLEDIA = N/A		 INPAQ TECHNOLOGY CO., LTD.	
SCALE : N/A	UNIT : mm		
DRAWN BY : 李欣樺	CHECKED BY : 詹惠雯	THIS DRAWINGS AND SPECIFICATIONS ARE THE PROPERTY OF INPAQ TECHNOLOGY CO.,LTD.AND SHALL NOT BE REPRODUCED OR USED AS THE BASIS FOR THE MANUFACTURE OR SALE OF APPARATUS OR DEVICES WITHOUT PERMISSION	
DESIGNED BY : 黃瑞郎	APPROVED BY : 陳振榮		
TITLE : RFFPA261138IMAB401		DOCUMENT NO.	SPEC REV. A0

3. Antenna Drawing :



UNLESS OTHER SPECIFIED TOLERANCES ON :
X=N/A X.X=N/A X.XX=N/A
ANGLES=N/A HOLEDIA=N/A



INPAQ TECHNOLOGY CO., LTD.

SCALE : N/A

UNIT : mm

DRAWN BY : 李欣樺

CHECKED BY : 詹惠愛

DESIGNED BY : 黃瑞郎

APPROVED BY : 陳振榮

THIS DRAWINGS AND SPECIFICATIONS ARE THE PROPERTY OF INPAQ TECHNOLOGY CO.,LTD.AND SHALL NOT BE REPRODUCED OR USED AS THE BASIS FOR THE MANUFACTURE OR SALE OF APPARATUS OR DEVICES WITHOUT PERMISSION

TITLE : RFFPA261138IMAB401

DOCUMENT NO.

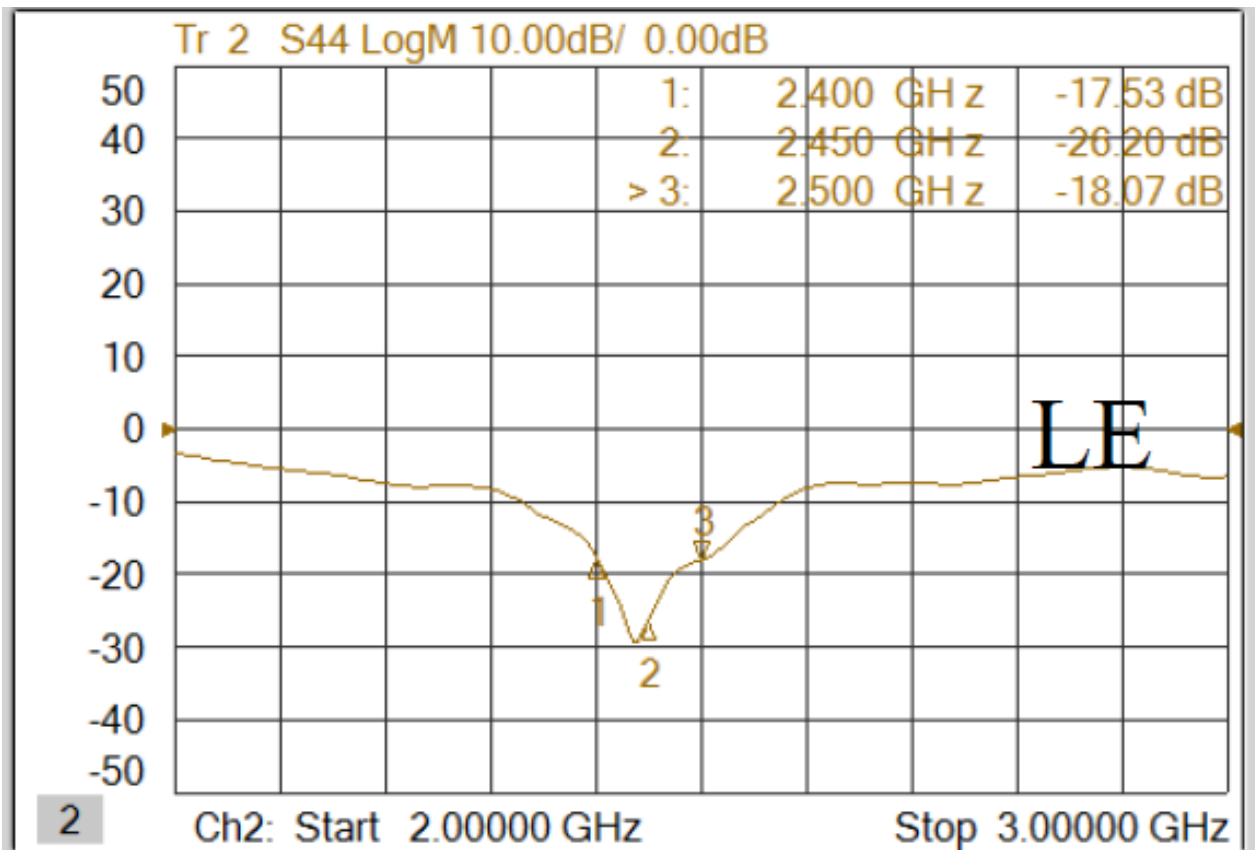
SPEC REV. A0


4. Performance Report :

ELECTRICAL CHARACTERISTICS

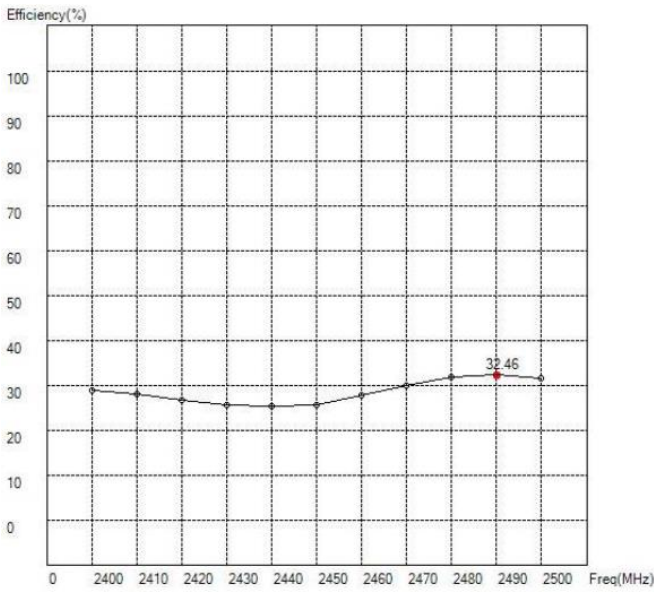
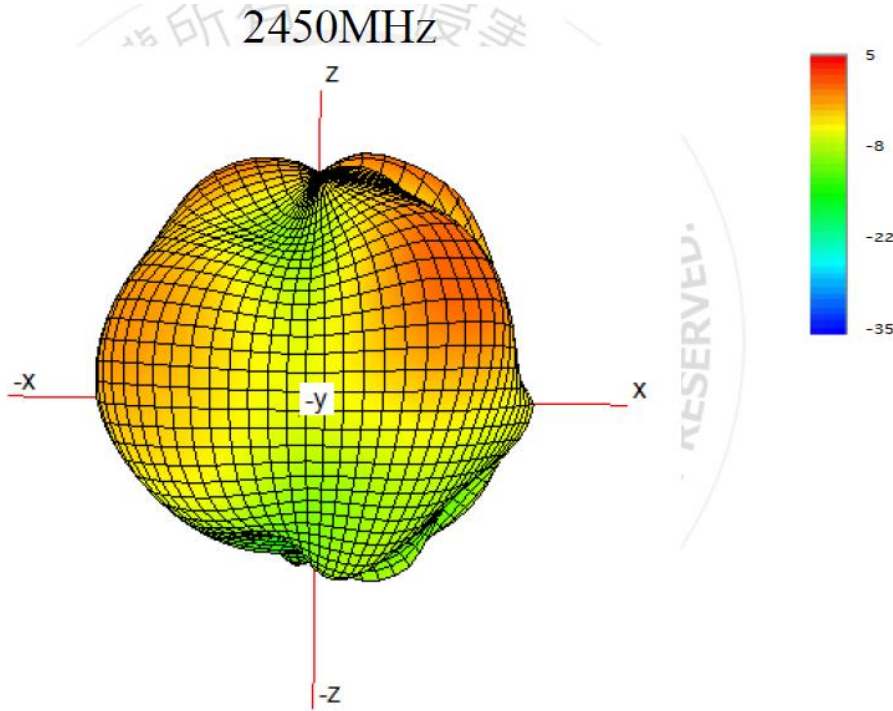
Retune Loss

LE

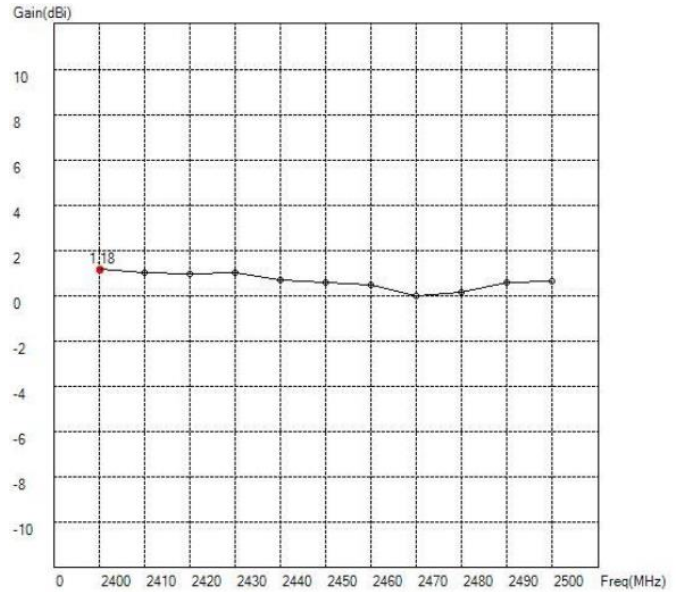


UNLESS OTHER SPECIFIED TOLERANCES ON : X=N/A X.X=N/A X.XX=N/A ANGLES=N/A HOLEDIA=N/A		 <p>INPAQ TECHNOLOGY CO., LTD.</p>	
SCALE : N/A	UNIT : mm		
DRAWN BY : 李欣樺	CHECKED BY : 詹惠雯	THIS DRAWINGS AND SPECIFICATIONS ARE THE PROPERTY OF INPAQ TECHNOLOGY CO.,LTD.AND SHALL NOT BE REPRODUCED OR USED AS THE BASIS FOR THE MANUFACTURE OR SALE OF APPARATUS OR DEVICES WITHOUT PERMISSION	
DESIGNED BY : 黃瑞郎	APPROVED BY : 陳振榮		
TITLE : RFFPA261138IMAB401		DOCUMENT NO.	SPEC REV. A0

Antenna Efficiency & Peak Gain



Maximum Efficiency at 2490 MHz : 32.46%



Maximum Peak Gain at 2400MHz : 1.18dBi

UNLESS OTHER SPECIFIED TOLERANCES ON :
 X=N/A X.X=N/A X.XX=N/A
 ANGLES=N/A HOLEDIA=N/A



INPAQ TECHNOLOGY CO., LTD.

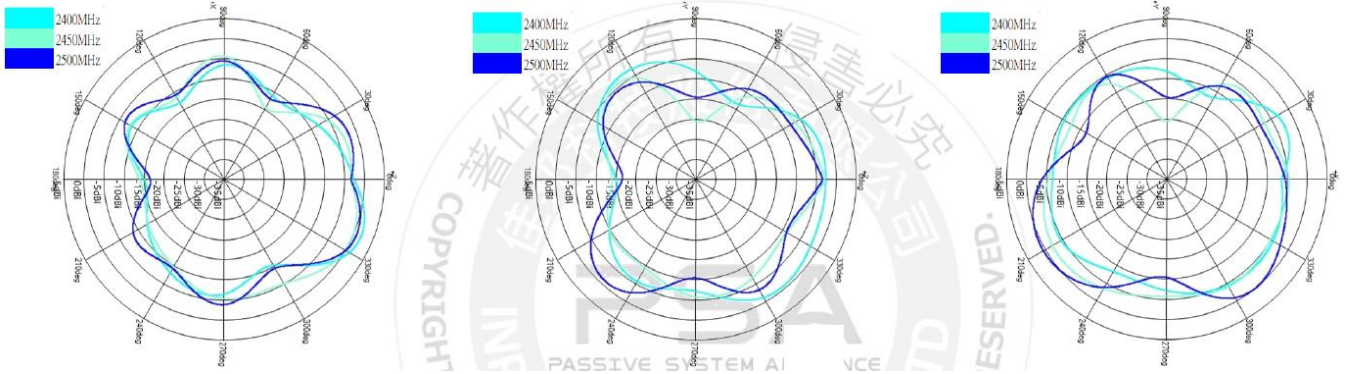
SCALE : N/A UNIT : mm
 DRAWN BY : 李欣樺 CHECKED BY : 詹惠雯
 DESIGNED BY : 黃瑞郎 APPROVED BY : 陳振榮

THIS DRAWINGS AND SPECIFICATIONS ARE THE PROPERTY OF INPAQ TECHNOLOGY CO.,LTD.AND SHALL NOT BE REPRODUCED OR USED AS THE BASIS FOR THE MANUFACTURE OR SALE OF APPARATUS OR DEVICES WITHOUT PERMISSION

TITLE : RFFPA261138IMAB401

DOCUMENT NO. SPEC REV. A0

RADIATION PATTERN



Frequency [MHz]	ZX plane		ZY plane		XY plane	
	Max Value [dB]	Average [dB]	Max Value [dB]	Average [dB]	Max Value [dB]	Average [dB]
2400	1.18	-5.02	-1.18	-4.30	-3.16	-5.86
2450	0.05	-5.04	-2.83	-6.56	-2.14	-5.47
2500	0.09	-4.81	-2.57	-5.59	0.52	-4.34

UNLESS OTHER SPECIFIED TOLERANCES ON :
 X=N/A X.X=N/A X.XX=N/A
 ANGLES=N/A HOLEDIA=N/A



INPAQ TECHNOLOGY CO., LTD.

SCALE : N/A

UNIT : mm

DRAWN BY : 李欣樺

CHECKED BY : 詹惠雯

DESIGNED BY : 黃瑞郎

APPROVED BY : 陳振榮

THIS DRAWINGS AND SPECIFICATIONS ARE THE PROPERTY OF INPAQ TECHNOLOGY CO.,LTD.AND SHALL NOT BE REPRODUCED OR USED AS THE BASIS FOR THE MANUFACTURE OR SALE OF APPARATUS OR DEVICES WITHOUT PERMISSION

TITLE : RFFPA261138IMAB401

DOCUMENT NO.

SPEC REV.
A0