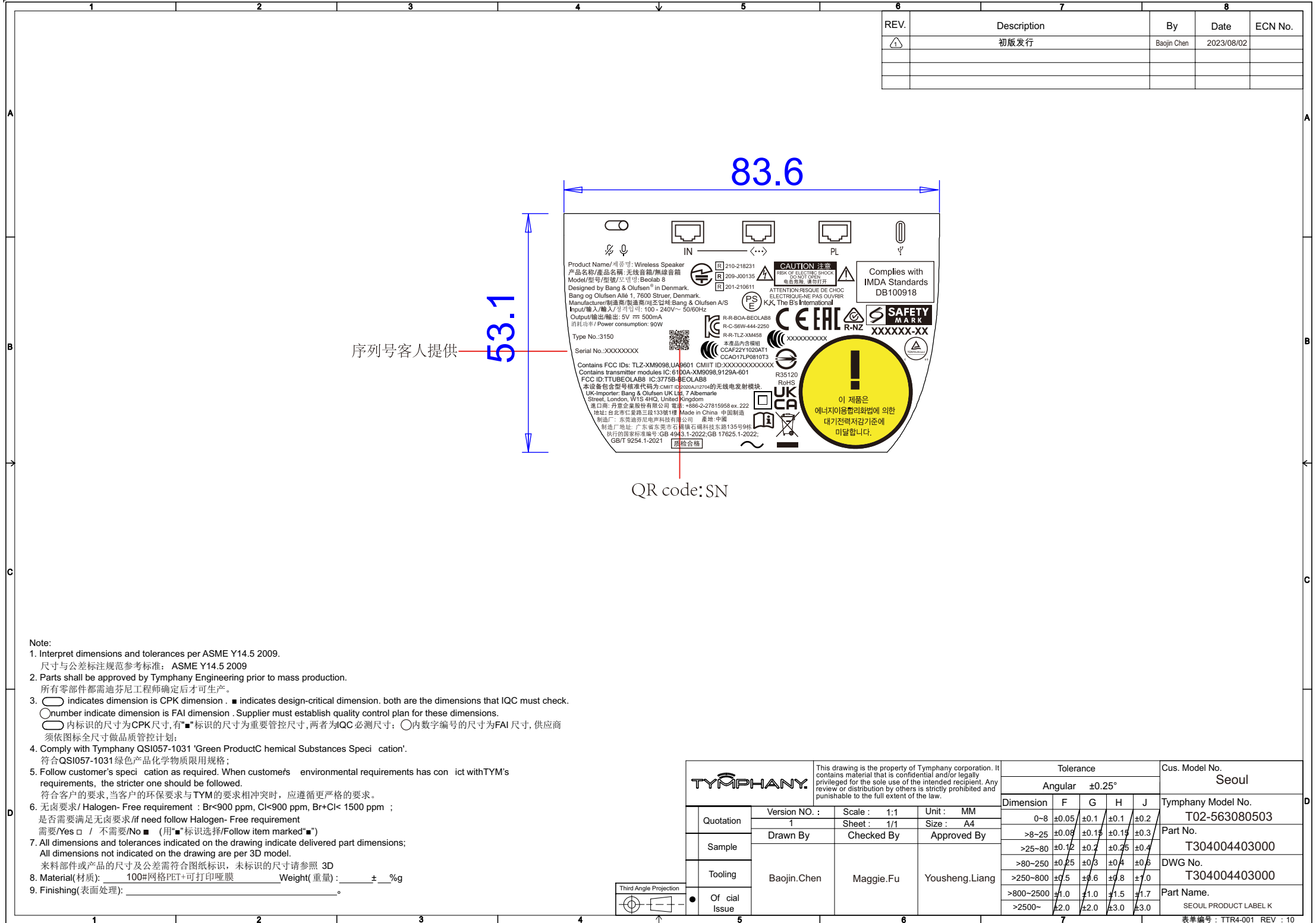


REV.	Description	By	Date	ECN No.
△	初版发行	Baojin Chen	2023/08/02	



序列号客人提供

QR code: SN

- Note:
- Interpret dimensions and tolerances per ASME Y14.5 2009.
尺寸与公差标注规范参考标准: ASME Y14.5 2009
 - Parts shall be approved by Tymphony Engineering prior to mass production.
所有零部件都需迪芬尼工程师确定后方可生产。
 - indicates dimension is CPK dimension . ■ indicates design-critical dimension. both are the dimensions that IQC must check.
○ number indicate dimension is FAI dimension . Supplier must establish quality control plan for these dimensions.
○ 内标识的尺寸为CPK尺寸,有"■"标识的尺寸为重要管控尺寸,两者为IQC必测尺寸; ○内数字编号的尺寸为FAI尺寸,供应商须依图全尺寸做品质管控计划;
 - Comply with Tymphony QSI057-1031 'Green Product Chemical Substances Specification'.
符合QSI057-1031绿色产品化学物质限用规格;
 - Follow customer's specification as required. When customer's environmental requirements has conflict with TYM's requirements, the stricter one should be followed.
符合客户的要求,当客户的环保要求与TYM的要求相冲突时,应遵循更严格的要求。
 - 无卤要求/ Halogen- Free requirement : Br<900 ppm, Cl<900 ppm, Br+Cl< 1500 ppm ;
是否需要满足无卤要求/if need follow Halogen- Free requirement
需要/Yes □ / 不需要/No ■ (用"■"标识选择/Follow item marked"■")
 - All dimensions and tolerances indicated on the drawing indicate delivered part dimensions;
All dimensions not indicated on the drawing are per 3D model.
来料部件或产品的尺寸及公差需符合图纸标识,未标识的尺寸请参照 3D
 - Material(材质): 100#网格PET+可打印哑膜 Weight(重量): _____ ± ____%
 - Finishing(表面处理): _____。

TYMPHANY				Tolerance					Cus. Model No.	
				Angular ±0.25°					Seoul	
Quotation	Version NO. : 1	Scale : 1:1	Unit : MM	Dimension	F	G	H	J	Tymphony Model No.	
Sheet : 1/1 <td>Drawn By</td> <td>Checked By</td> <td>Size : A4</td> <td>0-8</td> <td>±0.05</td> <td>±0.1</td> <td>±0.1</td> <td>±0.2</td> <td>T02-563080503</td>	Drawn By	Checked By	Size : A4	0-8	±0.05	±0.1	±0.1	±0.2	T02-563080503	
Sample	Baojin.Chen	Maggie.Fu	Approved By	>8-25	±0.05	±0.15	±0.15	±0.3	Part No.	
Tooling				>25-80	±0.12	±0.2	±0.25	±0.4	T304004403000	
Official Issue				>80-250	±0.25	±0.3	±0.4	±0.6	DWG No.	
				>250-800	±0.5	±0.6	±0.8	±1.0	T304004403000	
				>800-2500	±1.0	±1.0	±1.5	±1.7	Part Name.	
				>2500~	±2.0	±2.0	±3.0	±3.0	SEOUL PRODUCT LABEL K	