

PAGE1: Notes, Revision History

PAGE2: Digital_Interfaces

PAGE3: RF_Interface

PAGE4: DDR2

PAGE5: Misc. Interfaces

PAGE6: 1000 BaseT_Ethernet_PHY

PAGE7: 10/100 BaseT_Interfaces

PAGE8: PoE

PAGE9: Power_Supplies

PAGE10: 2.4GHz RF

PAGE11: 5GHz RF

PAGE12: Exalt SYNC

PAGE13: Goldfinger

REVISIONS HISTORY			
ISS	DESCRIPTION	DATE	APVD
1.0	INITIAL RELEASE, REVISION 2 PCB	03/13/2013	



BARCODE1
PartNumber
200481



BARCODE2
SN
200482



MAC1
MAC address
200483



MAC2
MAC address
200483



DOC1
ASSEMBLY DWG
102333



DOC2
FAB
208189



DOC3
SCHEMATIC
102334



5GHz
802.11N Wireless
Bridge / Access
Point
207483

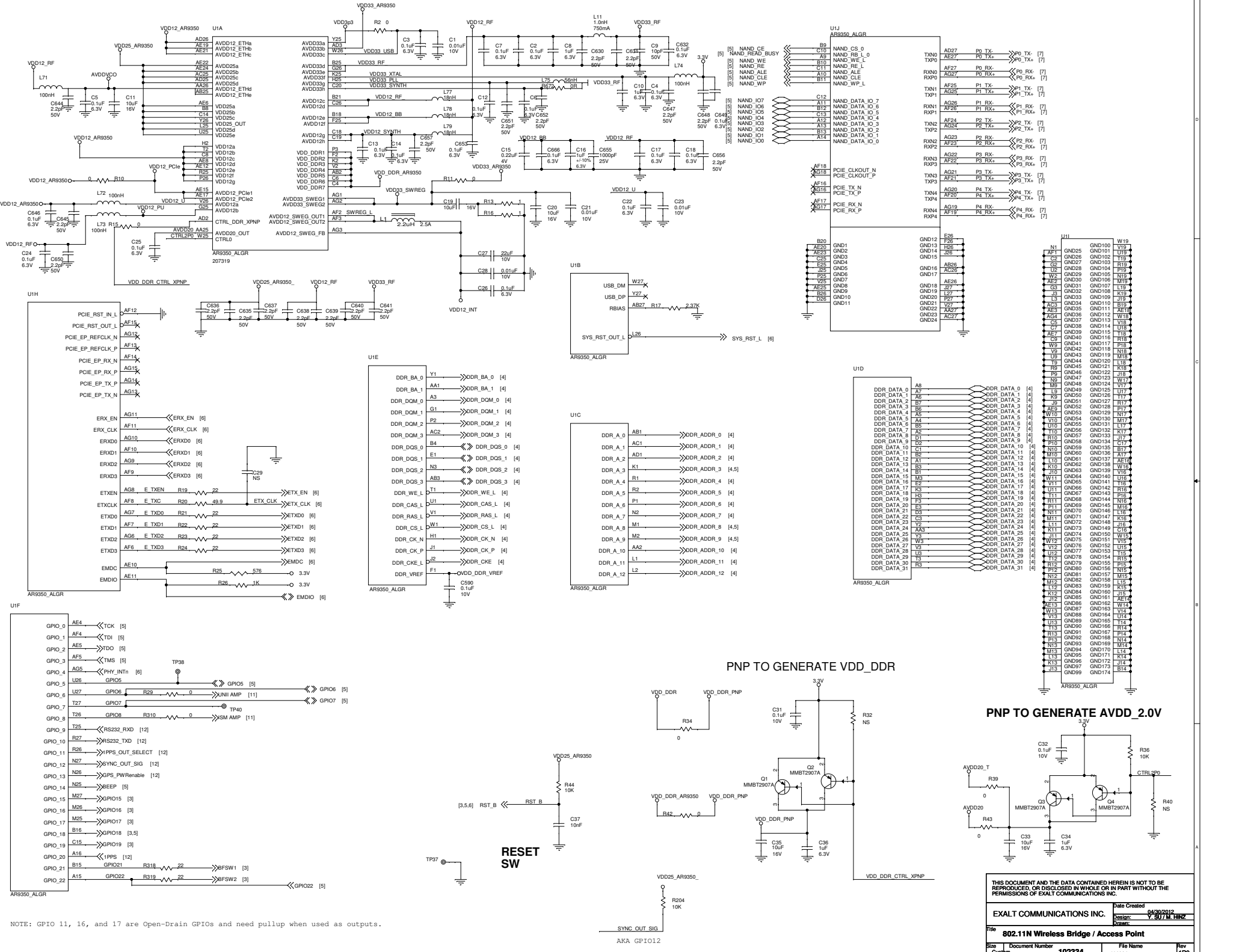


2.4GHz
802.11N Wireless
Bridge / Access
Point
207482

Internal use only

Exalt Communications
confidential and proprietary

THIS DOCUMENT AND THE DATA CONTAINED HEREIN IS NOT TO BE REPRODUCED, OR DISCLOSED IN WHOLE OR IN PART WITHOUT THE PERMISSIONS OF EXALT COMMUNICATIONS INC.			
EXALT COMMUNICATIONS INC.		Date Created	04/30/2012
		Design:	Y. SU / M. HINZ
		Drawn:	Y. SU / M. HINZ
Title 802.11N Wireless Bridge / Access Point			
Size	Document Number	File Name	Rev
C	102334	102334	1P0
Date: Friday, April 05, 2013		Sheet	1 of 13



NOTE: GPIO 11, 16, and 17 are Open-Drain GPIOs and need pullup when used as outputs.

THIS DOCUMENT AND THE DATA CONTAINED HEREIN IS NOT TO BE REPRODUCED, OR DISCLOSED IN WHOLE OR IN PART WITHOUT THE PERMISSIONS OF EXALT COMMUNICATIONS INC.

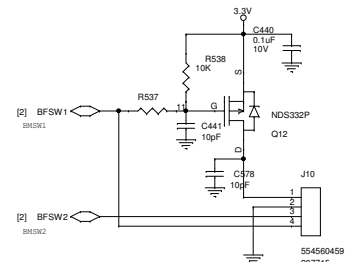
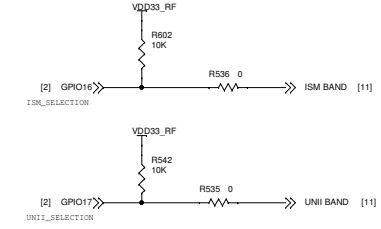
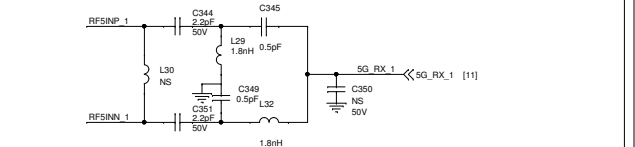
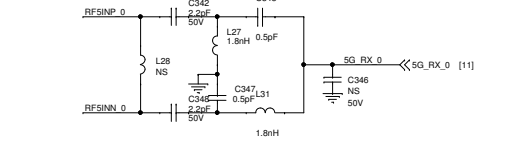
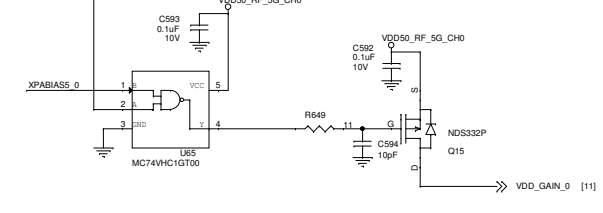
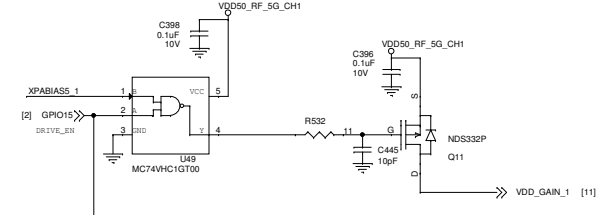
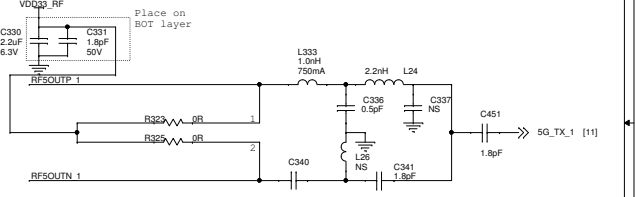
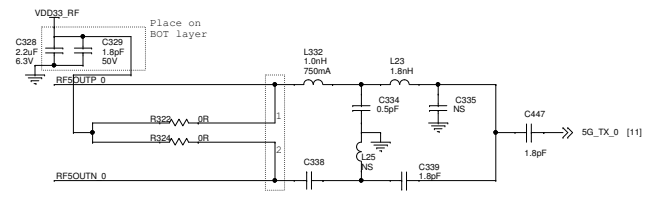
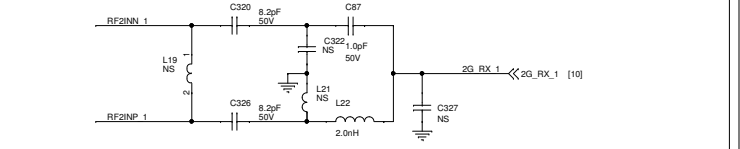
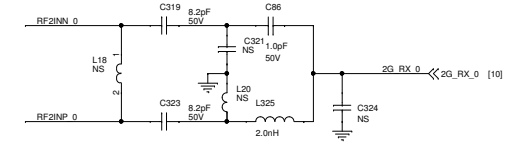
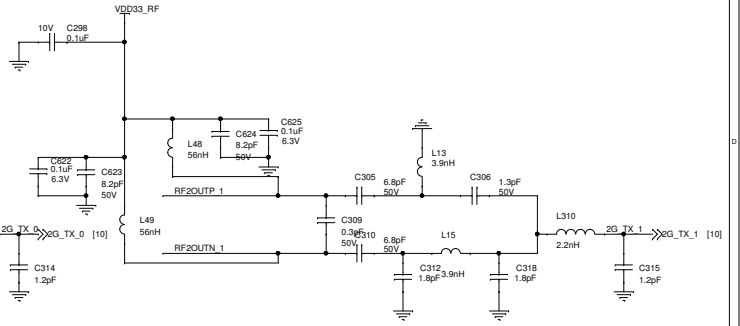
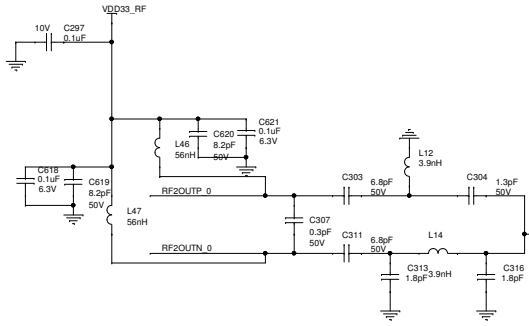
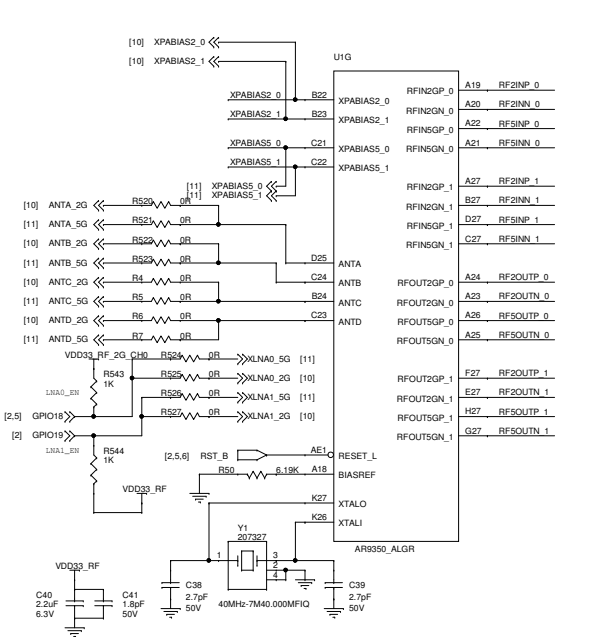
EXALT COMMUNICATIONS INC. Date Created: 04/30/2012
Design: V_SU/M_HHZ

File: **802.11N Wireless Bridge / Access Point**

Size: Document Number: 102334
File Name: 102334

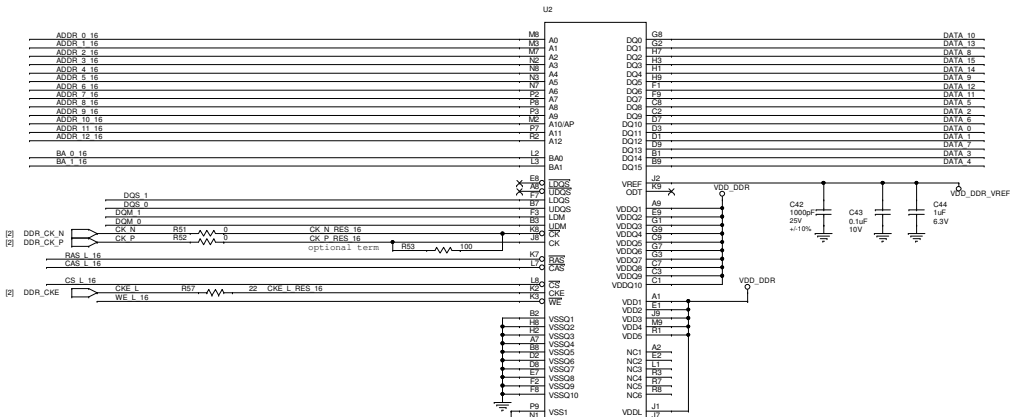
Rev: 1 F0

Date: Friday, April 05, 2013
Sheet: 2 of 13

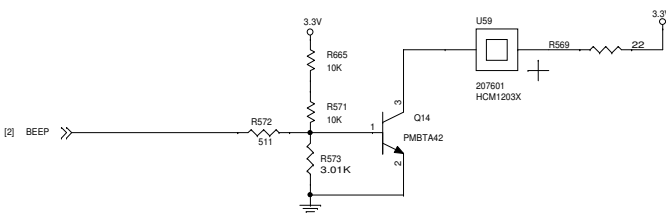
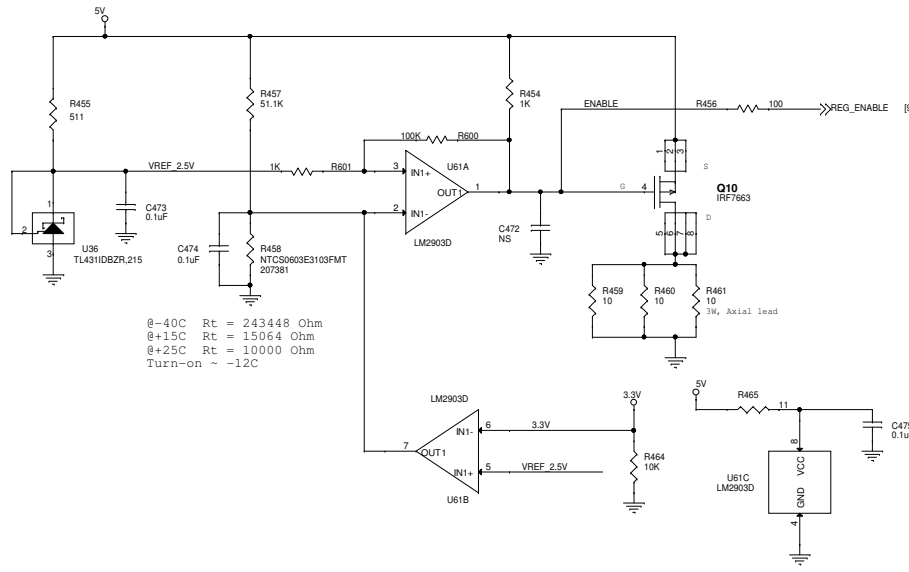
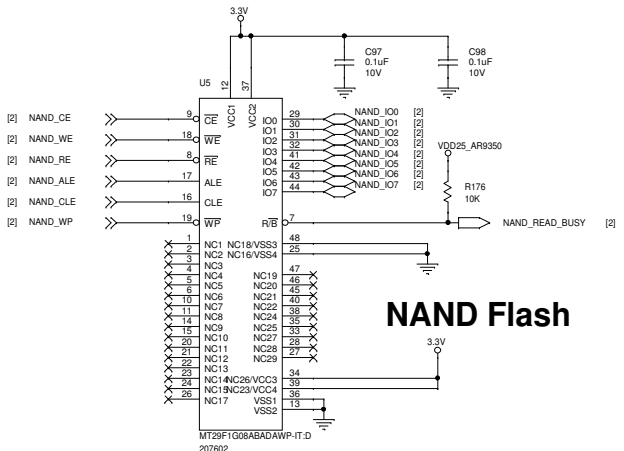
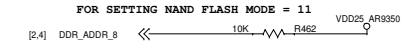
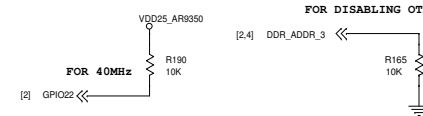
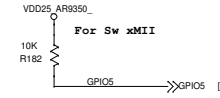
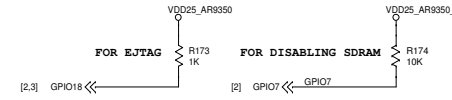
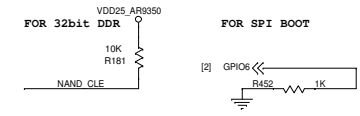
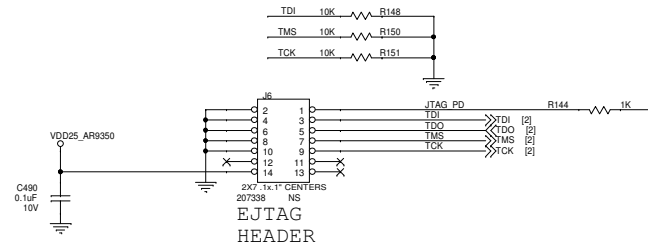


THIS DOCUMENT AND THE DATA CONTAINED HEREIN IS NOT TO BE REPRODUCED, OR DISCLOSED IN WHOLE OR IN PART WITHOUT THE PERMISSIONS OF EXALT COMMUNICATIONS INC.

File	802.11N Wireless Bridge / Access Point
Size	102334
Document Number	102334
Date Created	04/30/2012
Design	Y_SU/M_HHZ
Drawn	Y_SU/M_HHZ
Rev	1P0
Date:	Friday, April 05, 2013
Sheet	3 of 13

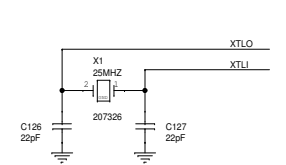
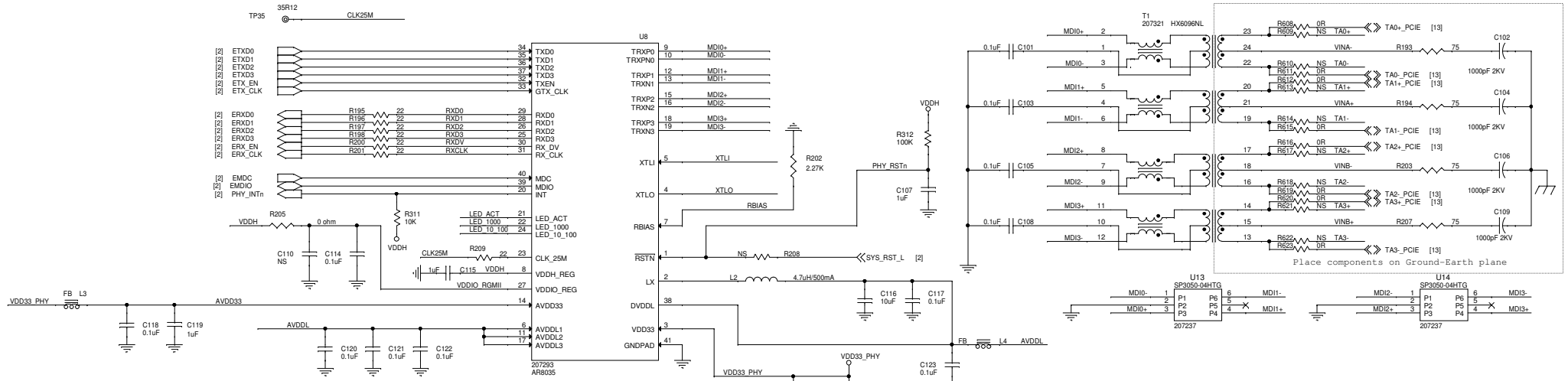


Boot Strap Options

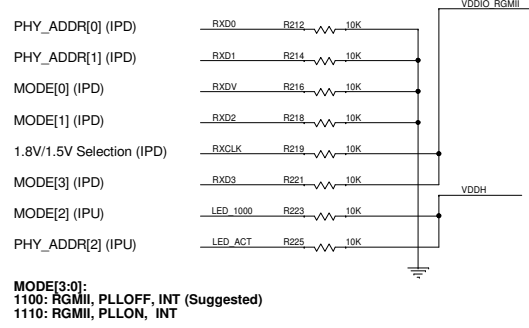


THIS DOCUMENT AND THE DATA CONTAINED HEREIN IS NOT TO BE REPRODUCED, OR DISCLOSED IN WHOLE OR IN PART WITHOUT THE PERMISSIONS OF EXALT COMMUNICATIONS INC.

EXALT COMMUNICATIONS INC.		Date Created	04/30/2012
		Design:	Y. SUJ/M. HINZ
		Drawn:	Y. SUJ/M. HINZ
802.11N Wireless Bridge / Access Point			
Size	Document Number	File Name	Rev
C	102334	102334	1P0
Date:	Friday, April 05, 2013	Sheet	5 of 13



Power-on Strapping Pins



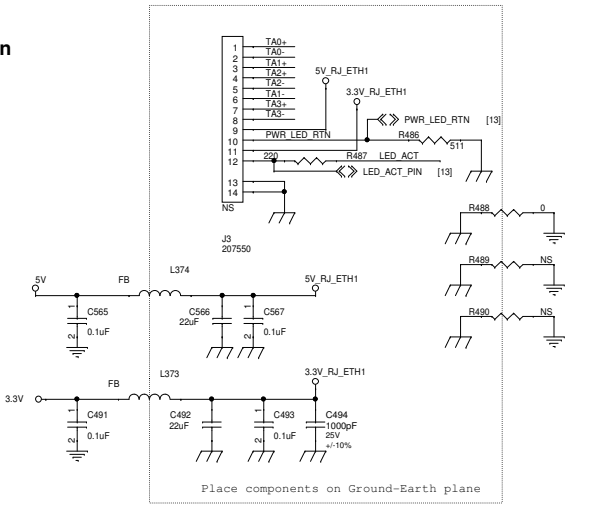
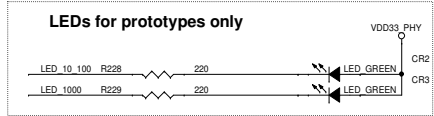
MODE[3:0]:
1100: RGMII, PLLOFF, INT (Suggested)
1110: RGMII, PLLON, INT

R21: place closed to PHY side

RGMII I/O Voltage Selection

I/O	R21	C53	C28	RXCLK
2.5V	0	0.1u	1u	PU or PD
1.5V	NC	1u	0.1u	PD
1.8V	NC	1u	0.1u	PU

2.5V is illustrated in schematic



THIS DOCUMENT AND THE DATA CONTAINED HEREIN IS NOT TO BE REPRODUCED, OR DISCLOSED IN WHOLE OR IN PART WITHOUT THE PERMISSIONS OF EXALT COMMUNICATIONS INC.

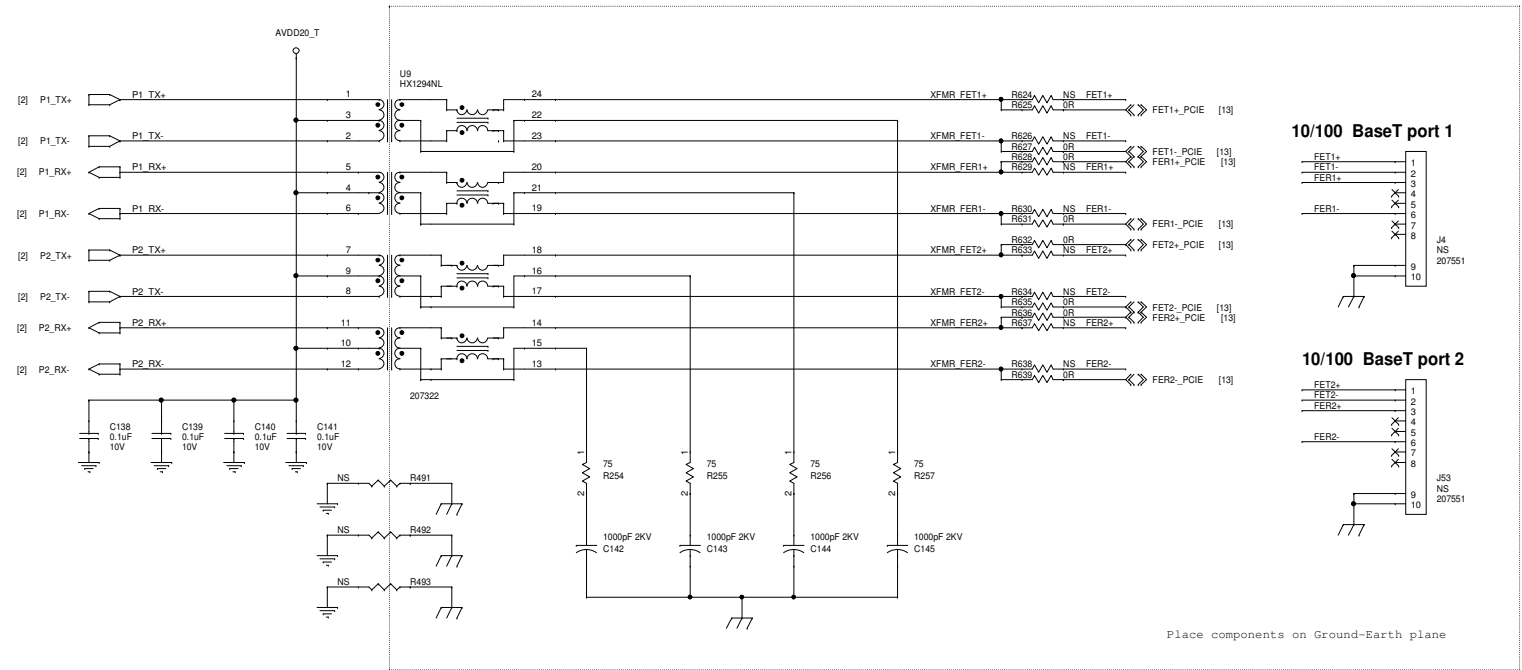
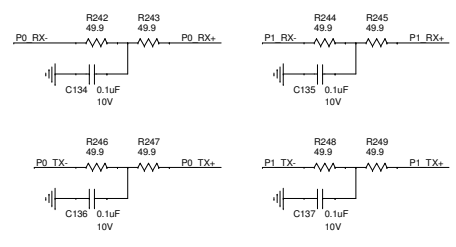
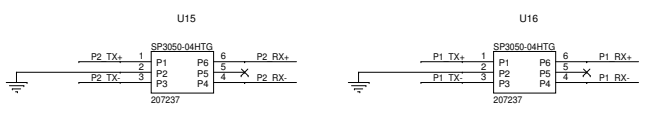
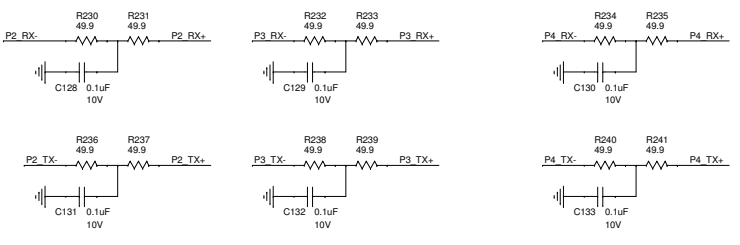
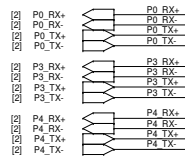
Date Created: 04/30/2012
 Design: Y. SU / M. HINZ
 Drawn: Y. SU / M. HINZ

EXALT COMMUNICATIONS INC.

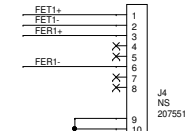
File Name: **802.11N Wireless Bridge / Access Point**

Size C	Document Number: 102334	File Name: 102334	Rev: 1P0
--------	--------------------------------	-------------------	----------

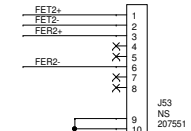
Date: Friday, April 05, 2013 Sheet: 6 of 13



10/100 BaseT port 1



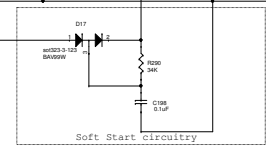
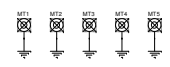
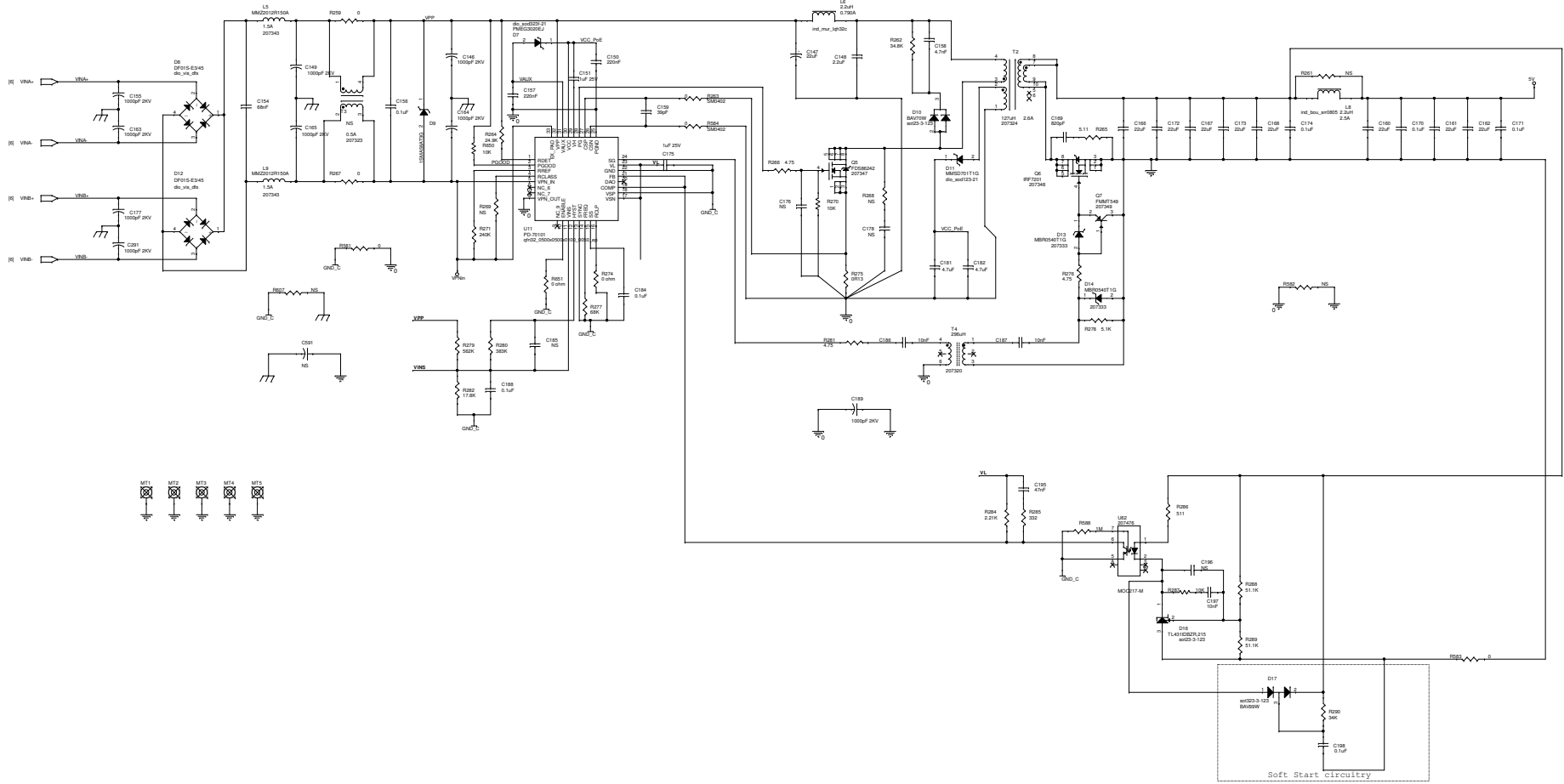
10/100 BaseT port 2



Place components on Ground-Earth plane

THIS DOCUMENT AND THE DATA CONTAINED HEREIN IS NOT TO BE REPRODUCED, OR DISCLOSED IN WHOLE OR IN PART WITHOUT THE PERMISSIONS OF EXALT COMMUNICATIONS INC.

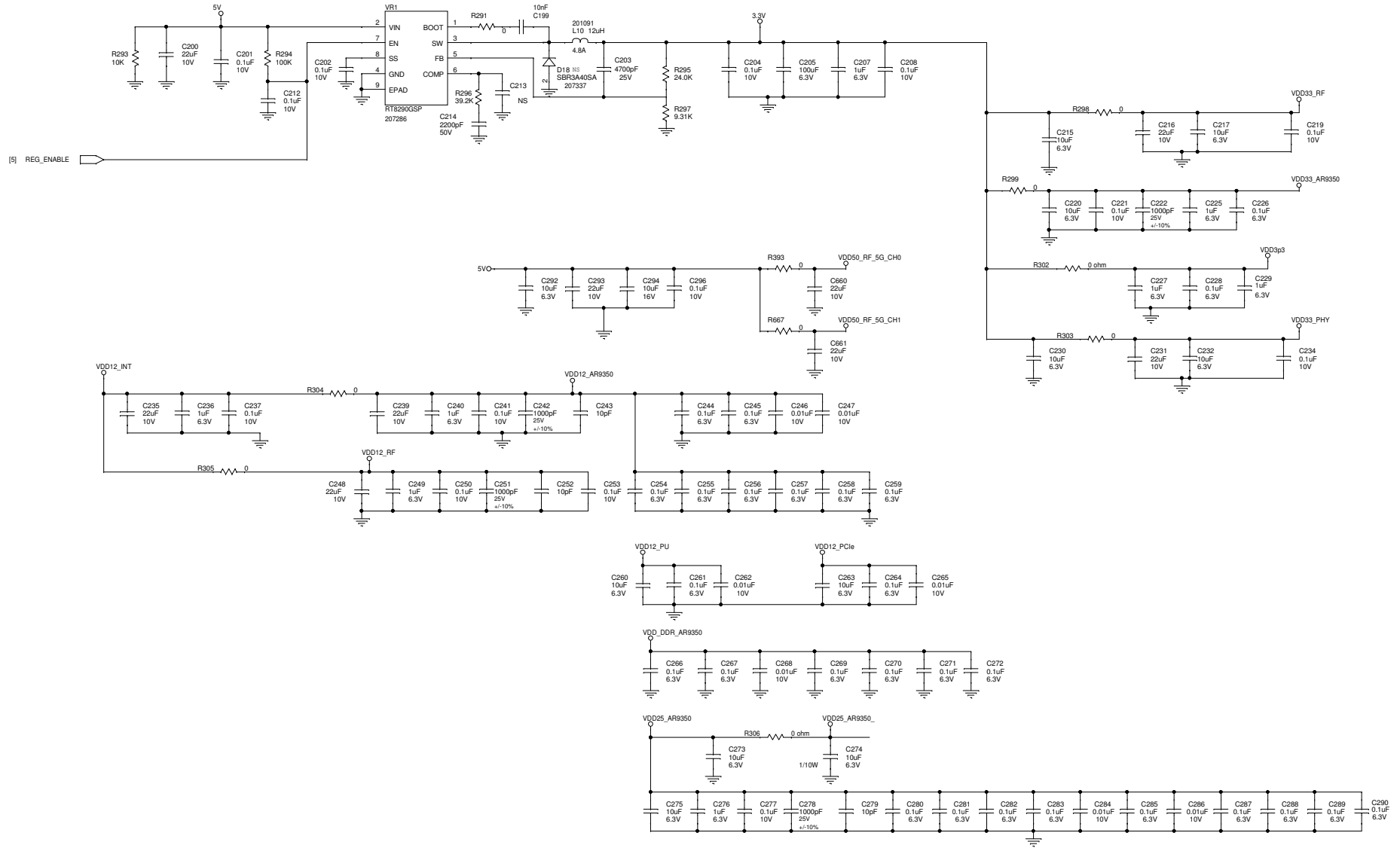
Date Created		04/30/2012	
Design		Y. SU / M. HINZ	
Drawn		Y. SU / M. HINZ	
Title			
802.11N Wireless Bridge / Access Point			
Size	Document Number	File Name	Rev
C	102334	102334	1P0
Date: Friday, April 05, 2013		Sheet	7 of 13



THIS DOCUMENT AND THE DATA CONTAINED HEREIN IS NOT TO BE REPRODUCED, OR TRANSMITTED IN ANY FORM OR BY ANY MEANS, WITHOUT THE PERMISSION OF EXALT COMMUNICATIONS INC.

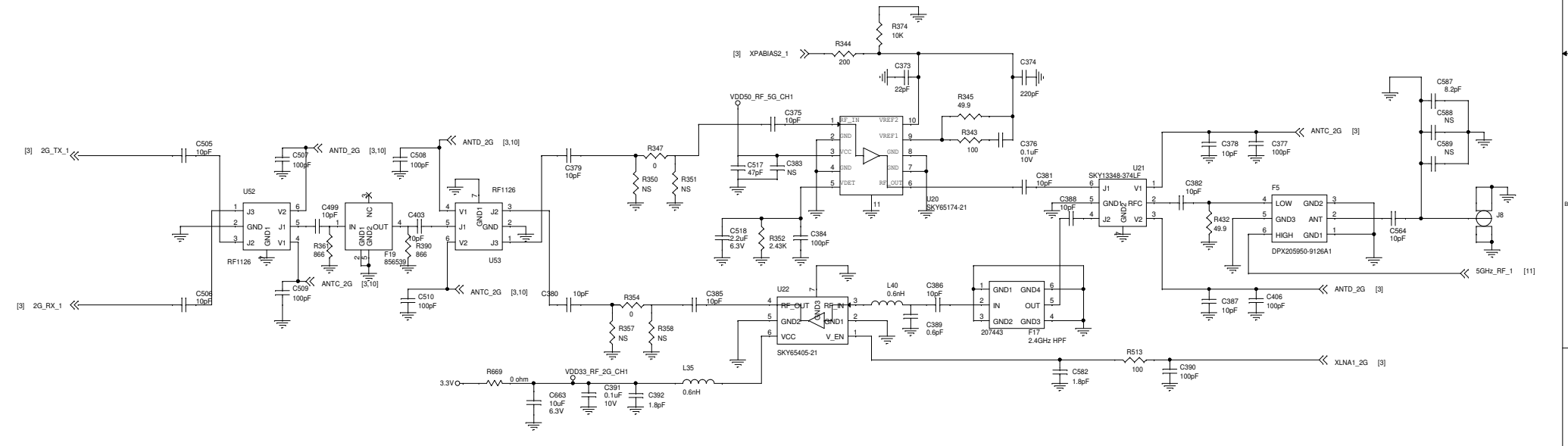
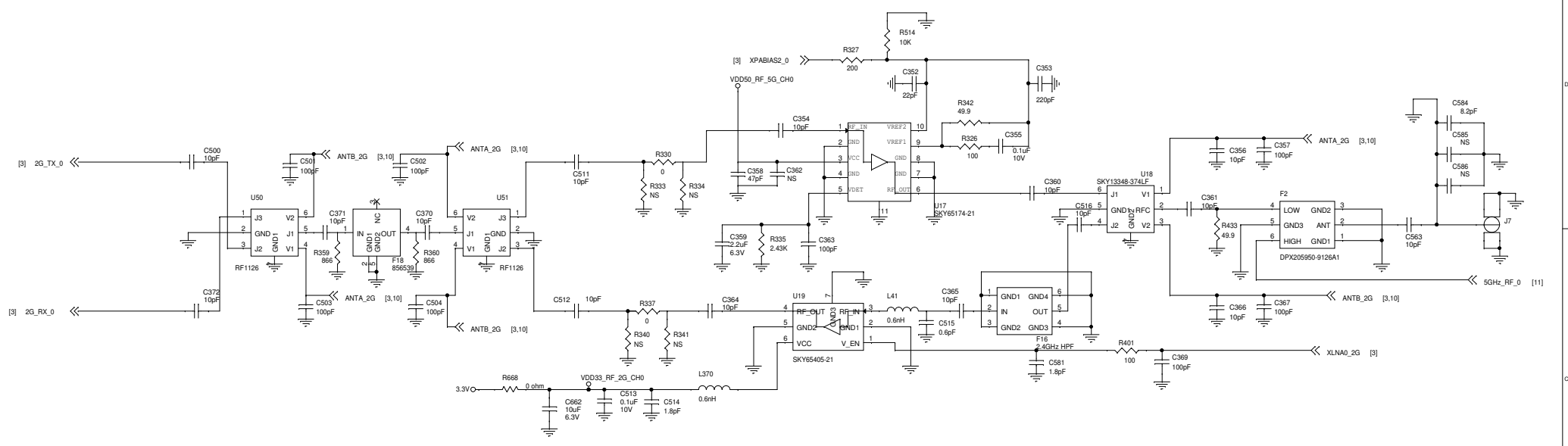
EXALT COMMUNICATIONS INC.		Date Created	06/20/2011
802.11N Wireless Bridge / Access Point		Author	P. BROWN
Doc ID	102234	File Name	102234
Rev	1	Scale	1:1

POWER SUPPLY, REGULATORS & DECOUPLING



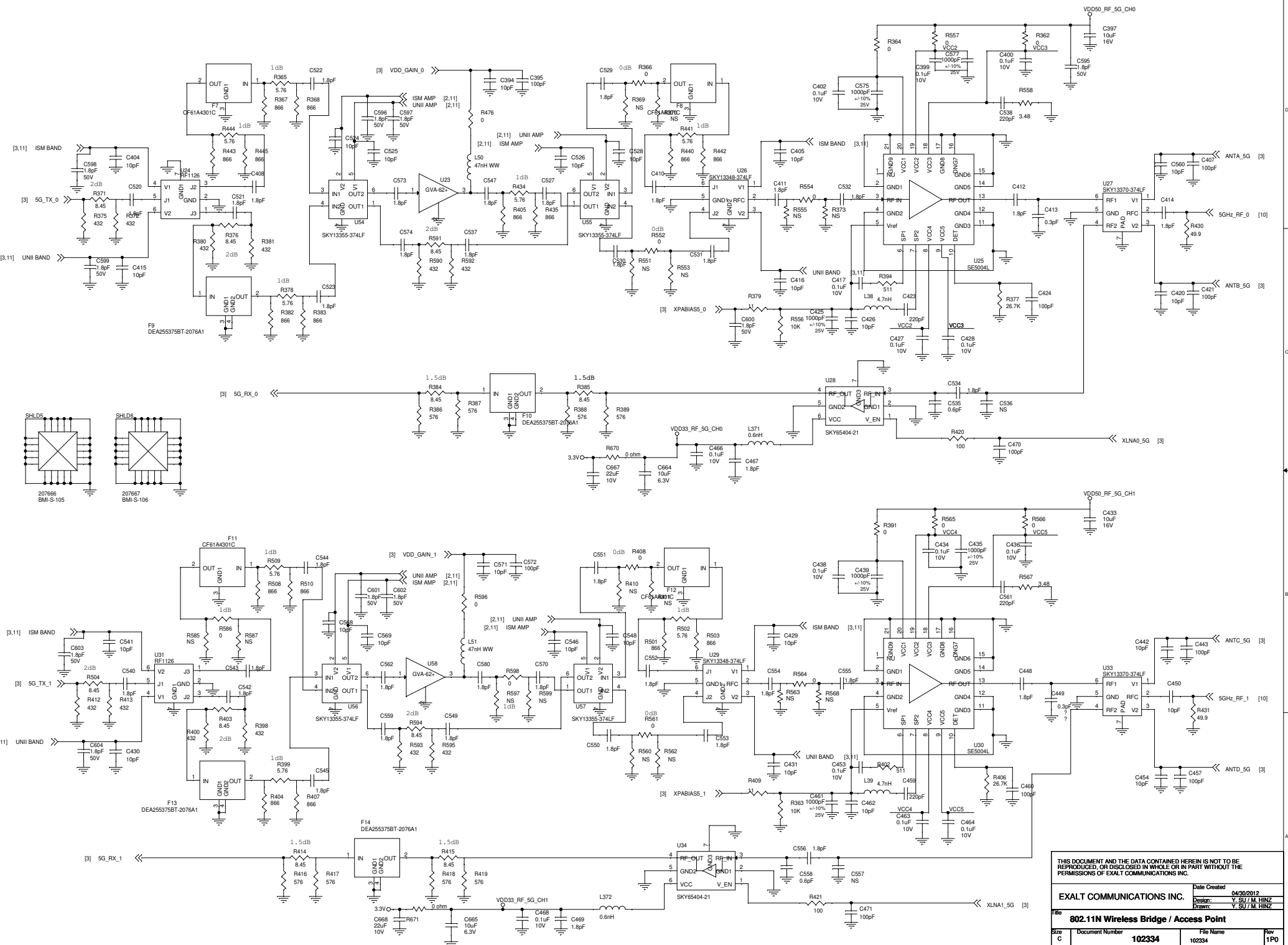
THIS DOCUMENT AND THE DATA CONTAINED HEREIN IS NOT TO BE REPRODUCED, OR DISCLOSED IN WHOLE OR IN PART WITHOUT THE PERMISSIONS OF EXALT COMMUNICATIONS INC.

Date Created		04/30/2012
Design		Y. SU / M. HINZ
Drawn		Y. SU / M. HINZ
Title		
802.11N Wireless Bridge / Access Point		
Size	Document Number	Rev
C	102334	1P0
Date: Friday, April 05, 2013		Sheet 9 of 13



THIS DOCUMENT AND THE DATA CONTAINED HEREIN IS NOT TO BE REPRODUCED, OR DISCLOSED IN WHOLE OR IN PART WITHOUT THE PERMISSIONS OF EXALT COMMUNICATIONS INC.

Date Created		04/30/2012	
Design		Y. SU / M. HINZ	
Drawn		Y. SU / M. HINZ	
Title			
802.11N Wireless Bridge / Access Point			
Size		Document Number	
C		102334	
File Name		Rev	
102334		1P0	
Date		Sheet	
Friday, April 05, 2013		10 of 13	



THIS DOCUMENT AND THE DATA CONTAINED HEREIN IS NOT TO BE REPRODUCED, OR DISCLOSED IN WHOLE OR IN PART WITHOUT THE PERMISSIONS OF EXALT COMMUNICATIONS INC.

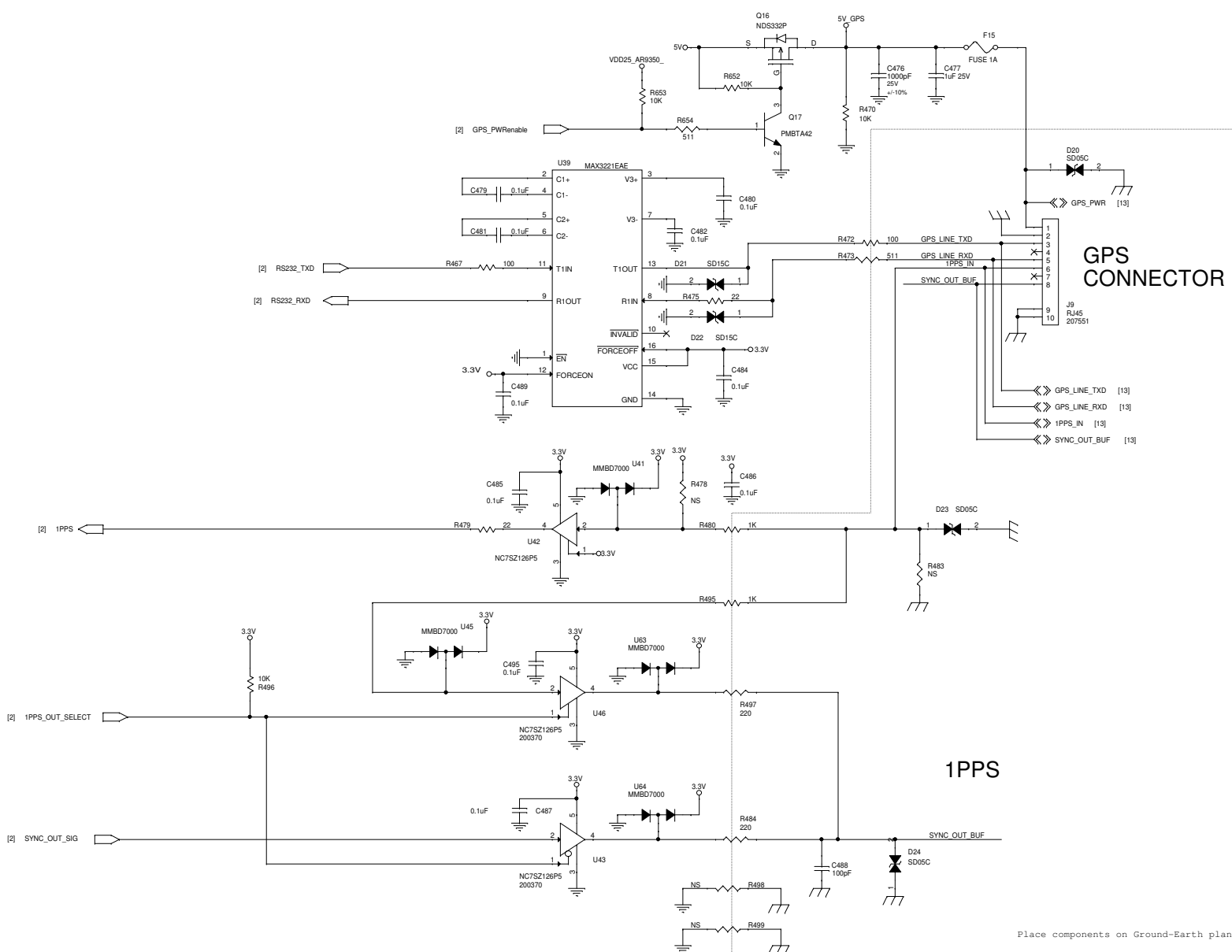
Exalt Communications Inc. Date Created: 04/30/2012

Design: Y. SU / M. HINZ
 Drawn: Y. SU / M. HINZ

802.11N Wireless Bridge / Access Point

Size C	Document Number	File Name	Rev
	102334	102334	1P0

Date: Friday, April 05, 2013 Sheet 11 of 13



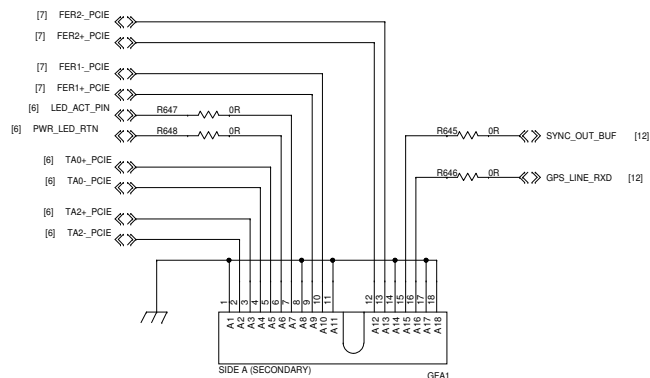
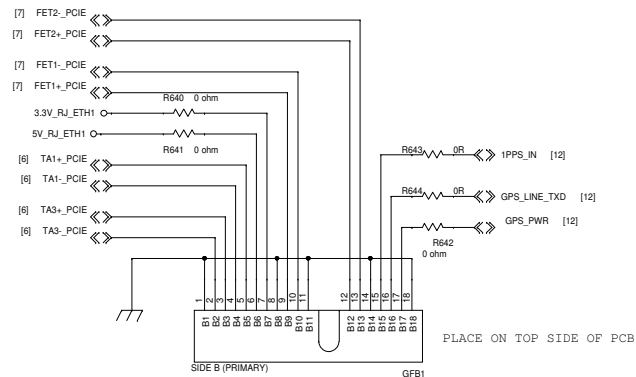
GPS CONNECTOR


1PPS

Place components on Ground-Earth plane

THIS DOCUMENT AND THE DATA CONTAINED HEREIN IS NOT TO BE REPRODUCED, OR DISCLOSED IN WHOLE OR IN PART WITHOUT THE PERMISSIONS OF EXALT COMMUNICATIONS INC.

Date Created		04/30/2012	
Design		Y. SU / M. HINZ	
Drawn		Y. SU / M. HINZ	
Title			
802.11N Wireless Bridge / Access Point			
Size	Document Number	File Name	Rev
C	102334	102334	1P0
Date		Sheet	
Friday, April 05, 2013		12 of 13	



THIS DOCUMENT AND THE DATA CONTAINED HEREIN IS NOT TO BE REPRODUCED OR DISCLOSED IN WHOLE OR IN PART WITHOUT THE WRITTEN CONSENT OF EXALT COMMUNICATIONS INC.		 Exalt Communications Inc. 254 E. Hacienda Avenue Campbell, CA 95008-6617	
DESIGN	Michael A. Ito	DATE	--
CHECKED	NO	DATE	--
APPROVED	NO	DATE	--
REV	NO	DATE	--
DATE	Friday, April 08, 2011	SCALE	NONE
GOLDFINGER		SIZE	C
102334		REV	1P0
SHEET 13 OF 13			