



# **3666OCU**

## **User Manual**

**Suzhou Sate Auto Electronic Co., Ltd**

[www.sate.com.cn](http://www.sate.com.cn)

## Catalogue

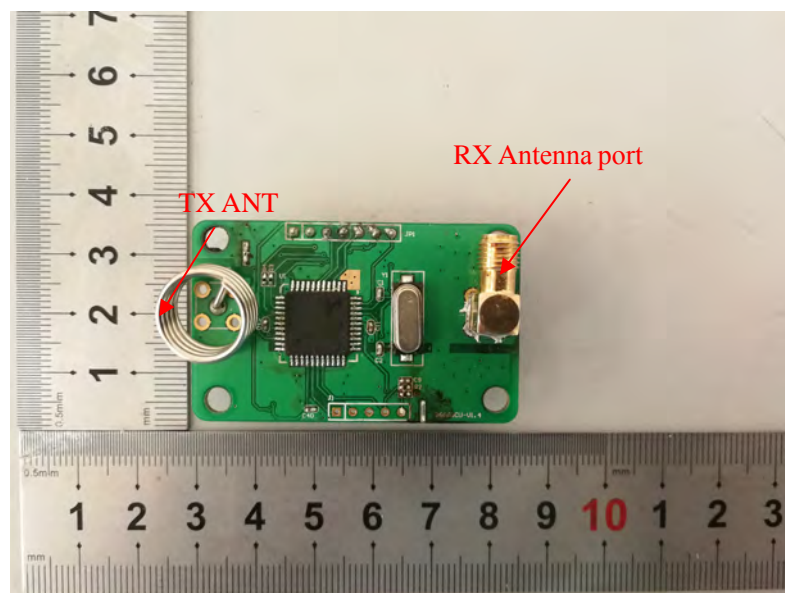
### I. 3666OCU Introduction

The 3666OCU has the function to do the communication with other Modular .

Besides, the 3666OCU can also be configured through Serial protocol.

1.1 Read current tire pressure and temperature data.

1.2 Record and save updated tire pressure and temperature data.



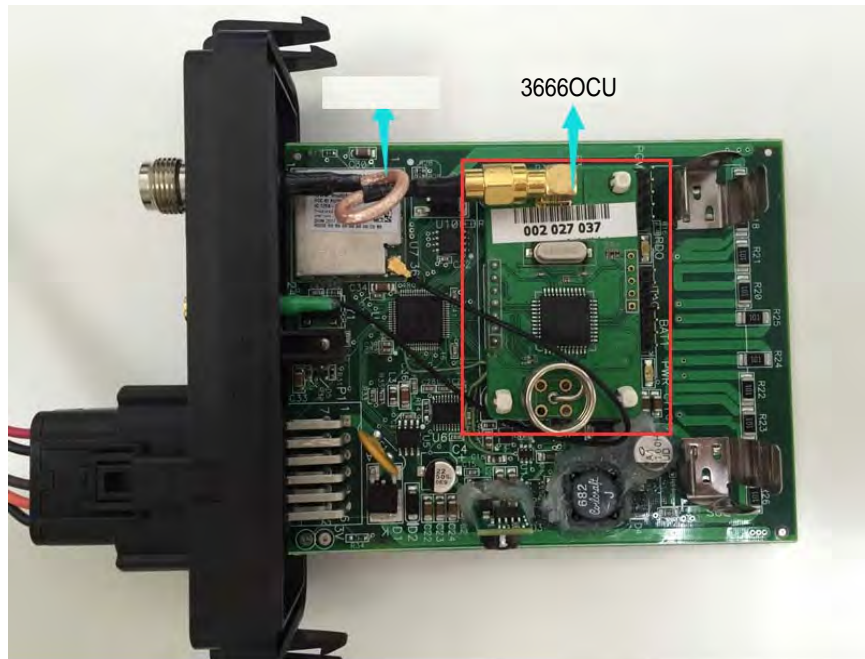
3666OCU

### II. YARD CHECK 3666OCU INSTALLATION

When the 3666OCU receive a signal through RX ANT , Then the MCU contorl the TX part send the signal to other receivers through TX ANT.

The 3666OCU can match the different receivers automatically.

1.1 Fix the 3666OCU onto the other host to assemble one whole product as the following pictures showing.



The assembled product

## 1.2 Antenna

The TX antenna uses a helical antenna and is fixed on the PCB for sending RF signals. The receiving antenna for receiving signals.

## III.Specifications

Mid-frequency:434.1MHz

Receiving Sensitivity:-105dBm

Transmitting Power:0dBm

Input Voltage:DC 3.3V

Operating Temperature:-40°C~+85°C

FCC Statement

Any Changes or modifications not expressly approved by the party responsible for compliance could void the user's authority to operate the equipment.

This device complies with part 15 of the FCC Rules. Operation is subject to the following two conditions:

- (1) This device may not cause harmful interference, and
- (2) This device must accept any interference received, including interference that may cause undesired operation.

**FCC Radiation Exposure Statement:**

This equipment complies with FCC radiation exposure limits set forth for an uncontrolled environment .This equipment should be installed and operated with minimum distance 20cm between the radiator& your body.

**FCC Label Instructions**

The outside of final products that contains this module device must display a label referring to the enclosed module. This exterior label can use wording such as: "Contains Transmitter Module FCC ID:TTE3666OCU,or "Contains FCC ID:TTE3666OCU, Any similar wording that expresses the same meaning may be used.