

Map/Voice Uploader

(For installing Navigation System on memory card or HDD)

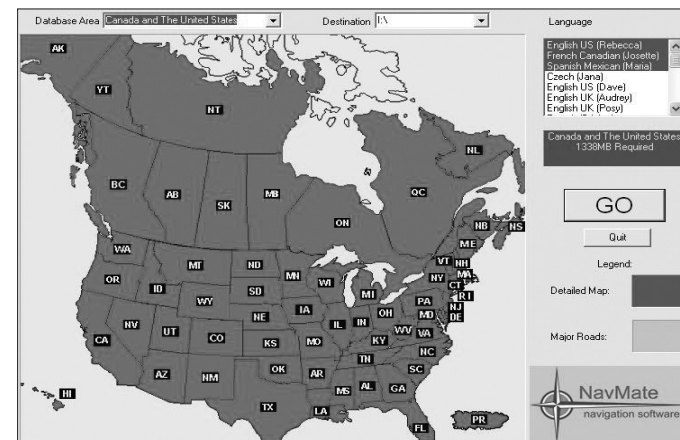
The Map/Voice uploader utility is used to upload map data into the navigation unit. It helps to copy the selected map data from the Master DVD to the memory storage device like SD card, CF card, HDD (Hard Disk Device) etc. Before the map data is downloaded to the memory storage device, the existing navigation data i.e. Address Book and Previous Destinations will be backed up into a folder called \Navmate on your PC. After downloading is complete, the backed up data can be restored.

Steps to follow to download the Map Data

- 1) The following components are required on your PC:
 - a. DVD-ROM drive
 - b. USB port
 - c. USB cable
 - d. Memory card reader for CF card and SD card.
- 2) Connecting the memory devices:
 - a. If the navigation device is using CF or SD card, then insert CF or SD card to memory card reader then connect it with the USB cable to the PC.
 - b. If the navigation device is using HDD, then connect the device with the USB cable to the PC.
- 3) Select "Map/Voice Uploader" if you have NavUtil running on PC. If not, insert Master DVD in your DVD drive and wait for NavUtil to come up then select "Map/Voice Uploader".

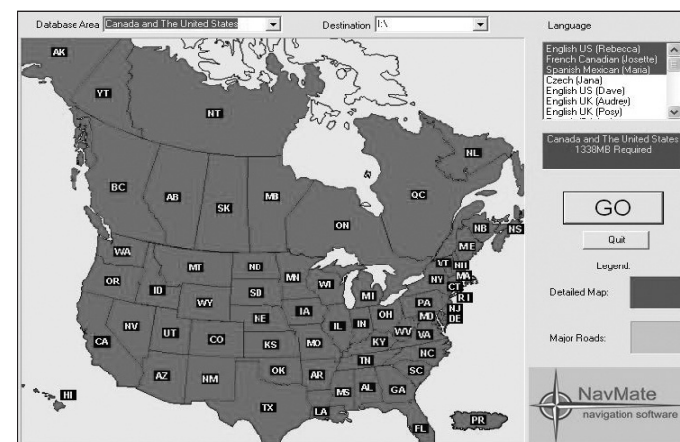
Select Database Area

To select the Database Area, click on the down arrow of the Database Area option and then select the area you want to download.



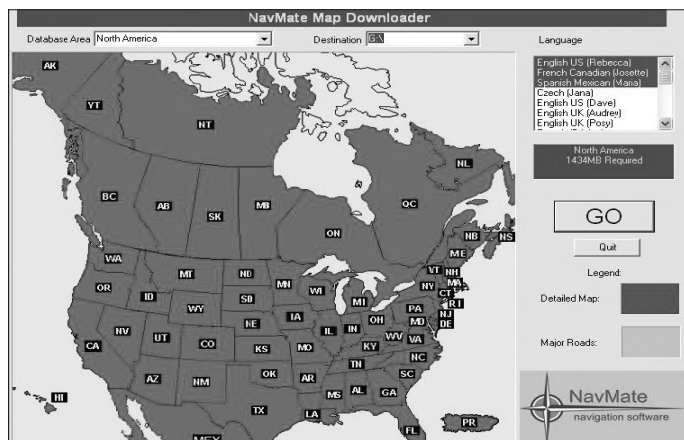
Select Language

To select the Language, click on the down arrow of the Language option and then select the voice guidance language you prefer.



Select the Destination

To select the Destination, click on the down arrow of the Destination option and then select the destination drive of the memory device.



After making all the above selections click on “GO” button to start the downloading process.

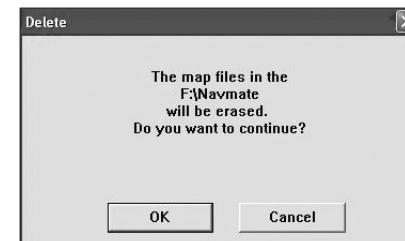
The Process of Copying

After the downloading process starts the following windows will appear based on the memory card device.

If the CF card is connected then:



If HDD is connected then:



This process will backup the navigation data files from your memory card to a folder called \Navmate on your PC, and then it removes the navigation folder from the memory card.

Click “OK” to continue the process.

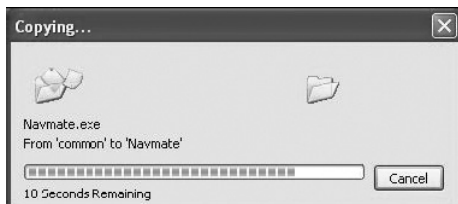
If the CF/SD card is connected then:



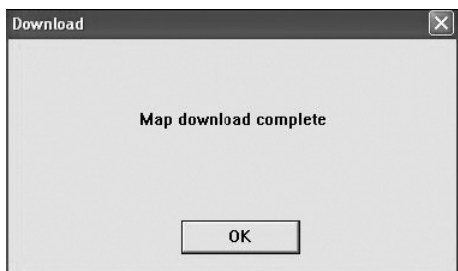
If HDD is connected then:



After cleaning up the program will start copying/downloading the files from DVD to memory device.



The window below will appear when copying/downloading is complete:



Left click "OK" to exit this program.

● Remove the Memory Device

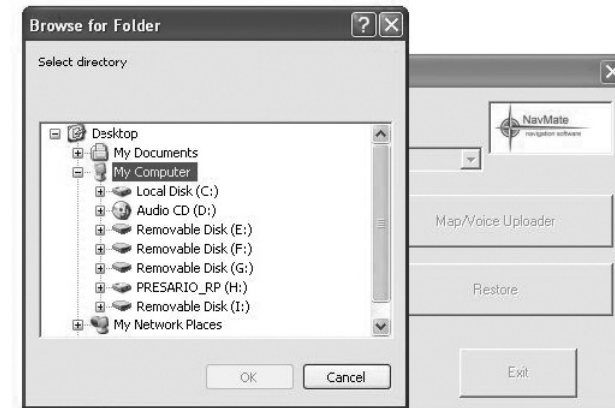
Safely remove memory card from the memory card reader or disconnect the USB cable.

- If the device is using CF/SD card , then left click "Unplug or Eject Hardware" icon on your PC then left "OK" at the "The 'USB Mass Storage device' device can now be safely removed from the system." Prompt. Remove your memory card from the memory card reader. The memory card is now ready for use.
- If the device is using HDD, then disconnect the USB cable from the HDD navigation device. Now, the navigation unit is ready to use.

● Backup

Backup utility is intended to store user specific data from the navigation unit to local drive.

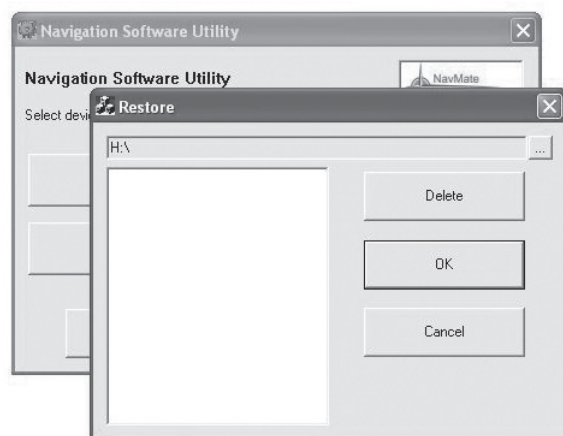
- Data is copied from directory /Storage from root of unit to user selected destination directory. Entire content of the directory will be copied, including subdirectory.
- When backup utility is started, destination directory dialog appears. User can select directory by navigating through directory tree. User can choose OK to confirm directory selection or Cancel.
- When backup process is started, progress dialog box appears. The dialog has only one button Cancel to interrupt process. If process is interrupted no cleanup operation is undertaken.
- During backup operation, data is being copied from /Storage directory on the unit to directory YYYYMMDD.HHMMSS.nsu – where:
YYYY – year, MM – month, DD – day. HH – hour(0-24), MM -minutes (00..59), SS – seconds (00..59).nsu
Eg. 20070606.121225.nsu
- If destination directory exists and is not empty, warning box appears to confirm overwrite files. The box contains OK and Cancel button. OK confirms operation to continue. Cancel terminates backup process.



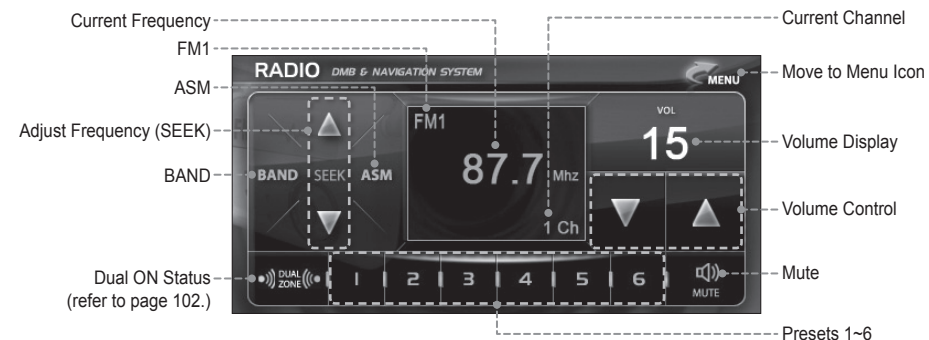
Restore

Restore utility is intended for restoring of previously backed up data to unit and, also, to manage backed up data.

- When restore utility is started dialog box appears. This dialog contains current directory path and list of previously backed up data in current directory.
- Change current directory button (...) starts dialog to select directory. The dialog shows current directory and user can navigate through directory tree to choose new selection. If user presses OK new current directory will be set and backed up data list will be updated. Cancel button terminate selection process and current directory will be not changed.
- Delete button allows delete selected backed up data directory from list. After activation of this button warning to delete popped up. If user confirms delete operation, selected data directory will be removed with its content.
- Cancel button terminate restore operation.
- Restore button starts process to copy data from selected to backup directory to Storage directory from unit's root.
- If there is some data in Storage directory, warning appears to confirm overwriting files. When restoring process is started, progress box appears.
- The progress box contains Cancel button to interrupt process. When interrupt is taken, file structure in Storage directory is inconsistent. If restoring process is finished successfully, Restore utility finishes its work.



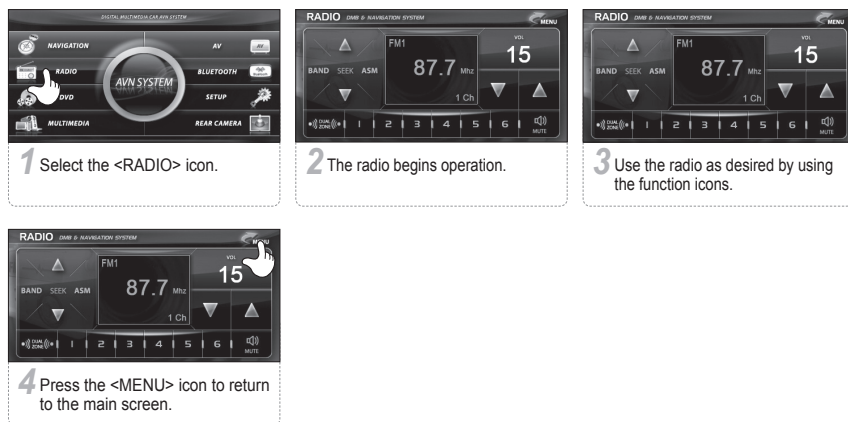
RADIO Main Screen



RADIO Function Icons

ASM	Six (1~6) frequencies with good reception in the current area are automatically saved via ASM Mode.
BAND	<ul style="list-style-type: none"> - Cycles through sequence of [FM1▶FM2▶AM]. - Displays most recent frequency for each band. - If in ASM MODE, disables ASM MODE and returns to USER MODE.
SEEK ▲(+)/▼(-)	<p>Short Key</p> <ul style="list-style-type: none"> - Adjusts frequency up/down by single intervals. - North America FM : 200Khz, 87.7 ~ 107.9Mhz (87.5~108.0Mhz) AM : 10Khz 530 ~ 1720Khz (530~1710khz) - If the SEEK <▲/▼> icons are pressed while ASM, automatic SEEK is running, ASM, automatic SEEK is stopped. <p>Long Key</p> <ul style="list-style-type: none"> - Automatic SEEK - If the <▲/▼> icons are pressed for longer than one second, a beep is emitted and automatic seeking of begins from the current frequency. The automatic seeking does not stop and continues even through broadcasts. (This function can be used to conveniently move to a desired frequency quickly.) - If Automatic SEEK is stopped: Automatic SEEK is stopped by pressing the ASM, SEEK <▲/▼>, or BAND icons. (Automatic SEEK is also stopped when power is turned off.)
PRESETS 1~6	Move directly to any of the frequencies saved to a preset by pressing the corresponding preset.

RADIO Simple Operation



RADIO Detailed Functions

01

ASM

If the ASM icon is pressed, six (1~6) frequencies with good reception in the current area are automatically saved via ASM Mode.

After ASM is completed, each of the six saved frequencies is played for five seconds to check reception, followed by a move to preset 1.

If the frequencies saved during ASM do not come to a total of six, the previously saved frequencies are maintained. (The "ASM" OSD appears on the screen. The "ASM" OSD is displayed continuously until the "ASM Mode" is exited.)

- Searching begins from the first frequency in each mode (FM: 87.7Mhz, AM: 530Khz).
- ASM applies only to the frequencies that match the current BAND. (FM1, FM2, AM)
- ASM Mode & USER Mode
 - a. Frequency saving can be done in the two modes of ASM Mode and USER Mode (user directly saves frequencies to the presets) simultaneously.
USER Mode (6 saved frequencies each in FM1, FM2, and AM), ASM Mode (6) for a total of 24 saved frequencies
 - b. When running ASM, frequencies are saved to ASM presets. (Switch to ASM Mode.)
Thus, pressing any of the preset channels (1~6) enters ASM Mode operation.
 - c. When in ASM Mode, pressing the BAND icon switches to USER Mode. (Exits ASM Mode.)
After entering USER Mode, the user can select among presets that were manually saved.
 - d. ASM Mode remains running until the power is turned on/off or the BAND is changed.
- To stop during ASM:
 - Press the SEEK, ASM, or BAND icons.
 - Stopping in the middle of ASM results in the maintenance of the frequencies in memory prior to the stoppage, while ASM OSD is erased. (Switch to USER Mode.)



02

PRESET 1-6

- Recalling a Preset:
Select the desired frequency saved to a preset by pressing the corresponding preset number (1~6). Press the preset icon to begin broadcast. (The frequency and channel number appear on the screen.)
- Saving a Preset:
To save the current frequency to a preset, select the desired preset (1~6) and press the corresponding icon for longer than one second until a beep is emitted, indicating that the current frequency has been saved to that preset. (The "SAVE" OSD appears on the screen for one second.)
- Default Presets
 - FM1 : 8770, 9010, 9810, 10610, 10790, 8770
 - FM2 : 8770, 9670, 10490, 10690, 10790, 8770
 - AM : 530, 600, 1000, 1600, 1720, 530



DVD Main Screen

Touch the playback screen in DVD mode to bring up the DVD function icons.



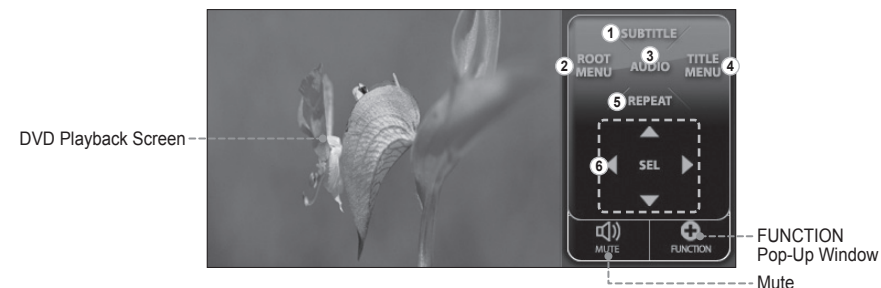
DVD Function Icons

	Rewind / Fast Forward Playback Press during playback to play backward or forward. Each press of the button cycles through speeds of 2x, 4x, 8x, and 20x. (Note: Function buttons only work during playback.) Speed Specs. - DVD : 2x, 4x, 8x, 16x, 32x, 64x - VCD : 2x, 4x, 8x, 16x - MP3,MPEG : 2x, 4x, 8x, 16x - CDDA : 2x, 4x, 8x, 16x - DIVX : DIVX : 2x, 4x, 8x, 16x
	Play / Pause Press to play a DVD or pause during playback.
	Stop Press to stop DVD playback. (Note: Function buttons only work during playback.)
	Previous / Next Track Press to move to the previous or next track during playback. (Note: Function buttons only work during playback.)

FUNCTION Icons (for DVD)

Press the FUNCTION icon to bring up the FUNCTION pop-up window.

Exit Pop-Up Window: When FUNCTION, FULL SCREEN is selected, the pop-up window is exited.



1	SUBTITLE	Changes the DVD subtitles. (This function is available only with the subtitles (languages) supported on the DVD.)
2	ROOT MENU	Displays the DVD ROOT MENU list screen.
3	AUDIO	Changes the DVD AUDIO. (This function is available only with the AUDIO (languages) supported on the DVD.)
4	TITLE MENU	Displays the DVD TITLE MENU list screen.
5	REPEAT	Cycle Sequence: CHAPTER REPEAT ► TITLE REPEAT ► REPEAT OFF
6	MOVE ICONS	Used for moving and selecting in the TITLE and ROOT MENU screens.

FUNCTION Icons (for VCD)

Press the FUNCTION icon to bring up the FUNCTION pop-up window.

Exit Pop-Up Window: When FUNCTION, FULL SCREEN is selected, the pop-up window is exited.

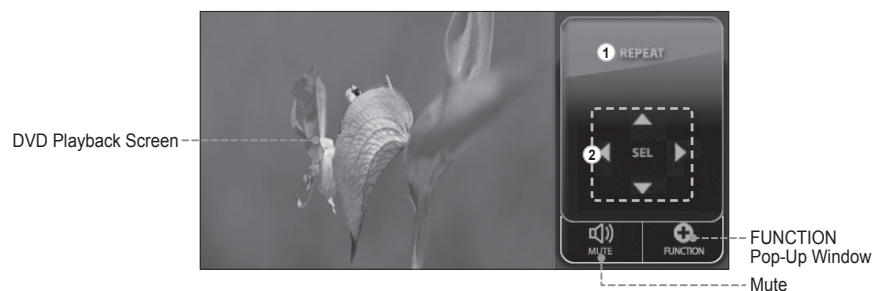


1	PBC	Turns Playback Control on/off. (Turns VCD Menu on/off in VCD 2.0)
2	REPEAT	Cycle Sequence: REP-ONE►REP-ALL ►REPEAT OFF
3	MOVE ICONS	Used for moving and selecting in the VCD MENU list screen.

FUNCTION Icons (for MP3, PHOTO, DIVX, or AUDIO CD)

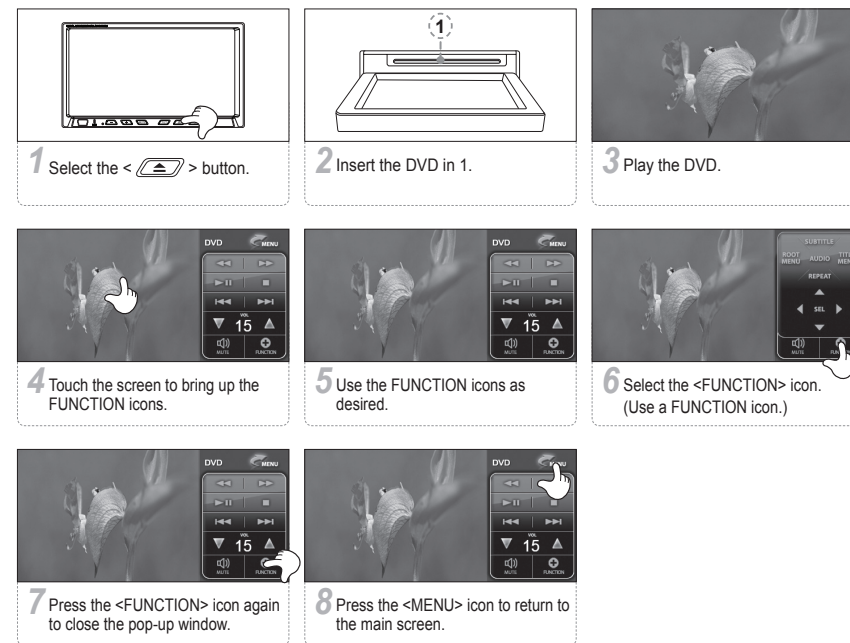
Press the FUNCTION icon to bring up the FUNCTION pop-up window.

Exit Pop-Up Window: When FUNCTION, FULL SCREEN is selected, the pop-up window is exited.



1	REPEAT	Cycle Sequence: REP-ONE►FOLDER REPEAT►DISC REPEAT►REPEAT OFF
2	MOVE ICONS	Used for moving and selecting in the VCD MENU list screen.





DVD Simple Operation



MULTIMEDIA

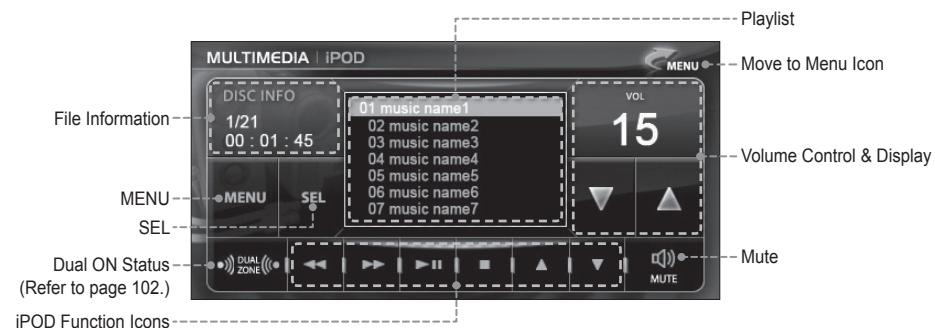
MULTIMEDIA Main Screen









	Connect to and use with an iPod.
	Connect to and use with an AV device such as a camcorder.
	Connect to and use with an external device (external hard drive, memory stick, etc.) via a USB port.
	Insert an SD CARD into the product and use.

iPOD

iPOD Main Screen

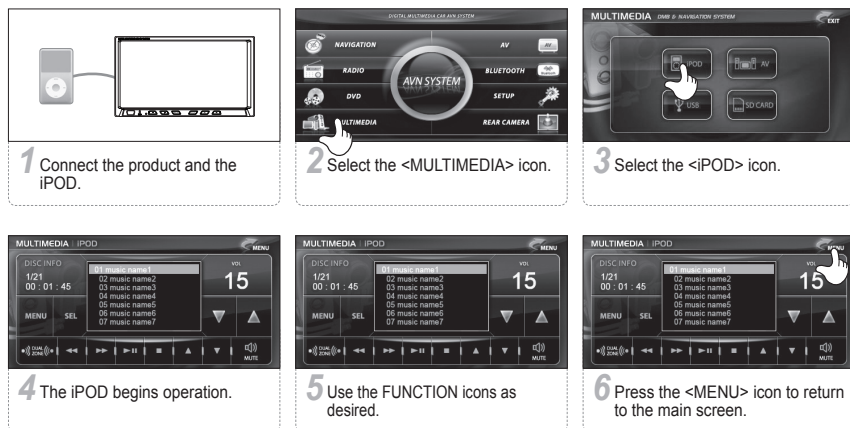


• iPod Function Icons

	Play/Pause
	Stops currently playing file.
	During playback, moves [backward/forward] by 5-second intervals.
	During playback, plays the [previous/next] file. Moves [up/down] the IPOD MENU List.
	Turns the IPOD MENU List on/off. MENUS include PLAYLIST, ARTIST, ALBUM, GENRE, SONG, and COMPOSER.
	After using the up/down icons to navigate the IPOD MENU List, press <SEL> to play the MENU selection.

iPOD

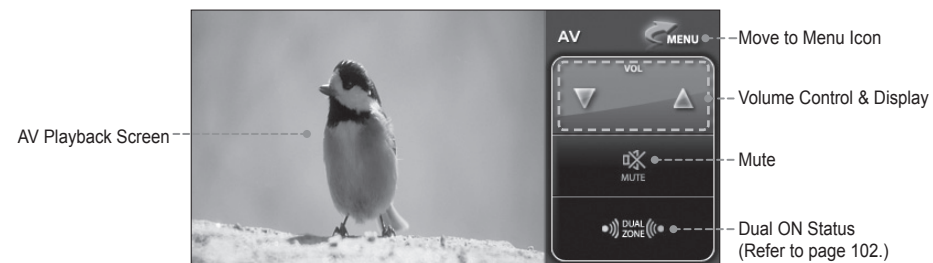
iPOD Simple Operation



AV

Connect to and use with an AV device such as a camcorder.

AV Main Screen



AV Simple Operation

