

Press current position  to add a waypoint:

POINT-0

1 2 3 4 5 6 7 8 9 0

Q W E R T Y U I O P

A S D F G H J K L []

Z X C V B N M - . ,

✓ ENG áü ✕

POINT-1

1 2 3 4 5 6 7 8 9 0

Q W E R T Y U I O P

A S D F G H J K L []

Z X C V B N M - . ,

✓ ENG áü ✕

Press Menu icon  and select Stop Trail when you complete the trail:

• Name Trail

After select the saved trail use the keyboard to rename the trail.

Trail Book

Add

Name Trail

Delete Trail

Rename

0

N 37°45'55.0" W 122°25' 3.0"

Trail_1

Trail_2

TRAIL_1

1 2 3 4 5 6 7 8 9 0

Q W E R T Y U I O P

A S D F G H J K L []

Z X C V B N M - . ,

✓ ENG áü ✕

• Delete Trail

Select Delete Trail then chooses the trail name to remove it from the system

Trail Book

Add

Name Trail

Delete Trail

Delete Trail

0

N 37°45'55.0" W 122°25' 3.0"

Trail_1

Trail_2

Trail_1

Confirm Deletion

✓

↩

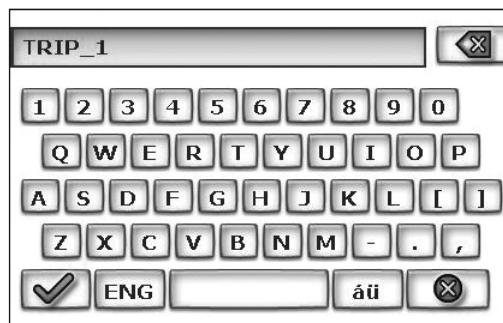
Edit Trip Book

Edit Trip Book allows adding and editing trips and destinations within a trip.



Add

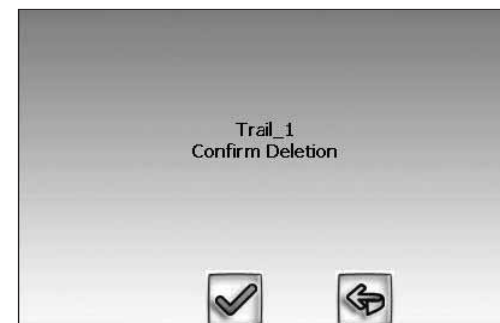
Add allows adding trips and destinations within a trip.



Press to add additional destination or press to delete an existing destination in a selected trip.

Edit

Edit allows modifying destinations within a trip and or deleting an existing trip.





● Edit My POI

The user can create personalized categories of Point Of Interest.



● Add Category

In order for My POI to work properly, a category needs to be created first before adding a destination as a POI. Use keyboard to create a new POI category name.



● Setup Display

By selecting the map scale, the user can hide or unhide the POI's display on the selected map scale view.





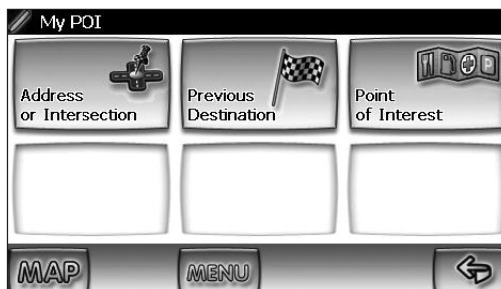
• Edit Category

The user can modify or delete the selected POI category



• Add

By selecting a destination, the user can add this destination as a POI to the POI category you have created.



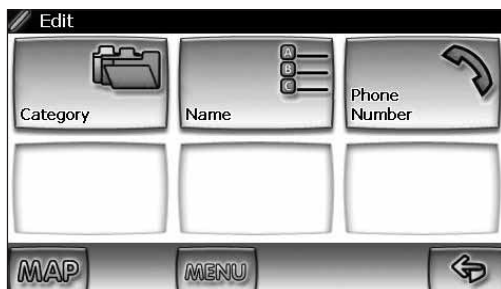
• Alert

By selecting sound and distance the system will alert you when you are approaching the POI destination.



● Modify

The user can modify the POI items by category, by name or by phone number. The POI names can be edited or deleted from the list.



● Set-up Menu

You may customize the NavMate software to your own preferences. Select Set-up option to adjust navigation preferences, display options, and units (km or mi) settings. You may also reset the vehicle position and do some basic system diagnostics through the Setup Menu.



● Navigation Preferences

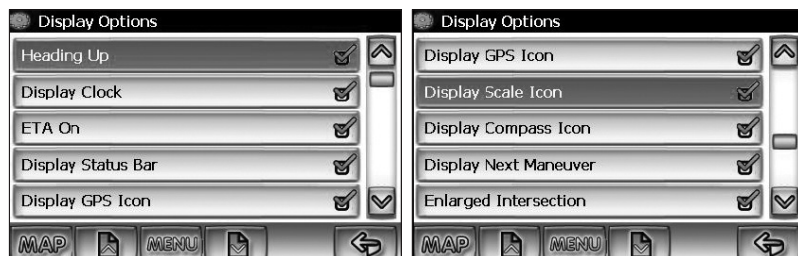
Navigation Preferences allows you to set the simulation mode on, and set the route calculation and guidance options.



- Simulation On/Off – When On, the NavMate software will “drive” the selected route even though the vehicle is not moving. This can be used to preview a route, or show off the system to friends.
- Shortest time/distance – Determines if the NavMate software emphasizes finding the fastest or the shortest route.
- Avoid Freeway yes/no – Determines if the NavMate software avoids or uses freeways in the route calculation.
- Toll Yes/No – Determines if the NavMate software uses toll roads in the calculated route.
- Auto recalc On/Off – When On, the NavMate software will automatically recalculate the route if the current route is left.
- Voice Guidance On/Off – When On, the system will give audible guidance.

Display Options

Display options allow you to set the map orientation and some of the information items displayed.



- North Up/Heading Up – Determines if the map is always displayed with North direction at the top of the screen or if map is always adjusted so that vehicle symbol points toward the top of the screen.
- Status Bar Display On/Off – Turn the display of the Status Bar on or off.
- GPS Icon Display On/Off – Turn the display of the GPS reception symbol on or off.
- Scale Icon Display On/Off – Determines if the map scale symbol is shown.
- Compass Icon Display On/Off – Turn the Compass symbol on or off.
- Next Maneuver On/Off – Set the display of the turn symbol.
- Soft Keys Auto-hide On/Off – Turn the function key display on or off
- Intersection Zoom On/Off – Turn the true view on or off.

UIF Settings



Day/Night Settings



Point of Interest

This feature will allow you to select POI that will be displayed in different scales.



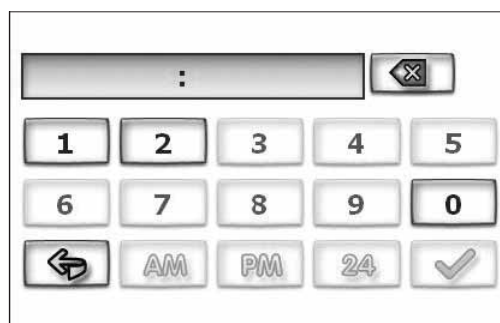
● Set Distance Units

The units used when displaying and announcing the distance to turns may be set to Miles (decimal miles, e.g. zero point three miles), Kilometers/meters, or Miles/yards based on personal preference.

● Distance Units Selection



● Set Time



● Language Settings

You can choose one of the following languages/voices:



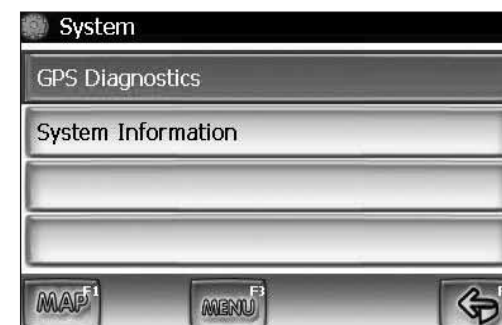
● Location Reset

You may reset the location of the vehicle symbol using the Location Reset option.



● System

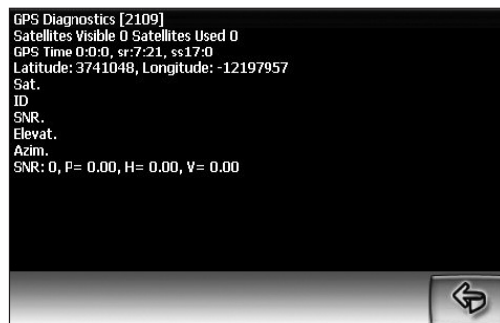
The System Diagnostics menu allows you to diagnose the GPS reception status, adjust the current vehicle symbol position, and it also provides information on the current software and map version numbers.



The GPS diagnostic displays the number of GPS satellites currently in view and how many are currently being used. The GPS satellite time is displayed (UTC) and so is the latitude and longitude determined from GPS.

GPS diagnostic

GPS Diagnostic Test Result



To reset the vehicle symbol based on the GPS determined longitude and latitude, select GPS VP reset.

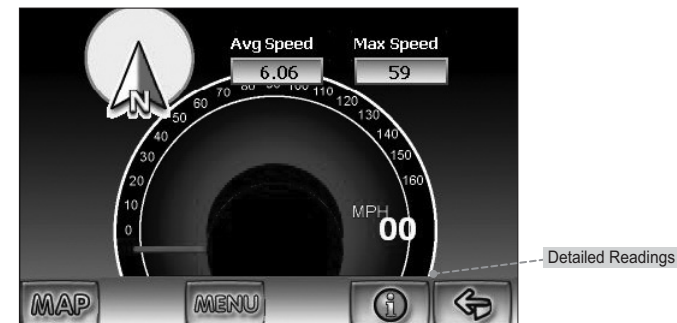
The version numbers for the system software and mapping can be found under System Information.

System Information



Trip Computer

Trip Computer gives the readings of speed, trip related timing, elevation, odometer and clock.



Press to display detailed reading of each field.



Scroll the Up or Down arrow button to choose the field then press to reset current reading.



Planned Route

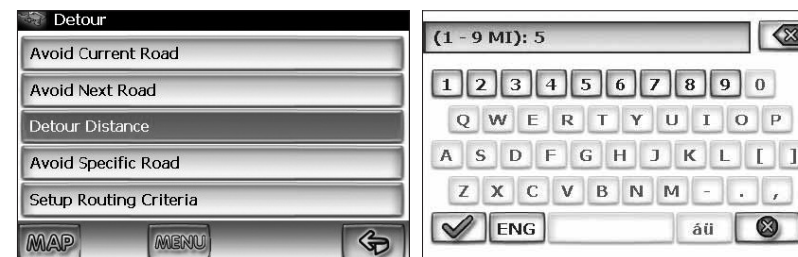
To view planned route on a highlighted route click the Yellow Maneuver Icon and the system will display the entire route list.



Detour



Detour Distance



Avoid Specific Road



Cancel Route

Select this function to cancel the current route.



Follow Trail

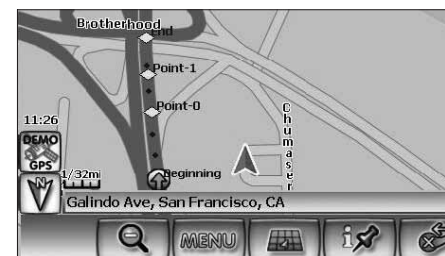
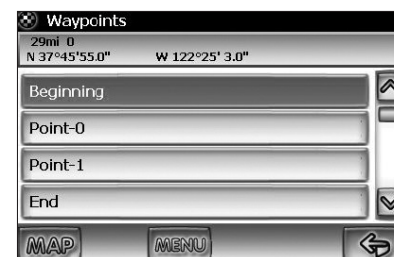
Next time when you go off-roading, you can follow the same trail you created by selecting "Start Route Guidance" then select "Trail Book" and finally select an existing trail.



You will see the following screen upon selecting a trail:



You can select to go to any points in this trail as a starting point. Upon your selection, the system will point you with a red line to that starting location. You will follow the red line to the starting point and start your trail blazing by following the dotted line.





Press Menu Icon  then select "Stop Trail" to cancel route.



Appendix A : NavUtil Manual

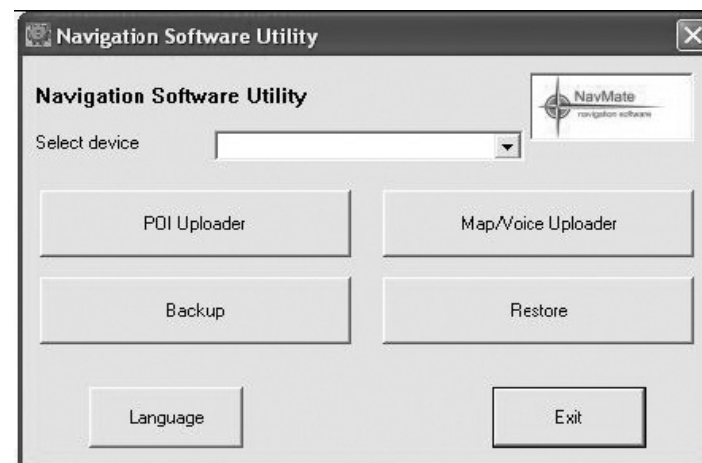
Introduction

Navigation Software Utility (NavUtil) has 4 major components:

- 1) POI Uploader
- 2) Map/Voice Uploader (For installing Navigation System on memory card or HDD)
- 3) Backup
- 4) Restore.

This utility helps the user to upload/download POI files, map and voices files, backup the user specific data files and also to restore user specific data files into the navigation unit.

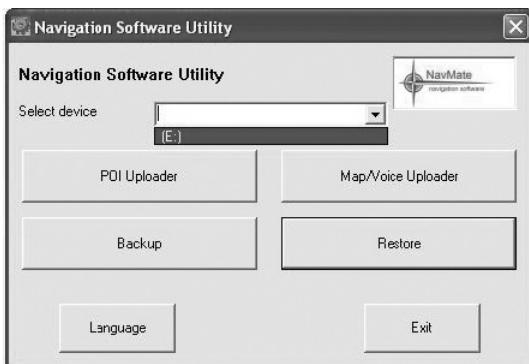
The NavUtil Tool pops up when the DVD is inserted into the PC. As per the requirement the tool can be used for further usage. Please refer to following screen:



Select Device and Language function

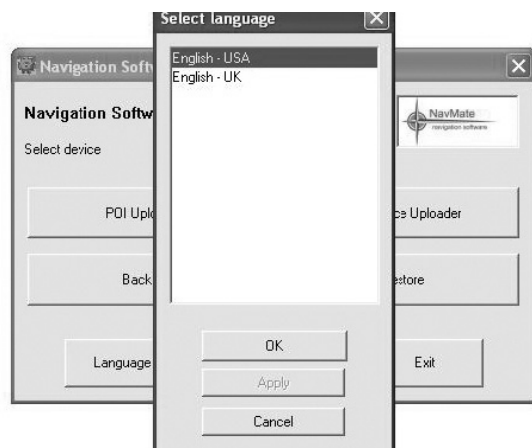
Select Device

Select Device allows you to access your navigation SD card or navigation device. For example, if your navigation SD card is inserted in E: drive, you will be able to select it.



Language

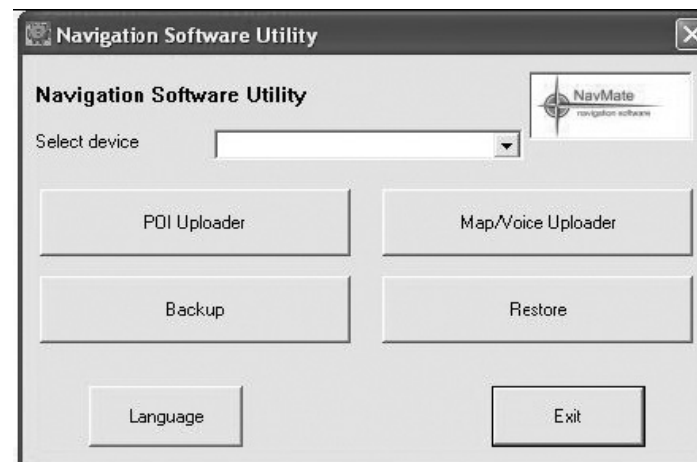
It allows you to select different languages when running NavUtil. So far it supports US English, UK English and Russian.

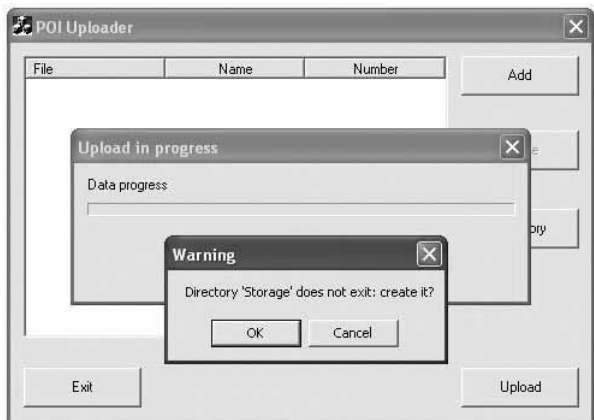
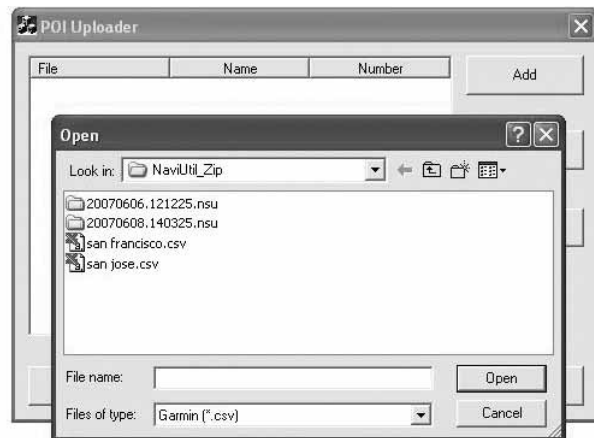


POI Uploader

POI Uploader intended to edit and upload POI categories and import and upload list of POI's. When POI Uploader is started it shows list of POI imported files. Whatever files the user needs to upload should be collected and loaded.

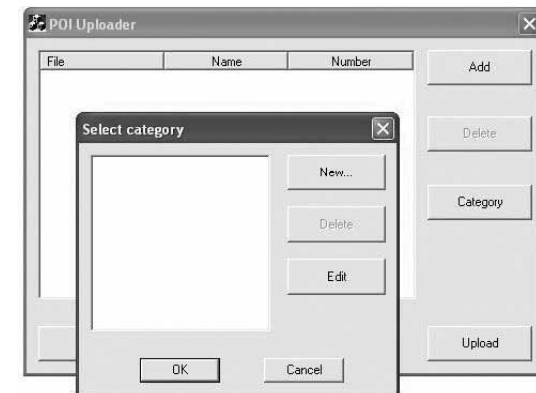
- Button "Add" adds new file to import list. By activating this button, "Open file" dialog box appears. If a file is chosen then "Select category" dialog box appears. If category is selected or created (by new button) and assigned to the file, file name will be inserted in POI file list in front of main dialog box.
- Button "Delete" allows deleting one or more selected files. When button is activated a message box with prompt to delete appears. If user presses "Yes" selected file will be removed from the file list. If "No" button is pressed, deleting process will be terminated. "Delete" button will be disabled till; at least, one (or more) files will be selected in the file list.
- Activating "Category" pops up "Select Category" dialog box. Button "Category" is intended to change assignment between imported files and categories by editing or creating new categories.
- Button "Upload" starts process uploading of file list to selected device. By activating "Upload", progress dialog box is started. If the Storage folder does not exist in the device warning message is given so that the user can create a Storage folder. The progress dialog box contains button to cancel process in middle. When upload process is over the progress dialog is closed automatically.
- Button "Exit" finishes running the application and exists.





● Select Category feature

“Select category” feature provides the user the ability to edit, add new and assign POI categories.



- Button “New” is used to create new POI category. In the New Category dialog box, name and POI icon is a must to create a new POI category.
- Button “Delete” removes one or more selected categories. If category is assigned to -some POIs, delete process is denied. While categories are not selected in the list, “Delete” button is disabled.
- Button “Edit” enables the user to change field of selected category. If there is not selected category or more than one category is selected “Edit” button is disabled.
- Button “OK” assigns selected category to the selected main dialog files. If more than one category is selected or no category is selected “OK” button is disabled.
- Button “Cancel” discards new assignment between category and POI file and closes the dialog box. Also, canceling keeps changes in category list and inside categories.

