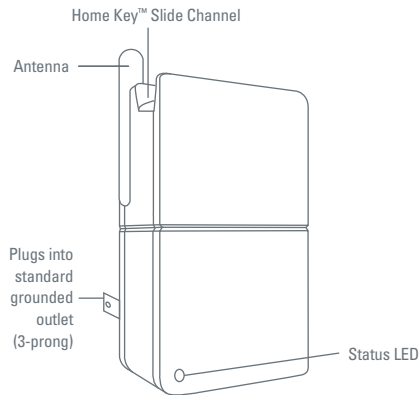


Range Extender Components



Range Extender Uses:

Expand the transmission zone to reach sensors that are farther away from the Base Station.*

Perfect for:

- Large houses
- Houses with thick walls and floors
- Houses with obstructions

**Actual range may vary, depending on the location of the Base Station and home construction.*

FCC Statement

(Compliance Statement, Part 15.19): This device complies with Part 15 of the FCC Rules. Operation is subject to the following two conditions: (1) this device may not cause harmful interference, and (2) this device must accept any interference received, including interference that may cause undesired operation.

WARNING (Part 15.21): Changes or modifications not expressly approved by the party responsible for compliance could void the user's authority to operate this equipment.

To comply with FCC's RF exposure limits for general population/uncontrolled exposure, the antenna(s) used for this transmitter must be installed to provide a separation distance of at least 20 cm from all persons and must not be co-located or operating in conjunction with any other antenna or transmitter.

Industry Canada Statement

The term "IC" before the certification/registration number only signifies that the Industry Canada technical specifications were met.

Interference

This equipment has been tested and found to comply with the limits for a Class B digital device, pursuant to Part 15 of the FCC rules. These limits are designed to provide reasonable protection against harmful interference in a residential installation. This equipment generates, uses, and can radiate radio frequency energy and, if not installed and used in accordance with the instructions, may cause harmful interference to radio communications. However, there is no guarantee that interference will not occur in a particular installation. If this equipment does cause harmful interference to radio or television reception, which can be determined by turning the equipment off and on, then the user is encouraged to try to correct the interference by one or more of the following measures:

- Reorient or relocate the receiving antenna
- Increase the separation between the equipment and the receiver
- Connect the equipment into a power source on different circuit than the receiver.

Sensor Maintenance

No serviceable parts. Clean with a soft, dry cloth.

IM00416008E Rev. 2
Part No.: 67A5006H02
© 2006 Eaton Corporation

EATON

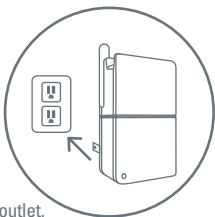
HOMEheartbeat™
Range Extender

EATON

Range Extender

1 Plug in

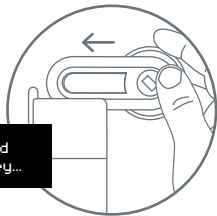
CARRY the Range Extender and the Home Key to the wall outlet where you want to place it. Choose an outlet that is not controlled with a wall switch.



PLUG the Range Extender into the wall outlet. The green light on the front will blink quickly several times.

2 Set up

After the light stops blinking, **CLICK** the thumbwheel to wake the Home Key if it is asleep, then **SLIDE** the Home Key into the channel on the top of the sensor. The Home Key screen should say:

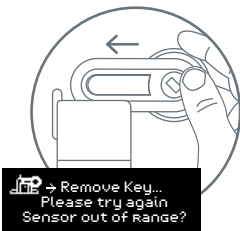


Please wait...
Device found
OK to remove Key.

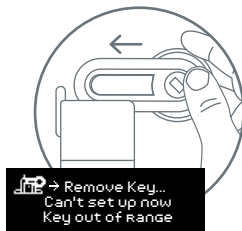
Device found
OK to remove Key...

Follow the instructions on the Home Key screen to join the Range Extender to your system, name it, and set **In-Home Awareness** and **"CallMe" Awareness**.

If you slide the Home Key into the sensor Slide Channel and the Home Key screen shows either of the following messages, it means that the Home Key or sensor may be outside the range of the Base Station.



Remove Key...
Please try again.
Sensor out of Range?



Remove Key...
Can't set up now.
Key out of Range

If the Home Key or sensor is out of range, you can:

- Add a Home Heartbeat Range Extender between the Base Station and Range Extender, or
- select an alternate location for the Range Extender, or
- try moving the Base Station to a more central location in your home. Then, complete Step 1 again.

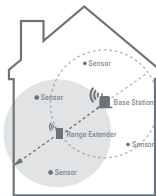
The Awareness settings let you choose to have Home Heartbeat alert you if the Range Extender has lost its connection with the system (**Off Mesh**), or has a poor, okay, or good connection.

Good Mesh is the strongest and indicates a high quality signal between the Base Station and the Range Extender. **Okay Mesh** and **Poor Mesh** indicate a connection of varying degree. **Off Mesh** is indicated when the Range Extender has lost the connection with the Base Station. If the Range Extender loses its **Good Mesh** frequently, try an alternate location or extra Range Extender to help maintain a good connection.

3 Use

After the Range Extender is joined to the system, the green light will be steady. If the light blinks slowly, it means that the unit has lost the connection to the Base Station and its status will change to **Off Mesh**.

The Range Extender will try to re-establish a connection with the Base Station, but if it is unable to, or if the Range Extender frequently loses its connection, try an alternate location and repeat Steps 1 and 2. When a device is communicating through the Range Extender, the green light on the front will blink rapidly.



Need help? Call **1-800-813-2199** for customer support or visit **www.homeheartbeat.com**

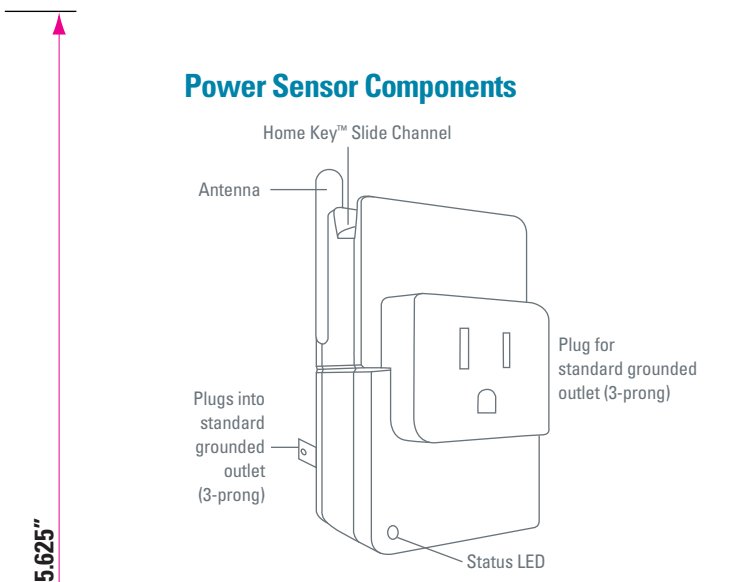
If Your Range Extender . . .

- will not respond, make sure the outlet it is plugged into actually has power.
- frequently goes to **Off Mesh**, move the Range Extender closer to the Base Station, or add an additional Home Heartbeat Range Extender.

EATON



FOLD
DOES NOT PRINT



Power Sensor Components

Power Sensor Uses:

- Home Computer
- Curling Iron
- Toaster Oven
- Gaming System
- Stereo
- Sump Pump
- Coffee Maker
- VCR
- Microwave
- Power Tools
- Outdoor Lighting
- Appliances

5.625"

FCC Statement

(Compliance Statement, Part 15.19): This device complies with Part 15 of the FCC Rules. Operation is subject to the following two conditions: (1) this device may not cause harmful interference, and (2) this device must accept any interference received, including interference that may cause undesired operation.

WARNING (Part 15.21): Changes or modifications not expressly approved by the party responsible for compliance could void the user's authority to operate this equipment.

To comply with FCC's RF exposure limits for general population/uncontrolled exposure, the antenna(s) used for this transmitter must be installed to provide a separation distance of at least 20 cm from all persons and must not be co-located or operating in conjunction with any other antenna or transmitter.

Industry Canada Statement

The term "IC" before the certification/registration number only signifies that the Industry Canada technical specifications were met.

Interference

This equipment has been tested and found to comply with the limits for a Class B digital device, pursuant to Part 15 of the FCC rules. These limits are designed to provide reasonable protection against harmful interference in a residential installation. This equipment generates, uses, and can radiate radio frequency energy and, if not installed and used in accordance with the instructions, may cause harmful interference to radio communications. However, there is no guarantee that interference will not occur in a particular installation. If this equipment does cause harmful interference to radio or television reception, which can be determined by turning the equipment off and on, then the user is encouraged to try to correct the interference by one or more of the following measures:

- Reorient or relocate the receiving antenna
- Increase the separation between the equipment and the receiver
- Connect the equipment into a power source on different circuit than the receiver.

IM00416007E Rev. 2
Part No.: 67A5007H01
© 2005 Eaton Corporation



HOMEheartbeat™
Power Sensor



BLEED = .125"

BLEED = .125"

DOES NOT PRINT
FOLD

PMS 314
MATCH CMYK



PMS 431
MATCH CMYK



FOLD
DOES NOT PRINT

11"
3.6875"

3.6875"

3.625"

5.625"

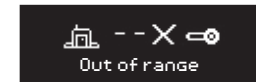
Power Sensor

1 Place

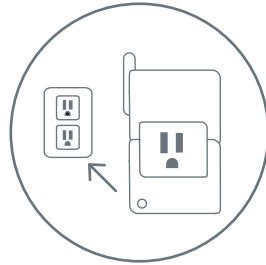
Take the Power Sensor and the Home Key to the wall outlet where you want to place it. With the Home Key, **DOUBLE-CLICK** at the Home Status icon and **CLICK Check Range?** to go to the built-in Range Finder.



The Range Finder will report the status. If you are out of range, move closer to the Base Station or add a Range Extender.

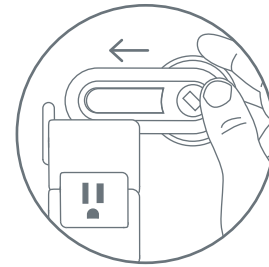


If you are in range, **CLICK Done, Go Back?** and plug in the Power Sensor nearby.



2 Plug in and set up

Plug the Power Sensor into the wall outlet. **CLICK** the Home Key thumbwheel to wake the screen, then **SLIDE** the Home Key into the channel on the top of the sensor.

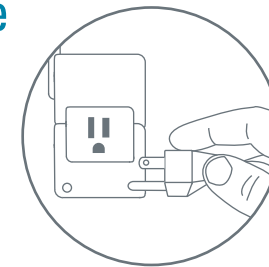


Follow the instructions on the Home Key screen to join the Power Sensor to your system, name it, choose sensitivity options, and set **In-Home Awareness** and **"CallMe" Awareness**.

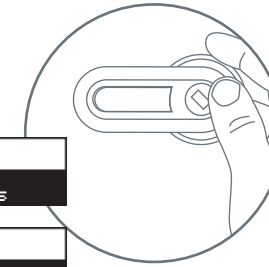
The sensitivity options allow you to adjust the system to correctly identify when appliances are on or off, because individual appliances draw different amounts of power.

3 Test and use

Plug an electrical device into the sensor. The Status LED will blink when the device is drawing power.



Turn the device plugged into the sensor on and off, checking the Home Key screen for feedback.



If you find that the Home Key does not show your appliance shifting between on and off, you will need to change the sensitivity setting. If the Home Key shows your device (such as a VCR) as "on" even when you turn it off, try choosing a less sensitive setting. If it shows the device as "off" when it is on, try a more sensitive setting.

BLEED = .125"



Need help? Call **1-800-813-2199** for customer support or visit www.homeheartbeat.com

If Your Power Sensor . . .

- will not respond, make sure the outlet it is plugged into actually has power.
- does not send a signal to the Base Station, move the sensor and Base Station closer together (or consider getting a Range Extender).

EATON

BLEED = .125"

DOES NOT PRINT
FOLD